

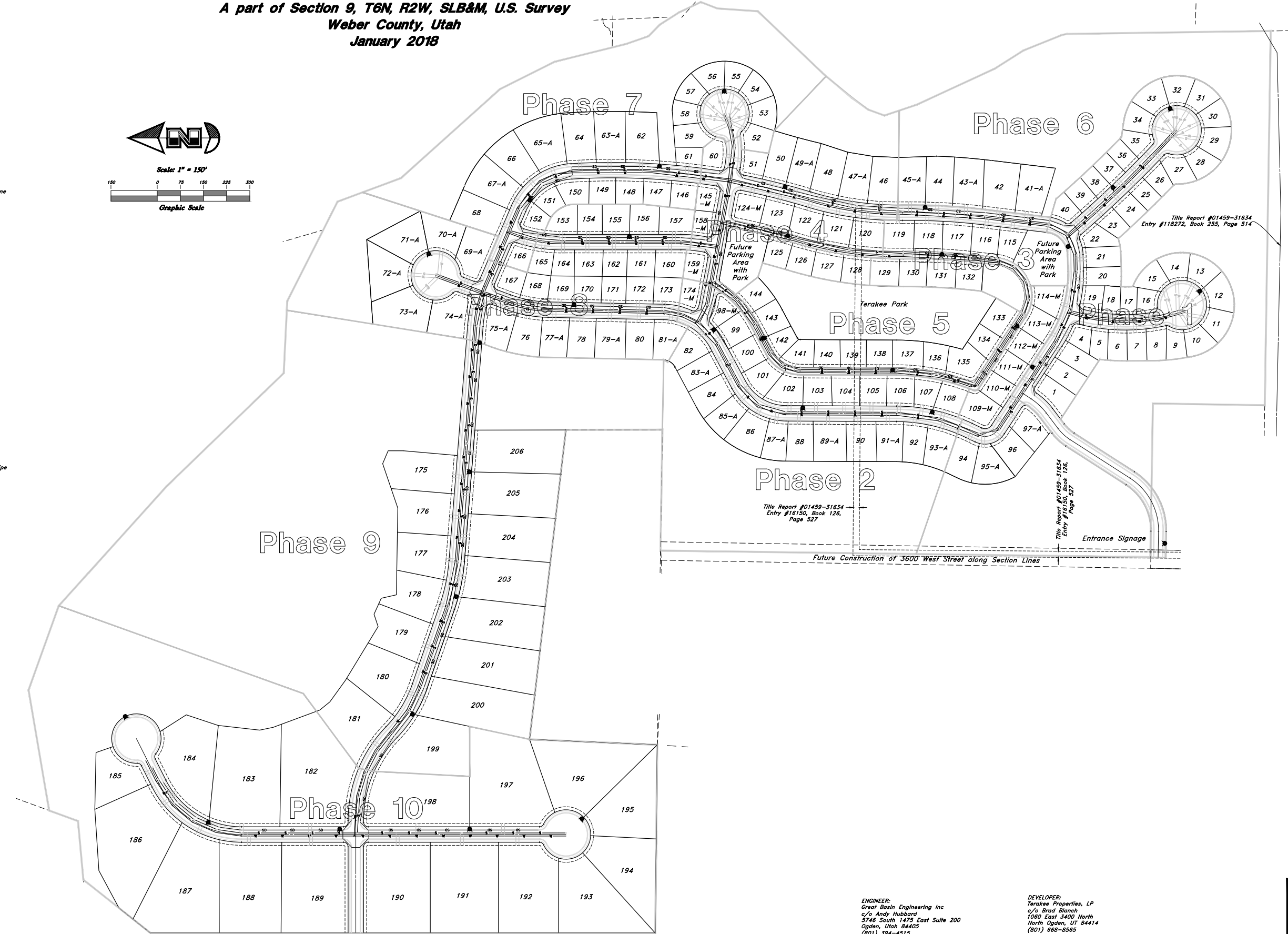
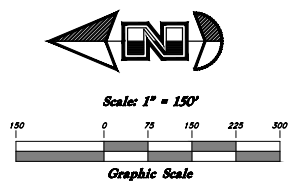


# Preliminary Plan for Terakee Farm PRUD Subdivision

A part of Section 9, T6N, R2W, SLB&M, U.S. Survey  
Weber County, Utah  
January 2018

## LEGEND

- C— Centerline
- UGT- Curled Telephone line
- OHT- Overhead Telephone line
- OHP- Overhead Power line
- UGP- Power line
- S- Sanitary Sewer line
- W- Cullinary Water line
- G- Gas line
- SD- Storm Drain line
- SW- Secondary Waterline
- LD- Land Drain line
- IW- Irrigation Waterline
- X-X- Fence
- Power Meter
- Post
- Water Meter
- Gas Meter
- Power Meter
- Telephone Box
- Sewer Manhole
- Drain Manhole
- Water Manhole
- Cleanout Box
- TA Top of Asphalt
- EA Edge of Asphalt
- NG Natural Ground
- LG Lip of Gutter
- SP Service Pole
- LP Light Pole
- PP Power Pole
- TP Telephone Pole
- FH Fire Hydrant
- DIT Flowline of Ditch
- TOE Toe of Slope
- TOP Top of Slope
- CO Cleanout
- FC Fence
- Flowline
- DMH Drain Manhole
- Spot Elevation
- Contour
- Asphalt
- Concrete
- Building
- Catch Basin
- C.M.P. Corrugated Metal Pipe
- R.C.P. Reinforced Concrete Pipe
- CONC Edge of Concrete
- RWALL Retaining Wall
- SMH Sewer Manhole
- WV Water Valve
- CB Catch Basin
- DV Diversion Box
- TC Top of Curb
- SW Sidewalk
- GAS Gas line Marker
- GUY Guy Wire
- BLOG Building Corner
- Fire Hydrant
- NG Natural Ground
- Water Valve
- Light Pole
- Power Pole w/guy
- Deciduous Tree
- Coniferous Tree
- ARP Area Reference Plat
- COL Building Columns
- LS Landscaping



**GREAT BASIN ENGINEERING**  
5746 SOUTH 1475 EAST OGDEN, UTAH 84403  
MAIN (801)394-4515 S.L.C (801)521-0222 FAX (801)392-7544  
WWW.GREATBASINENGINEERING.COM

# OVERALL UTILITY PLAN

ENGINEER:  
Great Basin Engineering Inc  
c/o Andy Hubbard  
5746 South 1475 East Suite 200  
Ogden, Utah 84405  
(801) 394-4515

DEVELOPER:  
Terakee Properties, LP  
c/o Brad Blanch  
1060 East 3400 North  
North Ogden, UT 84414  
(801) 668-8565

Sheet 2 of 6

WEBER COUNTY RECORDER

ENTRY NO. \_\_\_\_\_ FEE PAID \_\_\_\_\_

RECORDED \_\_\_\_\_ AT \_\_\_\_\_

IN BOOK \_\_\_\_\_ OF OFFICIAL RECORDS, PAGE \_\_\_\_\_ RECORDED FOR \_\_\_\_\_

WEBER COUNTY RECORDER

BY: \_\_\_\_\_ DEPUTY \_\_\_\_\_

# Preliminary Plan for Tarakee Farm® - No. 1

A PRUD Subdivision  
A part of Section 9, T6N, R2W, SLB&M, U.S. Survey  
Weber County, Utah  
January 2018

Northeast Corner of Section 9,  
T6N, R2W, SLB&M, U.S. Survey

(2640.03' W.C.S.)

Northeast Corner of Section 9,  
T6N, R2W, SLB&M, U.S. Survey

(2632.75' W.C.S.)

Southeast Corner of Section 9,  
T6N, R2W, SLB&M, U.S. Survey

(2644.81' W.C.S.)

(N 0°45'17" E W.C.S.)

(S 89°15'28" E W.C.S.)

(2641.11' W.C.S.)

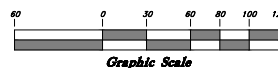
(N 0°51'29" E W.C.S.)

(S 89°26'19" E W.C.S.)

Center of Section 9,  
T6N, R2W, SLB&M, U.S. Survey



Scale: 1" = 60'



Terakee Farm®

Terakee Farm®

McFarland  
Subdivision

Agricultural Common Area

Jed J. & Pamela McCormick

(N/R) Non Radial to Right of Way Line  
(Rad) Radial to Right of Way Line

ENGINEER:  
Great Basin Engineering Inc  
c/o Andy Hubbard  
5746 South 1475 East Suite 200  
Ogden, Utah 84405  
(801) 394-4515

DEVELOPER:  
Tarakee Investments, LLC  
c/o Brad Blanch  
1080 East 3400 North  
North Ogden, UT 84414  
(801) 668-8565

Sheet 3 of 6

WEBER COUNTY RECORDER

ENTRY NO. \_\_\_\_\_ FEE PAID \_\_\_\_\_

FILED FOR RECORD AND  
RECORDED \_\_\_\_\_ AT \_\_\_\_\_

IN BOOK \_\_\_\_\_ OF OFFICIAL  
RECORDS, PAGE \_\_\_\_\_ RECORDED  
FOR \_\_\_\_\_

WEBER COUNTY RECORDER

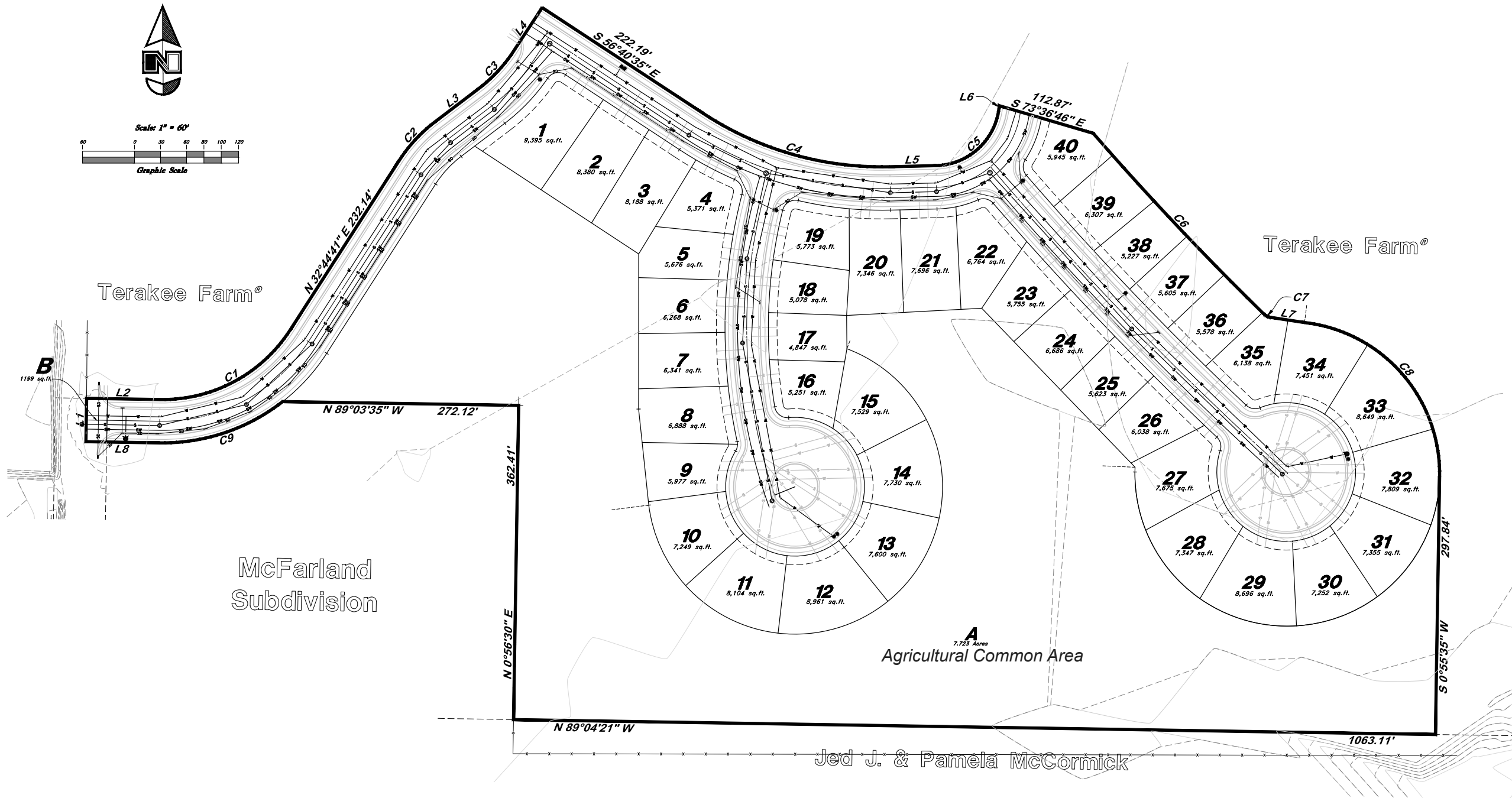
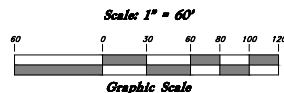
BY: \_\_\_\_\_ DEPUTY \_\_\_\_\_



# PHASE 1 LOT LAYOUT PLAN

Preliminary Plan for  
**Tarakee Farm® - No. 1**

A PRUD Subdivision  
 A part of Section 9, T6N, R2W, SLB&M, U.S. Survey  
 Weber County, Utah  
 January 2018



# Preliminary Plan for Terakee Farm PRUD Subdivision

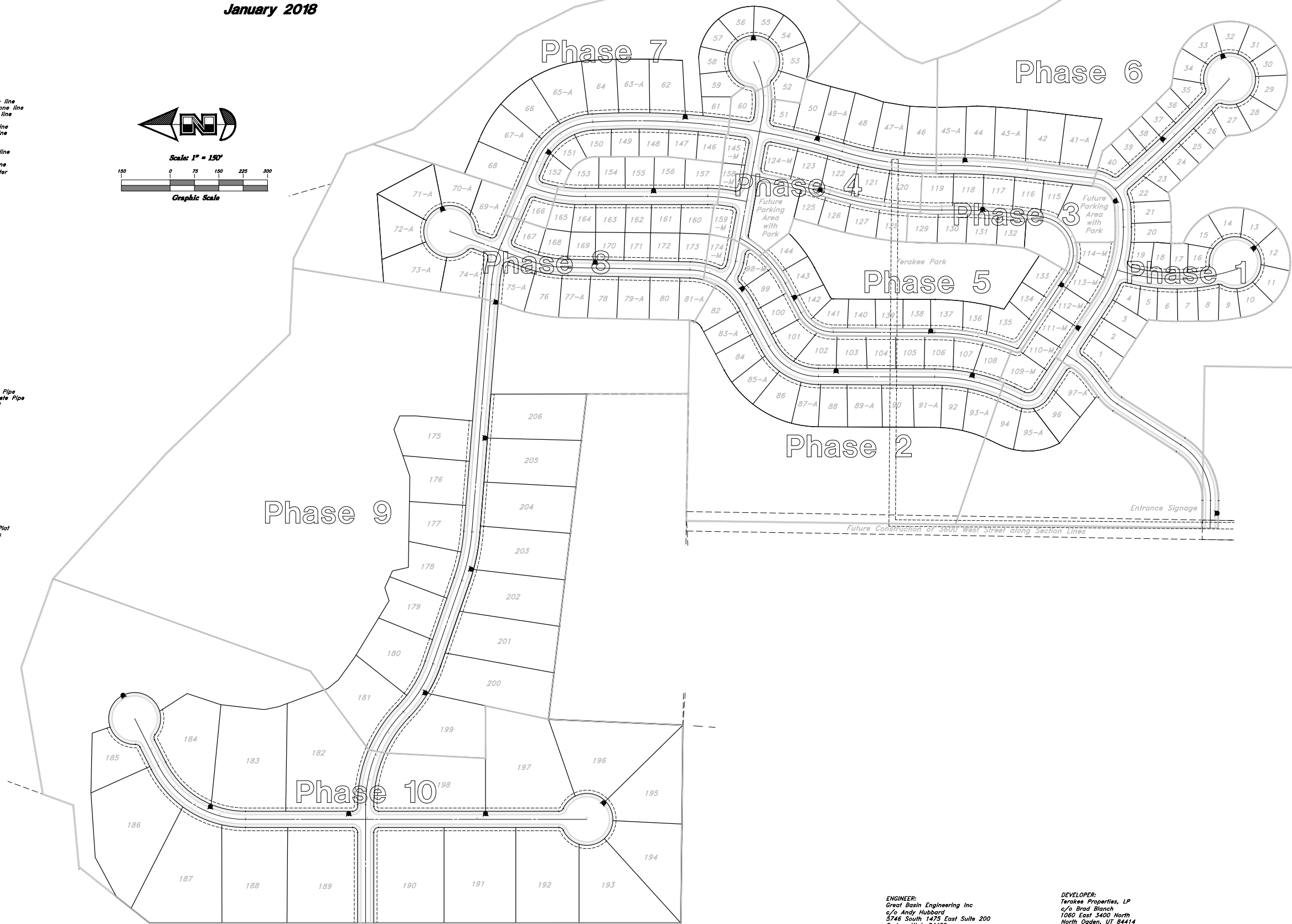
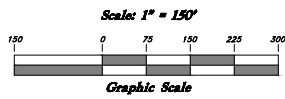
A part of Section 9, T6N, R2W, SLB&M, U.S. Survey

Weber County, Utah

January 2018

## LEGEND

- E— Centerline
- UGT- Buried Telephone line
- OHT- Overhead Telephone line
- OHP- Overhead Power line
- UGP- Power line
- SS- Sanitary Sewer line
- W- Culinary Water line
- SD- Storm Drain line
- SW- Secondary Waterline
- LD- Land Drain line
- IW- Irrigation Waterline
- X-X-X- Fence
- Power Meter
- Water Meter
- Gas Meter
- Post
- Telephone Box
- Sewer Manhole
- Drain Manhole
- Water Manhole
- Cleanout Box
- TA Top of Asphalt
- EA Edge of Asphalt
- NG Natural Ground
- LG Lip of Gutter
- SP Service Pole
- LP Light Pole
- PP Power Pole
- TP Telephone Pole
- FH Fire Hydrant
- DIT Flowline of Ditch
- TOE Toe of Slope
- TOP Top of Slope
- CO Cleanout
- FC Fence
- FW Flowline
- DMH Drain Manhole
- x99.00 Spot Elevation
- Contour
- Asphalt
- Concrete
- Building
- Catch Basin
- C.M.P. Corrugated Metal Pipe
- R.C.P. Reinforced Concrete Pipe
- CONC Edge of Concrete
- RWALL Retaining Wall
- SMH Sewer Manhole
- WV Water Valve
- CB Catch Basin
- DV Diversion Box
- TC Top of Curb
- SW Sidewalk
- GAS Gas line Marker
- GUY Guy Wire
- BLDG Building
- NG Fire Hydrant
- NG Natural Ground
- WV Water Valve
- LP Light Pole
- Power Pole w/guy
- Deciduous Tree
- Coniferous Tree
- ARP Area Reference Plat
- COL Building Columns
- LS Landscaping



# OVERALL FIRE HYDRANT LOCATIONS

ENGINEER:  
Great Basin Engineering Inc  
c/o Andy Hubbard  
5746 South 1475 East Suite 200  
Ogden, Utah 84405  
(801) 394-4515

DEVELOPER:  
Terakee Properties, LP  
c/o Brad Blanch  
1080 East 3400 North  
North Ogden, UT 84414  
(801) 868-8565

Sheet 5 of 6

WEBER COUNTY RECORDER

ENTRY NO. \_\_\_\_\_ FEE PAID \_\_\_\_\_

RECORDED \_\_\_\_\_ FILED FOR RECORD AND

\_\_\_\_\_ AT \_\_\_\_\_

\_\_\_\_\_ IN BOOK \_\_\_\_\_ OF OFFICIAL

RECORDS, PAGE \_\_\_\_\_ RECORDED

FOR \_\_\_\_\_

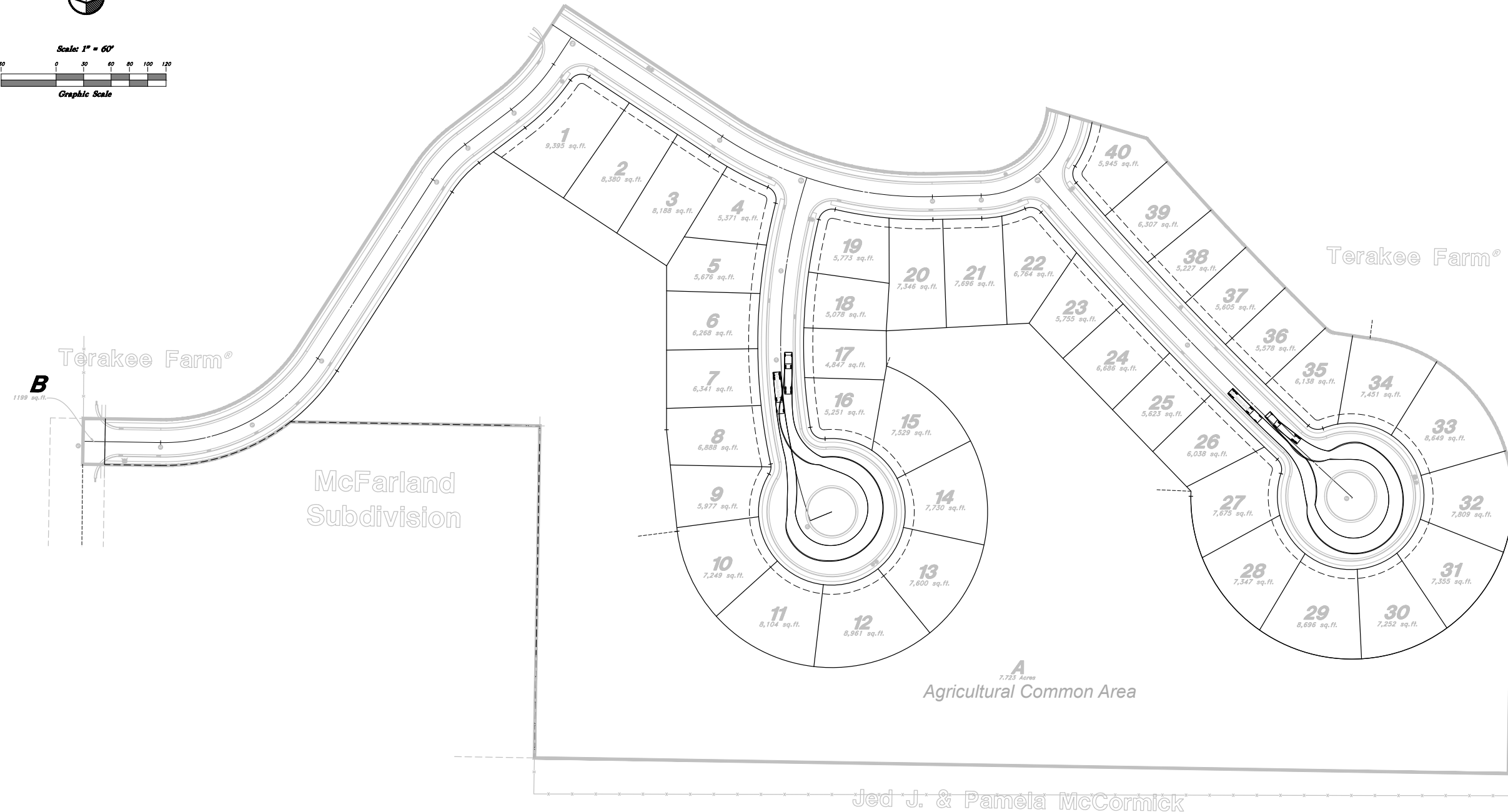
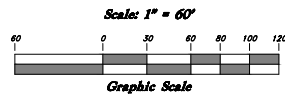
WEBER COUNTY RECORDER

BY: \_\_\_\_\_

DEPUTY

Preliminary Plan for  
**Tarakee Farm® - No. 1**

A PRUD Subdivision  
 A part of Section 9, T6N, R2W, SLB&M, U.S. Survey  
 Weber County, Utah  
 January 2018



Jed J. & Pamela McCormick

Sheet 6 of 6

WEBER COUNTY RECORDER

ENTRY NO. \_\_\_\_\_ FEE PAID \_\_\_\_\_

RECORDED \_\_\_\_\_ FILED FOR RECORD AND \_\_\_\_\_ AT \_\_\_\_\_

IN BOOK \_\_\_\_\_ OF OFFICIAL RECORDS, PAGE \_\_\_\_\_ RECORDED FOR \_\_\_\_\_

WEBER COUNTY RECORDER

BY: \_\_\_\_\_ DEPUTY \_\_\_\_\_