

Tarakee Farm® PRUD No. 1

A PRUD Subdivision

A part of Section 9, T6N, R2W, SLB&M, U.S. Survey

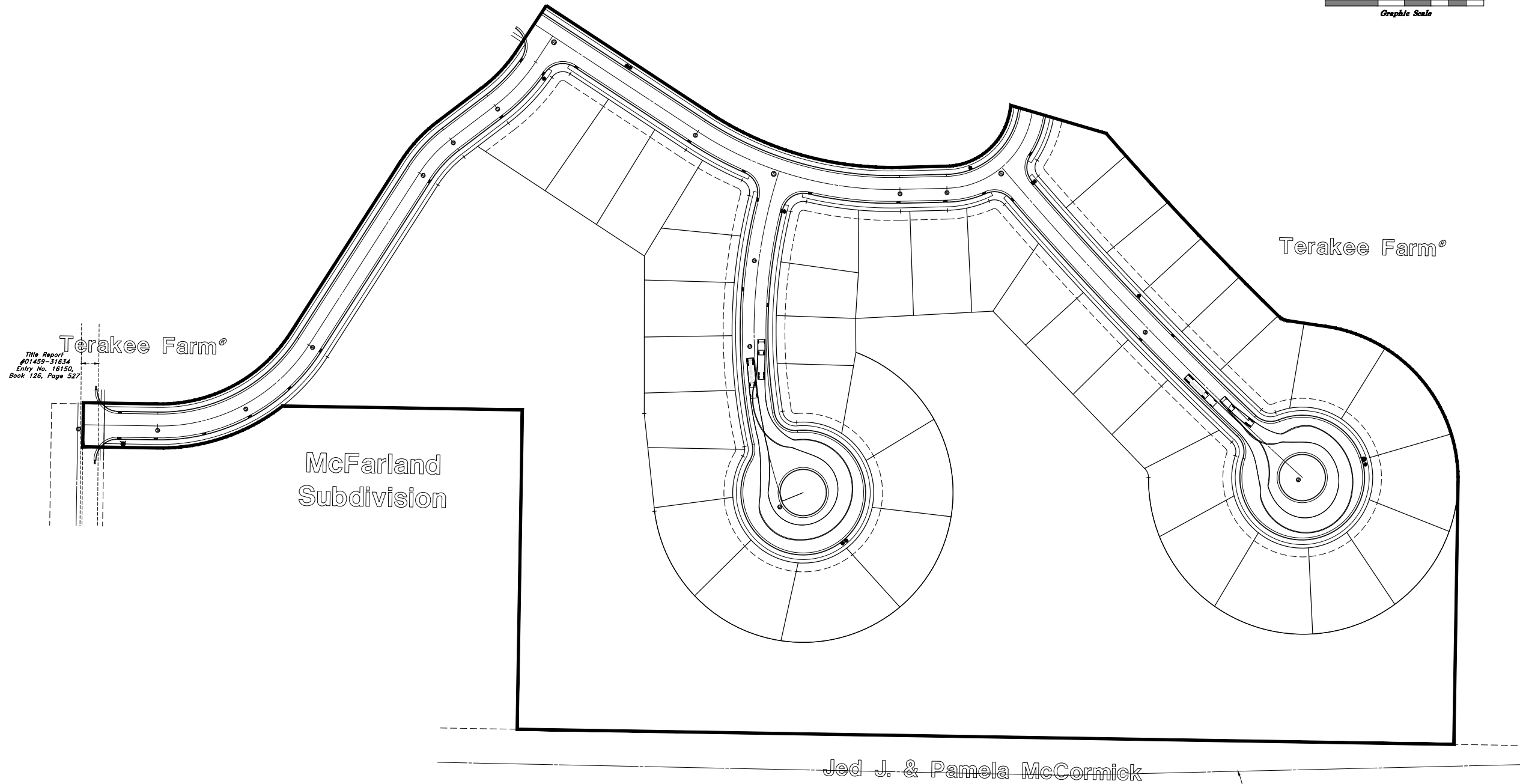
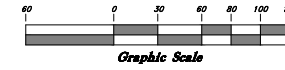
Weber County, Utah

January 2018

Auto-Turn Around Plan



Scale 1" = 60'



Title Report
#01459-31634
Entry No. 16150,
Book 126, Page 527

Title Report #01459-31634
Entry #118232 in
Book 255, Page 514

ENGINEER:
Great Basin Engineering, Inc.
c/o Andy Hubbard
5746 South 1475 East Suite 200
Ogden, Utah 84405
(801) 394-4515

DEVELOPER:
Terakee Investments, LLC
c/o Brad Blanch
1060 East 3400 North
North Ogden, UT 84414
(801) 668-8565

PRELIMINARY PLAN

REV	DATE	DESCRIPTION

GREAT BASIN ENGINEERING

5746 SOUTH 1475 EAST OGDEN, UTAH 84403
 MAIN (801) 394-4515 S.L.C. (801) 521-0222 FAX (801) 392-7544
 WWW.GREATBASINENGINEERING.COM

Auto Turn Around Plan

Terakee Farm - PRUD No. 1

Approximately 1000 North 3600 West
 Weber County, Utah
 A part of Section 9, T6N, R2W, SLB&M, U.S. Survey

5 Jan, 2018

SHEET NO.

4
of 4