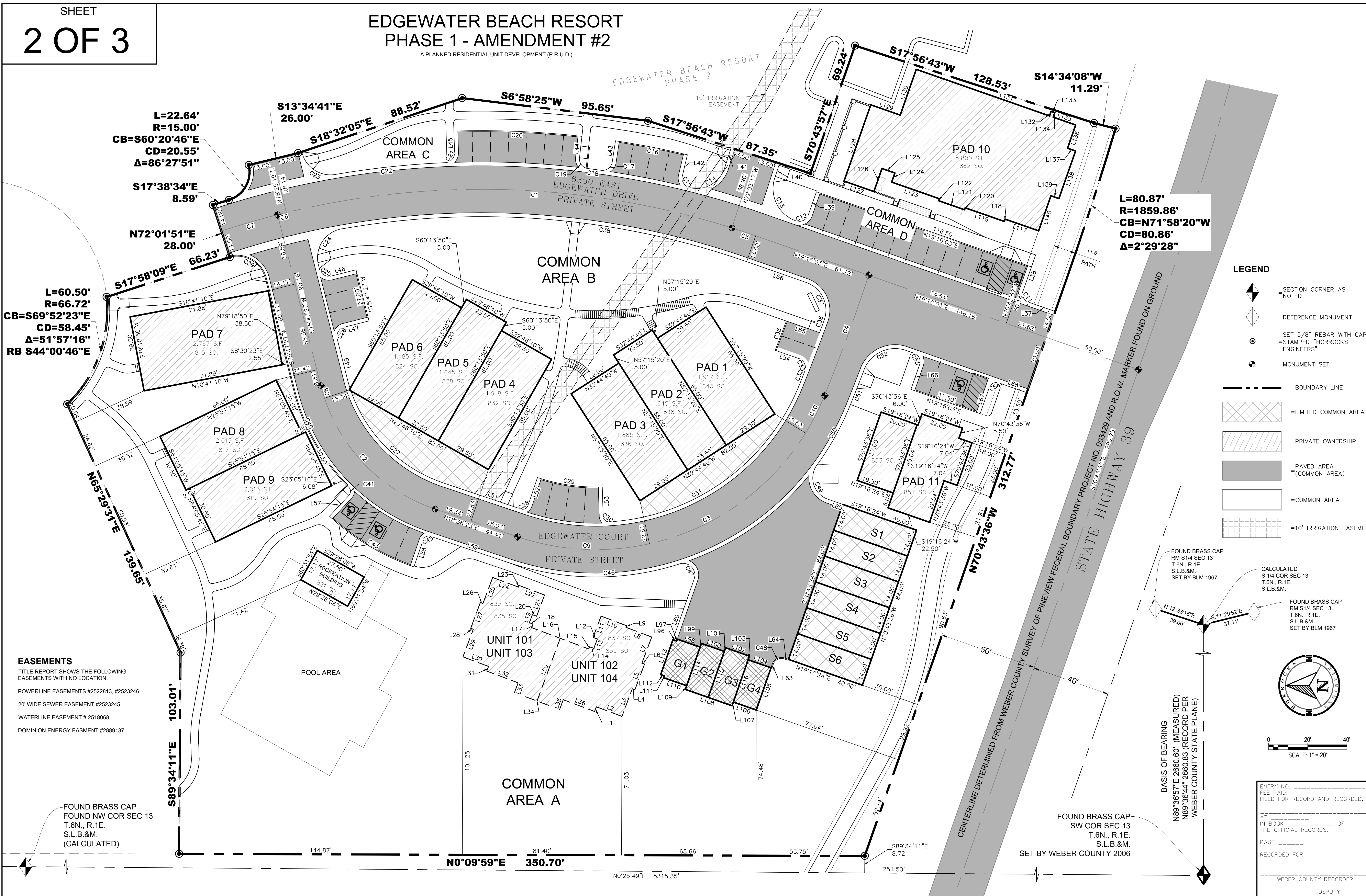


**EDGEWATER BEACH RESORT
PHASE 1 - AMENDMENT #2**

A PLANNED RESIDENTIAL UNIT DEVELOPMENT (P.R.U.D.)



L=22.64'
R=15.00'
CB=S60°20'46"E
CD=20.55'
Δ=86°27'51"

S17°38'34"E
8.59'

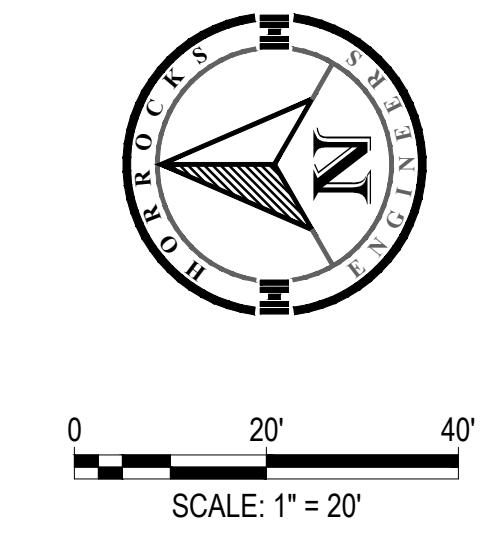
N72°01'51"E
28.00'

L=60.50'
R=66.72'
CB=S69°52'23"E
CD=58.45'
Δ=51°57'16"
RB S44°00'46"E

L=80.87'
R=1859.86'
CB=N71°58'20"W
CD=80.86'
Δ=2°29'28"

- LEGEND**
- SECTION CORNER AS NOTED
 - =REFERENCE MONUMENT
 - SET 5/8" REBAR WITH CAP =STAMPED "HORROCKS ENGINEERS"
 - MONUMENT SET
 - BOUNDARY LINE
 - =LIMITED COMMON AREA
 - =PRIVATE OWNERSHIP
 - PAVED AREA (COMMON AREA)
 - =COMMON AREA
 - =10' IRRIGATION EASEMENT

EASEMENTS
TITLE REPORT SHOWS THE FOLLOWING EASEMENTS WITH NO LOCATION.
POWERLINE EASEMENTS #2522813, #2523246
20' WIDE SEWER EASEMENT #2523245
WATERLINE EASEMENT # 2518068
DOMINION ENERGY EASMENT #2889137



ENTRY NO.: _____
FEE PAID: _____
FILED FOR RECORD AND RECORDED.
AT _____ OF _____
IN BOOK _____ OF THE OFFICIAL RECORDS,
PAGE _____
RECORDED FOR: _____
WEBER COUNTY RECORDER
DEPUTY

FOUND BRASS CAP
RM S1/4 SEC 13
T.6N., R.1E.
S.L.B.&M.
SET BY BLM 1967

CALCULATED
S1/4 COR SEC 13
T.6N., R.1E.
S.L.B.&M.

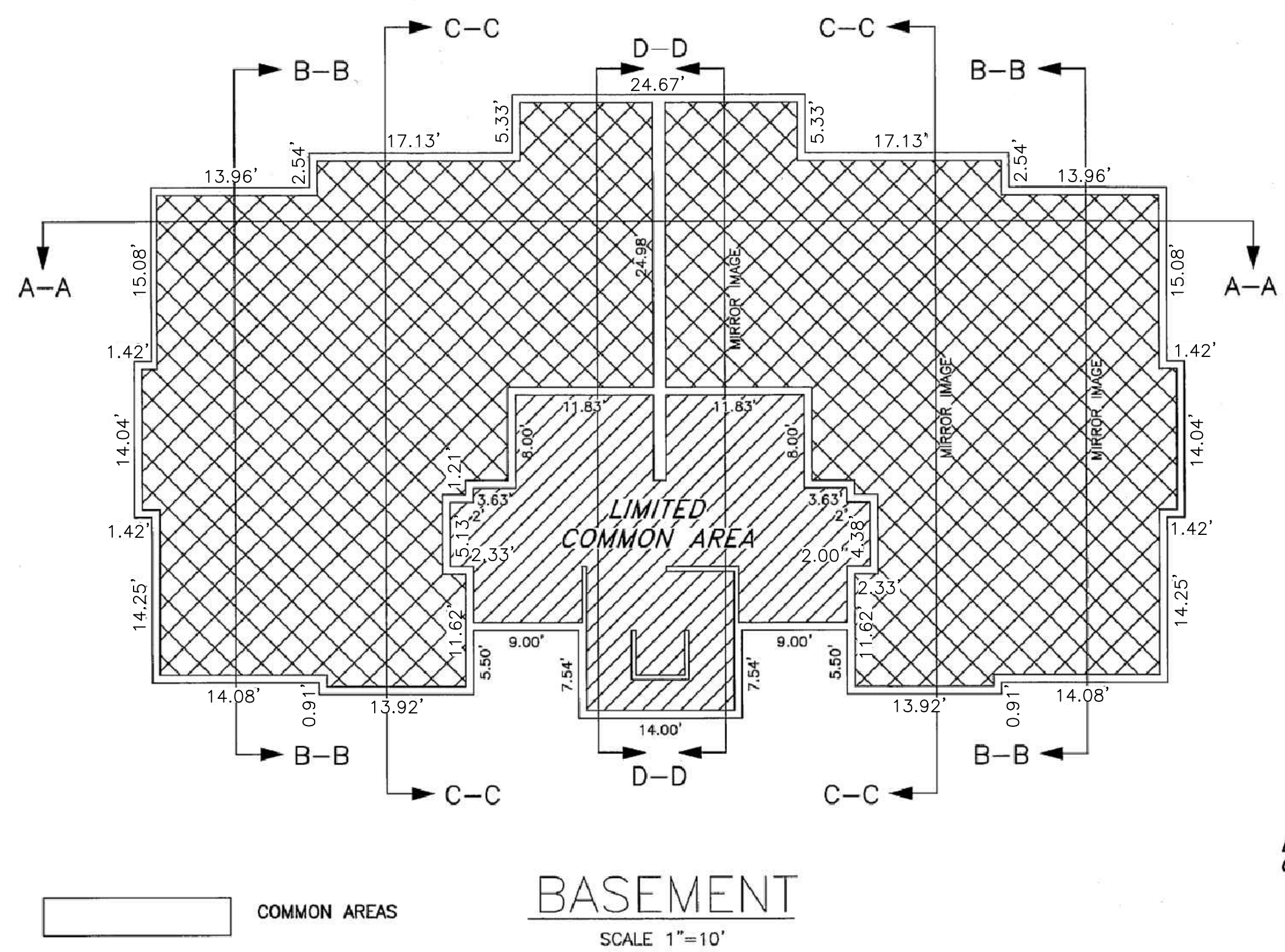
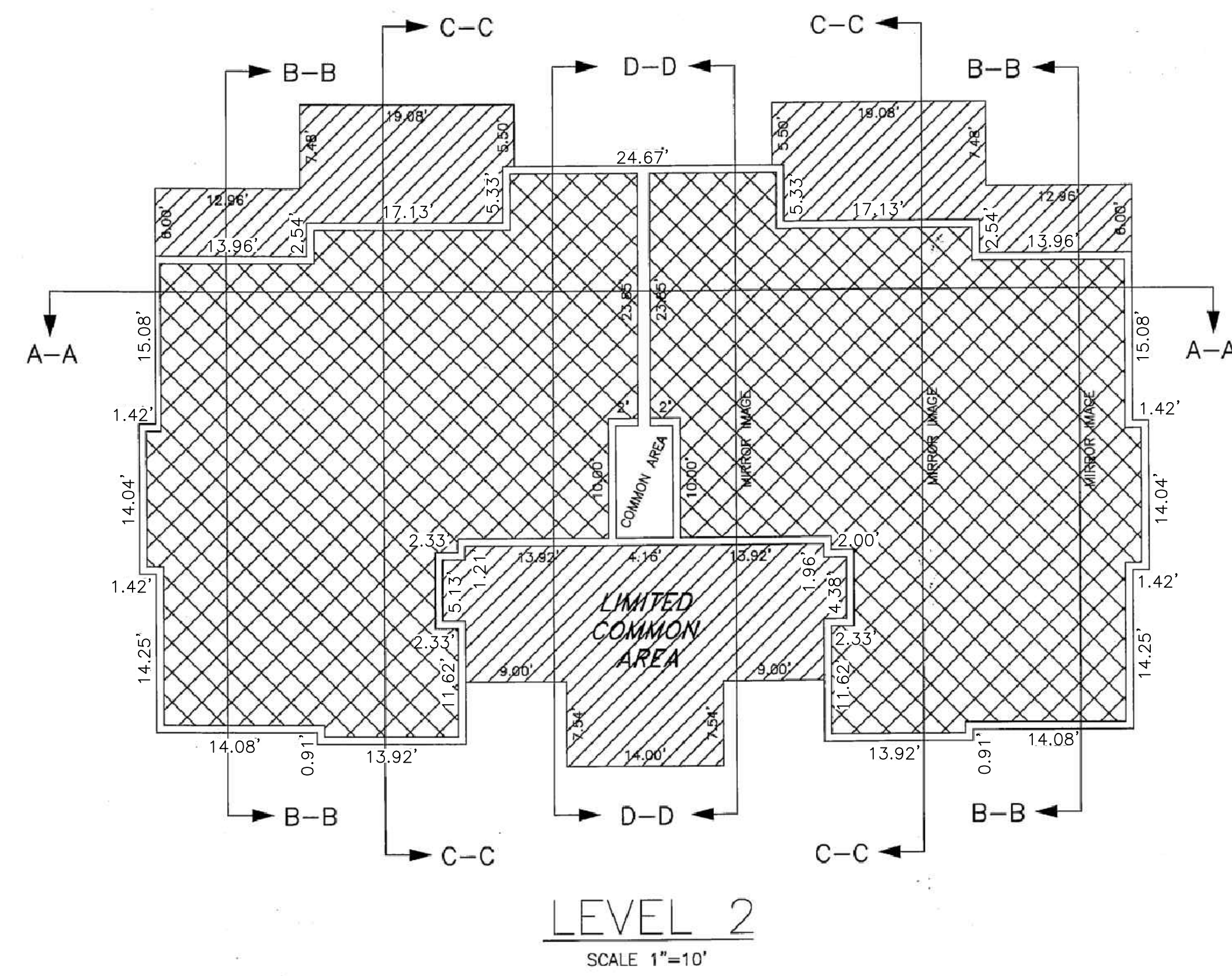
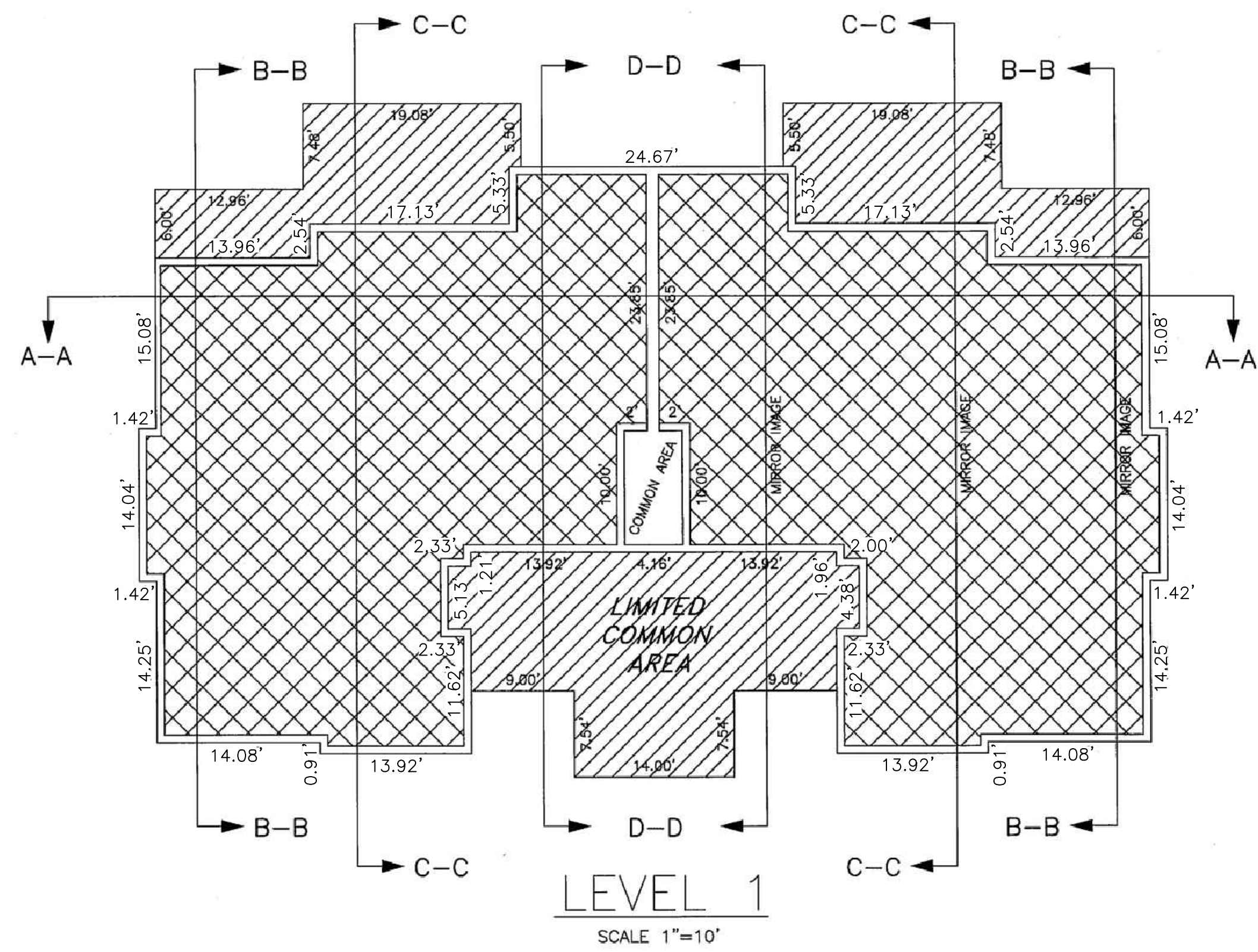
FOUND BRASS CAP
RM S1/4 SEC 13
T.6N., R.1E.
S.L.B.&M.
SET BY BLM 1967




FOUND BRASS CAP
SW COR SEC 13
T.6N., R.1E.
S.L.B.&M.
SET BY WEBER COUNTY 2006

BASIS OF BEARING
N89°36'57"E 2660.60' (MEASURED)
N89°36'44" 2660.83 (RECORD PER
WEBER COUNTY STATE PLANE)

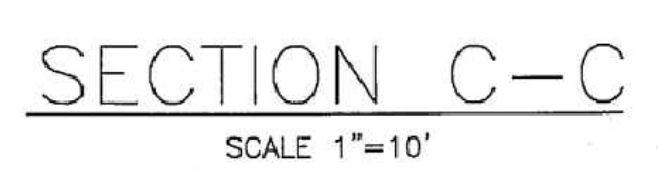
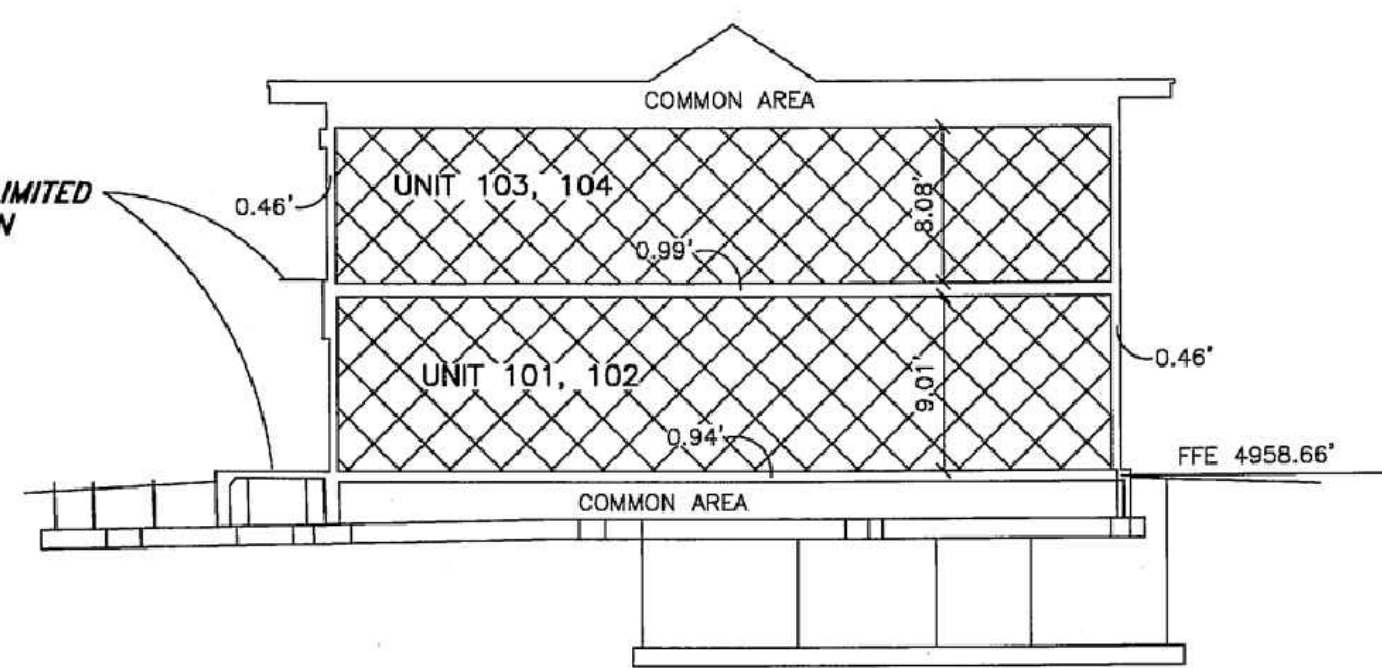
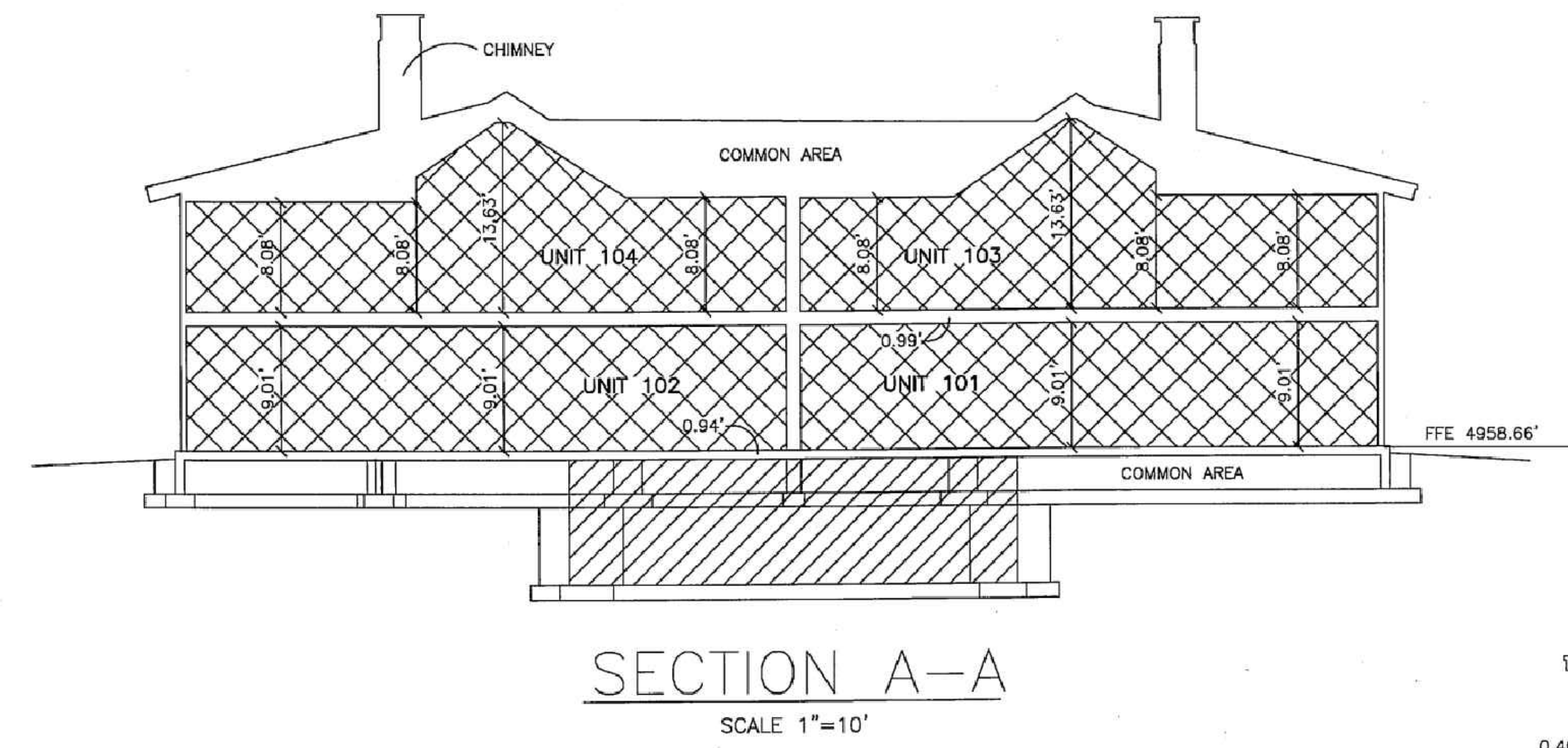
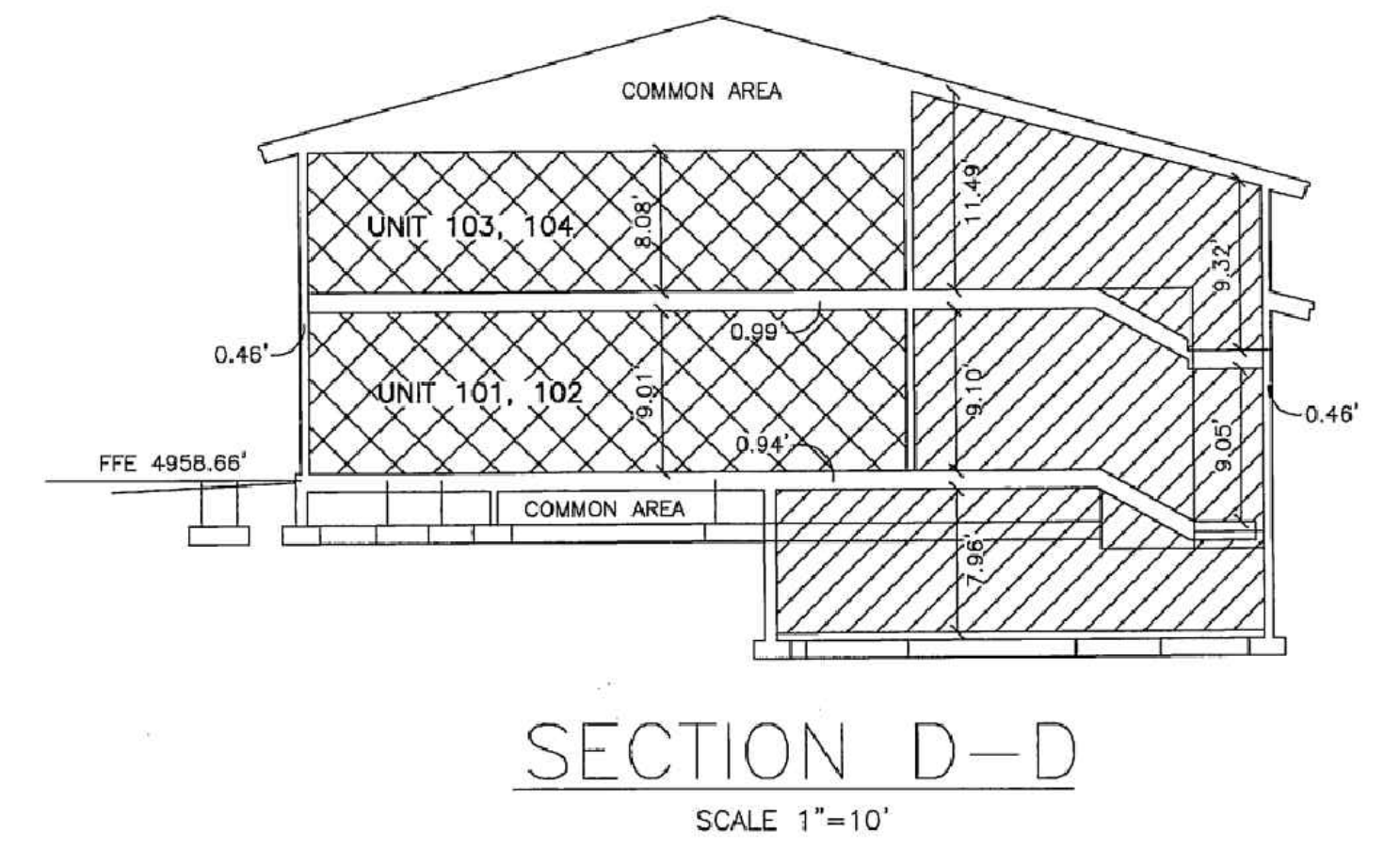
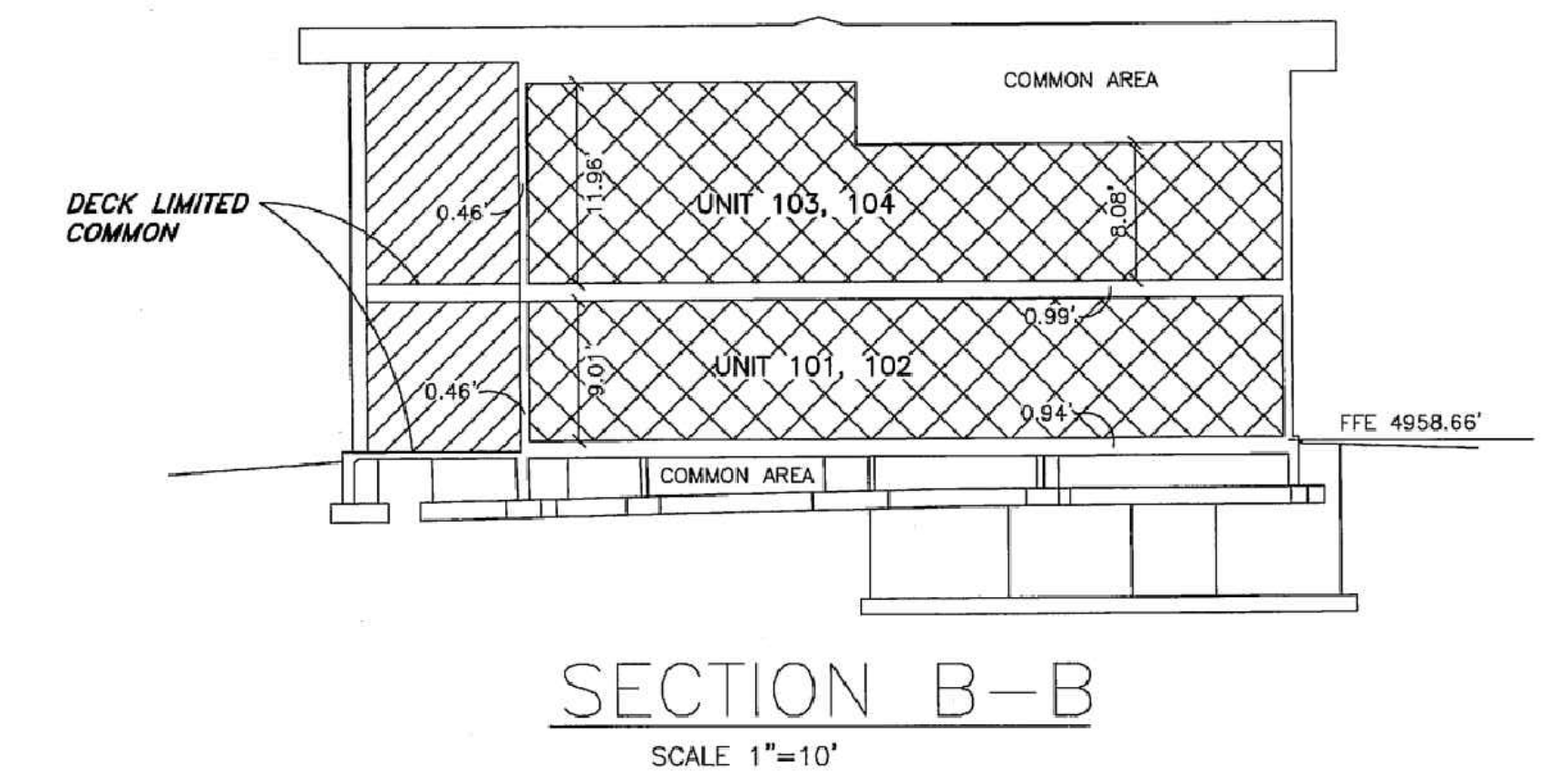
CENTERLINE DETERMINED FROM WEBER COUNTY SURVEY OF PINEVIEW FEDERAL BOUNDARY PROJECT NO. 003429 AND R.O.W. MARKER FOUND ON GROUND

STATE HIGHWAY 39



-  COMMON AREAS
-  LIMITED COMMON AREAS AND FACILITIES
-  PRIVATE OWNERSHIP

CONDOMINIUM NOTES:
UNITS 101-104 ARE CONDOMINIUM UNITS
ALL DRIVEWAYS, PATIOS, DECKS, BALCONIES ON UNITS 101-104 ARE CONSIDERED LIMITED COMMON AREA. THEY ARE SET ASIDE AND RESERVED FOR THE USE OF THE RESPECTIVE CONDOMINIUM UNIT TO WHICH THEY ARE ATTACHED OR APPURTENANT.
DIMENSIONS ON BUILDINGS VARY SLIGHTLY. AS-BUILT DIMENSIONS WILL CONTROL.



ENTRY NO: _____
FEE PAID: _____
FILED FOR RECORD AND RECORDED,
AT _____ OF
IN BOOK _____ OF
THE OFFICIAL RECORDS,
PAGE _____
RECORDED FOR:

WEBER COUNTY RECORDER

DEPUTY