



PLANT SCHEDULE

TREES	BOTANICAL NAME / COMMON NAME	CONT	QTY
	ABIES CONCOLOR / WHITE FIR	7-8' H	1
	ACER GINNALA 'FLAME' / FLAME AMUR MAPLE	2" CAL	6
	AMELANCHIER X GRANDIFLORA 'AUTUMN BRILLIANCE' / 'AUTUMN BRILLIANCE' SERVICEBERRY	1" CAL	8
	MALUS X 'SPRING SNOW' / SPRING SNOW CRAB APPLE	2" CAL	11
	PICEA PUNGENS 'FAT ALBERT' / COLORADO SPRUCE	7-8' H	4
	PICEA PUNGENS 'GLAUCA' / COLORADO BLUE SPRUCE	7-8' H	9
	PINUS NIGRA / AUSTRIAN BLACK PINE	7-8' H	5
	POPULUS TREMULOIDES / QUAKING ASPEN	2" CAL	22
	PRUNUS VIRGINIANA / CHOKECHERRY	2" CAL	4
	TILIA CORDATA / LITTLELEAF LINDEN	2" CAL	2
GROUND COVERS	BOTANICAL NAME / COMMON NAME	SIZE	QTY
	NATIVE GRASS MIX / GRASS SEED MIX	SEED	48,565 SF
	POA PRATENSIS / KENTUCKY BLUEGRASS	SOD	11,800 SF
	SEED MIX VARIETY / WILDFLOWER MIX	SEED	6,472 SF

SHRUB PALLETTE

SCIENTIFIC NAME	COMMON NAME	PLANTING SIZE
CARYOPTERIS CLANDONENSIS	BLUE MIST SPIRES	1-5 GAL.
CHRYSOTHAMNUS NAUSEOSUS	RABBIT BRUSH	1-5 GAL.
CORNUS SERCEA	REDTWIG DOGWOOD	1-5 GAL.
CARGANA ARBORESCENS	SIBERIAN PEA SHRUB	1-5 GAL.
FORSYTHIA X INTERMEDIA 'SPRING GLORY'	SPRING GLORY FORSYTHIA	1-5 GAL.
MAHONIA AQUIFOLIUM 'COMPACTUM'	COMPACT OREGON GRAPE HOLLY	1-5 GAL.
PEROVSKIA ATRIPLICIFOLIA	RUSSIAN SAGE	1-5 GAL.
PHILADELPHUS SPP.	MOCK ORANGE	1-5 GAL.
PHYSOCARPUS OPULUS	NINEBARK	1-5 GAL.
PINU MUGO 'PUMILIO'	DWARF MUGO PINE	1-5 GAL.
POTENTILLA FRUTICOSA	SHRUBBY CINQUEFOIL	1-5 GAL.
RHUS TRILOBATA	SUMAC	1-5 GAL.
RIBES ALPINUM	ALIPNE CURRANT	1-5 GAL.
ROSA WOODSII	WOOD'S ROSE	1-5 GAL.
SPIREA SPP.	SPIREA	1-5 GAL.
SYMPHORICARPAS	MOUNTAIN SNOWBERRY	1-5 GAL.
SYRINGA SPP.	COMMON LILAC	1-5 GAL.
VIBURNUM OPULUS NANUM	DWARF EUROPEAN CRANBERRY	1-5 GAL.

LANDSCAPE NOTES:

- THE CONTRACTOR MUST EXAMINE THE SITE CONDITIONS UNDER WHICH THE WORK IS TO BE PERFORMED AND NOTIFY THE OWNER'S AUTHORIZED REPRESENTATIVE IN WRITING OF ANY UNSATISFACTORY CONDITIONS. DO NOT PROCEED UNTIL CONDITIONS HAVE BEEN CORRECTED.
- BEFORE ANY EXCAVATION, NOTIFY BLUE STAKES AND COORDINATE WITH THE OWNER'S AUTHORIZED REPRESENTATIVE FOR THE LOCATION OF UTILITIES, SLEEVES, CONDUITS, ETC.
- THE CONTRACTOR MUST COORDINATE WITH ALL OTHER ASSOCIATED TRADES TO BEST FACILITATE PROGRESS ON THE JOB.
- TREAT EXISTING NOXIOUS WEEDS 10 DAYS BEFORE STARTING EARTHWORK OPERATIONS AND IF THEY APPEAR DURING CONSTRUCTION. USE PRE-EMERGENT, SELECTIVE, AND NON-SELECTIVE HERBICIDES AS APPROPRIATE. APPLY HERBICIDE AS DIRECTED ON THE MANUFACTURER'S LABEL.
- THE CONTRACTOR IS RESPONSIBLE FOR FINISH GRADE ELEVATIONS IN LANDSCAPED AREAS. ALLOW FOR 3" OF MULCH OVER BARRIER FABRIC IN ALL PLANTING AREAS CONTAINING PLANT MATERIAL AS NOTED FINISH GRADE OF MULCH TO BE 1" BELOW TOP OF CURB OR SIDEWALK. ANY STONE MULCH TO BE WASHED CLEAN AND FREE OF STICKS, CLAY OR FOREIGN MATERIALS. CONTRACTOR TO SUBMIT SAMPLE FOR APPROVAL.
- ALL BEDS SHALL HAVE A 3" LAYER OF SHREDDED BARK MULCH. REPLENISH ANNUALLY TO MAINTAIN MULCH DEPTH.
- INSTALL LANDSCAPE EDGING AS SHOWN ON THE PLANS AND ACCORDING PER THE MANUFACTURER'S INSTRUCTIONS.
- ALL PLANT MATERIALS MUST MEET SIZES INDICATED IN SCHEDULES. THE OWNER'S AUTHORIZED REPRESENTATIVE RESERVES THE RIGHT TO REFUSE PLANT MATERIALS WHICH DO NOT MEET THE QUALITY REQUIRED OF THE PROJECT. ALL EVERGREEN TREES SHALL BE TRUE TO FORM AND HAVE A SINGLE, STRAIGHT VERTICAL LEADER. PROVIDE HEALTHY, VIGOROUS PLANTS MEETING GOOD HORTICULTURAL STANDARDS AND MEETING STANDARDS THE AMERICAN ASSOCIATION OF NURSERYMAN STANDARDS AND ANSI 260.1 - STANDARD FOR NURSERY STOCK. ANY PLANT MATERIAL FOUND TO BE UNACCEPTABLE AT ANY INSPECTION SHALL BE IMMEDIATELY REMOVED AND REPLACED. CONTRACTOR MUST GUARANTEE ALL PLANT MATERIALS FOR ONE YEAR FOLLOWING SUBSTANTIAL COMPLETION.
- ANY PLANT QUANTITIES SHOWN ARE FOR THE CONVENIENCE OF THE CONTRACTOR ONLY. CONTRACTOR TO VERIFY ALL PLANT QUANTITIES REQUIRED AND PROVIDE THE PLANTS NECESSARY TO COMPLETE THE PLANTINGS. DO NOT MAKE SUBSTITUTIONS. IF SPECIFIED MATERIAL IS NOT OBTAINABLE, SUBMIT IN WRITING PROOF OF NON-AVAILABILITY AND A PROPOSAL FOR USE OF EQUIVALENT MATERIAL FOR EVALUATION TO BE ACCEPTED OR NOT ACCEPTED PRIOR TO THE BID.
- NO PLANT SHALL BE PUT INTO THE GROUND BEFORE ROUGH GRADING HAS BEEN FINISHED AND APPROVED BY THE OWNER'S AUTHORIZED REPRESENTATIVE. ALL PLANTS SHALL BE INSTALLED ACCORDING TO THE PLAN. ALL PLANTS SHALL BE AT LEAST 24" FROM BACK OF CURB OR SIDEWALK EXCEPT FOR 1 GALLON PLANTS THAT MAY BE INSTALLED AT LEAST 18" FROM BACK OF CURB OR SIDEWALK. ALL PLANTS SHALL BE WATERED THOROUGHLY TWICE DURING THE FIRST 24 HOUR PERIOD AFTER PLANTING. ALL PLANTS SHALL THEN BE WATERED ON A REGULAR SCHEDULE DURING THE FIRST GROWING SEASON.
- AN AUTOMATED IRRIGATION SYSTEM SHALL BE DESIGNED AND INSTALLED ACCORDING TO MANUFACTURE RECOMMENDATIONS AND LOCAL CODES BY OWNERS LICENSED LANDSCAPE CONTRACTOR
- COORDINATE WITH GRANITE SEED COMPANY TO ENSURE SAME SEED MIX IN ALL AREAS. 801-768-4422

HORROCKS ENGINEERS

2162 West Grove Pkwy., Suite 400
Pleasant Grove, UT 84062
(801) 763-5100
www.horrock.com

WARNING

IF THIS BAR DOES NOT MEASURE 2" THEN DRAWING IS NOT TO SCALE

REVISIONS

REV #	DATE	DESCRIPTION
1	NOV 30, 2017	

DRAWING INFO

DATE: NOV 30, 2017

DESIGNED: MJ

DRAWN: MJ

CHECKED: MJ

PROJECT: OG-707-1510

SEE 2ND SHEET FOR LISTING

PRELIMINARY

NOT FOR CONSTRUCTION

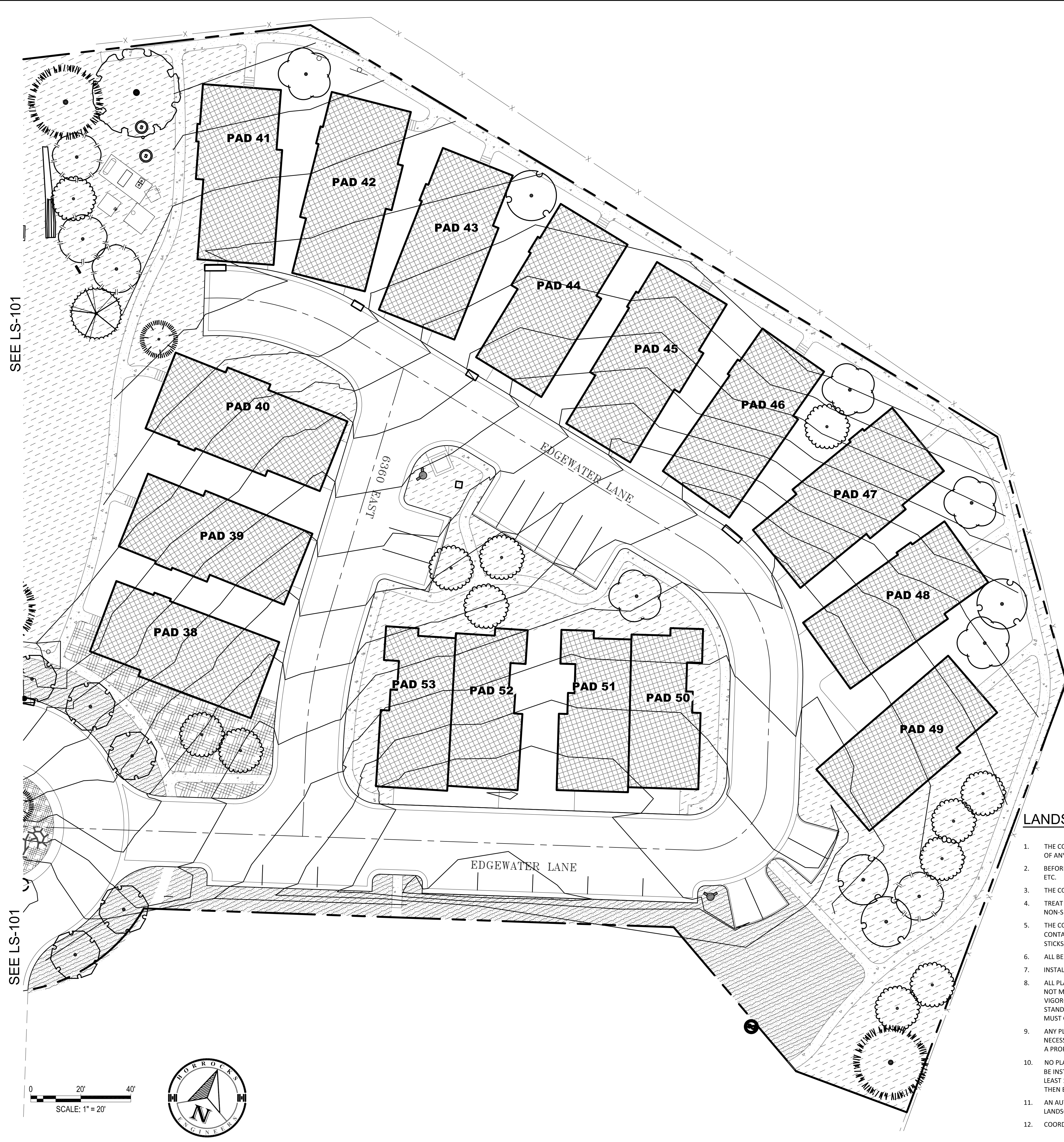
EDGEWATER PHASE 3

6350 STATE ROUTE 39
HUNTSVILLE, UT

LANDSCAPE PLAN

CLIENT:

LS-101



PLANT SCHEDULE

TREES	BOTANICAL NAME / COMMON NAME	CONT	QTY
	ABIES CONCOLOR / WHITE FIR	7-8' H	1
	ACER GINNALA 'FLAME' / FLAME AMUR MAPLE	2" CAL	6
	AMELANCHIER X GRANDIFLORA 'AUTUMN BRILLIANCE' / 'AUTUMN BRILLIANCE' SERVICEBERRY	1" CAL	8
	MALUS X 'SPRING SNOW' / SPRING SNOW CRAB APPLE	2" CAL	11
	PICEA PUNGENS 'FAT ALBERT' / COLORADO SPRUCE	7-8' H	4
	PICEA PUNGENS 'GLAUCA' / COLORADO BLUE SPRUCE	7-8' H	9
	PINUS NIGRA / AUSTRIAN BLACK PINE	7-8' H	5
	POPULUS TREMULOIDES / QUAKING ASPEN	2" CAL	22
	PRUNUS VIRGINIANA / CHOKECHERRY	2" CAL	4
	TILIA CORDATA / LITTLELEAF LINDEN	2" CAL	2

GROUND COVERS	BOTANICAL NAME / COMMON NAME	SIZE	QTY
	NATIVE GRASS MIX / GRASS SEED MIX	SEED	48,565 SF
	POA PRATENSIS / KENTUCKY BLUEGRASS	SOD	11,800 SF
	SEED MIX VARIETY / WILDFLOWER MIX	SEED	6,472 SF

SHRUB PALLETTE	SCIENTIFIC NAME	COMMON NAME	PLANTING SIZE
	CARYOPTERIS CLANDONENSIS	BLUE MIST SPIRES	1-5 GAL.
	CHRYSOTHAMNUS NAUSEOSUS	RABBIT BRUSH	1-5 GAL.
	CORNUS SERCEA	REDTWIG DOGWOOD	1-5 GAL.
	CARGANA ARBORESCENS	SIBERIAN PEA SHRUB	1-5 GAL.
	FORSYTHIA X INTERMEDIA 'SPRING GLORY'	SPRING GLORY FORSYTHIA	1-5 GAL.
	MAHONIA AQUIFOLIUM 'COMPACTUM'	COMPACT OREGON GRAPE HOLLY	1-5 GAL.
	PEROVSKIA ATRIPLICIFOLIA	RUSSIAN SAGE	1-5 GAL.
	PHILADELPHUS SPP.	MOCK ORANGE	1-5 GAL.
	PHYSOCARPUS OPULUS	NINEBARK	1-5 GAL.
	PINU MUGO 'PUMILIO'	DWARF MUGO PINE	1-5 GAL.
	POTENTILLA FRUTICOSA	SHRUBBY CINQUEFOIL	1-5 GAL.
	RHUS TRILOBATA	SUMAC	1-5 GAL.
	RIBES ALPINUM	ALIPNE CURRANT	1-5 GAL.
	ROSA WOODSII	WOOD'S ROSE	1-5 GAL.
	SPIREA SPP.	SPIREA	1-5 GAL.
	SYMPHORICARPAS	MOUNTAIN SNOWBERRY	1-5 GAL.
	SYRINGA SPP.	COMMON LILAC	1-5 GAL.
	VIBURNUM OPULUS NANUM	DWARF EUROPEAN CRANBERRY	1-5 GAL.

LANDSCAPE NOTES:

1. THE CONTRACTOR MUST EXAMINE THE SITE CONDITIONS UNDER WHICH THE WORK IS TO BE PERFORMED AND NOTIFY THE OWNER'S AUTHORIZED REPRESENTATIVE IN WRITING OF ANY UNSATISFACTORY CONDITIONS. DO NOT PROCEED UNTIL CONDITIONS HAVE BEEN CORRECTED.
2. BEFORE ANY EXCAVATION, NOTIFY BLUE STAKES AND COORDINATE WITH THE OWNER'S AUTHORIZED REPRESENTATIVE FOR THE LOCATION OF UTILITIES, SLEEVES, CONDUITS, ETC.
3. THE CONTRACTOR MUST COORDINATE WITH ALL OTHER ASSOCIATED TRADES TO BEST FACILITATE PROGRESS ON THE JOB.
4. TREAT EXISTING NOXIOUS WEEDS 10 DAYS BEFORE STARTING EARTHWORK OPERATIONS AND IF THEY APPEAR DURING CONSTRUCTION. USE PRE-EMERGENT, SELECTIVE, AND NON-SELECTIVE HERBICIDES AS APPROPRIATE. APPLY HERBICIDE AS DIRECTED ON THE MANUFACTURER'S LABEL.
5. THE CONTRACTOR IS RESPONSIBLE FOR FINISH GRADE ELEVATIONS IN LANDSCAPED AREAS. ALLOW FOR 3" OF MULCH OVER BARRIER FABRIC IN ALL PLANTING AREAS CONTAINING PLANT MATERIAL AS NOTED FINISH GRADE OF MULCH TO BE 1" BELOW TOP OF CURB OR SIDEWALK. ANY STONE MULCH TO BE WASHED CLEAN AND FREE OF STICKS, CLAY OR FOREIGN MATERIALS. CONTRACTOR TO SUBMIT SAMPLE FOR APPROVAL.
6. ALL BEDS SHALL HAVE A 3" LAYER OF SHREDDED BARK MULCH. REPLENISH ANNUALLY TO MAINTAIN MULCH DEPTH.
7. INSTALL LANDSCAPE EDGING AS SHOWN ON THE PLANS AND ACCORDING PER THE MANUFACTURER'S INSTRUCTIONS.
8. ALL PLANT MATERIALS MUST MEET SIZES INDICATED IN SCHEDULES. THE OWNER'S AUTHORIZED REPRESENTATIVE RESERVES THE RIGHT TO REFUSE PLANT MATERIALS WHICH DO NOT MEET THE QUALITY REQUIRED OF THE PROJECT. ALL EVERGREEN TREES SHALL BE TRUE TO FORM AND HAVE A SINGLE, STRAIGHT VERTICAL LEADER. PROVIDE HEALTHY, VIGOROUS PLANTS MEETING GOOD HORTICULTURAL STANDARDS AND MEETING STANDARDS THE AMERICAN ASSOCIATION OF NURSERYMAN STANDARDS AND ANSI 260.1 - STANDARD FOR NURSERY STOCK. ANY PLANT MATERIAL FOUND TO BE UNACCEPTABLE AT ANY INSPECTION SHALL BE IMMEDIATELY REMOVED AND REPLACED. CONTRACTOR MUST GUARANTEE ALL PLANT MATERIALS FOR ONE YEAR FOLLOWING SUBSTANTIAL COMPLETION.
9. ANY PLANT QUANTITIES SHOWN ARE FOR THE CONVENIENCE OF THE CONTRACTOR ONLY. CONTRACTOR TO VERIFY ALL PLANT QUANTITIES REQUIRED AND PROVIDE THE PLANTS NECESSARY TO COMPLETE THE PLANTINGS. DO NOT MAKE SUBSTITUTIONS. IF SPECIFIED MATERIAL IS NOT OBTAINABLE, SUBMIT IN WRITING PROOF OF NON-AVAILABILITY AND A PROPOSAL FOR USE OF EQUIVALENT MATERIAL FOR EVALUATION TO BE ACCEPTED OR NOT ACCEPTED PRIOR TO THE BID.
10. NO PLANT SHALL BE PUT INTO THE GROUND BEFORE ROUGH GRADING HAS BEEN FINISHED AND APPROVED BY THE OWNER'S AUTHORIZED REPRESENTATIVE. ALL PLANTS SHALL BE INSTALLED ACCORDING TO THE PLAN. ALL PLANTS SHALL BE AT LEAST 24" FROM BACK OF CURB OR SIDEWALK EXCEPT FOR 1 GALLON PLANTS THAT MAY BE INSTALLED AT LEAST 18" FROM BACK OF CURB OR SIDEWALK. ALL PLANTS SHALL BE WATERED THOROUGHLY TWICE DURING THE FIRST 24 HOUR PERIOD AFTER PLANTING. ALL PLANTS SHALL THEN BE WATERED ON A REGULAR SCHEDULE DURING THE FIRST GROWING SEASON.
11. AN AUTOMATED IRRIGATION SYSTEM SHALL BE DESIGNED AND INSTALLED ACCORDING TO MANUFACTURE RECOMMENDATIONS AND LOCAL CODES BY OWNERS LICENSED LANDSCAPE CONTRACTOR
12. COORDINATE WITH GRANITE SEED COMPANY TO ENSURE SAME SEED MIX IN ALL AREAS. 801-768-4422

HORROCKS ENGINEERS
 2162 West Grove Pkwy., Suite 400
 Pleasant Grove, UT 84062
 (801) 763-5100
 www.horrock.com

WARNING
 IF THIS BAR DOES NOT MEASURE 2" THEN DRAWING IS NOT TO SCALE

REVISIONS
 DATE: NOV 1, 2017
 DESIGNED: MJ
 DRAWN: MJ
 CHECKED: MJ
 PROJECT: OG-707-1510

PRELIMINARY
 NOT FOR CONSTRUCTION

EDGEWATER PHASE 3
 6350 STATE ROUTE 39
 HUNTSVILLE, UT

LANDSCAPE PLAN

CLIENT:

LS-102