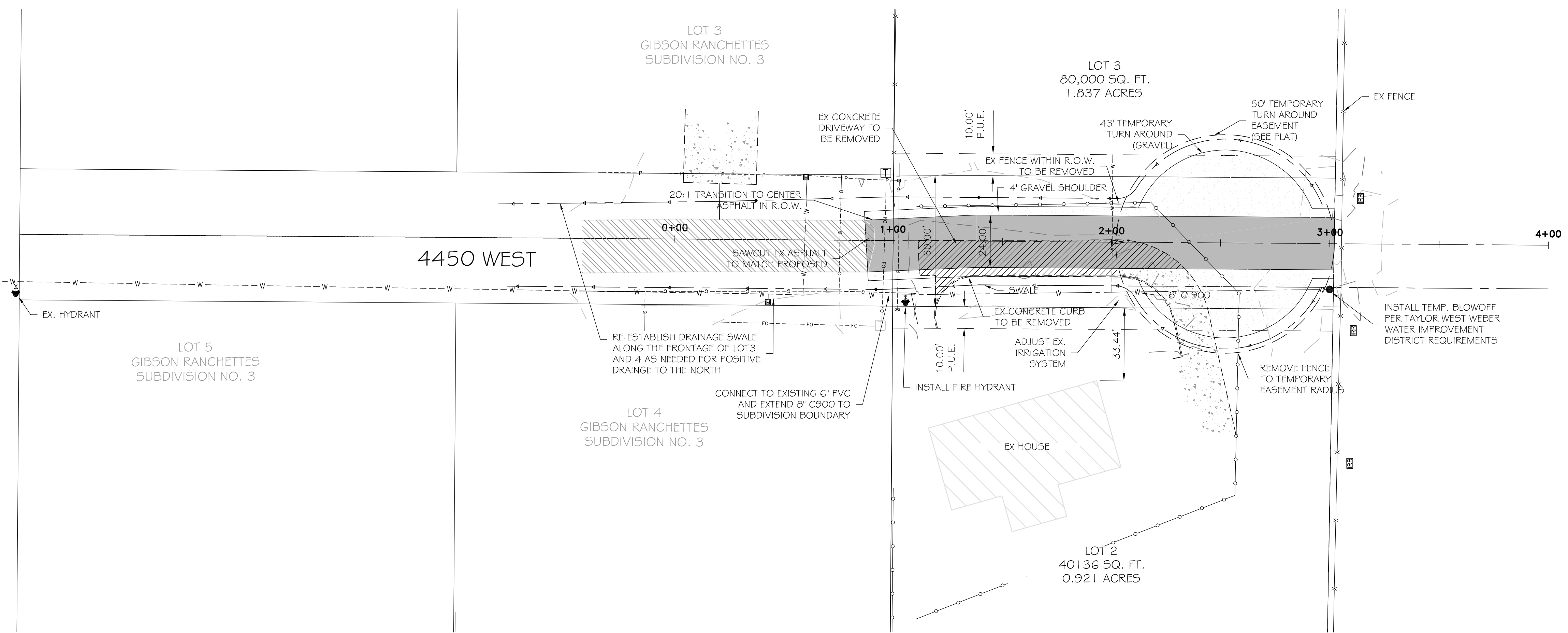
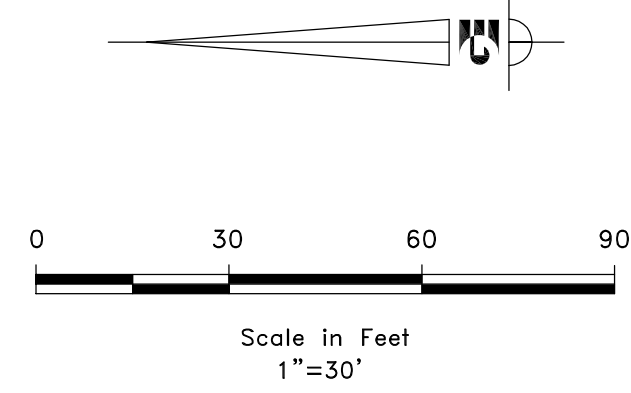




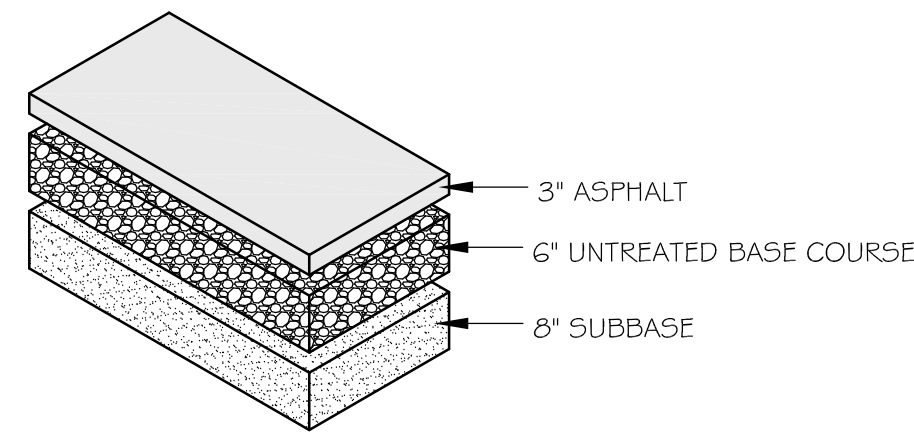
VICINITY MAP



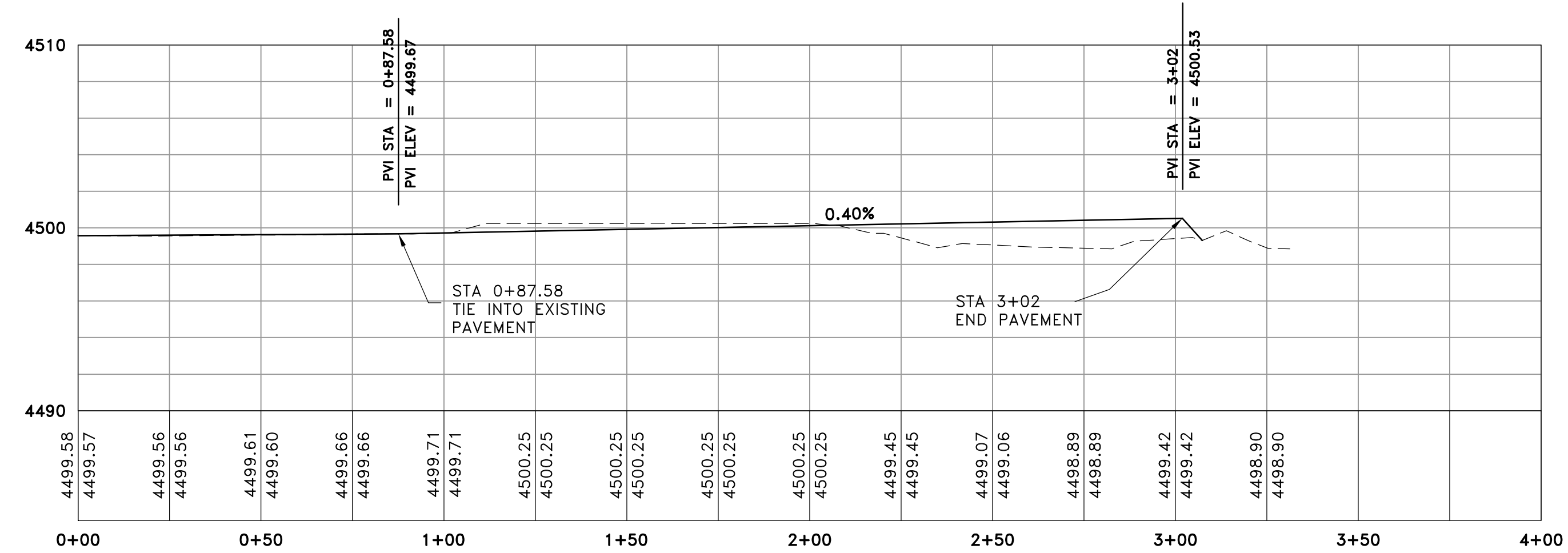
4450 WEST STREET PLAN VIEW

LEGEND

---	10' PUBLIC UTILITY EASEMENT
-FD-	EXISTING FIBER OPTICS
-P-	EXISTING POWER
-SS-	EXISTING SEWER
-W-	EXISTING CULINARY WATER
-IRR-	EXISTING IRRIGATION
-G-	EXISTING GAS
-X-X-	EXISTING IRON FENCE
-X-X-	EXISTING FENCE
///	EXISTING ASPHALT
///	EXISTING CONCRETE (TO BE REMOVED)
///	EXISTING CONCRETE (TO REMAIN)
■	PROPOSED ASPHALT



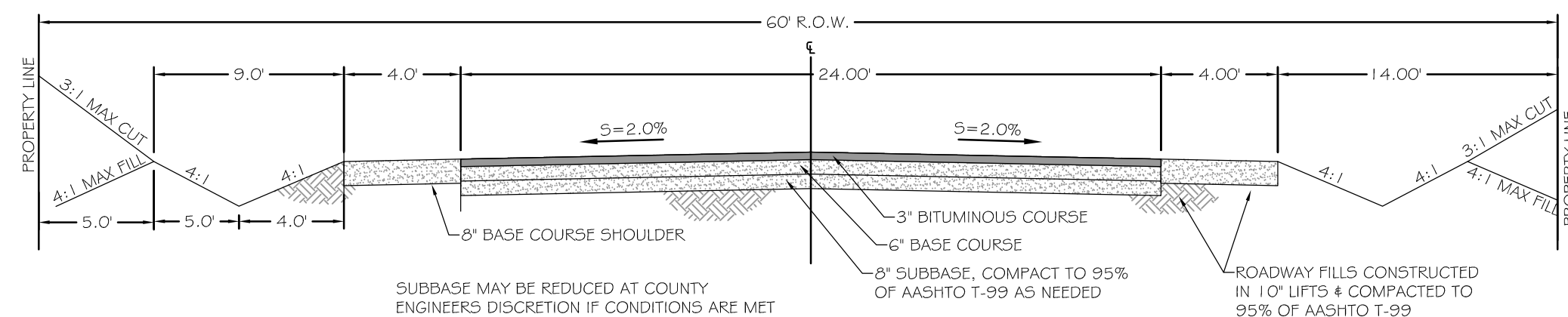
TYPICAL ASPHALT CROSS SECTION



4450 WEST STREET PROFILE

GENERAL NOTES:

- ALL CONSTRUCTION SHALL CONFORM TO WEBER COUNTY STANDARDS.
- LOCATION OF EXISTING UTILITIES ARE APPROXIMATE ONLY. THE CONTRACTOR SHALL VERIFY LOCATION & ELEVATION OF ALL UTILITIES.



TYPICAL RURAL ROAD SECTION

NOTE: ALL CONSTRUCTION TO CONFORM TO WEBER COUNTY STANDARDS AND SPECIFICATIONS.

DEVELOPERS

GIBSON FAMILY LLC
4503 WEST 400 SOUTH
OGDEN, UTAH 84404

NOTICE:
EXISTING UTILITIES ARE SHOWN ON PLANS FOR THE CONVENIENCE OF THE CONTRACTOR ONLY. THE CONTRACTOR IS RESPONSIBLE FOR THE PROTECTION OF ALL UTILITIES. THE ENGINEER BEARS NO RESPONSIBILITY FOR THE UTILITIES NOT SHOWN OR SHOWN INCORRECTLY.

1-800-662-4111
www.gardner-engineering.com

SCALE: 1" = 30'

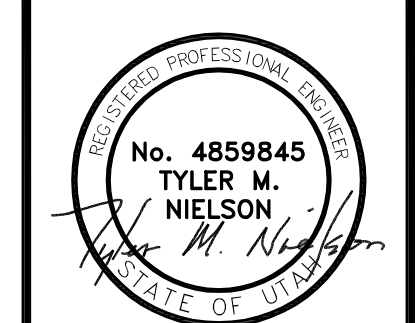
DATE: JUNE 2012

DESIGN: I.N.

DRAWN: I.N./S.C.

CHECKED:

REVISIONS	DESCRIPTION
DATE	



GIBSON FAMILY LLC
MARYANN ESTATES SUBDIVISION
4450 WEST STREET PLAN AND PROFILE
WEBER COUNTY, UTAH

Gardner Engineering

PLANNING
CIVIL ENGINEERING
LAND SURVEYING
AUTOMATED DESIGN

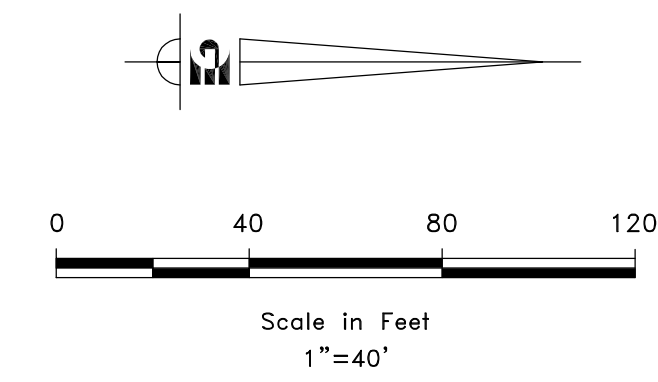
5875 South Adams Ave., Parkway, Suite 200 • Ogden, UT 84405 • Phone (801) 476-0202 • Fax (801) 476-0066

R:\2601 - Misc Survey\1211 - Hamcock & Associates\4450 West Road Extension\DESIGN\PRODUCTION\DWG\Roadway Design.dwg, 6/6/2012 9:17:28 AM, PDF395

STORM WATER POLLUTION PREVENTION PLAN

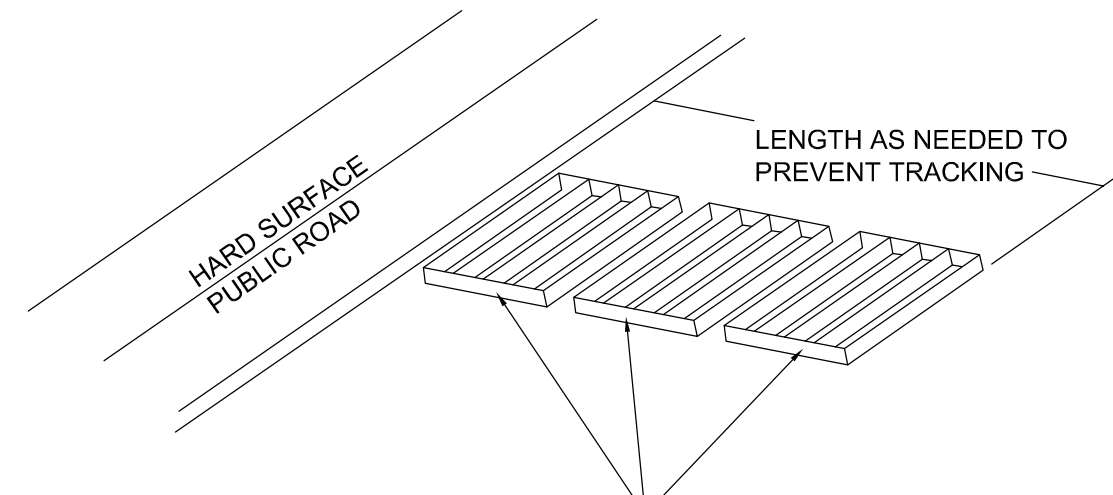
MARRYANN ESTATES SUBDIVISION

WEBER COUNTY, UTAH
JUNE 2012



EROSION CONTROL NOTES:

1. SANDBAGS WILL BE PLACED AT DISCHARGE LOCATIONS TO CONTAIN AND DIVERT STORM WATER THROUGH THE INLET PROTECTION.
2. AN EARTHEN BERM 6" HIGH WILL BE CONSTRUCTED TO CONTAIN THE STORM WATER AND DIVERT IT TO DISCHARGE AREAS.
3. STORM WATER WILL BE DISCHARGED INTO AN EXISTING DRAINAGE SYSTEM. EXISTING LINES SHALL BE INSPECTED PRIOR TO CERTIFICATE OF OCCUPANCY AND CLEANED IF NECESSARY.
4. THE STORM WATER PREVENTION PLAN SHALL CONFORM TO ALL STATE DIVISION OF ENVIRONMENTAL PROTECTION REGULATIONS.

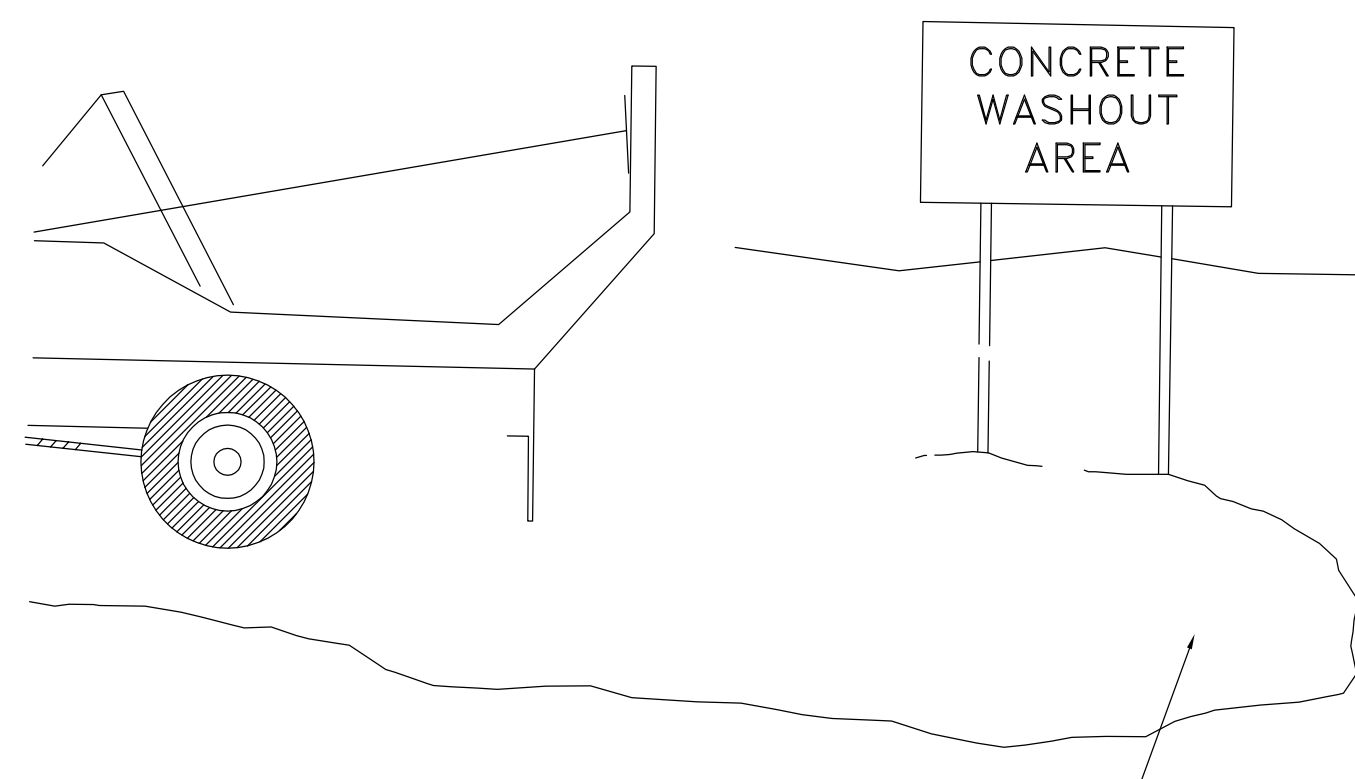


ENTRANCE STABILIZATION NOTES:

1. SEDIMENTS AND OTHER MATERIALS SHALL NOT BE TRACKED FROM THE SITE BY VEHICLE TRAFFIC. THE CONSTRUCTION ENTRANCE ROADWAYS SHALL BE STABILIZED SO AS TO PREVENT SEDIMENTS FROM BEING DEPOSITED INTO THE STORM DRAIN SYSTEMS. DEPOSITIONS MUST BE SWEEPED UP IMMEDIATELY AND MAY NOT BE WASHED DOWN BY RAIN OR OTHER MEANS INTO THE STORM DRAIN SYSTEM.
2. STABILIZED CONSTRUCTION ENTRANCE SHALL BE:
 - a. LOCATED AT ANY POINT WHERE TRAFFIC WILL BE ENTERING OR LEAVING A CONSTRUCTION SITE TO OR FROM A PUBLIC RIGHT-OF-WAY, STREET, ALLEY AND SIDEWALK OR PARKING AREA.
 - b. A SERIES OF STEEL PLATES WITH "RUMBLE STRIPS", AND/OR MIN. 3" COARSE AGGREGATE WITH LENGTH, WIDTH AND THICKNESS AS NEEDED TO ADEQUATELY PREVENT ANY TRACKING ONTO PAVED SURFACES.
3. ADDING A WASH RACK WITH A SEDIMENT TRAP LARGE ENOUGH TO COLLECT ALL WASH WATER CAN GREATLY IMPROVE EFFICIENCY.
4. ALL VEHICLES ACCESSING THE CONSTRUCTION SITE SHALL UTILIZE THE STABILIZED CONSTRUCTION ENTRANCE SITES.

STREET MAINTENANCE:

1. REMOVE ALL SEDIMENT DEPOSITED ON PAVED ROADWAYS IMMEDIATELY.
2. SWEEP PAVED AREAS THAT RECEIVE CONSTRUCTION TRAFFIC WHENEVER SEDIMENT BECOMES VISIBLE.
3. PAVEMENT WASHING WITH WATER IS PROHIBITED IF IT RESULTS IN A DISCHARGE TO THE STORM DRAIN SYSTEM.



NOTES:

1. AN AREA CONTAINED BY A BERM OF WHICH SHALL BE NO LESS THAN 6" IN HEIGHT SHALL SERVE AS THE "CONCRETE WASHOUT AREA" AS SPECIFIED ON THESE PLANS. EXCESS AND WASTE CONCRETE SHALL NOT BE WASHED INTO THE STREET OR INTO A DRAINAGE SYSTEM.
2. FOR WASHOUT OF CONCRETE AND MORTAR PRODUCTS, A DESIGNATED CONTAINMENT FACILITY OF SUFFICIENT CAPACITY TO RETAIN LIQUID AND SOLID WASTE SHALL BE PROVIDED ON SITE.
3. SLURRY FROM CONCRETE AND ASPHALT SAW CUTTING SHALL BE VACUUMED OR CONTAINED, DRIED, PICKED UP AND DISPOSED OF PROPERLY.

LEGEND

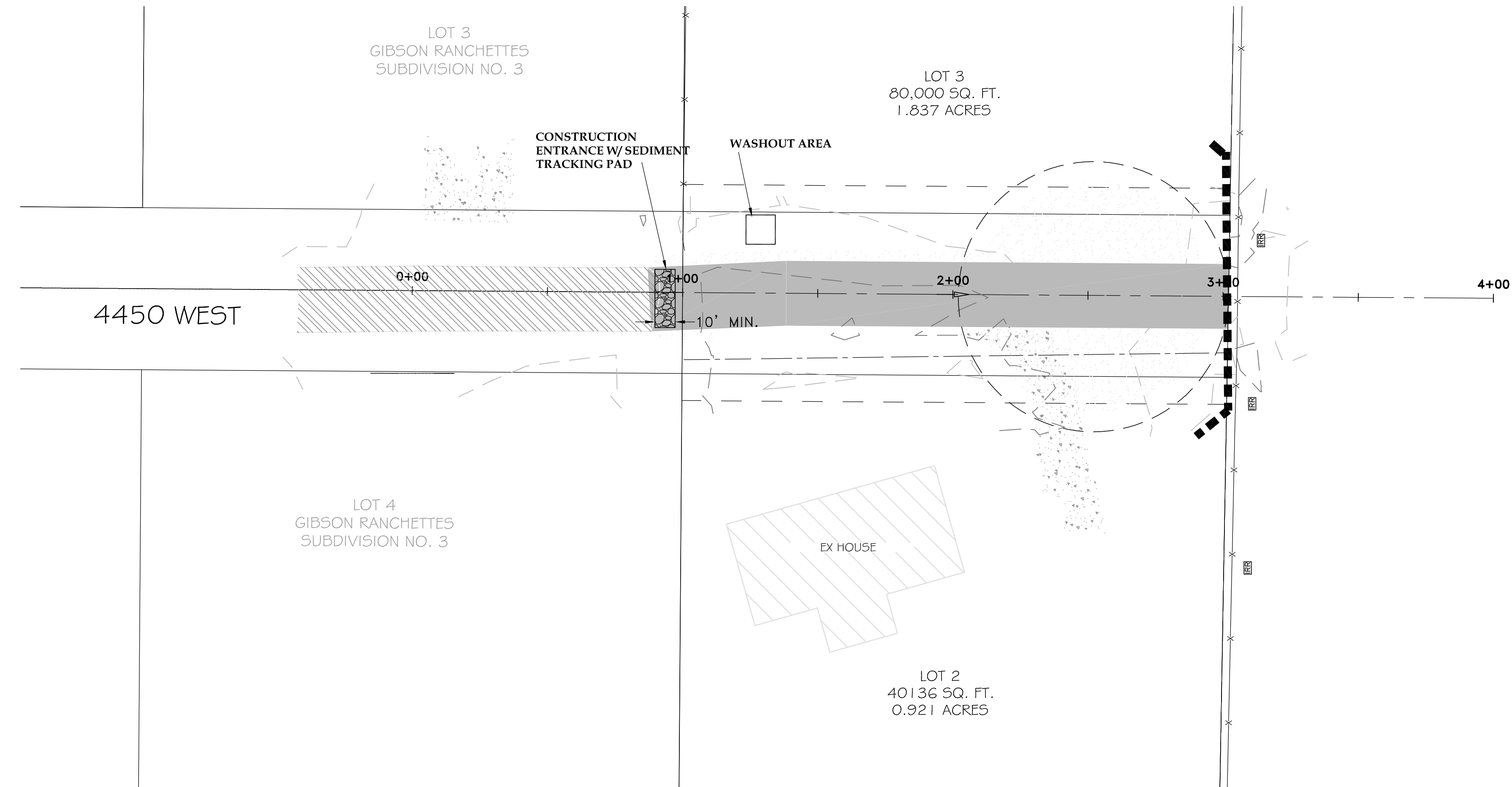
- INLET PROTECTION (FILTER BAG AND FABRIC UNDER GRATE)
- SILT FENCE

CERTIFICATION

I CERTIFY UNDER PENALTY OF LAW THAT THIS DOCUMENT AND ALL ATTACHMENTS WERE PREPARED UNDER MY DIRECTION OF SUPERVISION IN ACCORDANCE WITH A SYSTEM DESIGNED TO ASSURE THAT QUALIFIED PERSONNEL PROPERLY GATHERED AND EVALUATED THE INFORMATION SUBMITTED, BASED ON MY INQUIRY OF THE PERSON OR PERSONS WHO MANAGE THE SYSTEM, OR THOSE PERSONS DIRECTLY RESPONSIBLE FOR GATHERING THE INFORMATION. THE INFORMATION SUBMITTED IS, TO THE BEST OF MY KNOWLEDGE AND BELIEF, TRUE, ACCURATE, AND COMPLETE. I AM AWARE THAT THERE ARE SIGNIFICANT PENALTIES FOR SUBMITTING FALSE INFORMATION, INCLUDING THE POSSIBILITY OF FINE AND IMPRISONMENT FOR KNOWING VIOLATIONS.

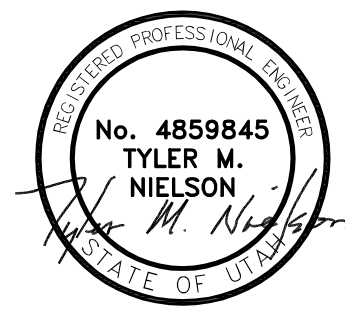
DEVELOPERS

GIBSON FAMILY LLC
4503 WEST 400 SOUTH
OGDEN, UTAH 84404



SCALE: 1" = 30'
DATE: JUNE 2012
DESIGN: I.N.
DRAWN: I.N./S.C.
CHECKED:

REVISIONS	DESCRIPTION
DATE	



GIBSON FAMILY LLC
 MARRYANN ESTATES SUBDIVISION
 4450 WEST STREET PLAN AND PROFILE
 WEBER COUNTY, UTAH

Gardner Engineering
 5875 South Adams Ave., Parkway, Suite 200 • Ogden, UT 84405 • Phone (801) 476-0202 • Fax (801) 476-0066

PLANNING
 CIVIL ENGINEERING
 LAND SURVEYING
 ARCHITECTURAL DESIGN

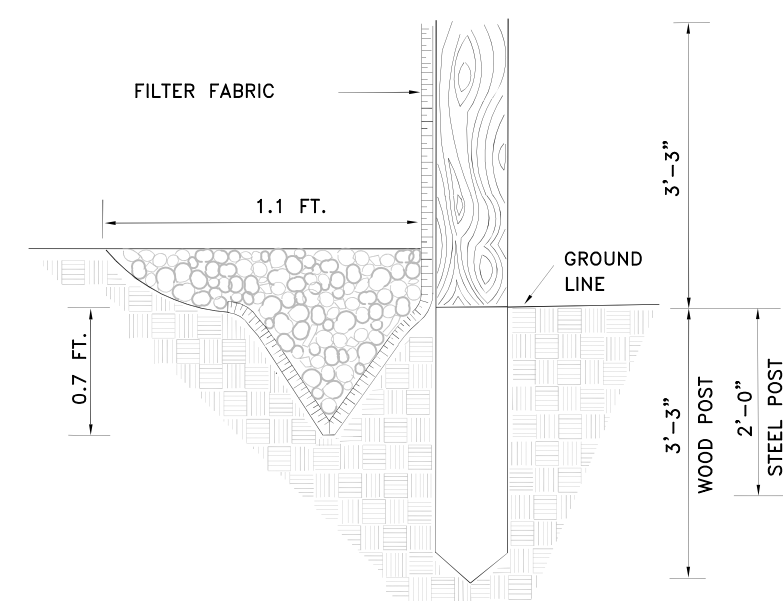
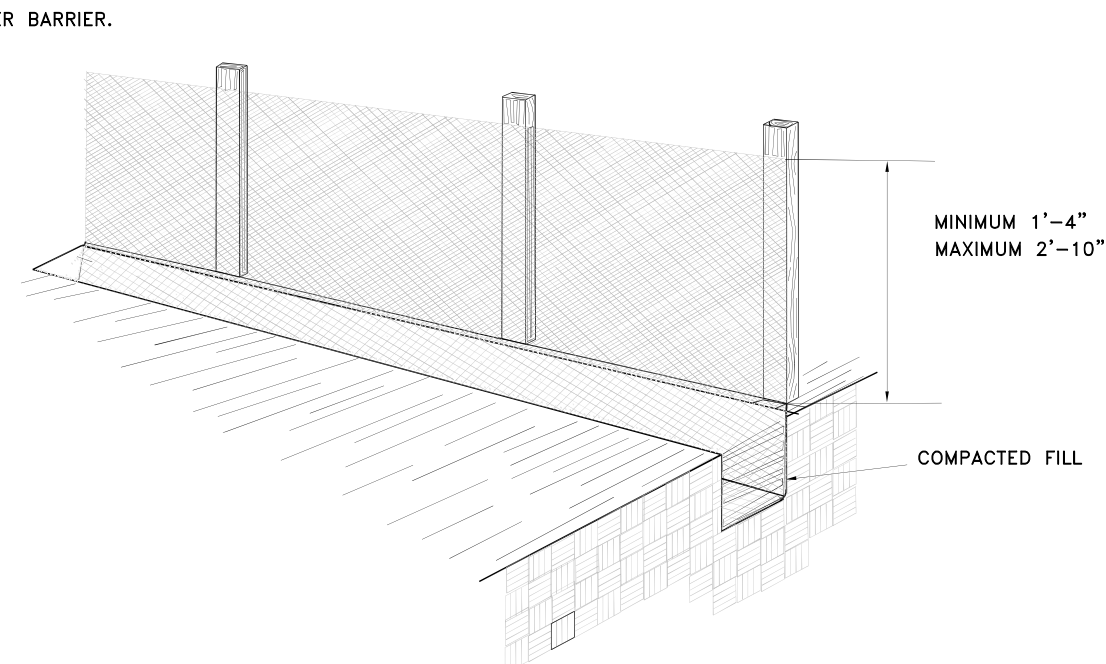
2

3

NOTE: ALL CONSTRUCTION TO CONFORM TO WEBER COUNTY STANDARDS AND SPECIFICATIONS.

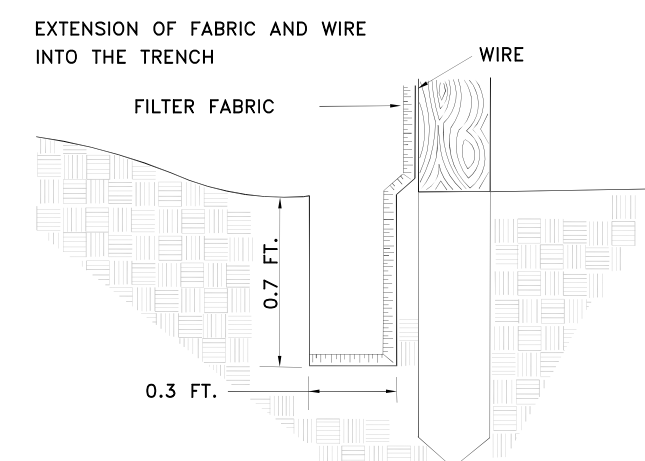
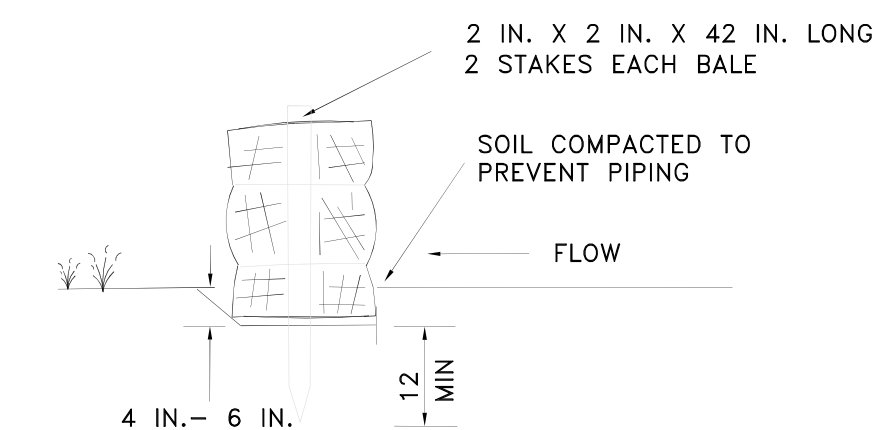
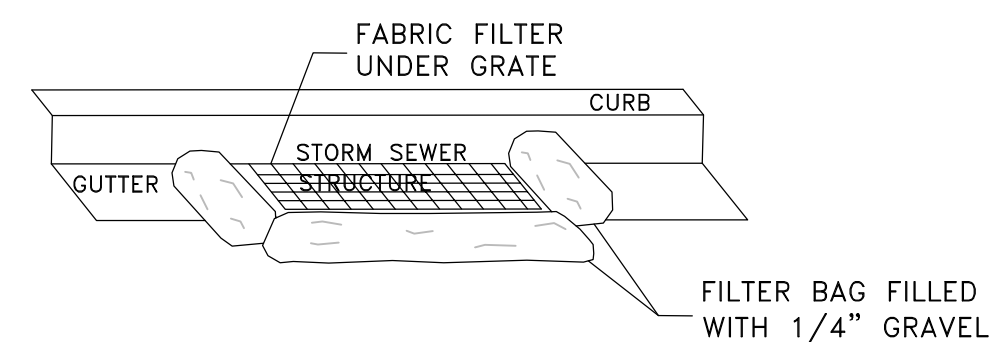
R:\2601 - Misc Survey\1211 - Hancock & Associates\4450 West Road Extension\DESIGN\PRODUCTION DWG\Roadway Design.dwg, 6/6/2012 9:22:35 AM, PDF995

INSTALL GALVANIZED STEEL WIRE MESH ON WOOD OR STEEL POST TO SUPPORT A SILT FENCE OR FILTER BARRIER.



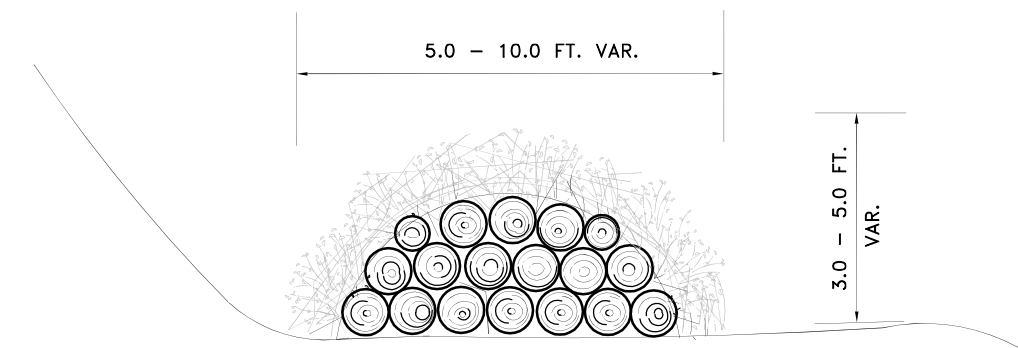
FILTER BARRIER
SCALE: N.T.S.

INLET PROTECTION



- 1-FILTER FABRIC - 3'-3" MINIMUM WIDTH
- 2-FENCE FUNCTIONS BEST IN SHEET FLOW CONDITIONS
- 3-REMOVE AND DISPOSE OF SEDIMENT WHEN ACCUMULATION REACH 50% FABRIC HEIGHT.
- 4-BACKFILL MIN 0.7 FT. THICK LAYER OF FREE DRAINING GRANULAR BACKFILL MATERIAL.

SILT FENCE
SCALE: N.T.S.



BRUSH FILTER
SCALE: N.T.S.

ALL DIMENSIONS ARE SHOWN IN INCHES (IN.) UNLESS OTHERWISE NOTED.

STORM WATER POLLUTION PREVENTION PLAN GENERAL NOTES

- A. PROHIBITION ON MOST NON-STORM WATER DISCHARGES
ONLY STORM WATER FROM THE PROJECT SITE SHALL BE ALLOWED TO FLOW INTO THE ON-SITE STORM DRAIN SYSTEM. CLEAN, NON-CHLORINATED WATER FROM THE FLUSHING OF FIRE HYDRANTS, WATER MINS, AND STORM DRAINS MAY BE DISCHARGED TO THE STORM DRAIN IF IT IS NOT ALLOWED TO COLLECT DIRT, DEBRIS, AND TRASH WHILE FLOWING TO A STORM DRAIN INLET.
- B. SOURCES OF STORM WATER POLLUTANTS
STORM WATER POLLUTANTS INCLUDE SOIL, SEDIMENT AND NUTRIENTS, OIL, GREASE, TOXIC POLLUTANTS, AND HEAVY METALS. SOURCES OF STORM WATER POLLUTANTS INCLUDE BUT ARE NOT LIMITED TO SOIL EROSION BY WATER AND/OR WIND, CLEARING OF VEGETATION, GRADING, VEHICLE AND EQUIPMENT REFUELING AND MAINTENANCE, WASHING OF CONCRETE TRUCKS, MIXERS AND HANDLING EQUIPMENT, PAINTS, SOLVENTS AND ADHESIVES, AND LANDSCAPING WORK.
- C. EROSION AND SEDIMENT CONTROLS
1-COVER EXPOSED STOCKPILES OF SOILS, CONSTRUCTION AND LANDSCAPING MATERIAL WITH HEAVY PLASTIC SHEETING.
2-IN LANDSCAPING AREAS WHERE THE VEGETATION HAS NOT ESTABLISHED GROWTH AND TAKEN HOLD, CONSTRUCT SANDBAG OR DIRT BERMS AROUND THEIR PERIMETER TO INSURE THAT WATER WILL BE CONTAINED INSIDE THE LANDSCAPING AREA AND THAT IT WILL NOT BE CONVEYED TO A STORM DRAIN INLET.
3-REVEGETATE AREAS WHERE LANDSCAPING HAS DIED OR NOT TAKEN HOLD.
4-DIVERT STORM WATER RUNOFF AROUND DISTURBED SOILS WITH BERMS OR DIRT SWALES.
- D. OTHER CONTROLS
1-WASTE DISPOSAL
A. KEEP WASTE DISPOSAL CONTAINERS COVERED.
B. PROVIDE FOR THE WEEKLY (OR MORE FREQUENT, IF NECESSARY) DISPOSAL OF WASTE CONTAINERS.
C. PROVIDE CONTAINERS AT CONVENIENT LOCATIONS AROUND THE SITE.
2-SWEEPING OF SITE
A. PROVIDE WEEKLY SWEEPING BY HAND OR MECHANICAL MEANS TO KEEP THE PAVED AREAS OF THE SITE FREE OF DUST, DIRT, AND DEBRIS.
B. DISPOSE OF ACCUMULATED DIRT IN WASTE CONTAINERS, OR HAUL IT OFF THE SITE TO A LANDFILL.
3-SANITARY/SEPTIC DISPOSAL
PORTABLE TOILETS AND OTHER SANITARY FACILITIES SHALL BE SERVICED WEEKLY AND PUMPED CLEAN BY A WASTE DISPOSAL COMPANY. NO TOXIC OR HAZARDOUS WASTE SHALL BE DISPOSED IN A PORTABLE TOILET OR IN THE ON-SITE SANITARY SEWER.
- 4-SPILLS
A. STORE ADEQUATE ABSORBENT MATERIALS, RAGS, BROOMS, SHOVELS, AND WASTE CONTAINERS ON THE SITE TO CLEANUP SPILLS OF MATERIALS SUCH AS FUEL, PAINT, SOLVENTS, OR CLEANERS. CLEAN UP MINOR SPILLS IMMEDIATELY.
B. FOR REPORTABLE QUANTITY OF HAZARDOUS OR TOXIC SUBSTANCE, SECURE THE SERVICES OF QUALIFIED PERSONNEL FOR CLEANUP AND DISPOSAL.
- 5-CONTROL OF ALLOWABLE NON-STORM WATER DISCHARGES
LANDSCAPING IRRIGATION, EROSION CONTROL MEASURES, PIPE FLUSHING AND TESTING, AND PAVEMENT WASHING ARE ALLOWED IF THEY CANNOT FEASIBLY BE ELIMINATED, COMPLY WITH THIS PLAN, DO NOT CAUSE OR CONTRIBUTE TO A VIOLATION OF WATER QUALITY STANDARDS, AND ARE NOT REQUIRED TO BE PERMITTED BY THE LOCAL REGIONAL WATER QUALITY CONTROL BOARD.
- 6-VEHICLES AND EQUIPMENT
A. FIX LEAKS OF FUEL, OIL, AND OTHER SUBSTANCES IMMEDIATELY.
B. PERFORM REFUELING AND SERVICE OF VEHICLES OR EQUIPMENT OFF-SITE WHEN POSSIBLE. IF REFUELING OR SERVICE OF EQUIPMENT IS PERFORMED ON-SITE, THEN PROVIDE AN IMPERVIOUS, CONTAINED AREA WHERE ANY SPILLS CAN BE CONTAINED WITHOUT FLOWING TO A STORM WATER INLET OR INTO THE GROUND.
C. USE DRIP PANS TO CATCH LEAKS AND SMALL SPILLS.

STORM WATER POLLUTION PREVENTION PLAN SPECIFIC NOTES

1. THIS STORM WATER POLLUTION PREVENTION PLAN (SWPPP) WAS DEVELOPED AT THE REQUEST OF THE OWNER, GIBSON FAMILY LLC, FOR THE CONSTRUCTION OF THE MARYANN ESTATES SUBDIVISION, 1ST AMENDMENT, LOCATED IN THE COUNTY OF WEBER, STATE OF UTAH.
THIS PLAN IDENTIFIES POTENTIAL SOURCES OF POLLUTANTS OF STORM WATER, PRESENTS POLLUTION CONTROL MEASURES, AND ASSISTS IN INSURING IMPLEMENTATION AND MAINTENANCE OF THE BEST MANAGEMENT PRACTICES (BMP'S) INDICATED HEREIN.
2. A NOTICE OF INTENT HAS BEEN FILED WITH THE STATE OF UTAH WATER RESOURCES CONTROL BOARD BY THE OWNER SO THAT THIS CONSTRUCTION PROJECT MAY BE COVERED UNDER THE STATE GENERAL PERMIT. THE PERMIT IS NATIONAL POLLUTION DISCHARGE ELIMINATION SYSTEM (NPDES) GENERAL PERMIT (NO. UTR _____) FOR STORM WATER DISCHARGES ASSOCIATED WITH CONSTRUCTION ACTIVITY.
3. IN THE EVENT OF A CHANGE OF OWNERSHIP, A NEW NOTICE OF INTENT SHALL BE FILED WITH THE STATE WATER RESOURCES CONTROL BOARD.
4. IN THE EVENT OF A RELEASE OF A REPORTABLE QUANTITY OF A POLLUTANT, THE CONTRACTOR SHALL ADVISE THE OWNER TO NOTIFY THE NATIONAL RESPONSE CENTER, WEBER COUNTY AND GARDNER ENGINEERING. IF NECESSARY, THIS POLLUTION PREVENTION PLAN SHOULD BE REVISED TO REFLECT THE CHANGE IN CONDITIONS OF THE CONSTRUCTION ACTIVITY. A REPORTABLE QUANTITY IS ESTABLISHED BY 40 CODE OF FEDERAL REGULATIONS (CFR) 117.3 OR 40 CFR 302.4.
5. ALL CONTRACTORS AND THEIR PERSONNEL WHOSE WORK CAN CONTRIBUTE TO OR CAUSE POLLUTION OF STORM WATER SHOULD BE MADE FAMILIAR WITH THIS POLLUTION PREVENTION PLAN. ADEQUATE TRAINING FOR IMPLEMENTATION OF THE MEASURES PRESENTED HEREIN SHALL BE PROVIDED TO THE CONTRACTORS AND THEIR PERSONNEL.
6. CHANGES IN CONSTRUCTION OR IN CONDITIONS WHICH ARE NOT COVERED BY THIS PLAN SHOULD BE BROUGHT TO THE ATTENTION OF THE OWNER AND GARDNER ENGINEERING. IF NECESSARY, THIS POLLUTION PREVENTION PLAN WILL BE REVISED TO REFLECT THE CHANGE IN CONSTRUCTION OR IN CONDITIONS.
7. ALL PREVENTION AND CLEAN UP MEASURES SHOULD BE CONDUCTED IN ACCORDANCE WITH PLAN CITY ORDINANCES, AS WELL AS STATE AND FEDERAL REGULATIONS. WASTE MATERIALS SHOULD BE DISPOSED OF IN A LEGAL MANNER.
ALL DISCHARGERS OF STORM WATER MUST COMPLY WITH THE LAWFUL REQUIREMENTS OF WEBER COUNTY AND OTHER LOCAL AGENCIES REGARDING THE DISCHARGES OF STORM WATER TO STORM DRAINS.
8. THIS PLAN DOES NOT COVER THE REMOVAL OF HAZARDOUS OR TOXIC WASTE. IN THE EVENT OF A DISCHARGE OR RELEASE OF A REPORTABLE QUANTITY OF TOXIC WASTE, WORK SHOULD BE STOPPED UNTIL THE SPILL CAN BE ASSESSED AND A MITIGATION REPORT PREPARED BY A QUALIFIED ENVIRONMENTAL CONSULTANT, AND IF NECESSARY, REVIEWED BY WEBER COUNTY AND ANY OTHER AGENCY HAVING JURISDICTION.
9. THIS SWPPP SHALL BE MADE AVAILABLE TO THE PUBLIC UNDER SECTION 308(B) OF THE CLEAN WATER ACT. UPON REQUEST BY MEMBERS OF THE PUBLIC, THE DISCHARGER SHALL MAKE AVAILABLE FOR REVIEW A COPY OF THIS SWPPP EITHER TO THE REGIONAL WATER BOARD OR DIRECTLY TO THE REQUESTER.
THIS SWPPP MUST BE KEPT ON SITE DURING CONSTRUCTION ACTIVITY AND MADE AVAILABLE UPON REQUEST OF A REPRESENTATIVE OF THE REGIONAL WATER BOARD AND/OR THE LOCAL AGENCY.
- ALL TRAINING AND RECORD KEEPING SHALL BE IN COMPLIANCE WITH THE STATE OF UTAH AND PLAN CITY.
10. CONTACTS
OWNER/DEVELOPER
VALEO MANAGEMENT, LLC
CECIL SATTERHWATE, 801-391-1345
5238 WEST 2150 NORTH
OGDEN, UTAH 84404
STATE OF UTAH
DEPARTMENT OF ENVIRONMENTAL QUALITY
DIVISION OF WATER QUALITY
299 NORTH 1450 WEST (801) 538-6146
P.O. BOX 144870
SALT LAKE CITY, UTAH 84114
U.S. EPA
ENVIRONMENTAL PROTECTION AGENCY
DENVER, COLORADO REGION VIII
800-759-4372
ENVIRONMENTAL PROTECTION AGENCY 202-475-6518
WASHINGTON, D.C. 20460
11. REFERENCES
A. UTILITY & STREET IMPROVEMENT PLANS PER GARDNER ENGINEERING DATED JUNE 2012.
B. STORM WATER POLLUTION PREVENTION PLAN PREPARED BY GARDNER ENGINEERING DATED JUNE 2012.
12. THE PROPOSED CONSTRUCTION ACTIVITY IS ROADWAY CONSTRUCTION FOR A SUBDIVISION.
13. LOCATION OF THE SITE: WEBER COUNTY, UTAH

DEFINITIONS

1. "BEST MANAGEMENT PRACTICES" (BMP'S) MEANS SCHEDULES OF ACTIVITIES, PROHIBITIONS OF PRACTICES, MAINTENANCE PROCEDURES, AND OTHER MANAGEMENT PRACTICES TO PREVENT OR REDUCE THE POLLUTION OF WATERS OF THE UNITED STATES. BMP'S ALSO INCLUDE TREATMENT REQUIREMENTS, OPERATING PROCEDURES, AND PRACTICES TO CONTROL SITE RUNOFF, SPILLAGE OR LEAKS, WASTE DISPOSAL, OR DRAINAGE FROM RAW MATERIAL STORAGE.
2. "CLEAN WATER ACT" (CWA) MEANS THE FEDERAL WATER POLLUTION CONTROL ACT ENACTED BY PUBLIC LAW 92-500 AS AMENDED BY PUBLIC LAWS 95-217, 95-576, 96-483, AND 97-111; 33 USC 1251 ET SEQ.
3. "CONSTRUCTION SITE" IS THE LOCATION OF THE CONSTRUCTION ACTIVITY.
4. "NON-STORM WATER DISCHARGE" MEANS ANY DISCHARGE TO STORM DRAIN SYSTEMS THAT IS NOT COMPOSED ENTIRELY OF STORM WATER EXCEPT DISCHARGE PURSUANT TO AN NPDES PERMIT AND DISCHARGES RESULTING FROM FIRE FIGHTING ACTIVITIES.
5. "SIGNIFICANT MATERIAL" INCLUDES, BUT IS NOT LIMITED TO RAW MATERIALS, FUELS, MATERIALS SUCH AS SOLVENTS, DETERGENTS, AND PLASTIC PELLETS, FINISHED MATERIALS SUCH AS METALLIC PRODUCTS, RAW MATERIALS USED IN FOOD PROCESSING OR PRODUCTION HAZARDOUS SUBSTANCES DESIGNATED UNDER SECTION 101(14) OF THE COMPREHENSIVE ENVIRONMENTAL RESPONSE, COMPENSATION, AND LIABILITY ACT (CERCLA); ANY CHEMICAL, THE FACILITY IS REQUIRED TO REPORT PURSUANT TO SECTION 313 OF TITLE III OF SUPERFUND AMENDMENTS AND REAUTHORIZATION ACT (SARA); FERTILIZERS, PESTICIDES; AND WASTE PRODUCTS SUCH AS ASHES, SLAG, AND SLUDGE THAT HAVE THE POTENTIAL TO BE RELEASED WITH STORM WATER DISCHARGES.
6. "SIGNIFICANT QUANTITIES" IS THE VOLUME, CONCENTRATIONS, OR MASS OF A POLLUTANT IN STORM WATER DISCHARGE THAT CAN CAUSE OR THREATEN TO CAUSE POLLUTION, CONTAMINATION, OR NUISANCE; ADVERSELY IMPACT HUMAN HEALTH OR THE ENVIRONMENT; AND CAUSE OR CONTRIBUTE TO A VIOLATION OF ANY APPLICABLE WATER QUALITY STANDARDS FOR THE RECEIVING WATER.
7. "STORM WATER" MEANS STORM WATER RUNOFF, SNOW MELT RUNOFF, SURFACE RUNOFF AND DRAINAGE. IT EXCLUDES INFILTRATION AND RUNOFF FROM AGRICULTURAL LAND.
8. "POLLUTION" MEANS THE "MANMADE OR MAN-INDUCED ALTERATION OF THE CHEMICAL, PHYSICAL, BIOLOGICAL, AND RADIOLOGICAL INTEGRITY OF WATER" (CLEAN WATER ACT SECTION 502(1)(B)). POLLUTION ALSO MEANS "AN ALTERATION OF THE QUALITY OF THE WATERS OF THE STATE BY WASTE TO A DEGREE WHICH UNREASONABLY AFFECTS EITHER... THE WATERS FOR BENEFICIAL USES... OR FACILITIES WHICH SERVE THESE BENEFICIAL USES." (CALIFORNIA WATER CODE SECTION 135061(i)).
9. "CONTAMINATION" MEANS "AN IMPAIRMENT OF THE QUALITY OF THE WATERS OF THE STATE BY WASTE TO A DEGREE WHICH CREATES A HAZARD TO THE PUBLIC HEALTH THROUGH POISONING OR THROUGH THE SPREAD OF DISEASE... INCLUDING ANY EQUIVALENT EFFECT RESULTING FROM THE DISPOSAL OF WASTE, WHETHER OR NOT WATERS OF THE STATE ARE AFFECTED."
10. "NUISANCE" MEANS "ANYTHING WHICH MEETS ALL OF THE FOLLOWING REQUIREMENTS: (1) IS INJURIOUS TO HEALTH, OR IS INDECENT OR OFFENSIVE TO THE SENSES, OR AN OBSTRUCTION TO THE FREE USE OF PROPERTY; (2) AS TO INTERFERE WITH THE COMFORTABLE ENJOYMENT OF LIFE AND PROPERTY; (3) AFFECTS AT THE SAME TIME AN ENTIRE COMMUNITY OR NEIGHBORHOOD, OR ANY CONSIDERABLE NUMBER OF PERSONS, ALTHOUGH THE EXTENT OF THE ANNOYANCE OR DAMAGE INFLICTED UPON INDIVIDUALS MAY BE UNEQUAL; (4) OCCURS DURING OR AS A RESULT OF THE TREATMENT OR DISPOSAL OF WASTES."
11. "LOCAL AGENCY" MEANS ANY AGENCY THAT IS INVOLVED WITH REVIEW, APPROVAL, OR OVERSIGHT OF THE CONSTRUCTION SITES' (a) CONSTRUCTION ACTIVITY, (b) EROSION AND SEDIMENT CONTROLS, (c) STORM WATER DISCHARGE.

- 1-DEFINITION: BALES OF HAY OR STRAW USED AS A MEANS OF CONTROLLING POLLUTION AND EROSION.
- 2-PURPOSE: TO OBSTRUCT THE FLOW OF WATER TO ALLOW DEPOSIT OF SEDIMENT AND/OR DIVERT WATER TO A SLOPE DRAIN, SEDIMENT BASIN, SEDIMENT TRAP, OR OTHER EROSION CONTROL STRUCTURE.
- 3-CONDITIONS WHERE APPLICABLE:
A-USE AT THE BOTTOM OF EMBANKMENT SLOPES TO DIVERT RUNOFF FROM SHEET FLOW AND ALSO CATCH SOME OF THE SEDIMENT PICKED UP IN THE SHEET FLOW.
B-AS CHECK DAMS IN SMALL DITCHES AND DRAINAGE AREAS.
C-ON THE LOWER SIDE OF CLEARED AREAS TO CATCH SEDIMENT FROM SHEET FLOW.
D-AS WATERPROOF CORES FOR STONE SEDIMENT DAMS.
- 4-DESIGN CRITERIA: NONE

- 5-CONSTRUCTION METHODS:
BALES OF HAY OR STRAW ARE UTILIZED TO CONTROL EROSION, TRAP SEDIMENT, AND DIVERT RUNOFF. THE BALES MUST BE BRACED FROM BEHIND WHEN CONDITIONS REQUIRE.
- 6-WEDGE LOOSE HAY OR STRAW BETWEEN BALES.
- 7-POINTS "A" MUST BE HIGHER THAN POINT "B".
- 8-ONLY 3 BALES ARE SHOWN FOR EACH CHECK DAM. MORE MAY BE REQUIRED, DEPENDING ON THE SPECIFIC APPLICATION.

SCALE: NONE
DATE: JUNE 2012
DESIGN: I.N.
DRAWN: I.N./S.C.
CHECKED:

REVISIONS	DESCRIPTION
DATE	

DWG: Roadway Design.dwg

GIBSON FAMILY LLC
MARYANN ESTATES SUBDIVISION
4450 WEST STREET PLAN AND PROFILE
WEBER COUNTY, UTAH

Gardner Engineering
PLANNING
CIVIL ENGINEERING
LAND SURVEYING
AUTOMATED THEORY

5975 South Adams Ave., Parkway, Suite 200 • Ogden, UT 84405 • Phone (801) 476-0202 • Fax (801) 476-0066