

# Cameron Cove Cluster Subdivision Landscape Plan

## Plant Table

### TREES

Quantity	Symbol	Scientific Name	Common Name	Planting Size
13	+	Acer freemanii 'Jeffersred'	Autumn Blaze Maple	2" cal.
4	⊗	Acer platanoides 'Crimson King'	Crimson King Norway Maple	2" cal.
12	⊗	Gleditsia tria. iner. 'Imperial'	Imperial Honeylocust	2" cal.
6	⊗	Picea pungens	Colorado Blue Spruce	6' B&B
6	⊗	Pinus nigra	Austrian Pine	6' B&B
4	⊗	Pyrus calleryana 'Aristocrat'	Aristocrat Flowering Pear	2" cal.
5	⊗	Zelkova serrata 'Schmidtlow'	Wireless Zelkova	2" cal.

### SHRUBS

Quantity	Symbol	Scientific Name	Common Name	Planting Size
6	⊗	Spiraea japonica 'Magic Carpet'	Magic Carpet Spirea	5 gal.

### PERENNIALS

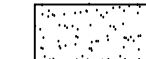
Quantity	Symbol	Scientific Name	Common Name	Planting Size
5	✱	Calamagrostis 'Karl Foerster'	Karl Foerster Grass	5 gal.
7	✱	Hemerocallis 'Stella de Oro'	Stella de Oro Daylily	1 gal.
2	✱	Iberis sempervirens	Candytuft	1 gal.
5	✱	Salvia 'May Night'	May Night Salvia	1 gal.



Decorative Boulders



Benches at Tot Lot. Tot lot shall have a play structure, to be specified by owner.

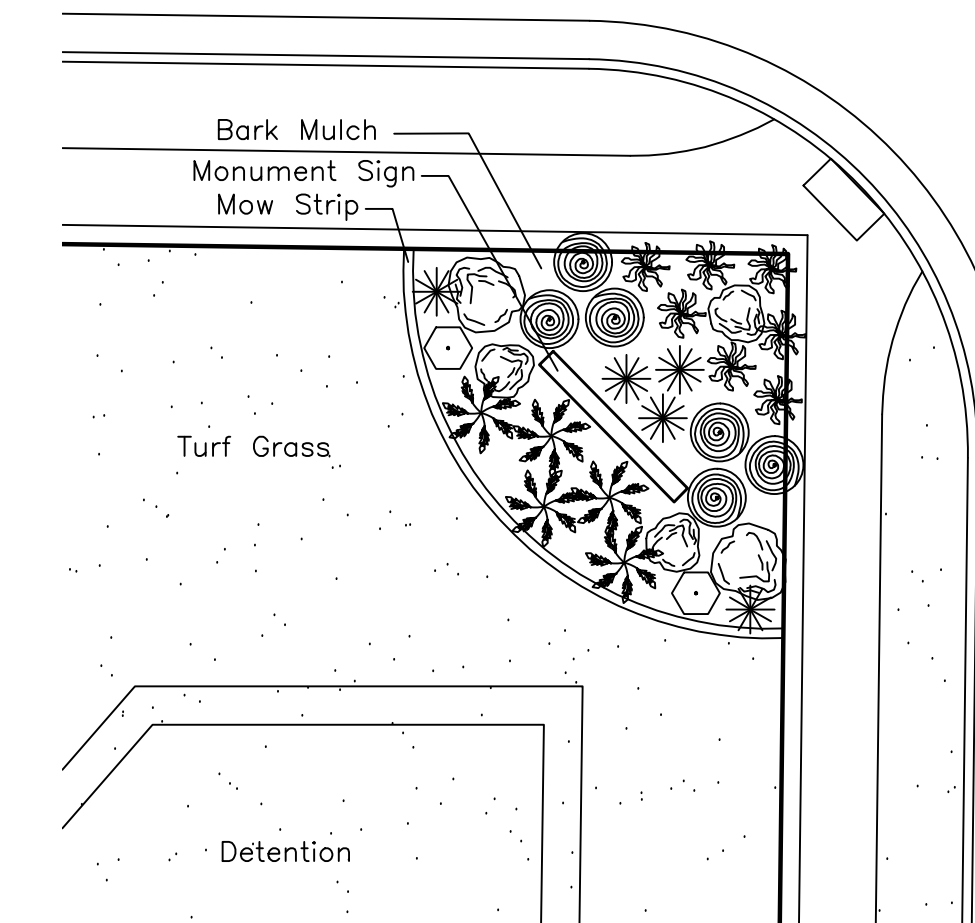


Turf Grass - To be sodded.

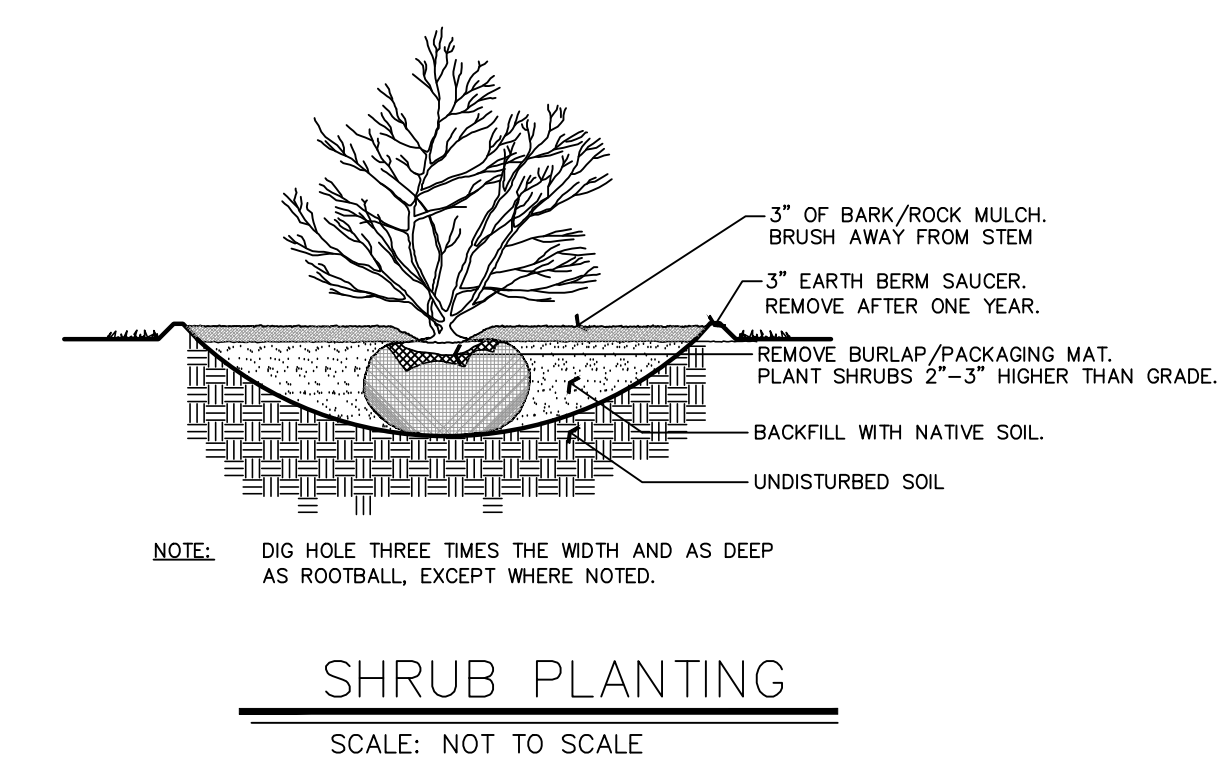
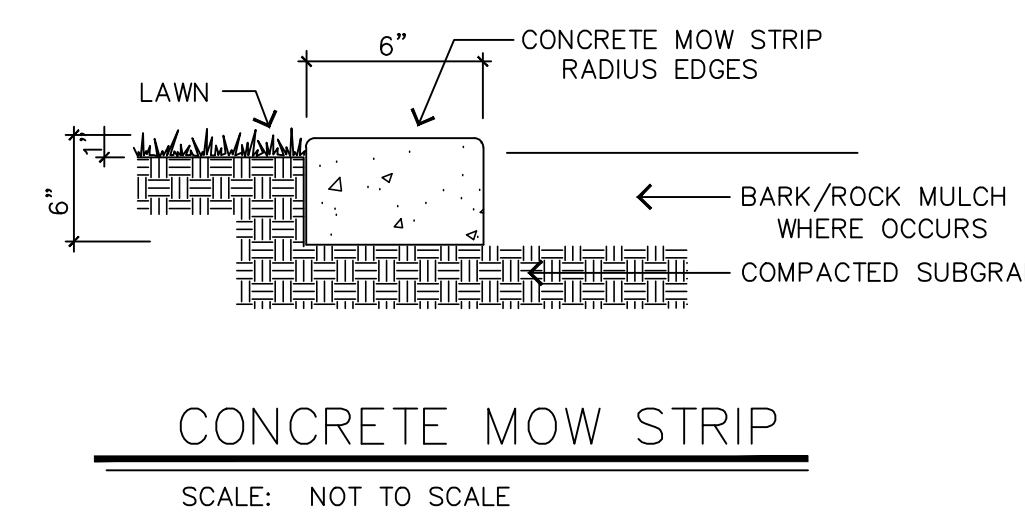
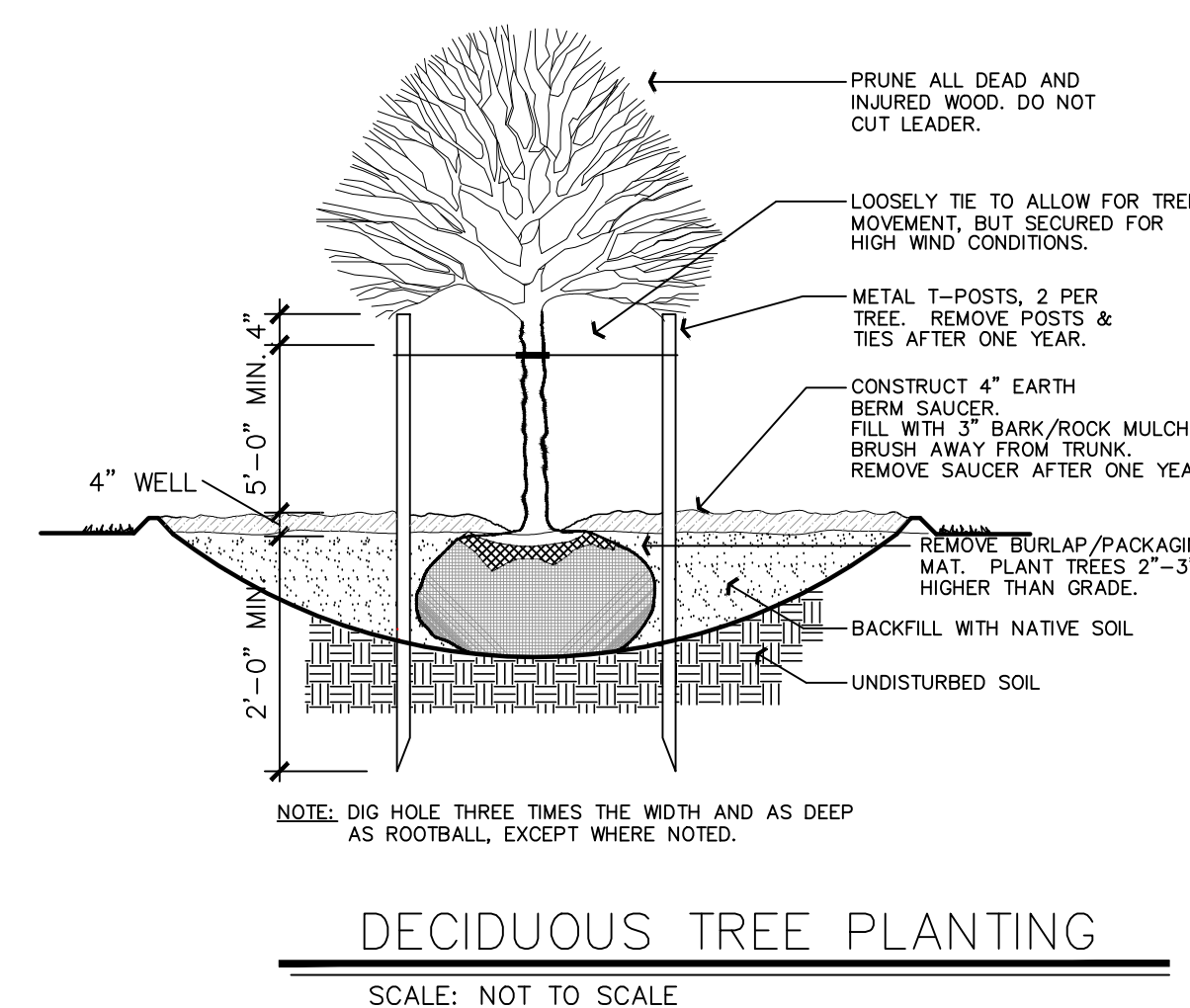
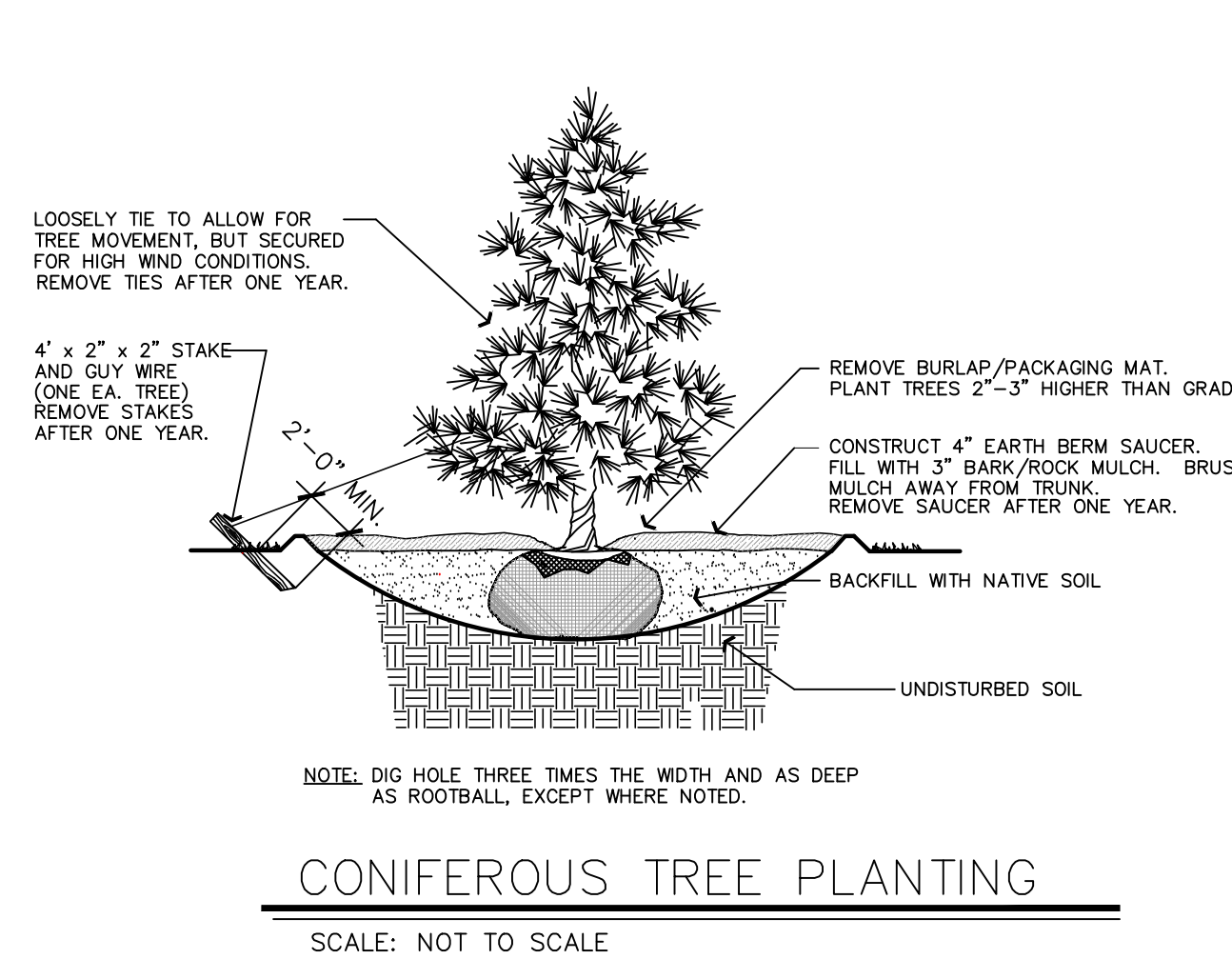
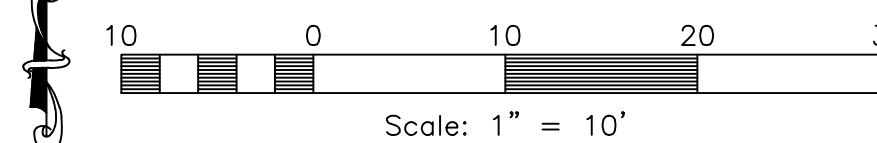
NOTE: Vary heights of evergreen trees for a natural look.

NOTE: All beds shall have a 3" layer of Shredded Bark Mulch.

NOTE: A water-conserving, automatic, underground irrigation system shall be designed by owner's licensed landscape contractor. Shrub/flower beds shall be drip irrigated. Turf grass shall be irrigated by spray heads. Monitor the system to watch for over-spray and runoff.



Entry Planting Detail



**Reeve & Associates, Inc.**  
5160 SOUTH 1500 WEST, RIVERDALE, UTAH 84405  
TEL: (801) 621-1000 FAX: (801) 621-2666 www.reeve-associates.com  
LAND PLANNERS • CIVIL ENGINEERS • LAND SURVEYORS  
TRAFFIC ENGINEERS • STRUCTURAL ENGINEERS • LANDSCAPE ARCHITECTS

REVISIONS	DATE	DESCRIPTION
	3/2/18	DR. Remove Street Trees

**Cameron Cove Cluster Subdivision**  
WEBER COUNTY, UTAH  
**Landscape Details**

**Revised: 3-1-18**

**Project Info.**

Engineer:	J. NATE REEVE, P.E.
Drafter:	C. KINGSLEY
Begin Date:	JUNE 2017
Name:	CAMERON COVE CLUSTER SUBDIVISION
Number:	3442-A48

Blue Stakes Location Center  
**Call: Toll Free 1-800-662-4111**  
Two Working Days Before You Dig

Sheet	<b>2</b>
<b>L2</b>	Sheets