



SAL - PEERY CAMP

verizon
wireless

VERIZON WIRELESS
9656 SOUTH PROSPERITY ROAD
WEST JORDAN, UTAH 84088

TAEC

Technology Associates Engineering Corporation Inc.
TECHNOLOGY ASSOCIATES

UTAH MARKET OFFICE
5710 SOUTH GREEN STREET
SALT LAKE CITY, UTAH 84123

CORPORATE OFFICE
3115 SOUTH MELROSE DRIVE, SUITE #110
CARLSBAD, CALIFORNIA 92010

DRAWN BY: JAY C
CHECKED BY: DAN T

REV	DATE	DESCRIPTION
1	03.07.2016	REVISED UTILITIES
0	02.18.2016	ZONING DRAWINGS

SITE INFORMATION

APPLICANT:
VERIZON WIRELESS
9656 SOUTH PROSPERITY ROAD
WEST JORDAN, UTAH 84088

SITE ADDRESS:
83 OGDEN CANYON ROAD
OGDEN, UTAH 84401

LATITUDE AND LONGITUDE:
N 41°14'23.16", W 111°54'18.29"

ZONING JURISDICTION:
WEBER COUNTY

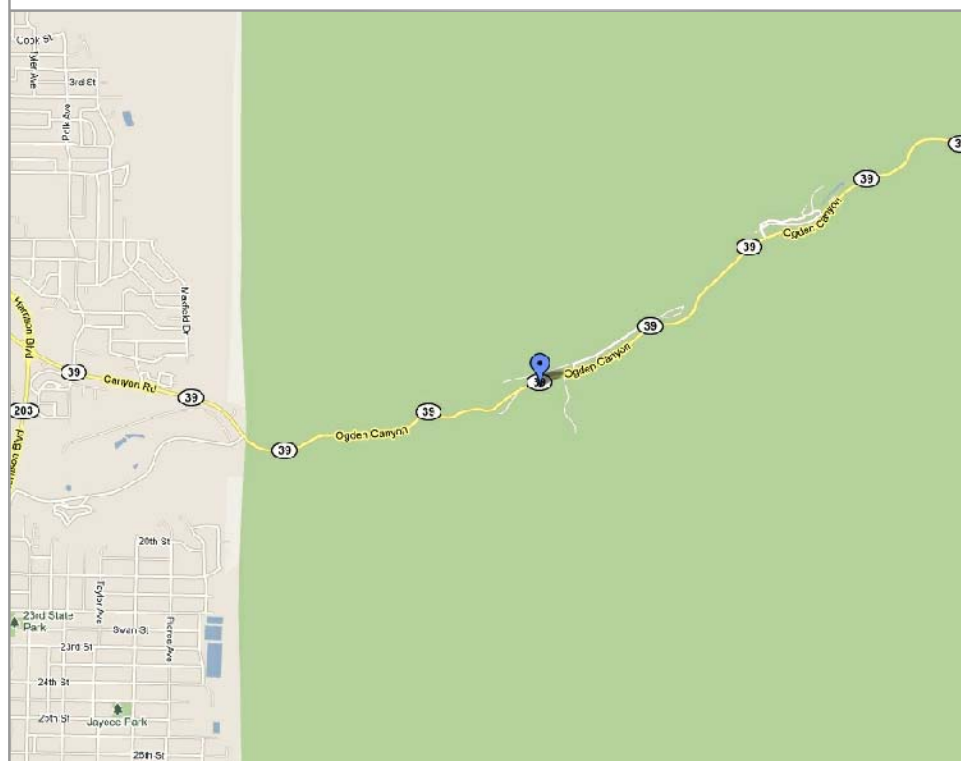
PROJECT DESCRIPTION:
VZW IS PROPOSING TO CONSTRUCT AN UNMANNED COMMUNICATIONS FACILITY CONSISTING OF ANTENNAS MOUNTED TO A NEW MONOPOLE WITH OUTDOOR EQUIPMENT AND GENERATOR

TYPE OF CONSTRUCTION:
OUTDOOR EQUIPMENT AND GENERATOR, MONOPOLE, AND ANTENNAS

HANDICAP REQUIREMENTS:
FACILITY IS UNMANNED AND NOT FOR HUMAN HABITATION, HANDICAP ACCESS REQUIREMENTS DO NOT APPLY

POWER COMPANY:
ROCKY MOUNTAIN POWER, 1-888-221-7070

LOCATION MAP



DO NOT SCALE DRAWINGS

CONTRACTOR SHALL VERIFY ALL PLANS, AND EXISTING DIMENSIONS, AND CONDITIONS ON THE JOB SITE, AND SHALL IMMEDIATELY NOTIFY THE ENGINEER IN WRITING OF ANY DISCREPANCIES BEFORE PROCEEDING WITH THE WORK OR BE RESPONSIBLE FOR SAME

DRIVING DIRECTIONS

TAKE I-15 NORTH TO 12TH STREET EXIT IN OGDEN (APPROX 40 MILES). TURN EAST ON 12TH AND FOLLOW ROAD EAST TOWARD THE MOUNTAIN. CONTINUE UP THE CANYON APPROX 1 MILE. SITE IS ON THE RIGHT SIDE JUST WEST OF THE KILN AND TRAIL HEAD.

APPROVALS

VERIZON WIRELESS REPRESENTATIVE:
VERIZON WIRELESS RF ENGINEER:
TAEC SITE ACQUISITION:
TAEC CONSTRUCTION MANAGER:
SITE OWNER:

DRAWING INDEX

SHEET NO.	SHEET TITLE	REV	REV DATE
T100	TITLE SHEET, VICINITY MAP, GENERAL SITE INFORMATION	1	03.07.2016
SURV	SITE SURVEY	1	03.07.2016
C100.1	OVERALL SITE PLAN	1	03.07.2016
C100.2	OVERALL SITE PLAN WITH AERIAL PHOTO UNDERLAY	1	03.07.2016
C101	ENLARGED SITE PLAN	1	03.07.2016
C200	SOUTHEASTERLY SITE ELEVATION	0	
C201	SOUTHWESTERLY SITE ELEVATION	0	
C202	SOUTH AND EAST SITE ELEVATIONS	0	

CONTACT INFORMATION

SITE ACQUISITION:
TECHNOLOGY ASSOCIATES EC, INC
5710 SOUTH GREEN STREET
SALT LAKE CITY, UTAH 84123
CONTACT: DANIEL THURGOOD
PHONE: 801-875-7789

CONSTRUCTION MANAGEMENT:
VERIZON WIRELESS
9656 SOUTH PROSPERITY ROAD
WEST JORDAN, UTAH 84088
CONTACT: CRAIG SKINNER
PHONE: 801-573-2878



UNDERGROUND SERVICE ALERT, CALL 'BLUE STAKES OF UTAH' @ 811 OR 1-800-662-4111
THREE WORKING DAYS BEFORE YOU DIG

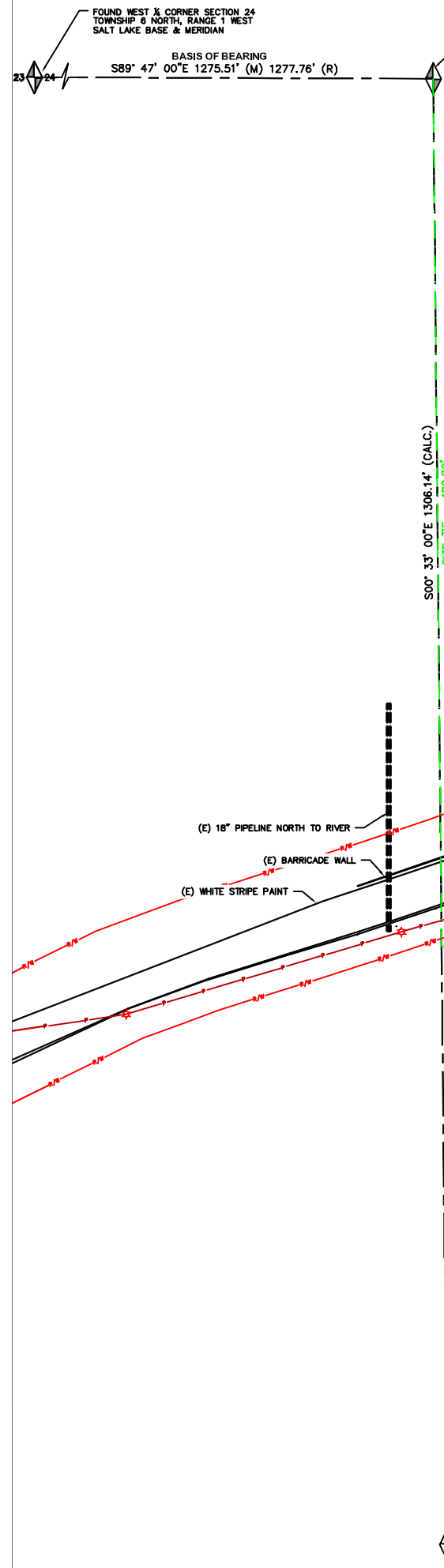


SHEET TITLE
**TITLE SHEET
VICINITY MAP
GENERAL INFORMATION**

SHEET NUMBER

T100

**SAL - PEERY CAMP
SW SEC 24, T6N, R1W
83 OGDEN CANYON ROAD
OGDEN, UTAH 84401
-- RAWLAND SITE --**



FOUND NORTHWEST CORNER OF THE NORTHWEST QUARTER OF THE SOUTHWEST QUARTER OF SECTION 24, TOWNSHIP 6 NORTH, RANGE 1 WEST, SALT LAKE BASE & MERIDIAN

BASIS OF BEARING SB89° 47' 00" E 1275.51' (M) 1277.76' (R)

S00° 33' 00" E 1306.14' (CALC.)
SITE TIE = 489.80'

P.O.B. OF A VZW 34' X 36' LEASE AREA, NOTHING SET
SITE TIE = EAST 162.35'

PARCEL INFORMATION:
NO. 13-075-0006
OGDEN CHAMBER OF COMMERCE

CALCULATED SOUTHWEST CORNER OF THE NORTHWEST QUARTER OF THE SOUTHWEST QUARTER OF SECTION 24, TOWNSHIP 6 NORTH, RANGE 1 WEST, SALT LAKE BASE & MERIDIAN

PARCEL INFORMATION:
NO. 13-075-0007
BOY SCOUTS OF AMERICA

CERTIFICATE OF SURVEY:
I, RICHARD W. MILLER, PROFESSIONAL LAND SURVEYOR, STATE OF UTAH, LICENSE NUMBER 155641, CERTIFY THAT I HAVE SUPERSEDED A SURVEY ON THE GROUND AS SHOWN HEREON:

VERIZON WIRELESS LEASE SITE DESCRIPTION:
BEGINNING AT A POINT WHICH LIES 489.80 FEET SOUTH 00°33'00" EAST AND 162.35 FEET EAST FROM THE NORTHWEST CORNER OF THE NORTHWEST QUARTER OF THE SOUTHWEST QUARTER OF SECTION 24, TOWNSHIP 6 NORTH, RANGE 1 WEST, SALT LAKE BASE AND MERIDIAN AND RUNNING THENCE SOUTH 65°00'00" EAST 34.00 FEET; THENCE SOUTH 25°00'00" WEST 36.00 FEET; THENCE NORTH 65°00'00" WEST 34.00 FEET; THENCE NORTH 25°00'00" EAST 36.00 FEET THE POINT OF BEGINNING.
CONTAINS: 1224 SQ. FT., OR 0.028 ACRES, MORE OR LESS, AS DESCRIBED.

VERIZON WIRELESS ACCESS AND UTILITY EASEMENT DESCRIPTION:
A 12 FOOT WIDE ACCESS AND UTILITY EASEMENT FOR THE PURPOSE OF INGRESS AND EGRESS AND INSTALLING UNDERGROUND UTILITIES, BEING 6 FEET ON EACH SIDE OF THE FOLLOWING DESCRIBED CENTERLINE:
BEGINNING AT A POINT WHICH LIES 512.15 FEET SOUTH 00°33'00" EAST ALONG SECTION LINE AND 196.85 FEET EAST FROM THE NORTHWEST CORNER OF THE NORTHWEST QUARTER OF THE SOUTHWEST QUARTER OF SECTION 24, TOWNSHIP 6 NORTH, RANGE 1 WEST, SALT LAKE BASE AND MERIDIAN AND RUNNING THENCE SOUTH 65°00'00" EAST 25.71 FEET; THENCE NORTH 65°00'00" WEST 25.71 FEET RETRACING THE PREVIOUS CALL; THENCE SOUTH 25°00'00" WEST 18.35 FEET; THENCE NORTH 79°29'20" EAST 46.21 FEET; THENCE NORTH 70°34'12" EAST 23.10 FEET; THENCE NORTH 51°52'08" EAST 26.48 FEET; THENCE NORTH 29°33'16" EAST 27.11 FEET; THENCE NORTH 08°17'31" EAST 25.63 FEET; THENCE NORTH 46°40'29" WEST 21.80 FEET; THENCE NORTH 46°52'52" WEST 19.80 FEET; THENCE NORTH 18°23'36" WEST 25.15 FEET TO A POINT THAT IS 8.00' PERPENDICULARLY SOUTH OF THE SOUTH RIGHT-OF-WAY LINE OF STATE ROAD 39 (OGDEN CANYON ROAD); THENCE RUNNING PARALLEL WITH AND 8.00 FEET PERPENDICULARLY SOUTH OF THE AFORESAID RIGHT-OF-WAY THE NEXT TWO CALLS: (1) NORTH 71°36'24" EAST 41.01 FEET AND (2) NORTH 72°39'37" EAST 7.63 FEET; THENCE LEAVING THE AFORESAID RIGHT-OF-WAY LINE AND RUNNING THENCE SOUTH 17°54'11" EAST 10.34 FEET TO AN EXISTING POWER POLE AND THE POINT OF TERMINATION.
CONTAINS: 0.084 ACRES, MORE OR LESS, AS DESCRIBED.

NARRATIVE:
(1) THE PURPOSE OF THIS SURVEY IS TO LOCATE AND SURVEY A PROPOSED COMMUNICATIONS TOWER SITE.
(2) THE BASIS OF BEARING USED FOR THIS SURVEY IS AS SHOWN ON THIS PLAT, FROM FOUND MONUMENTS AS LOCATED IN THE FIELD.
(M) = MEASURED DISTANCE.
(R) = RECORDED DISTANCE.
(3) TITLE REPORT ITEM #14 IS A ROCKY MOUNTAIN BELL TELEPHONE COMPANY EASEMENT THROUGH THE SOUTHWEST QUARTER OF SECTION 24, HOWEVER NO SPECIFIC DESCRIPTION FOR THIS EASEMENT IS DESCRIBED.



TAEC
Technology Associates Engineering Corporation
TECHNOLOGY ASSOCIATES

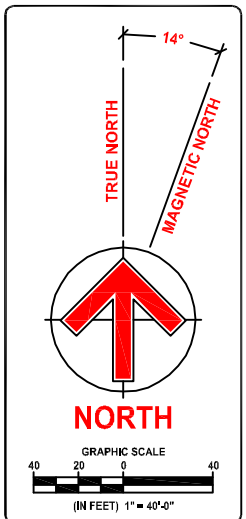
UTAH MARKET OFFICE
9847 SOUTH 500 WEST
SANDY, UTAH 84070

NORTHWEST REGIONAL OFFICE
4800 SW MEADOWS ROAD, SUITE 300
LAKE OSWEGO, OREGON 97035

SURVEY PREPARED BY:
MILLER ASSOCIATES INC.
3225 W. CALIFORNIA AVE., SUITE 202
SALT LAKE CITY, UTAH 84104
PHONE: 801-975-1083
FAX: 801-975-1081

PROJECT NO: 11042
DRAWN BY: JULIA W
CHECKED BY: RICHARD M

REV	DATE	DESCRIPTION
1	03.07.2016	REVISED UTILITY
0	04.25.2011	SITE SURVEY



SAL - PEERY CAMP
SW SEC 24, T6N, R1W
OGDEN CANYON HIGHWAY
OGDEN, UTAH
--- RAWLAND SITE ---

SHEET TITLE
SITE SURVEY

SHEET NUMBER
SURV

INFORMATION FOR THE CENTER OF THE PROPOSED SITE
STATE PLANE COORDINATES - NAD 83 (FT)
NORTHING=3611339.21, EASTING=1529012.00

GEODETIC COORDINATES - NAD 83
LATITUDE = N 41°14'23.16"
LONGITUDE = W 111°54'18.29"

GROUND ELEVATION - NAVD88
4841.21' A.M.S.L.

STATE OF UTAH, NORTH ZONE

ASAC INFORMATION SHEET 91:003

INFORMATION REGARDING SURVEY DATA SUBMITTED TO THE FAA

FAA Order 8260.19c requires proponents of certain proposed construction (located beneath instrument procedures) provide the FAA with a site survey and/or letter, from a licensed land surveyor, which certifies the site coordinates and the surface elevation at the site. On October 15, 1992, the FAA started using the North American Datum of 1983 (NAD-83), and therefore all site coordinates should be based on NAD-83. The FAA requires that the survey letter contain an accuracy statement that meets accuracy tolerances required by the FAA. The most requested tolerances are +/- 50 feet in the horizontal and +/- 20 feet in the vertical (2-C). When the site coordinates and/or site elevation can be certified to a greater accuracy than requested by the FAA, please do so.

In order to avoid FAA processing delays, the original site survey or certifying letter should be attached to the 7460 when it is filed at the FAA's regional office. It must be signed and sealed by the licensed land surveyor having performed or supervised the survey.

The FAA accuracy codes and a sample accuracy statement are listed below.

ACCURACY CODES:

<u>HORIZONTAL</u>		<u>VERTICAL</u>	
<u>Code</u>	<u>Tolerance</u>	<u>Code</u>	<u>Tolerance</u>
1	+/- 15 ft	A	+/- 3 ft
2	+/- 50 ft	B	+/- 10 ft
3	+/- 100 ft	C	+/- 20 ft
4	+/- 250 ft	D	+/- 50 ft
5	+/- 500 ft	E	+/- 125 ft
6	+/- 1000 ft	F	+/- 250 ft
7	+/- 1/2 NM	G	+/- 500 ft
8	+/- 1 NM	H	+/- 1000 ft
9	Unknown	I	Unknown

Date: OCTOBER 24, 2011

Re: SAL - PEERY CAMP

SW 1/4 OF SECTION 24, TOWNSHIP 6 NORTH, RANGE 1 WEST, SALT LAKE MERIDIAN

I certify that the latitude of N 41°14'23.16", and the longitude of W 111°54'18.29", are accurate to within 15 feet horizontally and the site elevation of 4641.21 feet, AMSL (American Mean Sea Level), is accurate to within +/- 3 feet vertically. The horizontal datum (coordinates) are in terms of the North American Datum of 1983 (NAD-83) and are expressed as degrees, minutes and seconds, to the nearest (tenth/hundredth) of a second. The vertical datum (heights) are in terms of the (NAVD88) and are determined to the nearest foot.



Professional Licensed Land Surveyor:
1-A FAA Letter

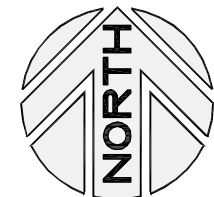
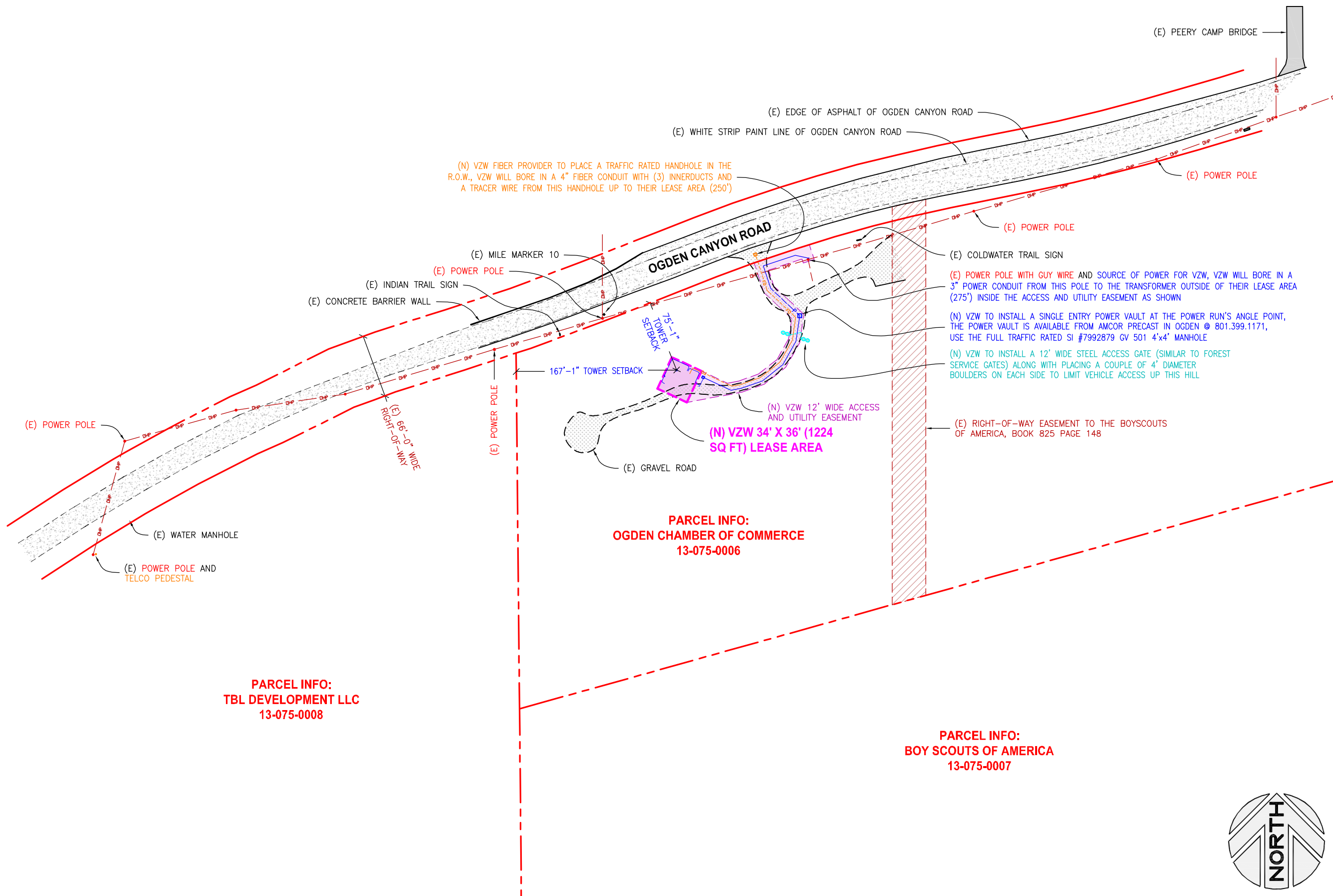
Richard W. Miller, Utah LS no. 155641

REV	DATE	DESCRIPTION
1	03.07.2016	REVISED UTILITIES
0	02.18.2016	ZONING DRAWINGS

SAL - PEERY CAMP
SW SEC 24, T6N, R1W
83 OGDEN CANYON ROAD
OGDEN, UTAH 84401
-- RAWLAND SITE --

SHEET TITLE
OVERALL SITE PLAN

SHEET NUMBER
C100.1

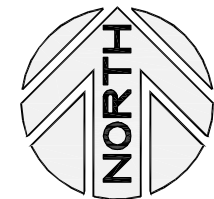
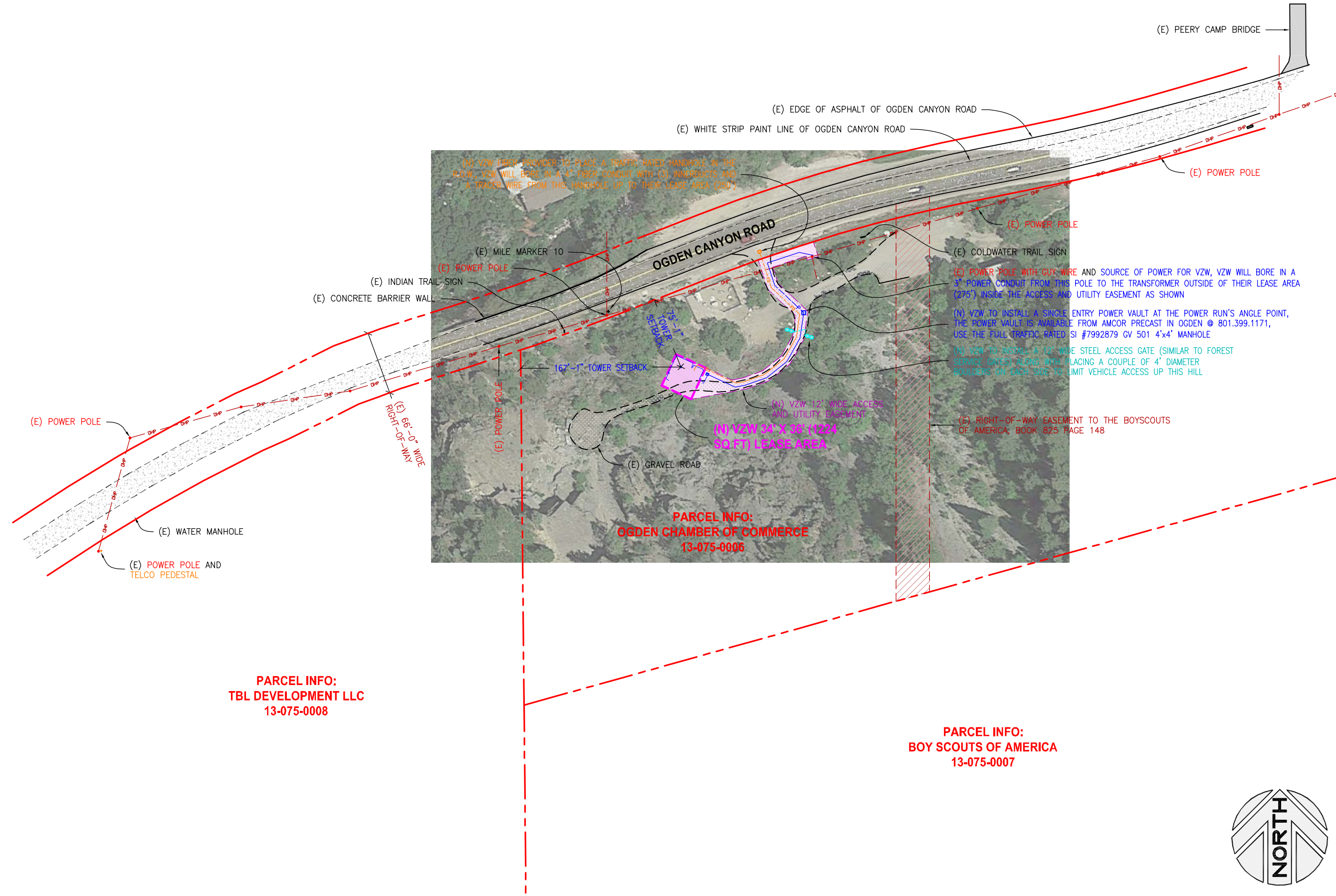


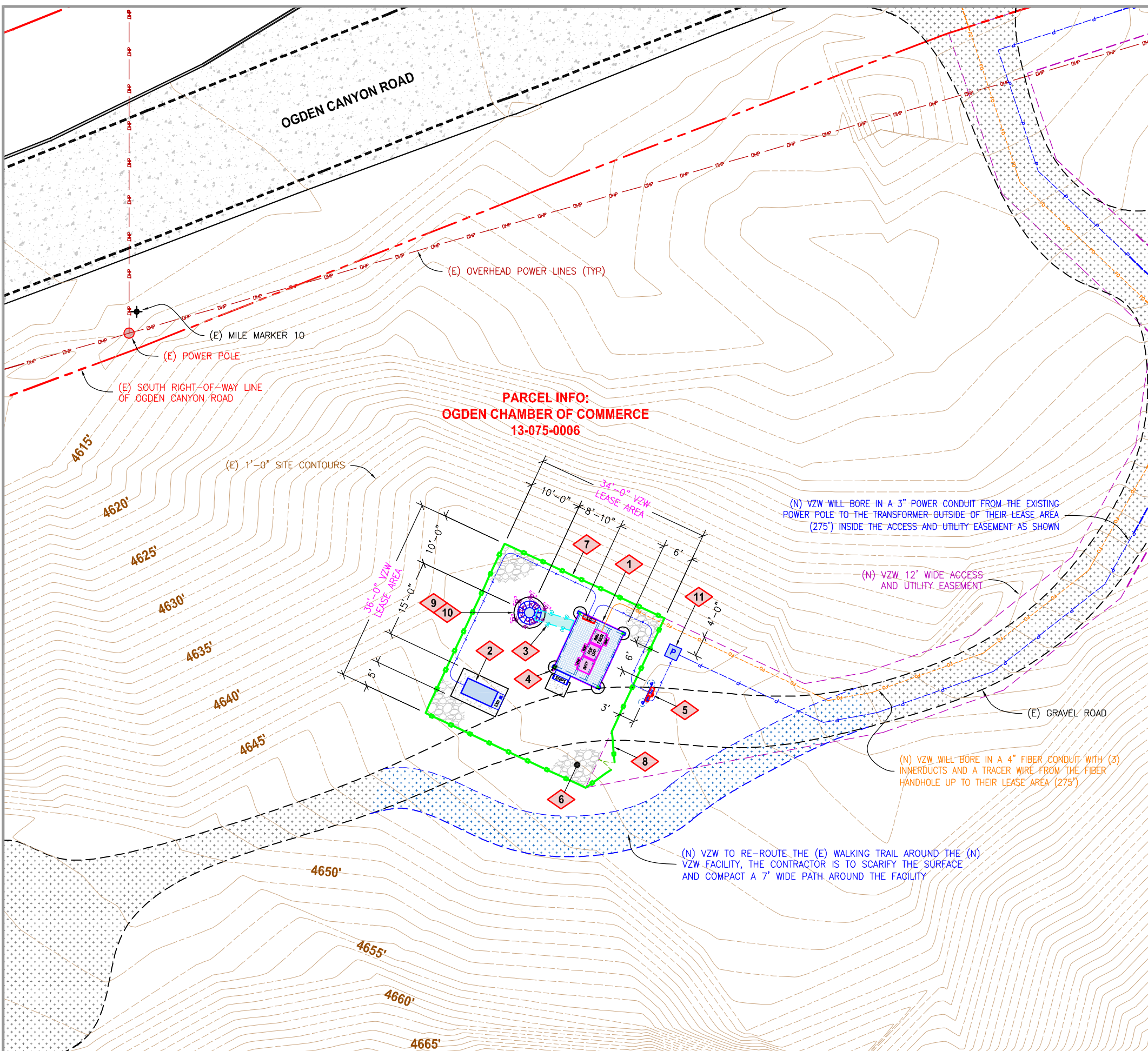
REV	DATE	DESCRIPTION
1	03.07.2016	REVISED UTILITIES
0	02.18.2016	ZONING DRAWINGS

SAL - PEERY CAMP
SW SEC 24, T6N, R1W
83 OGDEN CANYON ROAD
OGDEN, UTAH 84401
-- RAWLAND SITE --

SHEET TITLE
**OVERALL SITE PLAN
WITH AERIAL PHOTO
UNDERLAY**

SHEET NUMBER
C100.2





KEYED NOTES

- 1 VZW EQUIPMENT CABINETS ARE TO BE INSTALLED UPON A 9'-6" X 12' STEEL PLATFORM THAT WILL SIT UPON (4) 2'-6"Ø CONCRETE PIERS. THE VZW CONTRACTOR WILL BE REQUIRED TO INTERCONNECT THE EQUIPMENT CABINETS AS REQ'D BY ATTACHING SEAL TIGHT CONDUITS BENEATH THE PLATFORM, AND POWER THE CABINETS BY INSTALLING G.R.C. CONDUITS FROM THE ILC CABINET AS REQ'D. SEE C301/1 FOR EQUIPMENT LAYOUT AND S-SHEETS FOR PLATFORM CONSTRUCTION DETAILS AND FOUNDATIONS.
- 2 VZW SD030 30KW EXTERNAL DIESEL GENERATOR (8'-3" T) WITH A LEVEL 2 SOUND ENCLOSURE TO BE INSTALLED UPON A 6' X 9'-6" CONCRETE FOUNDATION, SEE C302/2. THE VZW CONTRACTOR WILL NEED TO RUN A 3/4" AND 2" CONDUIT FROM THE ILC CABINET TO THE GENERATOR FOR ALARMS AND POWER, SEE E202/1. THE CONTRACTOR WILL ALSO NEED TO INSTALL A SHIELDED ALARM CABLE FROM THE GENERATOR TO THE ILC CABINET (3/4" CONDUIT), THEN ONTO THE ALARM BLOCK IN THE BBU CABINET.
- 3 VZW ICE BRIDGE, SEE C300/3 AND E200.
- 4 VZW GPS ANTENNA TO BE MOUNTED TO ONE OF THE SOLAR SHIELD SUPPORT LEGS, SEE C300/1 AND E200.
- 5 VZW UTILITY RACK, SEE C302/1.
- 6 VZW TO FINISH THE SITE WITH 6" OF 3/4" CLEAN CRUSHED ROCK WITH NO FINES, SEE C300/2 AND 'SITE WORK NOTES' ON C303.
- 7 VZW 8' TALL CEDAR FENCING.
- 8 VZW 6' WIDE BY 8' TALL CEDAR GATES, (2) TOTAL.
- 9 VZW 40' TALL FLANGED MONOPOLE (24"Ø MAX) WITH CONCRETE FOUNDATION, SEE TOWER MANUFACTURER SHOP DRAWINGS FOR DESIGN AND SPECIFICATIONS.
- 10 VZW 6' TALL FLUSH MOUNT ANTENNAS, (2) PER SECTOR (4 TOTAL) AT A 36" CENTERLINE, TO BE MOUNTED TO MONOPOLE USING A VALMONT RDS-23072 ANTENNA MOUNT (OR EQUAL), REFER TO VZW RF CONFIGURATION SHEET.
- 11 VZW REMOTE RADIO HEADS (8 TOTAL) AND RAYCAP OVP BOXES (2 TOTAL) AND ARE TO BE MOUNTED TO MONOPOLE USING A VALMONT RDS-23072 ANTENNA MOUNT (OR EQUAL) AT A 27' CENTERLINE.



VERIZON WIRELESS
9656 SOUTH PROSPERITY ROAD
WEST JORDAN, UTAH 84088

TAEC
Technology Associates Engineering Corporation Inc.
TECHNOLOGY ASSOCIATES

UTAH MARKET OFFICE
5710 SOUTH GREEN STREET
SALT LAKE CITY, UTAH 84123

CORPORATE OFFICE
3115 SOUTH MELROSE DRIVE, SUITE #110
CARLSBAD, CALIFORNIA 92010

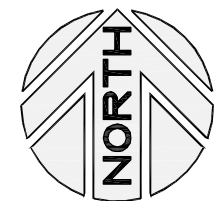
DRAWN BY: JAY C
CHECKED BY: DAN T

REV	DATE	DESCRIPTION
1	03.07.2016	REVISED UTILITIES
0	02.18.2016	ZONING DRAWINGS

SAL - PEERY CAMP
SW SEC 24, T6N, R1W
83 OGDEN CANYON ROAD
OGDEN, UTAH 84401
-- RAWLAND SITE --

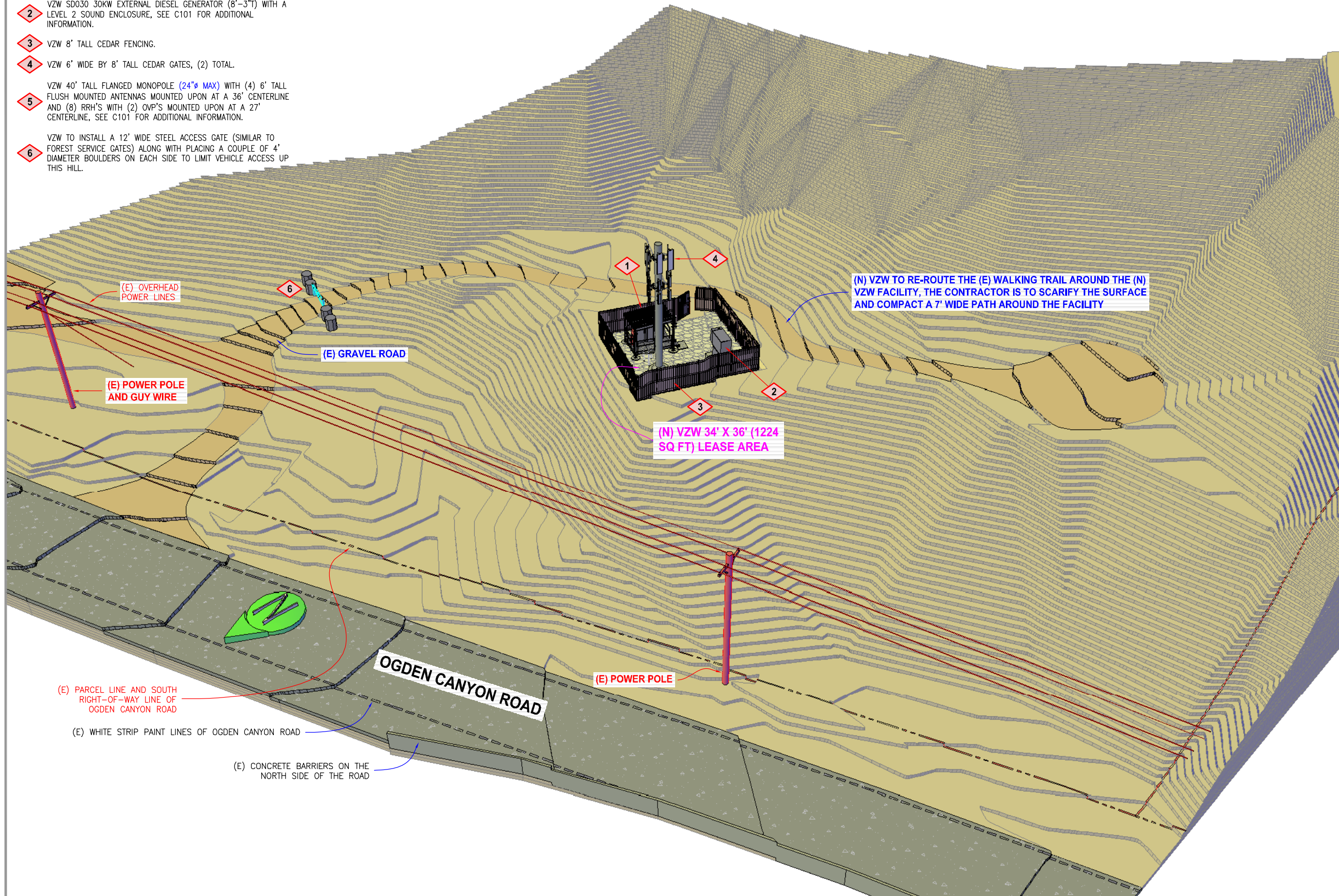
SHEET TITLE
ENLARGED SITE PLAN

SHEET NUMBER
C101



KEYED NOTES

- 1 VZW EQUIPMENT CABINETS ARE TO BE INSTALLED UPON A 9'-6" X 12' STEEL PLATFORM, SEE C101 FOR ADDITIONAL INFORMATION.
- 2 VZW SD030 30KW EXTERNAL DIESEL GENERATOR (8'-3" T) WITH A LEVEL 2 SOUND ENCLOSURE, SEE C101 FOR ADDITIONAL INFORMATION.
- 3 VZW 8' TALL CEDAR FENCING.
- 4 VZW 6' WIDE BY 8' TALL CEDAR GATES, (2) TOTAL.
- 5 VZW 40' TALL FLANGED MONOPOLE (24" Ø MAX) WITH (4) 6' TALL FLUSH MOUNTED ANTENNAS MOUNTED UPON AT A 36' CENTERLINE AND (8) RRH'S WITH (2) OVP'S MOUNTED UPON AT A 27' CENTERLINE, SEE C101 FOR ADDITIONAL INFORMATION.
- 6 VZW TO INSTALL A 12' WIDE STEEL ACCESS GATE (SIMILAR TO FOREST SERVICE GATES) ALONG WITH PLACING A COUPLE OF 4' DIAMETER BOULDERS ON EACH SIDE TO LIMIT VEHICLE ACCESS UP THIS HILL.



VERIZON WIRELESS
 9656 SOUTH PROSPERITY ROAD
 WEST JORDAN, UTAH 84088

TAEC

Technology Associates Engineering Corporation Inc.
TECHNOLOGY ASSOCIATES

UTAH MARKET OFFICE
 5710 SOUTH GREEN STREET
 SALT LAKE CITY, UTAH 84123

CORPORATE OFFICE
 3115 SOUTH MELROSE DRIVE, SUITE #110
 CARLSBAD, CALIFORNIA 92010

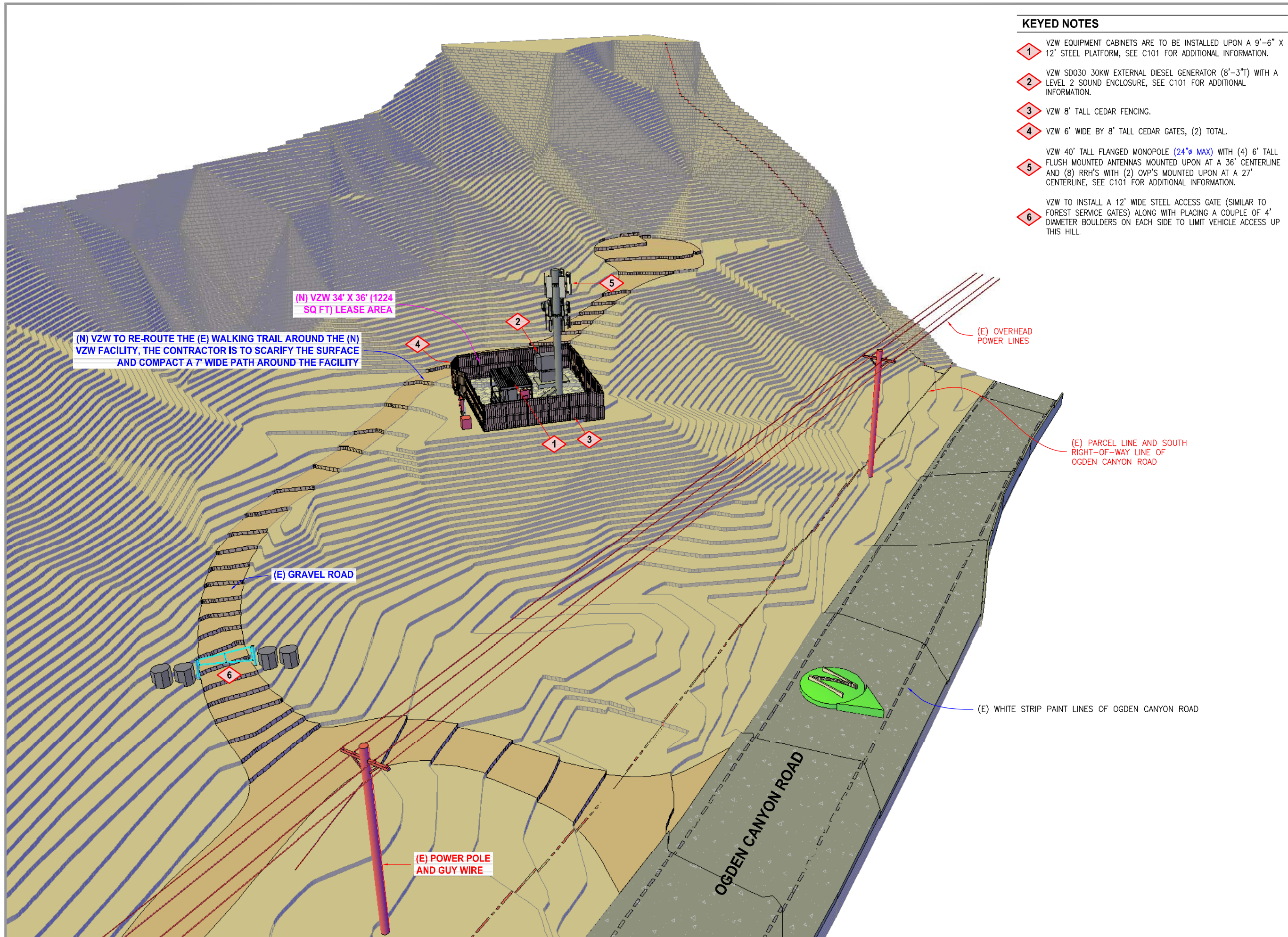
DRAWN BY: JAY C
 CHECKED BY: DAN T

REV	DATE	DESCRIPTION
1	03.07.2016	REVISED UTILITIES
0	02.18.2016	ZONING DRAWINGS

SAL - PEERY CAMP
 SW SEC 24, T6N, R1W
 83 OGDEN CANYON ROAD
 OGDEN, UTAH 84401
 -- RAWLAND SITE --

SHEET TITLE
**SOUTHEASTERLY
 SITE ELEVATION**

SHEET NUMBER
C200



KEYED NOTES

- 1 VZW EQUIPMENT CABINETS ARE TO BE INSTALLED UPON A 9'-6" X 12' STEEL PLATFORM, SEE C101 FOR ADDITIONAL INFORMATION.
- 2 VZW SD030 30KW EXTERNAL DIESEL GENERATOR (8'-3") WITH A LEVEL 2 SOUND ENCLOSURE, SEE C101 FOR ADDITIONAL INFORMATION.
- 3 VZW 8' TALL CEDAR FENCING.
- 4 VZW 6' WIDE BY 8' TALL CEDAR GATES, (2) TOTAL.
- 5 VZW 40' TALL FLANGED MONOPOLE (24"Ø MAX) WITH (4) 6' TALL FLUSH MOUNTED ANTENNAS MOUNTED UPON AT A 36' CENTERLINE AND (8) RRH'S WITH (2) OVP'S MOUNTED UPON AT A 27' CENTERLINE, SEE C101 FOR ADDITIONAL INFORMATION.
- 6 VZW TO INSTALL A 12' WIDE STEEL ACCESS GATE (SIMILAR TO FOREST SERVICE GATES) ALONG WITH PLACING A COUPLE OF 4' DIAMETER BOULDERS ON EACH SIDE TO LIMIT VEHICLE ACCESS UP THIS HILL.

(N) VZW 34' X 36' (1224 SQ FT) LEASE AREA

(N) VZW TO RE-ROUTE THE (E) WALKING TRAIL AROUND THE (N) VZW FACILITY, THE CONTRACTOR IS TO SCARIFY THE SURFACE AND COMPACT A 7' WIDE PATH AROUND THE FACILITY

(E) GRAVEL ROAD

(E) POWER POLE AND GUY WIRE

(E) OVERHEAD POWER LINES

(E) PARCEL LINE AND SOUTH RIGHT-OF-WAY LINE OF OGDEN CANYON ROAD

(E) WHITE STRIP PAINT LINES OF OGDEN CANYON ROAD



VERIZON WIRELESS
9656 SOUTH PROSPERITY ROAD
WEST JORDAN, UTAH 84088



TECHNOLOGY ASSOCIATES

UTAH MARKET OFFICE
5710 SOUTH GREEN STREET
SALT LAKE CITY, UTAH 84123

CORPORATE OFFICE
3115 SOUTH MELROSE DRIVE, SUITE #110
CARLSBAD, CALIFORNIA 92010

DRAWN BY: JAY C

CHECKED BY: DAN T

REV	DATE	DESCRIPTION
1	03.07.2016	REVISED UTILITIES
0	02.18.2016	ZONING DRAWINGS

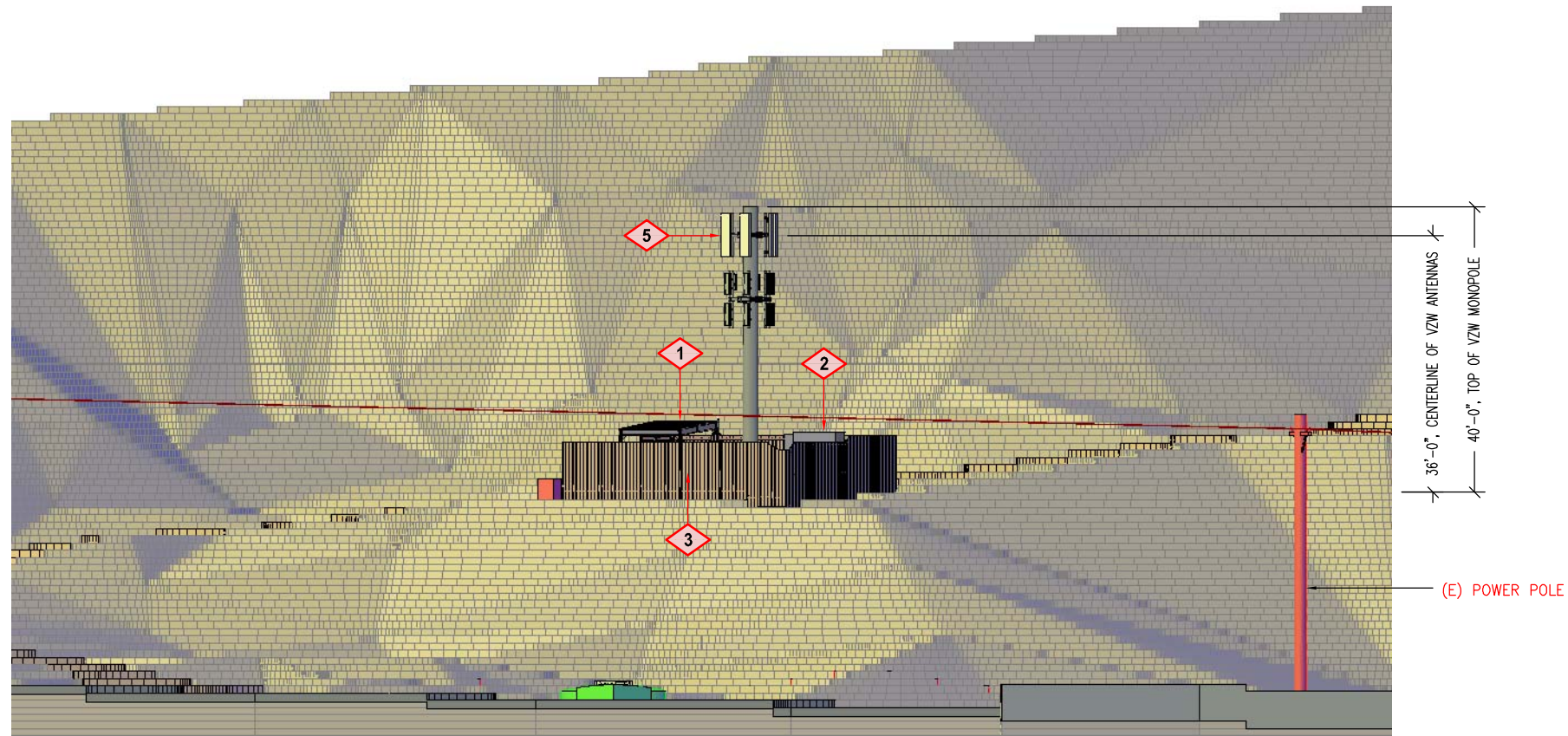
SAL - PEERY CAMP
SW SEC 24, T6N, R1W
83 OGDEN CANYON ROAD
OGDEN, UTAH 84401
-- RAWLAND SITE --

SHEET TITLE
**SOUTHWESTERLY
SITE ELEVATION**

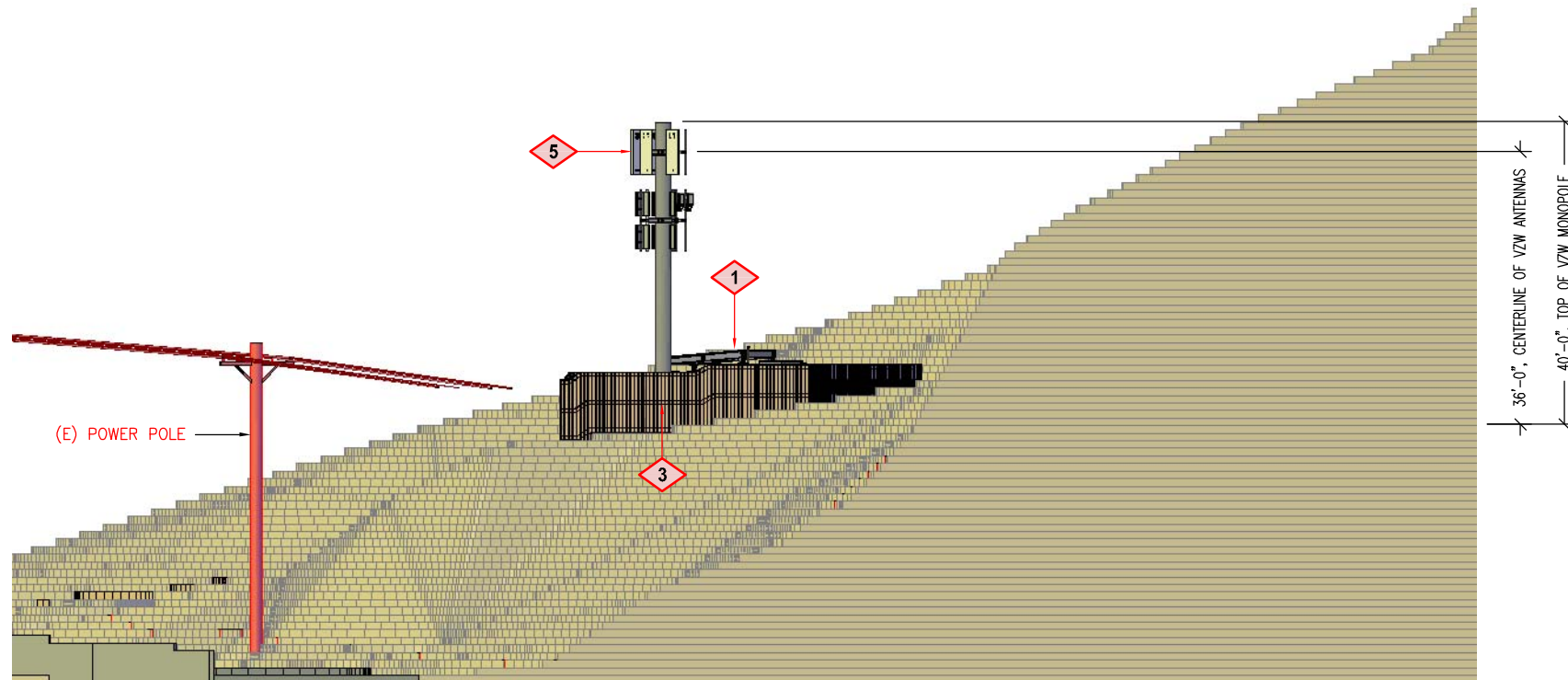
SHEET NUMBER
C201

KEYED NOTES

- 1 VZW EQUIPMENT CABINETS ARE TO BE INSTALLED UPON A 9'-6" X 12' STEEL PLATFORM, SEE C101 FOR ADDITIONAL INFORMATION.
- 2 VZW SD030 30KW EXTERNAL DIESEL GENERATOR (8'-3") WITH A LEVEL 2 SOUND ENCLOSURE, SEE C101 FOR ADDITIONAL INFORMATION.
- 3 VZW 8' TALL CEDAR FENCING.
- 4 VZW 6' WIDE BY 8' TALL CEDAR GATES, (2) TOTAL.
- 5 VZW 40' TALL FLANGED MONOPOLE (24"Ø MAX) WITH (4) 6' TALL FLUSH MOUNTED ANTENNAS MOUNTED UPON AT A 36' CENTERLINE AND (8) RRH'S WITH (2) OVP'S MOUNTED UPON AT A 27' CENTERLINE, SEE C101 FOR ADDITIONAL INFORMATION.
- 6 VZW TO INSTALL A 12' WIDE STEEL ACCESS GATE (SIMILAR TO FOREST SERVICE GATES) ALONG WITH PLACING A COUPLE OF 4' DIAMETER BOULDERS ON EACH SIDE TO LIMIT VEHICLE ACCESS UP THIS HILL.



SITE ELEVATION - LOOKING SOUTH



SITE ELEVATION - LOOKING EAST



VERIZON WIRELESS
9656 SOUTH PROSPERITY ROAD
WEST JORDAN, UTAH 84088

TAEC

Technology Associates Engineering Corporation Inc.
TECHNOLOGY ASSOCIATES

UTAH MARKET OFFICE
5710 SOUTH GREEN STREET
SALT LAKE CITY, UTAH 84123

CORPORATE OFFICE
3115 SOUTH MELROSE DRIVE, SUITE #110
CARLSBAD, CALIFORNIA 92010

DRAWN BY: JAY C
CHECKED BY: DAN T

REV	DATE	DESCRIPTION
1	03.07.2016	REVISED UTILITIES
0	02.18.2016	ZONING DRAWINGS

SAL - PEERY CAMP
SW SEC 24, T6N, R1W
83 OGDEN CANYON ROAD
OGDEN, UTAH 84401
-- RAWLAND SITE --

SHEET TITLE
**SOUTH AND EAST
SITE ELEVATIONS**

SHEET NUMBER

C202