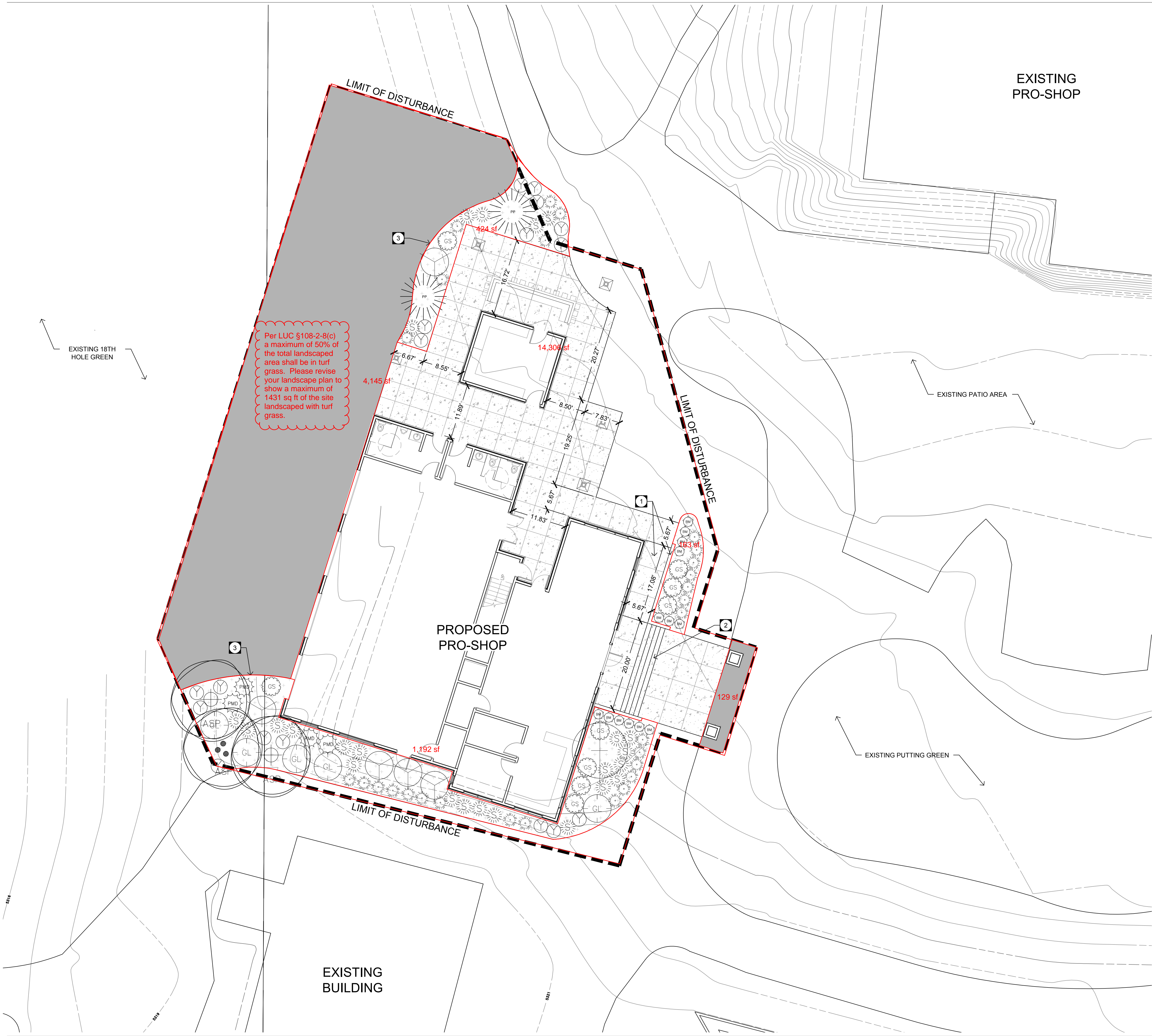
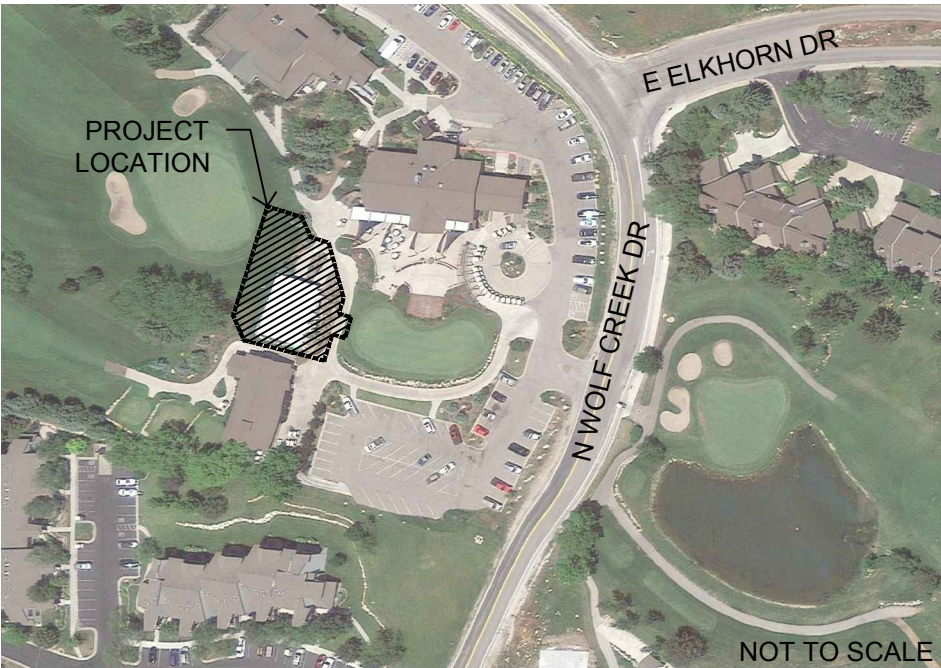


path: L:\084 Wolf Creek\06_Design\Report Core\Golf Club\06_Design\ file name: L1.0 SITE LANDSCAPE PLAN_Golf Club.dwg | plot date: September 12, 2017 | plotted by: darian



LOCATION MAP:



SITE PLAN REQUIREMENTS:

- A. TOTAL AREA OF DISTURBANCE: 14,160 SQ.FT.
- B. BUILDING COVERAGE: 4,470 SQ.FT. (32%)
- C. ASPHALT/CONCRETE COVERAGE: 3,735 SQ.FT. (26%)
- D. LANDSCAPE COVERAGE: 5,955 SQ.FT. (42%)
- E. EXISTING ZONING: COMMERCIAL VALLEY 2 (CV-2)
- F. PROPOSED LAND USE: COMMERCIAL VALLEY 2 (CV-2)
- G. TAX ID NUMBER:
- H. PARKING REQUIREMENTS: N/A
- I. LIGHTING: NO SITE LIGHTING, LIGHTING SHALL BE BUILDING MOUNTED.
- J. EASEMENTS: NO EASEMENTS WILL BE AFFECTED IN THE AREA OF DISTURBANCE.

SITE PLAN KEYNOTES:

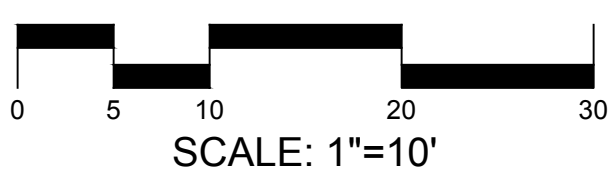
- 1 ADA ACCESSIBLE RAMP AND CHEEK WALL WITH HANDRAIL
- 2 CONCRETE STAIR AND CHEEK WALL WITH HANDRAIL
- 3 METAL LANDSCAPE EDGE

MATERIALS LEGEND:

CONCRETE FLATWORK, STANDARD GRAY COLOR, MEDIUM BROOM FINISH

PLANT SCHEDULE

Qty.	Symbol	Botanical Name Common Name	Size
TREES			
2		Picea omorika 'Bruns' Bruns Serbian Spruce	7'-8' B&B
1		Populus tremuloides Quaking Aspen	12' CLUMP
2		Populus tremuloides Quaking Aspen	2" CAL.
SHRUBS			
13		Caryopteris x clandonensis 'Dark Knight' Dark Knight Bluebeard	5 Gal.
1		Hamamelis virginiana Witch Hazel	10 Gal.
4		Pinus strobus 'Blue Shag' Blue Shag Eastern White Pine	5 Gal.
9		Spirea x bumalda 'Goldflame' Goldflame Spirea	5 Gal.
5		Rhus aromatica 'Grow Low' Grow Low Sumac	5 Gal.
5		Syringa patula 'Miss Kim' Miss Kim Lilac	5 Gal.
GRASSES/PERENNIALS			
24		Panicum virgatum 'Shenandoah' Shenandoah Switch Grass	1 Gal.
28		Pennisetum alopecuroides Hameln Fountain Grass	1 Gal.
17		Achillea x 'Moonshine' Moonshine Yarrow	1 Gal.
TURF/ MULCH MATERIALS			
8,342 S.F.		Turf Grass	SOD
23 C.Y.		Soil Pep/Shredded Bark Mulch As Approved by the Landscape Architect	4" Depth



WOLF CREEK RESORT

WOLF CREEK PRO-SHOP

WEBER COUNTY, UTAH

PREPARED FOR:
WOLF CREEK GOLF
COURSE
3900 NORTH WOLF CREEK DR.
EDEN, UT 84310

DATE: SEPTEMBER 2017
PROJECT: 000.0000.84
DRAWN BY: DW
REVIEW BY: EL
VERSION: DESIGN REVIEW

REVISIONS:

SHEET TITLE:
SITE &
LANDSCAPE PLAN

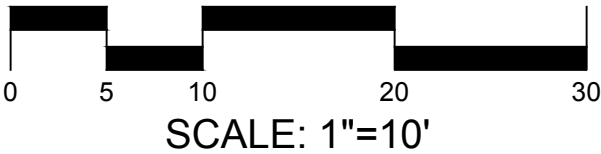
SHEET NUMBER:

L1.0

path: L:\084 Wolf Creek\06_Design\Resort Core\Golf Club\06_Design\ file name: G1.0 GRADING PLAN_Golf Club.dwg | plot date: September 12, 2017 | plotted by: darian



- GRADING PLAN NOTES:**
- A. SPOT ELEVATIONS INDICATE TOP OF CONCRETE SURFACE UNLESS OTHERWISE NOTED AS FOLLOWS:
 - A.A. TC - TOP OF CURB
 - A.B. BC - BOTTOM OF CURB
 - A.C. TW - TOP OF WALL
 - A.D. BW - BOTTOM OF WALL
 - A.E. SW - SIDEWALK
 - A.F. FF: FINISHED FLOOR ELEVATION
 - A.G. MX: MATCH EXISTING
 - A.H. 322.0 - SPOT ELEVATION
 - B. ADD 5000 FEET TO ALL SPOT ELEVATIONS FOR ACTUAL ELEVATION.
 - C. ALL DRAINAGE SHALL FLOW IN EXISTING DRAINAGE PATTERNS AND INTO EXISTING STRUCTURES.



WOLF CREEK RESORT

WOLF CREEK PRO-SHOP

WEBER COUNTY, UTAH

PREPARED FOR:
WOLF CREEK GOLF COURSE
3900 NORTH WOLF CREEK DR.
EDEN, UT 84310

DATE:	SEPTEMBER 2017
PROJECT:	000.0000.84
DRAWN BY:	DW
REVIEW BY:	EL
VERSION:	DESIGN REVIEW
REVISIONS:	

SHEET TITLE:
GRADING PLAN

SHEET NUMBER:
G1.0