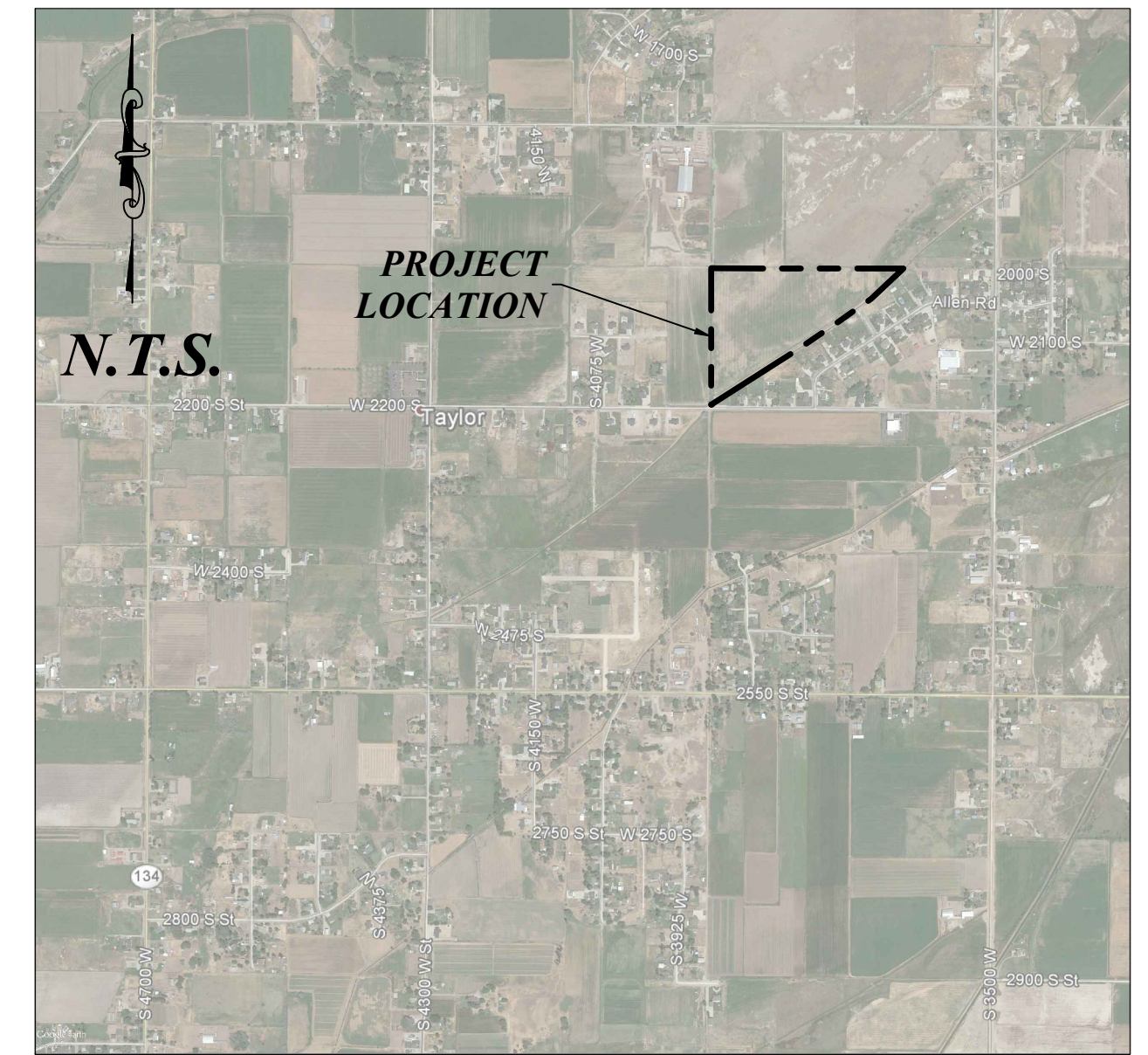
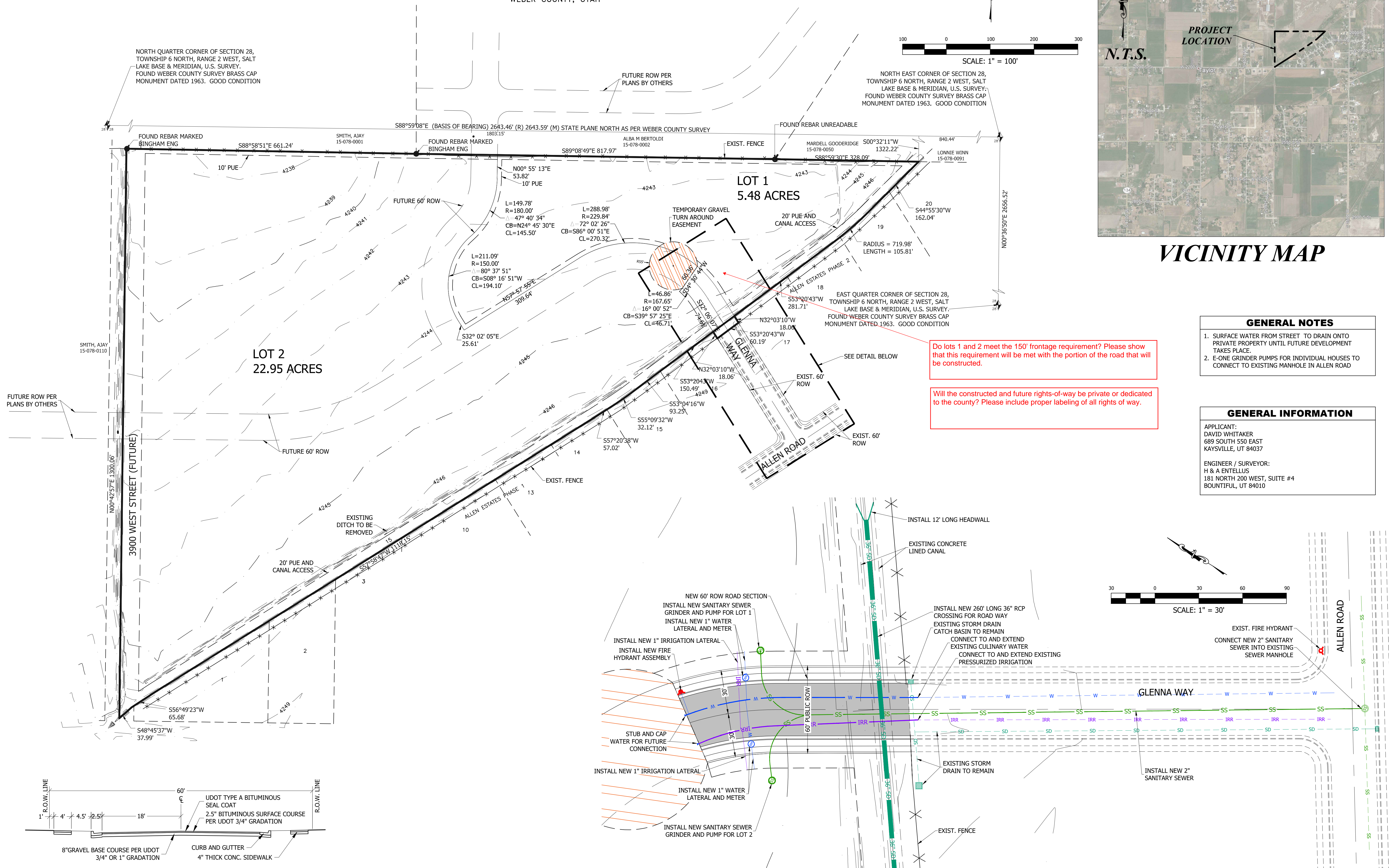


SADDLEBRED ACRES SUBDIVISION

PART OF THE NORTHEAST 1/4 OF SECTION 28, TOWNSHIP 6 NORTH, RANGE 2 WEST, SALT LAKE BASE & MERIDIAN, U.S. SURVEY
WEBER COUNTY, UTAH



VICINITY MAP

GENERAL NOTES

1. SURFACE WATER FROM STREET TO DRAIN ONTO PRIVATE PROPERTY UNTIL FUTURE DEVELOPMENT TAKES PLACE.
2. E-ONE GRINDER PUMPS FOR INDIVIDUAL HOUSES TO CONNECT TO EXISTING MANHOLE IN ALLEN ROAD

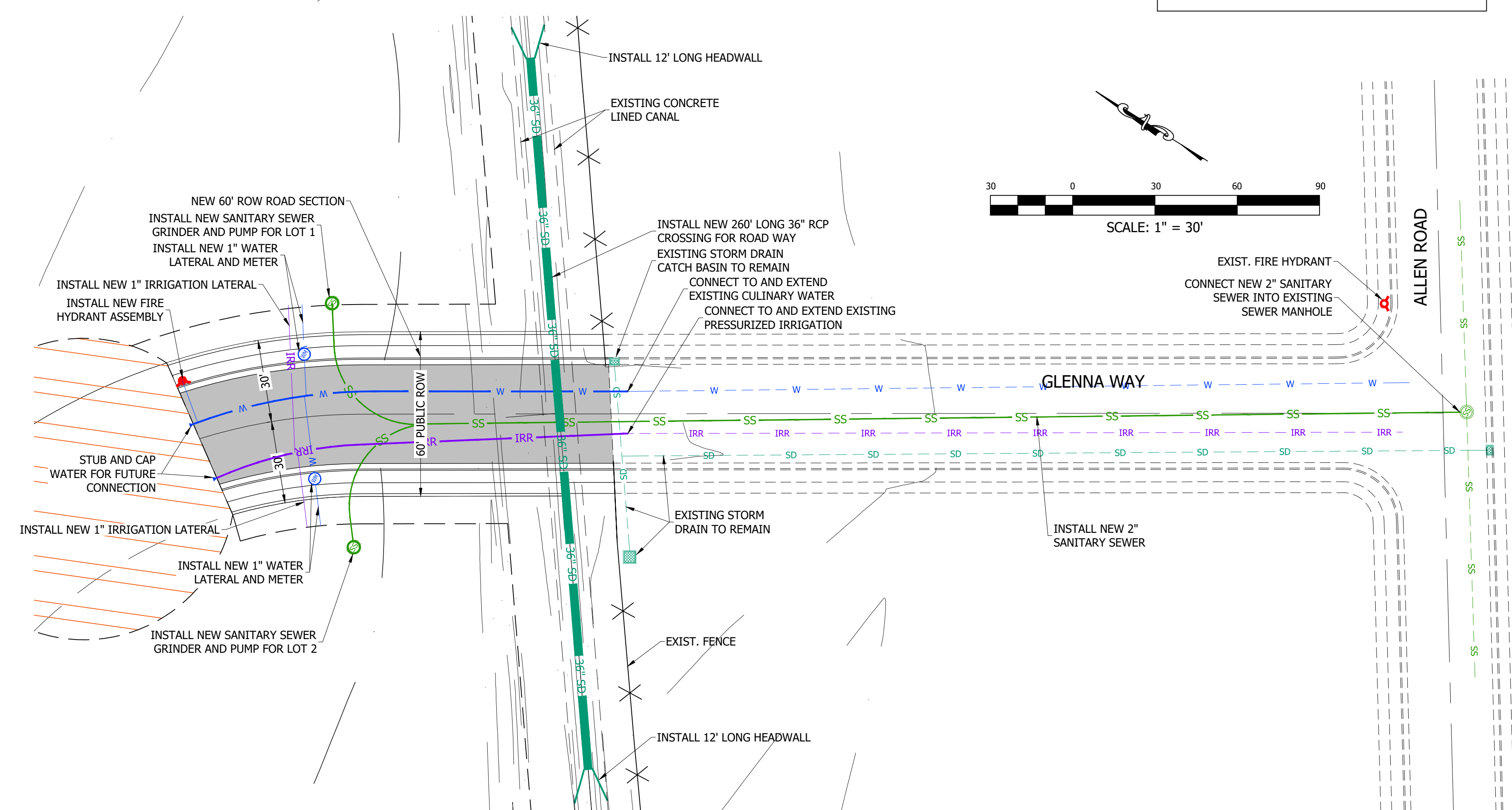
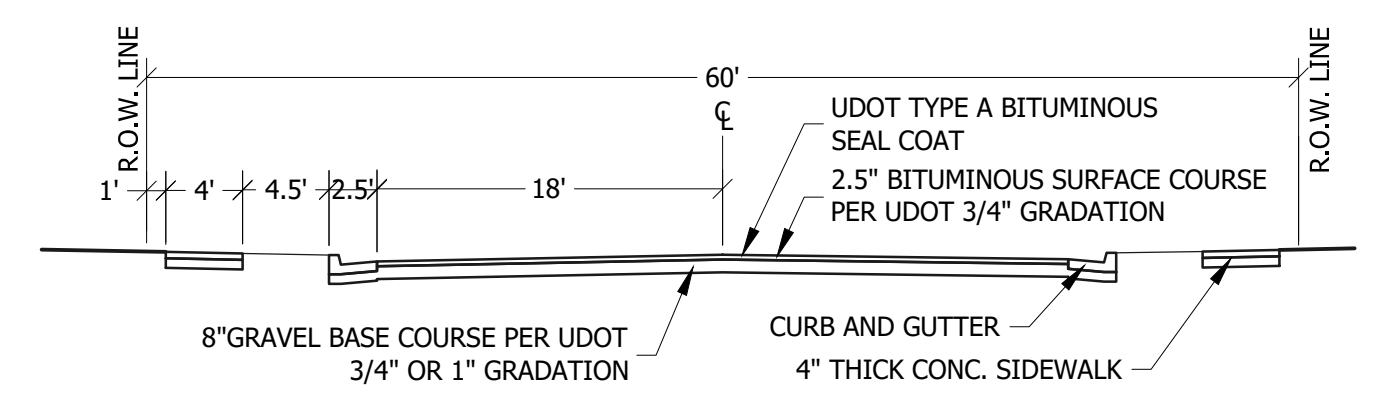
Do lots 1 and 2 meet the 150' frontage requirement? Please show that this requirement will be met with the portion of the road that will be constructed.

Will the constructed and future rights-of-way be private or dedicated to the county? Please include proper labeling of all rights of way.

GENERAL INFORMATION

APPLICANT:
DAVID WHITAKER
689 SOUTH 550 EAST
KAYSVILLE, UT 84037

ENGINEER / SURVEYOR:
H & A ENTELLUS
181 NORTH 200 WEST, SUITE #4
BOUNTIFUL, UT 84010



181 North 200 West, Suite #4
Bountiful, Utah 84010
Phone 801-298-2236

HA Entellus

PRELIMINARY SUBDIVISION PLAN
SADDLEBRED ACRES SUBDIVISION

Parcel # 15-078-0006
LOCATED IN THE NE 1/4 OF SECTION 28, T.6N., R.2W., S.1.E.&M.
TAYLOR CITY, WEBER COUNTY, UTAH

DATE	BY	DESCRIPTION
06/29/2017	JKS	DRAWN
06/29/2017	JKS	APPROVED
1034014	JKS	PROJECT
1034014	JKS	PROJECT

C400
PRELIMINARY SUBDIVISION PLAN