

STORMWATER AND DETENTION-STORAGE CALCULATIONS

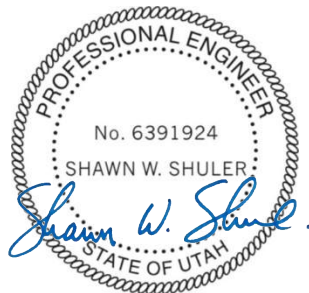
FOR THE

SNOWBASIN RESORT

**CANYON RIM PARKING LOT IMPROVEMENT
PROJECT**

SEPTEMBER 11, 2017

SNOWBASIN RESORT, HUNTSVILLE, UTAH



OWNER:



Snowbasin Resort Company
3925 E. Snowbasin Road
Huntsville, UT 84317
(801) 620-1100

ENGINEER:



Horrocks Engineers, Inc.
4905 South 1500 West, Suite 100
Riverdale, Utah 84405
(801) 621-1025

SNOWBASIN RESORT – CANYON RIM PARKING LOT IMPROVEMENT PROJECT
STORMWATER CALCULATIONS

Areas for Calculations

	Existing			Proposed		
	Sq. Ft.	Acres	%	Sq. Ft.	Acres	%
Total Drainage Area	295,830	6.79	100	295,830	6.79	100
Asphalt Pavement	52,825	1.21	17.9	126,725	2.91	42.8
Gravel Pavement	31,680	0.73	10.7	0	0	0
Undisturbed Vegetation	211,325	4.85	71.4	169,105	3.88	57.2

Hydrologic Groups (NRCS Web Soil Survey Application – See Appendix A)

Bertag silt loam, BAF: Soil Group C
 Crooked Creek silty clay loam, Ct: Soil Group D

Base SCS Runoff Curve Number for Soil Groups (Part 630, National Engineering Handbook, Figure 9-1)

BAF: CN = 75

Ct: CN = 85 (Figure 9-1)

USE THE MORE INTENSIVE CURVE NUMBER FOR THE WHOLE SITE ==> CN = 85

Composite Curve Numbers (Part 630, National Engineering Handbook, Equation 9-1)

Existing Composite Curve Number, CN_{CE} :

$$CN_{CE} = CN + \left(\frac{P_{imp}}{100}\right)(98 - CN) = 85 + \left(\frac{28.6}{100}\right)(98 - 85) = 88.7$$

Proposed Composite Curve Number, CN_{CP} :

$$CN_{CP} = 85 + \left(\frac{42.8}{100}\right)(98 - 85) = 90.6$$

Rainfall Depth (NOAA Atlas 14 – See Appendix B)

2-Year, 24-Hour Rainfall Depth, $P_2 = 2.65$ inches

Time of Concentration (NRCS TR-55)

The existing Time of Concentration, T_{CE} is composed of several segments and flow conditions (see Figure 1 for map):

Segment 1: $L = 300'$; $s = \pm 6.33\%$; Overland flow condition through heavy vegetation; $n = 0.80$ (TR-55 Table 3-1)

Using TR-55 Equation 3-3:

$$T_{CE1} = \frac{0.007(nL)^{0.8}}{(P_2)^{0.5}s^{0.4}} = \frac{0.007(0.80 \times 300)^{0.8}}{(2.65)^{0.5}0.0633^{0.4}} = 1.04 \text{ hr.} = 62.40 \text{ min.}$$

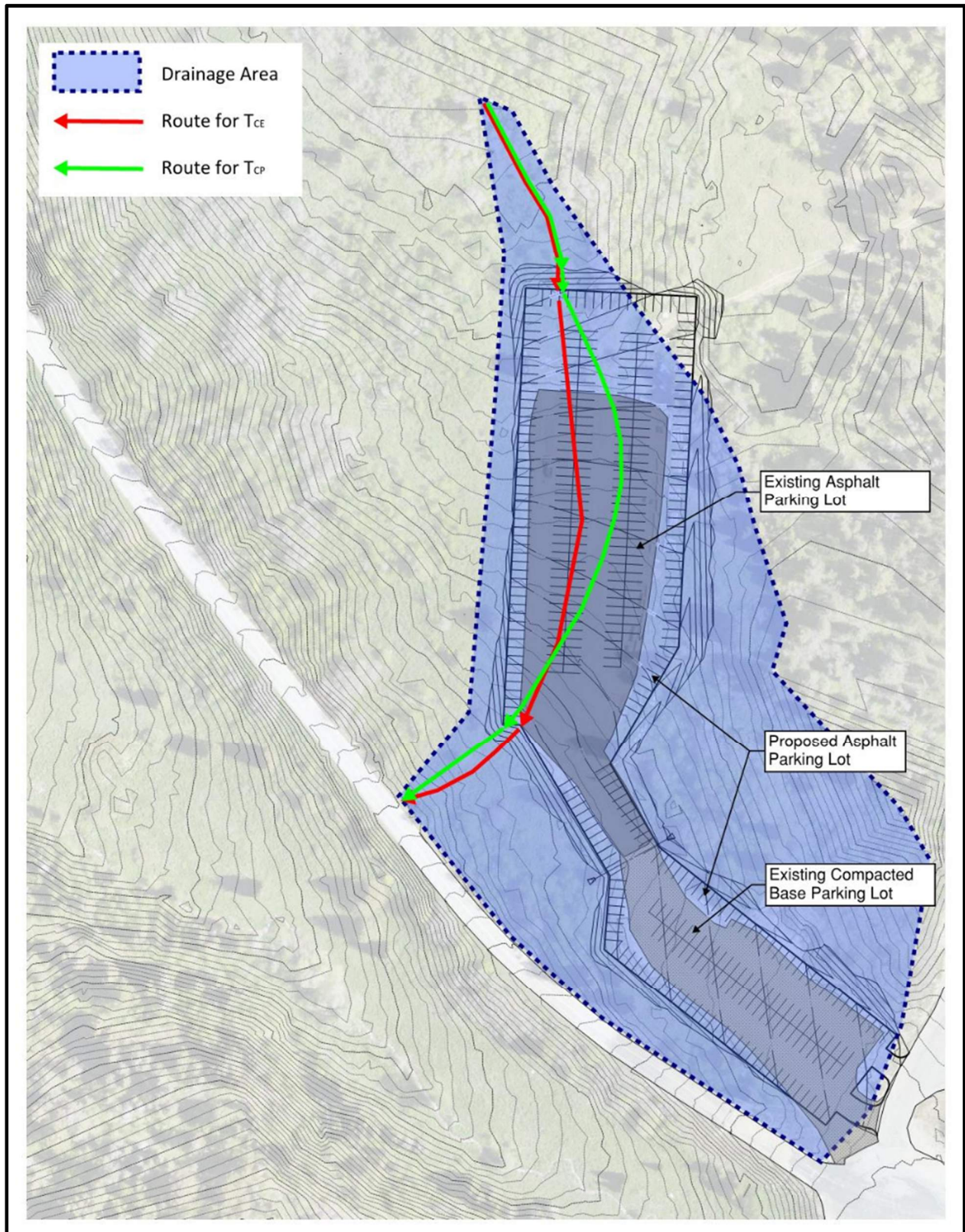


Figure 1 – Time of Concentration Map

Segment 2: L = 375'; s = ±5.9%; Shallow concentrated flow over pavement; V = 5 fps
(TR-55 Fig. 3-1)

Using TR-55 Equation 3-1:

$$T_{CE2} = \frac{L}{3600V} = \frac{375}{(3600 \times 5)} = 0.0208 \text{ hr.} = 1.25 \text{ min.}$$

Segment 3: L = 140'; s = ±14%; Shallow concentrated flow through dense vegetation; V = 6 fps
(TR-55 Fig. 3-1)

Using TR-55 Equation 3-1:

$$T_{CE3} = \frac{L}{3600V} = \frac{140}{(3600 \times 6)} = 0.0065 \text{ hr.} = 0.39 \text{ min.}$$

Total existing Time of Conc., $T_{CE} = T_{CE1} + T_{CE2} + T_{CE3} = 62.40 \text{ min.} + 1.25 \text{ min.} + 0.39 \text{ min.} = 64.04 \text{ min.}$
→ **USE $T_{CE} = 60 \text{ min.}$**

The proposed Time of Concentration, T_{CP} is composed of several segments and flow conditions:

Segment 1: L = 200'; s = ±8.00%; Overland flow condition through heavy vegetation; n = 0.80
(TR-55 Table 3-1)

Using TR-55 Equation 3-3:

$$T_{CP1} = \frac{0.007(nL)^{0.8}}{(P_2)^{0.5} s^{0.4}} = \frac{0.007(0.80 \times 200)^{0.8}}{(2.65)^{0.5} 0.08^{0.4}} = 0.68 \text{ hr.} = 41.08 \text{ min.}$$

Segment 2: L = 490'; s = ±4.3%; Shallow concentrated flow over pavement; V = 4.2 fps
(TR-55 Fig. 3-1)

Using TR-55 Equation 3-1:

$$T_{CP2} = \frac{L}{3600V} = \frac{490}{(3600 \times 4.2)} = 0.0324 \text{ hr.} = 1.94 \text{ min.}$$

Segment 3: L = 140'; s = ±18%; Shallow concentrated flow through dense vegetation; V = 7 fps
(TR-55 Fig. 3-1)

Using TR-55 Equation 3-1:

$$T_{CP3} = \frac{L}{3600V} = \frac{140}{(3600 \times 7)} = 0.0056 \text{ hr.} = 0.33 \text{ min.}$$

Total proposed Time of Conc., $T_{CP} = 41.08 \text{ min.} + 1.94 \text{ min.} + 0.33 \text{ min.} = 43.35 \text{ min.}$
→ **USE $T_{CP} = 45 \text{ min}$**

Pond Routing and Detention Approach

Weber County standards require detention of a 100-year storm event. Concerns were raised by the reviewing engineer, Braden Felix, that smaller, more common storms will flow through an orifice sized to detain only the 100-year event. Though not an explicit requirement, the original outfall structure design was modified to slow outfall from a 10-year storm event and to fully detain a 100-year event with outfall limited to the Pre-Project Peak Flow Rate (see next section).

Pre- and Post-Project Runoff Calculations

The Pre-Project and Post-Project peak flow rates (runoff) for were calculated for both the 10-year and 100-year storm events using PondPack software. These flows represent the unimpeded runoff and are required to estimate the required detention-storage and to validate the resulting pond design. The PondPack reports for both calculations are attached as Appendix C (10-year) and Appendix D (100-year).

10-Year Pre-Project Peak Flow = 8.76 cfs

10-Year Post-Project Peak Flow = 11.80 cfs

100-Year Pre-Project Peak Flow = 13.93 cfs

100-Year Post-Project Peak Flow = 18.37 cfs

Detention-Storage Estimate

The required detention-storage for a 100-year storm event was calculated using PondPack software. Outfall was limited to the calculated Pre-Project Peak Flow. The estimate generated was used to layout the detention pond design.

Estimated required Detention-Storage Volume (100-year storm) = 0.410 ac-ft.

Detention-Storage Routing and Orifice Sizing Calculations

PondPack software was used to locate and size a combination of outfall control devices to slow outfall from a 10-year storm event and to fully detain a 100-year event with outfall limited to the Pre-Project Peak Flow Rate. The resulting design includes a small (9" Ø) opening into the outfall structure at the pond bottom elevation and two larger (12" Ø) openings into the structure located 1' above the pond bottom. The smaller opening will begin releasing runoff that has traveled through the pond immediately while limiting the release rate as runoff increases, thus detaining the majority of a 10-year storm event. The pair of larger openings will begin releasing runoff as runoff continues to increase (larger storm event) and are sized, with the smaller opening, to detain a 100-year storm event per County requirements.

The actual detention pond layout was then used, with the structure and orifice design, to validate the detention-storage design (routing). The PondPack report for these calculations is included as Appendix E (10-year) and Appendix F (100-year).

Post-Project Peak Flow In (100-year storm) = 18.37 cfs

Post-Project Peak Flow Out (100-year storm) = 13.37 cfs (<13.93 cfs)

Freeboard = 1.0' (Design)

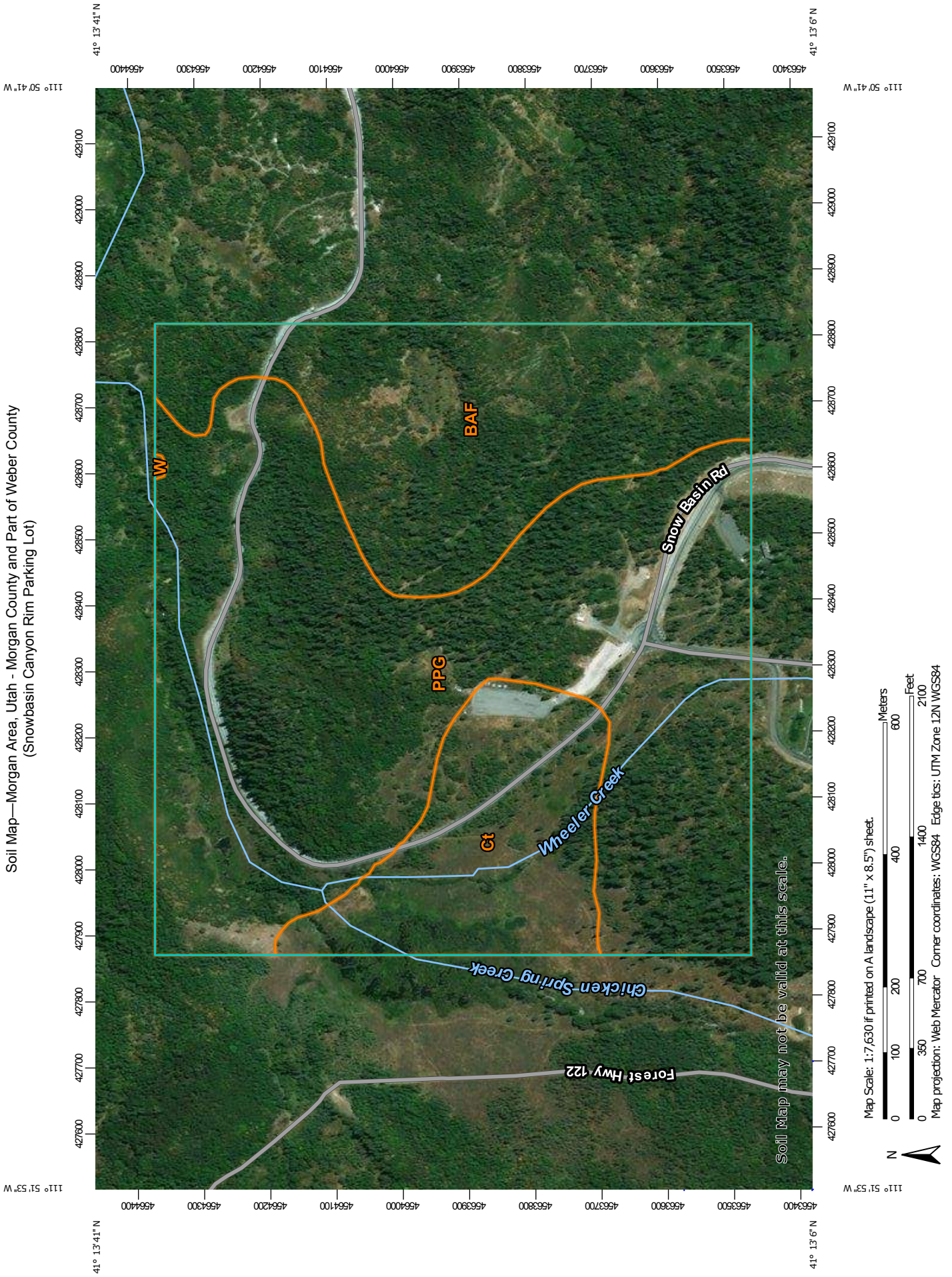
Freeboard = 1.05' (Actual at Peak)

Detention Pond Volume (Required at Peak) = 0.512 AC-ft

Detention Pond Volume (Actual with 1' Freeboard) = 0.521 AC-ft

Detention Pond Volume (Actual at Top of Berm) = 0.737 AC-ft

APPENDIX A - SOIL MAP AND HYDROLOGIC SOIL GROUPS



Soil Map—Morgan Area, Utah - Morgan County and Part of Weber County
(Snowbasin Canyon Rim Parking Lot)

Soil Map may not be valid at this scale.

Map Scale: 1:7,630 if printed on A landscape (11" x 8.5") sheet.

Map projection: Web Mercator Corner coordinates: WGS84 Edge tics: UTM Zone 12N WGS84

MAP LEGEND

MAP INFORMATION

- Area of Interest (AOI)**
 - Area of Interest (AOI)
- Soils**
 - Soil Map Unit Polygons
 - Soil Map Unit Lines
 - Soil Map Unit Points
- Special Point Features**
 - Blowout
 - Borrow Pit
 - Clay Spot
 - Closed Depression
 - Gravel Pit
 - Gravelly Spot
 - Landfill
 - Lava Flow
 - Marsh or swamp
 - Mine or Quarry
 - Miscellaneous Water
 - Perennial Water
 - Rock Outcrop
 - Saline Spot
 - Sandy Spot
 - Severely Eroded Spot
 - Sinkhole
 - Slide or Slip
 - Sodic Spot

- Spoil Area
- Stony Spot
- Very Stony Spot
- Wet Spot
- Other
- Special Line Features
- Water Features**
 - Streams and Canals
- Transportation**
 - Rails
 - Interstate Highways
 - US Routes
 - Major Roads
 - Local Roads
- Background**
 - Aerial Photography

The soil surveys that comprise your AOI were mapped at 1:24,000.

Warning: Soil Map may not be valid at this scale.
Enlargement of maps beyond the scale of mapping can cause misunderstanding of the detail of mapping and accuracy of soil line placement. The maps do not show the small areas of contrasting soils that could have been shown at a more detailed scale.

Please rely on the bar scale on each map sheet for map measurements.

Source of Map: Natural Resources Conservation Service
Web Soil Survey URL:
Coordinate System: Web Mercator (EPSG:3857)

Maps from the Web Soil Survey are based on the Web Mercator projection, which preserves direction and shape but distorts distance and area. A projection that preserves area, such as the Albers equal-area conic projection, should be used if more accurate calculations of distance or area are required.

This product is generated from the USDA-NRCS certified data as of the version date(s) listed below.

Soil Survey Area: Morgan Area, Utah - Morgan County and Part of Weber County
Survey Area Data: Version 9, Sep 9, 2016

Soil map units are labeled (as space allows) for map scales 1:50,000 or larger.

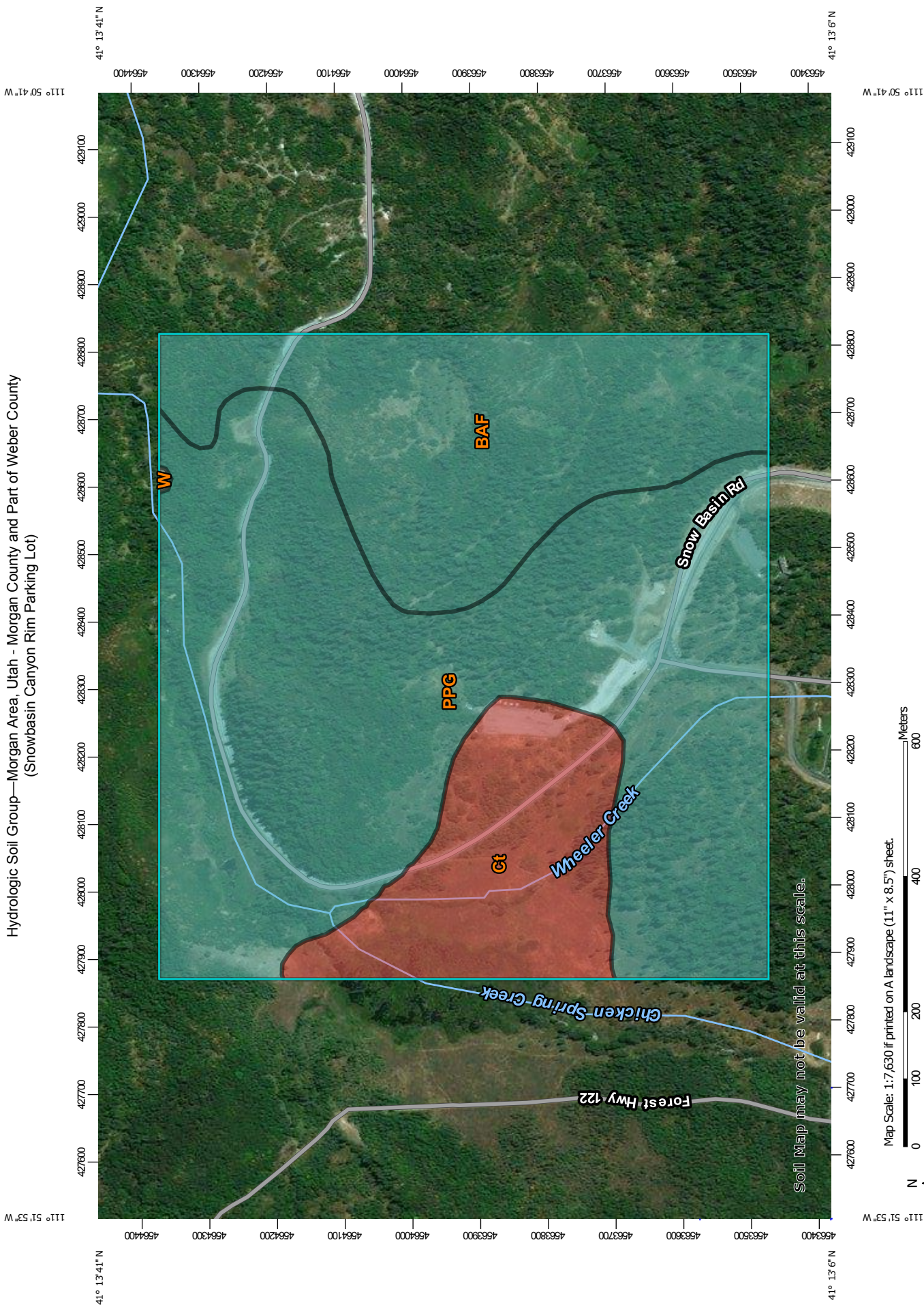
Date(s) aerial images were photographed: May 22, 2005—Nov 13, 2016

The orthophoto or other base map on which the soil lines were compiled and digitized probably differs from the background imagery displayed on these maps. As a result, some minor shifting of map unit boundaries may be evident.

Map Unit Legend

Morgan Area, Utah - Morgan County and Part of Weber County (UT609)			
Map Unit Symbol	Map Unit Name	Acres in AOI	Percent of AOI
BAF	Bertag silt loam, 10 to 30 percent slopes	54.5	25.5%
Ct	Crooked Creek silty clay loam	31.2	14.6%
PPG	Poleline-Patio association, very steep	127.9	59.8%
W	Water	0.1	0.1%
Totals for Area of Interest		213.6	100.0%

APPENDIX A - SOIL MAP AND HYDROLOGIC SOIL GROUPS



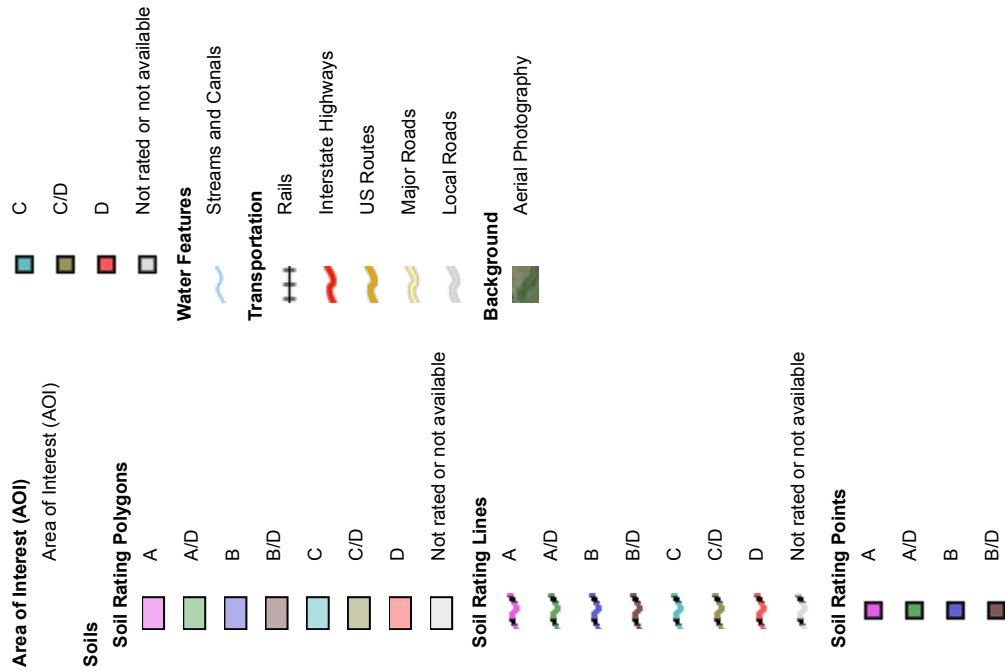
Hydrologic Soil Group—Morgan Area, Utah - Morgan County and Part of Weber County (Snowbasin Canyon Rim Parking Lot)



Natural Resources Conservation Service

Web Soil Survey National Cooperative Soil Survey

MAP LEGEND



MAP INFORMATION

The soil surveys that comprise your AOI were mapped at 1:24,000.

Warning: Soil Map may not be valid at this scale.

Enlargement of maps beyond the scale of mapping can cause misunderstanding of the detail of mapping and accuracy of soil line placement. The maps do not show the small areas of contrasting soils that could have been shown at a more detailed scale.

Please rely on the bar scale on each map sheet for map measurements.

Source of Map: Natural Resources Conservation Service
Web Soil Survey URL:
Coordinate System: Web Mercator (EPSG:3857)

Maps from the Web Soil Survey are based on the Web Mercator projection, which preserves direction and shape but distorts distance and area. A projection that preserves area, such as the Albers equal-area conic projection, should be used if more accurate calculations of distance or area are required.

This product is generated from the USDA-NRCS certified data as of the version date(s) listed below.

Soil Survey Area: Morgan Area, Utah - Morgan County and Part of Weber County
Survey Area Data: Version 9, Sep 9, 2016

Soil map units are labeled (as space allows) for map scales 1:50,000 or larger.

Date(s) aerial images were photographed: May 22, 2005—Nov 13, 2016

The orthophoto or other base map on which the soil lines were compiled and digitized probably differs from the background imagery displayed on these maps. As a result, some minor shifting of map unit boundaries may be evident.

APPENDIX A - SOIL MAP AND HYDROLOGIC SOIL GROUPS

Hydrologic Soil Group

Hydrologic Soil Group— Summary by Map Unit — Morgan Area, Utah - Morgan County and Part of Weber County (UT609)				
Map unit symbol	Map unit name	Rating	Acres in AOI	Percent of AOI
BAF	Bertag silt loam, 10 to 30 percent slopes	C	54.5	25.5%
Ct	Crooked Creek silty clay loam	D	31.2	14.6%
PPG	Poleline-Patio association, very steep	C	127.9	59.8%
W	Water		0.1	0.1%
Totals for Area of Interest			213.6	100.0%

Description

Hydrologic soil groups are based on estimates of runoff potential. Soils are assigned to one of four groups according to the rate of water infiltration when the soils are not protected by vegetation, are thoroughly wet, and receive precipitation from long-duration storms.

The soils in the United States are assigned to four groups (A, B, C, and D) and three dual classes (A/D, B/D, and C/D). The groups are defined as follows:

Group A. Soils having a high infiltration rate (low runoff potential) when thoroughly wet. These consist mainly of deep, well drained to excessively drained sands or gravelly sands. These soils have a high rate of water transmission.

Group B. Soils having a moderate infiltration rate when thoroughly wet. These consist chiefly of moderately deep or deep, moderately well drained or well drained soils that have moderately fine texture to moderately coarse texture. These soils have a moderate rate of water transmission.

Group C. Soils having a slow infiltration rate when thoroughly wet. These consist chiefly of soils having a layer that impedes the downward movement of water or soils of moderately fine texture or fine texture. These soils have a slow rate of water transmission.

Group D. Soils having a very slow infiltration rate (high runoff potential) when thoroughly wet. These consist chiefly of clays that have a high shrink-swell potential, soils that have a high water table, soils that have a claypan or clay layer at or near the surface, and soils that are shallow over nearly impervious material. These soils have a very slow rate of water transmission.

If a soil is assigned to a dual hydrologic group (A/D, B/D, or C/D), the first letter is for drained areas and the second is for undrained areas. Only the soils that in their natural condition are in group D are assigned to dual classes.

Rating Options

Aggregation Method: Dominant Condition

Component Percent Cutoff: None Specified

Tie-break Rule: Higher

APPENDIX B - RAINFALL DATA

NOAA Atlas 14, Volume 1, Version 5
 Location name: Huntsville, Utah, USA*
 Latitude: 41.2229°, Longitude: -111.8548°
 Elevation: 6321.88 ft**



* source: ESRI Maps
 ** source: USGS

POINT PRECIPITATION FREQUENCY ESTIMATES

Sanja Perica, Sarah Dietz, Sarah Heim, Lillian Hiner, Kazungu Maitaria, Deborah Martin, Sandra Pavlovic, Ishani Roy, Carl Trypaluk, Dale Unruh, Fenglin Yan, Michael Yekta, Tan Zhao, Geoffrey Bonnin, Daniel Brewer, Li-Chuan Chen, Tye Parzybok, John Yarchoan

NOAA, National Weather Service, Silver Spring, Maryland

[PF_tabular](#) | [PF_graphical](#) | [Maps_&_aerials](#)

PF tabular

PDS-based point precipitation frequency estimates with 90% confidence intervals (in inches) ¹										
Duration	Average recurrence interval (years)									
	1	2	5	10	25	50	100	200	500	1000
5-min	0.179 (0.156-0.206)	0.225 (0.200-0.260)	0.304 (0.266-0.349)	0.375 (0.326-0.431)	0.487 (0.414-0.564)	0.590 (0.487-0.691)	0.711 (0.570-0.845)	0.856 (0.660-1.04)	1.09 (0.794-1.37)	1.32 (0.910-1.71)
10-min	0.271 (0.238-0.313)	0.343 (0.304-0.396)	0.463 (0.406-0.532)	0.571 (0.496-0.656)	0.741 (0.630-0.859)	0.898 (0.742-1.05)	1.08 (0.867-1.29)	1.30 (1.00-1.58)	1.67 (1.21-2.09)	2.01 (1.39-2.60)
15-min	0.337 (0.295-0.388)	0.425 (0.376-0.491)	0.574 (0.503-0.659)	0.707 (0.615-0.814)	0.919 (0.781-1.07)	1.11 (0.919-1.31)	1.34 (1.07-1.59)	1.62 (1.25-1.96)	2.06 (1.50-2.59)	2.49 (1.72-3.22)
30-min	0.453 (0.397-0.523)	0.573 (0.507-0.661)	0.773 (0.677-0.888)	0.953 (0.827-1.10)	1.24 (1.05-1.43)	1.50 (1.24-1.76)	1.81 (1.45-2.15)	2.17 (1.68-2.64)	2.78 (2.02-3.49)	3.36 (2.31-4.33)
60-min	0.561 (0.492-0.647)	0.709 (0.627-0.818)	0.957 (0.838-1.10)	1.18 (1.02-1.36)	1.53 (1.30-1.78)	1.86 (1.53-2.17)	2.24 (1.79-2.66)	2.69 (2.08-3.27)	3.44 (2.50-4.32)	4.15 (2.86-5.36)
2-hr	0.745 (0.662-0.845)	0.932 (0.830-1.06)	1.20 (1.06-1.36)	1.44 (1.26-1.64)	1.85 (1.58-2.12)	2.21 (1.86-2.57)	2.65 (2.16-3.12)	3.16 (2.48-3.81)	4.00 (2.95-4.97)	4.78 (3.37-6.10)
3-hr	0.862 (0.777-0.962)	1.06 (0.961-1.19)	1.32 (1.18-1.47)	1.56 (1.38-1.75)	1.94 (1.69-2.20)	2.31 (1.97-2.63)	2.74 (2.29-3.18)	3.25 (2.63-3.84)	4.09 (3.15-4.98)	4.86 (3.60-6.16)
6-hr	1.22 (1.12-1.33)	1.48 (1.36-1.63)	1.77 (1.62-1.95)	2.04 (1.84-2.25)	2.44 (2.18-2.71)	2.78 (2.45-3.11)	3.16 (2.75-3.59)	3.58 (3.05-4.13)	4.44 (3.66-5.23)	5.22 (4.18-6.29)
12-hr	1.62 (1.48-1.78)	1.98 (1.81-2.18)	2.37 (2.16-2.62)	2.73 (2.46-3.02)	3.26 (2.91-3.64)	3.71 (3.26-4.17)	4.18 (3.62-4.76)	4.69 (3.98-5.41)	5.46 (4.51-6.45)	6.09 (4.89-7.33)
24-hr	2.16 (1.99-2.35)	2.65 (2.44-2.89)	3.18 (2.92-3.47)	3.62 (3.32-3.95)	4.23 (3.87-4.62)	4.71 (4.28-5.14)	5.20 (4.71-5.69)	5.71 (5.13-6.24)	6.39 (5.70-7.01)	6.93 (6.12-7.63)
2-day	2.65 (2.44-2.88)	3.26 (3.00-3.56)	3.92 (3.61-4.29)	4.48 (4.11-4.89)	5.25 (4.80-5.74)	5.86 (5.32-6.41)	6.49 (5.87-7.11)	7.13 (6.40-7.84)	8.01 (7.11-8.85)	8.70 (7.66-9.65)
3-day	2.99 (2.75-3.25)	3.68 (3.39-4.01)	4.46 (4.10-4.86)	5.11 (4.69-5.57)	6.02 (5.49-6.56)	6.74 (6.11-7.36)	7.48 (6.75-8.19)	8.26 (7.40-9.06)	9.32 (8.26-10.3)	10.2 (8.91-11.2)
4-day	3.32 (3.06-3.62)	4.10 (3.78-4.47)	4.99 (4.59-5.44)	5.74 (5.26-6.26)	6.78 (6.18-7.39)	7.61 (6.90-8.31)	8.48 (7.64-9.28)	9.39 (8.39-10.3)	10.6 (9.40-11.7)	11.6 (10.2-12.8)
7-day	4.21 (3.86-4.60)	5.20 (4.77-5.69)	6.32 (5.78-6.93)	7.26 (6.63-7.97)	8.56 (7.78-9.40)	9.59 (8.68-10.6)	10.7 (9.60-11.8)	11.8 (10.5-13.1)	13.3 (11.8-14.9)	14.6 (12.7-16.3)
10-day	4.89 (4.50-5.33)	6.04 (5.55-6.58)	7.27 (6.68-7.93)	8.28 (7.59-9.03)	9.63 (8.79-10.5)	10.7 (9.69-11.7)	11.7 (10.6-12.8)	12.8 (11.5-14.0)	14.2 (12.7-15.7)	15.3 (13.5-17.0)
20-day	6.64 (6.13-7.18)	8.19 (7.56-8.87)	9.75 (8.99-10.6)	11.0 (10.1-11.9)	12.6 (11.5-13.6)	13.7 (12.6-14.9)	14.9 (13.6-16.2)	16.0 (14.5-17.5)	17.5 (15.8-19.2)	18.6 (16.7-20.5)
30-day	8.25 (7.66-8.92)	10.2 (9.42-11.0)	12.0 (11.1-13.1)	13.5 (12.5-14.7)	15.4 (14.2-16.8)	16.9 (15.5-18.3)	18.3 (16.7-19.9)	19.6 (17.9-21.4)	21.4 (19.3-23.5)	22.7 (20.4-25.0)
45-day	10.4 (9.67-11.3)	12.8 (11.9-13.9)	15.2 (14.0-16.4)	17.1 (15.7-18.5)	19.5 (17.9-21.2)	21.4 (19.5-23.3)	23.2 (21.2-25.4)	25.1 (22.7-27.5)	27.6 (24.7-30.3)	29.5 (26.2-32.6)
60-day	12.4 (11.5-13.4)	15.3 (14.1-16.5)	18.0 (16.7-19.5)	20.2 (18.7-21.8)	23.0 (21.2-24.9)	25.0 (23.0-27.2)	27.1 (24.8-29.4)	29.1 (26.4-31.7)	31.6 (28.6-34.6)	33.6 (30.1-36.9)

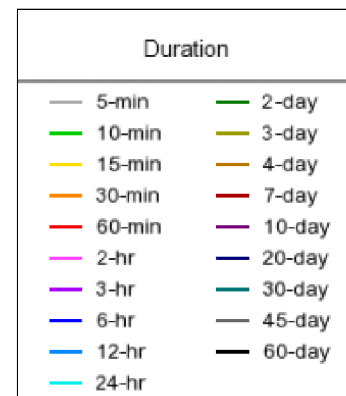
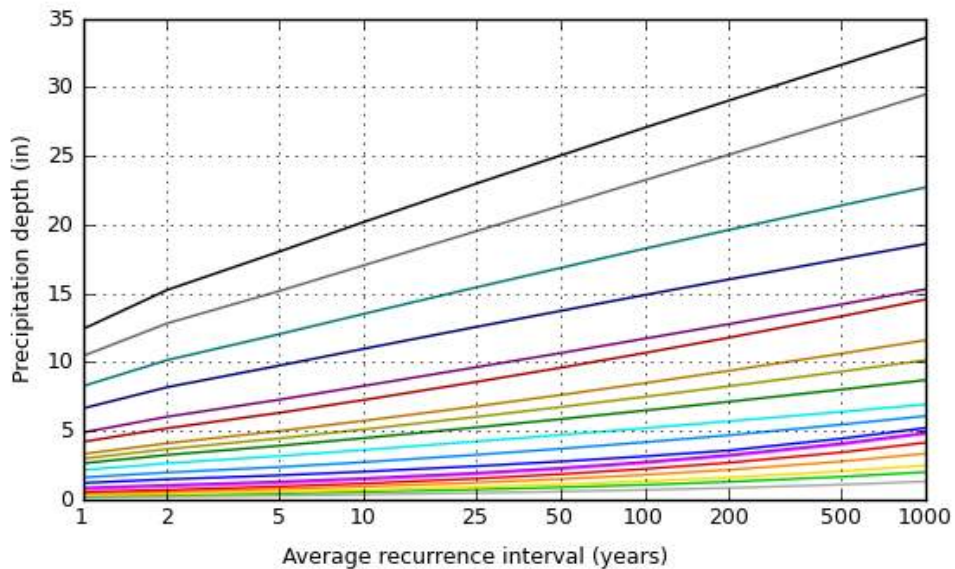
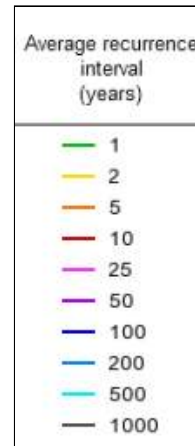
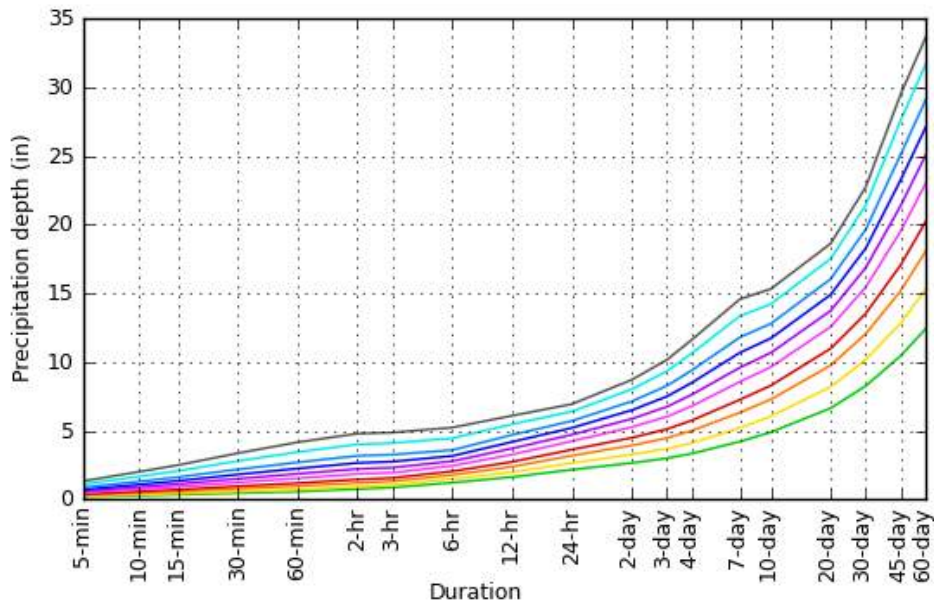
¹ Precipitation frequency (PF) estimates in this table are based on frequency analysis of partial duration series (PDS). Numbers in parenthesis are PF estimates at lower and upper bounds of the 90% confidence interval. The probability that precipitation frequency estimates (for a given duration and average recurrence interval) will be greater than the upper bound (or less than the lower bound) is 5%. Estimates at upper bounds are not checked against probable maximum precipitation (PMP) estimates and may be higher than currently valid PMP values. Please refer to NOAA Atlas 14 document for more information.

[Back to Top](#)

PF graphical

PDS-based depth-duration-frequency (DDF) curves

Latitude: 41.2229°, Longitude: -111.8548°

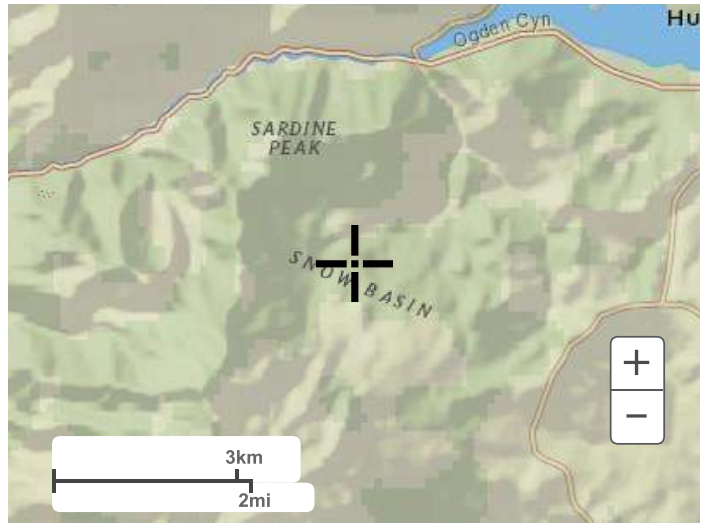


[Back to Top](#)

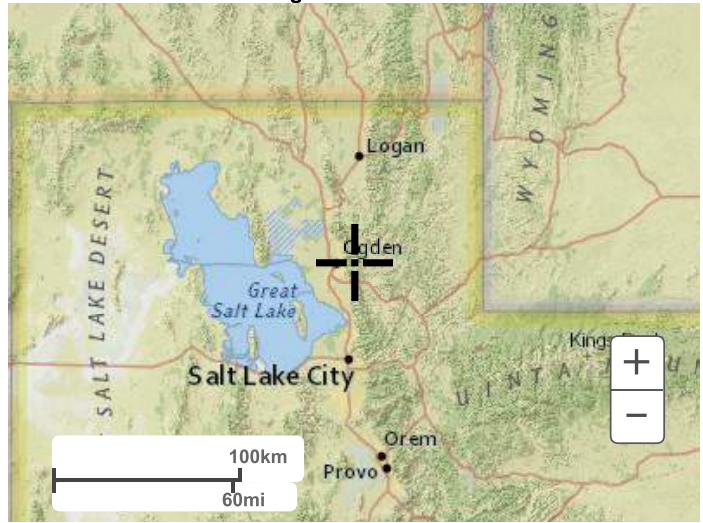
Maps & aerials

Small scale terrain

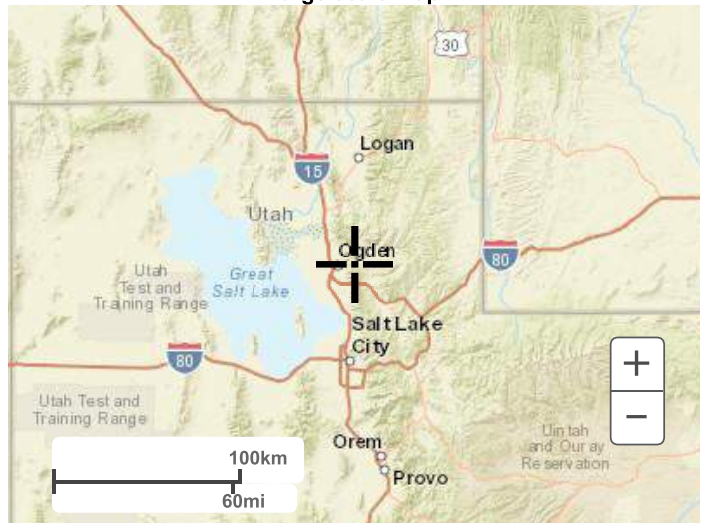
APPENDIX B - RAINFALL DATA



Large scale terrain

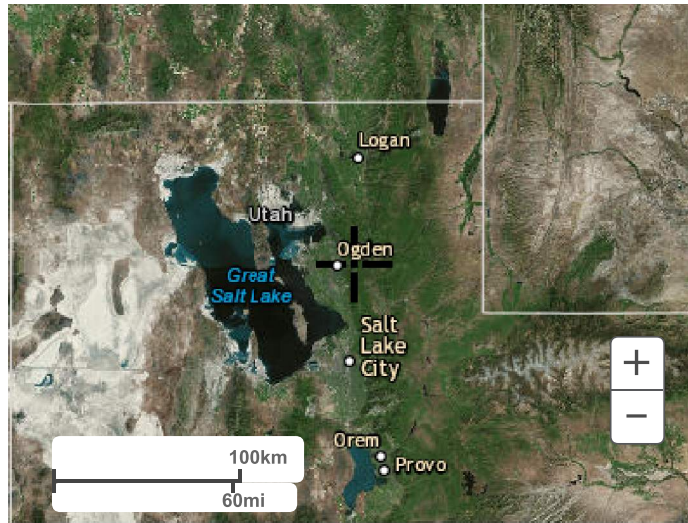


Large scale map



Large scale aerial

APPENDIX B - RAINFALL DATA



[Back to Top](#)

[US Department of Commerce](#)
[National Oceanic and Atmospheric Administration](#)
[National Weather Service](#)
[National Water Center](#)
1325 East West Highway
Silver Spring, MD 20910
Questions?: HDSC.Questions@noaa.gov

[Disclaimer](#)

Catchment Detailed Report: Pre

<General>			
ID	21	Notes	
Label	Pre	Hyperlinks	<Collection: 0 items>
GIS-IDs			
GIS-ID			
Geometry			
	X (ft)		Y (ft)
	-184.62		52.33
	-177.33		73.72
	-195.41		87.26
	-213.89		74.25
	-207.22		52.66
Active Topology			
Is Active?	True		
Catchment			
Outflow Node	O-1		
Rainfall			
Use Local Rainfall?	False		
Runoff			
Runoff Method	Unit Hydrograph	SCS CN	88.700
Loss Method	SCS CN	Unit Hydrograph Method	SCS Unit Hydrograph
Use Scaled Area?	False	Tc Input Type	User Defined Tc
Area (User Defined)	6.790 acres	Time of Concentration	1.000 hours
CN Input Type	Simple CN	Time of Concentration (Composite)	1.000 hours
Unit Hydrograph (Advanced)			
SCS Unit Hydrograph Method	Default Curvilinear	Use Directly Connected Impervious Area	False
Flow (Base)	0.00 ft ³ /s	Calculation Increment (Catchment)	0.000 hours
Results (Computed)			
Computational Time Increment	0.133 hours	Time to Peak (Computed)	12.533 hours

APPENDIX C - PRE- AND POST-PROJECT PEAK FLOWS
(10-YEAR)

Catchment Detailed Report: Pre

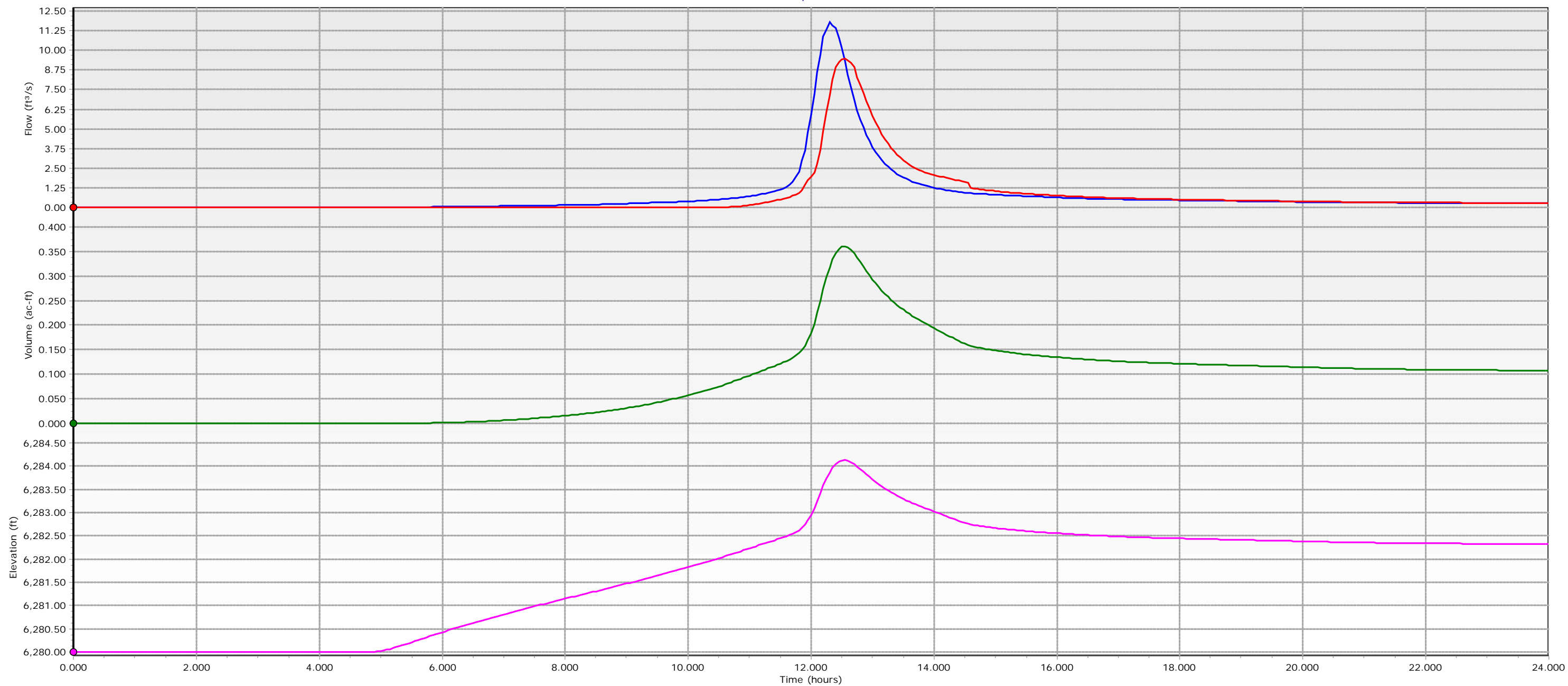
Results (Computed)			
Flow (Peak, Computed)	8.76 ft ³ /s		
Results (Interpolated)			
Flow (Peak Interpolated Output)	8.74 ft ³ /s	Time to Flow (Peak Interpolated Output)	12.500 hours
Volume	1.364 ac-ft		
Results (Modified Rational Method)			
Frequency	(N/A) years	Area (Modified Rational, Composite)	(N/A) acres
C Adjustment Factor	(N/A)	C Coefficient (Modified Rational, Weighted)	(N/A)
Flow (Modified Rational, Allowable)	(N/A) ft ³ /s	C Coefficient (Modified Rational, Adjusted)	(N/A)
Storage (Modified Rational, Estimated)	(N/A) ac-ft	Second Outflow Breakpoint (Modified Rational)	(N/A) hours
Time of Duration (Modified Rational, Critical)	(N/A) hours	First Outflow Breakpoint (Modified Rational, Method T)	(N/A) hours
Time of Concentration (Modified Rational, Composite)	(N/A) hours	Intensity (Modified Rational, Critical)	(N/A) in/h
Intensity (Modified Rational, Peak)	(N/A) in/h	Flow (Modified Rational, Critical)	(N/A) ft ³ /s
Flow (Modified Rational, Peak)	(N/A) ft ³ /s		
Results (SCS Unit Hydrograph)			
Unit Hydrograph Shape Factor	483.432	Unit peak time, T _p	0.667 hours
K Factor	0.749	Unit receding limb, T _r	2.667 hours
Receding/Rising, T _r /T _p	1.670	Total unit time, T _b	3.333 hours
Unit peak, q _p	7.69 ft ³ /s	Percent Volume under Rising Limb	37.5 %
Results			
Flow (Total)	0.00 ft ³ /s	Flow (Peak) + Flow (Base)	8.76 ft ³ /s
Cumulative Runoff Depth (Pervious)	2.4 in	Maximum Retention (Pervious)	1.3 in
Runoff Volume (Impervious)	0.000 ac-ft	Maximum Retention (Pervious, 20 percent)	0.3 in
Runoff Volume (Pervious)	1.381 ac-ft	Maximum Retention (Impervious)	(N/A) in
Cumulative Runoff Depth (Impervious)	0.0 in	Maximum Retention (Impervious, 20 percent)	(N/A) in

Calculation Messages

Time (hours)	Message
--------------	---------

APPENDIX C - PRE- AND POST-PROJECT PEAK FLOWS
(10-YEAR)

New Graph



PO-1 - 10 Year - Flow (Total In) PO-1 - 10 Year - Flow (Total Out) PO-1 - 10 Year - Volume PO-1 - 10 Year - Elevation

Catchment Detailed Report: Post

<General>			
ID	26	Notes	
Label	Post	Hyperlinks	<Collection: 0 items>
GIS-IDs			
GIS-ID			
Geometry			
	X (ft)		Y (ft)
	-76.16		-18.56
	-67.87		3.28
	-86.08		17.91
	-105.62		5.12
	-99.49		-17.42
Active Topology			
Is Active?	True		
Catchment			
Outflow Node	PO-1		
Rainfall			
Use Local Rainfall?	False		
Runoff			
Runoff Method	Unit Hydrograph	SCS CN	90.600
Loss Method	SCS CN	Unit Hydrograph Method	SCS Unit Hydrograph
Use Scaled Area?	False	Tc Input Type	User Defined Tc
Area (User Defined)	6.900 acres	Time of Concentration	0.750 hours
CN Input Type	Simple CN	Time of Concentration (Composite)	0.750 hours
Unit Hydrograph (Advanced)			
SCS Unit Hydrograph Method	Default Curvilinear	Use Directly Connected Impervious Area	False
Flow (Base)	0.00 ft ³ /s	Calculation Increment (Catchment)	0.000 hours
Results (Computed)			
Computational Time Increment	0.100 hours	Time to Peak (Computed)	12.300 hours

APPENDIX D - PRE- AND POST-PROJECT PEAK FLOWS
(100-YEAR)

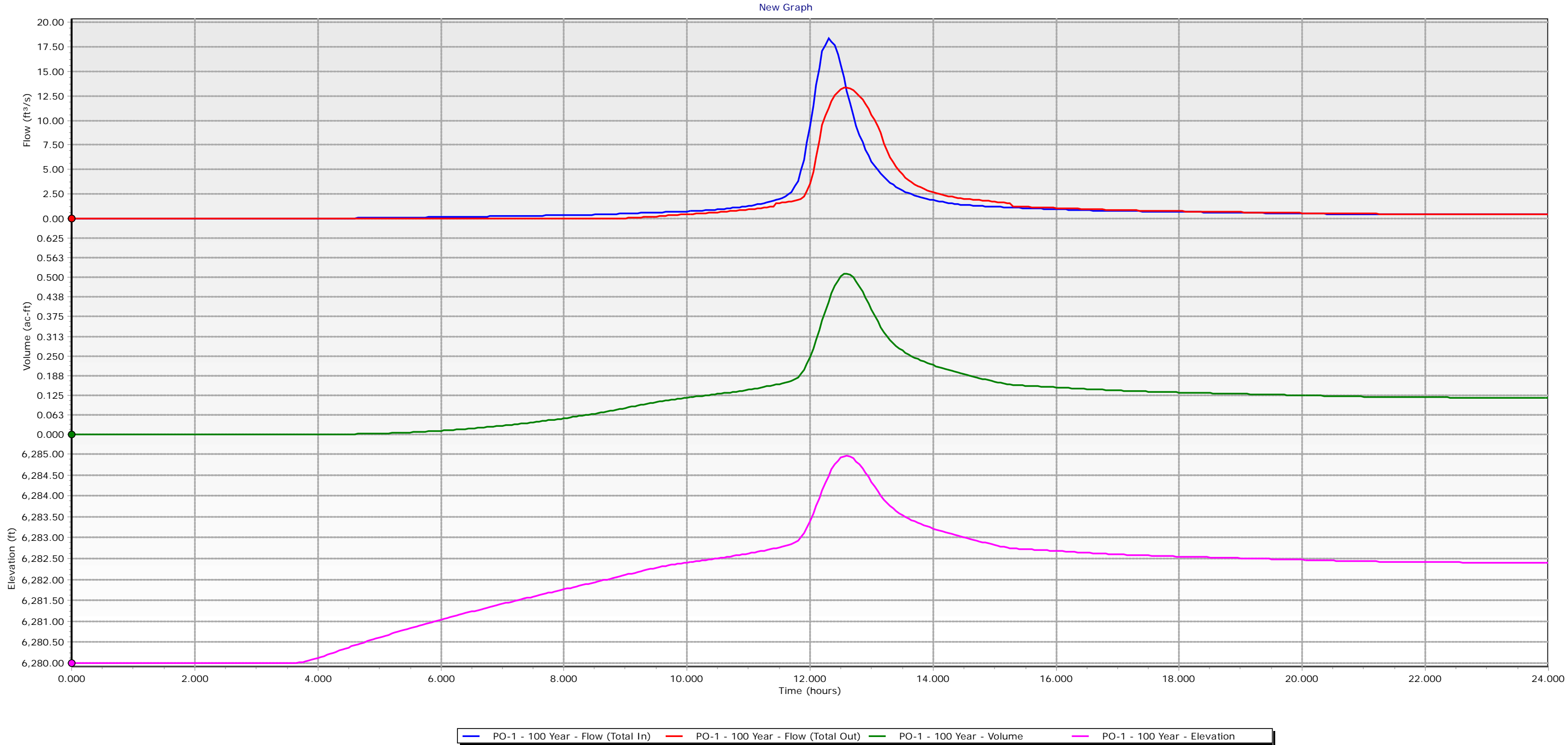
Catchment Detailed Report: Post

Results (Computed)			
Flow (Peak, Computed)	11.80 ft ³ /s		
Results (Interpolated)			
Flow (Peak Interpolated Output)	11.80 ft ³ /s	Time to Flow (Peak Interpolated Output)	12.300 hours
Volume	1.492 ac-ft		
Results (Modified Rational Method)			
Frequency	(N/A) years	Area (Modified Rational, Composite)	(N/A) acres
C Adjustment Factor	(N/A)	C Coefficient (Modified Rational, Weighted)	(N/A)
Flow (Modified Rational, Allowable)	(N/A) ft ³ /s	C Coefficient (Modified Rational, Adjusted)	(N/A)
Storage (Modified Rational, Estimated)	(N/A) ac-ft	Second Outflow Breakpoint (Modified Rational)	(N/A) hours
Time of Duration (Modified Rational, Critical)	(N/A) hours	First Outflow Breakpoint (Modified Rational, Method T)	(N/A) hours
Time of Concentration (Modified Rational, Composite)	(N/A) hours	Intensity (Modified Rational, Critical)	(N/A) in/h
Intensity (Modified Rational, Peak)	(N/A) in/h	Flow (Modified Rational, Critical)	(N/A) ft ³ /s
Flow (Modified Rational, Peak)	(N/A) ft ³ /s		
Results (SCS Unit Hydrograph)			
Unit Hydrograph Shape Factor	483.432	Unit peak time, Tp	0.500 hours
K Factor	0.749	Unit receding limb, Tr	2.000 hours
Receding/Rising, Tr/Tp	1.670	Total unit time, Tb	2.500 hours
Unit peak, qp	10.42 ft ³ /s	Percent Volume under Rising Limb	37.5 %
Results			
Flow (Total)	0.00 ft ³ /s	Flow (Peak) + Flow (Base)	11.80 ft ³ /s
Cumulative Runoff Depth (Pervious)	2.6 in	Maximum Retention (Pervious)	1.0 in
Runoff Volume (Impervious)	0.000 ac-ft	Maximum Retention (Pervious, 20 percent)	0.2 in
Runoff Volume (Pervious)	1.505 ac-ft	Maximum Retention (Impervious)	(N/A) in
Cumulative Runoff Depth (Impervious)	0.0 in	Maximum Retention (Impervious, 20 percent)	(N/A) in

Calculation Messages

Time (hours)	Message
--------------	---------

APPENDIX D - PRE- AND POST-PROJECT PEAK FLOWS
(100-YEAR)



Pond Detailed Report: Pond

<General>			
ID	27	Notes	
Label	PO-1	Hyperlinks	<Collection: 0 items>
GIS-IDs			
GIS-ID			
Geometry			
	X (ft)		Y (ft)
	-33.23		-11.31
	-29.04		2.28
	-40.67		10.46
	-52.04		1.93
	-47.45		-11.52
Active Topology			
Is Active?	True		
Infiltration			
Infiltration Method	No Infiltration		
Initial Conditions			
Is Outflow Averaging On?	False	Define Starting Water Surface Elevation	Pond Invert
Output			
Detention Time	Compute All Methods		
Runoff			
Scaled Area	0.008 acres		
Volume			
Pond Type	Elevation- Area	Use Void Space?	False

Elevation-Area

Pond Elevation (ft)	Pond Area (acres)
6,280.00	0.000
6,282.00	0.103
6,283.00	0.133
6,284.00	0.165

Pond Detailed Report: Pond

Elevation-Area

Pond Elevation (ft)	Pond Area (acres)
6,285.00	0.198
6,286.00	0.234

Results (Detention Time)

Time to Peak (Outflow + Infiltration, Peak to Peak Detention Time)	12.550 hours	Weighted Average Plug Time	1.391 hours
Time to Peak (Inflow, Peak to Peak Detention Time)	12.300 hours	Maximum Plug Volume Plug Time	0.451 hours
Detention Time (Peak to Peak)	0.250 hours	Maximum Inflow Plug Volume	0.048 ac-ft
Time to Centroid (Outflow)	14.375 hours	Time (Maximum Plug Volume, Start)	12.300 hours
Time to Centroid (Inflow)	13.685 hours	Time (Maximum Plug Volume, End)	12.350 hours
Detention Time (Centroid to Centroid)	0.690 hours		

Results (Flows)

Flow (Outlet)	0.00 ft ³ /s	Flow (Peak Total)	9.46 ft ³ /s
Flow (Total In)	0.00 ft ³ /s	Time to Peak (Total Out)	12.550 hours
Flow (Total Out)	0.00 ft ³ /s	Volume (Total Out)	1.384 ac-ft

Results (ICPM Initial Conditions)

Elevation (Starting Water Surface Computed)	(N/A) ft	Outflow (Starting)	(N/A) ft ³ /s
Volume (Starting)	(N/A) ac-ft	Infiltration (Starting ICPM)	(N/A) ft ³ /s

Results (ICPM Mass Balance)

Volume (Initial ICPM)	(N/A) ac-ft	Difference	(N/A) ac-ft
Volume (Total In ICPM)	(N/A) ac-ft	Elevation (Ending)	(N/A) ft
Volume (Total Out ICPM)	(N/A) ac-ft	Percent of Inflow Volume (Interconnected Pond Mass Balance)	(N/A) %
Volume (Ending)	(N/A) ac-ft		

Results (ICPM Maximum Storage)

Time to Maximum Storage	(N/A) hours	Volume (Maximum)	(N/A) ac-ft
Elevation (Maximum)	(N/A) ft		

Results (ICPM Routing)

Time to Peak (Pond Inflow, Forward Flow)	(N/A) hours	Pond Inflow, Total Volume In	(N/A) ac-ft
Pond Inflow, Forward Flow Peak	(N/A) ft ³ /s	Direction (Forward, Total In)	(N/A)

Pond Detailed Report: Pond

Results (ICPM Routing)			
Time to Peak (Infiltration, Forward Flow)	(N/A) hours	Pond Outflow, Total Volume In	(N/A) ac-ft
Infiltration, Forward Flow Peak	(N/A) ft ³ /s	Direction (Forward, Total Out)	(N/A)
Time to Peak (Pond Outflow, Forward Flow)	(N/A) hours	Pond Inflow, Total Volume Out	(N/A) ac-ft
Pond Outflow, Forward Flow Peak	(N/A) ft ³ /s	Direction (Reverse, Total In)	(N/A)
Time to Peak (Pond Inflow, Reverse Flow)	(N/A) hours	Pond Outflow, Total Volume Out	(N/A) ac-ft
Pond Inflow, Reverse Flow Peak	(N/A) ft ³ /s	Direction (Reverse, Total Out)	(N/A)
Time to Peak (Infiltration, Reverse Flow)	(N/A) hours	Infiltration, Total Volume Out	(N/A) ac-ft
Infiltration, Reverse Flow Peak	(N/A) ft ³ /s	Direction (Reverse, Total Infiltration Out)	(N/A)
Time to Peak (Pond Outflow, Reverse Flow)	(N/A) hours	Infiltration, Total Volume In	(N/A) ac-ft
Pond Outflow, Reverse Flow Peak	(N/A) ft ³ /s	Direction (Forward, Total Infiltration In)	(N/A)

Results (Infiltration)			
Infiltration	0.00 ft ³ /s	Infiltration Method (Computed)	No Infiltration

Results (Level Pool Initial Conditions)			
Elevation (Water Surface, Initial)	6,280.00 ft	Flow (Initial Infiltration)	0.00 ft ³ /s
Volume (Initial)	0.000 ac-ft	Flow (Initial, Total)	0.00 ft ³ /s
Flow (Initial Outlet)	0.00 ft ³ /s	Time Increment	0.050 hours

Results (Level Pool Mass Balance)			
Volume (Total Inflow)	1.492 ac-ft	Volume (Retained)	0.106 ac-ft
Volume (Total Infiltration)	0.000 ac-ft	Volume (Unrouted)	-0.001 ac-ft
Volume (Total Outlet Outflow)	1.384 ac-ft	Error (Mass Balance)	0.1 %

Results (Pond Routing)			
Flow (Peak In)	11.80 ft ³ /s	Time to Peak (Infiltration)	(N/A) hours
Time to Peak (Flow, In)	12.300 hours	Elevation (Water Surface, Peak)	6,284.13 ft
Flow (Peak Outlet)	9.46 ft ³ /s	Volume (Peak)	0.361 ac-ft
Time to Peak (Flow, Outlet)	12.550 hours	2S/t - O	0.00 ft ³ /s
Infiltration (Peak)	(N/A) ft ³ /s	2S/t + O	0.00 ft ³ /s

Elevation-Volume-Flow Table

Elevation (ft)	Outflow (ft ³ /s)	Storage (ac-ft)	Area (acres)	Infiltration (ft ³ /s)	Flow (Total) (ft ³ /s)
6,280.00	0.00	0.000	0.000	0.00	0.00
6,280.01	0.00	0.000	0.000	0.00	0.00

Pond Detailed Report: Pond

Elevation-Volume-Flow Table

Elevation (ft)	Outflow (ft ³ /s)	Storage (ac-ft)	Area (acres)	Infiltration (ft ³ /s)	Flow (Total) (ft ³ /s)
6,280.02	0.00	0.000	0.000	0.00	0.00
6,280.03	0.00	0.000	0.001	0.00	0.00
6,280.04	0.00	0.000	0.001	0.00	0.00
6,280.05	0.00	0.000	0.001	0.00	0.00
6,280.06	0.00	0.000	0.001	0.00	0.00
6,280.07	0.00	0.000	0.001	0.00	0.00
6,280.08	0.00	0.000	0.001	0.00	0.00
6,280.09	0.00	0.000	0.001	0.00	0.00
6,280.10	0.00	0.000	0.001	0.00	0.00
6,280.11	0.00	0.000	0.001	0.00	0.00
6,280.12	0.00	0.000	0.001	0.00	0.00
6,280.13	0.00	0.000	0.002	0.00	0.00
6,280.14	0.00	0.000	0.002	0.00	0.00
6,280.15	0.00	0.000	0.002	0.00	0.00
6,280.16	0.00	0.000	0.002	0.00	0.00
6,280.17	0.00	0.000	0.002	0.00	0.00
6,280.18	0.00	0.000	0.002	0.00	0.00
6,280.19	0.00	0.000	0.002	0.00	0.00
6,280.20	0.00	0.000	0.002	0.00	0.00
6,280.21	0.00	0.000	0.003	0.00	0.00
6,280.22	0.00	0.000	0.003	0.00	0.00
6,280.23	0.00	0.000	0.003	0.00	0.00
6,280.24	0.00	0.000	0.003	0.00	0.00
6,280.25	0.00	0.000	0.003	0.00	0.00
6,280.26	0.00	0.000	0.003	0.00	0.00
6,280.27	0.00	0.000	0.004	0.00	0.00
6,280.28	0.00	0.000	0.004	0.00	0.00
6,280.29	0.00	0.001	0.004	0.00	0.00
6,280.30	0.00	0.001	0.004	0.00	0.00
6,280.31	0.00	0.001	0.004	0.00	0.00
6,280.32	0.00	0.001	0.005	0.00	0.00
6,280.33	0.00	0.001	0.005	0.00	0.00
6,280.34	0.00	0.001	0.005	0.00	0.00
6,280.35	0.00	0.001	0.005	0.00	0.00
6,280.36	0.00	0.001	0.005	0.00	0.00
6,280.37	0.00	0.001	0.006	0.00	0.00
6,280.38	0.00	0.001	0.006	0.00	0.00
6,280.39	0.00	0.001	0.006	0.00	0.00
6,280.40	0.00	0.001	0.006	0.00	0.00
6,280.41	0.00	0.001	0.007	0.00	0.00
6,280.42	0.00	0.001	0.007	0.00	0.00
6,280.43	0.00	0.001	0.007	0.00	0.00
6,280.44	0.00	0.001	0.007	0.00	0.00
6,280.45	0.00	0.001	0.008	0.00	0.00

Pond Detailed Report: Pond

Elevation-Volume-Flow Table

Elevation (ft)	Outflow (ft ³ /s)	Storage (ac-ft)	Area (acres)	Infiltration (ft ³ /s)	Flow (Total) (ft ³ /s)
6,280.46	0.00	0.002	0.008	0.00	0.00
6,280.47	0.00	0.002	0.008	0.00	0.00
6,280.48	0.00	0.002	0.008	0.00	0.00
6,280.49	0.00	0.002	0.009	0.00	0.00
6,280.50	0.00	0.002	0.009	0.00	0.00
6,280.51	0.00	0.002	0.009	0.00	0.00
6,280.52	0.00	0.002	0.010	0.00	0.00
6,280.53	0.00	0.002	0.010	0.00	0.00
6,280.54	0.00	0.002	0.010	0.00	0.00
6,280.55	0.00	0.002	0.010	0.00	0.00
6,280.56	0.00	0.002	0.011	0.00	0.00
6,280.57	0.00	0.003	0.011	0.00	0.00
6,280.58	0.00	0.003	0.011	0.00	0.00
6,280.59	0.00	0.003	0.012	0.00	0.00
6,280.60	0.00	0.003	0.012	0.00	0.00
6,280.61	0.00	0.003	0.012	0.00	0.00
6,280.62	0.00	0.003	0.013	0.00	0.00
6,280.63	0.00	0.003	0.013	0.00	0.00
6,280.64	0.00	0.003	0.013	0.00	0.00
6,280.65	0.00	0.004	0.014	0.00	0.00
6,280.66	0.00	0.004	0.014	0.00	0.00
6,280.67	0.00	0.004	0.014	0.00	0.00
6,280.68	0.00	0.004	0.015	0.00	0.00
6,280.69	0.00	0.004	0.015	0.00	0.00
6,280.70	0.00	0.004	0.016	0.00	0.00
6,280.71	0.00	0.004	0.016	0.00	0.00
6,280.72	0.00	0.005	0.016	0.00	0.00
6,280.73	0.00	0.005	0.017	0.00	0.00
6,280.74	0.00	0.005	0.017	0.00	0.00
6,280.75	0.00	0.005	0.017	0.00	0.00
6,280.76	0.00	0.005	0.018	0.00	0.00
6,280.77	0.00	0.005	0.018	0.00	0.00
6,280.78	0.00	0.006	0.019	0.00	0.00
6,280.79	0.00	0.006	0.019	0.00	0.00
6,280.80	0.00	0.006	0.020	0.00	0.00
6,280.81	0.00	0.006	0.020	0.00	0.00
6,280.82	0.00	0.006	0.020	0.00	0.00
6,280.83	0.00	0.007	0.021	0.00	0.00
6,280.84	0.00	0.007	0.021	0.00	0.00
6,280.85	0.00	0.007	0.022	0.00	0.00
6,280.86	0.00	0.007	0.022	0.00	0.00
6,280.87	0.00	0.008	0.023	0.00	0.00
6,280.88	0.00	0.008	0.023	0.00	0.00
6,280.89	0.00	0.008	0.024	0.00	0.00

Pond Detailed Report: Pond

Elevation-Volume-Flow Table

Elevation (ft)	Outflow (ft ³ /s)	Storage (ac-ft)	Area (acres)	Infiltration (ft ³ /s)	Flow (Total) (ft ³ /s)
6,280.90	0.00	0.008	0.024	0.00	0.00
6,280.91	0.00	0.008	0.024	0.00	0.00
6,280.92	0.00	0.009	0.025	0.00	0.00
6,280.93	0.00	0.009	0.025	0.00	0.00
6,280.94	0.00	0.009	0.026	0.00	0.00
6,280.95	0.00	0.009	0.026	0.00	0.00
6,280.96	0.00	0.010	0.027	0.00	0.00
6,280.97	0.00	0.010	0.027	0.00	0.00
6,280.98	0.00	0.010	0.028	0.00	0.00
6,280.99	0.00	0.011	0.028	0.00	0.00
6,281.00	0.00	0.011	0.029	0.00	0.00
6,281.01	0.00	0.011	0.029	0.00	0.00
6,281.02	0.00	0.011	0.030	0.00	0.00
6,281.03	0.00	0.012	0.030	0.00	0.00
6,281.04	0.00	0.012	0.031	0.00	0.00
6,281.05	0.00	0.012	0.032	0.00	0.00
6,281.06	0.00	0.013	0.032	0.00	0.00
6,281.07	0.00	0.013	0.033	0.00	0.00
6,281.08	0.00	0.013	0.033	0.00	0.00
6,281.09	0.00	0.014	0.034	0.00	0.00
6,281.10	0.00	0.014	0.034	0.00	0.00
6,281.11	0.00	0.014	0.035	0.00	0.00
6,281.12	0.00	0.015	0.035	0.00	0.00
6,281.13	0.00	0.015	0.036	0.00	0.00
6,281.14	0.00	0.015	0.037	0.00	0.00
6,281.15	0.00	0.016	0.037	0.00	0.00
6,281.16	0.00	0.016	0.038	0.00	0.00
6,281.17	0.00	0.017	0.038	0.00	0.00
6,281.18	0.00	0.017	0.039	0.00	0.00
6,281.19	0.00	0.017	0.039	0.00	0.00
6,281.20	0.00	0.018	0.040	0.00	0.00
6,281.21	0.00	0.018	0.041	0.00	0.00
6,281.22	0.00	0.019	0.041	0.00	0.00
6,281.23	0.00	0.019	0.042	0.00	0.00
6,281.24	0.00	0.019	0.043	0.00	0.00
6,281.25	0.00	0.020	0.043	0.00	0.00
6,281.26	0.00	0.020	0.044	0.00	0.00
6,281.27	0.00	0.021	0.044	0.00	0.00
6,281.28	0.00	0.021	0.045	0.00	0.00
6,281.29	0.00	0.022	0.046	0.00	0.00
6,281.30	0.00	0.022	0.046	0.00	0.00
6,281.31	0.00	0.022	0.047	0.00	0.00
6,281.32	0.00	0.023	0.048	0.00	0.00
6,281.33	0.00	0.023	0.048	0.00	0.00

Pond Detailed Report: Pond

Elevation-Volume-Flow Table

Elevation (ft)	Outflow (ft ³ /s)	Storage (ac-ft)	Area (acres)	Infiltration (ft ³ /s)	Flow (Total) (ft ³ /s)
6,281.34	0.00	0.024	0.049	0.00	0.00
6,281.35	0.00	0.024	0.050	0.00	0.00
6,281.36	0.00	0.025	0.050	0.00	0.00
6,281.37	0.00	0.025	0.051	0.00	0.00
6,281.38	0.00	0.026	0.052	0.00	0.00
6,281.39	0.00	0.026	0.052	0.00	0.00
6,281.40	0.00	0.027	0.053	0.00	0.00
6,281.41	0.00	0.028	0.054	0.00	0.00
6,281.42	0.00	0.028	0.054	0.00	0.00
6,281.43	0.00	0.029	0.055	0.00	0.00
6,281.44	0.00	0.029	0.056	0.00	0.00
6,281.45	0.00	0.030	0.057	0.00	0.00
6,281.46	0.00	0.030	0.057	0.00	0.00
6,281.47	0.00	0.031	0.058	0.00	0.00
6,281.48	0.00	0.031	0.059	0.00	0.00
6,281.49	0.00	0.032	0.059	0.00	0.00
6,281.50	0.00	0.033	0.060	0.00	0.00
6,281.51	0.00	0.033	0.061	0.00	0.00
6,281.52	0.00	0.034	0.062	0.00	0.00
6,281.53	0.00	0.034	0.062	0.00	0.00
6,281.54	0.00	0.035	0.063	0.00	0.00
6,281.55	0.00	0.036	0.064	0.00	0.00
6,281.56	0.00	0.036	0.065	0.00	0.00
6,281.57	0.00	0.037	0.066	0.00	0.00
6,281.58	0.00	0.038	0.066	0.00	0.00
6,281.59	0.00	0.038	0.067	0.00	0.00
6,281.60	0.00	0.039	0.068	0.00	0.00
6,281.61	0.00	0.040	0.069	0.00	0.00
6,281.62	0.00	0.040	0.069	0.00	0.00
6,281.63	0.00	0.041	0.070	0.00	0.00
6,281.64	0.00	0.042	0.071	0.00	0.00
6,281.65	0.00	0.043	0.072	0.00	0.00
6,281.66	0.00	0.043	0.073	0.00	0.00
6,281.67	0.00	0.044	0.073	0.00	0.00
6,281.68	0.00	0.045	0.074	0.00	0.00
6,281.69	0.00	0.045	0.075	0.00	0.00
6,281.70	0.00	0.046	0.076	0.00	0.00
6,281.71	0.00	0.047	0.077	0.00	0.00
6,281.72	0.00	0.048	0.078	0.00	0.00
6,281.73	0.00	0.049	0.078	0.00	0.00
6,281.74	0.00	0.049	0.079	0.00	0.00
6,281.75	0.00	0.050	0.080	0.00	0.00
6,281.76	0.00	0.051	0.081	0.00	0.00
6,281.77	0.00	0.052	0.082	0.00	0.00

Pond Detailed Report: Pond

Elevation-Volume-Flow Table

Elevation (ft)	Outflow (ft ³ /s)	Storage (ac-ft)	Area (acres)	Infiltration (ft ³ /s)	Flow (Total) (ft ³ /s)
6,281.78	0.00	0.053	0.083	0.00	0.00
6,281.79	0.00	0.053	0.084	0.00	0.00
6,281.80	0.00	0.054	0.084	0.00	0.00
6,281.81	0.00	0.055	0.085	0.00	0.00
6,281.82	0.00	0.056	0.086	0.00	0.00
6,281.83	0.00	0.057	0.087	0.00	0.00
6,281.84	0.00	0.058	0.088	0.00	0.00
6,281.85	0.00	0.059	0.089	0.00	0.00
6,281.86	0.00	0.059	0.090	0.00	0.00
6,281.87	0.00	0.060	0.091	0.00	0.00
6,281.88	0.00	0.061	0.092	0.00	0.00
6,281.89	0.00	0.062	0.093	0.00	0.00
6,281.90	0.00	0.063	0.093	0.00	0.00
6,281.91	0.00	0.064	0.094	0.00	0.00
6,281.92	0.00	0.065	0.095	0.00	0.00
6,281.93	0.00	0.066	0.096	0.00	0.00
6,281.94	0.00	0.067	0.097	0.00	0.00
6,281.95	0.00	0.068	0.098	0.00	0.00
6,281.96	0.00	0.069	0.099	0.00	0.00
6,281.97	0.00	0.070	0.100	0.00	0.00
6,281.98	0.00	0.071	0.101	0.00	0.00
6,281.99	0.00	0.072	0.102	0.00	0.00
6,282.00	0.00	0.073	0.103	0.00	0.00
6,282.01	0.00	0.074	0.103	0.00	0.00
6,282.02	0.00	0.075	0.103	0.00	0.00
6,282.03	0.00	0.076	0.104	0.00	0.00
6,282.04	0.00	0.077	0.104	0.00	0.00
6,282.05	0.01	0.078	0.104	0.00	0.01
6,282.06	0.01	0.079	0.105	0.00	0.01
6,282.07	0.01	0.080	0.105	0.00	0.01
6,282.08	0.02	0.081	0.105	0.00	0.02
6,282.09	0.02	0.082	0.105	0.00	0.02
6,282.10	0.03	0.083	0.106	0.00	0.03
6,282.11	0.04	0.084	0.106	0.00	0.04
6,282.12	0.04	0.086	0.106	0.00	0.04
6,282.13	0.05	0.087	0.107	0.00	0.05
6,282.14	0.06	0.088	0.107	0.00	0.06
6,282.15	0.06	0.089	0.107	0.00	0.06
6,282.16	0.07	0.090	0.108	0.00	0.07
6,282.17	0.08	0.091	0.108	0.00	0.08
6,282.18	0.09	0.092	0.108	0.00	0.09
6,282.19	0.10	0.093	0.108	0.00	0.10
6,282.20	0.11	0.094	0.109	0.00	0.11
6,282.21	0.13	0.095	0.109	0.00	0.13

Pond Detailed Report: Pond

Elevation-Volume-Flow Table

Elevation (ft)	Outflow (ft ³ /s)	Storage (ac-ft)	Area (acres)	Infiltration (ft ³ /s)	Flow (Total) (ft ³ /s)
6,282.22	0.14	0.096	0.109	0.00	0.14
6,282.23	0.15	0.097	0.110	0.00	0.15
6,282.24	0.16	0.098	0.110	0.00	0.16
6,282.25	0.17	0.100	0.110	0.00	0.17
6,282.26	0.19	0.101	0.110	0.00	0.19
6,282.27	0.20	0.102	0.111	0.00	0.20
6,282.28	0.22	0.103	0.111	0.00	0.22
6,282.29	0.23	0.104	0.111	0.00	0.23
6,282.30	0.24	0.105	0.112	0.00	0.24
6,282.31	0.26	0.106	0.112	0.00	0.26
6,282.32	0.28	0.107	0.112	0.00	0.28
6,282.33	0.29	0.108	0.113	0.00	0.29
6,282.34	0.31	0.110	0.113	0.00	0.31
6,282.35	0.33	0.111	0.113	0.00	0.33
6,282.36	0.34	0.112	0.113	0.00	0.34
6,282.37	0.36	0.113	0.114	0.00	0.36
6,282.38	0.38	0.114	0.114	0.00	0.38
6,282.39	0.40	0.115	0.114	0.00	0.40
6,282.40	0.42	0.116	0.115	0.00	0.42
6,282.41	0.44	0.118	0.115	0.00	0.44
6,282.42	0.46	0.119	0.115	0.00	0.46
6,282.43	0.48	0.120	0.116	0.00	0.48
6,282.44	0.50	0.121	0.116	0.00	0.50
6,282.45	0.52	0.122	0.116	0.00	0.52
6,282.46	0.54	0.123	0.116	0.00	0.54
6,282.47	0.56	0.125	0.117	0.00	0.56
6,282.48	0.59	0.126	0.117	0.00	0.59
6,282.49	0.61	0.127	0.117	0.00	0.61
6,282.50	0.63	0.128	0.118	0.00	0.63
6,282.51	0.65	0.129	0.118	0.00	0.65
6,282.52	0.67	0.130	0.118	0.00	0.67
6,282.53	0.70	0.132	0.119	0.00	0.70
6,282.54	0.72	0.133	0.119	0.00	0.72
6,282.55	0.74	0.134	0.119	0.00	0.74
6,282.56	0.77	0.135	0.120	0.00	0.77
6,282.57	0.79	0.136	0.120	0.00	0.79
6,282.58	0.82	0.138	0.120	0.00	0.82
6,282.59	0.84	0.139	0.120	0.00	0.84
6,282.60	0.87	0.140	0.121	0.00	0.87
6,282.61	0.89	0.141	0.121	0.00	0.89
6,282.62	0.92	0.142	0.121	0.00	0.92
6,282.63	0.94	0.144	0.122	0.00	0.94
6,282.64	0.97	0.145	0.122	0.00	0.97
6,282.65	0.99	0.146	0.122	0.00	0.99

Pond Detailed Report: Pond

Elevation-Volume-Flow Table

Elevation (ft)	Outflow (ft ³ /s)	Storage (ac-ft)	Area (acres)	Infiltration (ft ³ /s)	Flow (Total) (ft ³ /s)
6,282.66	1.02	0.147	0.123	0.00	1.02
6,282.67	1.04	0.149	0.123	0.00	1.04
6,282.68	1.07	0.150	0.123	0.00	1.07
6,282.69	1.10	0.151	0.124	0.00	1.10
6,282.70	1.12	0.152	0.124	0.00	1.12
6,282.71	1.15	0.153	0.124	0.00	1.15
6,282.72	1.18	0.155	0.124	0.00	1.18
6,282.73	1.20	0.156	0.125	0.00	1.20
6,282.74	1.23	0.157	0.125	0.00	1.23
6,282.75	1.56	0.158	0.125	0.00	1.56
6,282.76	1.58	0.160	0.126	0.00	1.58
6,282.77	1.60	0.161	0.126	0.00	1.60
6,282.78	1.62	0.162	0.126	0.00	1.62
6,282.79	1.64	0.163	0.127	0.00	1.64
6,282.80	1.66	0.165	0.127	0.00	1.66
6,282.81	1.68	0.166	0.127	0.00	1.68
6,282.82	1.70	0.167	0.128	0.00	1.70
6,282.83	1.72	0.169	0.128	0.00	1.72
6,282.84	1.74	0.170	0.128	0.00	1.74
6,282.85	1.76	0.171	0.129	0.00	1.76
6,282.86	1.78	0.172	0.129	0.00	1.78
6,282.87	1.80	0.174	0.129	0.00	1.80
6,282.88	1.81	0.175	0.130	0.00	1.81
6,282.89	1.83	0.176	0.130	0.00	1.83
6,282.90	1.85	0.178	0.130	0.00	1.85
6,282.91	1.87	0.179	0.131	0.00	1.87
6,282.92	1.88	0.180	0.131	0.00	1.88
6,282.93	1.90	0.182	0.131	0.00	1.90
6,282.94	1.92	0.183	0.131	0.00	1.92
6,282.95	1.93	0.184	0.132	0.00	1.93
6,282.96	1.95	0.185	0.132	0.00	1.95
6,282.97	1.97	0.187	0.132	0.00	1.97
6,282.98	1.98	0.188	0.133	0.00	1.98
6,282.99	2.00	0.189	0.133	0.00	2.00
6,283.00	2.02	0.191	0.133	0.00	2.02
6,283.01	2.03	0.192	0.134	0.00	2.03
6,283.02	2.05	0.193	0.134	0.00	2.05
6,283.03	2.07	0.195	0.134	0.00	2.07
6,283.04	2.09	0.196	0.135	0.00	2.09
6,283.05	2.11	0.198	0.135	0.00	2.11
6,283.06	2.14	0.199	0.135	0.00	2.14
6,283.07	2.16	0.200	0.136	0.00	2.16
6,283.08	2.19	0.202	0.136	0.00	2.19
6,283.09	2.21	0.203	0.136	0.00	2.21

Pond Detailed Report: Pond

Elevation-Volume-Flow Table

Elevation (ft)	Outflow (ft ³ /s)	Storage (ac-ft)	Area (acres)	Infiltration (ft ³ /s)	Flow (Total) (ft ³ /s)
6,283.10	2.24	0.204	0.136	0.00	2.24
6,283.11	2.27	0.206	0.137	0.00	2.27
6,283.12	2.30	0.207	0.137	0.00	2.30
6,283.13	2.33	0.208	0.137	0.00	2.33
6,283.14	2.36	0.210	0.138	0.00	2.36
6,283.15	2.40	0.211	0.138	0.00	2.40
6,283.16	2.43	0.213	0.138	0.00	2.43
6,283.17	2.47	0.214	0.139	0.00	2.47
6,283.18	2.51	0.215	0.139	0.00	2.51
6,283.19	2.54	0.217	0.139	0.00	2.54
6,283.20	2.58	0.218	0.139	0.00	2.58
6,283.21	2.62	0.219	0.140	0.00	2.62
6,283.22	2.66	0.221	0.140	0.00	2.66
6,283.23	2.71	0.222	0.140	0.00	2.71
6,283.24	2.75	0.224	0.141	0.00	2.75
6,283.25	2.80	0.225	0.141	0.00	2.80
6,283.26	2.84	0.227	0.141	0.00	2.84
6,283.27	2.89	0.228	0.142	0.00	2.89
6,283.28	2.94	0.229	0.142	0.00	2.94
6,283.29	2.98	0.231	0.142	0.00	2.98
6,283.30	3.04	0.232	0.143	0.00	3.04
6,283.31	3.08	0.234	0.143	0.00	3.08
6,283.32	3.14	0.235	0.143	0.00	3.14
6,283.33	3.19	0.236	0.144	0.00	3.19
6,283.34	3.25	0.238	0.144	0.00	3.25
6,283.35	3.30	0.239	0.144	0.00	3.30
6,283.36	3.36	0.241	0.144	0.00	3.36
6,283.37	3.42	0.242	0.145	0.00	3.42
6,283.38	3.47	0.244	0.145	0.00	3.47
6,283.39	3.53	0.245	0.145	0.00	3.53
6,283.40	3.59	0.247	0.146	0.00	3.59
6,283.41	3.65	0.248	0.146	0.00	3.65
6,283.42	3.71	0.250	0.146	0.00	3.71
6,283.43	3.78	0.251	0.147	0.00	3.78
6,283.44	3.83	0.252	0.147	0.00	3.83
6,283.45	3.90	0.254	0.147	0.00	3.90
6,283.46	3.96	0.255	0.148	0.00	3.96
6,283.47	4.03	0.257	0.148	0.00	4.03
6,283.48	4.10	0.258	0.148	0.00	4.10
6,283.49	4.17	0.260	0.149	0.00	4.17
6,283.50	4.23	0.261	0.149	0.00	4.23
6,283.51	4.30	0.263	0.149	0.00	4.30
6,283.52	4.38	0.264	0.150	0.00	4.38
6,283.53	4.44	0.266	0.150	0.00	4.44

Pond Detailed Report: Pond

Elevation-Volume-Flow Table

Elevation (ft)	Outflow (ft ³ /s)	Storage (ac-ft)	Area (acres)	Infiltration (ft ³ /s)	Flow (Total) (ft ³ /s)
6,283.54	4.52	0.267	0.150	0.00	4.52
6,283.55	4.59	0.269	0.150	0.00	4.59
6,283.56	4.67	0.270	0.151	0.00	4.67
6,283.57	4.73	0.272	0.151	0.00	4.73
6,283.58	4.81	0.273	0.151	0.00	4.81
6,283.59	4.88	0.275	0.152	0.00	4.88
6,283.60	4.96	0.276	0.152	0.00	4.96
6,283.61	5.04	0.278	0.152	0.00	5.04
6,283.62	5.12	0.279	0.153	0.00	5.12
6,283.63	5.19	0.281	0.153	0.00	5.19
6,283.64	5.27	0.282	0.153	0.00	5.27
6,283.65	5.34	0.284	0.154	0.00	5.34
6,283.66	5.43	0.286	0.154	0.00	5.43
6,283.67	5.52	0.287	0.154	0.00	5.52
6,283.68	5.59	0.289	0.155	0.00	5.59
6,283.69	5.68	0.290	0.155	0.00	5.68
6,283.70	5.76	0.292	0.155	0.00	5.76
6,283.71	5.84	0.293	0.156	0.00	5.84
6,283.72	5.92	0.295	0.156	0.00	5.92
6,283.73	6.01	0.296	0.156	0.00	6.01
6,283.74	6.09	0.298	0.157	0.00	6.09
6,283.75	6.18	0.300	0.157	0.00	6.18
6,283.76	6.26	0.301	0.157	0.00	6.26
6,283.77	6.35	0.303	0.158	0.00	6.35
6,283.78	6.43	0.304	0.158	0.00	6.43
6,283.79	6.52	0.306	0.158	0.00	6.52
6,283.80	6.60	0.307	0.159	0.00	6.60
6,283.81	6.69	0.309	0.159	0.00	6.69
6,283.82	6.78	0.311	0.159	0.00	6.78
6,283.83	6.87	0.312	0.160	0.00	6.87
6,283.84	6.95	0.314	0.160	0.00	6.95
6,283.85	7.05	0.315	0.160	0.00	7.05
6,283.86	7.13	0.317	0.161	0.00	7.13
6,283.87	7.22	0.319	0.161	0.00	7.22
6,283.88	7.31	0.320	0.161	0.00	7.31
6,283.89	7.41	0.322	0.161	0.00	7.41
6,283.90	7.50	0.323	0.162	0.00	7.50
6,283.91	7.59	0.325	0.162	0.00	7.59
6,283.92	7.67	0.327	0.162	0.00	7.67
6,283.93	7.77	0.328	0.163	0.00	7.77
6,283.94	7.86	0.330	0.163	0.00	7.86
6,283.95	7.96	0.332	0.163	0.00	7.96
6,283.96	8.05	0.333	0.164	0.00	8.05
6,283.97	8.14	0.335	0.164	0.00	8.14

Pond Detailed Report: Pond

Elevation-Volume-Flow Table

Elevation (ft)	Outflow (ft ³ /s)	Storage (ac-ft)	Area (acres)	Infiltration (ft ³ /s)	Flow (Total) (ft ³ /s)
6,283.98	8.23	0.337	0.164	0.00	8.23
6,283.99	8.32	0.338	0.165	0.00	8.32
6,284.00	8.69	0.340	0.165	0.00	8.69
6,284.01	8.75	0.341	0.165	0.00	8.75
6,284.02	8.82	0.343	0.166	0.00	8.82
6,284.03	8.88	0.345	0.166	0.00	8.88
6,284.04	8.94	0.346	0.166	0.00	8.94
6,284.05	9.00	0.348	0.167	0.00	9.00
6,284.06	9.06	0.350	0.167	0.00	9.06
6,284.07	9.13	0.351	0.167	0.00	9.13
6,284.08	9.19	0.353	0.168	0.00	9.19
6,284.09	9.25	0.355	0.168	0.00	9.25
6,284.10	9.31	0.356	0.168	0.00	9.31
6,284.11	9.36	0.358	0.169	0.00	9.36
6,284.12	9.42	0.360	0.169	0.00	9.42
6,284.13	9.48	0.362	0.169	0.00	9.48
6,284.14	9.54	0.363	0.170	0.00	9.54
6,284.15	9.60	0.365	0.170	0.00	9.60
6,284.16	9.65	0.367	0.170	0.00	9.65
6,284.17	9.71	0.368	0.171	0.00	9.71
6,284.18	9.77	0.370	0.171	0.00	9.77
6,284.19	9.82	0.372	0.171	0.00	9.82
6,284.20	9.88	0.373	0.172	0.00	9.88
6,284.21	9.93	0.375	0.172	0.00	9.93
6,284.22	9.99	0.377	0.172	0.00	9.99
6,284.23	10.04	0.379	0.173	0.00	10.04
6,284.24	10.10	0.380	0.173	0.00	10.10
6,284.25	10.15	0.382	0.173	0.00	10.15
6,284.26	10.20	0.384	0.173	0.00	10.20
6,284.27	10.26	0.386	0.174	0.00	10.26
6,284.28	10.31	0.387	0.174	0.00	10.31
6,284.29	10.36	0.389	0.174	0.00	10.36
6,284.30	10.42	0.391	0.175	0.00	10.42
6,284.31	10.47	0.393	0.175	0.00	10.47
6,284.32	10.52	0.394	0.175	0.00	10.52
6,284.33	10.57	0.396	0.176	0.00	10.57
6,284.34	10.62	0.398	0.176	0.00	10.62
6,284.35	10.67	0.400	0.176	0.00	10.67
6,284.36	10.72	0.401	0.177	0.00	10.72
6,284.37	10.77	0.403	0.177	0.00	10.77
6,284.38	10.82	0.405	0.177	0.00	10.82
6,284.39	10.87	0.407	0.178	0.00	10.87
6,284.40	10.92	0.408	0.178	0.00	10.92
6,284.41	10.97	0.410	0.178	0.00	10.97

Pond Detailed Report: Pond

Elevation-Volume-Flow Table

Elevation (ft)	Outflow (ft ³ /s)	Storage (ac-ft)	Area (acres)	Infiltration (ft ³ /s)	Flow (Total) (ft ³ /s)
6,284.42	11.02	0.412	0.179	0.00	11.02
6,284.43	11.07	0.414	0.179	0.00	11.07
6,284.44	11.12	0.416	0.179	0.00	11.12
6,284.45	11.17	0.417	0.180	0.00	11.17
6,284.46	11.22	0.419	0.180	0.00	11.22
6,284.47	11.26	0.421	0.180	0.00	11.26
6,284.48	11.31	0.423	0.181	0.00	11.31
6,284.49	11.36	0.425	0.181	0.00	11.36
6,284.50	11.41	0.426	0.181	0.00	11.41
6,284.51	11.45	0.428	0.182	0.00	11.45
6,284.52	11.50	0.430	0.182	0.00	11.50
6,284.53	11.55	0.432	0.182	0.00	11.55
6,284.54	11.59	0.434	0.183	0.00	11.59
6,284.55	11.64	0.436	0.183	0.00	11.64
6,284.56	11.69	0.437	0.183	0.00	11.69
6,284.57	11.73	0.439	0.184	0.00	11.73
6,284.58	11.78	0.441	0.184	0.00	11.78
6,284.59	11.82	0.443	0.184	0.00	11.82
6,284.60	11.87	0.445	0.185	0.00	11.87
6,284.61	11.91	0.447	0.185	0.00	11.91
6,284.62	11.96	0.448	0.185	0.00	11.96
6,284.63	12.00	0.450	0.186	0.00	12.00
6,284.64	12.05	0.452	0.186	0.00	12.05
6,284.65	12.09	0.454	0.186	0.00	12.09
6,284.66	12.14	0.456	0.187	0.00	12.14
6,284.67	12.18	0.458	0.187	0.00	12.18
6,284.68	12.22	0.460	0.187	0.00	12.22
6,284.69	12.27	0.461	0.188	0.00	12.27
6,284.70	12.31	0.463	0.188	0.00	12.31
6,284.71	12.35	0.465	0.188	0.00	12.35
6,284.72	12.40	0.467	0.189	0.00	12.40
6,284.73	12.44	0.469	0.189	0.00	12.44
6,284.74	12.48	0.471	0.189	0.00	12.48
6,284.75	12.53	0.473	0.190	0.00	12.53
6,284.76	12.57	0.475	0.190	0.00	12.57
6,284.77	12.61	0.477	0.190	0.00	12.61
6,284.78	12.65	0.478	0.191	0.00	12.65
6,284.79	12.70	0.480	0.191	0.00	12.70
6,284.80	12.74	0.482	0.191	0.00	12.74
6,284.81	12.78	0.484	0.192	0.00	12.78
6,284.82	12.82	0.486	0.192	0.00	12.82
6,284.83	12.86	0.488	0.192	0.00	12.86
6,284.84	12.90	0.490	0.193	0.00	12.90
6,284.85	12.94	0.492	0.193	0.00	12.94

Pond Detailed Report: Pond

Elevation-Volume-Flow Table

Elevation (ft)	Outflow (ft ³ /s)	Storage (ac-ft)	Area (acres)	Infiltration (ft ³ /s)	Flow (Total) (ft ³ /s)
6,284.86	12.99	0.494	0.194	0.00	12.99
6,284.87	13.03	0.496	0.194	0.00	13.03
6,284.88	13.07	0.498	0.194	0.00	13.07
6,284.89	13.11	0.500	0.195	0.00	13.11
6,284.90	13.15	0.502	0.195	0.00	13.15
6,284.91	13.19	0.504	0.195	0.00	13.19
6,284.92	13.23	0.506	0.196	0.00	13.23
6,284.93	13.27	0.507	0.196	0.00	13.27
6,284.94	13.31	0.509	0.196	0.00	13.31
6,284.95	13.35	0.511	0.197	0.00	13.35
6,284.96	13.39	0.513	0.197	0.00	13.39
6,284.97	13.43	0.515	0.197	0.00	13.43
6,284.98	13.47	0.517	0.198	0.00	13.47
6,284.99	13.51	0.519	0.198	0.00	13.51
6,285.00	13.55	0.521	0.198	0.00	13.55
6,285.01	13.59	0.523	0.199	0.00	13.59
6,285.02	13.63	0.525	0.199	0.00	13.63
6,285.03	13.67	0.527	0.199	0.00	13.67
6,285.04	13.70	0.529	0.200	0.00	13.70
6,285.05	13.74	0.531	0.200	0.00	13.74
6,285.06	13.78	0.533	0.200	0.00	13.78
6,285.07	13.82	0.535	0.201	0.00	13.82
6,285.08	13.86	0.537	0.201	0.00	13.86
6,285.09	13.90	0.539	0.201	0.00	13.90
6,285.10	13.93	0.541	0.202	0.00	13.93
6,285.11	13.97	0.543	0.202	0.00	13.97
6,285.12	14.01	0.545	0.202	0.00	14.01
6,285.13	14.05	0.547	0.203	0.00	14.05
6,285.14	14.09	0.549	0.203	0.00	14.09
6,285.15	14.12	0.551	0.204	0.00	14.12
6,285.16	14.16	0.553	0.204	0.00	14.16
6,285.17	14.20	0.556	0.204	0.00	14.20
6,285.18	14.24	0.558	0.205	0.00	14.24
6,285.19	14.27	0.560	0.205	0.00	14.27
6,285.20	14.31	0.562	0.205	0.00	14.31
6,285.21	14.35	0.564	0.206	0.00	14.35
6,285.22	14.38	0.566	0.206	0.00	14.38
6,285.23	14.42	0.568	0.206	0.00	14.42
6,285.24	14.46	0.570	0.207	0.00	14.46
6,285.25	14.49	0.572	0.207	0.00	14.49
6,285.26	14.53	0.574	0.207	0.00	14.53
6,285.27	14.57	0.576	0.208	0.00	14.57
6,285.28	14.60	0.578	0.208	0.00	14.60
6,285.29	14.64	0.580	0.208	0.00	14.64

Pond Detailed Report: Pond

Elevation-Volume-Flow Table

Elevation (ft)	Outflow (ft ³ /s)	Storage (ac-ft)	Area (acres)	Infiltration (ft ³ /s)	Flow (Total) (ft ³ /s)
6,285.30	14.68	0.582	0.209	0.00	14.68
6,285.31	14.71	0.584	0.209	0.00	14.71
6,285.32	14.75	0.587	0.209	0.00	14.75
6,285.33	14.78	0.589	0.210	0.00	14.78
6,285.34	14.82	0.591	0.210	0.00	14.82
6,285.35	14.86	0.593	0.210	0.00	14.86
6,285.36	14.89	0.595	0.211	0.00	14.89
6,285.37	14.93	0.597	0.211	0.00	14.93
6,285.38	14.96	0.599	0.212	0.00	14.96
6,285.39	15.00	0.601	0.212	0.00	15.00
6,285.40	15.03	0.603	0.212	0.00	15.03
6,285.41	15.07	0.606	0.213	0.00	15.07
6,285.42	15.10	0.608	0.213	0.00	15.10
6,285.43	15.14	0.610	0.213	0.00	15.14
6,285.44	15.17	0.612	0.214	0.00	15.17
6,285.45	15.21	0.614	0.214	0.00	15.21
6,285.46	15.24	0.616	0.214	0.00	15.24
6,285.47	15.28	0.618	0.215	0.00	15.28
6,285.48	15.31	0.620	0.215	0.00	15.31
6,285.49	15.35	0.623	0.215	0.00	15.35
6,285.50	15.38	0.625	0.216	0.00	15.38
6,285.51	15.42	0.627	0.216	0.00	15.42
6,285.52	15.45	0.629	0.217	0.00	15.45
6,285.53	15.48	0.631	0.217	0.00	15.48
6,285.54	15.52	0.633	0.217	0.00	15.52
6,285.55	15.55	0.636	0.218	0.00	15.55
6,285.56	15.59	0.638	0.218	0.00	15.59
6,285.57	15.62	0.640	0.218	0.00	15.62
6,285.58	15.65	0.642	0.219	0.00	15.65
6,285.59	15.69	0.644	0.219	0.00	15.69
6,285.60	15.72	0.647	0.219	0.00	15.72
6,285.61	15.75	0.649	0.220	0.00	15.75
6,285.62	15.79	0.651	0.220	0.00	15.79
6,285.63	15.82	0.653	0.220	0.00	15.82
6,285.64	15.85	0.655	0.221	0.00	15.85
6,285.65	15.89	0.658	0.221	0.00	15.89
6,285.66	15.92	0.660	0.222	0.00	15.92
6,285.67	15.95	0.662	0.222	0.00	15.95
6,285.68	15.99	0.664	0.222	0.00	15.99
6,285.69	16.02	0.666	0.223	0.00	16.02
6,285.70	16.05	0.669	0.223	0.00	16.05
6,285.71	16.09	0.671	0.223	0.00	16.09
6,285.72	16.12	0.673	0.224	0.00	16.12
6,285.73	16.15	0.675	0.224	0.00	16.15

Pond Detailed Report: Pond

Elevation-Volume-Flow Table

Elevation (ft)	Outflow (ft ³ /s)	Storage (ac-ft)	Area (acres)	Infiltration (ft ³ /s)	Flow (Total) (ft ³ /s)
6,285.74	16.18	0.678	0.224	0.00	16.18
6,285.75	16.22	0.680	0.225	0.00	16.22
6,285.76	16.25	0.682	0.225	0.00	16.25
6,285.77	16.28	0.684	0.226	0.00	16.28
6,285.78	16.31	0.687	0.226	0.00	16.31
6,285.79	16.35	0.689	0.226	0.00	16.35
6,285.80	16.38	0.691	0.227	0.00	16.38
6,285.81	16.41	0.693	0.227	0.00	16.41
6,285.82	16.44	0.696	0.227	0.00	16.44
6,285.83	16.48	0.698	0.228	0.00	16.48
6,285.84	16.51	0.700	0.228	0.00	16.51
6,285.85	16.54	0.703	0.228	0.00	16.54
6,285.86	16.57	0.705	0.229	0.00	16.57
6,285.87	16.60	0.707	0.229	0.00	16.60
6,285.88	16.63	0.709	0.230	0.00	16.63
6,285.89	16.67	0.712	0.230	0.00	16.67
6,285.90	16.70	0.714	0.230	0.00	16.70
6,285.91	16.73	0.716	0.231	0.00	16.73
6,285.92	16.76	0.719	0.231	0.00	16.76
6,285.93	16.79	0.721	0.231	0.00	16.79
6,285.94	16.82	0.723	0.232	0.00	16.82
6,285.95	16.86	0.726	0.232	0.00	16.86
6,285.96	16.89	0.728	0.233	0.00	16.89
6,285.97	16.92	0.730	0.233	0.00	16.92
6,285.98	16.95	0.733	0.233	0.00	16.95
6,285.99	16.98	0.735	0.234	0.00	16.98
6,286.00	17.01	0.737	0.234	0.00	17.01
2S/t + O (ft ³ /s)					
0.00					
0.00					
0.00					
0.01					
0.01					
0.01					
0.02					
0.02					
0.03					
0.03					
0.04					
0.04					
0.05					
0.05					
0.06					

Pond Detailed Report: Pond

Elevation-Volume-Flow Table

2S/t + O (ft ³ /s)
0.07
0.08
0.09
0.10
0.11
0.12
0.13
0.15
0.16
0.17
0.19
0.21
0.22
0.24
0.26
0.28
0.30
0.32
0.34
0.37
0.39
0.42
0.44
0.47
0.50
0.53
0.56
0.59
0.63
0.66
0.70
0.74
0.77
0.81
0.85
0.90
0.94
0.99
1.03
1.08
1.13
1.18
1.24
1.29

Pond Detailed Report: Pond

Elevation-Volume-Flow Table

2S/t + O (ft ³ /s)
1.35
1.40
1.46
1.52
1.58
1.65
1.71
1.78
1.85
1.92
1.99
2.07
2.14
2.22
2.30
2.38
2.47
2.55
2.64
2.73
2.82
2.92
3.01
3.11
3.21
3.31
3.42
3.52
3.63
3.74
3.85
3.97
4.09
4.21
4.33
4.45
4.58
4.71
4.84
4.97
5.11
5.25
5.39
5.53

Pond Detailed Report: Pond

Elevation-Volume-Flow Table

2S/t + O (ft ³ /s)
5.68
5.83
5.98
6.13
6.29
6.45
6.61
6.77
6.94
7.11
7.28
7.46
7.64
7.82
8.00
8.19
8.38
8.57
8.76
8.96
9.16
9.37
9.58
9.79
10.00
10.22
10.44
10.66
10.88
11.11
11.34
11.58
11.82
12.06
12.31
12.55
12.81
13.06
13.32
13.58
13.85
14.11
14.39
14.66

Pond Detailed Report: Pond

Elevation-Volume-Flow Table

2S/t + O (ft ³ /s)
14.94
15.22
15.51
15.80
16.09
16.39
16.69
16.99
17.30
17.61
17.93
18.25
18.57
18.90
19.23
19.56
19.90
20.24
20.59
20.94
21.29
21.65
22.01
22.37
22.74
23.12
23.50
23.88
24.26
24.65
25.05
25.45
25.85
26.25
26.67
27.08
27.50
27.92
28.35
28.79
29.22
29.66
30.11
30.56

Pond Detailed Report: Pond

Elevation-Volume-Flow Table

2S/t + O (ft ³ /s)
31.01
31.47
31.94
32.40
32.88
33.35
33.84
34.32
34.81
35.31
35.81
36.31
36.81
37.32
37.83
38.33
38.84
39.36
39.87
40.39
40.91
41.43
41.95
42.48
43.00
43.53
44.06
44.59
45.13
45.66
46.20
46.74
47.28
47.83
48.37
48.92
49.47
50.02
50.57
51.13
51.68
52.24
52.80
53.37

Pond Detailed Report: Pond

Elevation-Volume-Flow Table

2S/t + O (ft ³ /s)
53.93
54.50
55.06
55.63
56.21
56.78
57.35
57.93
58.51
59.09
59.67
60.26
60.84
61.43
62.02
62.61
63.20
63.80
64.39
64.99
65.59
66.19
66.80
67.40
68.01
68.62
69.23
69.84
70.45
71.07
71.69
72.30
72.92
73.55
74.17
74.79
75.42
76.05
76.68
77.31
78.25
78.88
79.51
80.14

Pond Detailed Report: Pond

Elevation-Volume-Flow Table

2S/t + O (ft ³ /s)
80.77
81.40
82.04
82.68
83.31
83.95
84.59
85.23
85.88
86.52
87.17
87.81
88.46
89.11
89.76
90.42
91.07
91.73
92.38
93.04
93.70
94.36
95.03
95.69
96.36
97.03
97.71
98.38
99.06
99.74
100.43
101.12
101.81
102.50
103.19
103.89
104.59
105.29
106.00
106.71
107.42
108.14
108.85
109.57

Pond Detailed Report: Pond

Elevation-Volume-Flow Table

2S/t + O (ft ³ /s)
110.30
111.02
111.74
112.47
113.21
113.94
114.67
115.42
116.15
116.90
117.65
118.40
119.15
119.91
120.66
121.42
122.18
122.95
123.71
124.48
125.26
126.02
126.80
127.58
128.36
129.15
129.93
130.72
131.51
132.30
133.09
133.90
134.70
135.50
136.30
137.11
137.91
138.72
139.55
140.36
141.18
141.99
142.81
143.64

Pond Detailed Report: Pond

Elevation-Volume-Flow Table

2S/t + O (ft ³ /s)
144.47
145.29
146.13
146.97
147.79
148.63
149.47
150.31
151.16
152.00
152.85
153.70
154.55
155.40
156.25
157.12
157.98
158.83
159.70
160.56
161.43
162.30
163.18
164.05
164.92
165.79
166.68
167.56
168.45
169.33
170.21
171.10
171.98
173.15
174.02
174.88
175.75
176.61
177.48
178.35
179.22
180.09
180.97
181.84

Pond Detailed Report: Pond

Elevation-Volume-Flow Table

2S/t + O (ft ³ /s)
182.71
183.59
184.47
185.34
186.22
187.10
187.99
188.87
189.75
190.64
191.52
192.41
193.30
194.19
195.08
195.97
196.87
197.76
198.66
199.56
200.45
201.35
202.26
203.16
204.06
204.97
205.87
206.78
207.69
208.60
209.51
210.43
211.34
212.26
213.18
214.09
215.01
215.94
216.86
217.78
218.71
219.64
220.56
221.49

Pond Detailed Report: Pond

Elevation-Volume-Flow Table

2S/t + O (ft ³ /s)
222.43
223.36
224.29
225.23
226.17
227.10
228.04
228.99
229.93
230.87
231.82
232.77
233.71
234.66
235.62
236.57
237.52
238.48
239.44
240.39
241.36
242.32
243.28
244.25
245.21
246.18
247.15
248.12
249.09
250.07
251.04
252.02
253.00
253.98
254.96
255.94
256.93
257.91
258.90
259.89
260.88
261.87
262.87
263.86

Pond Detailed Report: Pond

Elevation-Volume-Flow Table

2S/t + O (ft ³ /s)
264.86
265.86
266.86
267.86
268.86
269.87
270.87
271.88
272.89
273.90
274.91
275.93
276.94
277.96
278.98
280.00
281.02
282.04
283.07
284.09
285.12
286.15
287.18
288.22
289.25
290.29
291.32
292.36
293.40
294.45
295.49
296.54
297.58
298.63
299.68
300.73
301.79
302.84
303.90
304.96
306.02
307.08
308.14
309.21

Pond Detailed Report: Pond

Elevation-Volume-Flow Table

2S/t + O (ft ³ /s)
310.27
311.34
312.41
313.48
314.56
315.63
316.71
317.79
318.87
319.95
321.03
322.12
323.20
324.29
325.38
326.47
327.56
328.66
329.75
330.85
331.95
333.05
334.16
335.26
336.37
337.47
338.58
339.70
340.81
341.92
343.04
344.16
345.28
346.40
347.52
348.65
349.77
350.90
352.03
353.16
354.30
355.43
356.57
357.71

Pond Detailed Report: Pond

Elevation-Volume-Flow Table

2S/t + O (ft ³ /s)			
358.85			
359.99			
361.13			
362.28			
363.43			
364.58			
365.73			
366.88			
368.03			
369.19			
370.35			
371.50			
372.67			
373.83			
<hr/>			
Results			
<hr/>			
Volume	0.000 ac-ft	Elevation	6,280.00 ft
<hr/>			

Calculation Messages

Time (hours)	Message

Pond Detailed Report: Pond

<General>			
ID	27	Notes	
Label	PO-1	Hyperlinks	<Collection: 0 items>
GIS-IDs			
GIS-ID			
Geometry			
	X (ft)	Y (ft)	
	-33.23	-11.31	
	-29.04	2.28	
	-40.67	10.46	
	-52.04	1.93	
	-47.45	-11.52	
Active Topology			
Is Active?	True		
Infiltration			
Infiltration Method	No Infiltration		
Initial Conditions			
Is Outflow Averaging On?	False	Define Starting Water Surface Elevation	Pond Invert
Output			
Detention Time	Compute All Methods		
Runoff			
Scaled Area	0.008 acres		
Volume			
Pond Type	Elevation- Area	Use Void Space?	False

Elevation-Area

Pond Elevation (ft)	Pond Area (acres)
6,280.00	0.000
6,282.00	0.103
6,283.00	0.133
6,284.00	0.165

Pond Detailed Report: Pond

Elevation-Area

Pond Elevation (ft)	Pond Area (acres)
6,285.00	0.198
6,286.00	0.234

Results (Detention Time)

Time to Peak (Outflow + Infiltration, Peak to Peak Detention Time)	12.600 hours	Weighted Average Plug Time	1.110 hours
Time to Peak (Inflow, Peak to Peak Detention Time)	12.300 hours	Maximum Plug Volume Plug Time	0.418 hours
Detention Time (Peak to Peak)	0.300 hours	Maximum Inflow Plug Volume	0.075 ac-ft
Time to Centroid (Outflow)	14.098 hours	Time (Maximum Plug Volume, Start)	12.300 hours
Time to Centroid (Inflow)	13.478 hours	Time (Maximum Plug Volume, End)	12.350 hours
Detention Time (Centroid to Centroid)	0.620 hours		

Results (Flows)

Flow (Outlet)	0.00 ft ³ /s	Flow (Peak Total)	13.37 ft ³ /s
Flow (Total In)	0.00 ft ³ /s	Time to Peak (Total Out)	12.600 hours
Flow (Total Out)	0.00 ft ³ /s	Volume (Total Out)	2.242 ac-ft

Results (ICPM Initial Conditions)

Elevation (Starting Water Surface Computed)	(N/A) ft	Outflow (Starting)	(N/A) ft ³ /s
Volume (Starting)	(N/A) ac-ft	Infiltration (Starting ICPM)	(N/A) ft ³ /s

Results (ICPM Mass Balance)

Volume (Initial ICPM)	(N/A) ac-ft	Difference	(N/A) ac-ft
Volume (Total In ICPM)	(N/A) ac-ft	Elevation (Ending)	(N/A) ft
Volume (Total Out ICPM)	(N/A) ac-ft	Percent of Inflow Volume (Interconnected Pond Mass Balance)	(N/A) %
Volume (Ending)	(N/A) ac-ft		

Results (ICPM Maximum Storage)

Time to Maximum Storage	(N/A) hours	Volume (Maximum)	(N/A) ac-ft
Elevation (Maximum)	(N/A) ft		

Results (ICPM Routing)

Time to Peak (Pond Inflow, Forward Flow)	(N/A) hours	Pond Inflow, Total Volume In	(N/A) ac-ft
Pond Inflow, Forward Flow Peak	(N/A) ft ³ /s	Direction (Forward, Total In)	(N/A)

Pond Detailed Report: Pond

Results (ICPM Routing)			
Time to Peak (Infiltration, Forward Flow)	(N/A) hours	Pond Outflow, Total Volume In	(N/A) ac-ft
Infiltration, Forward Flow Peak	(N/A) ft ³ /s	Direction (Forward, Total Out)	(N/A)
Time to Peak (Pond Outflow, Forward Flow)	(N/A) hours	Pond Inflow, Total Volume Out	(N/A) ac-ft
Pond Outflow, Forward Flow Peak	(N/A) ft ³ /s	Direction (Reverse, Total In)	(N/A)
Time to Peak (Pond Inflow, Reverse Flow)	(N/A) hours	Pond Outflow, Total Volume Out	(N/A) ac-ft
Pond Inflow, Reverse Flow Peak	(N/A) ft ³ /s	Direction (Reverse, Total Out)	(N/A)
Time to Peak (Infiltration, Reverse Flow)	(N/A) hours	Infiltration, Total Volume Out	(N/A) ac-ft
Infiltration, Reverse Flow Peak	(N/A) ft ³ /s	Direction (Reverse, Total Infiltration Out)	(N/A)
Time to Peak (Pond Outflow, Reverse Flow)	(N/A) hours	Infiltration, Total Volume In	(N/A) ac-ft
Pond Outflow, Reverse Flow Peak	(N/A) ft ³ /s	Direction (Forward, Total Infiltration In)	(N/A)

Results (Infiltration)			
Infiltration	0.00 ft ³ /s	Infiltration Method (Computed)	No Infiltration

Results (Level Pool Initial Conditions)			
Elevation (Water Surface, Initial)	6,280.00 ft	Flow (Initial Infiltration)	0.00 ft ³ /s
Volume (Initial)	0.000 ac-ft	Flow (Initial, Total)	0.00 ft ³ /s
Flow (Initial Outlet)	0.00 ft ³ /s	Time Increment	0.050 hours

Results (Level Pool Mass Balance)			
Volume (Total Inflow)	2.357 ac-ft	Volume (Retained)	0.114 ac-ft
Volume (Total Infiltration)	0.000 ac-ft	Volume (Unrouted)	-0.002 ac-ft
Volume (Total Outlet Outflow)	2.242 ac-ft	Error (Mass Balance)	0.1 %

Results (Pond Routing)			
Flow (Peak In)	18.37 ft ³ /s	Time to Peak (Infiltration)	(N/A) hours
Time to Peak (Flow, In)	12.300 hours	Elevation (Water Surface, Peak)	6,284.95 ft
Flow (Peak Outlet)	13.37 ft ³ /s	Volume (Peak)	0.512 ac-ft
Time to Peak (Flow, Outlet)	12.600 hours	2S/t - O	0.00 ft ³ /s
Infiltration (Peak)	(N/A) ft ³ /s	2S/t + O	0.00 ft ³ /s

Elevation-Volume-Flow Table

Elevation (ft)	Outflow (ft ³ /s)	Storage (ac-ft)	Area (acres)	Infiltration (ft ³ /s)	Flow (Total) (ft ³ /s)
6,280.00	0.00	0.000	0.000	0.00	0.00
6,280.01	0.00	0.000	0.000	0.00	0.00

Pond Detailed Report: Pond

Elevation-Volume-Flow Table

Elevation (ft)	Outflow (ft ³ /s)	Storage (ac-ft)	Area (acres)	Infiltration (ft ³ /s)	Flow (Total) (ft ³ /s)
6,280.02	0.00	0.000	0.000	0.00	0.00
6,280.03	0.00	0.000	0.001	0.00	0.00
6,280.04	0.00	0.000	0.001	0.00	0.00
6,280.05	0.00	0.000	0.001	0.00	0.00
6,280.06	0.00	0.000	0.001	0.00	0.00
6,280.07	0.00	0.000	0.001	0.00	0.00
6,280.08	0.00	0.000	0.001	0.00	0.00
6,280.09	0.00	0.000	0.001	0.00	0.00
6,280.10	0.00	0.000	0.001	0.00	0.00
6,280.11	0.00	0.000	0.001	0.00	0.00
6,280.12	0.00	0.000	0.001	0.00	0.00
6,280.13	0.00	0.000	0.002	0.00	0.00
6,280.14	0.00	0.000	0.002	0.00	0.00
6,280.15	0.00	0.000	0.002	0.00	0.00
6,280.16	0.00	0.000	0.002	0.00	0.00
6,280.17	0.00	0.000	0.002	0.00	0.00
6,280.18	0.00	0.000	0.002	0.00	0.00
6,280.19	0.00	0.000	0.002	0.00	0.00
6,280.20	0.00	0.000	0.002	0.00	0.00
6,280.21	0.00	0.000	0.003	0.00	0.00
6,280.22	0.00	0.000	0.003	0.00	0.00
6,280.23	0.00	0.000	0.003	0.00	0.00
6,280.24	0.00	0.000	0.003	0.00	0.00
6,280.25	0.00	0.000	0.003	0.00	0.00
6,280.26	0.00	0.000	0.003	0.00	0.00
6,280.27	0.00	0.000	0.004	0.00	0.00
6,280.28	0.00	0.000	0.004	0.00	0.00
6,280.29	0.00	0.001	0.004	0.00	0.00
6,280.30	0.00	0.001	0.004	0.00	0.00
6,280.31	0.00	0.001	0.004	0.00	0.00
6,280.32	0.00	0.001	0.005	0.00	0.00
6,280.33	0.00	0.001	0.005	0.00	0.00
6,280.34	0.00	0.001	0.005	0.00	0.00
6,280.35	0.00	0.001	0.005	0.00	0.00
6,280.36	0.00	0.001	0.005	0.00	0.00
6,280.37	0.00	0.001	0.006	0.00	0.00
6,280.38	0.00	0.001	0.006	0.00	0.00
6,280.39	0.00	0.001	0.006	0.00	0.00
6,280.40	0.00	0.001	0.006	0.00	0.00
6,280.41	0.00	0.001	0.007	0.00	0.00
6,280.42	0.00	0.001	0.007	0.00	0.00
6,280.43	0.00	0.001	0.007	0.00	0.00
6,280.44	0.00	0.001	0.007	0.00	0.00
6,280.45	0.00	0.001	0.008	0.00	0.00

Pond Detailed Report: Pond

Elevation-Volume-Flow Table

Elevation (ft)	Outflow (ft ³ /s)	Storage (ac-ft)	Area (acres)	Infiltration (ft ³ /s)	Flow (Total) (ft ³ /s)
6,280.46	0.00	0.002	0.008	0.00	0.00
6,280.47	0.00	0.002	0.008	0.00	0.00
6,280.48	0.00	0.002	0.008	0.00	0.00
6,280.49	0.00	0.002	0.009	0.00	0.00
6,280.50	0.00	0.002	0.009	0.00	0.00
6,280.51	0.00	0.002	0.009	0.00	0.00
6,280.52	0.00	0.002	0.010	0.00	0.00
6,280.53	0.00	0.002	0.010	0.00	0.00
6,280.54	0.00	0.002	0.010	0.00	0.00
6,280.55	0.00	0.002	0.010	0.00	0.00
6,280.56	0.00	0.002	0.011	0.00	0.00
6,280.57	0.00	0.003	0.011	0.00	0.00
6,280.58	0.00	0.003	0.011	0.00	0.00
6,280.59	0.00	0.003	0.012	0.00	0.00
6,280.60	0.00	0.003	0.012	0.00	0.00
6,280.61	0.00	0.003	0.012	0.00	0.00
6,280.62	0.00	0.003	0.013	0.00	0.00
6,280.63	0.00	0.003	0.013	0.00	0.00
6,280.64	0.00	0.003	0.013	0.00	0.00
6,280.65	0.00	0.004	0.014	0.00	0.00
6,280.66	0.00	0.004	0.014	0.00	0.00
6,280.67	0.00	0.004	0.014	0.00	0.00
6,280.68	0.00	0.004	0.015	0.00	0.00
6,280.69	0.00	0.004	0.015	0.00	0.00
6,280.70	0.00	0.004	0.016	0.00	0.00
6,280.71	0.00	0.004	0.016	0.00	0.00
6,280.72	0.00	0.005	0.016	0.00	0.00
6,280.73	0.00	0.005	0.017	0.00	0.00
6,280.74	0.00	0.005	0.017	0.00	0.00
6,280.75	0.00	0.005	0.017	0.00	0.00
6,280.76	0.00	0.005	0.018	0.00	0.00
6,280.77	0.00	0.005	0.018	0.00	0.00
6,280.78	0.00	0.006	0.019	0.00	0.00
6,280.79	0.00	0.006	0.019	0.00	0.00
6,280.80	0.00	0.006	0.020	0.00	0.00
6,280.81	0.00	0.006	0.020	0.00	0.00
6,280.82	0.00	0.006	0.020	0.00	0.00
6,280.83	0.00	0.007	0.021	0.00	0.00
6,280.84	0.00	0.007	0.021	0.00	0.00
6,280.85	0.00	0.007	0.022	0.00	0.00
6,280.86	0.00	0.007	0.022	0.00	0.00
6,280.87	0.00	0.008	0.023	0.00	0.00
6,280.88	0.00	0.008	0.023	0.00	0.00
6,280.89	0.00	0.008	0.024	0.00	0.00

Pond Detailed Report: Pond

Elevation-Volume-Flow Table

Elevation (ft)	Outflow (ft ³ /s)	Storage (ac-ft)	Area (acres)	Infiltration (ft ³ /s)	Flow (Total) (ft ³ /s)
6,280.90	0.00	0.008	0.024	0.00	0.00
6,280.91	0.00	0.008	0.024	0.00	0.00
6,280.92	0.00	0.009	0.025	0.00	0.00
6,280.93	0.00	0.009	0.025	0.00	0.00
6,280.94	0.00	0.009	0.026	0.00	0.00
6,280.95	0.00	0.009	0.026	0.00	0.00
6,280.96	0.00	0.010	0.027	0.00	0.00
6,280.97	0.00	0.010	0.027	0.00	0.00
6,280.98	0.00	0.010	0.028	0.00	0.00
6,280.99	0.00	0.011	0.028	0.00	0.00
6,281.00	0.00	0.011	0.029	0.00	0.00
6,281.01	0.00	0.011	0.029	0.00	0.00
6,281.02	0.00	0.011	0.030	0.00	0.00
6,281.03	0.00	0.012	0.030	0.00	0.00
6,281.04	0.00	0.012	0.031	0.00	0.00
6,281.05	0.00	0.012	0.032	0.00	0.00
6,281.06	0.00	0.013	0.032	0.00	0.00
6,281.07	0.00	0.013	0.033	0.00	0.00
6,281.08	0.00	0.013	0.033	0.00	0.00
6,281.09	0.00	0.014	0.034	0.00	0.00
6,281.10	0.00	0.014	0.034	0.00	0.00
6,281.11	0.00	0.014	0.035	0.00	0.00
6,281.12	0.00	0.015	0.035	0.00	0.00
6,281.13	0.00	0.015	0.036	0.00	0.00
6,281.14	0.00	0.015	0.037	0.00	0.00
6,281.15	0.00	0.016	0.037	0.00	0.00
6,281.16	0.00	0.016	0.038	0.00	0.00
6,281.17	0.00	0.017	0.038	0.00	0.00
6,281.18	0.00	0.017	0.039	0.00	0.00
6,281.19	0.00	0.017	0.039	0.00	0.00
6,281.20	0.00	0.018	0.040	0.00	0.00
6,281.21	0.00	0.018	0.041	0.00	0.00
6,281.22	0.00	0.019	0.041	0.00	0.00
6,281.23	0.00	0.019	0.042	0.00	0.00
6,281.24	0.00	0.019	0.043	0.00	0.00
6,281.25	0.00	0.020	0.043	0.00	0.00
6,281.26	0.00	0.020	0.044	0.00	0.00
6,281.27	0.00	0.021	0.044	0.00	0.00
6,281.28	0.00	0.021	0.045	0.00	0.00
6,281.29	0.00	0.022	0.046	0.00	0.00
6,281.30	0.00	0.022	0.046	0.00	0.00
6,281.31	0.00	0.022	0.047	0.00	0.00
6,281.32	0.00	0.023	0.048	0.00	0.00
6,281.33	0.00	0.023	0.048	0.00	0.00

Pond Detailed Report: Pond

Elevation-Volume-Flow Table

Elevation (ft)	Outflow (ft ³ /s)	Storage (ac-ft)	Area (acres)	Infiltration (ft ³ /s)	Flow (Total) (ft ³ /s)
6,281.34	0.00	0.024	0.049	0.00	0.00
6,281.35	0.00	0.024	0.050	0.00	0.00
6,281.36	0.00	0.025	0.050	0.00	0.00
6,281.37	0.00	0.025	0.051	0.00	0.00
6,281.38	0.00	0.026	0.052	0.00	0.00
6,281.39	0.00	0.026	0.052	0.00	0.00
6,281.40	0.00	0.027	0.053	0.00	0.00
6,281.41	0.00	0.028	0.054	0.00	0.00
6,281.42	0.00	0.028	0.054	0.00	0.00
6,281.43	0.00	0.029	0.055	0.00	0.00
6,281.44	0.00	0.029	0.056	0.00	0.00
6,281.45	0.00	0.030	0.057	0.00	0.00
6,281.46	0.00	0.030	0.057	0.00	0.00
6,281.47	0.00	0.031	0.058	0.00	0.00
6,281.48	0.00	0.031	0.059	0.00	0.00
6,281.49	0.00	0.032	0.059	0.00	0.00
6,281.50	0.00	0.033	0.060	0.00	0.00
6,281.51	0.00	0.033	0.061	0.00	0.00
6,281.52	0.00	0.034	0.062	0.00	0.00
6,281.53	0.00	0.034	0.062	0.00	0.00
6,281.54	0.00	0.035	0.063	0.00	0.00
6,281.55	0.00	0.036	0.064	0.00	0.00
6,281.56	0.00	0.036	0.065	0.00	0.00
6,281.57	0.00	0.037	0.066	0.00	0.00
6,281.58	0.00	0.038	0.066	0.00	0.00
6,281.59	0.00	0.038	0.067	0.00	0.00
6,281.60	0.00	0.039	0.068	0.00	0.00
6,281.61	0.00	0.040	0.069	0.00	0.00
6,281.62	0.00	0.040	0.069	0.00	0.00
6,281.63	0.00	0.041	0.070	0.00	0.00
6,281.64	0.00	0.042	0.071	0.00	0.00
6,281.65	0.00	0.043	0.072	0.00	0.00
6,281.66	0.00	0.043	0.073	0.00	0.00
6,281.67	0.00	0.044	0.073	0.00	0.00
6,281.68	0.00	0.045	0.074	0.00	0.00
6,281.69	0.00	0.045	0.075	0.00	0.00
6,281.70	0.00	0.046	0.076	0.00	0.00
6,281.71	0.00	0.047	0.077	0.00	0.00
6,281.72	0.00	0.048	0.078	0.00	0.00
6,281.73	0.00	0.049	0.078	0.00	0.00
6,281.74	0.00	0.049	0.079	0.00	0.00
6,281.75	0.00	0.050	0.080	0.00	0.00
6,281.76	0.00	0.051	0.081	0.00	0.00
6,281.77	0.00	0.052	0.082	0.00	0.00

Pond Detailed Report: Pond

Elevation-Volume-Flow Table

Elevation (ft)	Outflow (ft ³ /s)	Storage (ac-ft)	Area (acres)	Infiltration (ft ³ /s)	Flow (Total) (ft ³ /s)
6,281.78	0.00	0.053	0.083	0.00	0.00
6,281.79	0.00	0.053	0.084	0.00	0.00
6,281.80	0.00	0.054	0.084	0.00	0.00
6,281.81	0.00	0.055	0.085	0.00	0.00
6,281.82	0.00	0.056	0.086	0.00	0.00
6,281.83	0.00	0.057	0.087	0.00	0.00
6,281.84	0.00	0.058	0.088	0.00	0.00
6,281.85	0.00	0.059	0.089	0.00	0.00
6,281.86	0.00	0.059	0.090	0.00	0.00
6,281.87	0.00	0.060	0.091	0.00	0.00
6,281.88	0.00	0.061	0.092	0.00	0.00
6,281.89	0.00	0.062	0.093	0.00	0.00
6,281.90	0.00	0.063	0.093	0.00	0.00
6,281.91	0.00	0.064	0.094	0.00	0.00
6,281.92	0.00	0.065	0.095	0.00	0.00
6,281.93	0.00	0.066	0.096	0.00	0.00
6,281.94	0.00	0.067	0.097	0.00	0.00
6,281.95	0.00	0.068	0.098	0.00	0.00
6,281.96	0.00	0.069	0.099	0.00	0.00
6,281.97	0.00	0.070	0.100	0.00	0.00
6,281.98	0.00	0.071	0.101	0.00	0.00
6,281.99	0.00	0.072	0.102	0.00	0.00
6,282.00	0.00	0.073	0.103	0.00	0.00
6,282.01	0.00	0.074	0.103	0.00	0.00
6,282.02	0.00	0.075	0.103	0.00	0.00
6,282.03	0.00	0.076	0.104	0.00	0.00
6,282.04	0.00	0.077	0.104	0.00	0.00
6,282.05	0.01	0.078	0.104	0.00	0.01
6,282.06	0.01	0.079	0.105	0.00	0.01
6,282.07	0.01	0.080	0.105	0.00	0.01
6,282.08	0.02	0.081	0.105	0.00	0.02
6,282.09	0.02	0.082	0.105	0.00	0.02
6,282.10	0.03	0.083	0.106	0.00	0.03
6,282.11	0.04	0.084	0.106	0.00	0.04
6,282.12	0.04	0.086	0.106	0.00	0.04
6,282.13	0.05	0.087	0.107	0.00	0.05
6,282.14	0.06	0.088	0.107	0.00	0.06
6,282.15	0.06	0.089	0.107	0.00	0.06
6,282.16	0.07	0.090	0.108	0.00	0.07
6,282.17	0.08	0.091	0.108	0.00	0.08
6,282.18	0.09	0.092	0.108	0.00	0.09
6,282.19	0.10	0.093	0.108	0.00	0.10
6,282.20	0.11	0.094	0.109	0.00	0.11
6,282.21	0.13	0.095	0.109	0.00	0.13

Pond Detailed Report: Pond

Elevation-Volume-Flow Table

Elevation (ft)	Outflow (ft ³ /s)	Storage (ac-ft)	Area (acres)	Infiltration (ft ³ /s)	Flow (Total) (ft ³ /s)
6,282.22	0.14	0.096	0.109	0.00	0.14
6,282.23	0.15	0.097	0.110	0.00	0.15
6,282.24	0.16	0.098	0.110	0.00	0.16
6,282.25	0.17	0.100	0.110	0.00	0.17
6,282.26	0.19	0.101	0.110	0.00	0.19
6,282.27	0.20	0.102	0.111	0.00	0.20
6,282.28	0.22	0.103	0.111	0.00	0.22
6,282.29	0.23	0.104	0.111	0.00	0.23
6,282.30	0.24	0.105	0.112	0.00	0.24
6,282.31	0.26	0.106	0.112	0.00	0.26
6,282.32	0.28	0.107	0.112	0.00	0.28
6,282.33	0.29	0.108	0.113	0.00	0.29
6,282.34	0.31	0.110	0.113	0.00	0.31
6,282.35	0.33	0.111	0.113	0.00	0.33
6,282.36	0.34	0.112	0.113	0.00	0.34
6,282.37	0.36	0.113	0.114	0.00	0.36
6,282.38	0.38	0.114	0.114	0.00	0.38
6,282.39	0.40	0.115	0.114	0.00	0.40
6,282.40	0.42	0.116	0.115	0.00	0.42
6,282.41	0.44	0.118	0.115	0.00	0.44
6,282.42	0.46	0.119	0.115	0.00	0.46
6,282.43	0.48	0.120	0.116	0.00	0.48
6,282.44	0.50	0.121	0.116	0.00	0.50
6,282.45	0.52	0.122	0.116	0.00	0.52
6,282.46	0.54	0.123	0.116	0.00	0.54
6,282.47	0.56	0.125	0.117	0.00	0.56
6,282.48	0.59	0.126	0.117	0.00	0.59
6,282.49	0.61	0.127	0.117	0.00	0.61
6,282.50	0.63	0.128	0.118	0.00	0.63
6,282.51	0.65	0.129	0.118	0.00	0.65
6,282.52	0.67	0.130	0.118	0.00	0.67
6,282.53	0.70	0.132	0.119	0.00	0.70
6,282.54	0.72	0.133	0.119	0.00	0.72
6,282.55	0.74	0.134	0.119	0.00	0.74
6,282.56	0.77	0.135	0.120	0.00	0.77
6,282.57	0.79	0.136	0.120	0.00	0.79
6,282.58	0.82	0.138	0.120	0.00	0.82
6,282.59	0.84	0.139	0.120	0.00	0.84
6,282.60	0.87	0.140	0.121	0.00	0.87
6,282.61	0.89	0.141	0.121	0.00	0.89
6,282.62	0.92	0.142	0.121	0.00	0.92
6,282.63	0.94	0.144	0.122	0.00	0.94
6,282.64	0.97	0.145	0.122	0.00	0.97
6,282.65	0.99	0.146	0.122	0.00	0.99

Pond Detailed Report: Pond

Elevation-Volume-Flow Table

Elevation (ft)	Outflow (ft ³ /s)	Storage (ac-ft)	Area (acres)	Infiltration (ft ³ /s)	Flow (Total) (ft ³ /s)
6,282.66	1.02	0.147	0.123	0.00	1.02
6,282.67	1.04	0.149	0.123	0.00	1.04
6,282.68	1.07	0.150	0.123	0.00	1.07
6,282.69	1.10	0.151	0.124	0.00	1.10
6,282.70	1.12	0.152	0.124	0.00	1.12
6,282.71	1.15	0.153	0.124	0.00	1.15
6,282.72	1.18	0.155	0.124	0.00	1.18
6,282.73	1.20	0.156	0.125	0.00	1.20
6,282.74	1.23	0.157	0.125	0.00	1.23
6,282.75	1.56	0.158	0.125	0.00	1.56
6,282.76	1.58	0.160	0.126	0.00	1.58
6,282.77	1.60	0.161	0.126	0.00	1.60
6,282.78	1.62	0.162	0.126	0.00	1.62
6,282.79	1.64	0.163	0.127	0.00	1.64
6,282.80	1.66	0.165	0.127	0.00	1.66
6,282.81	1.68	0.166	0.127	0.00	1.68
6,282.82	1.70	0.167	0.128	0.00	1.70
6,282.83	1.72	0.169	0.128	0.00	1.72
6,282.84	1.74	0.170	0.128	0.00	1.74
6,282.85	1.76	0.171	0.129	0.00	1.76
6,282.86	1.78	0.172	0.129	0.00	1.78
6,282.87	1.80	0.174	0.129	0.00	1.80
6,282.88	1.81	0.175	0.130	0.00	1.81
6,282.89	1.83	0.176	0.130	0.00	1.83
6,282.90	1.85	0.178	0.130	0.00	1.85
6,282.91	1.87	0.179	0.131	0.00	1.87
6,282.92	1.88	0.180	0.131	0.00	1.88
6,282.93	1.90	0.182	0.131	0.00	1.90
6,282.94	1.92	0.183	0.131	0.00	1.92
6,282.95	1.93	0.184	0.132	0.00	1.93
6,282.96	1.95	0.185	0.132	0.00	1.95
6,282.97	1.97	0.187	0.132	0.00	1.97
6,282.98	1.98	0.188	0.133	0.00	1.98
6,282.99	2.00	0.189	0.133	0.00	2.00
6,283.00	2.02	0.191	0.133	0.00	2.02
6,283.01	2.03	0.192	0.134	0.00	2.03
6,283.02	2.05	0.193	0.134	0.00	2.05
6,283.03	2.07	0.195	0.134	0.00	2.07
6,283.04	2.09	0.196	0.135	0.00	2.09
6,283.05	2.11	0.198	0.135	0.00	2.11
6,283.06	2.14	0.199	0.135	0.00	2.14
6,283.07	2.16	0.200	0.136	0.00	2.16
6,283.08	2.19	0.202	0.136	0.00	2.19
6,283.09	2.21	0.203	0.136	0.00	2.21

Pond Detailed Report: Pond

Elevation-Volume-Flow Table

Elevation (ft)	Outflow (ft ³ /s)	Storage (ac-ft)	Area (acres)	Infiltration (ft ³ /s)	Flow (Total) (ft ³ /s)
6,283.10	2.24	0.204	0.136	0.00	2.24
6,283.11	2.27	0.206	0.137	0.00	2.27
6,283.12	2.30	0.207	0.137	0.00	2.30
6,283.13	2.33	0.208	0.137	0.00	2.33
6,283.14	2.36	0.210	0.138	0.00	2.36
6,283.15	2.40	0.211	0.138	0.00	2.40
6,283.16	2.43	0.213	0.138	0.00	2.43
6,283.17	2.47	0.214	0.139	0.00	2.47
6,283.18	2.51	0.215	0.139	0.00	2.51
6,283.19	2.54	0.217	0.139	0.00	2.54
6,283.20	2.58	0.218	0.139	0.00	2.58
6,283.21	2.62	0.219	0.140	0.00	2.62
6,283.22	2.66	0.221	0.140	0.00	2.66
6,283.23	2.71	0.222	0.140	0.00	2.71
6,283.24	2.75	0.224	0.141	0.00	2.75
6,283.25	2.80	0.225	0.141	0.00	2.80
6,283.26	2.84	0.227	0.141	0.00	2.84
6,283.27	2.89	0.228	0.142	0.00	2.89
6,283.28	2.94	0.229	0.142	0.00	2.94
6,283.29	2.98	0.231	0.142	0.00	2.98
6,283.30	3.04	0.232	0.143	0.00	3.04
6,283.31	3.08	0.234	0.143	0.00	3.08
6,283.32	3.14	0.235	0.143	0.00	3.14
6,283.33	3.19	0.236	0.144	0.00	3.19
6,283.34	3.25	0.238	0.144	0.00	3.25
6,283.35	3.30	0.239	0.144	0.00	3.30
6,283.36	3.36	0.241	0.144	0.00	3.36
6,283.37	3.42	0.242	0.145	0.00	3.42
6,283.38	3.47	0.244	0.145	0.00	3.47
6,283.39	3.53	0.245	0.145	0.00	3.53
6,283.40	3.59	0.247	0.146	0.00	3.59
6,283.41	3.65	0.248	0.146	0.00	3.65
6,283.42	3.71	0.250	0.146	0.00	3.71
6,283.43	3.78	0.251	0.147	0.00	3.78
6,283.44	3.83	0.252	0.147	0.00	3.83
6,283.45	3.90	0.254	0.147	0.00	3.90
6,283.46	3.96	0.255	0.148	0.00	3.96
6,283.47	4.03	0.257	0.148	0.00	4.03
6,283.48	4.10	0.258	0.148	0.00	4.10
6,283.49	4.17	0.260	0.149	0.00	4.17
6,283.50	4.23	0.261	0.149	0.00	4.23
6,283.51	4.30	0.263	0.149	0.00	4.30
6,283.52	4.38	0.264	0.150	0.00	4.38
6,283.53	4.44	0.266	0.150	0.00	4.44

Pond Detailed Report: Pond

Elevation-Volume-Flow Table

Elevation (ft)	Outflow (ft ³ /s)	Storage (ac-ft)	Area (acres)	Infiltration (ft ³ /s)	Flow (Total) (ft ³ /s)
6,283.54	4.52	0.267	0.150	0.00	4.52
6,283.55	4.59	0.269	0.150	0.00	4.59
6,283.56	4.67	0.270	0.151	0.00	4.67
6,283.57	4.73	0.272	0.151	0.00	4.73
6,283.58	4.81	0.273	0.151	0.00	4.81
6,283.59	4.88	0.275	0.152	0.00	4.88
6,283.60	4.96	0.276	0.152	0.00	4.96
6,283.61	5.04	0.278	0.152	0.00	5.04
6,283.62	5.12	0.279	0.153	0.00	5.12
6,283.63	5.19	0.281	0.153	0.00	5.19
6,283.64	5.27	0.282	0.153	0.00	5.27
6,283.65	5.34	0.284	0.154	0.00	5.34
6,283.66	5.43	0.286	0.154	0.00	5.43
6,283.67	5.52	0.287	0.154	0.00	5.52
6,283.68	5.59	0.289	0.155	0.00	5.59
6,283.69	5.68	0.290	0.155	0.00	5.68
6,283.70	5.76	0.292	0.155	0.00	5.76
6,283.71	5.84	0.293	0.156	0.00	5.84
6,283.72	5.92	0.295	0.156	0.00	5.92
6,283.73	6.01	0.296	0.156	0.00	6.01
6,283.74	6.09	0.298	0.157	0.00	6.09
6,283.75	6.18	0.300	0.157	0.00	6.18
6,283.76	6.26	0.301	0.157	0.00	6.26
6,283.77	6.35	0.303	0.158	0.00	6.35
6,283.78	6.43	0.304	0.158	0.00	6.43
6,283.79	6.52	0.306	0.158	0.00	6.52
6,283.80	6.60	0.307	0.159	0.00	6.60
6,283.81	6.69	0.309	0.159	0.00	6.69
6,283.82	6.78	0.311	0.159	0.00	6.78
6,283.83	6.87	0.312	0.160	0.00	6.87
6,283.84	6.95	0.314	0.160	0.00	6.95
6,283.85	7.05	0.315	0.160	0.00	7.05
6,283.86	7.13	0.317	0.161	0.00	7.13
6,283.87	7.22	0.319	0.161	0.00	7.22
6,283.88	7.31	0.320	0.161	0.00	7.31
6,283.89	7.41	0.322	0.161	0.00	7.41
6,283.90	7.50	0.323	0.162	0.00	7.50
6,283.91	7.59	0.325	0.162	0.00	7.59
6,283.92	7.67	0.327	0.162	0.00	7.67
6,283.93	7.77	0.328	0.163	0.00	7.77
6,283.94	7.86	0.330	0.163	0.00	7.86
6,283.95	7.96	0.332	0.163	0.00	7.96
6,283.96	8.05	0.333	0.164	0.00	8.05
6,283.97	8.14	0.335	0.164	0.00	8.14

Pond Detailed Report: Pond

Elevation-Volume-Flow Table

Elevation (ft)	Outflow (ft ³ /s)	Storage (ac-ft)	Area (acres)	Infiltration (ft ³ /s)	Flow (Total) (ft ³ /s)
6,283.98	8.23	0.337	0.164	0.00	8.23
6,283.99	8.32	0.338	0.165	0.00	8.32
6,284.00	8.69	0.340	0.165	0.00	8.69
6,284.01	8.75	0.341	0.165	0.00	8.75
6,284.02	8.82	0.343	0.166	0.00	8.82
6,284.03	8.88	0.345	0.166	0.00	8.88
6,284.04	8.94	0.346	0.166	0.00	8.94
6,284.05	9.00	0.348	0.167	0.00	9.00
6,284.06	9.06	0.350	0.167	0.00	9.06
6,284.07	9.13	0.351	0.167	0.00	9.13
6,284.08	9.19	0.353	0.168	0.00	9.19
6,284.09	9.25	0.355	0.168	0.00	9.25
6,284.10	9.31	0.356	0.168	0.00	9.31
6,284.11	9.36	0.358	0.169	0.00	9.36
6,284.12	9.42	0.360	0.169	0.00	9.42
6,284.13	9.48	0.362	0.169	0.00	9.48
6,284.14	9.54	0.363	0.170	0.00	9.54
6,284.15	9.60	0.365	0.170	0.00	9.60
6,284.16	9.65	0.367	0.170	0.00	9.65
6,284.17	9.71	0.368	0.171	0.00	9.71
6,284.18	9.77	0.370	0.171	0.00	9.77
6,284.19	9.82	0.372	0.171	0.00	9.82
6,284.20	9.88	0.373	0.172	0.00	9.88
6,284.21	9.93	0.375	0.172	0.00	9.93
6,284.22	9.99	0.377	0.172	0.00	9.99
6,284.23	10.04	0.379	0.173	0.00	10.04
6,284.24	10.10	0.380	0.173	0.00	10.10
6,284.25	10.15	0.382	0.173	0.00	10.15
6,284.26	10.20	0.384	0.173	0.00	10.20
6,284.27	10.26	0.386	0.174	0.00	10.26
6,284.28	10.31	0.387	0.174	0.00	10.31
6,284.29	10.36	0.389	0.174	0.00	10.36
6,284.30	10.42	0.391	0.175	0.00	10.42
6,284.31	10.47	0.393	0.175	0.00	10.47
6,284.32	10.52	0.394	0.175	0.00	10.52
6,284.33	10.57	0.396	0.176	0.00	10.57
6,284.34	10.62	0.398	0.176	0.00	10.62
6,284.35	10.67	0.400	0.176	0.00	10.67
6,284.36	10.72	0.401	0.177	0.00	10.72
6,284.37	10.77	0.403	0.177	0.00	10.77
6,284.38	10.82	0.405	0.177	0.00	10.82
6,284.39	10.87	0.407	0.178	0.00	10.87
6,284.40	10.92	0.408	0.178	0.00	10.92
6,284.41	10.97	0.410	0.178	0.00	10.97

Pond Detailed Report: Pond

Elevation-Volume-Flow Table

Elevation (ft)	Outflow (ft ³ /s)	Storage (ac-ft)	Area (acres)	Infiltration (ft ³ /s)	Flow (Total) (ft ³ /s)
6,284.42	11.02	0.412	0.179	0.00	11.02
6,284.43	11.07	0.414	0.179	0.00	11.07
6,284.44	11.12	0.416	0.179	0.00	11.12
6,284.45	11.17	0.417	0.180	0.00	11.17
6,284.46	11.22	0.419	0.180	0.00	11.22
6,284.47	11.26	0.421	0.180	0.00	11.26
6,284.48	11.31	0.423	0.181	0.00	11.31
6,284.49	11.36	0.425	0.181	0.00	11.36
6,284.50	11.41	0.426	0.181	0.00	11.41
6,284.51	11.45	0.428	0.182	0.00	11.45
6,284.52	11.50	0.430	0.182	0.00	11.50
6,284.53	11.55	0.432	0.182	0.00	11.55
6,284.54	11.59	0.434	0.183	0.00	11.59
6,284.55	11.64	0.436	0.183	0.00	11.64
6,284.56	11.69	0.437	0.183	0.00	11.69
6,284.57	11.73	0.439	0.184	0.00	11.73
6,284.58	11.78	0.441	0.184	0.00	11.78
6,284.59	11.82	0.443	0.184	0.00	11.82
6,284.60	11.87	0.445	0.185	0.00	11.87
6,284.61	11.91	0.447	0.185	0.00	11.91
6,284.62	11.96	0.448	0.185	0.00	11.96
6,284.63	12.00	0.450	0.186	0.00	12.00
6,284.64	12.05	0.452	0.186	0.00	12.05
6,284.65	12.09	0.454	0.186	0.00	12.09
6,284.66	12.14	0.456	0.187	0.00	12.14
6,284.67	12.18	0.458	0.187	0.00	12.18
6,284.68	12.22	0.460	0.187	0.00	12.22
6,284.69	12.27	0.461	0.188	0.00	12.27
6,284.70	12.31	0.463	0.188	0.00	12.31
6,284.71	12.35	0.465	0.188	0.00	12.35
6,284.72	12.40	0.467	0.189	0.00	12.40
6,284.73	12.44	0.469	0.189	0.00	12.44
6,284.74	12.48	0.471	0.189	0.00	12.48
6,284.75	12.53	0.473	0.190	0.00	12.53
6,284.76	12.57	0.475	0.190	0.00	12.57
6,284.77	12.61	0.477	0.190	0.00	12.61
6,284.78	12.65	0.478	0.191	0.00	12.65
6,284.79	12.70	0.480	0.191	0.00	12.70
6,284.80	12.74	0.482	0.191	0.00	12.74
6,284.81	12.78	0.484	0.192	0.00	12.78
6,284.82	12.82	0.486	0.192	0.00	12.82
6,284.83	12.86	0.488	0.192	0.00	12.86
6,284.84	12.90	0.490	0.193	0.00	12.90
6,284.85	12.94	0.492	0.193	0.00	12.94

Pond Detailed Report: Pond

Elevation-Volume-Flow Table

Elevation (ft)	Outflow (ft ³ /s)	Storage (ac-ft)	Area (acres)	Infiltration (ft ³ /s)	Flow (Total) (ft ³ /s)
6,284.86	12.99	0.494	0.194	0.00	12.99
6,284.87	13.03	0.496	0.194	0.00	13.03
6,284.88	13.07	0.498	0.194	0.00	13.07
6,284.89	13.11	0.500	0.195	0.00	13.11
6,284.90	13.15	0.502	0.195	0.00	13.15
6,284.91	13.19	0.504	0.195	0.00	13.19
6,284.92	13.23	0.506	0.196	0.00	13.23
6,284.93	13.27	0.507	0.196	0.00	13.27
6,284.94	13.31	0.509	0.196	0.00	13.31
6,284.95	13.35	0.511	0.197	0.00	13.35
6,284.96	13.39	0.513	0.197	0.00	13.39
6,284.97	13.43	0.515	0.197	0.00	13.43
6,284.98	13.47	0.517	0.198	0.00	13.47
6,284.99	13.51	0.519	0.198	0.00	13.51
6,285.00	13.55	0.521	0.198	0.00	13.55
6,285.01	13.59	0.523	0.199	0.00	13.59
6,285.02	13.63	0.525	0.199	0.00	13.63
6,285.03	13.67	0.527	0.199	0.00	13.67
6,285.04	13.70	0.529	0.200	0.00	13.70
6,285.05	13.74	0.531	0.200	0.00	13.74
6,285.06	13.78	0.533	0.200	0.00	13.78
6,285.07	13.82	0.535	0.201	0.00	13.82
6,285.08	13.86	0.537	0.201	0.00	13.86
6,285.09	13.90	0.539	0.201	0.00	13.90
6,285.10	13.93	0.541	0.202	0.00	13.93
6,285.11	13.97	0.543	0.202	0.00	13.97
6,285.12	14.01	0.545	0.202	0.00	14.01
6,285.13	14.05	0.547	0.203	0.00	14.05
6,285.14	14.09	0.549	0.203	0.00	14.09
6,285.15	14.12	0.551	0.204	0.00	14.12
6,285.16	14.16	0.553	0.204	0.00	14.16
6,285.17	14.20	0.556	0.204	0.00	14.20
6,285.18	14.24	0.558	0.205	0.00	14.24
6,285.19	14.27	0.560	0.205	0.00	14.27
6,285.20	14.31	0.562	0.205	0.00	14.31
6,285.21	14.35	0.564	0.206	0.00	14.35
6,285.22	14.38	0.566	0.206	0.00	14.38
6,285.23	14.42	0.568	0.206	0.00	14.42
6,285.24	14.46	0.570	0.207	0.00	14.46
6,285.25	14.49	0.572	0.207	0.00	14.49
6,285.26	14.53	0.574	0.207	0.00	14.53
6,285.27	14.57	0.576	0.208	0.00	14.57
6,285.28	14.60	0.578	0.208	0.00	14.60
6,285.29	14.64	0.580	0.208	0.00	14.64

Pond Detailed Report: Pond

Elevation-Volume-Flow Table

Elevation (ft)	Outflow (ft ³ /s)	Storage (ac-ft)	Area (acres)	Infiltration (ft ³ /s)	Flow (Total) (ft ³ /s)
6,285.30	14.68	0.582	0.209	0.00	14.68
6,285.31	14.71	0.584	0.209	0.00	14.71
6,285.32	14.75	0.587	0.209	0.00	14.75
6,285.33	14.78	0.589	0.210	0.00	14.78
6,285.34	14.82	0.591	0.210	0.00	14.82
6,285.35	14.86	0.593	0.210	0.00	14.86
6,285.36	14.89	0.595	0.211	0.00	14.89
6,285.37	14.93	0.597	0.211	0.00	14.93
6,285.38	14.96	0.599	0.212	0.00	14.96
6,285.39	15.00	0.601	0.212	0.00	15.00
6,285.40	15.03	0.603	0.212	0.00	15.03
6,285.41	15.07	0.606	0.213	0.00	15.07
6,285.42	15.10	0.608	0.213	0.00	15.10
6,285.43	15.14	0.610	0.213	0.00	15.14
6,285.44	15.17	0.612	0.214	0.00	15.17
6,285.45	15.21	0.614	0.214	0.00	15.21
6,285.46	15.24	0.616	0.214	0.00	15.24
6,285.47	15.28	0.618	0.215	0.00	15.28
6,285.48	15.31	0.620	0.215	0.00	15.31
6,285.49	15.35	0.623	0.215	0.00	15.35
6,285.50	15.38	0.625	0.216	0.00	15.38
6,285.51	15.42	0.627	0.216	0.00	15.42
6,285.52	15.45	0.629	0.217	0.00	15.45
6,285.53	15.48	0.631	0.217	0.00	15.48
6,285.54	15.52	0.633	0.217	0.00	15.52
6,285.55	15.55	0.636	0.218	0.00	15.55
6,285.56	15.59	0.638	0.218	0.00	15.59
6,285.57	15.62	0.640	0.218	0.00	15.62
6,285.58	15.65	0.642	0.219	0.00	15.65
6,285.59	15.69	0.644	0.219	0.00	15.69
6,285.60	15.72	0.647	0.219	0.00	15.72
6,285.61	15.75	0.649	0.220	0.00	15.75
6,285.62	15.79	0.651	0.220	0.00	15.79
6,285.63	15.82	0.653	0.220	0.00	15.82
6,285.64	15.85	0.655	0.221	0.00	15.85
6,285.65	15.89	0.658	0.221	0.00	15.89
6,285.66	15.92	0.660	0.222	0.00	15.92
6,285.67	15.95	0.662	0.222	0.00	15.95
6,285.68	15.99	0.664	0.222	0.00	15.99
6,285.69	16.02	0.666	0.223	0.00	16.02
6,285.70	16.05	0.669	0.223	0.00	16.05
6,285.71	16.09	0.671	0.223	0.00	16.09
6,285.72	16.12	0.673	0.224	0.00	16.12
6,285.73	16.15	0.675	0.224	0.00	16.15

Pond Detailed Report: Pond

Elevation-Volume-Flow Table

Elevation (ft)	Outflow (ft ³ /s)	Storage (ac-ft)	Area (acres)	Infiltration (ft ³ /s)	Flow (Total) (ft ³ /s)
6,285.74	16.18	0.678	0.224	0.00	16.18
6,285.75	16.22	0.680	0.225	0.00	16.22
6,285.76	16.25	0.682	0.225	0.00	16.25
6,285.77	16.28	0.684	0.226	0.00	16.28
6,285.78	16.31	0.687	0.226	0.00	16.31
6,285.79	16.35	0.689	0.226	0.00	16.35
6,285.80	16.38	0.691	0.227	0.00	16.38
6,285.81	16.41	0.693	0.227	0.00	16.41
6,285.82	16.44	0.696	0.227	0.00	16.44
6,285.83	16.48	0.698	0.228	0.00	16.48
6,285.84	16.51	0.700	0.228	0.00	16.51
6,285.85	16.54	0.703	0.228	0.00	16.54
6,285.86	16.57	0.705	0.229	0.00	16.57
6,285.87	16.60	0.707	0.229	0.00	16.60
6,285.88	16.63	0.709	0.230	0.00	16.63
6,285.89	16.67	0.712	0.230	0.00	16.67
6,285.90	16.70	0.714	0.230	0.00	16.70
6,285.91	16.73	0.716	0.231	0.00	16.73
6,285.92	16.76	0.719	0.231	0.00	16.76
6,285.93	16.79	0.721	0.231	0.00	16.79
6,285.94	16.82	0.723	0.232	0.00	16.82
6,285.95	16.86	0.726	0.232	0.00	16.86
6,285.96	16.89	0.728	0.233	0.00	16.89
6,285.97	16.92	0.730	0.233	0.00	16.92
6,285.98	16.95	0.733	0.233	0.00	16.95
6,285.99	16.98	0.735	0.234	0.00	16.98
6,286.00	17.01	0.737	0.234	0.00	17.01
2S/t + O (ft ³ /s)					
0.00					
0.00					
0.00					
0.01					
0.01					
0.01					
0.02					
0.02					
0.03					
0.03					
0.04					
0.04					
0.05					
0.05					
0.06					

Pond Detailed Report: Pond

Elevation-Volume-Flow Table

2S/t + O (ft ³ /s)
0.07
0.08
0.09
0.10
0.11
0.12
0.13
0.15
0.16
0.17
0.19
0.21
0.22
0.24
0.26
0.28
0.30
0.32
0.34
0.37
0.39
0.42
0.44
0.47
0.50
0.53
0.56
0.59
0.63
0.66
0.70
0.74
0.77
0.81
0.85
0.90
0.94
0.99
1.03
1.08
1.13
1.18
1.24
1.29

Pond Detailed Report: Pond

Elevation-Volume-Flow Table

2S/t + O (ft ³ /s)
1.35
1.40
1.46
1.52
1.58
1.65
1.71
1.78
1.85
1.92
1.99
2.07
2.14
2.22
2.30
2.38
2.47
2.55
2.64
2.73
2.82
2.92
3.01
3.11
3.21
3.31
3.42
3.52
3.63
3.74
3.85
3.97
4.09
4.21
4.33
4.45
4.58
4.71
4.84
4.97
5.11
5.25
5.39
5.53

Pond Detailed Report: Pond

Elevation-Volume-Flow Table

2S/t + O (ft ³ /s)
5.68
5.83
5.98
6.13
6.29
6.45
6.61
6.77
6.94
7.11
7.28
7.46
7.64
7.82
8.00
8.19
8.38
8.57
8.76
8.96
9.16
9.37
9.58
9.79
10.00
10.22
10.44
10.66
10.88
11.11
11.34
11.58
11.82
12.06
12.31
12.55
12.81
13.06
13.32
13.58
13.85
14.11
14.39
14.66

Pond Detailed Report: Pond

Elevation-Volume-Flow Table

2S/t + O (ft ³ /s)
14.94
15.22
15.51
15.80
16.09
16.39
16.69
16.99
17.30
17.61
17.93
18.25
18.57
18.90
19.23
19.56
19.90
20.24
20.59
20.94
21.29
21.65
22.01
22.37
22.74
23.12
23.50
23.88
24.26
24.65
25.05
25.45
25.85
26.25
26.67
27.08
27.50
27.92
28.35
28.79
29.22
29.66
30.11
30.56

Pond Detailed Report: Pond

Elevation-Volume-Flow Table

2S/t + O (ft ³ /s)
31.01
31.47
31.94
32.40
32.88
33.35
33.84
34.32
34.81
35.31
35.81
36.31
36.81
37.32
37.83
38.33
38.84
39.36
39.87
40.39
40.91
41.43
41.95
42.48
43.00
43.53
44.06
44.59
45.13
45.66
46.20
46.74
47.28
47.83
48.37
48.92
49.47
50.02
50.57
51.13
51.68
52.24
52.80
53.37

Pond Detailed Report: Pond

Elevation-Volume-Flow Table

2S/t + O (ft ³ /s)
53.93
54.50
55.06
55.63
56.21
56.78
57.35
57.93
58.51
59.09
59.67
60.26
60.84
61.43
62.02
62.61
63.20
63.80
64.39
64.99
65.59
66.19
66.80
67.40
68.01
68.62
69.23
69.84
70.45
71.07
71.69
72.30
72.92
73.55
74.17
74.79
75.42
76.05
76.68
77.31
78.25
78.88
79.51
80.14

Pond Detailed Report: Pond

Elevation-Volume-Flow Table

2S/t + O (ft ³ /s)
80.77
81.40
82.04
82.68
83.31
83.95
84.59
85.23
85.88
86.52
87.17
87.81
88.46
89.11
89.76
90.42
91.07
91.73
92.38
93.04
93.70
94.36
95.03
95.69
96.36
97.03
97.71
98.38
99.06
99.74
100.43
101.12
101.81
102.50
103.19
103.89
104.59
105.29
106.00
106.71
107.42
108.14
108.85
109.57

Pond Detailed Report: Pond

Elevation-Volume-Flow Table

2S/t + O (ft ³ /s)
110.30
111.02
111.74
112.47
113.21
113.94
114.67
115.42
116.15
116.90
117.65
118.40
119.15
119.91
120.66
121.42
122.18
122.95
123.71
124.48
125.26
126.02
126.80
127.58
128.36
129.15
129.93
130.72
131.51
132.30
133.09
133.90
134.70
135.50
136.30
137.11
137.91
138.72
139.55
140.36
141.18
141.99
142.81
143.64

Pond Detailed Report: Pond

Elevation-Volume-Flow Table

2S/t + O (ft ³ /s)
144.47
145.29
146.13
146.97
147.79
148.63
149.47
150.31
151.16
152.00
152.85
153.70
154.55
155.40
156.25
157.12
157.98
158.83
159.70
160.56
161.43
162.30
163.18
164.05
164.92
165.79
166.68
167.56
168.45
169.33
170.21
171.10
171.98
173.15
174.02
174.88
175.75
176.61
177.48
178.35
179.22
180.09
180.97
181.84

Pond Detailed Report: Pond

Elevation-Volume-Flow Table

2S/t + O (ft ³ /s)
182.71
183.59
184.47
185.34
186.22
187.10
187.99
188.87
189.75
190.64
191.52
192.41
193.30
194.19
195.08
195.97
196.87
197.76
198.66
199.56
200.45
201.35
202.26
203.16
204.06
204.97
205.87
206.78
207.69
208.60
209.51
210.43
211.34
212.26
213.18
214.09
215.01
215.94
216.86
217.78
218.71
219.64
220.56
221.49

Pond Detailed Report: Pond

Elevation-Volume-Flow Table

2S/t + O (ft ³ /s)
222.43
223.36
224.29
225.23
226.17
227.10
228.04
228.99
229.93
230.87
231.82
232.77
233.71
234.66
235.62
236.57
237.52
238.48
239.44
240.39
241.36
242.32
243.28
244.25
245.21
246.18
247.15
248.12
249.09
250.07
251.04
252.02
253.00
253.98
254.96
255.94
256.93
257.91
258.90
259.89
260.88
261.87
262.87
263.86

Pond Detailed Report: Pond

Elevation-Volume-Flow Table

2S/t + O (ft ³ /s)
264.86
265.86
266.86
267.86
268.86
269.87
270.87
271.88
272.89
273.90
274.91
275.93
276.94
277.96
278.98
280.00
281.02
282.04
283.07
284.09
285.12
286.15
287.18
288.22
289.25
290.29
291.32
292.36
293.40
294.45
295.49
296.54
297.58
298.63
299.68
300.73
301.79
302.84
303.90
304.96
306.02
307.08
308.14
309.21

Pond Detailed Report: Pond

Elevation-Volume-Flow Table

2S/t + O (ft ³ /s)
310.27
311.34
312.41
313.48
314.56
315.63
316.71
317.79
318.87
319.95
321.03
322.12
323.20
324.29
325.38
326.47
327.56
328.66
329.75
330.85
331.95
333.05
334.16
335.26
336.37
337.47
338.58
339.70
340.81
341.92
343.04
344.16
345.28
346.40
347.52
348.65
349.77
350.90
352.03
353.16
354.30
355.43
356.57
357.71

