

MERCHANTS METALS COLORBOND I

Color Coated Chain Link Fence System

Industrial/Commercial
Specification Projects



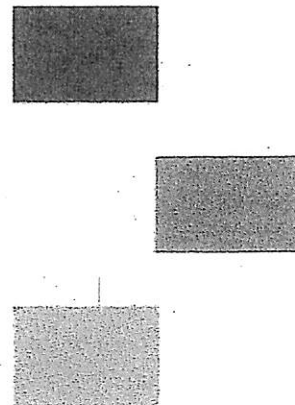
FABRIC • FRAMEWORK • FITTINGS • GATES

Complete Color Systems are available through your Merchants Metals Authorized Dealer or distributor. The added advantage of Merchants Metals warranties guarantees you a quality system of lasting beauty and strength.

- Choose from 3 complete matching color systems
- Won't chip, peel or fade - never needs painting
- Offers double protection over galvanized
- Durable and long lasting - maintenance free
- Available in Class 2a and Class 2b meeting ASTM specifications.

Color Coated Chain Link Fence System Industrial/Commercial Specification Projects

Dependable and rugged for long-lasting protection, Colorbond I systems are specified for highways and bridges, heavy industry, high security, state and federal agencies, power plants, and severe marine installations. Customize this system with matching fabric that is extruded and bonded or fused and bonded with framework meeting the strict specification Grade B or Schedule 40 of the Federal Government. This system meets or exceeds ASTM specifications F668, F934, F1043, D1499, Federal RR-F-191, AASHTO-M181 and other state specifications. Available in three (3) color variations to blend with your environmental requirements - black, brown and green.



Merchants Metals Color Systems are available in a wide range of wire and mesh sizes, as well as various heights and colors.

I. FABRIC

COLOR SPECIFICATIONS

Fabric furnished with Merchants' PVC Color Systems is under strict quality control. The PVC coated fabric is available in black, brown and green. Other colors available by quotation.

COATING SPECIFICATIONS

This product meets ASTM F-668 specifications for class 2a and class 2b PVC coating.

Class 2a - PVC coating extruded and bonded over zinc-coated steel wire.

Class 2b - PVC coating fused and adhered to zinc-coated steel wire.

DIMENSIONAL SPECIFICATIONS

ASTM specifications stipulate minimum core wire diameters and minimum PVC coating thicknesses. Merchants color fabric meets these standards when specified. PVC coated fabrics are commonly available in 2" mesh sizes, with 1 1/2" for tennis court applications. Small mesh sizes of 3/4", 1", 1 1/4", 1" and 1 1/2" are available on special order for high security applications.

DOUBLE PROTECTION

With PVC vinyl coated fabric, you are assured of a double coating of protection. Before the wire is processed through the vinyl coating line, it must first be coated with zinc by either the hot dip or electrolytic process. The finished color vinyl material is then extruded or fused onto the galvanized surface, giving the fence a double coating of protection along with the lasting beauty of color.

II. FRAMEWORK

Coated framework, in accordance with F1043, is available for all residential, commercial and industrial applications for line posts, end posts, brace rails, top rails and gate frames in standard colors of black, brown and green. Coated framework is manufactured with a zinc coating prior to the application of any color coating. Color coatings are available in either a minimum of 10 mil PVC polymer or a minimum 3 mil polyester coating depending on the type of manufacturing process.

III. FITTINGS

Merchants offers a full line of color fittings to complete the job. Fittings are color coated in-house and therefore a match between fabric and fittings is attainable. In accordance with ASTM specifications, all steel fittings are hot dip galvanized prior to color coating.

IV. GATES AND HARDWARE

To complete your color coated fence project, all residential, commercial and industrial gates are available in matching colors.

DISTRIBUTED BY:

Merchants Metals Color Systems are also available in Naturelink for residential/light commercial projects and Colorbond II for commercial/recreational projects.



Merchants Metals[®]

the first name in fence solutions

866.888.5611

www.merchantsmetals.com

An Oldcastle Company



Oldcastle[®]

**CONSTRUCTION SPECIFICATION FOR CHAIN LINK FENCE, INDUSTRIAL, COLOR
UTILIZING AMERISTAR® PERMACOAT® PC-40™ FENCE PIPE**

PART 1 - GENERAL

1.01 WORK INCLUDED

The contractor shall provide all labor, materials and appurtenances necessary for installation of the color chain link fencing system defined herein at (specify project site).

1.02 RELATED WORK

Section 02500 - Paving and Surfacing
Section 03300 - Cast-In-Place Concrete
Section 04200 - Unit Masonry

1.03 SYSTEM DESCRIPTION

The contractor shall supply a total color chain link fencing system of the design, style and strength defined herein. The system shall include all components (i.e., framework, chain link fabric, gates and fittings) required.

1.04 QUALITY ASSURANCE

The contractor shall provide laborers and supervisors who are thoroughly familiar with the type of construction involved and materials and techniques specified.

1.05 REFERENCES

A. American Society for Testing and Materials (ASTM) Standards: A90/A90M - Test Method for Weight (Mass) of Coating on Iron and Steel Articles with Zinc or Zinc-Alloy Coatings. A653/A653M - Specification for Steel Sheet, Zinc-Coated (Galvanized) or Zinc-Iron Alloy-Coated (Galvannealed) by the Hot-Dip Process. A924/A924M - Specification for General Requirements for Steel Sheet, Metallic-Coated by the Hot-Dip Process. B6 - Specification for Zinc. B117 - Practice for Operating Salt Spray (Fog) Apparatus. D1499 - Practice for Operating Light- and Water-Exposure Apparatus (Carbon-Arc Type) for Exposure of Plastics. D3359 - Test Methods for Measuring Adhesion by Tape Test. E8/E8M - Test Methods for Tension Testing of Metallic Materials. F567 - Practice for Installation of Chain-Link Fence. F626 - Specification for Fence Fittings. F668 - Specification for Poly (Vinyl Chloride) (PVC)-Coated Steel Chain-Link Fence Fabric. F900 - Specification for Industrial and Commercial Swing Gates. F934 - Specification for Standard Colors for Polymer-Coated Chain Link Fence Materials. F969 - Practice for Construction of Chain-Link Tennis Court Fence. F1043 - Specification for Strength and Protective Coatings on Metal Industrial Chain Link Fence Framework. F1184 - Specification for Industrial and Commercial Horizontal Slide Gates.

B. American Association of State Highway and Transportation Officials (AASHTO) Standards: M181 - Standard Specification for Chain-Link Fence.

C. United States Federal Supply Service General Services Administration Specifications: RR-F-191/3 - Federal Specification Sheet for Fencing, Wire and Post, Metal (Chain-Link Fence Posts, Top Rails and Braces) - Detail Specification.

1.06 SUBMITTAL

The manufacturer's literature shall be submitted prior to installation.

1.07 PRODUCT HANDLING AND STORAGE

Upon receipt at the job site, all materials shall be checked to ensure that no damages occurred during shipping or handling. Materials shall be stored in such a manner to ensure proper ventilation and drainage and to protect against damage, weather, vandalism and theft.

PART 2 - MATERIALS

2.01 MANUFACTURER

Framework for color chain link fence systems shall

conform to Ameristar® PermaCoat® PC-40™ Fence Pipe (industrial weight), as manufactured by Ameristar® Fence Products in Tulsa, Oklahoma.

2.02 MATERIAL - STEEL FRAMEWORK

A. The steel material used to manufacture Ameristar® PermaCoat® PC-40™ Fence Pipe shall be zinc-coated steel strip, galvanized by the hot-dip process conforming to the criteria of ASTM A653/A653M and the general requirements of ASTM A924/A924M.

B. The zinc used in the galvanizing process shall conform to ASTM B6. Weight of zinc shall be determined using the test method described in ASTM A90 and shall conform to the weight range (external and internal) of ASTM F1043, Type B.

C. The framework shall be manufactured in accordance with commercial standards to meet the strength (50,000 psi minimum yield strength) and coating requirements of the following standards: 1.) ASTM F1043, Group IC, Electrical Resistance Welded Round Steel Pipe, heavy industrial weight. 2.) M181, Type I, Grade 2, Electrical Resistance Welded Steel Pipe. 3.) RR-F-191/3, Class 1, Grade B, Electrical Resistance Welded Steel Pipe.

D. The exterior surface of the electrical resistance weld shall be recoated with the same type of material and thickness as the basic zinc coating.

E. The manufactured framework shall be subjected to the PermaCoat® process, a complete thermal stratification coating process (multi-stage, high-temperature, multi-layer) including, as a minimum, a six-stage pretreatment/wash (with zinc phosphate), an electrostatic spray application of an epoxy base, and a separate electrostatic spray application of a polyester finish.

F. The material used for the base coat shall be a (gray color) thermosetting epoxy; the minimum thickness of the base coat shall be two (2) mils. The material used for the finish coat shall be a thermosetting "no-mar" TGIC polyester powder; the minimum thickness of the finish coat shall be two (2) mils. The stratification coated pipe shall demonstrate the ability to endure a salt-spray resistance test in accordance with ASTM B117 without loss of adhesion for a minimum exposure time of 3,500 hours. Additionally, the coated pipe shall demonstrate the ability to withstand exposure in a weather-ometer apparatus for 1,000 hours without failure in accordance with ASTM D1499 and to show satisfactory adhesion when subjected to the cross-hatch test, Method B, in ASTM D3359. The polyester finish coat shall not crack, blister or split under normal use.

G. The color of all framework shall be (specify Black, Green or Brown) in accordance with ASTM F934.

H. The strength of Ameristar® PermaCoat® PC-40™ Fence Pipe shall conform to the requirements of ASTM F1043; the minimum weight shall not be less than 90% of the nominal weight (see Table 1). The strength of line, end, corner and pull posts shall be determined by the use of 4' or 6' cantilevered beam test. The top rail shall be determined by a 10' free-supported beam test (see Table 1). An alternative method of determining pipe strength is by the calculation of bending moment (see Table 1). Conformance with this specification can be demonstrated by measuring the yield strength of a randomly selected piece of pipe from each lot and calculating the section modulus. The yield strength shall be determined according to the methods described in ASTM E8. For materials under this specification, the 0.2 offset

method shall be used in determining yield strength. Terminal posts, line posts and top/bottom rails shall be precut to specified lengths.

2.03 MATERIAL - FENCE FABRIC

A. The material for chain link fence fabric shall be manufactured from galvanized steel wire. The weight of zinc shall meet the requirements of ASTM F668, Table 4. Galvanized wire shall be PVC-coated to meet the requirements of ASTM F668. The class of the fence fabric shall be (specify Class 1 - Extruded, Class 2A - Extruded and Bonded or Class 2B - Fused and Bonded).

B. Selvage: Top edge (specify knuckled or twisted) and bottom edge (specify knuckled or twisted).

C. Color: The coating color for the fence fabric shall be (specify Black, Green or Brown). Reference ASTM F668 and ASTM F934.

D. Wire Size: The size of the steel wire core shall be (specify gauge) gauge. (See Table 2); the finished size of the coated wire shall be (specify gauge) gauge (See Table 2).

E. Height and Mesh Size: The fabric height shall be (specify height) feet high with a mesh size of (specify mesh size) inches. (See Table 2).

2.04 MATERIAL - FENCE FITTINGS

The material for fence fittings shall be manufactured to meet the requirements of ASTM F626. The coating for all fittings shall be the same PermaCoat® color coating system required for the framework (see 2.02); the color of all fittings and fasteners shall be (specify Black, Green or Brown) in accordance with ASTM F934. All fasteners shall be stainless steel.

2.05 MATERIAL - GATES

Swing gates shall be manufactured and coated to meet the requirements of ASTM F900. Slide gates shall be manufactured to meet the requirements of ASTM F1184. The color of all gates shall be (specify Black, Green or Brown) in accordance with ASTM F934.

PART 3 - EXECUTION

3.01 PREPARATION

All new installation shall be laid out by the contractor in accordance with the construction plan.

3.02 INSTALLATION

Install chain link fence in accordance with ASTM F567. For chain link tennis court fences, install in accordance with ASTM F969. Fence posts shall be set at spacings of a maximum of 10' o.c. Gate posts shall be spaced according to the gate openings specified in the construction plans. The "Paving and Surfacing," "Cast-In-Place Concrete" and "Unit Masonry" sections of this specification shall govern post base placement and material requirements. Install fabric on security side and attach with wire ties or clip to line posts at 15 inches o.c. and to rails, braces and tension wire at 24 inches o.c.

3.03 CLEANING

The contractor shall clean the jobsite of excess materials. Post hole excavations shall be scattered uniformly away from posts.

TABLE 1

Fence Industry O.D.	Nominal O.D. Equivalent		Pipe Wall Thickness		Weight		Section Modulus Inches	x	Min. Yield Strength psi	=	Max. Bending Moment (ft. ft.)	Calculated Load (lbs.)		
	Inches	(mm)	Inches	(mm)	lb./ft.	(kg/m)						10' Free Supported	4'	6'
1-5/8"	1.660	42.16	.111	2.82	1.84	2.74	.1951	x	50,000	=	9,805	327	204	136
2"	1.900	48.26	.120	3.05	2.28	3.99	.2810	x	50,000	=	14,050	468	293	195
2-1/2"	2.375	60.33	.130	3.30	3.12	4.64	.4881	x	50,000	=	24,405	814	508	339
3"	2.875	73.03	.160	4.06	4.84	6.90	.8778	x	50,000	=	43,890	1,463	914	610
4"	4.000	101.60	.160	4.06	6.58	9.76	1.7819	x	50,000	=	89,095	2,970	1,856	1,237

TABLE 2

Finished Gauge	Finished OD (NOM)	Core Diameter (NOM)	PVC Coating Thickness	Mesh Sizes Available	Fabric Extrusion Type	Minimum Breaking Strength
6	.192 (4.88 mm)	.148 (3.76 mm)	.015 - .025 (0.38 - 0.64 mm)	2 (50 mm); 1-3/4 (44 mm)	CLASS 2A	1290#
8	.162 (4.11 mm)	.120 (3.05 mm)	.015 - .025 (0.38 - 0.64 mm)	2 (50 mm); 1-3/4 (44 mm); 1 (25 mm)	CLASS 1, 2A	850#
9	.148 (3.76 mm)	.120 (3.05 mm)	.015 - .025 (0.38 - 0.64 mm)	2 (50 mm); 1-3/4 (44 mm); 1 (25 mm)	CLASS 1, 2A	850#

Distributed By:

Printed in U.S.A.
Rev. 04/08

SEE US IN



Call 1-800-321-8724 to request
an Architectural Binder



P.O. Box 581000 - Tulsa, OK. 74158-1000
(918) 835-0898 - 1-800-321-8724
Fax (877) 926-3747

E-Mail: mldtg@ameristarfence.com
Http://www.ameristarfence.com

COLOR COATED CHAIN LINK FENCE FABRIC

15 YEAR LIMITED WARRANTY

Merchants Metals warrants to the original purchaser and not to any other purchaser, and not to any subsequent owner, that its color coated chain link fabric is free from defects in material and workmanship and, under normal and proper usage, will not fail due to rust or corrosion for a period of fifteen (15) years from the date of purchase.

This warranty does not cover fading and does not apply in marine/salty/coastal or harsh industrial environments. This warranty only applies to defects resulting from normal use; any of the following events or conditions will void this warranty: faulty installation; damage during transportation; alteration of the product of any kind (including but not limited to affixing any other materials to the product); accident; abuse; fire; flood; damage caused by landscaping equipment; harsh or abrasive chemicals or exposure to water with high mineral content; plant growth; or acts of God.

UNDER THIS WARRANTY, MERCHANTS METALS' OBLIGATION IS LIMITED TO THE REPAIR OR REPLACEMENT (AT MERCHANTS METALS' OPTION) OF DEFECTIVE MATERIAL ONLY ON A PRORATED BASIS. Reimbursements for the cost of removal and/or installation are not included, and Merchants Metals will not provide such service. If any material appears to have failed due to rust or corrosion, the original consumer must advise the contractor from whom the material was purchased, in writing with a copy to Merchants Metals at the address provided below. Return of the warranty form is not a condition to warranty coverage, provided you can adequately prove that the materials installed were purchased from Merchants Metals. Merchants Metals reserves the right to inspect the material to determine the validity of any claim.

MERCHANTS METALS IS NOT RESPONSIBLE FOR INJURY, PROPERTY DAMAGE OR OTHER INDIRECT, SPECIAL OR CONSEQUENTIAL DAMAGES ARISING OUT OF THE USE OF THIS MATERIAL, NOTWITHSTANDING THE FACT THAT SAID INJURY, PROPERTY DAMAGE OR OTHER DAMAGES AROSE DIRECTLY OR INDIRECTLY FROM AN ACTUAL OR ALLEGED DEFECT IN MATERIAL AND/OR WORKMANSHIP.

SOME JURISDICTIONS DO NOT ALLOW THE EXCLUSION OR LIMITATION OF INCIDENTAL OR CONSEQUENTIAL DAMAGES, SO THE ABOVE LIMITATIONS AND EXCLUSIONS MAY NOT APPLY TO YOU.

This warranty gives you specific legal rights, and you may also have other rights, which vary from state to state.

If a dispute arises between you and Merchants Metals concerning the warranty provided hereunder, you may choose, but are not required, to attempt to resolve such dispute by arbitration administered in Harris County, Texas by the American Arbitration Association (AAA) and conducted under its rules. The arbitration will be conducted before a single arbitrator and will be limited solely to the dispute between you and Merchants Metals. If you prevail in the arbitration of any dispute with Merchants Metals, Merchants Metals will reimburse you for any fees you paid to AAA in connection with the arbitration. Any decision rendered in such arbitration proceedings will be final and binding on the parties, and judgment may be entered thereon in any court of competent jurisdiction. You understand that, if you choose to submit any dispute hereunder to arbitration in accordance with this provision, you forego the rights that you had to litigate such dispute through a court, including the right to litigate any claim on a class-wide or class-action basis, and that you expressly and knowingly waive these rights by submitting the dispute to binding arbitration in accordance with this provision.

The above constitutes the complete warranty by the manufacturer and may not be modified, amended or supplemented. No other agreement, written or implied, is valid. Merchants Metals does not authorize any other person or agent to make any other express warranties. Merchants Metals neither assumes nor authorizes any other person or agent to assume any other liability in connection with the product.



Merchants Metals[®]
the first name in fence solutions

4901 Langley Rd.
Houston, TX 77093
www.merchantsmetals.com

Fence Contractor

Job No./Customer

Date of Significant Completion

Authorized Signature

Version 03/12



(<http://www.razorribbon.com>)

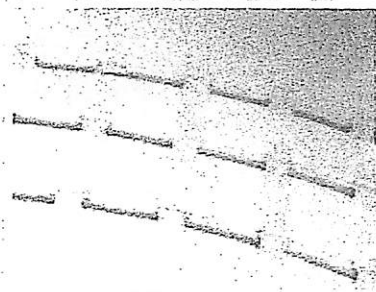


Atkore (<http://atkore.com/>) News (<http://www.razorribbon.com/news/>) Careers (<http://atkore.com/careers>)

Contact (<http://www.razorribbon.com/contact/>)

BTC BARBED TAPE CONCERTINA

Home (<http://www.razorribbon.com>) / Products (<http://www.razorribbon.com/products/>) / Military/Border Security (<http://www.razorribbon.com/military-border-security/>) / BTC Barbed Tape Concertina



Single Coil Wire Reinforced Concertinas

Single coil wire reinforced concertinas, 38" in diameter are fabricated from 0.020" thick ASTM A653 (GA) galvanized steel strip. Strip is clinched around a galvanized steel core wire. Each roll consists of 56 coil loops with pairs of coil loops alternately clipped together at five locations around the circumference. Each coil extends to 50' when deployed at 21" coil spacing. Two opposing handles at each end are attached to the end coils. Refer to Military Specifications A-A-555-22A for additional information.

USES: Military battlefield and training barrier.

Military Tactical Barrier Concertina Coil (WIRE-REINFORCED)

NSN	DIA.	COIL LOOPS	STRIP MATL.	CORE WIRE	LOOP SPACING	YIELD	PKG.
-	18"	56	SS	SS	16'	37'	1/40
-	18"	56	SS	GA	16'	37'	1/40
-	18"	56	GA	GA	16'	37'	1/40
-	28"	56	SS	SS	21'	50'	1/40
-	28"	56	SS	GA	21'	50'	1/40
-	28"	56	GA	GA	21'	50'	1/40
-	38"	56	SS	SS	21'	50'	1/40
-	38"	56	SS	GA	21'	50'	1/40
5660-00-921-5516	38"	56	GA	GA	21'	50'	1/40

Minimum to Medium Security ▶ (<http://www.razorribbon.com/minimum-to-medium-security/>)

Maximum Security Confinement ▶ (<http://www.razorribbon.com/maximum-security-confinement/>)

Military/Border Security ▶ (<http://www.razorribbon.com/military-border-security/>)

Law Enforcement ▶ (<http://www.razorribbon.com/law-enforcement/>)

Other Power-Station Type Environments ▶ (<http://www.razorribbon.com/other-power-station-type-environments/>)

Enhanced Security ▶ (<http://www.razorribbon.com/enhanced-security/>)

Accessories ▶ (<http://www.razorribbon.com/accessories/>)

☎ Contact Us (<http://www.razorribbon.com/contact/>)

➦ Share this Page

Atkore's Twitter

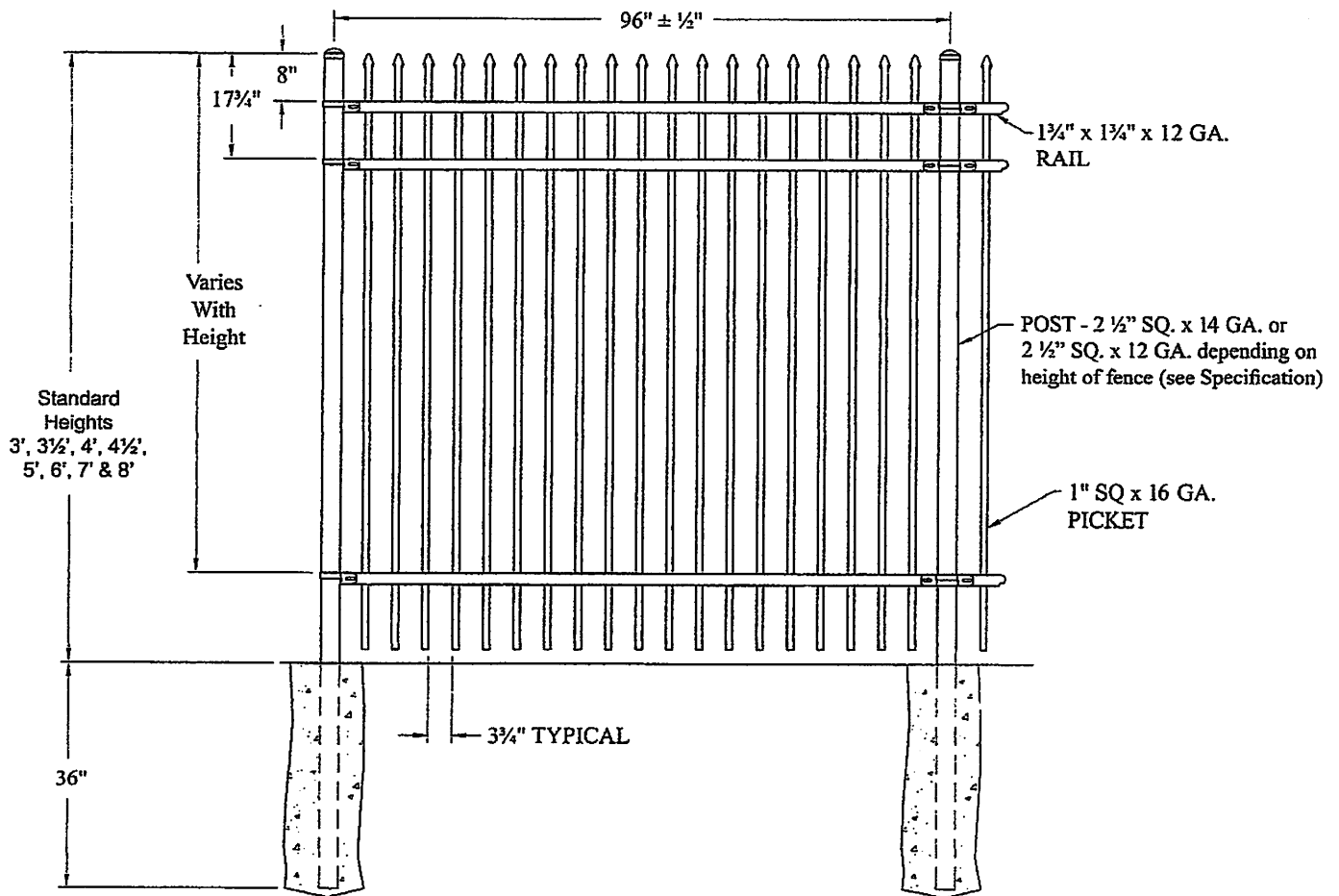
Choose Unistrut Defender as a high performance stainless steel alternative for your next project. Learn more at <https://t.co/AqpcnDHFHJ> (<https://t.co/AqpcnDHFHJ>) (Apr 25

(<https://twitter.com/AtkoreIntl/status/724660638304342016>))

MONTAGE INDUSTRIAL®

ORNAMENTAL FENCE RAKABLE ALL-TERRAIN FLEXIBILITY (ATF)

TYPICAL PANEL DRAWING
(Classic Style shown; Genesis, Majestic & Invincible also available)



Note: See Montage Industrial Specification for Guidelines on Post Spacing by Bracket Type

E-COAT
PROTECTION

UNIQUE FUSION WELDING PROCESS

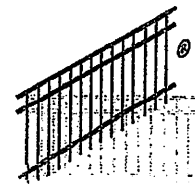
PATENTS: #D466,620 #6,811,145 #7,071,439

ATF®
RAKABLE DESIGN

PATENTS: #D466,620 #7,071,439



- AUTOMATICALLY WELDED AT ALL INTERSECTIONS
- NO EXPOSED WELDS - VIRTUALLY SEAMLESS APPEARANCE
- GOOD NEIGHBOR PROFILE - SAME ON BOTH SIDES
- CONSISTENTLY HIGH QUALITY LEVEL - EVERY PANEL
- HOT-DIP GALVANIZED STEEL BASE MATERIAL





DECISION MEMO
FENCE INSTALLATION PROJECT
UINTA-WASATCH-CACHE NATIONAL FOREST
OGDEN RANGER DISTRICT
WEBER COUNTY, UTAH

BACKGROUND

Ogden City has five wells authorized under a special use authorization. They are proposing to install fencing around each of the five wells and also around the existing generator building in order to protect the safety of public drinking water. 90% of Ogden's culinary water supply is derived from these five wells. The fence poles will be dug 10' on center and will be buried to a depth of 2'4", the fence will be 8' high. The project location is on a peninsula at the north end of Pineview Reservoir, T7N,R1E section 11.

DECISION

After reviewing the project proposal and receiving input from Forest Resource Specialists I have decided to approve this project pending the below mitigation measures are followed.

SCOPING

Internal scoping and input from an interdisciplinary team of Uinta-Wasatch-Cache National Forest resource specialists found no extraordinary impacts associated with the proposed action.

REASONS FOR CATEGORICALLY EXCLUDING THE PROJECT

Proposed actions may be categorically excluded from further analysis and documentation in an environmental impact statement or environmental assessment when they are within one of the categories identified by the U.S. Department of Agriculture in 7 CFR part 1b.3 or listed in 36 CFR 220.6 (d) or (e), and there are no extraordinary circumstances related to the decision that may result in a significant individual or cumulative environmental effects.

These projects are categorically excluded from documentation in an environmental impact statement (EIS) or an environmental assessment (EA) because they fit within the category of actions identified in agency procedures as 36 CFR 220.6 (e) (3), *Approval, modification or continuation of minor special uses of NFS lands that require less than five contiguous acres of land*. For projects that are categorically excluded, there is no need to repeat a detailed analysis of effects to all resources. In promulgating the categories, the Forest Service has concluded that projects that fit those categories do not individually or cumulatively have a significant effect on the human environment. Thus, once the analysis establishes that this project has no extraordinary circumstances and fits into a category, the responsible official can reach the conclusion that there will be no significant effects to the environment without further analysis.

CONSIDERATION OF EXTRAORDINARY CIRCUMSTANCES

I find that there are no extraordinary circumstances that would warrant further analysis and documentation in an EA or EIS. I took into account resource conditions identified in agency procedures that should be considered in determining whether extraordinary circumstances might exist:

1. Federally listed threatened or endangered species or designated critical habitat, species proposed for Federal listing or proposed critical habitat, or Forest Service sensitive species:
 - No effects or impacts to wildlife, fish, or botanical species is expected. (Wildlife, Fisheries, Amphibian and Botany Reports, Project Record).
2. Flood plains, wetlands, or municipal watersheds
 - No adverse effects are expected (Project Record, Water Resource Report).
3. Congressionally designated areas such as wilderness, wilderness study areas, or national recreation areas
 - None are present (Project Record).
4. Inventoried roadless areas or potential wilderness areas
 - No activities are proposed in inventoried roadless or potential wilderness areas.
5. Research natural areas
 - None are present (Project Record).
6. American Indians and Alaska Native religious or cultural sites
 - None known (Project Record: Cultural Resources).
7. Archaeological sites, or historic properties or areas
 - The Forest Archaeologist determined that there would be no adverse effect (Project Record: Cultural Resources).

MITIGATION MEASURES

Project implementation will include the following design features, all applicable 2003 Wasatch-Cache National Forest Land and Resource Management Plan standards and guidelines, and other relevant direction from Forest Specialists:

- All fencing and supports need to be a PVC coated brown.
- All equipment must be washed and inspected by Forest Service personnel prior to entering National Forest system land.

FINDINGS REQUIRED BY OTHER LAWS AND REGULATIONS

My decision is consistent with the 2003 Wasatch-Cache National Forest Land and Resource Management (Forest Plan) as required by the National Forest Management Act. This action is in conformance with the Forest Plan standards and incorporates appropriate Forest Plan guidelines.

Executive Order 11988, "Floodplain Management," instructs federal agencies to avoid long- and short-term adverse impacts associated with occupancy and modification of floodplains, and to avoid direct or



indirect support of floodplain development. This project involves no floodplain occupancy, modification, or development. My decision is consistent with this executive order.

Executive Order 11990, "Protection of Wetlands," instructs federal agencies to avoid the long- and short-term adverse impacts associated with destruction or modification of wetlands, and to avoid direct or indirect support of new construction in wetlands. This project involves no destruction or modification of wetlands, or new construction in wetlands. My decision is consistent with this executive order.

Executive Order 12898, "Federal Actions to Address Environmental Justice in Minority Populations and Low-Income Populations," instructs federal agencies to identify and address any disproportionately high and adverse human health or environmental effects on minority and low-income populations. My decision is consistent with this executive order.

Executive Order 13112, "Invasive Species," instructs federal agencies to prevent the introduction of invasive species and provide for their control and to minimize the economic, ecological, and human health impacts that invasive species cause. All project-related equipment and machinery will be washed prior to entry onto Forest Service lands to reduce or eliminate the spread of noxious weed and invasive species. My decision is consistent with this executive order.

Executive Order 13186, "Responsibilities of Federal Agencies to Protect Migratory Birds," instructs federal agencies taking actions that have, or are likely to have, a measurable negative effect on migratory bird populations to develop and implement a memorandum of understanding with the U.S. Fish and Wildlife Service. The project is expected to have no measurable negative effect on migratory bird populations. My decision is consistent with this executive order.

ADMINISTRATIVE REVIEW (APPEAL) OPPORTUNITIES

Because the action is excluded from documentation in an environmental assessment or an environmental impact statement in the category noted above, it is not subject to appeal and may be implemented immediately.

IMPLEMENTATION DATE

Implementation of this decision may begin immediately following the issuance of this decision memo.

CONTACT

For additional information concerning this decision, contact Anne Hansen, (801) 625-5781.

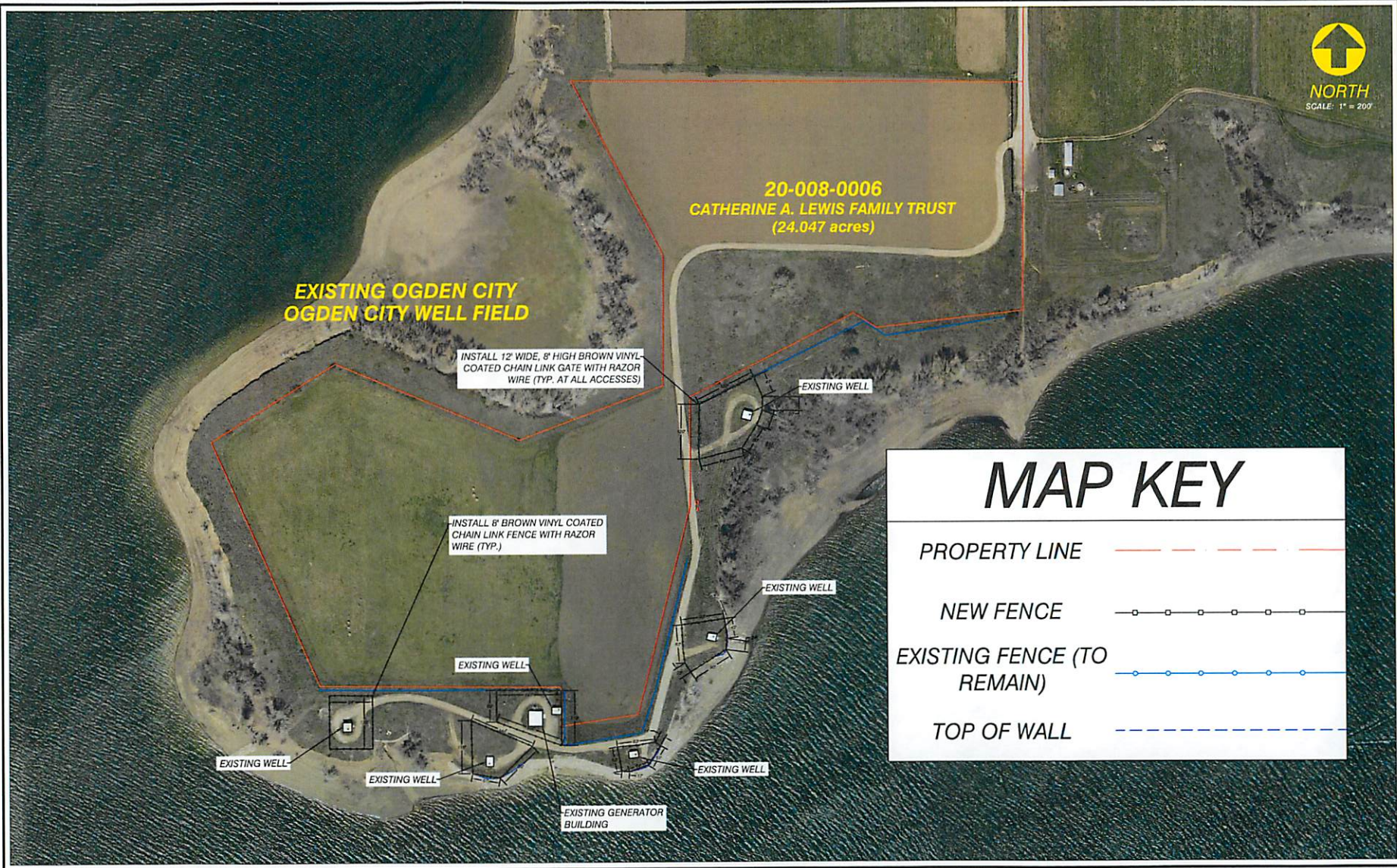
David C. Whittekiend
Forest Supervisor

7/19/16

Date



The U.S. Department of Agriculture (USDA) prohibits discrimination in all its programs and activities on the basis of race, color, national origin, age, disability, and where applicable, sex, marital status, familial status, parental status, religion, sexual orientation, genetic information, political beliefs, reprisal, or because all or part of an individual's income is derived from any public assistance program. (Not all prohibited bases apply to all programs.) Persons with disabilities who require alternative means for communication of program information (Braille, large print, audiotape, etc.) should contact USDA's TARGET Center at (202) 720-2600 (voice and TDD). To file a complaint of discrimination, write to USDA, Director, Office of Civil Rights, 1400 Independence Avenue, S.W., Washington, D.C. 20250-9410, or call (800) 795-3272 (voice) or (202) 720-6382 (TDD). USDA is an equal opportunity provider and employer.



**20-008-0006
CATHERINE A. LEWIS FAMILY TRUST
(24.047 acres)**

**EXISTING OGDEN CITY
OGDEN CITY WELL FIELD**

INSTALL 12" WIDE, 8" HIGH BROWN VINYL-COATED CHAIN LINK GATE WITH RAZOR WIRE (TYP. AT ALL ACCESSES)

INSTALL 8" BROWN VINYL COATED CHAIN LINK FENCE WITH RAZOR WIRE (TYP.)

MAP KEY

PROPERTY LINE	- - - - -
NEW FENCE	-○-○-○-○-○-
EXISTING FENCE (TO REMAIN)	-○-○-○-○-○-
TOP OF WALL	- - - - -



Site Plan

Ogden City Well Field Fence Installation

Located approximately 900 N. 5900 East
Eden, UT 84310

DESIGNED	-
DRAWN	KDM
CHECKED	KDM

DATE
3/28/16

DRAWING SCALE
H: 1" = 200'
V: 1" = 100'

This bar measures exactly 1/2 inch on the original drawing.

C1

SHEET
1 OF **1**