

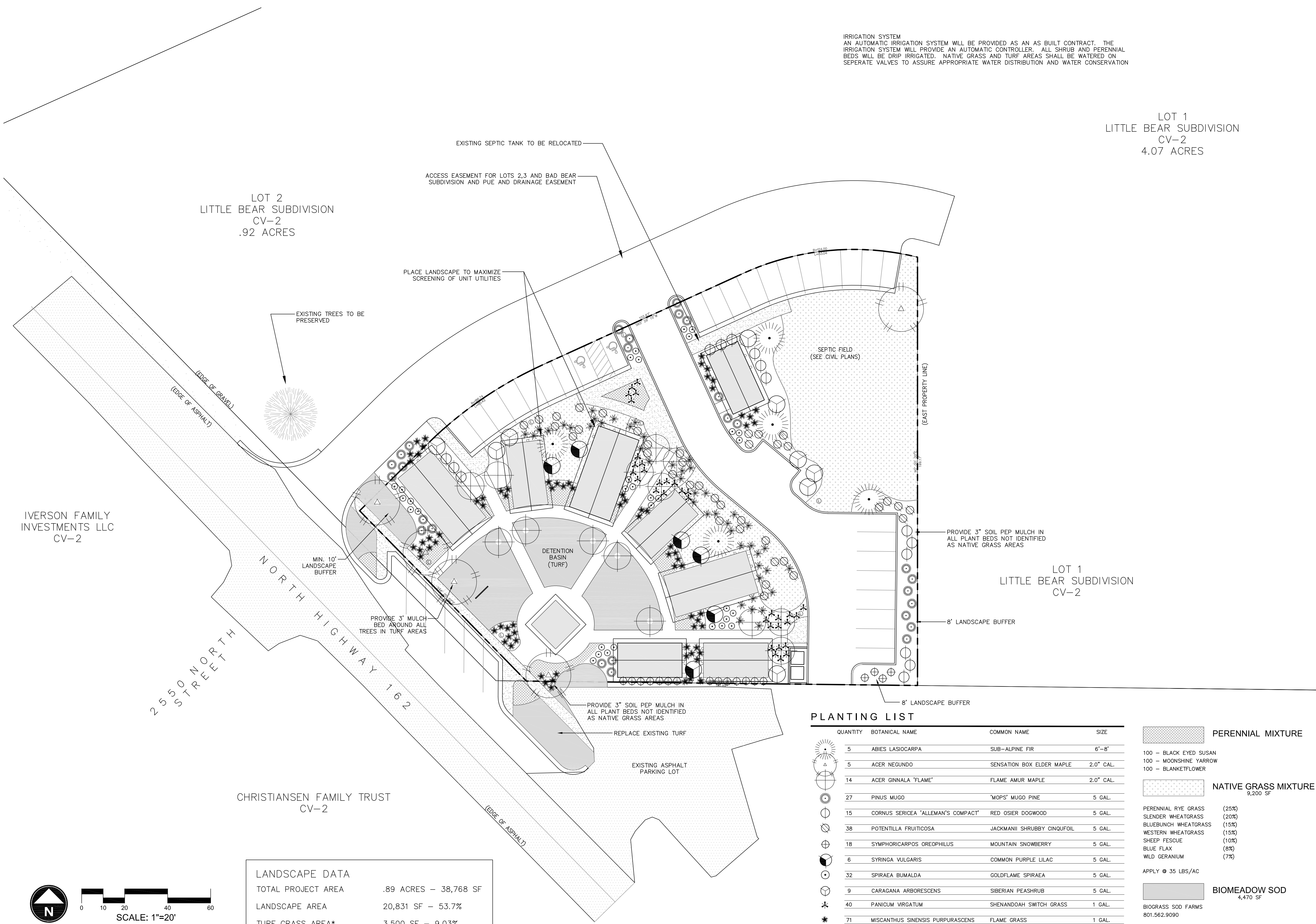
IRRIGATION SYSTEM
 AN AUTOMATIC IRRIGATION SYSTEM WILL BE PROVIDED AS AN AS BUILT CONTRACT. THE IRRIGATION SYSTEM WILL PROVIDE AN AUTOMATIC CONTROLLER. ALL SHRUB AND PERENNIAL BEDS WILL BE DRIP IRRIGATED. NATIVE GRASS AND TURF AREAS SHALL BE WATERED ON SEPERATE VALVES TO ASSURE APPROPRIATE WATER DISTRIBUTION AND WATER CONSERVATION

LOT 1
 LITTLE BEAR SUBDIVISION
 CV-2
 4.07 ACRES

LOT 2
 LITTLE BEAR SUBDIVISION
 CV-2
 .92 ACRES

IVERSON FAMILY
 INVESTMENTS LLC
 CV-2

CHRISTIANSEN FAMILY TRUST
 CV-2



LANDSCAPE DATA

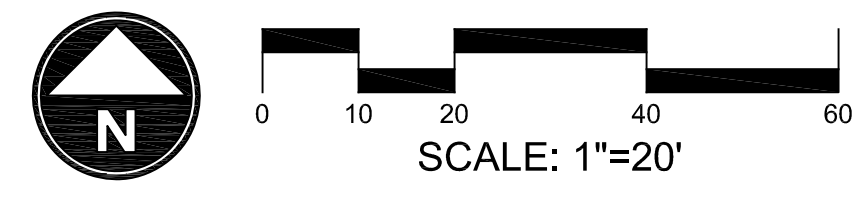
TOTAL PROJECT AREA	.89 ACRES - 38,768 SF
LANDSCAPE AREA	20,831 SF - 53.7%
TURF GRASS AREA*	3,500 SF - 9.03%

* Excludes turf outside of parcel boundary replaced or added to blend to adjacent parcels

PLANTING LIST

QUANTITY	BOTANICAL NAME	COMMON NAME	SIZE
5	ABIES LASIOCARPA	SUB-ALPINE FIR	6"-8"
5	ACER NEGUNDO	SENSATION BOX ELDER MAPLE	2.0" CAL.
14	ACER GINNALA 'FLAME'	FLAME AMUR MAPLE	2.0" CAL.
27	PINUS MUGO	'MOPS' MUGO PINE	5 GAL.
15	CORNUS SERICEA 'ALLEMAN'S COMPACT'	RED OSIER DOGWOOD	5 GAL.
38	POTENTILLA FRUITICOSA	JACKMANII SHRUBBY CINQUOIL	5 GAL.
18	SYMPHORICARPOS OREOPHILUS	MOUNTAIN SNOWBERRY	5 GAL.
6	SYRINGA VULGARIS	COMMON PURPLE LILAC	5 GAL.
32	SPIRAEA BUMALDA	GOLDFLAME SPIRAEA	5 GAL.
9	CARAGANA ARBORESCENS	SIBERIAN PEASHRUB	5 GAL.
40	PANICUM VIRGATUM	SHENANDOAH SWITCH GRASS	1 GAL.
71	MISCANTHUS SINENSIS PURPURASCENS	FLAME GRASS	1 GAL.
45	PEROVSKIA ATRIPLICIFOLIA	LITTLE SPIRE RUSSIAN SAGE	1 GAL.

- PERENNIAL MIXTURE**
- 100 - BLACK EYED SUSAN
 - 100 - MOONSHINE YARROW
 - 100 - BLANKETFLOWER
- NATIVE GRASS MIXTURE**
9,200 SF
- PERENNIAL RYE GRASS (25%)
 - SLENDER WHEATGRASS (20%)
 - BLUEBUNCH WHEATGRASS (15%)
 - WESTERN WHEATGRASS (15%)
 - SHEEP FESCUE (10%)
 - BLUE FLAX (8%)
 - WILD GERANIUM (7%)
- APPLY @ 35 LBS/AC
- BIOMEADOW SOD**
4,470 SF
- BIOGRASS SOD FARMS
801.562.9090



SCALE: 1" = 20'
 DATE: AUGUST 2012
 DESIGN: EL
 DRAWN: EL
 CHECKED:

REVISIONS	DESCRIPTION
DATE	

DWG:

WOP WOM LLC
 EDEN CENTER
 LANDSCAPE PLAN
 EDEN CITY, WEBER COUNTY, UTAH

PLANNING
 CIVIL ENGINEERING
 ALTERNATIVE ENERGY

Gardner Engineering

8875 South Adams Ave. Parkway, Suite 200 • Ogden, UT 84405
 Phone (801) 476-0202 • Fax (801) 476-0066