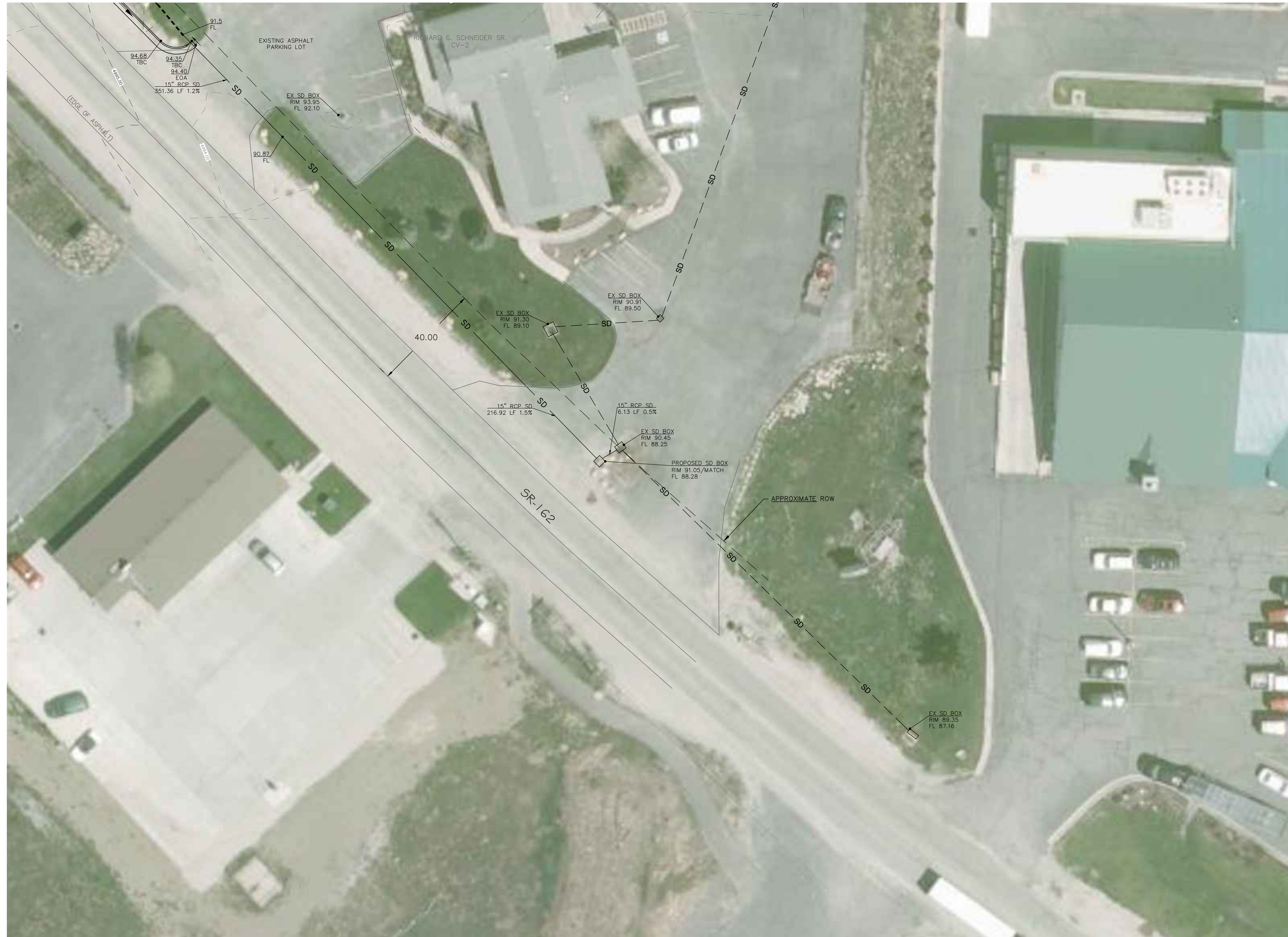
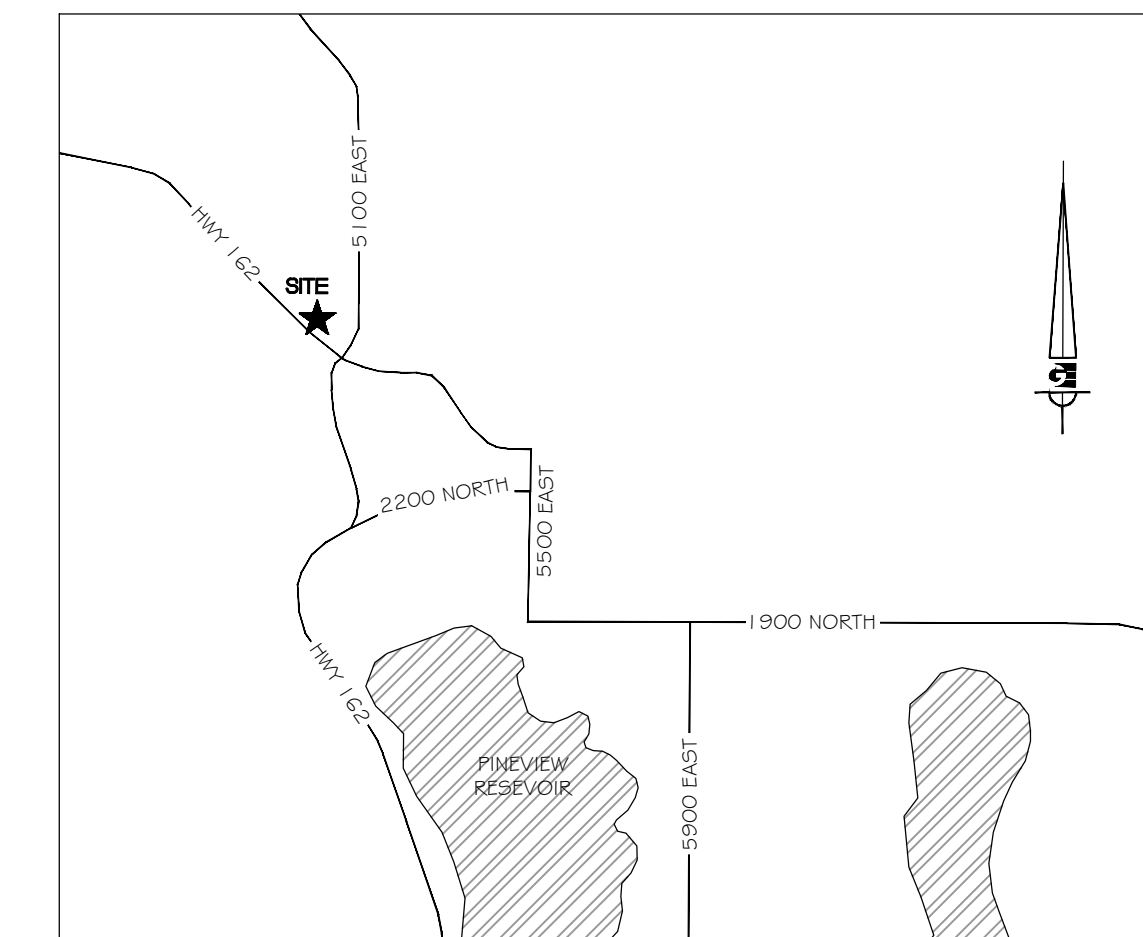


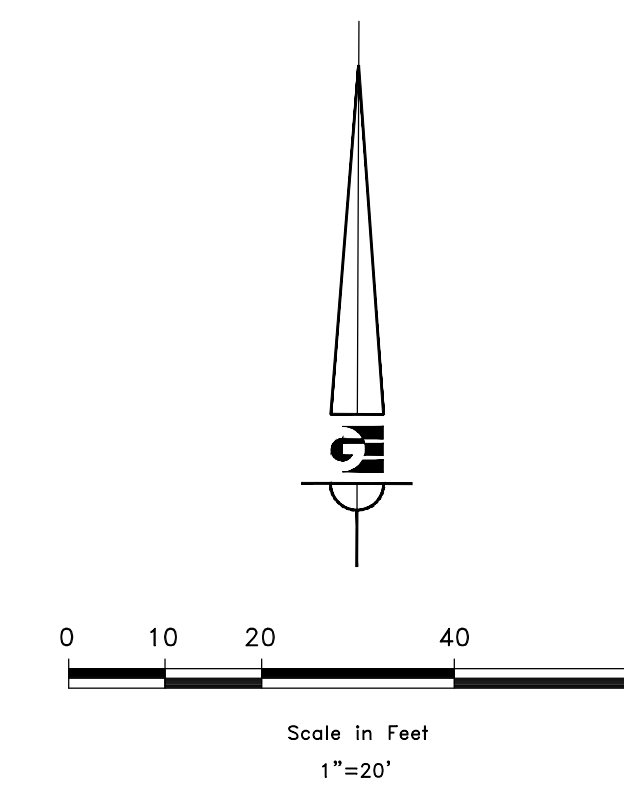
GRADING & DRAINAGE PLAN EXHIBIT  
**EDEN CENTER**  
 PART OF THE NORTHWEST QUARTER OF  
 SECTION 34 T7N, R1E, SLB & M, U.S. SURVEY  
 EDEN CITY, WEBER COUNTY, UTAH  
 2012



- NOTE:  
 1- ALL CONSTRUCTION TO CONFORM TO WEBER COUNTY STANDARDS AND SPECIFICATIONS  
 2- THIS DOES NOT CONSTITUTE A BOUNDARY SURVEY; THE ROW SHOWN IS APPROXIMATE AT BEST AND MAY NOT REFLECT THE ACTUAL ROW



VICINITY MAP



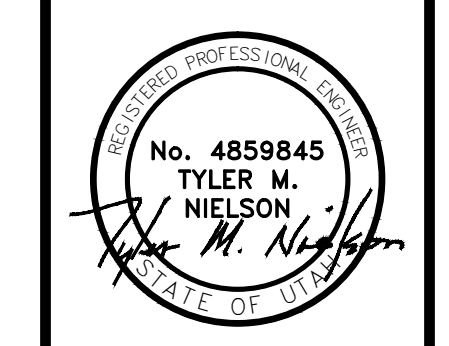
NOTICE:  
 EXISTING UTILITIES ARE SHOWN ON PLANS FOR THE CONVENIENCE OF THE CONTRACTOR ONLY. THE CONTRACTOR IS RESPONSIBLE FOR THE PROTECTION OF ALL UTILITIES. THE ENGINEER BEARS NO RESPONSIBILITY FOR THE UTILITIES NOT SHOWN OR SHOWN INCORRECTLY.  
 Call BLUE STAKES BEFORE YOU Dig  
 1-800-662-4111

DEVELOPER  
 WOP WOM, LLC.  
 ERIC SMITH  
 212 MERCHANT ST. #330  
 HONOLULU, HI 96813  
 PHONE: (808) 524-3551  
 FAX: (808) 524-8803

SCALE: 1" = 20'  
 DATE: 2012  
 DESIGN: TMN/RC/SCC  
 DRAWN: RC  
 CHECKED: TMN

REVISIONS	DESCRIPTION
DATE	

DWG.: SEE PLOT STAMP AT LEFT



WOP WOM LLC  
 EDEN CENTER  
**GRADING PLAN - ROW SD REVISION**  
 EDEN CITY, WEBER COUNTY, UTAH

**Gardner Engineering**  
 PLANNING  
 CIVIL ENGINEERING  
 LAND SURVEYING  
 ALTERNATIVE ENERGY  
 5875 South Adams Ave. Parkway, Suite 200 • Ogden, UT 84405  
 • Phone (801) 476 0202 • Fax (801) 476-0066

EX  
 1