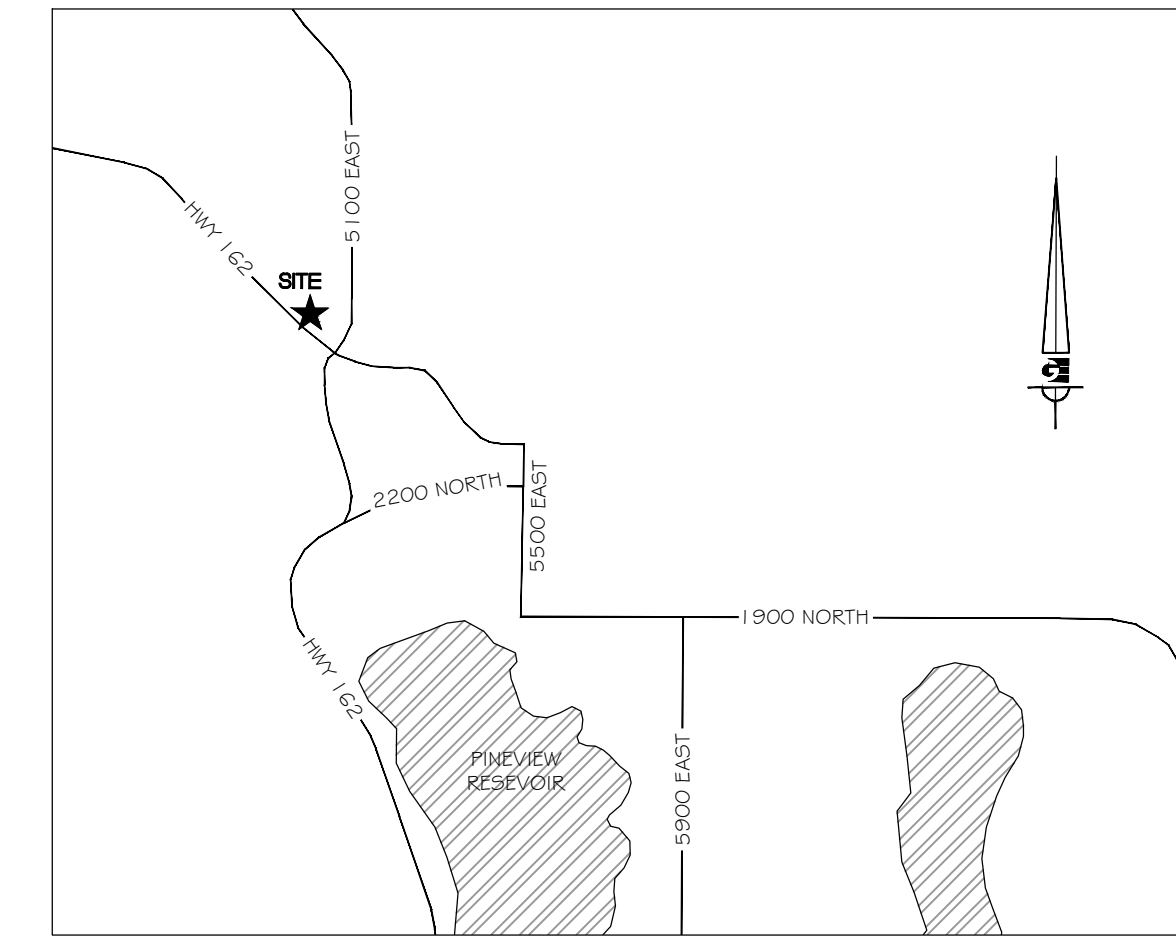
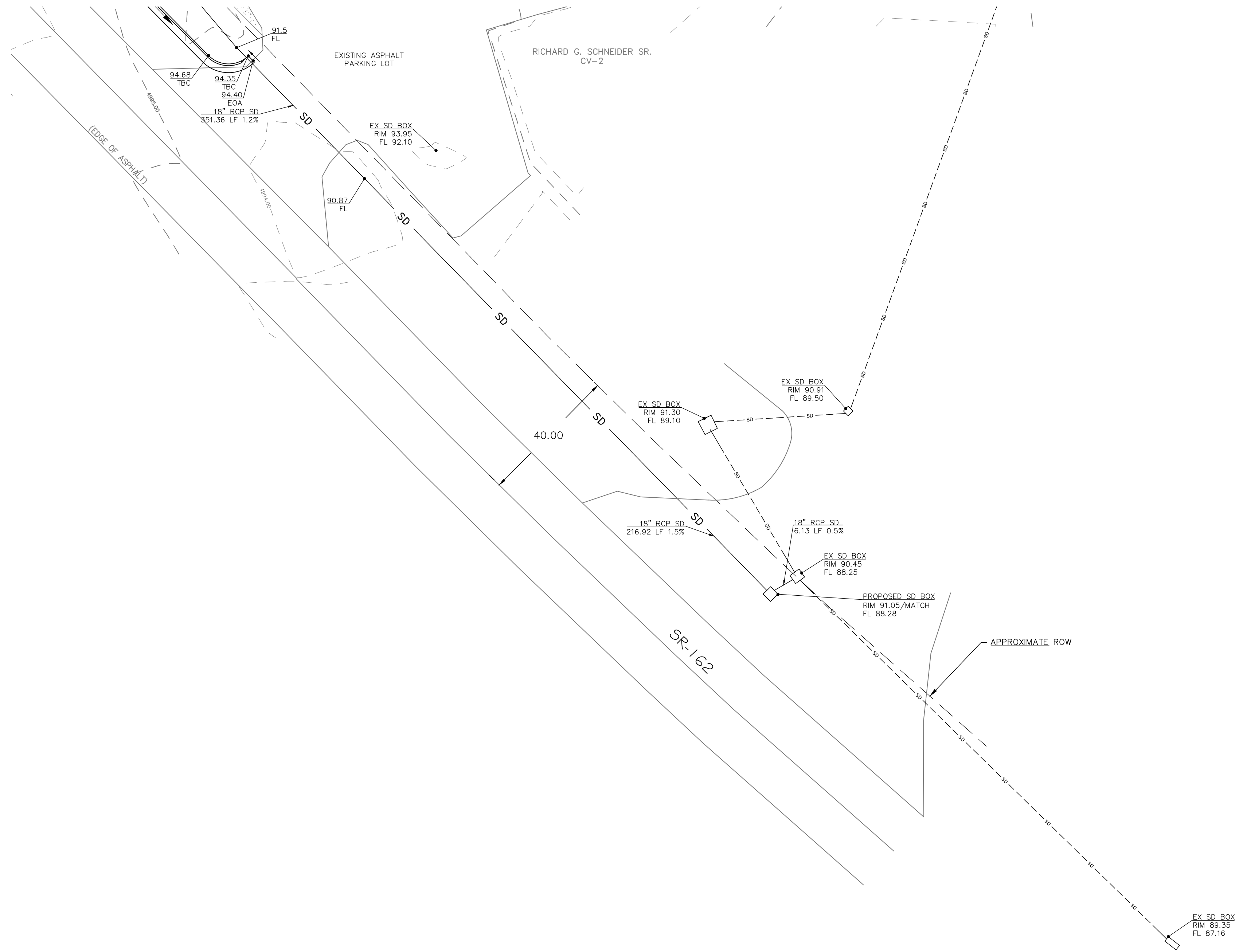
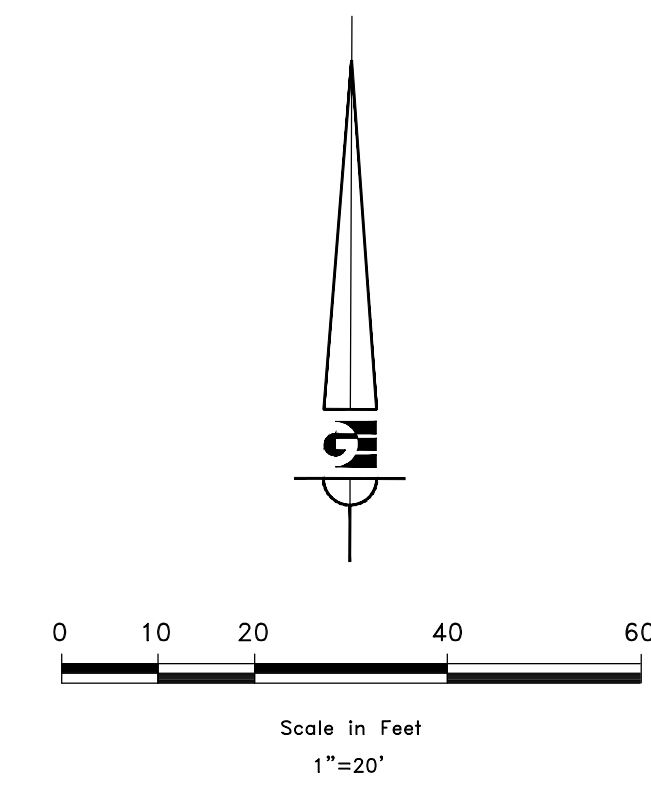


GRADING & DRAINAGE PLAN EXHIBIT
EDEN CENTER
 PART OF THE NORTHWEST QUARTER OF
 SECTION 34 T7N, R1E, SLB & M, U.S. SURVEY
 EDEN CITY, WEBER COUNTY, UTAH
 2012



VICINITY MAP



- NOTE:
 1- ALL CONSTRUCTION TO CONFORM TO WEBER COUNTY STANDARDS AND SPECIFICATIONS
 2- THIS DOES NOT CONSTITUTE A BOUNDARY SURVEY; THE ROW SHOWN IS APPROXIMATE AT BEST AND MAY NOT REFLECT THE ACTUAL ROW

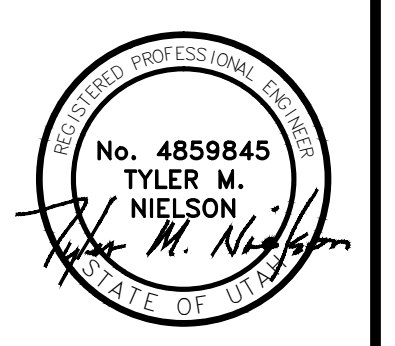
NOTICE: EXISTING UTILITIES ARE SHOWN ON PLANS FOR THE CONVENIENCE OF THE CONTRACTOR ONLY. THE CONTRACTOR IS RESPONSIBLE FOR THE PROTECTION OF ALL UTILITIES. THE ENGINEER BEARS NO RESPONSIBILITY FOR THE UTILITIES NOT SHOWN OR SHOWN INCORRECTLY.

Call BLUE STAKES BEFORE YOU Dig
 1-800-662-4111
UNDESIGNED SINCE 1900

DEVELOPER
 WOP WOM, LLC.
 ERIC SMITH
 212 MERCHANT ST. #330
 HONOLULU, HI 96813
 PHONE: (808) 524-3551
 FAX: (808) 524-8803

SCALE: 1" = 20'
 DATE: 2012
 DESIGN: TMN/RC/SCC
 DRAWN: RC
 CHECKED: TMN

REVISIONS	DESCRIPTION
DATE	



WOP WOM LLC
 EDEN CENTER
 GRADING PLAN - ROW SD REVISION
 EDEN CITY, WEBER COUNTY, UTAH

Gardner Engineering

- > PLANNING
- > CIVIL ENGINEERING
- > LAND SURVEYING
- > ALTERNATIVE ENERGY

5875 South Adams Ave. Parkway, Suite 200 • Ogden, UT 84405
 • Phone (801) 476-0202 • Fax (801) 476-0066

EX
 1

R:\2122 - Wop\Wom\LICENSURE\PRODUCTION\DWG\EDEN CENTER\EDEN CENTER.DWG (1/11/2012 11:03:00 AM) DWG TO PDF PLOT