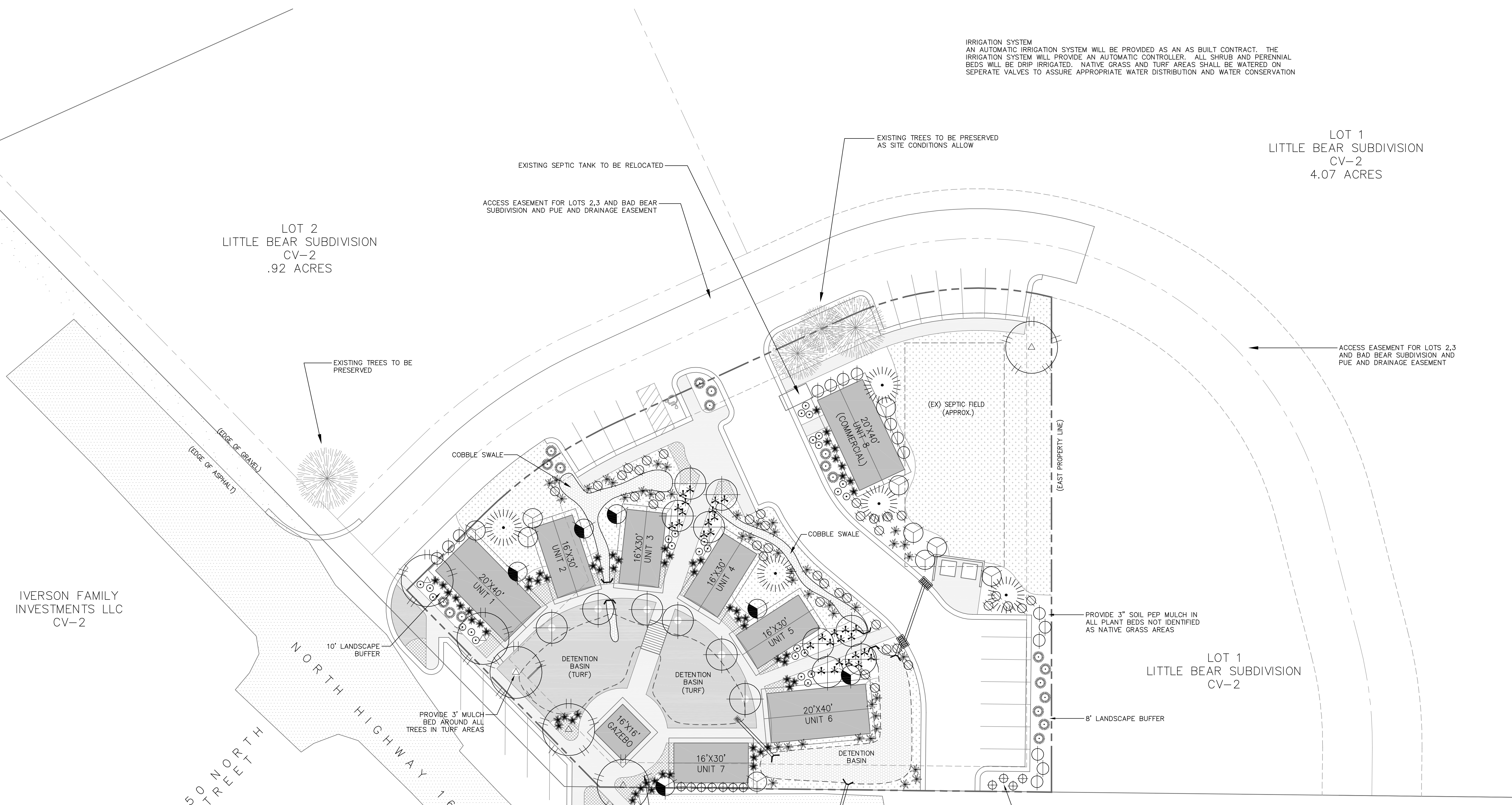


IRRIGATION SYSTEM
 AN AUTOMATIC IRRIGATION SYSTEM WILL BE PROVIDED AS AN AS BUILT CONTRACT. THE IRRIGATION SYSTEM WILL PROVIDE AN AUTOMATIC CONTROLLER. ALL SHRUB AND PERENNIAL BEDS WILL BE DRIP IRRIGATED. NATIVE GRASS AND TURF AREAS SHALL BE WATERED ON SEPERATE VALVES TO ASSURE APPROPRIATE WATER DISTRIBUTION AND WATER CONSERVATION

SCALE: 1" = 20'	DATE: SEPTEMBER, 2011	DESIGN: EL	DRAWN: EL	CHECKED:
REVISIONS	DESCRIPTION			
DATE				
				DWG:

LOT 1
 LITTLE BEAR SUBDIVISION
 CV-2
 4.07 ACRES

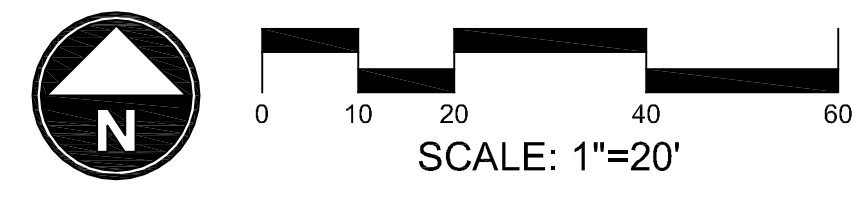
LOT 2
 LITTLE BEAR SUBDIVISION
 CV-2
 .92 ACRES



IVERSON FAMILY INVESTMENTS LLC
 CV-2

CHRISTIANSSEN FAMILY TRUST
 CV-2

LANDSCAPE DATA	
TOTAL PROJECT AREA	.89 ACRES - 38,768 SF
LANDSCAPE AREA	20,838 SF - 53.8%
TURF GRASS AREA	4,090 SF - 10.6%



PLANTING LIST

QUANTITY	BOTANICAL NAME	COMMON NAME	SIZE
5	ABIES LASIOCARPA	SUB-ALPINE FIR	6"-8"
6	ACER NEGUNDO	SENSATION BOX ELDER MAPLE	2.0" CAL.
14	ACER GINNALA 'FLAME'	FLAME AMUR MAPLE	2.0" CAL.
19	PINUS MUGO	'MOPS' MUGO PINE	5 GAL.
16	CORNUS SERICEA 'ALLEMAN'S COMPACT'	RED OSIER DOGWOOD	5 GAL.
38	POTENTILLA FRUITICOSA	JACKMANII SHRUBBY CINQUOIL	5 GAL.
11	SYMPHORICARPOS OREOPHILUS	MOUNTAIN SNOWBERRY	5 GAL.
6	SYRINGA VULGARIS	COMMON PURPLE LILAC	5 GAL.
27	SPIRAEA BUMALDA	GOLDFLAME SPIRAEA	5 GAL.
10	CARAGANA ARBORESCENS	SIBERIAN PEASHRUB	5 GAL.
30	PANICUM VIRGATUM	SHENANDOAH SWITCH GRASS	1 GAL.
64	MISCANTHUS SINENSIS PURPURASCENS	FLAME GRASS	1 GAL.
44	PEROVSKIA ATRIPLOCFOLIA	LITTLE SPIRE RUSSIAN SAGE	1 GAL.

PERENNIAL MIXTURE

- 80 - BLACK EYED SUSAN
- 80 - MOONSHINE YARROW
- 80 - BLANKETFLOWER

NATIVE GRASS MIXTURE
 10,600 SF

- PERENNIAL RYE GRASS (25%)
- SLENDER WHEATGRASS (20%)
- BLUEBUNCH WHEATGRASS (15%)
- WESTERN WHEATGRASS (15%)
- SHEEP FESCUE (10%)
- BLUE FLAX (8%)
- WILD GERANIUM (7%)

APPLY @ 35 LBS/AC

BIOMEADOW SOD
 4,090 SF

BIOGRASS SOD FARMS
 801.562.9090

LANDSCAPE COBBLE
 1,975 SF

2-4" WEBER RIVER COBBLE
 STAKER PARSONS

WOP WOM LLC
 EDEN CENTER
 LANDSCAPE PLAN
 EDEN CITY, WEBER COUNTY, UTAH

Gardner Engineering
 PLANNING
 CIVIL ENGINEERING
 ALTERNATIVE ENERGY

8875 South Adams Ave. Parkway, Suite 200 • Ogden, UT 84405
 Phone (801) 476-0202 • Fax (801) 476-0966