

IRRIGATION SYSTEM  
 AN AUTOMATIC IRRIGATION SYSTEM WILL BE PROVIDED AS AN AS BUILT CONTRACT. THE IRRIGATION SYSTEM WILL PROVIDE AN AUTOMATIC CONTROLLER. ALL SHRUB AND PERENNIAL BEDS WILL BE DRIP IRRIGATED. NATIVE GRASS AND TURF AREAS SHALL BE WATERED ON SEPERATE VALVES TO ASSURE APPROPRIATE WATER DISTRIBUTION AND WATER CONSERVATION

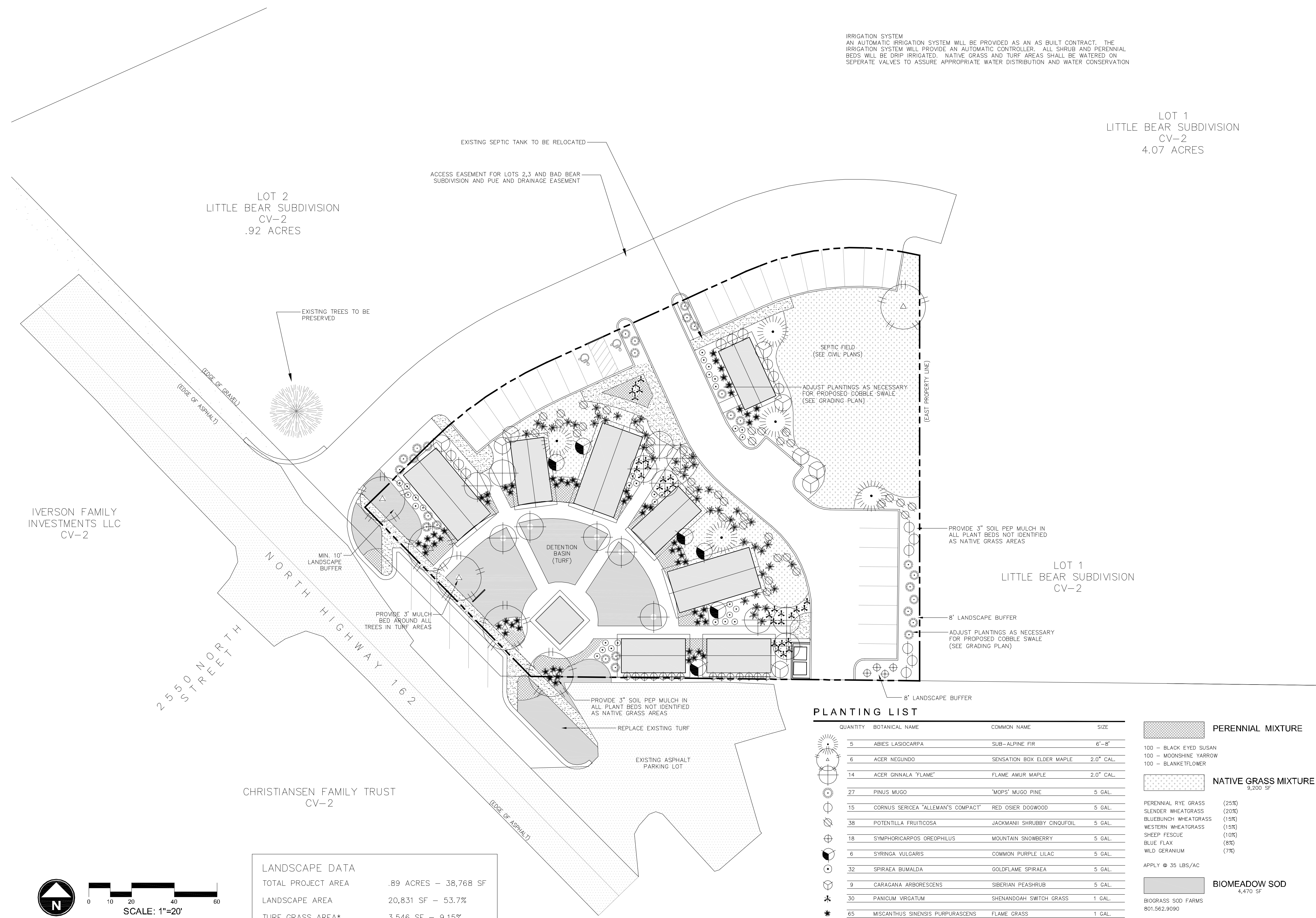
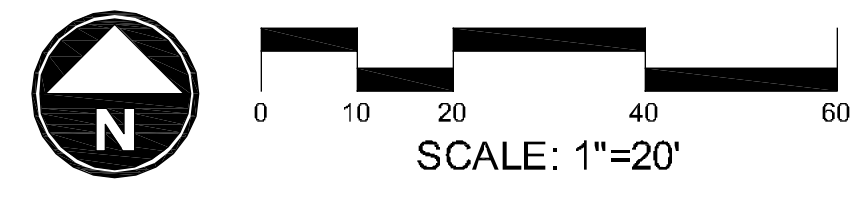
LOT 1  
 LITTLE BEAR SUBDIVISION  
 CV-2  
 4.07 ACRES

LOT 2  
 LITTLE BEAR SUBDIVISION  
 CV-2  
 .92 ACRES

IVERSON FAMILY INVESTMENTS LLC  
 CV-2

CHRISTIANSSEN FAMILY TRUST  
 CV-2

LANDSCAPE DATA	
TOTAL PROJECT AREA	.89 ACRES - 38,768 SF
LANDSCAPE AREA	20,831 SF - 53.7%
TURF GRASS AREA*	3,546 SF - 9.15%
* Excludes turf outside of parcel boundary replaced or added to blend to adjacent parcels	



**PLANTING LIST**

QUANTITY	BOTANICAL NAME	COMMON NAME	SIZE
5	ABIES LASIOCARPA	SUB-ALPINE FIR	6"-8"
6	ACER NEGUNDO	SENSATION BOX ELDER MAPLE	2.0" CAL.
14	ACER GINNALA 'FLAME'	FLAME AMUR MAPLE	2.0" CAL.
27	PINUS MUJO	'MOPS' MUJO PINE	5 GAL.
15	CORNUS SERICEA 'ALLEMAN'S COMPACT'	RED OSIER DOGWOOD	5 GAL.
38	POTENTILLA FRUITICOSA	JACKMANII SHRUBBY CINQUOIL	5 GAL.
18	SYMPHORICARPOS OREOPHILUS	MOUNTAIN SNOWBERRY	5 GAL.
6	SYRINGA VULGARIS	COMMON PURPLE LILAC	5 GAL.
32	SPIRAEA BUMALDA	GOLDFLAME SPIRAEA	5 GAL.
9	CARAGANA ARBORESCENS	SIBERIAN PEASHRUB	5 GAL.
30	PANICUM VIRGATUM	SHENANDOAH SWITCH GRASS	1 GAL.
65	MISCANTHUS SINENSIS PURPURASCENS	FLAME GRASS	1 GAL.
44	PEROVSKIA ATRIPLICIFOLIA	LITTLE SPIRE RUSSIAN SAGE	1 GAL.

**PERENNIAL MIXTURE**

- 100 - BLACK EYED SUSAN
- 100 - MOONSHINE YARROW
- 100 - BLANKETFLOWER

**NATIVE GRASS MIXTURE**  
9,200 SF

- PERENNIAL RYE GRASS (25%)
- SLENDER WHEATGRASS (20%)
- BLUEBUNCH WHEATGRASS (15%)
- WESTERN WHEATGRASS (15%)
- SHEEP FESCUE (10%)
- BLUE FLAX (8%)
- WILD GERANIUM (7%)

APPLY @ 35 LBS/AC

**BIOMEADOW SOD**  
4,470 SF

BIOGRASS SOD FARMS  
801.562.9090

REVISIONS	DESCRIPTION
DATE	

SCALE: 1" = 20'  
 DATE: DECEMBER, 2011  
 DESIGN: EL  
 DRAWN: EL  
 CHECKED:

WOP WOM LLC  
 EDEN CENTER  
 LANDSCAPE PLAN  
 EDEN CITY, WEBER COUNTY, UTAH

PLANNING  
 ENGINEERING  
 LAND SURVEYING  
 ALTERNATIVE ENERGY

**Gardner Engineering**

8875 South Adams Ave. Parkway, Suite 200 • Ogden, UT 84405  
 Phone (801) 475-0202 • Fax (801) 475-0066