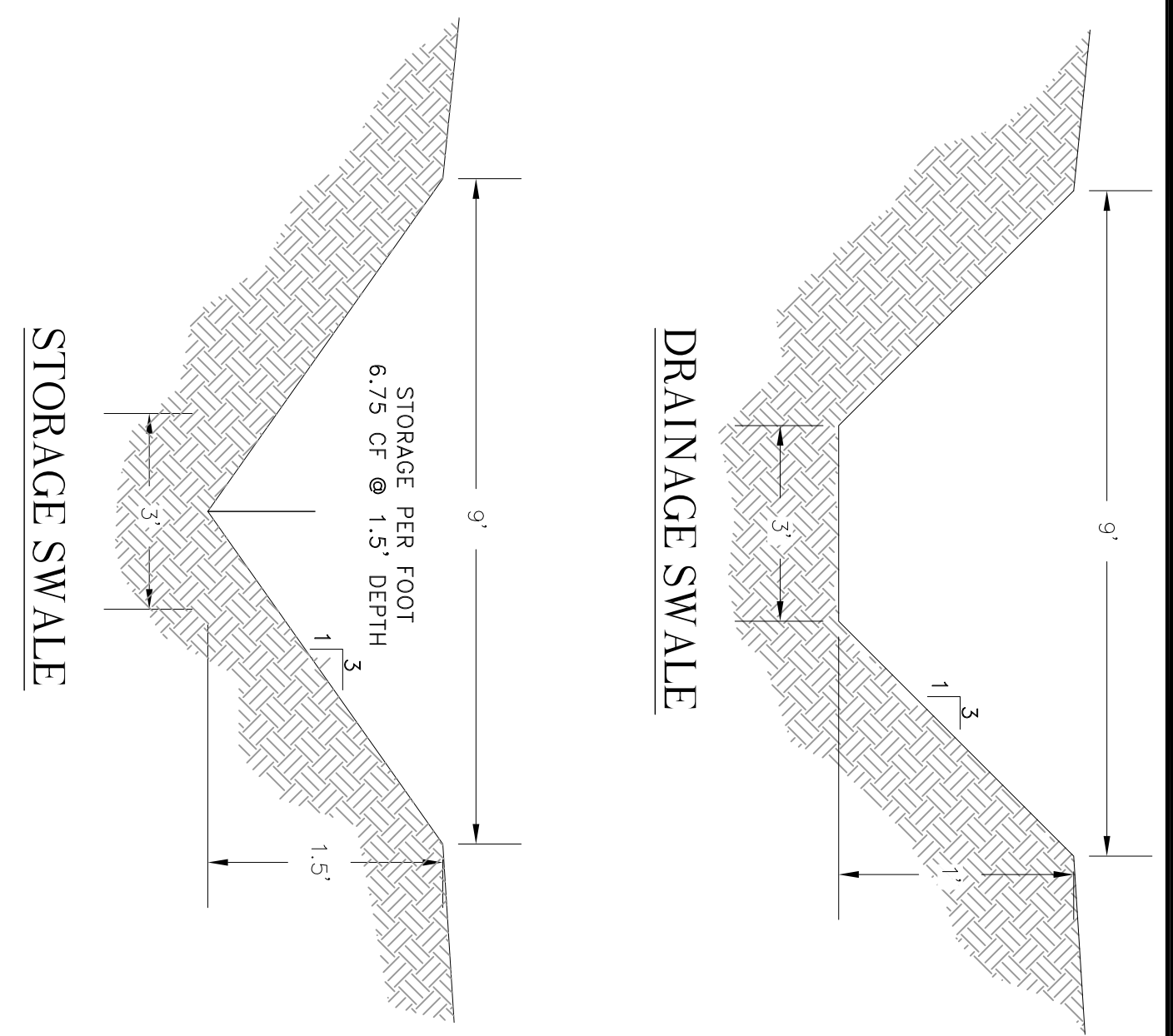
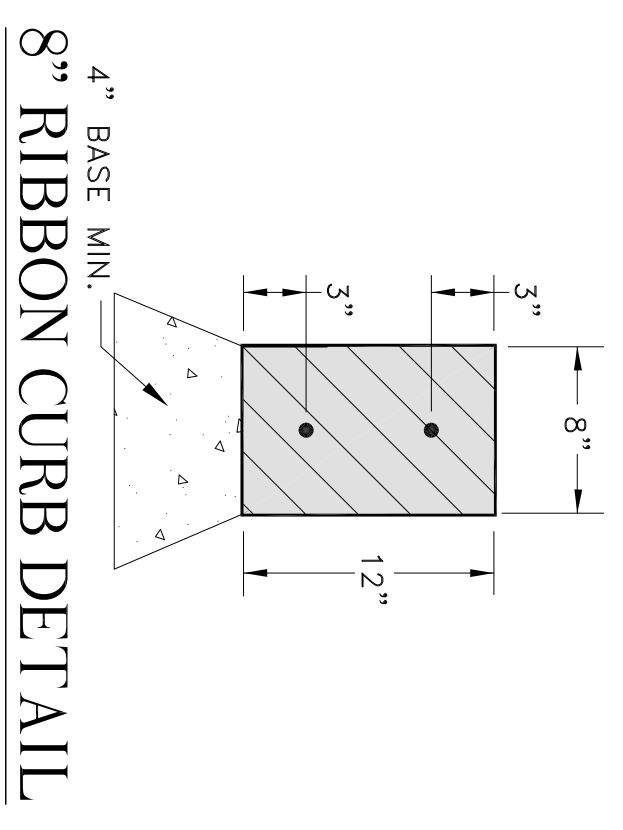
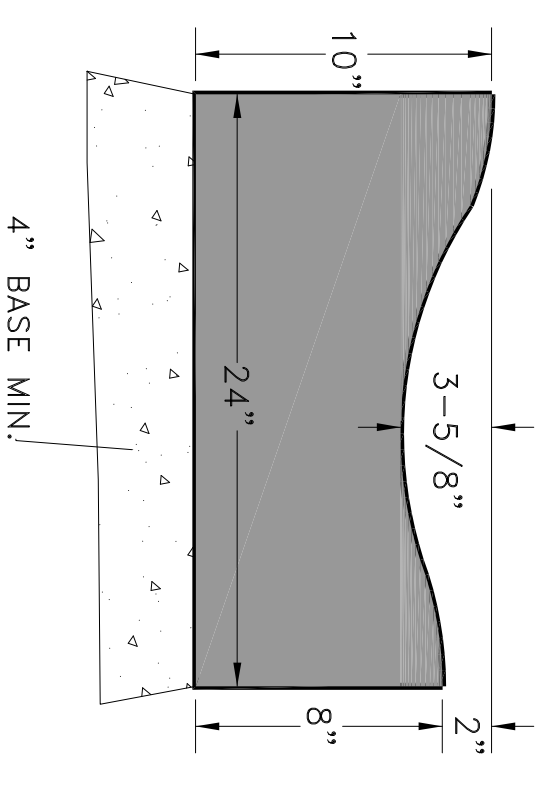


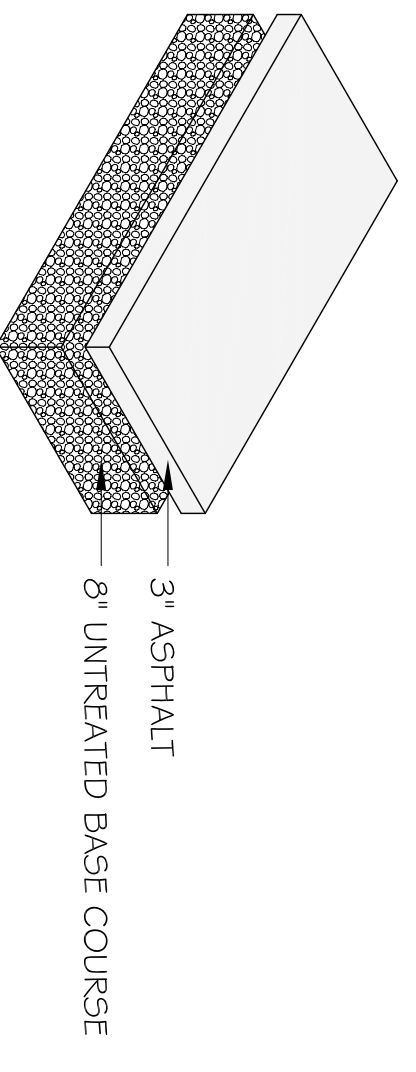
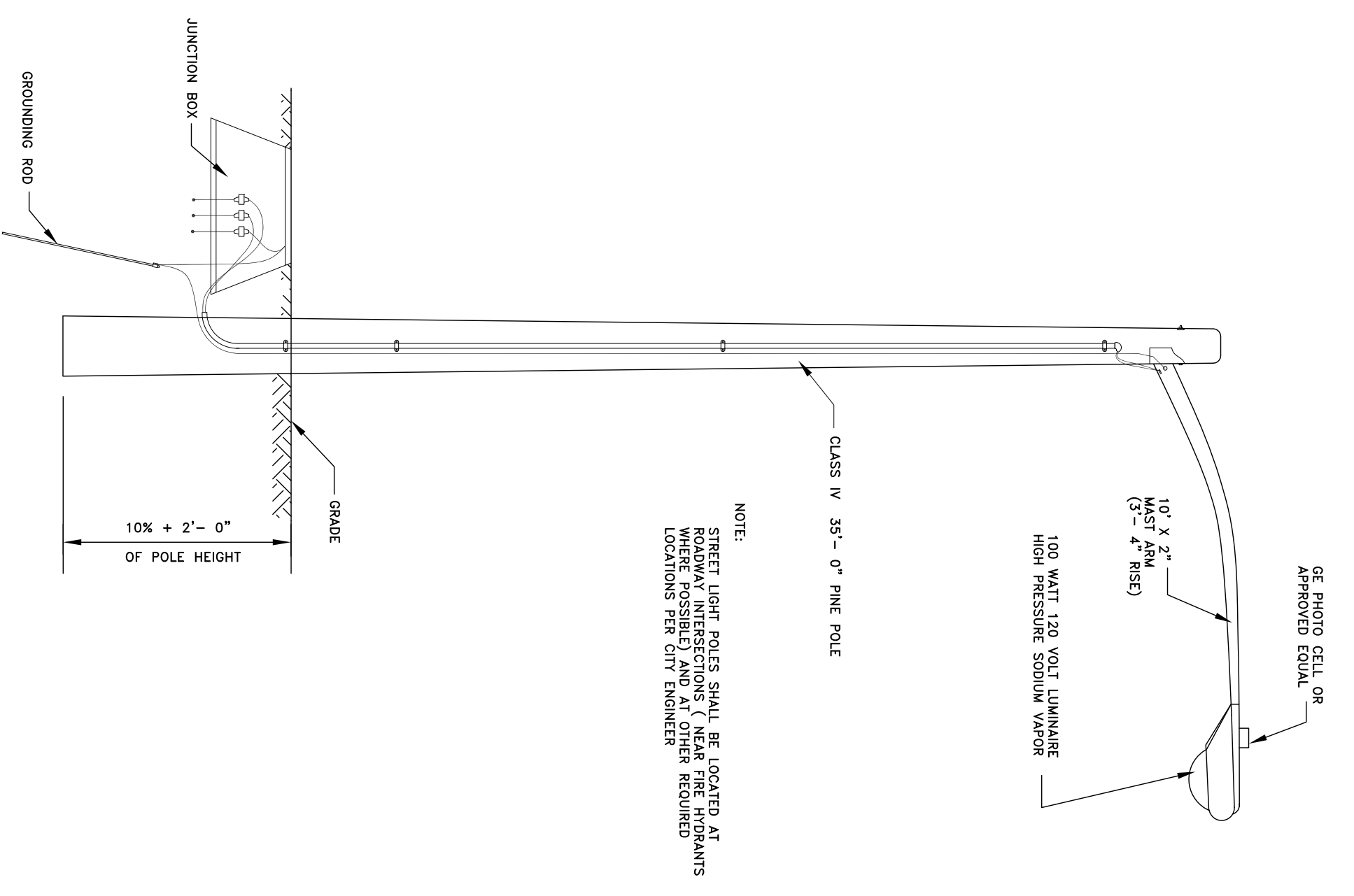
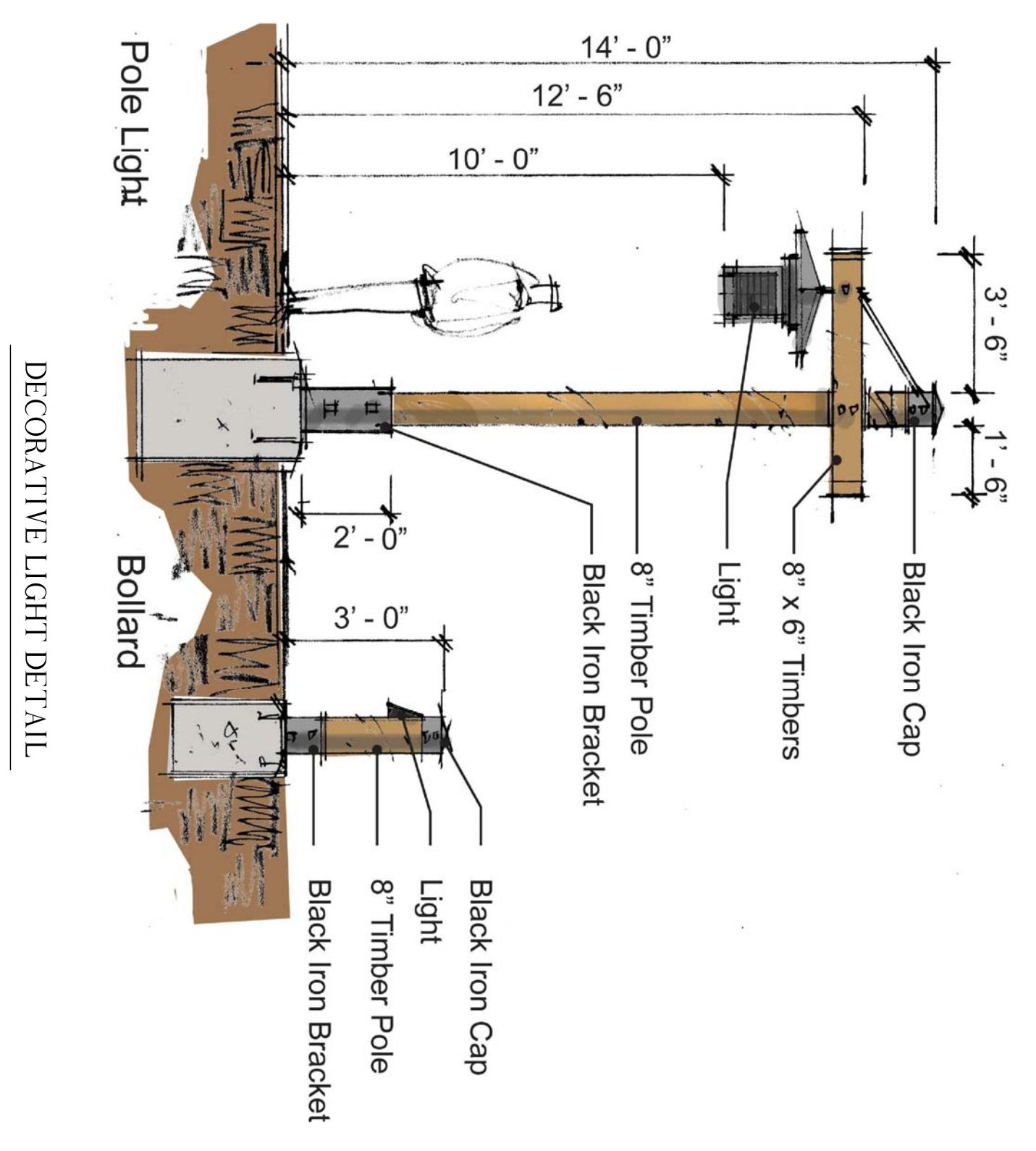
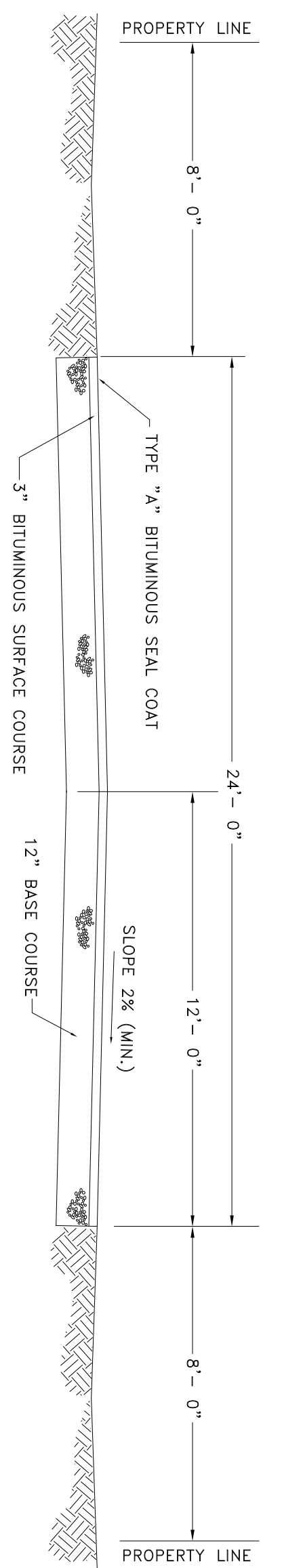
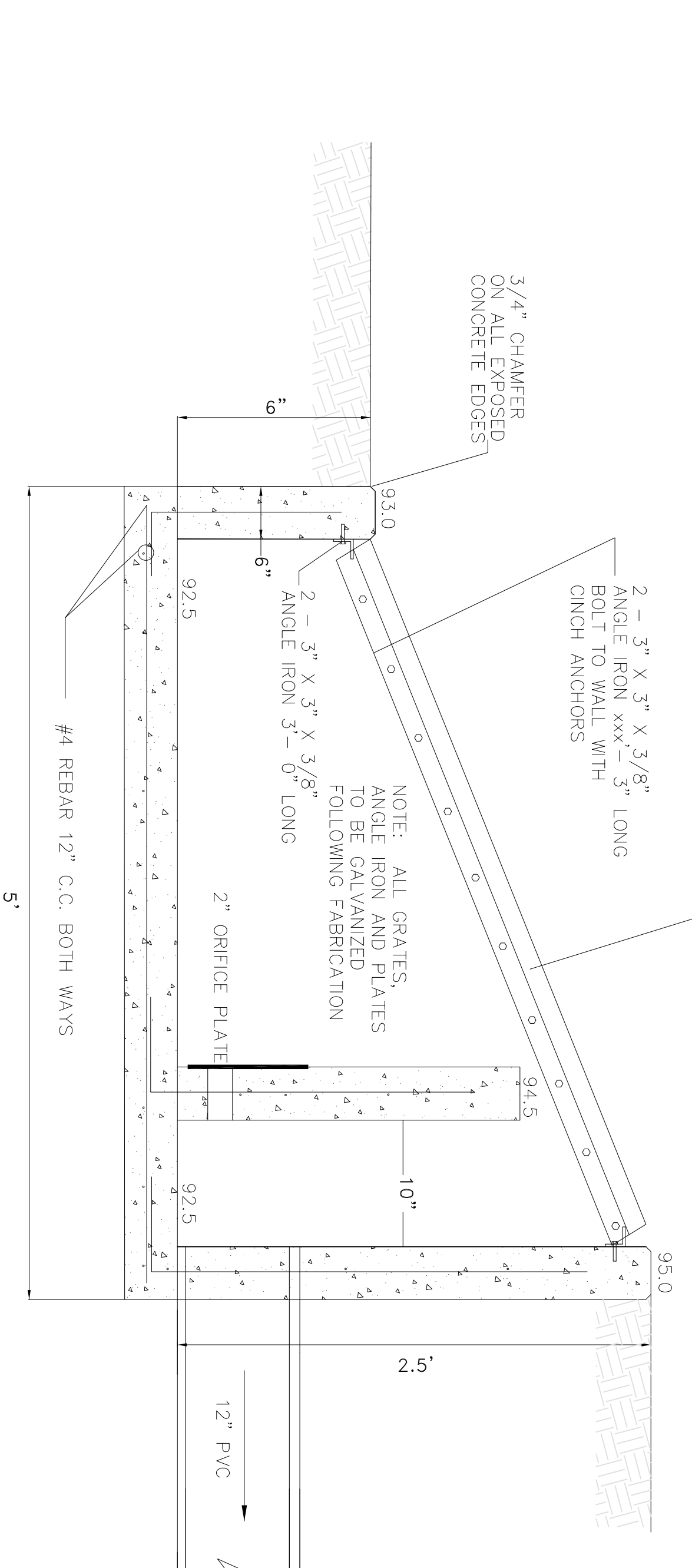
AREA 1 REQUIRED DETENTION, AT 0.02 CFS PER ACRE
 RELEASE RATE, IS 1,519 CF.
 THE AVAILABLE DETENTION IN AREA 1 IS 1650 CF.
 THE TOTAL SITE RELEASE RATE = 0.1 CFS PER ACRE OR 0.11 CFS.
 AREA 1 IS RESTRICTED TO 0.04 CFS PER ACRE RELEASE RATE AND
 AREA 2 IS RELEASED AT A RATE OF 0.17 CFS PER ACRE WITH A
 TOTAL COMBINED SITE RELEASE OF 0.11 CFS.

AREA 1 - DETENTION



AREA 2 HAS 114 LF OF STORAGE SWALE
 AT 1.5' FT OF DEPTH THE AVAILABLE DETENTION IS 770 CF
 THE REQUIRED DETENTION FOR AREA 2 WITH A 0.09 CFS PER ACRE
 RELEASE RATE IS 768 CF
 THE TOTAL SITE RELEASE RATE = 0.1 CFS PER ACRE OR 0.11 CFS.
 AREA 1 IS RESTRICTED TO 0.04 CFS PER ACRE RELEASE RATE AND
 AREA 2 IS RELEASED AT A RATE OF 0.17 CFS PER ACRE WITH A
 TOTAL COMBINED SITE RELEASE OF 0.11 CFS.

AREA 2 - DETENTION

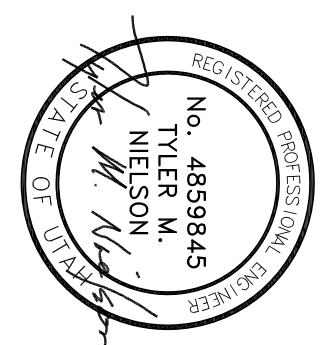


NOTE: ALL CONSTRUCTION TO CONFORM TO WEBER COUNTY STANDARDS AND SPECIFICATIONS.

DEVELOPER
 WOP WOM, LLC
 215 MERCHANT ST. #330
 HONOLULU, HI 96813
 PHONE: (808) 524-3551
 FAX: (808) 524-8903

Gardner Engineering
 5875 South Adams Ave. Parkway, Suite 200 • Ogden, UT 84405
 Phone (801) 476-0202 • Fax (801) 476-0066

WOP WOM LLC
 EDEN CENTER
 DETAILS
 EDEN CITY, WEBER COUNTY, UTAH



REVISIONS	
DATE	DESCRIPTION

SCALE: NOT TO SCALE
 DATE: DECEMBER 2011
 DESIGN: TMN/SCC
 DRAWN: RC/SCC
 CHECKED: TMN

5
 5