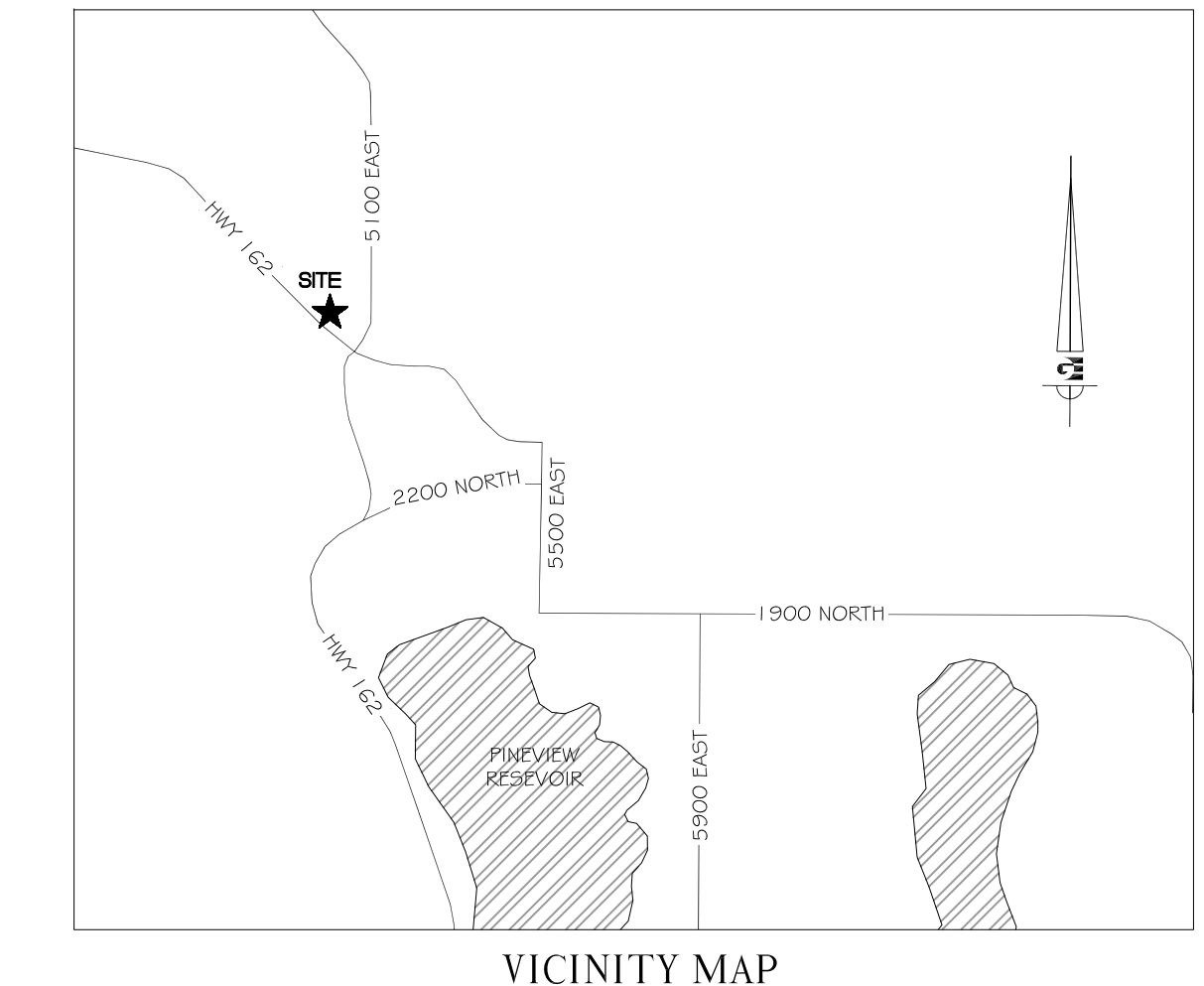


# GRADING & DRAINAGE PLAN

## EDEN CENTER

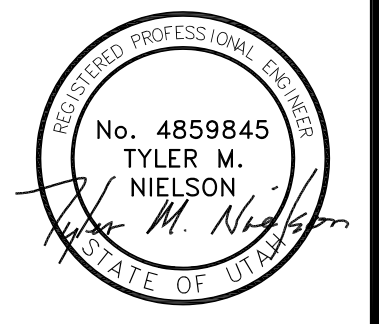
PART OF THE NORTHWEST QUARTER OF  
SECTION 34 T7N, R1E, SLB & M, U.S. SURVEY  
EDEN CITY, WEBER COUNTY, UTAH  
DECEMBER 2011

LOT 2  
LITTLE BEAR SUBDIVISION  
CV-2  
.92 ACRES



SCALE: 1" = 20'  
DATE: DECEMBER 2011  
DESIGN: TMN/RC/SCC  
DRAWN: RC  
CHECKED: TMN

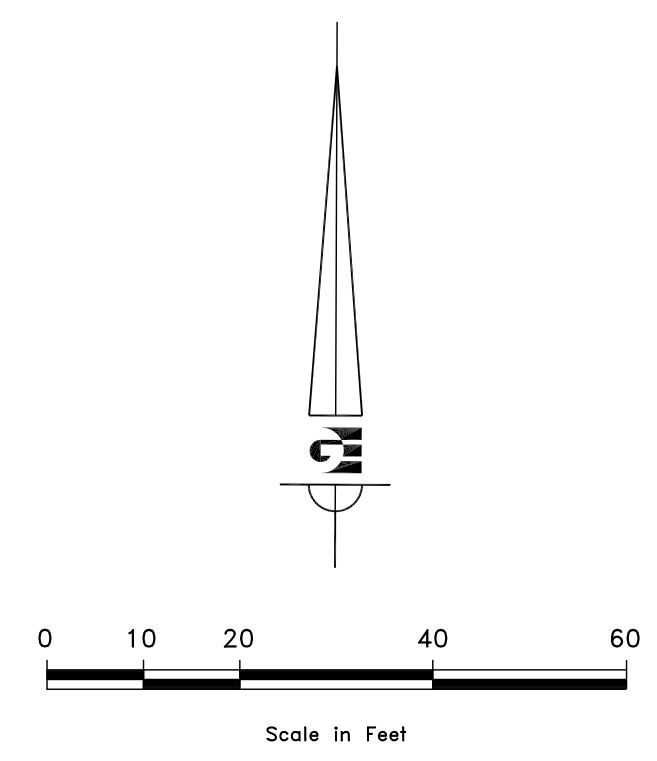
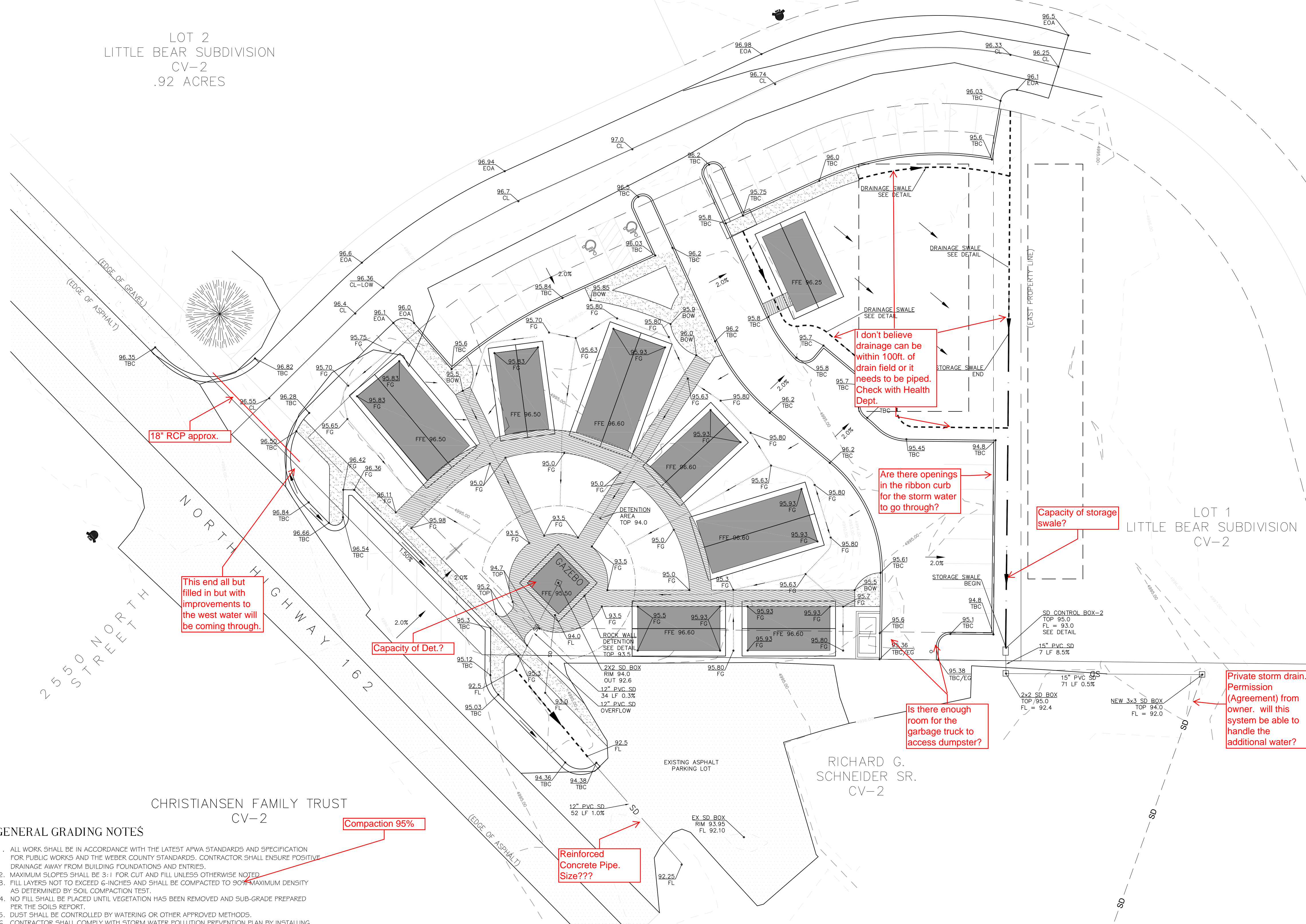
REVISIONS	DATE	DESCRIPTION



WOP WOM LLC  
EDEN CENTER  
GRADING PLAN  
EDEN CITY, WEBER COUNTY, UTAH

**Gardner Engineering**  
9876 South Adams Ave., Parkway, Suite 200, Ogden, UT 84405  
Phone: (801) 476-9884 Fax: (801) 476-9889

2  
5



**LEGEND**

---	EASEMENT LINE
---	PROPERTY LINE
---	PROPOSED STORM DRAIN
---	EXISTING STORM DRAIN
---	DRAINAGE DIRECTION
---	DRAINAGE SWALE
---	STORAGE SWALE
---	TOP BACK OF CURB
---	EXISTING GROUND
---	FINISH GROUND
---	BACK OF WALK
---	EDGE OF ASPHALT
---	FLOW LINE
---	CENTERLINE

- GENERAL GRADING NOTES**
- ALL WORK SHALL BE IN ACCORDANCE WITH THE LATEST APWA STANDARDS AND SPECIFICATION FOR PUBLIC WORKS AND THE WEBER COUNTY STANDARDS. CONTRACTOR SHALL ENSURE POSITIVE DRAINAGE AWAY FROM BUILDING FOUNDATIONS AND ENTRIES.
  - MAXIMUM SLOPES SHALL BE 3:1 FOR CUT AND FILL UNLESS OTHERWISE NOTED.
  - FILL LAYERS NOT TO EXCEED 6-INCHES AND SHALL BE COMPACTED TO 90% MAXIMUM DENSITY AS DETERMINED BY SOIL COMPACTION TEST.
  - NO FILL SHALL BE PLACED UNTIL VEGETATION HAS BEEN REMOVED AND SUB-GRADE PREPARED PER THE SOILS REPORT.
  - DUST SHALL BE CONTROLLED BY WATERING OR OTHER APPROVED METHODS.
  - CONTRACTOR SHALL COMPLY WITH STORM WATER POLLUTION PREVENTION PLAN BY INSTALLING BMP'S PRIOR TO COMMENCEMENT OF EXCAVATION ACTIVITIES. CONTACT THE COUNTY INSPECTOR FOR INSPECTION.
  - ALL RECOMMENDATIONS OF THE GEOTECHNICAL REPORT AND ALL SUBSEQUENT REPORTS, ADDENDUM ETC. SHALL BE CONSIDERED A PART OF THIS GRADING PLAN AND SHALL BE COMPLIED WITH.
  - THE CONTRACTOR SHALL CONTACT BLUE STAKES FOR LOCATION MARKING PRIOR TO COMMENCING EXCAVATION ACTIVITIES.
  - WEBER COUNTY MAY REQUIRE A PRE-CONSTRUCTION MEETING BEFORE A PERMIT IS ISSUED.
  - STREETS ADJACENT TO THE PROJECT SHALL BE CLEAN AT ALL TIMES.
  - CONTRACTOR IS RESPONSIBLE FOR ARRANGING FOR ALL REQUIRED INSPECTIONS.
  - PRIOR TO TAKING WATER FROM A FIRE HYDRANT, THE CONTRACTOR SHALL MAKE ARRANGEMENTS WITH WATER UTILITY TO OBTAIN A WATER METER.
  - ELEVATIONS SHOWN ON BUILDINGS ARE FINISHED FLOOR LOWEST LEVEL.

<b>DRAINAGE AREA 1</b>	<b>DRAINAGE AREA 2</b>	<b>TOTAL DRAINAGE AREA</b>
HARD SURFACE BUILDING LANDSCAPE	HARD SURFACE BUILDING LANDSCAPE	HARD SURFACE BUILDING LANDSCAPE
7,663 SF 6,203 SF 12,224 SF	12,915 SF 680 SF 8,607 SF	20,578 SF 6,968 SF 20,631 SF
RELEASE RATE 0.23 CFS/ACRE	RELEASE RATE 0.15 CFS/ACRE	RELEASE RATE 0.20 CFS/ACRE
REQUIRED DETENTION 1,648 CF	REQUIRED DETENTION 1,788 CF	REQUIRED DETENTION 3,348 CF

NOTE: ALL CONSTRUCTION TO CONFORM TO WEBER COUNTY STANDARDS AND SPECIFICATIONS.

**NOTICE:**  
EXISTING UTILITIES ARE SHOWN ON PLANS FOR THE CONVENIENCE OF THE CONTRACTOR ONLY. THE CONTRACTOR IS RESPONSIBLE FOR THE PROTECTION OF ALL UTILITIES. THE ENGINEER BEARS NO RESPONSIBILITY FOR THE UTILITIES NOT SHOWN OR SHOWN INCORRECTLY.

Call BLUE STAKES BEFORE YOU Dig  
1-800-662-4111  
UTAH PROFESSIONAL ENGINEER LICENSE #93000

**DEVELOPER**  
WOP WOM, LLC.  
ERIC SMITH  
212 MERCHANT ST. #330  
HONOLULU, HI 96813  
PHONE: (808) 524-3551  
FAX: (808) 524-8803

R:2312 - Wop Wom LLC DESIGN/PRODUCTION DWG: LITTLE BEAR LOT 3.dwg, Grading, 12/28/2011 10:07:19 AM, schristensen, 1:1