

2014-1-17
NONE
N:\SUBDIV\CAD\HORIZON_VILLAGE\SURVEY\PRUD

HORIZON NEIGHBORHOOD AT POWDER MOUNTAIN PRUD, AMENDMENT 1

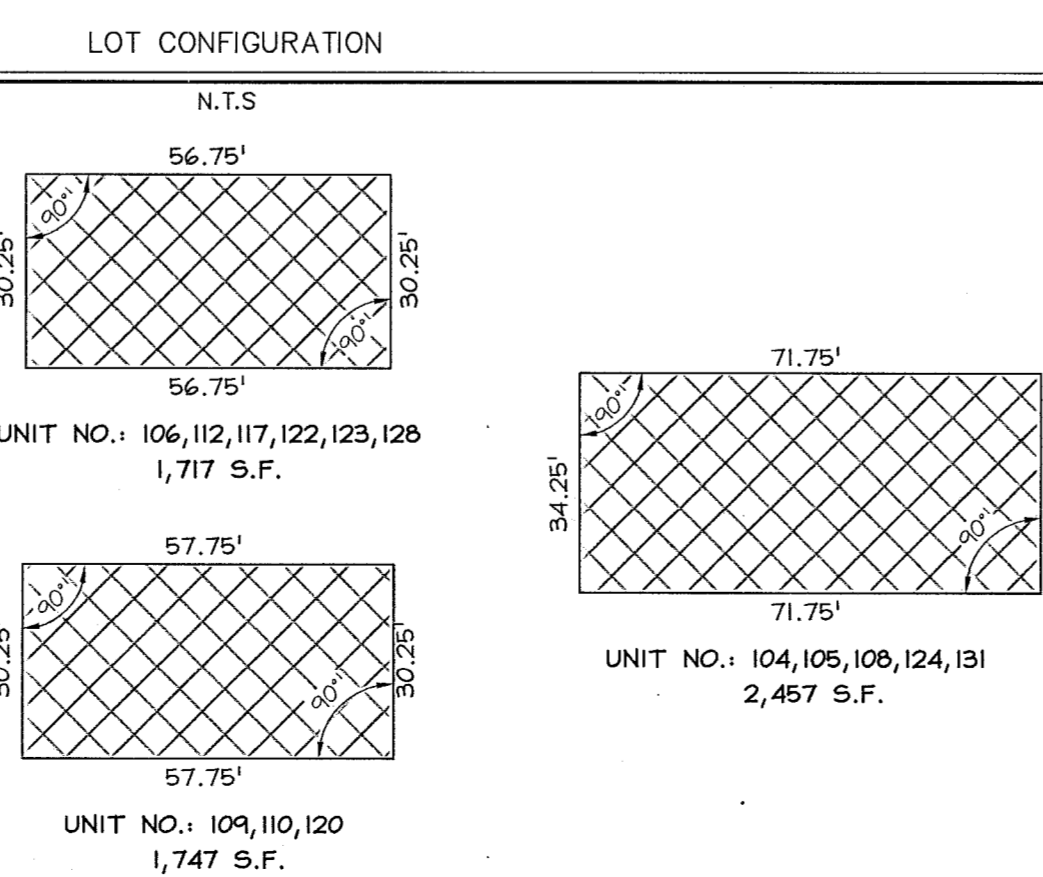
AMENDING THE HORIZON NEIGHBORHOOD AT POWDER MOUNTAIN PRUD, AND LOT 120 OF THE SUMMIT EDEN PHASE IA

LOCATED IN THE SOUTHEAST QUARTER OF SECTION 6,
TOWNSHIP 7 NORTH, RANGE 2 EAST,
SALT LAKE BASE AND MERIDIAN
JULY 2017

LINE	LENGTH	DIRECTION
L1	16.94'	S 19°06'23" E
L2	28.05'	S 51°39'43" E
L3	65.40'	S 75°11'50" E
L4	15.74'	S 58°03'57" E
L5	29.22'	S 57°28'38" E
L6	24.60'	S 51°10'02" E
L7	18.00'	N 49°30'22" E
L8	46.36'	N 25°34'15" W
L9	31.27'	S 72°04'07" E
L10	11.03'	N 89°09'58" W
L11	39.17'	S 44°00'56" E
L12	43.37'	S 37°43'04" E
L13	35.57'	S 80°03'09" E
L14	53.44'	N 75°50'35" W
L15	13.85'	N 89°09'58" W
L16	39.17'	S 44°00'56" E
L17	45.89'	S 75°38'19" E
L18	62.40'	S 60°29'00" E
L19	19.70'	S 01°11'18" W
L20	15.99'	N 89°09'58" W
L21	75.51'	S 65°46'25" E
L22	18.07'	S 116°48' E
L23	29.14'	N 74°45'15" E
L24	75.51'	S 65°46'25" E
L25	36.11'	N 62°36'36" E
L26	65.40'	S 75°11'50" E
L27	23.61'	S 77°46'25" E
L28	51.77'	S 75°43'19" W
L29	64.43'	N 76°44'27" W
L30	85.87'	N 80°10'55" E
L31	12.48'	S 64°10'38" W
L32	62.40'	S 60°29'00" E
L33	29.55'	N 59°48'01" E
L34	31.27'	S 72°04'07" E
L35	17.05'	S 77°46'25" E
L36	16.37'	S 64°10'38" W
L37	37.57'	S 31°37'21" E
L38	73.05'	S 68°12'18" E
L39	20.98'	S 77°46'25" E
L40	60.62'	N 75°00'13" E
L41	26.12'	S 14°59'47" E
L42	9.25'	S 75°00'13" W
L43	26.12'	N 14°59'47" W
L44	7.88'	N 75°00'13" E
L45	26.13'	S 14°59'47" E
L46	9.25'	S 75°00'13" W
L47	26.13'	N 14°59'47" W
L48	1.87'	N 75°00'13" E
L49	38.13'	N 14°59'47" W
L50	9.25'	S 75°00'13" W
L51	38.13'	S 14°59'47" E
L52	38.13'	N 14°59'47" W
L53	9.25'	S 75°00'13" W
L54	38.13'	S 14°59'47" E
L55	46.63'	N 75°00'13" E
L56	7.87'	N 75°00'13" E
L57	32.13'	S 14°59'47" E
L58	9.25'	S 75°00'13" W
L59	32.13'	N 14°59'47" W
L60	60.63'	N 75°00'13" E
L61	38.13'	S 14°59'47" E
L62	9.25'	S 75°00'13" W
L63	38.12'	N 14°59'47" W
L64	46.63'	N 75°00'13" E
L65	38.13'	S 14°59'47" E
L66	9.25'	S 75°00'13" W

LINE	LENGTH	DIRECTION
L67	38.13'	N 14°59'47" W
L68	36.13'	N 14°59'47" W
L69	9.25'	N 75°00'13" E
L70	36.13'	S 14°59'47" E
L71	21.12'	N 75°00'13" E
L72	7.88'	N 75°00'13" E
L73	32.12'	S 14°59'47" E
L74	9.25'	S 75°00'13" W
L75	32.12'	N 14°59'47" W
L76	60.62'	N 75°00'13" E
L77	38.13'	S 14°59'47" E
L78	9.25'	S 75°00'13" W
L79	38.13'	N 14°59'47" W
L80	21.13'	N 75°00'13" E
L81	7.13'	N 14°59'47" W
L82	9.25'	N 75°00'13" E
L83	7.13'	S 14°59'47" W
L84	46.63'	N 75°00'13" E
L85	38.12'	N 14°59'47" W
L86	9.25'	S 75°00'13" W
L87	38.12'	N 14°59'47" W
L88	9.25'	S 75°00'13" W
L89	32.12'	S 14°59'47" E
L90	32.12'	N 14°59'47" W
L91	21.12'	N 75°00'13" E
L92	14.37'	N 75°00'13" E
L93	7.13'	N 14°59'47" W
L94	9.25'	N 75°00'13" E
L95	7.13'	S 14°59'47" W
L96	9.25'	N 75°00'13" E
L97	26.12'	N 14°59'47" W
L98	26.12'	S 14°59'47" W
L99	46.63'	N 75°00'13" E
L100	15.12'	N 75°00'13" E
L101	38.12'	N 14°59'47" W
L102	9.25'	S 75°00'13" W
L103	38.12'	S 14°59'47" W
L104	46.63'	N 75°00'13" E
L105	38.13'	N 14°59'47" W
L106	9.25'	S 75°00'13" W
L107	38.13'	S 14°59'47" E
L108	60.62'	S 75°00'13" W
L109	38.12'	S 14°59'47" E
L110	9.25'	S 75°00'13" W
L111	38.12'	N 14°59'47" W
L112	38.13'	S 14°59'47" E
L113	9.25'	S 75°00'13" W
L114	38.13'	N 14°59'47" W
L115	1.87'	N 75°00'13" E
L116	46.62'	N 75°00'13" E
L117	26.13'	S 14°59'47" E
L118	9.25'	S 75°00'13" W
L119	26.13'	N 14°59'47" W
L120	38.13'	S 14°59'47" E
L121	9.25'	N 75°00'13" E
L122	38.13'	S 14°59'47" E
L123	15.13'	S 75°00'13" W
L124	46.62'	S 75°00'13" W
L125	38.13'	S 14°59'47" W
L126	9.25'	S 75°00'13" W
L127	38.13'	S 14°59'47" W
L128	38.13'	N 14°59'47" W
L129	9.25'	N 75°00'13" E
L130	38.13'	S 14°59'47" W
L131	21.12'	N 75°00'13" E
L132	46.63'	S 75°00'13" W

LINE	LENGTH	DIRECTION
L133	46.12'	S 14°59'47" E
L134	9.25'	S 75°00'13" W
L135	46.12'	N 14°59'47" W
L136	38.13'	S 14°59'47" E
L137	9.25'	S 75°00'13" W
L138	38.13'	N 14°59'47" W
L139	1.88'	N 75°00'13" E
L140	46.62'	S 75°00'13" W
L141	46.13'	S 14°59'47" E
L142	9.25'	S 75°00'13" W
L143	46.13'	N 14°59'47" W
L144	46.13'	S 14°59'47" E
L145	9.25'	N 75°00'13" E
L146	46.13'	S 14°59'47" E
L147	15.12'	N 75°00'13" E
L148	15.12'	N 75°00'13" E
L149	38.13'	S 14°59'47" E
L150	9.25'	S 75°00'13" W
L151	38.13'	N 14°59'47" W
L152	60.62'	S 75°00'13" W
L153	38.13'	S 14°59'47" E
L154	9.25'	S 75°00'13" W
L155	38.13'	N 14°59'47" W
L156	38.13'	S 14°59'47" E
L157	9.25'	S 75°00'13" W
L158	38.13'	N 14°59'47" W
L159	1.87'	N 75°00'13" E



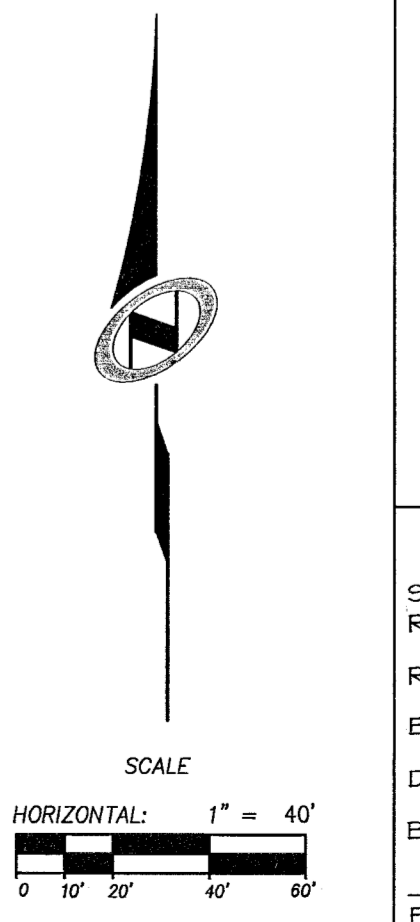
CURVE	LENGTH	RADIUS	DELTA	CHORD LENGTH	CHORD BEARING
C1	18.63'	100.00'	10°40'28"	18.60'	S34° 29' 03"W
C2	21.32'	100.00'	12°12'51"	21.28'	S45° 55' 43"W

UNIT	ADDRESS	UNIT	ADDRESS
102	7763 E. HORIZON RUN	117	7791 E. HORIZON RUN
103	7764 E. HORIZON RUN	118	7792 E. HORIZON RUN
104	7765 E. HORIZON RUN	119	7793 E. HORIZON RUN
105	7766 E. HORIZON RUN	120	7794 E. HORIZON RUN
106	7767 E. HORIZON RUN	121	7795 E. HORIZON RUN
107	7768 E. HORIZON RUN	122	7796 E. HORIZON RUN
108	7769 E. HORIZON RUN	123	7797 E. HORIZON RUN
109	7770 E. HORIZON RUN	124	7798 E. HORIZON RUN
110	7771 E. HORIZON RUN	125	7799 E. HORIZON RUN
111	7772 E. HORIZON RUN	126	7800 E. HORIZON RUN
112	7773 E. HORIZON RUN	127	7801 E. HORIZON RUN
113	7774 E. HORIZON RUN	128	7802 E. HORIZON RUN
114	7775 E. HORIZON RUN	129	7803 E. HORIZON RUN
115	7776 E. HORIZON RUN	130	7804 E. HORIZON RUN
116	7777 E. HORIZON RUN	131	7805 E. HORIZON RUN

LEGEND

- BOUNDARY LINE
- LOT LINE
- SECTION LINE
- QUARTER SECTION LINE
- ADJOINER SECTION LINES
- NO ACCESS LINE
- CALCULATED SECTION CORNER AS NOTED
- SECTION CORNER AS NOTED
- STREET MONUMENT
- SET REBAR WITH PLASTIC CAP STAMPED "TALISMAN"
- PRIVATE LOT
- LIMITED COMMON AREA
- COMMON AREA
- PRUD LOT NUMBER

SMHG PHASE I, LLC.
3632 N. WOLF CREEK DR.
EDEN, UT, 84310



Sheet 2 of 2

TALISMAN
CIVIL CONSULTANTS
5217 SOUTH STATE STREET
SUITE 200
MURRAY, UT 84107
801.743.1300

RECORDED #
STATE OF UTAH, COUNTY OF WEBER,
RECORDED AND FILED AT THE
REQUEST OF: SMHG PHASE I LLC
ENTRY NO: 2871558
DATE: 03-06-2017 TIME: 11:20
BOOK: 61 PAGE: 66-67

LEE H. KILTS
WEBER COUNTY RECORDER

81-67

