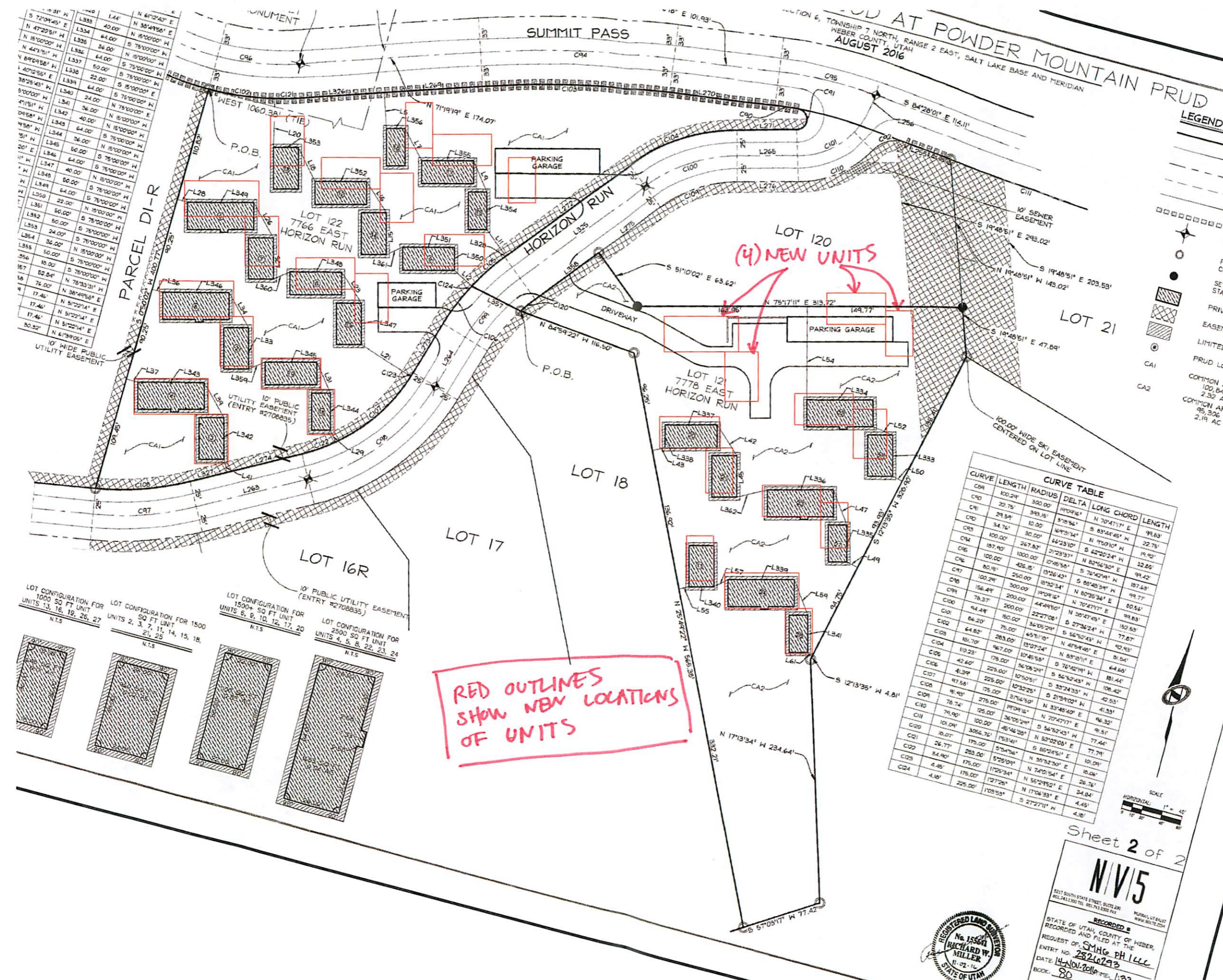


SECTION 6, TOWNSHIP 7 NORTH, RANGE 2 EAST, SALT LAKE BASE AND MERIDIAN
 WEBER COUNTY, UTAH
 AUGUST 2016



Sheet 2 of 2
NIV5
 3217 SOUTH STATE STREET, SALT LAKE CITY, UT 84119
 (801) 487-1300 FAX (801) 487-1300 FAX
 MURRAY, UT 84143
 WWW.NIV5.COM
 RECORDED &
 STATE OF UTAH, COUNTY OF WEBER,
 REQUESTED BY: SMHG PH LLC
 ENTRY NO: 2526293
 DATE: 14-NOV-2016 TIME: 1:33
 BOOK: 80

