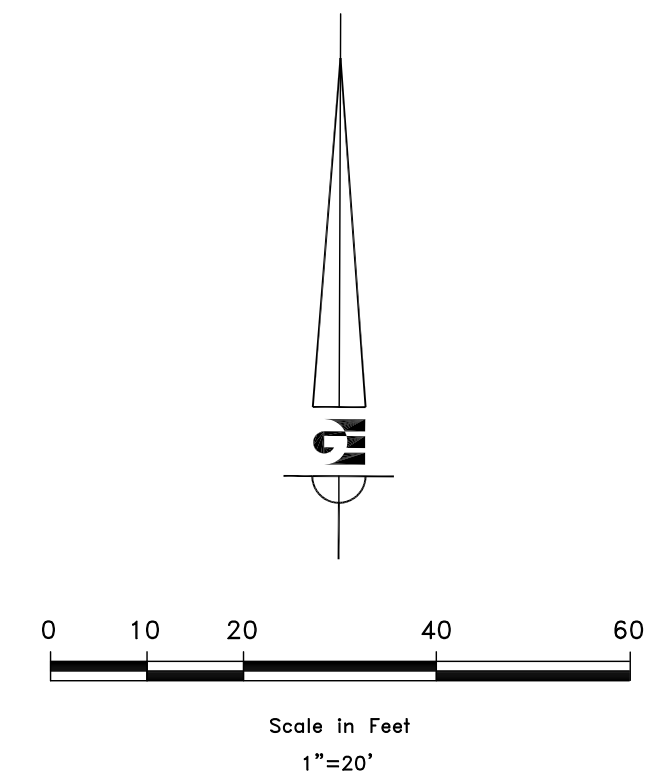
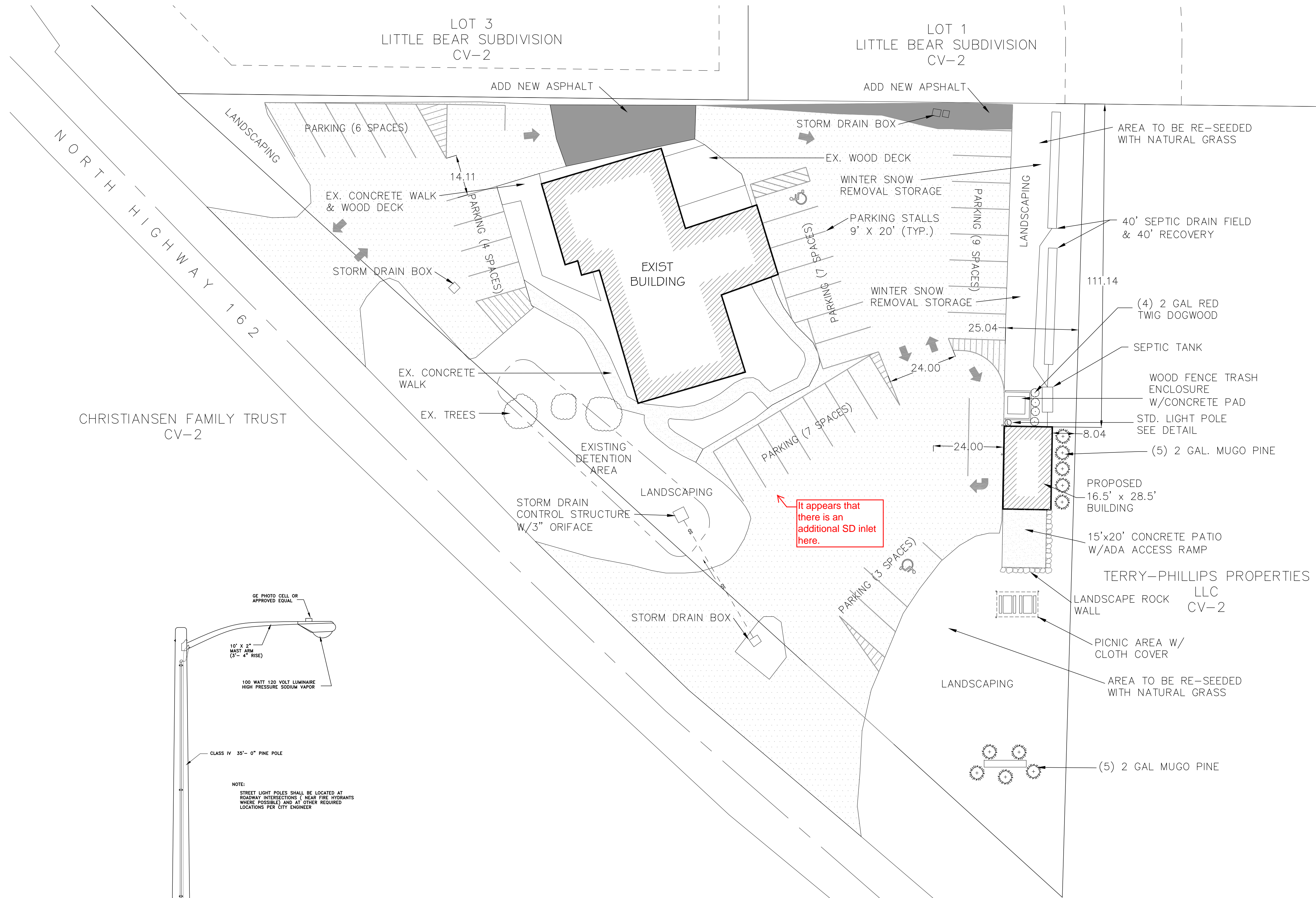


# SITE PLAN

## EDEN PROFESSIONAL CENTER

PART OF THE NORTHWEST 1/4 OF SECTION 34 T7N,  
R1E, SLB & M, U.S. SURVEY  
EDEN CITY, WEBER COUNTY, UTAH  
DECEMBER 2011



### DEVELOPMENT DATA

PARCEL NUMBER	22-046-0036
EXISTING ZONING	CV-2
PARCEL ACREAGE	.98 ACRES
HARD SURFACE AREA	2,104 SF (4.9%)
BUILDING AREA	4,280 SF (9.9%)
PARKING/ROAD AREA	21,728 SF (50.1%)
LANDSCAPE AREA	15,198 SF (35.1%)
PROPOSED PARKING	36 STALLS

### Eden Center Eden, Weber County, Utah

Lat=41.361 Long=-111.8291

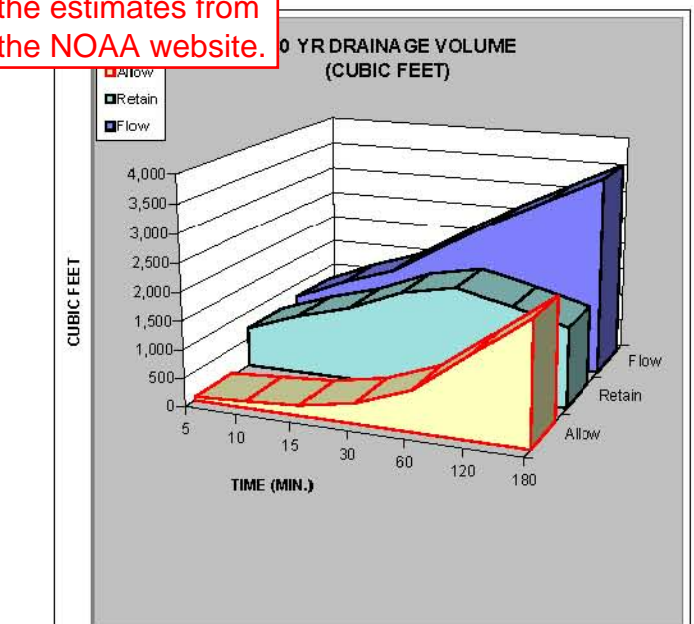
Areas	Sq. Ft.	Area	C
Hard Surface	21,004	0.5414	0.85
Building	4,280	0.0983	0.80
Landscape	15,198	0.3489	0.0
<b>Total/Weighted</b>	<b>40,482</b>	<b>0.9943</b>	<b>0.59</b>



Weber County only allows 0.1 cfs/acre discharge.

Rain fall intensities appear to be wrong. Please use the estimates from the NOAA website.

100yr	Release Vol (cf)	Inch /Hr	Total Vol 100 YEAR	Detain Vol (cf)	Difference
MIN	5	0.0	4.92	763	758
5	119	3.3	1,165	1,046	119
15	370	9.8	1,463	1,304	159
30	369	1.94	2,055	1,987	68
60	718	1.23	2,865	1,009	1,856
120	1,452	0.75	3,052	1,061	1,991
180	2,149	0.68	3,559	1,411	2,148
360	4,298	0.37	4,762	407	4,355
720	6,946	0.25	6,946	0	6,946
1440	7,117	0.14	7,117	0	7,117

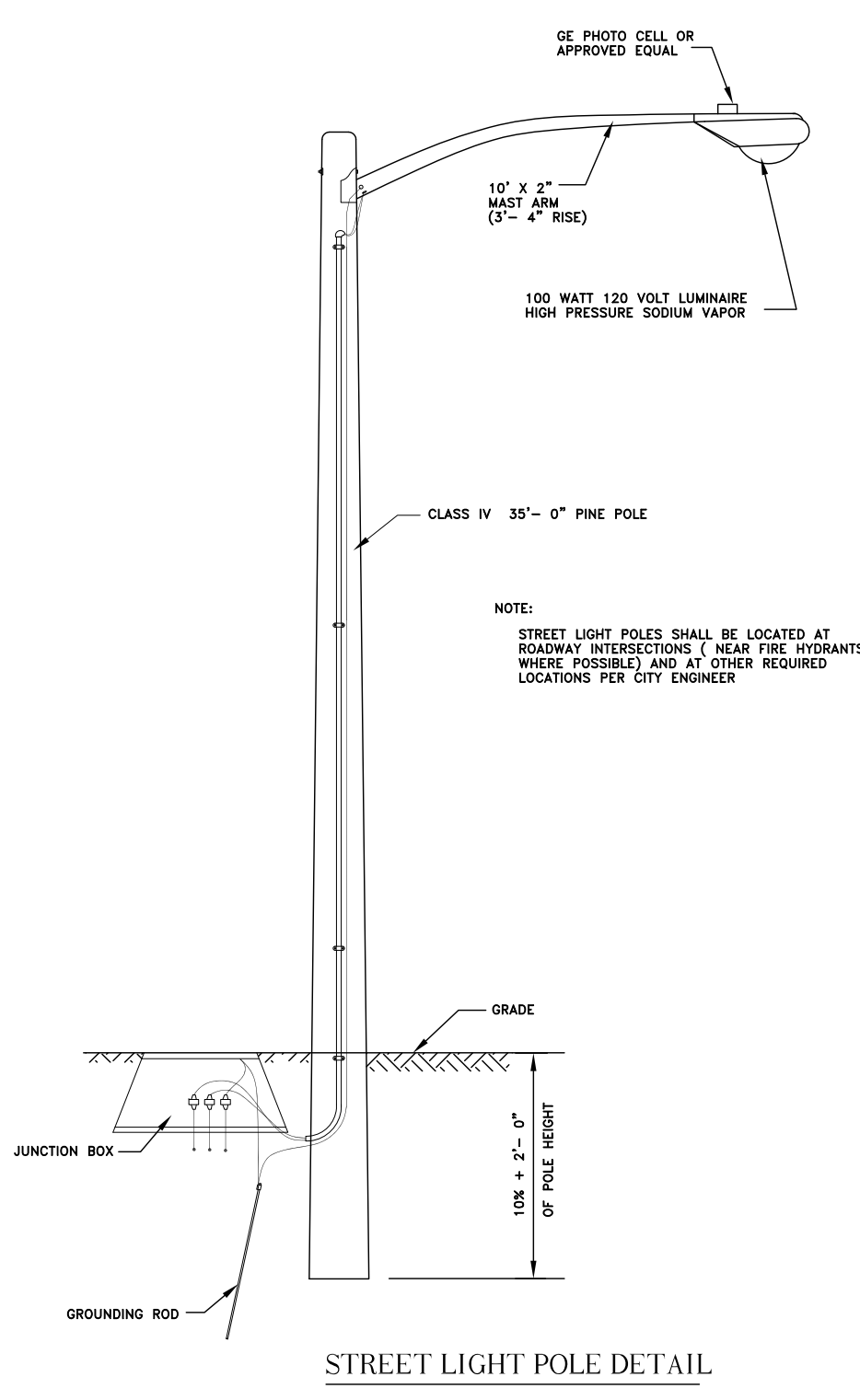


This says retained, but there are calculations for an orifice, meaning detained.

100 YEAR STORM RECOMMENDED MIN. VOLUME RETAINED: 1,889 CUBIC FEET

### Orifice Calculation

H = 3	Maximum water height to center of orifice (ft)
O = 0.20	Flowrate out of orifice (cfs)
Cc = 0.62	Coefficient of Contraction
Cv = 0.88	Coefficient of Velocity
Area = 0.024	Orifice Area (ft <sup>2</sup> )
Tt = 3.14	Gravitational Constant
d = 2	Orifice Diameter (in)



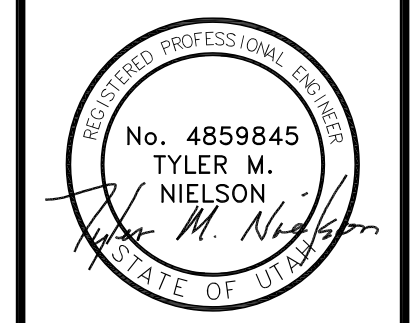
### DRAINAGE NOTES

1. DETENTION POND CAPACITY REQUIREMENT - 1,889 CF.
2. EXISTING DETENTION POND CAPACITY - APPROX. 2,277 CF.
3. ORIFACE IS CALCULATED TO BE 2" DIAMETER, TO REDUCE BLOCKAGE. SUGGESTED SIZE IS A 3" DIAMETER.

What size is the existing oriface?

NOTE: ALL CONSTRUCTION TO CONFORM TO EDEN CITY STANDARDS AND SPECIFICATIONS.

SCALE: 1" = 20'	DATE: DECEMBER 2011
DESIGN: TMN/SCC	DRAWN: SCC
CHECKED: TMN	



PAT BRENNAN  
 EDEN PROFESSIONAL CENTER  
 SITE PLAN  
 EDEN CITY, WEBER COUNTY, UTAH

**Gardner Engineering**  
 PLANNING  
 CIVIL ENGINEERING  
 ELECTRICAL ENGINEERING  
 ALTERNATIVE ENERGY  
 8875 South Adams Ave. Parkway, Suite 200 • Ogden, UT 84405  
 Phone (801) 476-0202 • Fax (801) 476-0096

DEVELOPER  
 PAT BRENNAN  
 EDEN, UTAH

R:0268 - Brennan Pat\101 - Eden Professional Center\DESIGN\PRODUCTION\DWG\EPC\_SitePlan.dwg, Site Plan, 12/12/2011 3:28:02 PM, schristensen, 1:1