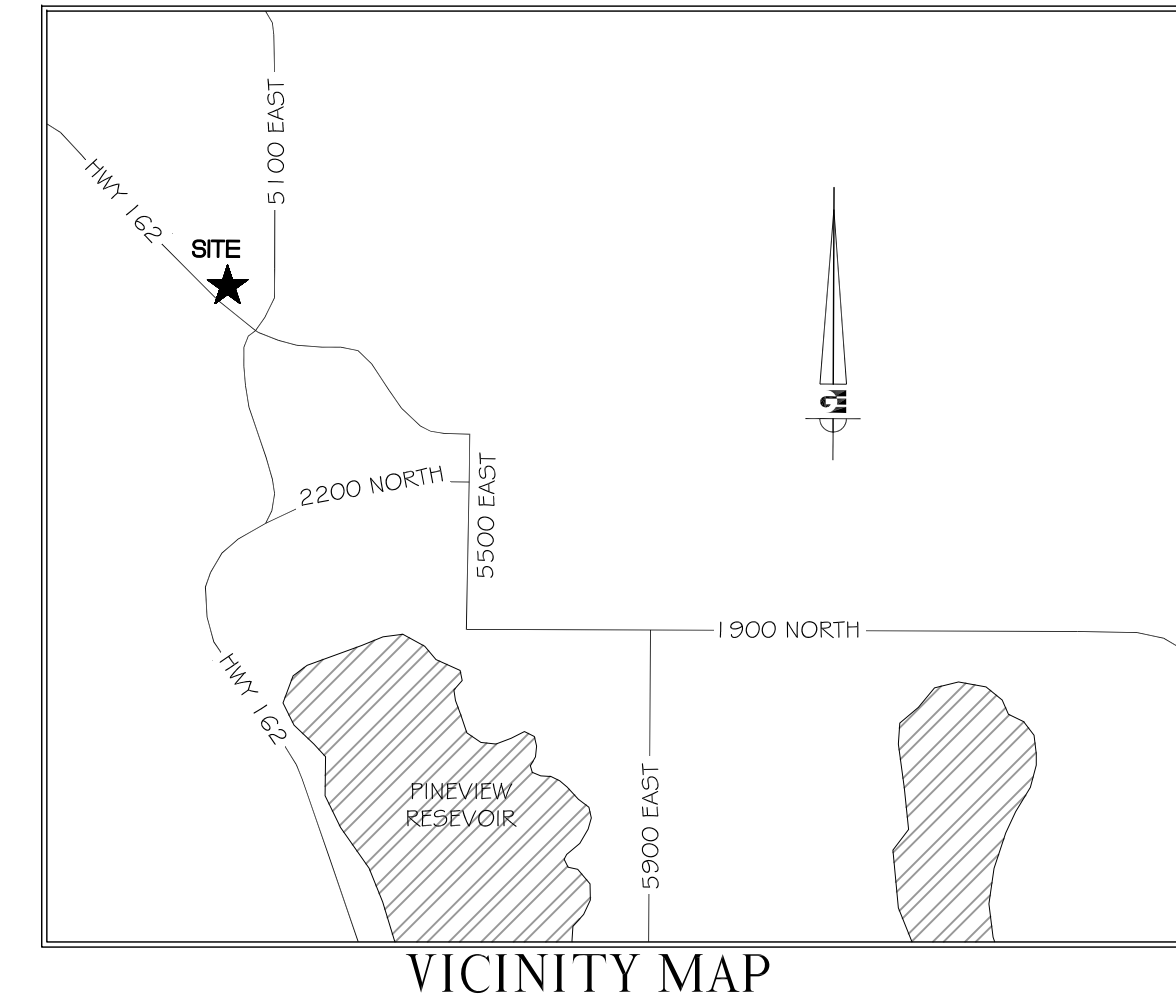


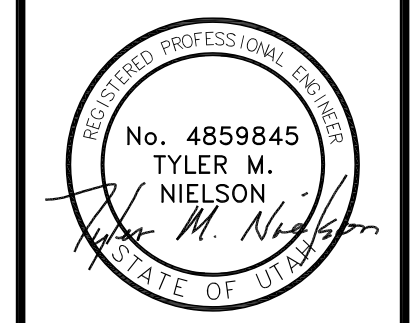
SITE PLAN
EDEN PROFESSIONAL CENTER
 PART OF THE NORTHWEST 1/4 OF SECTION 34 T7N,
 R1E, SLB & M, U.S. SURVEY
 EDEN CITY, WEBER COUNTY, UTAH
 DECEMBER 2011



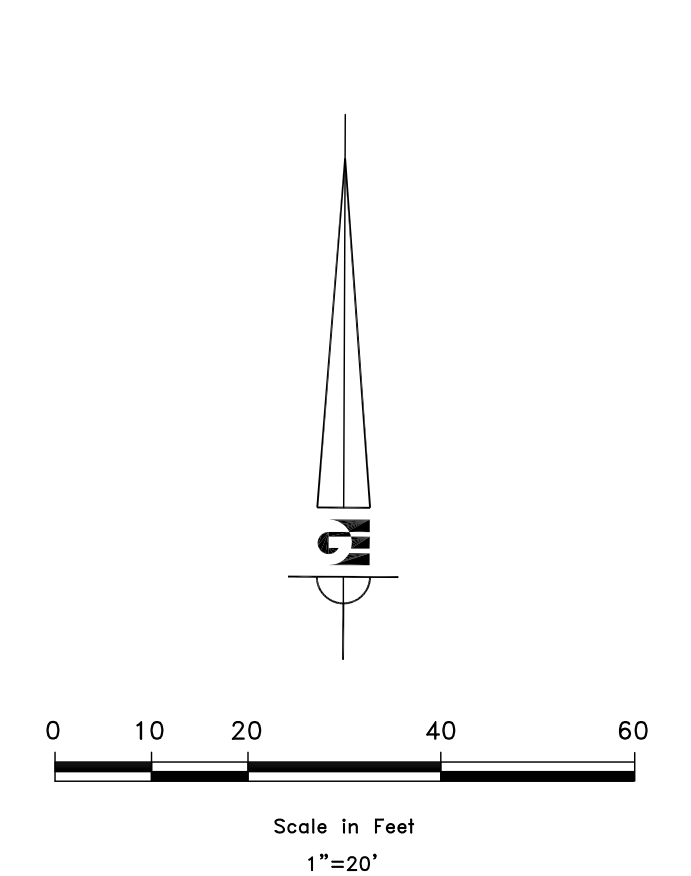
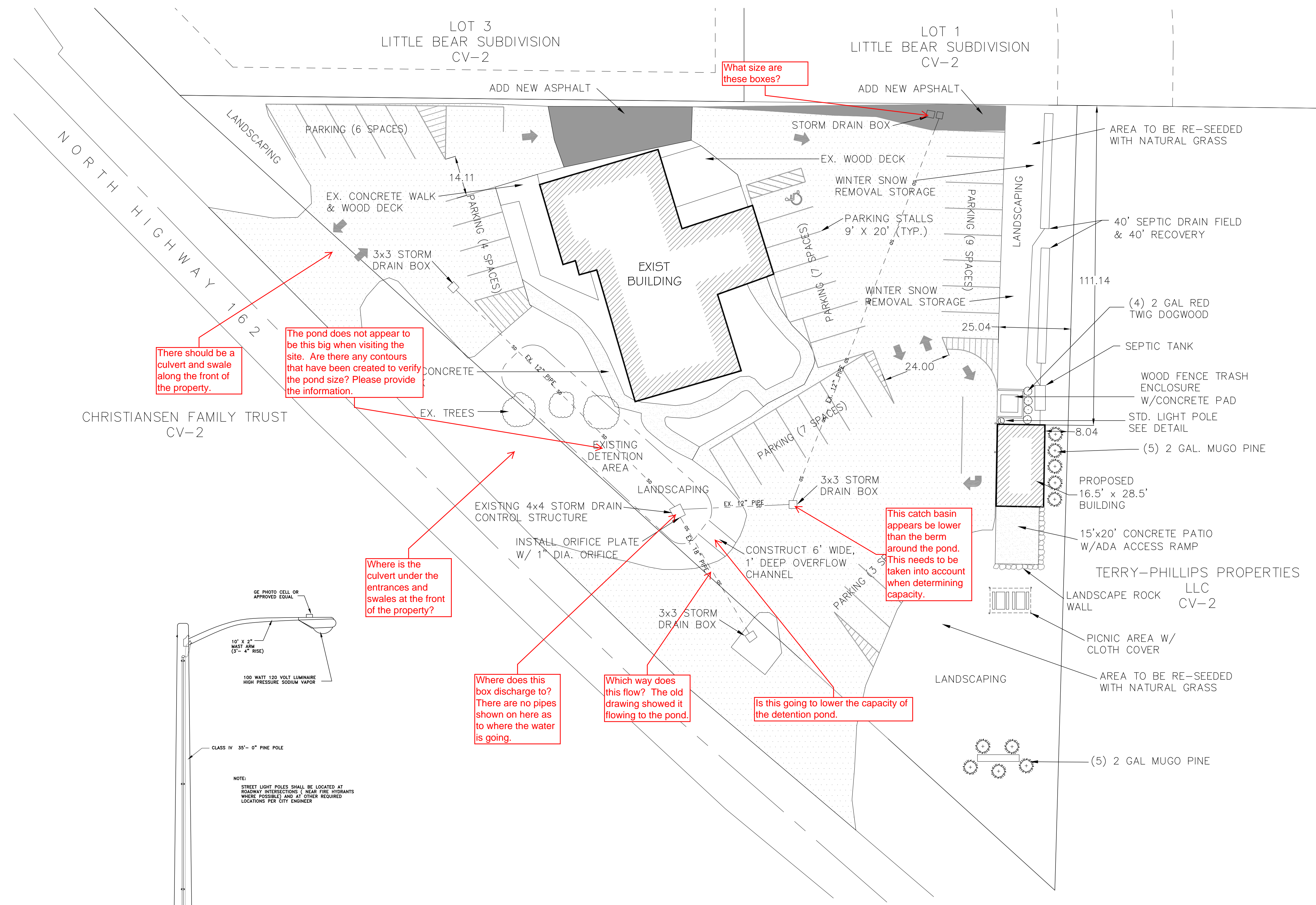
SCALE: 1" = 20'
 DATE: DECEMBER 2011
 DESIGN: TMN/SCC
 DRAWN: SCC
 CHECKED: TMN

REVISIONS	DESCRIPTION
DATE	

DWG.: SEE PLOT STAMP AT LEFT



PAT BRENNAN
EDEN PROFESSIONAL CENTER
SITE PLAN
 EDEN CITY, WEBER COUNTY, UTAH

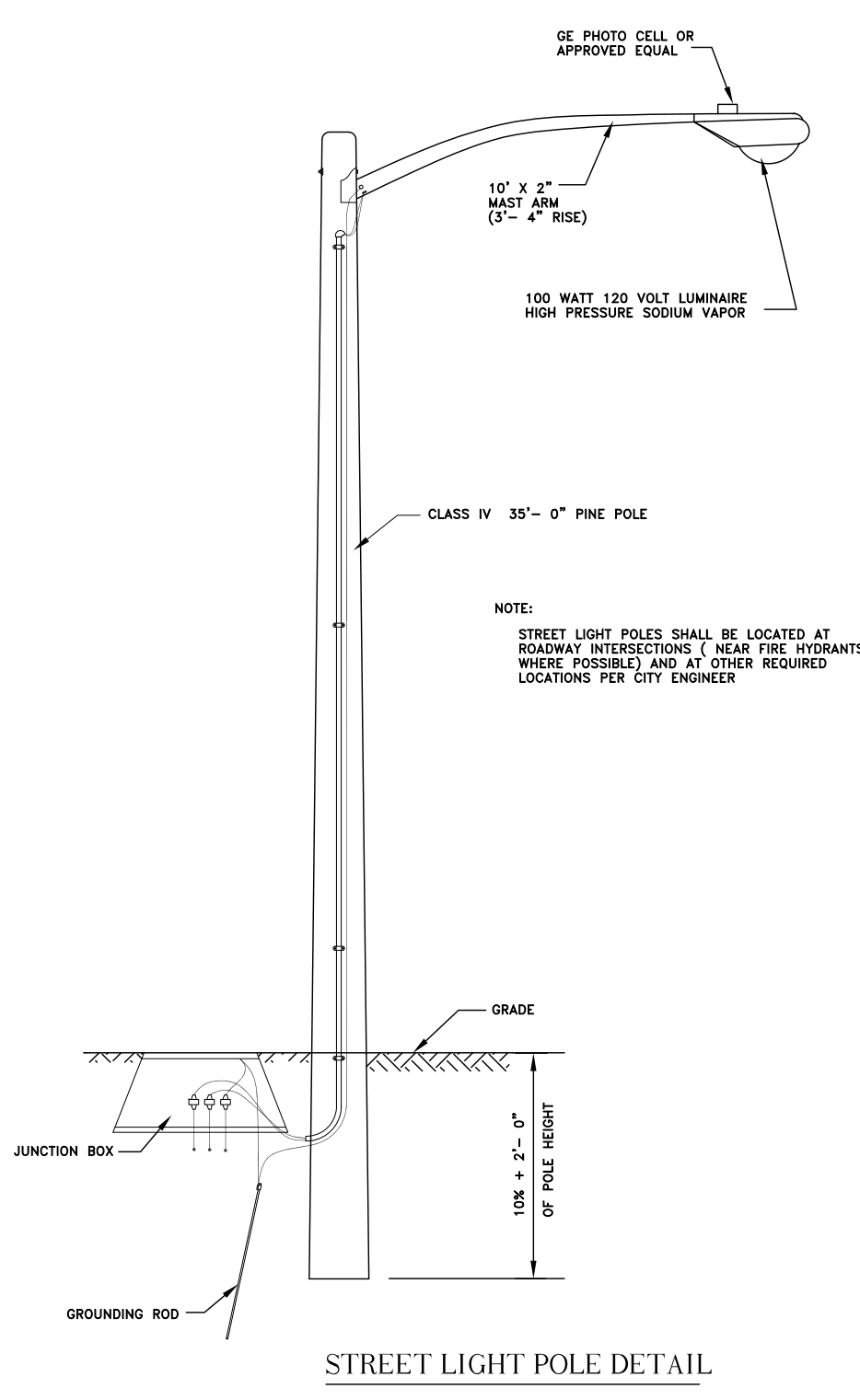
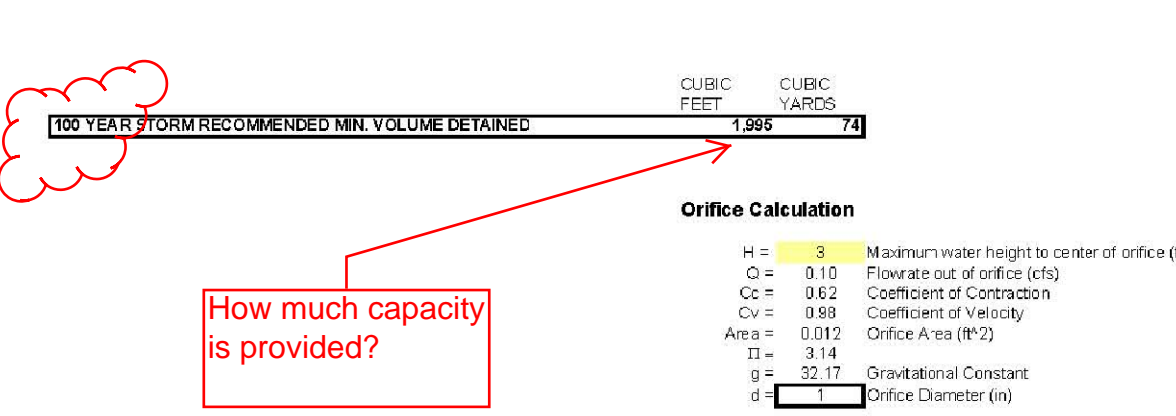
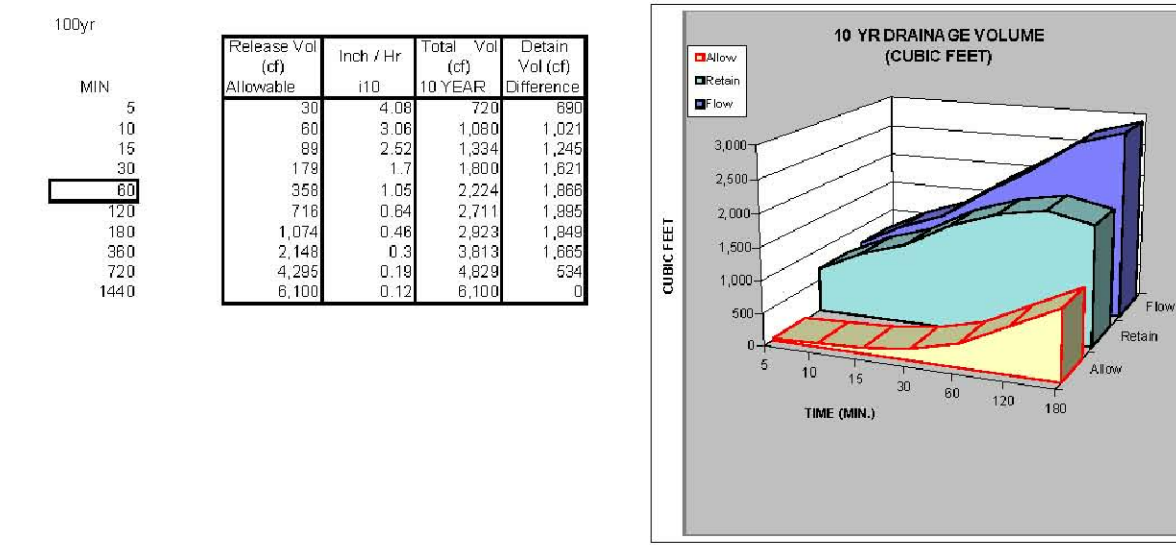


DEVELOPMENT DATA

PARCEL NUMBER	22-046-0036
EXISTING ZONING	CV-2
PARCEL ACREAGE	.98 ACRES
HARD SURFACE AREA	2,104 SF (4.9%)
BUILDING AREA	4,280 SF (9.9%)
PARKING/ROAD AREA	21,728 SF (50.1%)
LANDSCAPE AREA	15,198 SF (35.1%)
PROPOSED PARKING	36 STALLS

Eden Professional Center
 Eden, Weber County, Utah

Area	Sq. Ft.	Area	Area	C	Allow. Release Rate (cfs/acre)	C
Hard Surface	20,820	0.8411	0.85		0.10	
Building	4,280	0.0053	0.69			
Landscaping	15,198	0.3458	0.19			
Total Weighted	40,310	0.9943	0.69			



- DRAINAGE NOTES**
1. DETENTION POND CAPACITY REQUIREMENT - 1,995 CF.
 2. EXISTING DETENTION POND CAPACITY - APPROX. 2,277 CF.
 3. ORIFACE IS CALCULATED TO BE 1" DIAMETER, TO BE INSTALLED IN EXISTING STORM DRAIN CONTROL STRUCTURE.

NOTE: ALL CONSTRUCTION TO CONFORM TO EDEN CITY STANDARDS AND SPECIFICATIONS.

NOTICE:
 EXISTING UTILITIES ARE SHOWN ON PLANS FOR THE CONVENIENCE OF THE CONTRACTOR ONLY. THE CONTRACTOR IS RESPONSIBLE FOR THE PROTECTION OF ALL UTILITIES. THE ENGINEER BEARS NO RESPONSIBILITY FOR THE UTILITIES NOT SHOWN OR SHOWN INCORRECTLY.

Call BLUE STAKES BEFORE YOU Dig
 1-800-662-4111
 (see back cover for details)

DEVELOPER
 PAT BRENNAN
 EDEN, UTAH

Gardner Engineering

PLANNING
 CIVIL ENGINEERING
 ELECTRICAL ENGINEERING
 ALTERNATIVE ENERGY

8675 South Adams Ave. Parkway, Suite 200 • Ogden, UT 84405
 Phone (801) 476-0202 • Fax (801) 476-0066

1
 1

R:0268 - Brennan Pat\101 - Eden Professional Center\DESIGN\PRODUCTION\DWG\EPC_SitePlan.dwg, SITE PLAN, 2/16/2012 10:58:26 AM, schristensen, 1:1