



VERIZON WIRELESS
9656 SOUTH PROSPERITY ROAD
WEST JORDAN, UTAH 84088

TAEC

Technology Associates Engineering Corporation
TECHNOLOGY ASSOCIATES

UTAH MARKET OFFICE
9847 SOUTH 500 WEST
SANDY, UTAH 84070

CORPORATE OFFICE
5930 PRIESTLY DRIVE
CARLSBAD, CALIFORNIA 92008

DRAWN BY: JAY C
CHECKED BY: DOUG K

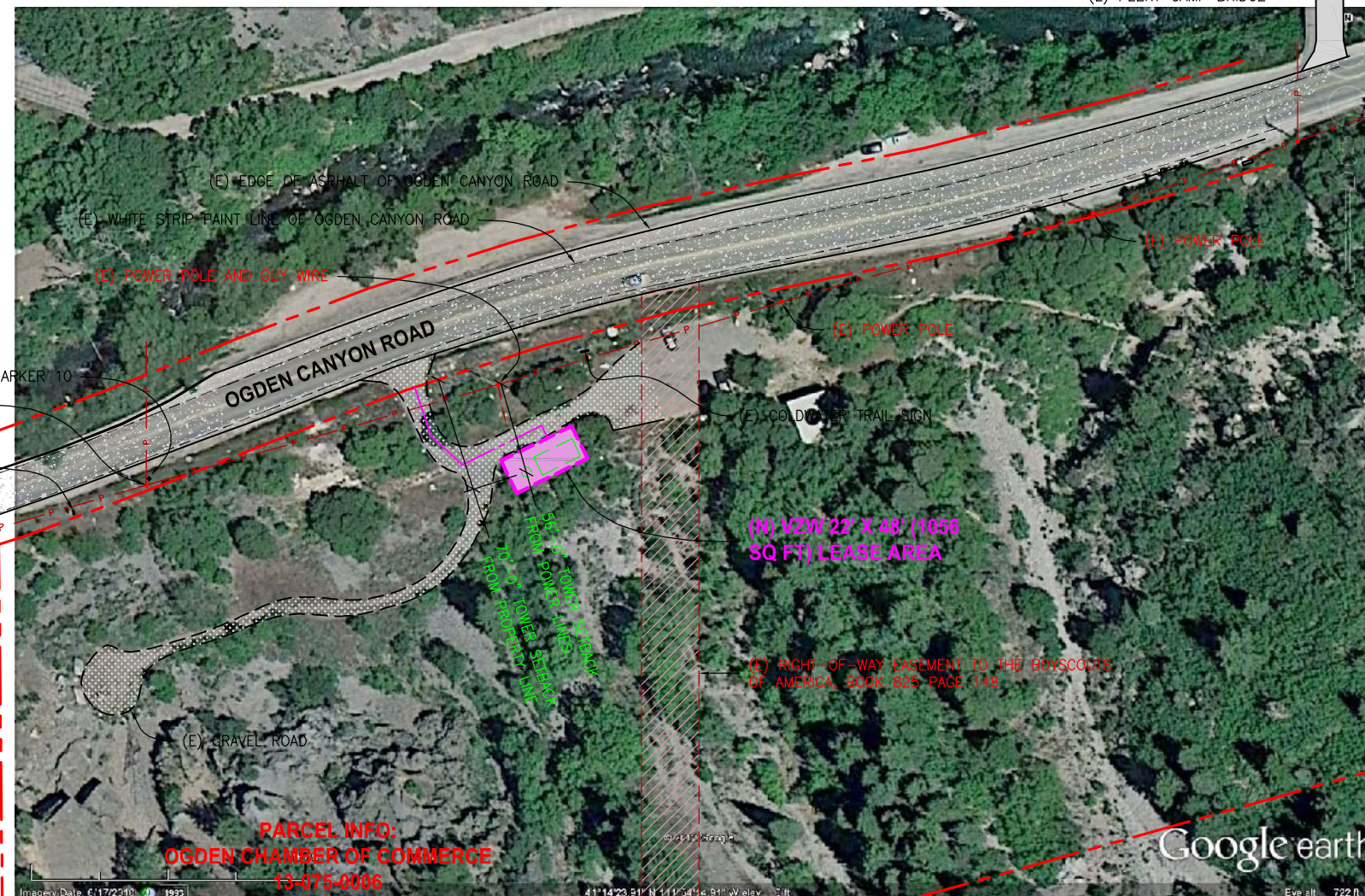
REV	DATE	DESCRIPTION
6	07.12.2012	MOVED LEASE AREA
5	01.18.2012	REVISIONS PER CITY
4	01.11.2012	REVISIONS PER CITY
3	12.09.2011	REVISIONS PER CITY
2	10.25.2011	FAA UPDATE
1	09.15.2011	MOVED LEASE AREA
0	08.24.2011	ZONING DRAWINGS

SAL - PEERY CAMP
SW SEC 24, T6N, R1W
OGDEN CANYON HWY
OGDEN, UTAH 84401
-- RAWLAND SITE --

SHEET TITLE
OVERALL SITE PLAN

SHEET NUMBER
C100

(E) PEERY CAMP BRIDGE



(E) EDGE OF ASPHALT OF OGDEN CANYON ROAD
(E) WHITE STRIP PAINT LINE OF OGDEN CANYON ROAD

(E) POWER POLE AND GUY WIRE

(E) POWER POLE

(E) POWER POLE

(E) CO. DIV. TRAIL SIGN

(E) MILE MARKER 10

(E) POWER POLE

(E) INDIAN TRAIL SIGN

(E) CONCRETE BARRIER WALL

(N) VZW 22' X 48' (1056 SQ FT) LEASE AREA

(E) RIGHT-OF-WAY EASEMENT TO THE BOY SCOUTS OF AMERICA, BOOK 825 PAGE 144

(E) GRAVEL ROAD

PARCEL INFO:
OGDEN CHAMBER OF COMMERCE
13-075-0008

PARCEL INFO:
TBL DEVELOPMENT LLC
13-075-0008

PARCEL INFO:
BOY SCOUTS OF AMERICA
13-075-0007

