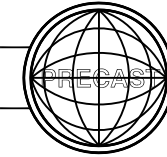


SEE CHART FOR
REINFORCEMENT
SCHEDULE

Ø VARIES



Robertson Mfg.
INCORPORATED

SPECIFICATIONS

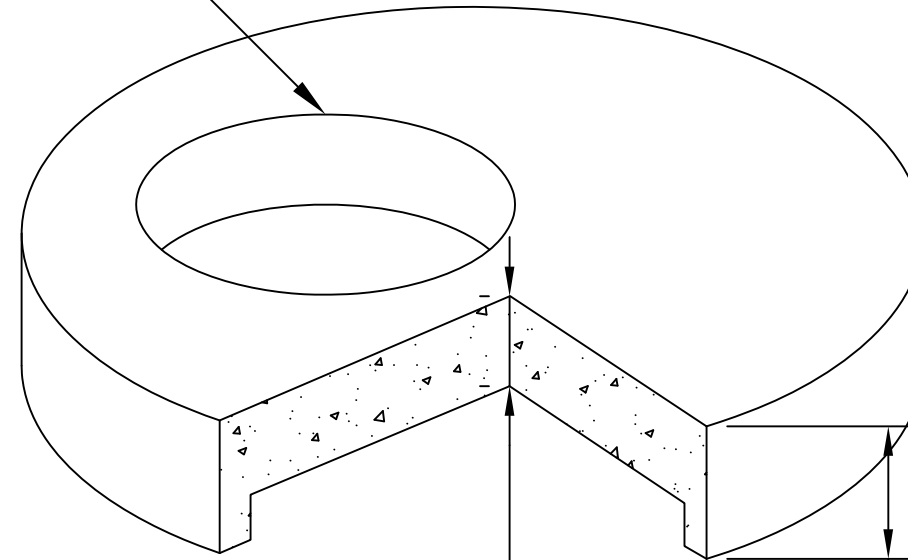
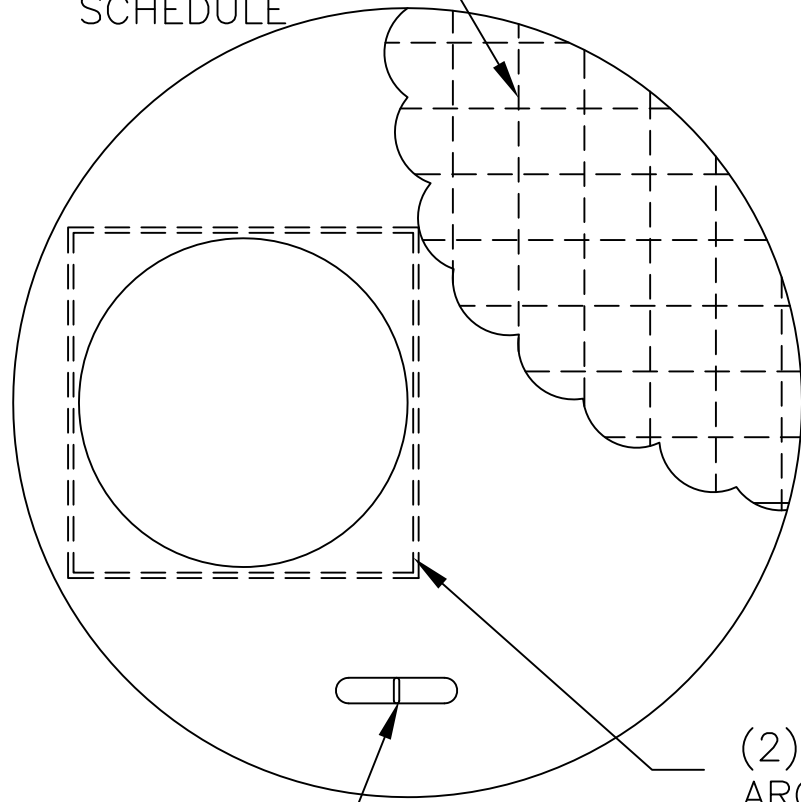
Concrete: Class A 4,000 psi minimum
(28 day)—vibrated or well—rodged

Reinforcing: All reinforcing steel shall be
of new stock deformed bars, 60ksi.

Load Rating: HS20

Materials Specifications:

Cement shall meet ASTM C150
Mixture shall meet ASTM C260 and C494
Flyash shall meet ASTM C618
Box shall be tested per ASTM C39
Concrete mix design per ACI standards



(2) EXTRA BARS
AROUND OPENINGS

LIFTING ANCHORS
AS NEEDED

LID SIZE*	SLAB THICKNESS	OVERALL HEIGHT	REINFORCEMENT	WEIGHT
48"	6,8"	13" 11"	8"- #5 BAR @8" C.C. 6"- #5 BAR @6" C.C.	~1,400 LBS
60"	6,7,8"	14" 13" 12"	8"- #5 BAR @8" C.C. 7"- #5 BAR @6" C.C. 6"- #5 BAR @4" C.C.	~2,400 LBS
72"	6,8"	14" 12"	8"- #5 BAR @6" C.C. 6"- #5 BAR @4" C.C.	~3,500 LBS
96"	8,10"	14" 16"	8"- #5 BAR @6" C.C. 10"- #5 BAR @10" C.C.	~8,200 LBS

Manufactured by:
Robertson Manufacturing
207 W Hyde Park Lane
Hyde Park, Utah 84318

General Notes:

- *Lid size refers as the "Nominal" lid size*
- All rebar to have 1.5" of cover from bottom mat
- Each bar to have ≥ 24" of lap

MANHOLE LIDS

08-2012
Drawn By: Cody Garner
Scale: N.T.S.