

Structure ID: **SDMH STA 3+63 (WONT WORK)**

Spec: All
Type: MHs with Flat Lids
Size: 60"

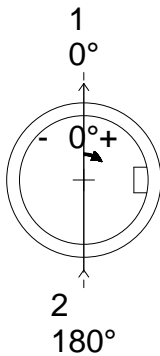
Rim: 36.5'
Invert: 31.1'
Catch: 0'

Rim to Invert: 5.4'
Overall Height: 6.17'
Slack: 0.23'

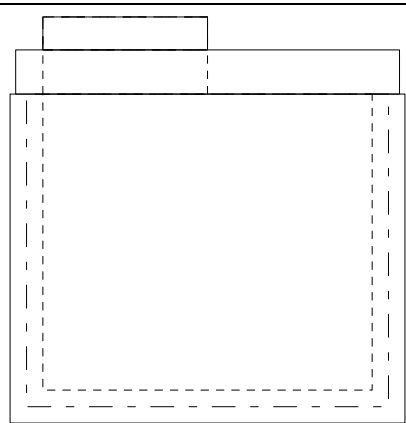
1) 30" - R&C (Storm) - A-1180	331lb
1) 60" - Flat Lid Ecc 8" Thick Total - 8"	1600lb
1) 60" - Flat Base - 5'	7300lb
1) 60" - Mastic - 1.5 Rolls	1lb
1) 42" - Hole - Ruff	1lb
1) 24" - Hole - Ruff	1lb
5) STEPS - 12"	0lb

Structure Total:	9234lb

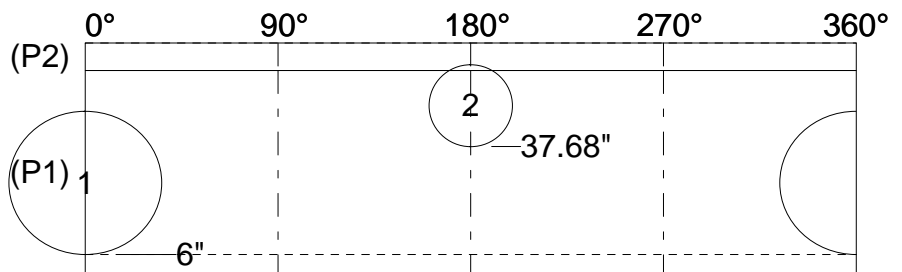
Structure Notes: *** This manhole is too shallow from Rim to existing so the inlet hole would be in the flat lid.



Position	Elev	Angle	Hole	Pipe
Rim	36.5'			
Reducer				
Invert 1	31.1'	0°	42"	30" RCP Class III
Invert 2	33.49'	180°	24"	18" Corrugated Metal
Invert 3				
Invert 4				
Invert 5				
Invert 6				
Invert 7				
Invert 8				



OUTSIDE WALL DIMENSIONS



(P2) - 60" - Flat Lid Ecc 8" Thick Total - 8"
(P1) - 60" - Flat Base - 5'

Structure ID: **SDMH STA 3+63 Solution 1**

Spec: All
 Type: MHs with Flat Lids
 Size: 60"

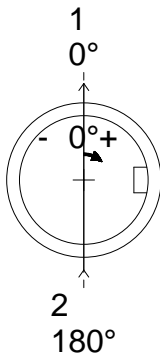
Rim: 36.7'
 Invert: 31.5'
 Catch: 0'

Rim to Invert: 5.2'
 Overall Height: 6.17'
 Slack: 0.03'

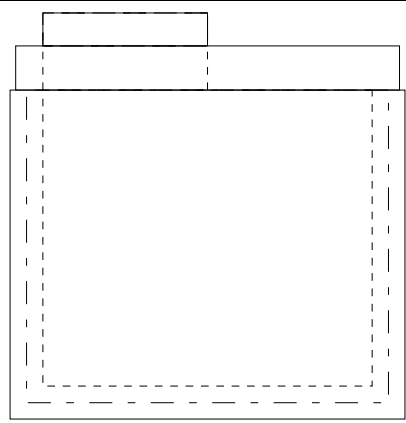
1) 30" - R&C (Storm) - A-1180	331lb
1) 60" - Flat Lid Ecc 8" Thick Total - 8"	1600lb
1) 60" - Flat Base - 5'	7300lb
1) 60" - Mastic - 1.5 Rolls	1lb
1) 42" - Hole - Ruff	1lb
1) 24" - Hole - Ruff	1lb
5) STEPS - 12"	0lb

Structure Total:	9234lb

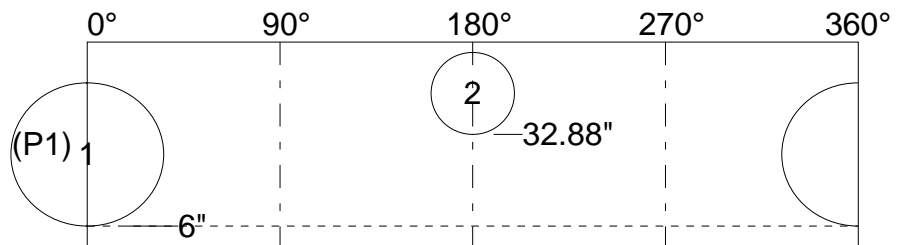
Structure Notes: *** RIM TO BE RAISED .2'. 30" OUTLET TO BE RAISED .4' AND 8" TRAFFIC FLAT LID TO HAVE NO JOINTS



Position	Elev	Angle	Hole	Pipe
Rim	36.7'			
Reducer				
Invert 1	31.5'	0°	42"	30" RCP Class III
Invert 2	33.49'	180°	24"	18" Corrugated Metal
Invert 3				
Invert 4				
Invert 5				
Invert 6				
Invert 7				
Invert 8				



OUTSIDE WALL DIMENSIONS



(P1) - 60" - Flat Base - 5'

Structure ID: **SDMH STA 3+63 Solution 2**

Spec: All
 Type: MHs with Flat Lids
 Size: 60"

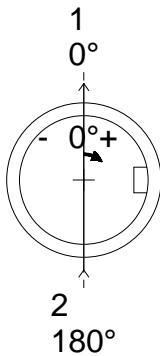
Rim: 36.5'
 Invert: 31.4'
 Catch: 0'

Rim to Invert: 5.1'
 Overall Height: 6.083'
 Slack: 0.017'

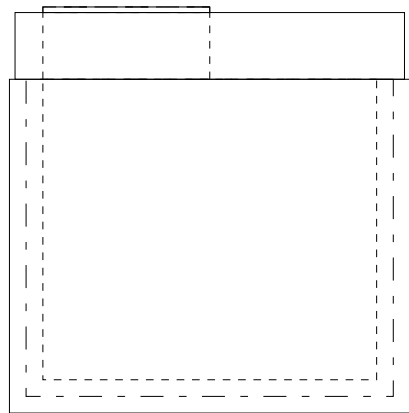
1) 30" - Low Pro Ring & Cvr 1" - B-5343	331lb
1) 60" - Flat Lid Ecc (6" Thick) - 12"	1600lb
1) 60" - Flat Base - 5'	7300lb
1) 60" - Mastic - 1.5 Rolls	1lb
1) 42" - Hole - Ruff	1lb
1) 24" - Hole - Ruff	1lb
5) STEPS - 12"	0lb

Structure Total:	9234lb

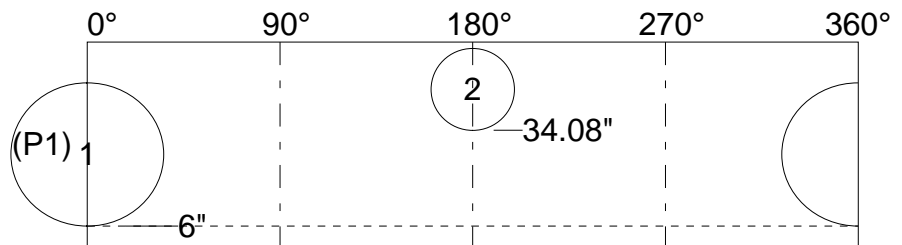
Structure Notes: *** 30" OUTLET TO BE RAISED .3' AND LOW PROFILE RING AND COVER NEEDED ON FLAT LID WITH JOINT.



Position	Elev	Angle	Hole	Pipe
Rim	36.5'			
Reducer				
Invert 1	31.4'	0°	42"	30" RCP Class III
Invert 2	33.49'	180°	24"	18" Corrugated Metal
Invert 3				
Invert 4				
Invert 5				
Invert 6				
Invert 7				
Invert 8				



OUTSIDE WALL DIMENSIONS



(P1) - 60" - Flat Base - 5'

Structure ID: **SDMH STA 3+49**

Spec: All
Type: MHs with Flat Lids
Size: 60"

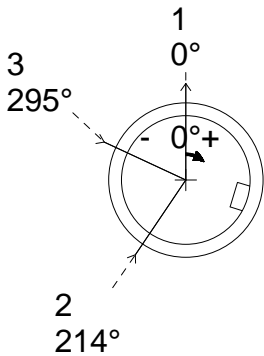
Rim: 29.4'
Invert: 25.15'
Catch: 0'

Rim to Invert: 4.25'
Overall Height: 6'
Slack: 0'

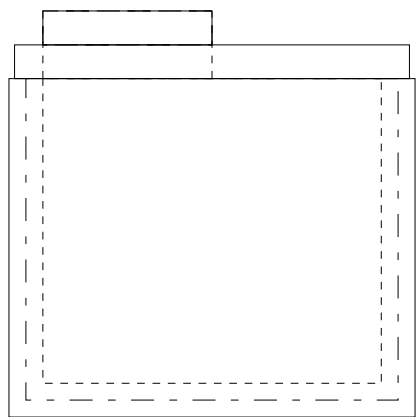
1) 30" - R&C (Storm) - A-1180	331lb
1) 60" - Flat Lid Ecc 6" Thick Total - 6"	1600lb
1) 60" - Flat Base - 5'	7300lb
1) 60" - Mastic - 1.5 Rolls	1lb
2) 42" - Hole - Ruff	2lb
1) 24" - Hole - Ruff	1lb
4) STEPS - 12"	0lb

Structure Total:	9235lb

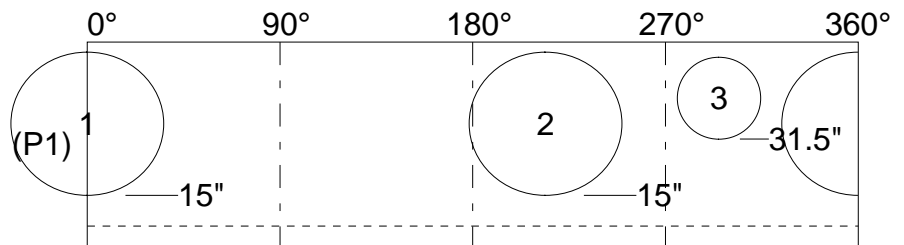
Structure Notes: *** NEEDS 6" FLAT LID WITHOUT JOINT.



Position	Elev	Angle	Hole	Pipe
Rim	29.4'			
Reducer				
Invert 1	25.15'	0°	42"	30" RCP Class III
Invert 2	25.15'	214°	42"	30" RCP Class III
Invert 3	26.4'	295°	24"	15" RCP Class III
Invert 4				
Invert 5				
Invert 6				
Invert 7				
Invert 8				



OUTSIDE WALL DIMENSIONS



(P1) - 60" - Flat Base - 5'

Structure ID: **SDMH STA 3+00, 48"**

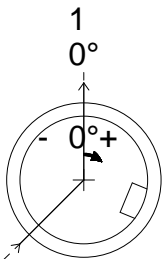
Spec: All
Type: Manholes
Size: 48"

Rim: 40.91'
Invert: 31.46'
Catch: 0'

Rim to Invert: 9.45'
Overall Height: 10.25'
Slack: 0.075'

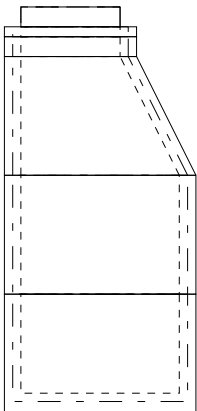
1) 30" - R&C (Storm) - A-1180	331lb
1) 30" - Grade Rings 30" - 3"	139lb
1) 30" - Grade Rings 30" - 6"	278lb
1) 48" - Cone Eccentric - 3'	2670lb
1) 48" - Riser - 3'	2592lb
1) 48" - Flat Base - 3'	3830lb
2) 48" - Mastic - 1 Roll	2lb
2) 24" - Hole - Ruff	2lb
8) STEPS - 12"	0lb

Structure Total:	9844lb

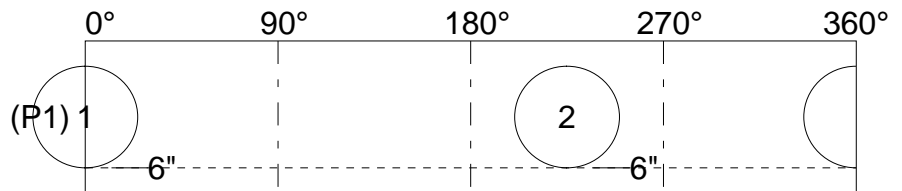


2
225°

Position	Elev	Angle	Hole	Pipe
Rim	40.91'			
Reducer				
Invert 1	31.46'	0°	24"	15" RCP Class III
Invert 2	31.46'	225°	24"	15" RCP Class III
Invert 3				
Invert 4				
Invert 5				
Invert 6				
Invert 7				
Invert 8				



OUTSIDE WALL DIMENSIONS



(P1) - 48" - Flat Base - 3'

Structure ID: **SDMH STA 0+07**

Spec: All
 Type: MHs with Flat Lids
 Size: 60"

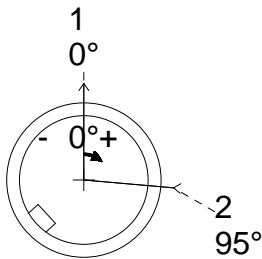
Rim: 42.39'
 Invert: 39.31'
 Catch: 0'

Rim to Invert: 3.08'
 Overall Height: 4.17'
 Slack: 0'

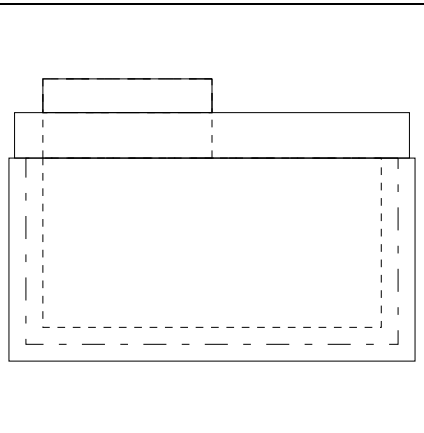
1) 30" - R&C (Storm) - A-1180	331lb
1) 60" - Flat Lid Ecc 8" Thick Total - 8"	1600lb
1) 60" - Flat Base - 3'	5000lb
1) 60" - Mastic - 1.5 Rolls	1lb
1) 24" - Hole - Ruff	1lb
1) 20" - Hole - Ruff	1lb
3) STEPS - 12"	0lb

Structure Total:	6934lb

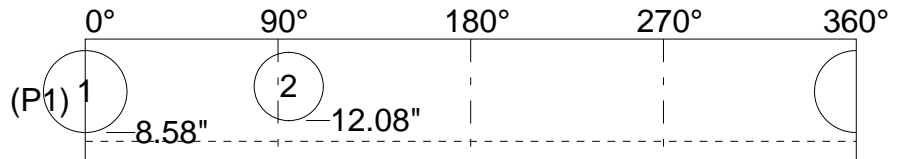
Structure Notes: *** NEEDS 8" FLAT LID WITHOUT JOINT.



Position	Elev	Angle	Hole	Pipe
Rim	42.39'			
Reducer				
Invert 1	39.31'	0°	24"	15" RCP Class III
Invert 2	39.56'	95°	20"	12" RCP Class III
Invert 3				
Invert 4				
Invert 5				
Invert 6				
Invert 7				
Invert 8				



OUTSIDE WALL DIMENSIONS



(P1) - 60" - Flat Base - 3'