



Robertson Mfg.  
INCORPORATED

**SPECIFICATIONS**

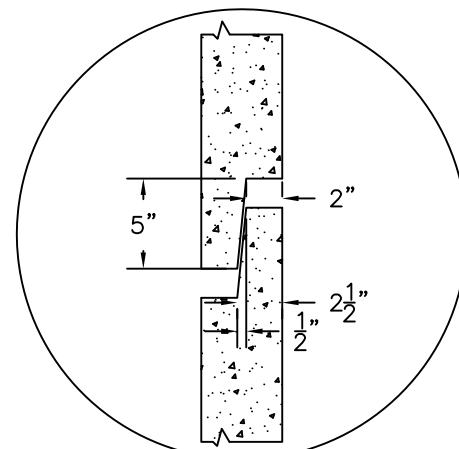
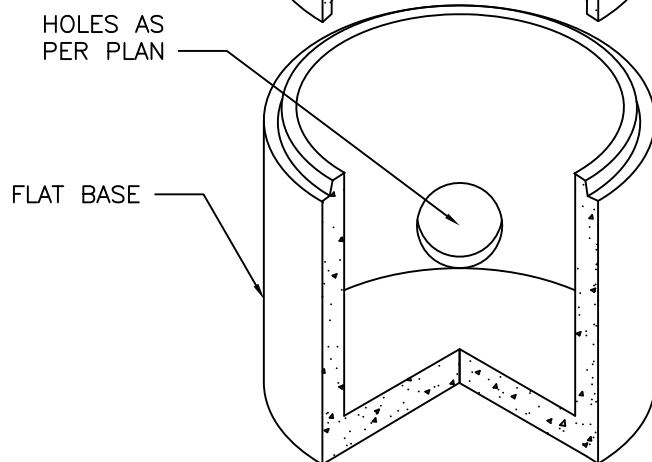
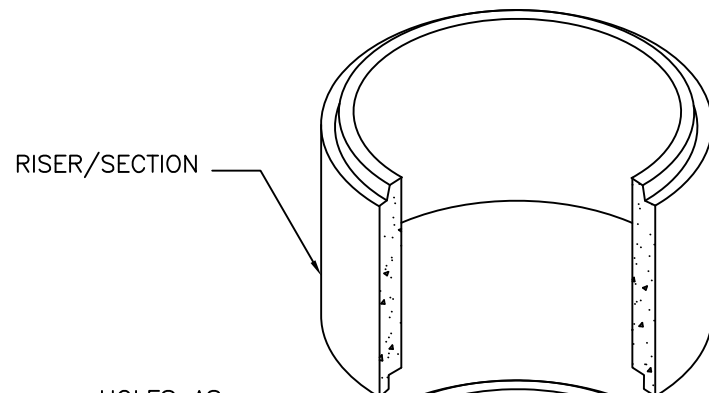
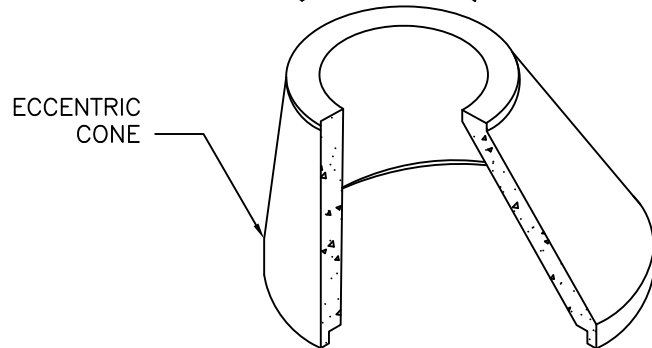
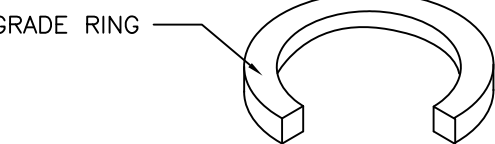
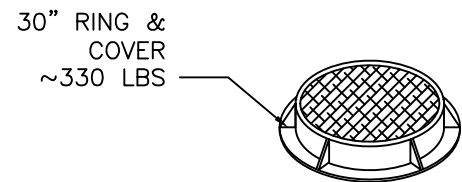
**Concrete:** Class A 4,000 psi minimum  
(28 day)—vibrated or well-rodged

**Reinforcing:** AREA: .12

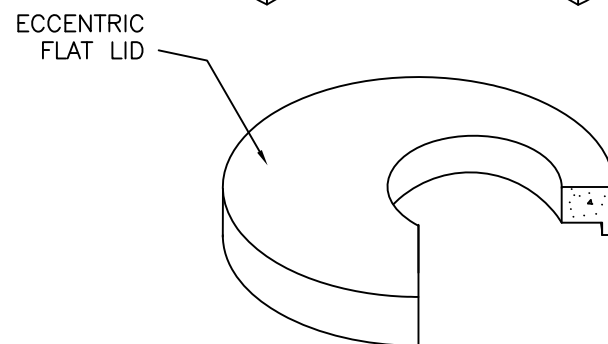
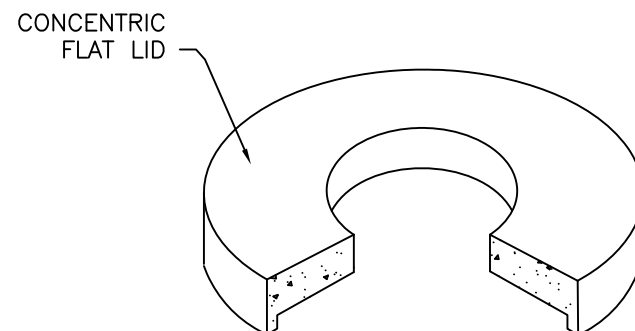
**Load Rating:** HS20

**Materials Specifications:**

Cement shall meet ASTM C150  
Mixture shall meet ASTM C260 and C494  
Flyash shall meet ASTM C618  
Box shall be tested per ASTM C39  
Concrete mix design per ACI standards



JOINT DETAIL



FLAT LID HEIGHT	WEIGHT
8"	2,000 LBS

CONE HEIGHTS	WEIGHT
2'	1,750 LBS
3'	2,700 LBS

RISER HEIGHTS	WEIGHT
1'	875 LBS
2'	1,730 LBS
3'	2,625 LBS
4'	3,500 LBS

BASE HEIGHTS	WEIGHT
2'	2,830 LBS
3'	3,700 LBS
4'	4,600 LBS

Manufactured by:  
Robertson Manufacturing  
207 W Hyde Park Lane  
Hyde Park, Utah 84318

**General Notes:**

- STEPS TO BE SPACED @ 12" C.C.
- 5" WALL THICKNESS - 6"-8" BASE (TYP)
- PERFORATION AVAILABLE SPACED ~ 12" O.C. BOTH WAY
- TYPICALLY (2) LIFTING ANCHORS ARE PROVIDED FOR EACH SECTION

48" FLAT BASE MANHOLE  
02-2012  
Drawn By: Cody Garner  
Scale: N.T.S.