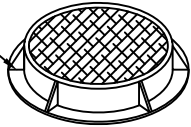
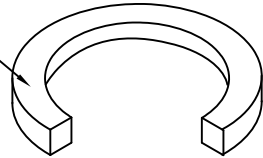


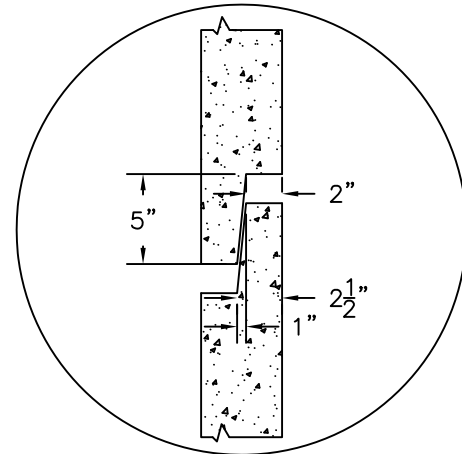
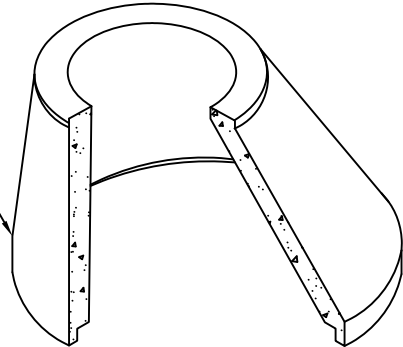
30" RING &
COVER
~330 LBS



GRADE RING

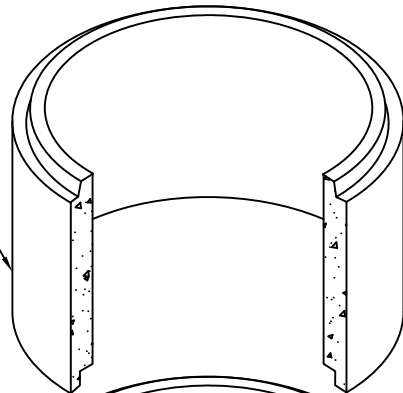


ECCENTRIC
CONE

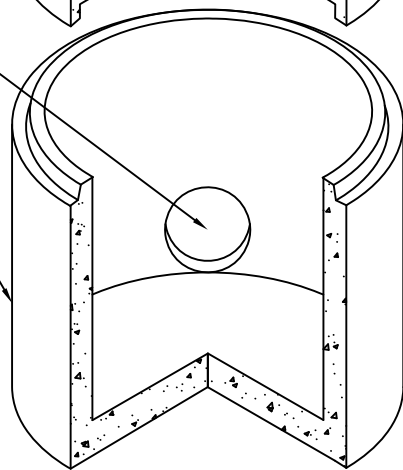


JOINT DETAIL

RISER/SECTION

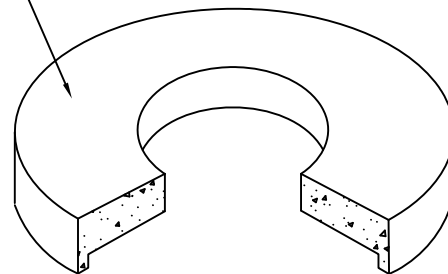


HOLES AS
PER PLAN

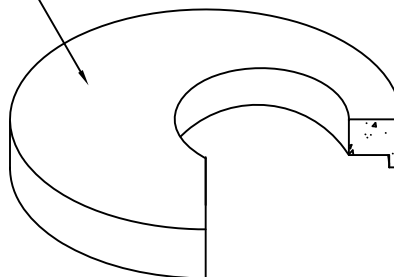


FLAT BASE

CONCENTRIC
FLAT LID



ECCENTRIC
FLAT LID

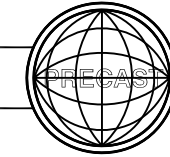


FLAT LID HEIGHT	WEIGHT
10"	3,750 LBS

CONE HEIGHTS	WEIGHT
2'	2,850 LBS
3'	4,000 LBS

RISER HEIGHTS	WEIGHT
1'	1,150 LBS
2'	2,300 LBS
3'	3,450 LBS
4'	4,600 LBS
5'	5,750 LBS

BASE HEIGHTS	WEIGHT
2'	3,930 LBS
3'	5,075 LBS
4'	6,225 LBS
5'	7,375 LBS



Robertson Mfg.
INCORPORATED

SPECIFICATIONS

Concrete: Class A 4,000 psi minimum
(28 day)—vibrated or well-rodged

Reinforcing: AREA: .15

Load Rating: HS20

Materials Specifications:
Cement shall meet ASTM C150
Mixture shall meet ASTM C260 and C494
Flyash shall meet ASTM C618
Box shall be tested per ASTM C39
Concrete mix design per ACI standards

Manufactured by:
Robertson Manufacturing
207 W Hyde Park Lane
Hyde Park, Utah 84318

General Notes:

- STEPS TO BE SPACED @ 12" C.C.
- 6" WALL THICKNESS
- PERFORATION AVAILABLE SPACED ~ 12" O.C. BOTH WAY
- TYPICALLY (2) LIFTING ANCHORS ARE PROVIDED FOR EACH SECTION

60" FLAT BASE MANHOLE
02-2012
Drawn By: Cody Garner
Scale: N.T.S.