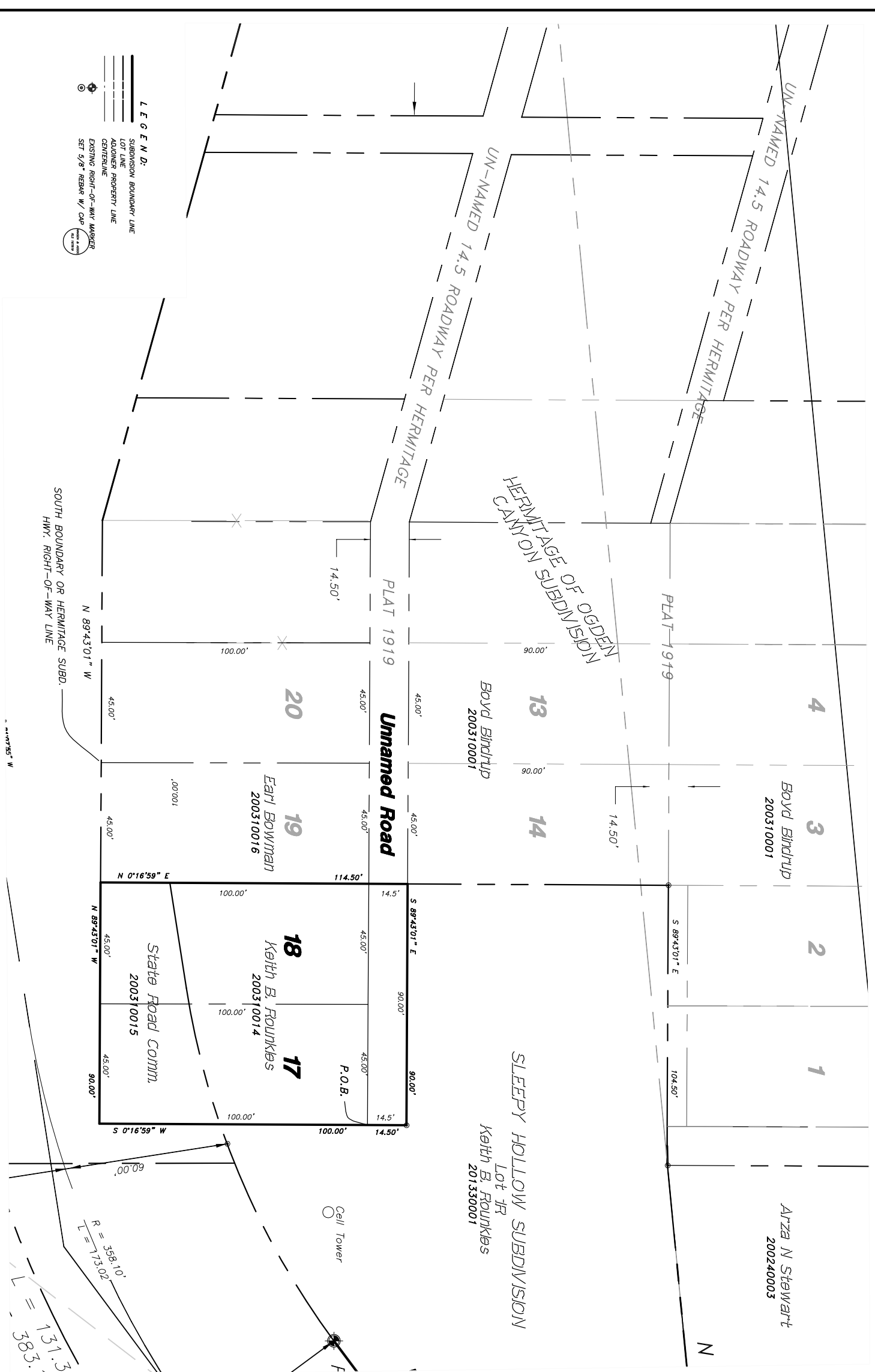


PLAT SHOWING THE PARTIAL VACATION OF HERMITAGE OF OGDEN CANYON SUBDIVISION

WEBER COUNTY, UTAH
A PART OF THE SOUTHEAST QUARTER OF SECTION 18,
TOWNSHIP 6 NORTH, RANGE 1 EAST, S.L.B.&M.
AUGUST, 2011



SURVEY CERTIFICATE

I, K. Greg Hansen, a Licensed Professional Land Surveyor with Certificate No. 167819 as prescribed by the Utah State Board of Professional Engineering and Architecture, do hereby certify that the plat for the partial vacation of the Hermitage of Ogden Canyon Subdivision, Weber County, Utah, meets the requirements of Title 10, Chapter 9A-608 Utah Code, and has been correctly drawn to the designated scale and is a true and correct representation of the following description of lands included in said survey made on the ground.

Signed this _____ day of _____, 2011.



K. Greg Hansen,
R.L.S. No. 167819

BOUNDARY DESCRIPTION OF PERIMETER OF LOTS TO BE VACATED

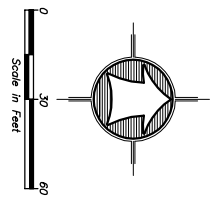
A PART OF THE SOUTHEAST QUARTER OF SECTION 18, TOWNSHIP 6 NORTH, RANGE 1 EAST OF THE SALT LAKE BASE AND MERIDIAN, BEGINNING AT THE NORTHEAST CORNER OF LOT 17, HERMITAGE OF OGDEN CANYON SUBDIVISION, WEBER COUNTY, UTAH SURVEY AND RUNNING THENCE SOUTH 00°16'59" WEST 100.00 FEET TO THE SOUTHWEST CORNER OF SAID LOT 17; THENCE NORTH 89°43'01" WEST 90.00 FEET TO THE SOUTHWEST CORNER OF LOT 18; THENCE SOUTH 89°43'01" WEST 90.00 FEET ALONG SAID NORTH LINE; THENCE SOUTH 00°16'59" WEST 14.50 FEET TO THE POINT OF BEGINNING, CONTAINING 0.24 ACRES.

RECORDED LEGAL DESCRIPTION OF LOTS, PARCELS AND PUBLIC ROADWAYS TO BE VACATED

Lot 17 and Lot 18 and the 14.5 foot wide un-named road on the north side of said lots of the Hermitage of Ogden Canyon Subdivision, Weber County, Utah Survey being situated in the Southeast Quarter of Section 18, Township 6 North, Range 1 East of the Salt Lake Base and Meridian on file in the office of the Weber County Recorder's Office.

NARRATIVE

THE PURPOSE OF THIS SURVEY IS TO VACATE LOTS 17 & 18 AND THE ADJOINING ROAD TO THE NORTH OF THE HERMITAGE OF OGDEN CANYON SUBDIVISION, WEBER COUNTY, UTAH AS SHOWN AND DESCRIBED HEREON. THE HERMITAGE OF OGDEN CANYON SUBDIVISION, WEBER COUNTY, UTAH SURVEY AND DESCRIBED HEREON, BEGINS AT THE NORTHEAST CORNER OF SECTION 18, TOWNSHIP 6 NORTH AND 2100 EAST AND 275 EAST WHICH BEARS N 11°27'06" W PER SAID QUAIL POUNDS SUBDIVISIONS. THE BASIS OF BEARING AS SHOWN ON SAID SUBDIVISIONS IS NOTED AS BEING THE SOUTH LINE OF THE SOUTHWEST QUARTER OF SECTION 33, T7N, R1W, S18E. APPARENTLY NO PHYSICAL TIES WERE MADE WITH SAID SUBDIVISIONS, ONLY PAPER TIES WITH THE STATEMENT EVIDENCE BEING SURVEY MONUMENTS IN THE GREENFIELD SUBDIVISION. THE ONLY CHANGE IN THE SUBDIVISION BOUNDARY AND THE CHANGE IN COMMON AREA DESIGNATION ARE IN THE SAME LOCATION AS ORIGINALLY PLATTED. THE ONLY CHANGES BEING THE EXTENSION OF SAID LOTS TO THE BACK LINE OF THE SUBDIVISION BOUNDARY AND THE CHANGE IN COMMON AREA DESIGNATION AND USES.



WEBER COUNTY SURVEYOR

I hereby certify that the Weber County Surveyor's office has reviewed this plat for mathematical correctness, and that the mathematical calculations and the monuments on record in county offices. The approval of this plat by the Weber County Surveyor does not relieve the Licensed Land Surveyor who executed this plat from the responsibilities and/or liabilities associated therewith.

Signed this _____ day of _____, 2011.

WEBER COUNTY COMMISSION ACCEPTANCE

This is to certify that this plat and the vacation of the Lots and Roadway as shown on this plat were duly approved and accepted by the Commissioners of Weber County this _____ day of _____, 2011.

By: _____
Chairman Weber County Commission
Attest: _____
Secretary

WEBER COUNTY PLANNING COMMISSION APPROVAL

This is to certify that this vacation plat was duly approved by the Weber County Planning Commission on the _____ day of _____, 2011.

By: _____
Chairman, Weber County Planning Commission
Attest: _____

COUNTY RECORDER

ENTRY NO. _____ FEE PAID _____
RECORDED _____ FILED FOR RECORD AND
IN BOOK _____ OF ORIGINAL
RECORDS PAGE _____

BY: _____
COUNTY RECORDER
DEPUTY

HANSEN & ASSOCIATES, INC.
Consulting Engineers and Land Surveyors
536 North Main Street, Brigham, Utah 84302
Visit us at www.hai-us.net
Brigham, Utah 84302
(801) 589-4965 (435) 752-4272