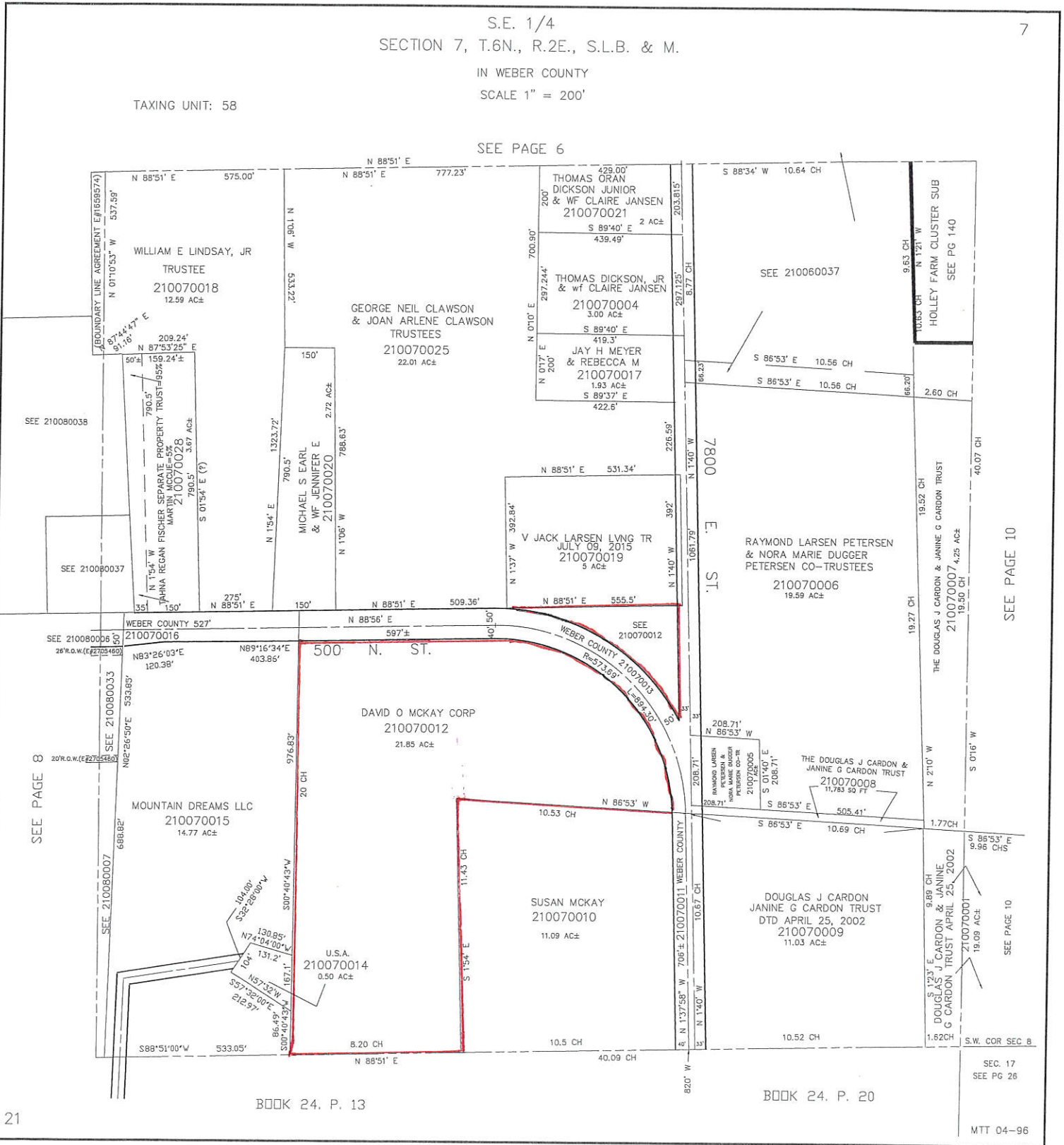


S.E. 1/4
SECTION 7, T.6N., R.2E., S.L.B. & M.

IN WEBER COUNTY
SCALE 1" = 200'

TAXING UNIT: 58

SEE PAGE 6



SEE PAGE 10

SEE PAGE 8

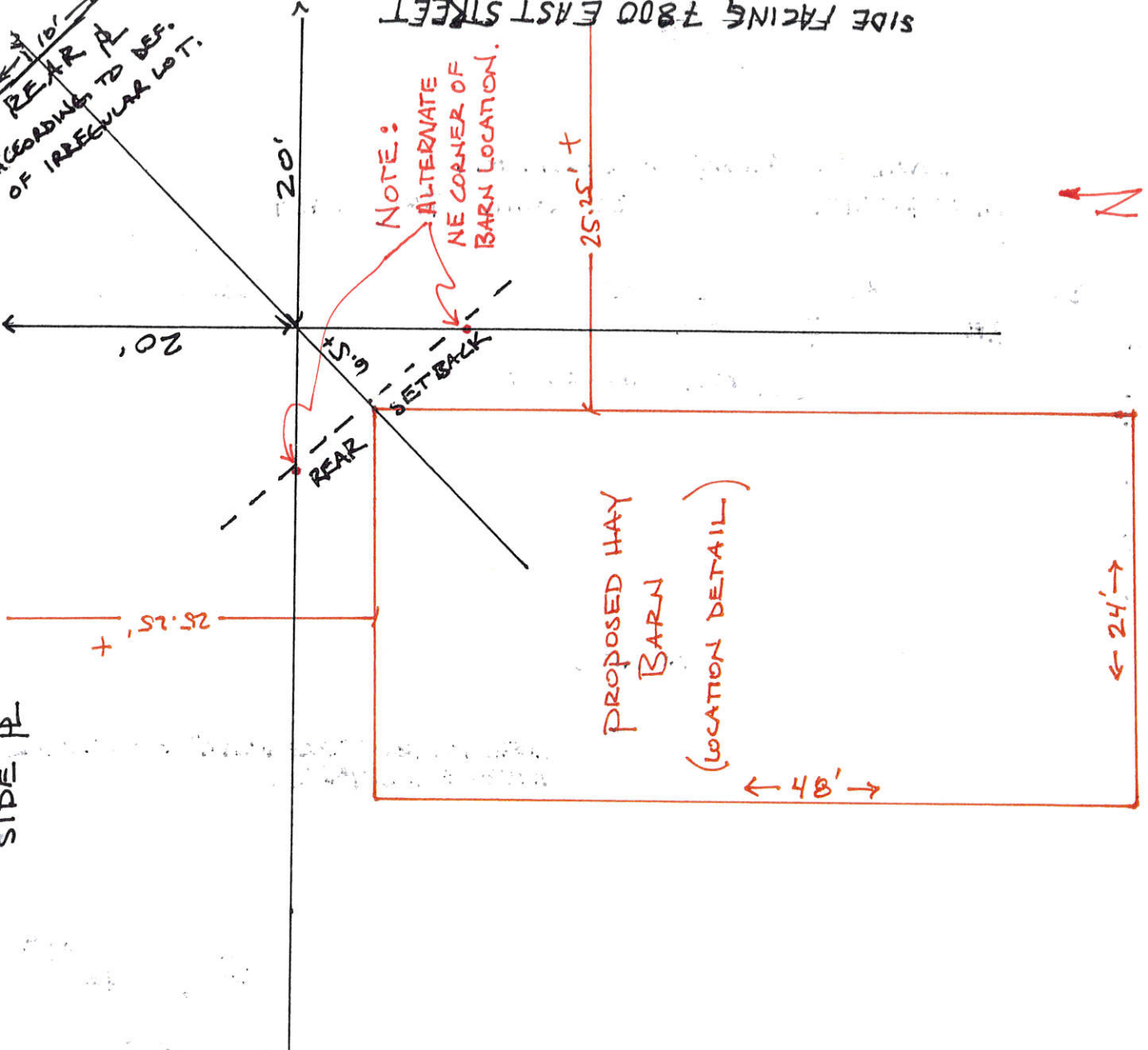
SEE PAGE 10

SEC. 17
SEE PG 26

MTT 04-96

REAR PL
ACCORDING TO DEF.
OF IRREGULAR LOT.

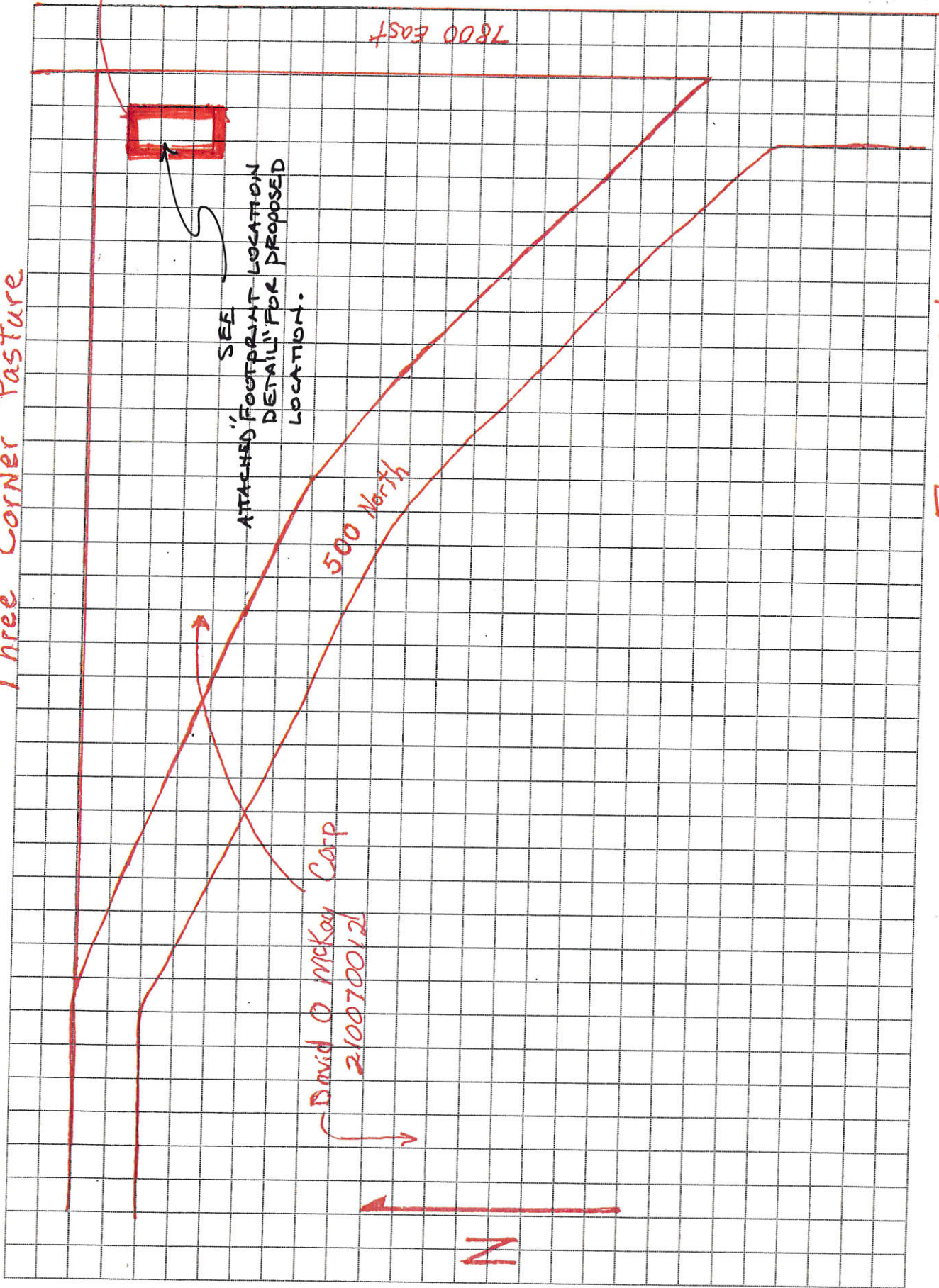
SIDE FACING 7800 EAST STREET



SIDE PL

(FOOTPRINT
LOCATION DETAIL)

Three Corner Pasture



Hay Barn
24' x 48'
18' to rafters
20' set back

SEE
ATTACHED 'FOOTPRINT LOCATION
DETAILS' FOR PROPOSED
LOCATION.

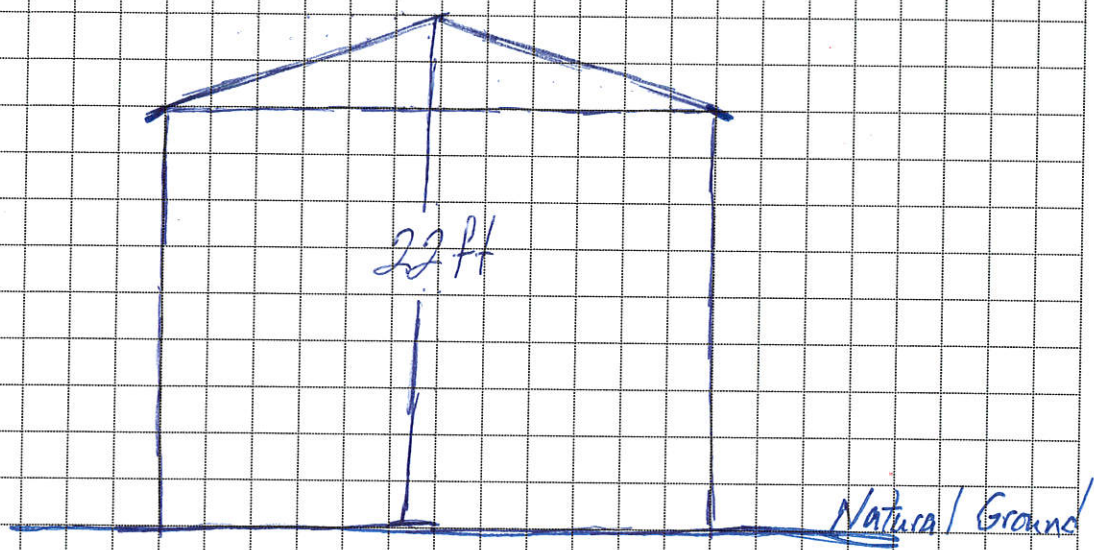
500 North

David O McKay Corp
2100700121

N

7800 East

□ Square = 20'



□ 2 ft