



SITE STATISTICS

TOTAL PARCEL	25,801.28 SF
TOTAL DISTURBED	29,945 SF
BUILDING COVERAGE	14,664 SF
PROPOSED BLDG	7803 SF

WARNING
CALL BLUE STAKES



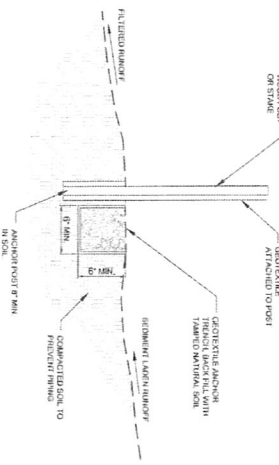
OWNER: JAC ENTERPRISES
 PROJECT: 2014-0001
 PROJECT NO: 140001
 SCALE: 1" = 40'

DESIGNED BY: JAC ENTERPRISES
 DRAWN BY: JAC ENTERPRISES
 CHECKED BY: JAC ENTERPRISES
 DATE: 08/2014

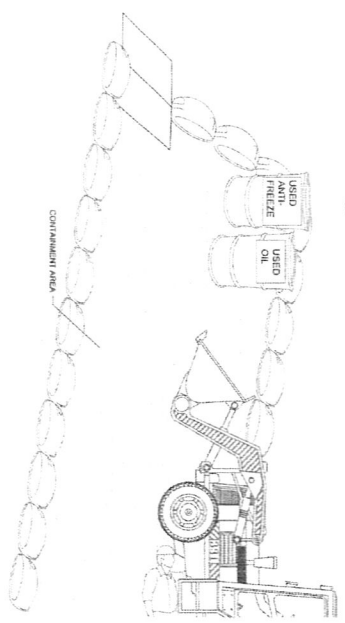
**SWPPP
SITE PLAN**

C.02

- NOTES:**
1. CONTINUOUS SIGN, NOTAL & MOUNTING ENVIRONMENTAL EFFECTS UNTIL PROJECT'S COMPLETION AND VEGETATION HAS BEEN ESTABLISHED.
 2. IF AREA OF DISTURBANCE CHANGES, CONTINUOUS SIGN, NOTAL, NOTARY, NOTIFICATION, AND SIGNAGE MUST BE RE-EVALUATED FOR APPROPRIATE MODIFICATION.
 3. CONTINUOUS SIGN, NOTAL, NOTARY, NOTIFICATION, AND SIGNAGE MUST BE MAINTAINED THROUGHOUT THE LIFE OF THE PROJECT.
 4. ALL SIGNAGE MATERIALS TO BE KEPT WITHIN THE LIMITS OF DISTURBANCE.
 5. CONTINUOUS SIGN, NOTAL, NOTARY, NOTIFICATION, AND SIGNAGE TO REMAIN IN PLACE UNTIL ALL DISTURBED AREAS AND SOILS HAVE BEEN FULLY RESTORED TO ORIGINAL CONDITION.
 6. CONTINUOUS SIGN, NOTAL, NOTARY, NOTIFICATION, AND SIGNAGE TO REMAIN IN PLACE UNTIL ALL DISTURBED AREAS AND SOILS HAVE BEEN FULLY RESTORED TO ORIGINAL CONDITION.
 7. CONTINUOUS SIGN, NOTAL, NOTARY, NOTIFICATION, AND SIGNAGE TO REMAIN IN PLACE UNTIL ALL DISTURBED AREAS AND SOILS HAVE BEEN FULLY RESTORED TO ORIGINAL CONDITION.
 8. ALL SIGN, NOTAL, NOTARY, NOTIFICATION, AND SIGNAGE TO REMAIN IN PLACE UNTIL ALL DISTURBED AREAS AND SOILS HAVE BEEN FULLY RESTORED TO ORIGINAL CONDITION.

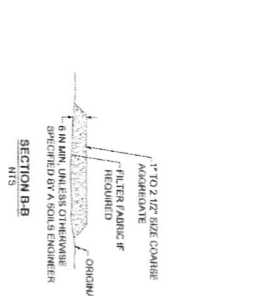


1 SILT FENCE
C.02

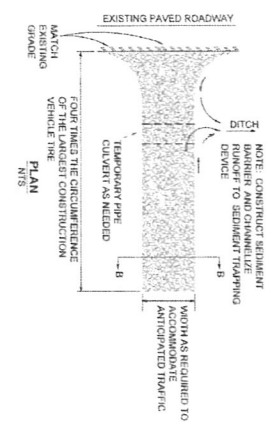


4 EQUIPMENT MAINTENANCE AND REPAIR
C.03

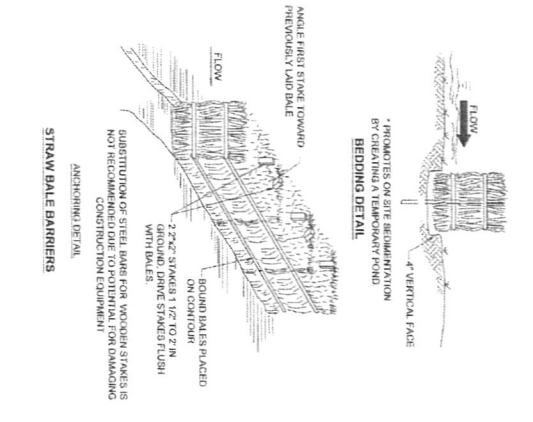
- NOTES:**
1. TRAILING VEHICLES AND EQUIPMENT SHALL NOT BE ALLOWED ON SITE. EQUIPMENT AND VEHICLES SHALL BE INSPECTED FREQUENTLY FOR LEAKS.
 2. VEHICLES AND EQUIPMENT SHALL BE MAINTAINED AND REPAIRED IN A DESIGNATED AREA. PREVENT FUEL AND OIL FROM LEAKING FROM EQUIPMENT AREAS.
 3. EQUIPMENT AND VEHICLES SHALL BE PROTECTED AND AREAS SHALL BE COVERED BY NETS.
 4. EQUIPMENT AND VEHICLES SHALL BE MAINTAINED AWAY FROM SENSITIVE AREAS AND WATERWAYS.
 5. FUELS, OILS, AND FLUIDS SHALL BE STORED IN APPROVED CONTAINERS AND SHALL BE KEPT AWAY FROM SENSITIVE AREAS AND WATERWAYS.
 6. FUELS, OILS, AND FLUIDS SHALL BE STORED IN APPROVED CONTAINERS AND SHALL BE KEPT AWAY FROM SENSITIVE AREAS AND WATERWAYS.
 7. FUELS, OILS, AND FLUIDS SHALL BE STORED IN APPROVED CONTAINERS AND SHALL BE KEPT AWAY FROM SENSITIVE AREAS AND WATERWAYS.



2 CONSTRUCTION C/2Z ENTRANCE
C.02



3 STRAW BALES
C.02



WARNING
CALL BLUE STAKES

epic
ENGINEERING

PROJECT NO: 12345678
DATE: 11/20/2024
SCALE: NTS

PROJECT NAME:
ADVANCED FLUID CONTAINMENT LLC
SHEET NO: 17/21
DRAWN BY: J. SMITH

SWPPP DETAILS
C.03