



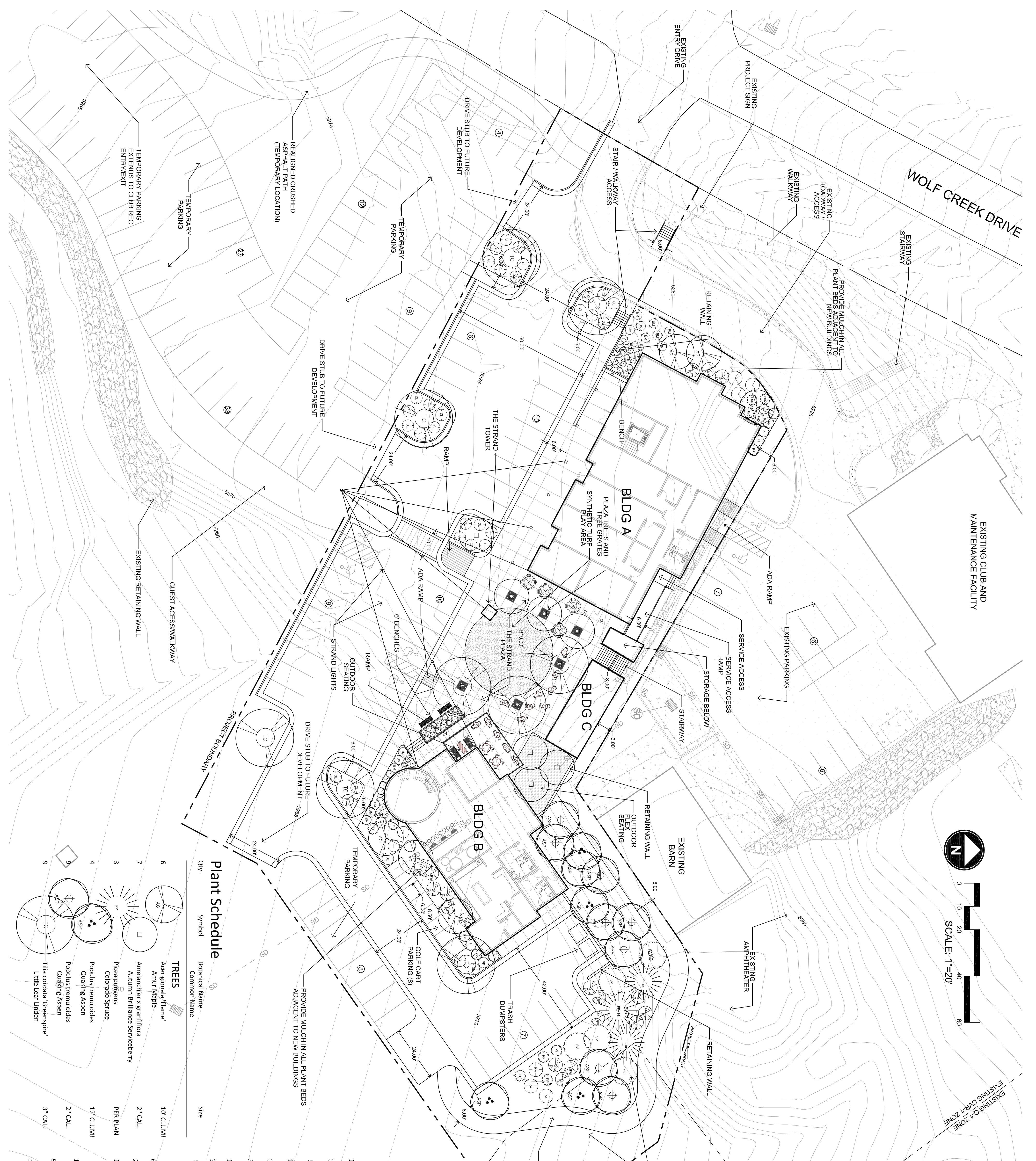
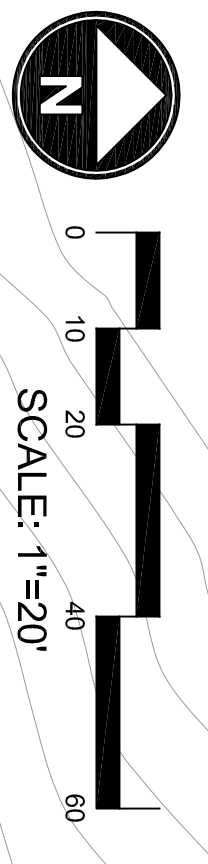
WOLF CREEK RESORT

THE STRAND - PHASE 1

WEBER COUNTY, UTAH

DEVELOPMENT DATA

PARCEL AREA	61,990 SF (1.42 AC)
EXISTING ZONING	CVR-1
REQUIRED PARKING:	
EXISTING FITNESS CENTER (3,300 SF)	30 STALLS
EXISTING FITNESS CENTER (3,385 SF)	17 STALLS
BUILDING A RETAIL (5,915 SF)	30 STALLS
BUILDING A RESTAURANT (3,345 SF)	30 STALLS
BUILDING B RESTAURANT (44 TABLES)	44 STALLS
BUILDING C RETAIL (600 SF)	3 STALLS
TOTAL REQUIRED	154 STALLS
PARKING PROVIDED:	
EXISTING PARKING	19 STALLS
NEW PERMANENT PARKING	42 STALLS
TEMPORARY PARKING	93 STALLS
TOTAL PROPOSED PARKING	154 STALLS



Plant Schedule

Symbol	Botanical Name	Common Name	Qty	Size
TREES				
AS	<i>Acer ginnala</i> 'Frane'	American Frane	6	10' CLUMP
AM	<i>Amur Maple</i>	Amur Maple	6	10' CLUMP
AG	<i>Amenanchier x graniflora</i>	Amenanchier x graniflora	24	2" CAL
AB	<i>Autumn Brilliance Serviceberry</i>	Autumn Brilliance Serviceberry	24	2" CAL
PC	<i>Picea pungens</i>	Colorado Spruce	14	PER PLAN
PT	<i>Populus tremuloides</i>	Populus tremuloides	14	12' CLUMP
QA	<i>Quaking Aspen</i>	Quaking Aspen	14	2" CAL
TA	<i>Tilia cordata</i> 'Greenspire'	Tilia cordata 'Greenspire'	36	3" CAL
TL	<i>Little Leaf Linden</i>	Little Leaf Linden	36	3" CAL
SHRUBS				
CK	<i>Caryopteris x clandonensis</i> 'Dark Knight'	Caryopteris x clandonensis 'Dark Knight'	14	5 Gal.
DK	<i>Dark Knight Blue Misp Spirea</i>	Dark Knight Blue Misp Spirea	3	5 Gal.
CS	<i>Cornus sericea</i> 'Alleman's Compact'	Alleman's Compact	3	5 Gal.
AL	<i>Alleman's Red Osier Dogwood</i>	Alleman's Red Osier Dogwood	5	5 Gal.
PM	<i>Pinus mugo</i> 'mugus Dwarf'	Dwarf Mugo Pine	17	5 Gal.
PF	<i>Potentilla fruticosa</i> 'Jackmannii'	Jackmann Potentilla	32	5 Gal.
RS	<i>Rhus strombolica</i> 'Grow Low'	Grow Low Sumac	3	5 Gal.
RI	<i>Ribes alpinum</i>	Alpine Currant	18	5 Gal.
SA	<i>Silix purpurea</i> nana	Blue Arctic Willow	3	5 Gal.
SY	<i>Syringa patula</i> 'Miss Kim'	Miss Kim Lilac	3	5 Gal.
MI	<i>Miss Kim Lilac</i>	Miss Kim Lilac	3	5 Gal.
SV	<i>Syringa vulgaris</i>	Common Purple Lilac	5	5 Gal.
GRASSES/PERENNIALS				
PA	<i>Panicum virgatum</i> 'Sheenadoh'	Sheenadoh	1	1 Gal.
SH	<i>Stenandrium Swartzii</i> Grass	Stenandrium Swartzii Grass	1	1 Gal.
PE	<i>Peristichum alpestrale</i> Grass	Peristichum alpestrale Grass	1	1 Gal.
FR	<i>Framen Fountain Grass</i>	Framen Fountain Grass	1	1 Gal.
AD	<i>Adiantum x Moorsstine</i>	Moorsstine Yarrow	1	1 Gal.
TURF/MULCH MATERIALS				
NS	Native Seed Mix	Native Seed Mix		Hydroseeded
DN	Decomposed Granite/Crusher Fines	Decomposed Granite/Crusher Fines		3" Depth
WA	Washed #1an 1/4" or As approved	Washed #1an 1/4" or As approved		3" Depth
SM	Soil Prep/Sheilded Bark Mulch	Soil Prep/Sheilded Bark Mulch		3" Depth

DATE:	MARCH 2017
PROJECT:	000,000,000
DRAWN BY:	EL
REVIEW BY:	EL
VERSION:	CONDITIONAL USE
REVISIONS:	
SHEET NUMBER:	L11
SHEET TITLE:	SITE PLAN