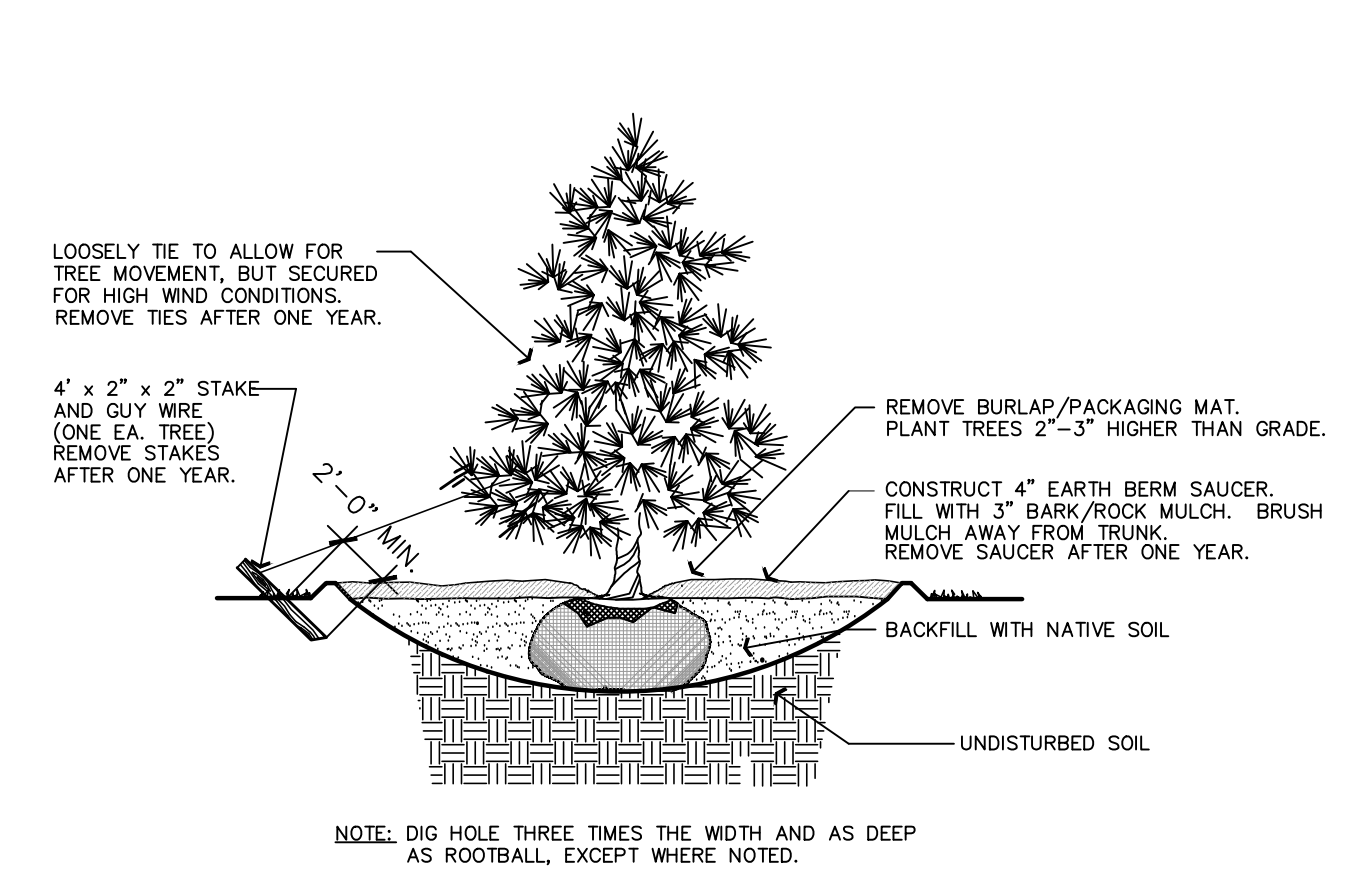


Plant Table

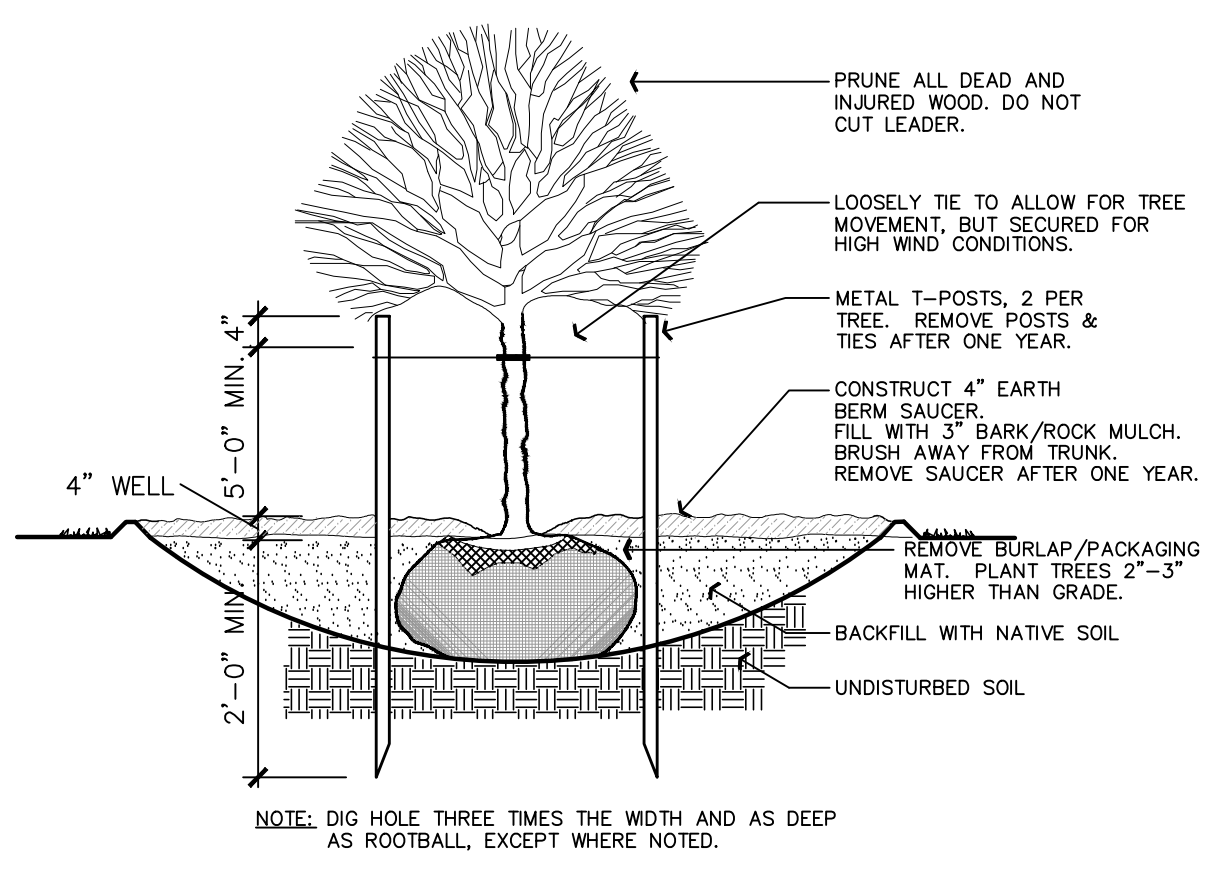
| TREES | | | | |
|----------|--------|--------------------------------------|-------------------|---------------|
| Quantity | Symbol | Scientific Name | Common Name | Planting Size |
| 11 | (+) | <i>Carpinus betulus 'Fastigiata'</i> | Columnar Hornbeam | 2" cal. |
| 12 | (*) | <i>Picea pungens 'Fastigiata'</i> | Totem Spruce | 5'-8' B&B |

| SHRUBS | | | | |
|----------|--------|---------------------------------|---------------|---------------|
| Quantity | Symbol | Scientific Name | Common Name | Planting Size |
| 47 | (*) | <i>Rhus aromatica 'Gro-Low'</i> | Gro-Low Sumac | 5 gal. |

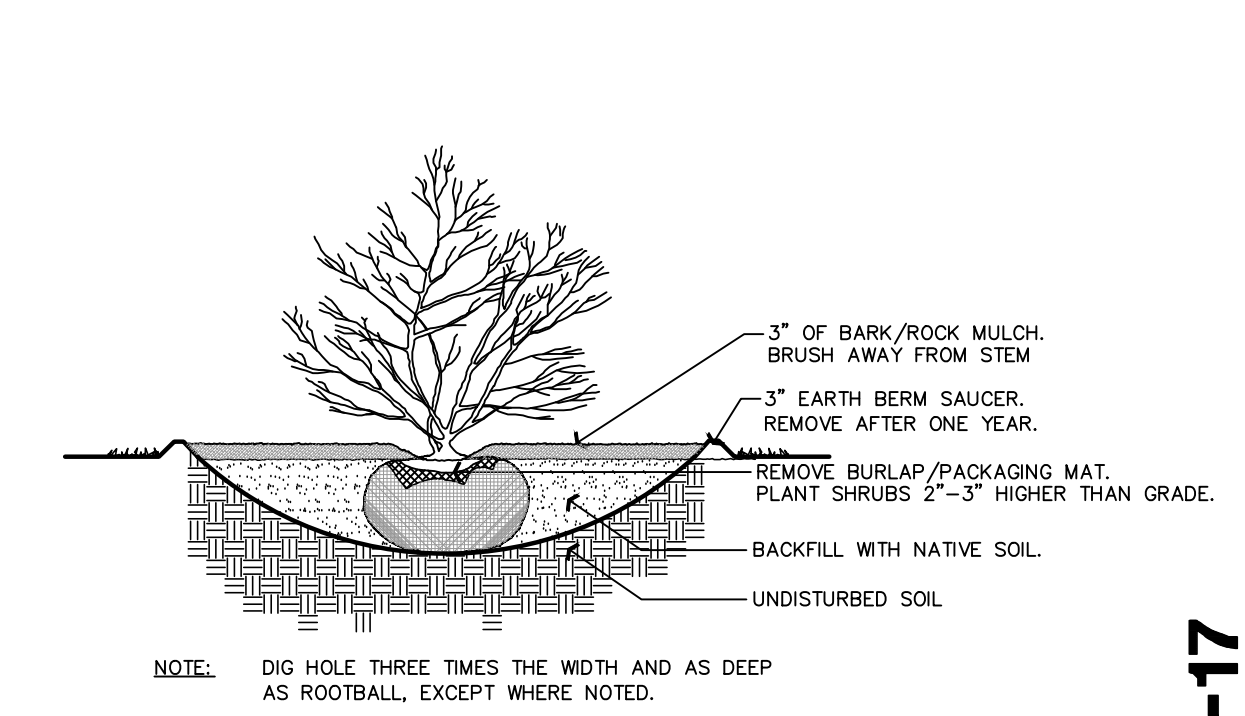
↓ ↓ Pasture grass to remain. Protect during construction. Repair/replace as needed.
 NOTE: All beds shall have a 3" layer of Shredded Bark Mulch.



CONIFEROUS TREE PLANTING
 SCALE: NOT TO SCALE



DECIDUOUS TREE PLANTING
 SCALE: NOT TO SCALE



SHRUB PLANTING
 SCALE: NOT TO SCALE

DEVELOPER:
 Kerry Wangsgard
 1322 E 2400 N
 North Ogden, UT 84414
 (801) 388-3114

Reeve & Associates, Inc.
 920 CHAMBERS STREET, SUITE 14, OGDEN, UTAH 84403
 TEL: (801) 621-2100 FAX: (801) 621-2666 WWW.REEVE-ASSOC.COM
IRA
 LAND PLANNERS • CIVIL ENGINEERS • LAND SURVEYORS
 PARTIAL ENGINEERS • STRUCTURAL ENGINEERS • LANDSCAPE ARCHITECTS

| REVISIONS | DATE | DESCRIPTION |
|-----------|---------|---------------------|
| | 9-17-15 | E.R. LAYOUT UPDATES |
| | 1-20-17 | C.C. LAYOUT UPDATES |
| | 2-09-17 | C.C. LAYOUT UPDATES |

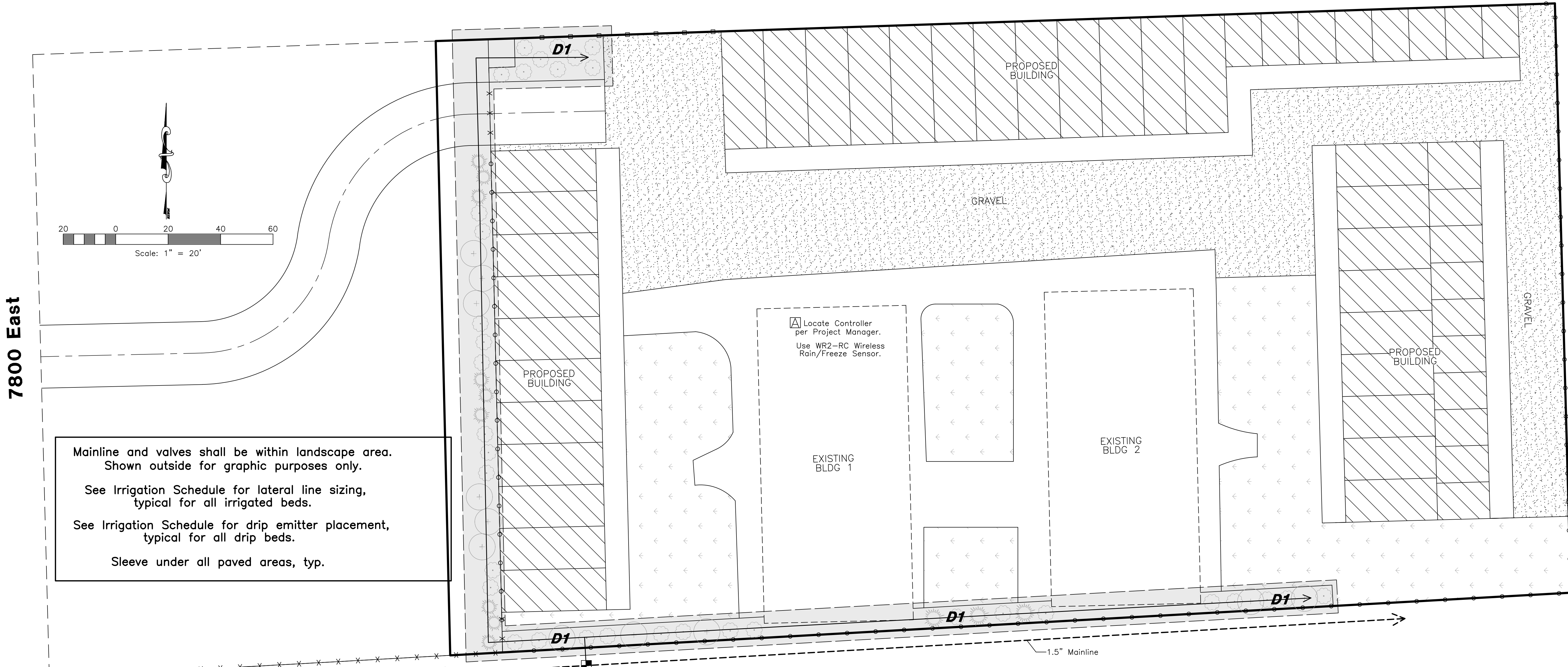
Wangsgard Property
 PART OF THE SE 1/4 OF SECTION 18, T.6N., R. 2E., S.1.B. & M., U.S. SURVEY
 HUNTSVILLE, WEBER COUNTY, UTAH
Landscape Plan

| |
|--|
| |
| |
| |

Project Info.
 Engineer: N. Reeve
 Designer: D. REYNOLDS
 Begin Date: Sept. 17, 2013
 Name: WANGSGARD PROPERTY
 Number: 6260-01

| | |
|-----------|----------|
| Sheet | 3 |
| L1 | Sheets |

Revised: 8-08-17



Mainline and valves shall be within landscape area. Shown outside for graphic purposes only.

See Irrigation Schedule for lateral line sizing, typical for all irrigated beds.

See Irrigation Schedule for drip emitter placement, typical for all drip beds.

Sleeve under all paved areas, typ.

Landscape contractor shall locate secondary waterline and determine PSI. Connect mainline to secondary waterline. Contractor shall determine zones size of rotor heads and number of valves needed for turf areas.

| SYMBOL | MANUFACTURER | CATALOG NUMBER | DESCRIPTION |
|--------|--------------|--|---|
| | RAINBIRD | 5004-PL-SAM-MPR | BODY AND RAIN CURTAIN ROTOR NOZZLE UNIT USE APPROPRIATE RADIUS PER TURF AREA |
| | RAINBIRD | RWS-B-C-1401 | ROOT WATERING SERIES, 0.25 GPM, 2 EMITTERS/TREE |
| | RAINBIRD | XB-T-20-PC | XERIBUG THREADED DRIP EMITTERS, 2 GAL/HOUR 1 EMITTER/1 GAL. PLANT, 2 EMITTERS/5 GAL. PLANT. |
| | RAINBIRD | XCZ-100-PRB-COM | COMMERCIAL CONTROL ZONE KIT DRIP VALVE |
| | | | VALVE ID BOX |
| | | | 1-1/2" MAINLINE - SCHEDULE 40 PVC |
| | | | DRIP LATERAL LINE - POLY PIPE MAY BE USED |
| | RAINBIRD | ESP(8 OR 12)LXME:120 VAC ESPLXSM (4,8,12) STATION MODULE | INDOOR/OUTDOOR MOUNT BASE CONTROLLER. ADD SPECIFIED MODULE. LANDSCAPE CONTRACTOR SHALL DETERMINE SIZE OF CONTROLLER. |
| | | | SLEEVING - SCHEDULE 40 PVC, 2 SIZES GREATER THAN INTERIOR PIPE SLEEVING USED WHENEVER IRRIGATION IS PLACED UNDER PAVED AREAS. |
| | | | GATE VALVE - SIZE PER PIPE - PLACE SLEEVE OVER VALVE |
| | WILKENS | MODEL 375 OR EQUAL | BACKFLOW PREVENTION, SIZE AS PER CITY/COUNTY REGULATIONS. |
| | RAINBIRD | MODEL 44LRC | 1" QUICK COUPLING VALVE |
| | | | IRRIGATION ZONES |

NOTE: USE STRONG BOX SBBC 30 AL ALUMINUM BOX TO ENCLOSE BACKFLOW PREVENTER.

NOTE: USE WR2-RC WIRELESS RAIN/FREEZE SENSOR.

NOTE: LANDSCAPE CONTRACTOR SHALL LOCATE SECONDARY WATERLINE AND DETERMINE PSI. CONNECT MAINLINE TO SECONDARY WATERLINE. CONTRACTOR SHALL DETERMINE ZONES, SIZE OF ROTOR HEADS AND NUMBER OF VALVES NEEDED FOR TURF AREAS.

Wangsgard Property

Huntsville City, Weber County, Utah

DEVELOPER:
 Kerry Wangsgard
 1322 E 2400 N
 North Ogden, UT 84414
 (801) 388-3114

Reeve & Associates, Inc.
 920 CHAMBERS STREET SUITE 14, OGDEN, UTAH 84403
 TEL: (801) 621-1100 FAX: (801) 621-8666 WWW.REEVE-ASSOC.COM
 LAND PLANNERS • CIVIL ENGINEERS • LAND SURVEYORS
 PARTIAL ENGINEERS • STRUCTURAL ENGINEERS • LANDSCAPE ARCHITECTS

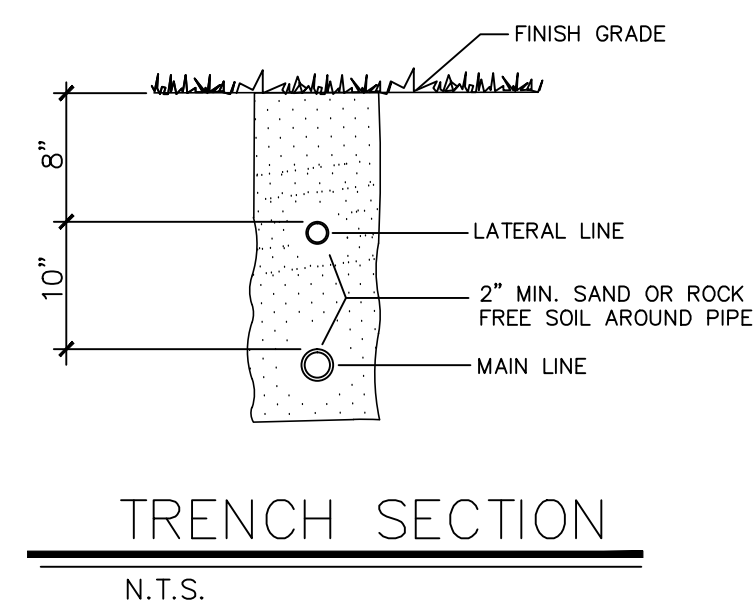
| REVISIONS | DATE | DESCRIPTION |
|-----------|---------|---------------------|
| | 9-17-15 | E.R. LAYOUT UPDATES |
| | 1-20-17 | C.C. LAYOUT UPDATES |
| | 2-09-17 | C.C. LAYOUT UPDATES |

Wangsgard Property
 PART OF THE SE 1/4 OF SECTION 18, T.6N., R. 2E., S.L.B. & M., U.S. SURVEY
 HUNTSVILLE, WEBER COUNTY, UTAH

Irrigation Plan

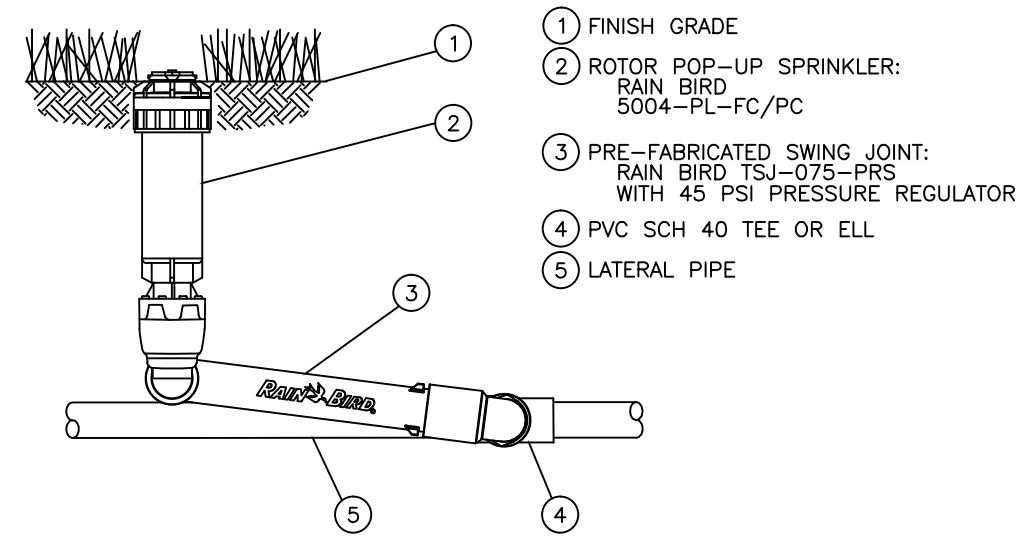
Project Info.
 Engineer: N. Reeve
 Designer: D. REYNOLDS
 Begin Date: Sept. 17, 2013
 Name: WANGSGARD PROPERTY
 Number: 6260-01

| | |
|-----------|----------|
| Sheet | 3 |
| L2 | Sheets |



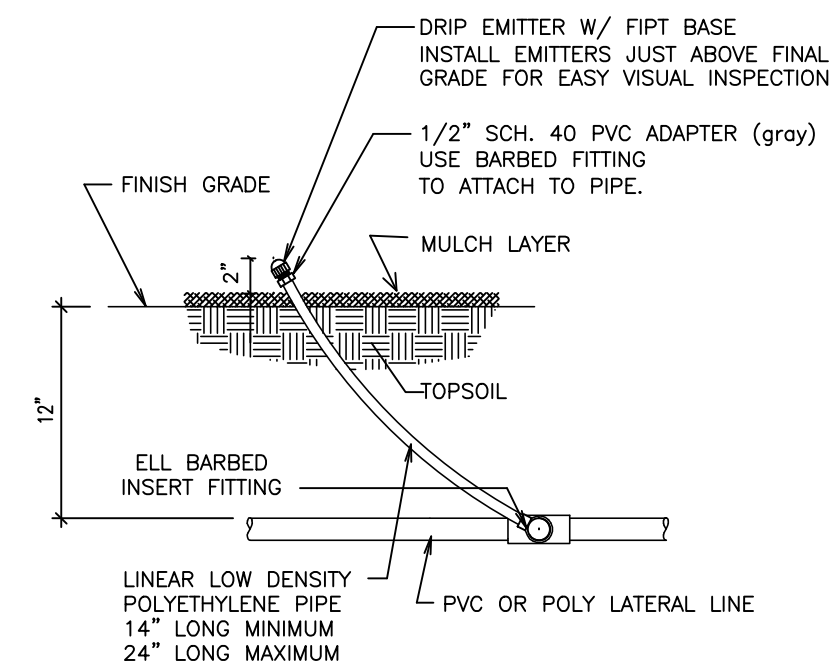
TRENCH SECTION

N.T.S.



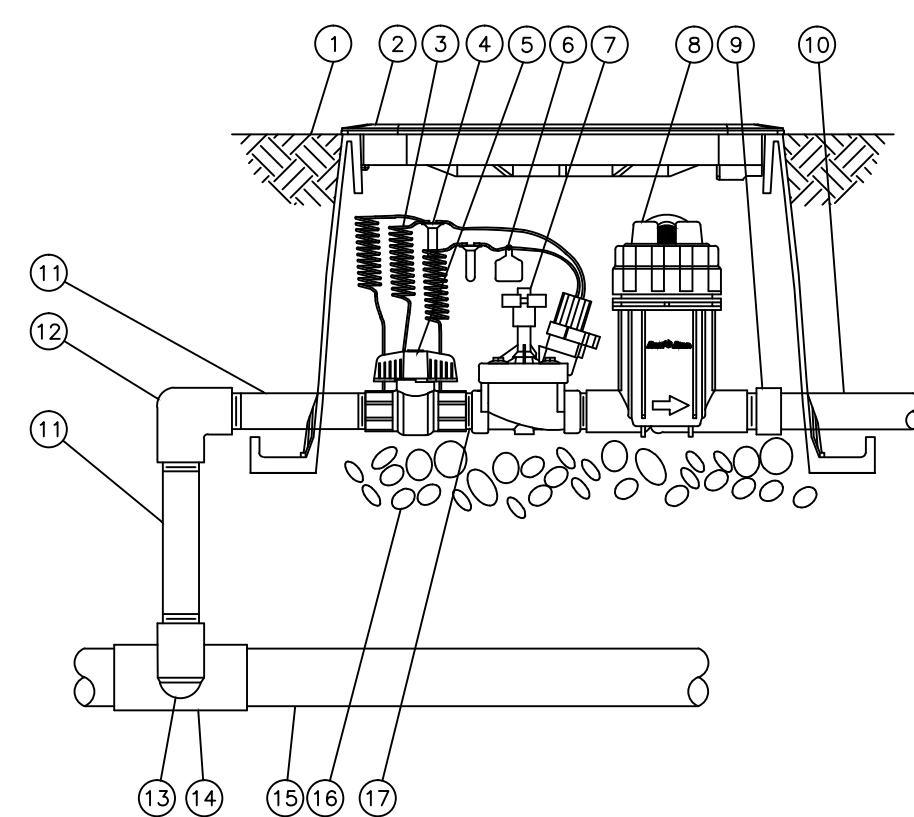
ROTOR POP-UP HEAD

N.T.S. 5004 PLUS



DRIP EMITTER

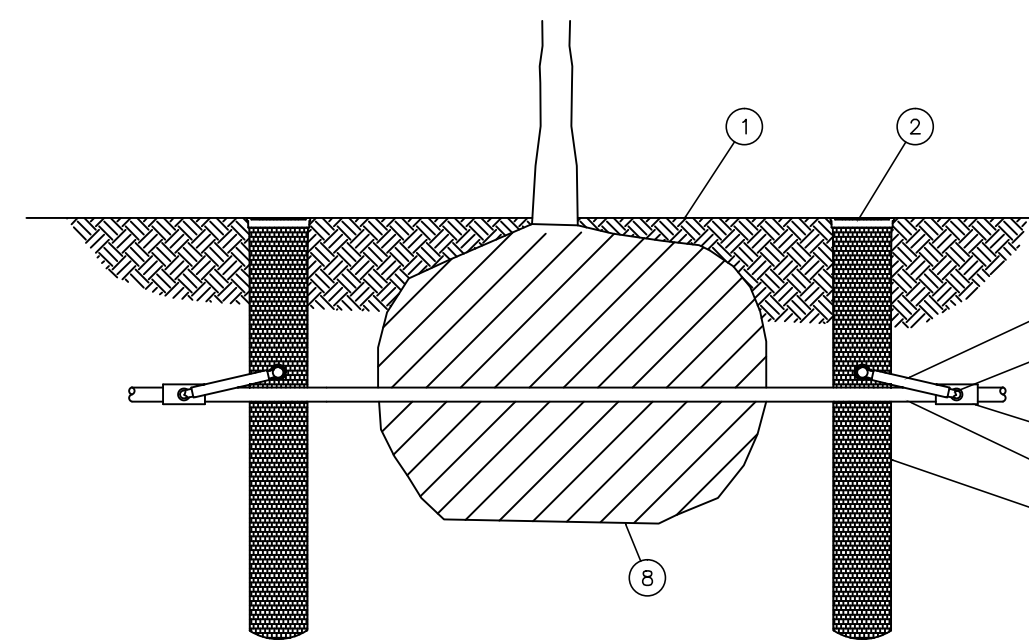
N.T.S.



CONTROL ZONE KIT DRIP VALVE

N.T.S. XCZ-PRB100-COM

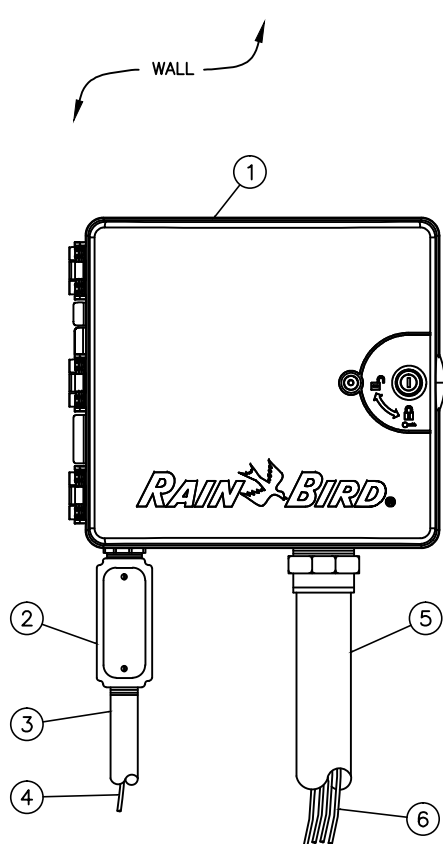
- 1 FINISH GRADE/TOP OF MULCH
- 2 VALVE BOX WITH COVER: RAIN BIRD VB-STD
- 3 30-INCH LINEAR LENGTH OF WIRE, COILED
- 4 WATERPROOF CONNECTION: RAIN BIRD DS SERIES
- 5 1-INCH BALL VALVE (INCLUDED IN XCZ-PRB-100-COM KIT)
- 6 ID TAG
- 7 REMOTE CONTROL VALVE: RAIN BIRD PESB (INCLUDED IN XCZ-PRB-100-COM KIT)
- 8 PRESSURE REGULATING QUICK CHECK BASKET FILTER: RAIN BIRD PRB-DKCHK-100 (INCLUDED IN XCZ-PRB-100-COM KIT)
- 9 PVC SCH 40 FEMALE ADAPTOR
- 10 LATERAL PIPE
- 11 PVC SCH 80 NIPPLE (LENGTH AS REQUIRED)
- 12 PVC SCH 40 ELL
- 13 PVC SCH 80 NIPPLE (2-INCH LENGTH, HIDDEN) AND PVC SCH 40 ELL
- 14 PVC SCH 40 TEE OR ELL
- 15 MAINLINE PIPE
- 16 3-INCH MINIMUM DEPTH OF 3/4-INCH WASHED GRAVEL
- 17 PVC SCH 80 NIPPLE, CLOSE (INCLUDED IN XCZ-PRB-100-COM KIT)



RWS ROOT WATERING SYSTEM

N.T.S. INSTALLATION FOR TREES

- 1 FINISH GRADE/TOP OF MULCH
 - 2 ROOT WATERING SERIES: RAIN BIRD RWS SERIES (1 OF 2 SHOWN, MORE POSSIBLE)
 - 3 SWING ASSEMBLY (INCLUDED) (1 OF 2 SHOWN, MORE POSSIBLE)
 - 4 1/2-INCH MALE NPT INLET (INCLUDED) (1 OF 2 SHOWN, MORE POSSIBLE)
 - 5 PVC SCH 40 TEE OR ELL (1 OF 2 SHOWN, MORE POSSIBLE)
 - 6 PVC OR POLYETHYLENE LATERAL PIPE
 - 7 OPTIONAL RWS SAND SOCK (RWS-SOCK) FOR SANDY SOILS (1 OF 2 SHOWN, MORE POSSIBLE)
 - 8 PLANT ROOT BALL
- NOTES:
 1. POSITION 2-3 UNITS (OR MORE) EVENLY SPACED AROUND PLANT. FOR NEW TREES PLACE NEAR ROOT BALL. FOR EXISTING TREES PLACE HALF THE DISTANCE BETWEEN CANOPY EDGE AND TREE TRUNK.
 2. INSTALL PRODUCT WITH TOP EVEN WITH GROUND SURFACE.
 3. RWS SERIES AVAILABLE IN THE FOLLOWING MODELS:
 RWS (NO BUBBLER/EMITTER INCLUDED)
 RWS-B-1401 (0.25 GPM)
 RWS-B-C-1401 (0.25 GPM, CHECK VALVE)
 RWS-B-X-1401 (0.25 GPM, 18" SWING ASSEMBLY)
 RWS-B-C-1402 (0.5 GPM, CHECK VALVE)
 RWS-B-1402 (0.5 GPM)
 RWS-B-C-1404 (1.0 GPM, CHECK VALVE)
 RWS-B-C-1408 (2.0 GPM, CHECK VALVE)
 4. WHEN INSTALLING IN EXTREMELY HARD OR CLAY SOILS, ADD 1/4" GRAVEL UNDER AND AROUND THE UNIT TO ALLOW FASTER WATER INFILTRATION AND ROOT PENETRATION.
 5. ONCE RWS HAS BEEN INSTALLED FILL THE BASKET WITH PEA GRAVEL BEFORE LOCKING LID.

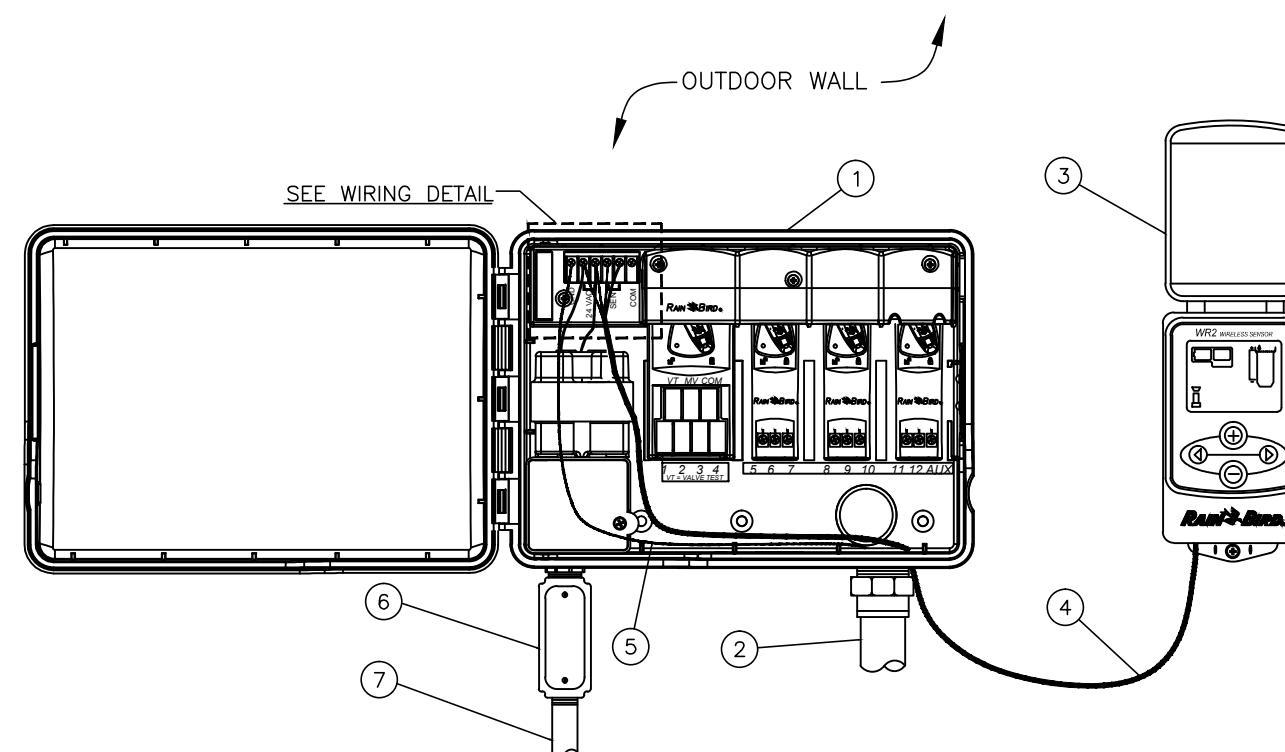


ESP-LXME CONTROLLER

N.T.S. IN PLASTIC CABINET FOR OUTSIDE MOUNT

- 1 IRRIGATION CONTROLLER: RAIN BIRD ESP-LXME CONTROLLER IN PLASTIC CABINET WITH WALL MOUNT. INSTALL CONTROLLER AND CABINET ON WALL PER MANUFACTURER'S RECOMMENDATIONS.
- 2 JUNCTION BOX
- 3 1-INCH CONDUIT AND FITTINGS TO POWER SUPPLY
- 4 POWER SUPPLY WIRE
- 5 2-INCH CONDUIT AND FITTINGS FOR STATION WIRES
- 6 WIRES TO REMOTE CONTROL VALVES

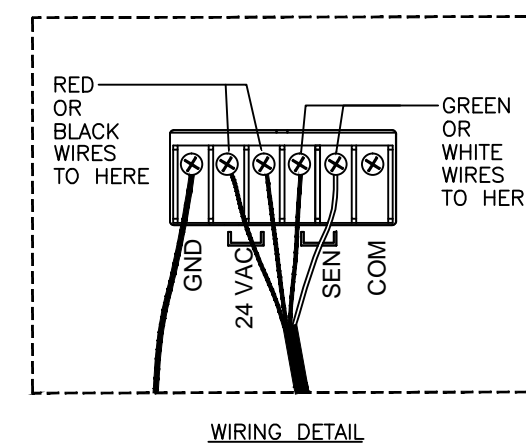
- NOTES:
 1. ESP-LXME CONTROLLER IS AVAILABLE IN 8- OR 12-STATION BASE MODELS. ADDITIONAL MODULES IN 4-, 8- AND 12-STATION VERSIONS MAY BE ADDED TO BRING THE CONTROLLER UP TO 48 STATIONS MAXIMUM.
 2. FOR EASE OF INSTALLATION INTO A CONTROLLER WITH MORE THAN 24 STATIONS, INSTALL A JUNCTION BOX AT THE BASE OF CONTROLLER AND TRANSITION LARGER VALVE AND COMMON WIRES FROM FIELD TO 18 AWG MULTI CONDUCTOR WIRE TO BE USED IN CONTROLLER.
 3. USE STEEL CONDUIT FOR ABOVE GRADE AND SCH 40 PVC CONDUIT FOR BELOW GRADE CONDITIONS.
 4. PROVIDE PROPER GROUNDING COMPONENTS TO ACHIEVE GROUND RESISTANCE OF 10 OHMS OR LESS.



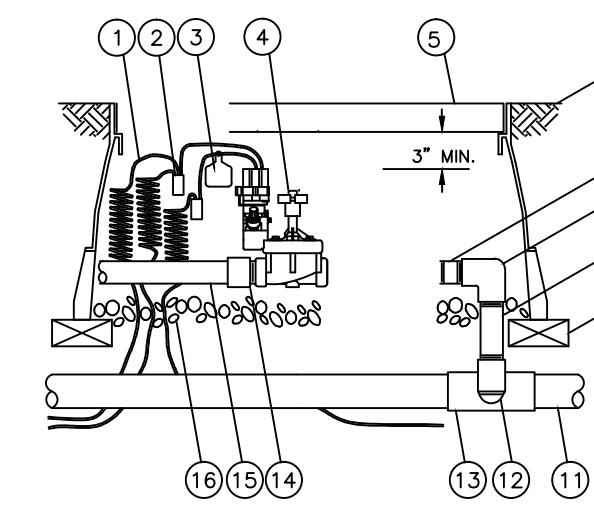
WIRELESS RAIN SENSOR-OUTDOOR

N.T.S. WR2 SERIES CONTROLLER INTERFACE

- NOTES:
 1. FOR BEST PERFORMANCE, THE CONTROLLER INTERFACE SHOULD BE INSTALLED AT LEAST FIVE FEET ABOVE THE GROUND.
 2. IT IS RECOMMENDED THAT THE CONTROLLER INTERFACE BE INSTALLED AWAY FROM SOURCES OF ELECTRICAL INTERFERENCE (SUCH AS TRANSFORMERS, GENERATORS, PUMPS, FANS, ELECTRICAL METER BOXES) AND METAL OBJECTS TO MAXIMIZE COMMUNICATION RANGE.



- 1 RAIN BIRD CONTROLLER: RAIN BIRD ESP-4M OUTDOOR WALL MOUNT
- 2 1-INCH PVC SCH 40 CONDUIT AND FITTINGS FOR VALVE WIRES
- 3 RAIN BIRD WR2 WIRELESS SENSOR CONTROLLER INTERFACE
- 4 CABLE HARNESS FOR CONTROLLER INTERFACE (30" MAXIMUM)
- 5 GROUND WIRE TO GROUNDING GRID
- 6 JUNCTION BOX
- 7 1/2-INCH PVC SCH 40 CONDUIT TO POWER SUPPLY



ELECTRIC REMOTE CONTROL VALVE

N.T.S. PEB OR PEB SERIES

- 1 30-INCH LINEAR LENGTH OF WIRE, COILED
- 2 WATERPROOF CONNECTION: RAIN BIRD SPLUCE-1 (1 OF 2)
- 3 ID TAG: RAIN BIRD VID SERIES
- 4 REMOTE CONTROL VALVE: RAIN BIRD PESB-PRS-D WITH NP-HAN
- 5 VALVE BOX WITH COVER: RAIN BIRD VB-STD
- 6 FINISH GRADE/TOP OF MULCH
- 7 PVC SCH 80 NIPPLE (CLOSE)
- 8 PVC SCH 40 ELL
- 9 PVC SCH 80 NIPPLE (LENGTH AS REQUIRED)
- 10 BRICK (1 OF 4)
- 11 PVC MAINLINE PIPE
- 12 SCH 80 NIPPLE (2-INCH LENGTH, HIDDEN) AND SCH 40 ELL
- 13 PVC SCH 40 TEE OR ELL
- 14 PVC SCH 40 MALE ADAPTOR
- 15 PVC LATERAL PIPE
- 16 3.0-INCH MINIMUM DEPTH OF 3/4-INCH WASHED GRAVEL

Reeve & Associates, Inc.
 920 CHAMBERS STREET, SUITE 14, OGDEN, UTAH 84403
 TEL: (801) 821-3100 FAX: (801) 821-2666 WWW.REEVE-ASSOC.COM
 LAND PLANNERS • CIVIL ENGINEERS • LAND SURVEYORS
 ARCHITECTS • STRUCTURAL ENGINEERS • LANDSCAPE ARCHITECTS

| REVISIONS | DATE | DESCRIPTION |
|-----------|---------|---------------------|
| | 9-17-15 | E.R. LAYOUT UPDATES |
| | 1-20-17 | C.C. LAYOUT UPDATES |
| | 2-09-17 | C.C. LAYOUT UPDATES |

Wangsgard Property
 PART OF THE SE 1/4 OF SECTION 18, T.6N., R. 2E., S.1.B. & M., U.S. SURVEY
 HUNTSVILLE, WEBER COUNTY, UTAH

Irrigation Details

Project Info.
 Engineer: N. Reeve
 Designer: D. REYNOLDS
 Begin Date: Sept. 17, 2013
 Name: WANGSGARD PROPERTY
 Number: 6260-01

Sheet **3**
 L3 Sheets

Wangsgard Property

Huntsville City, Weber County, Utah

DEVELOPER:
 Kerry Wangsgard
 1322 E 2400 N
 North Ogden, UT 84414
 (801) 388-3114

Revised: 8-8-17