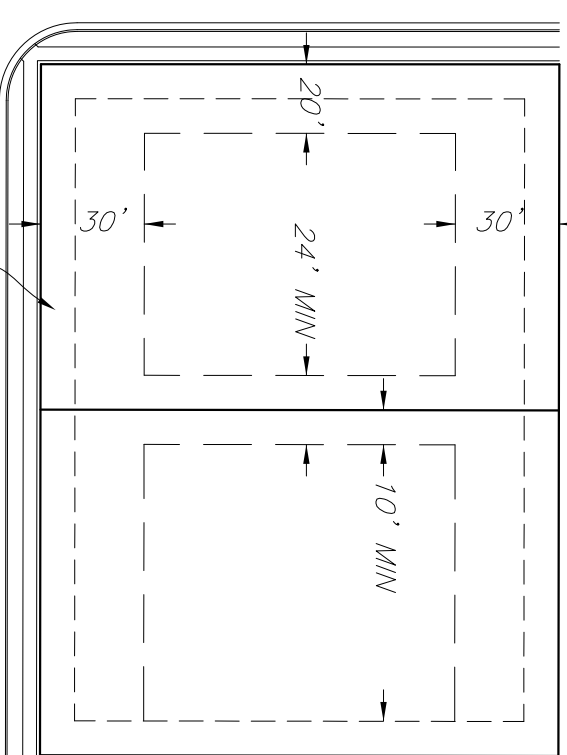
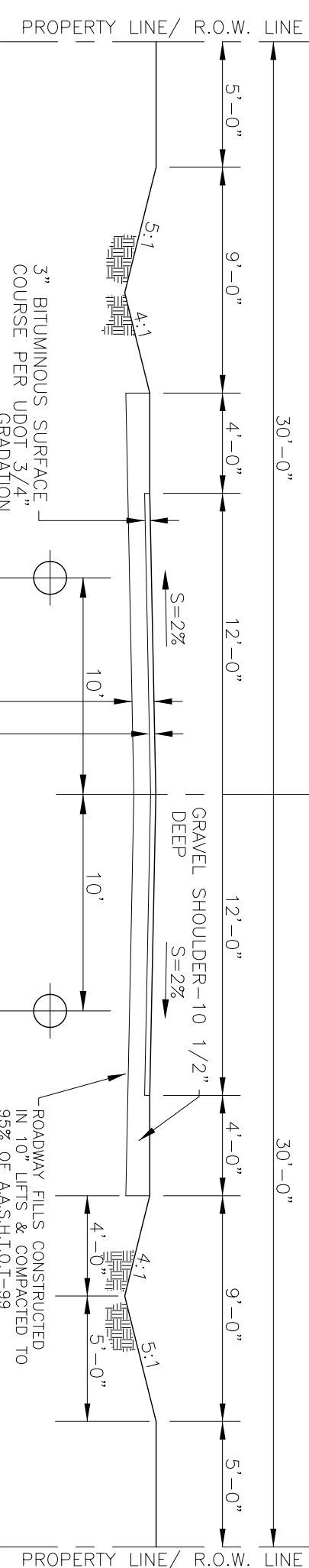


Vicinity Map

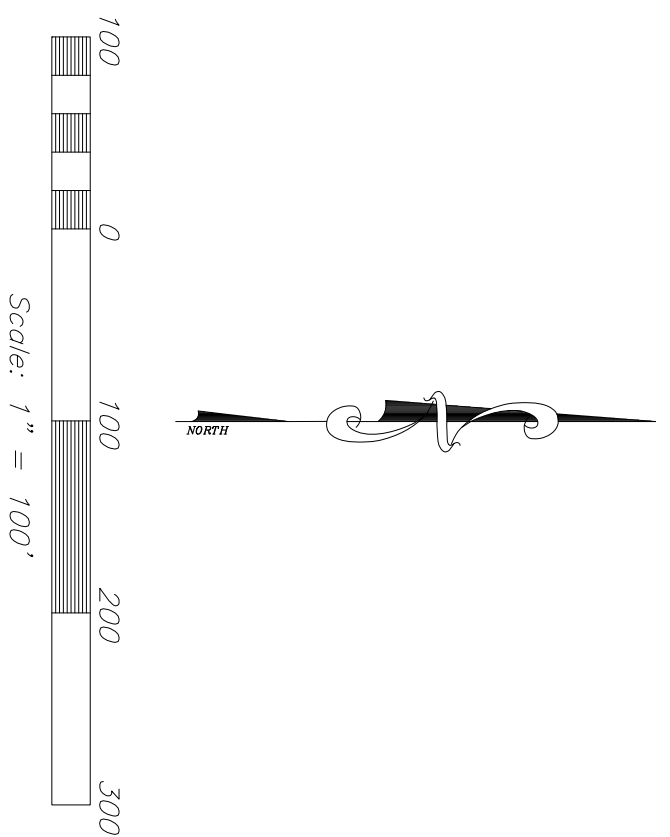
CENTER OF SECTION 7, T.6N., R.2W., S.L.B.&M., FOUND WEBER 3" 1981 BOM. IN GOOD CONDITION



Typical Lot Utility & Setback Easement
SCALE: NONE



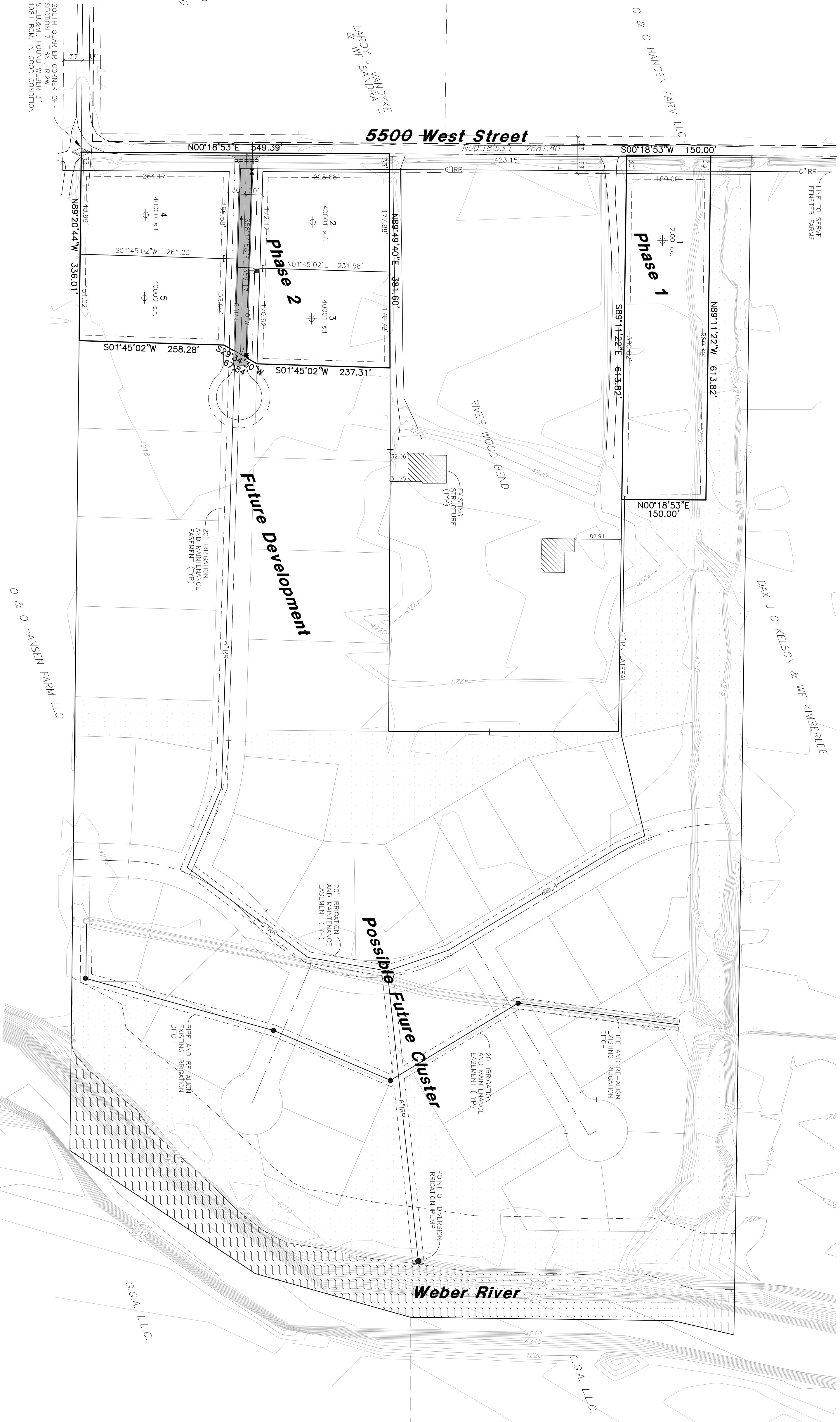
Street Section (60' R.O.W.)
SCALE: NONE



- NOTES:
1. CONTOURS ARE SHOWN WITH A ONE FOOT INTERVAL.
 2. PROJECT IS ZONED R-1.
 3. INDIVIDUAL LOT OWNERS.
 4. WE ARE REQUESTING SIDEWALKS AND CURB AND GUTTER BE DEFERRED BY AGREEMENT WITH THE COUNTY.

Legend

- SS — = PROPOSED SANITARY SEWER LINE
- EXIST SS — = EXISTING SANITARY SEWER LINE
- IRR — = PROPOSED IRRIGATION WATER LINE
- EXIST IRR — = EXISTING IRRIGATION WATER LINE (SIZE VARIES)
- W — = PROPOSED CULINARY WATER LINE (SIZE VARIES)
- EXIST W — = EXISTING CULINARY WATER LINE (SIZE VARIES)
- SD — = PROPOSED STORM DRAIN (SIZE VARIES)
- EXIST SD — = EXISTING STORM DRAIN
- X — = EXISTING FENCE LINE
- = PROPOSED FIRE HYDRANT
- = PROPOSED SANITARY SEWER MANHOLE
- = PROPOSED GATE VALVE
- = PLUG W/ 2" BLOW-OFF
- = PROPOSED STORM DRAIN MANHOLE
- = PROPOSED SINGLE GRATE CATCH BASIN WITH BICYCLE-SAFE GRATE
- = PROPOSED REDUCERS
- ▲ = PLUG & BLOCK
- ▲ = AIR-LOG ASSEMBLY
- = TEST PIT LOCATIONS



SOUTH QUARTER CORNER OF SECTION 7, T.6N., R.2W., S.L.B.&M., FOUND WEBER 3" 1981 BOM. IN GOOD CONDITION

Subdivider:

Allan Karros
Century 21
2609 N Main
Sunset, UT 80415

Lisa Estates - Phase 1 & 2

Weber County, Utah

THESE PLANS AND SPECIFICATIONS ARE THE PROPERTY OF REEVE & ASSOCIATES, INC., 4155 S. HARRISON BLVD., EXECUTIVE BLDG., #310, OGDEN, UTAH 84403, AND SHALL NOT BE REPRODUCED, RE-DRAWN, OR USED ON ANY PROJECT OTHER THAN THE PROJECT SPECIFICALLY DESIGNED FOR, WITHOUT THEIR WRITTEN PERMISSION. THE OWNERS AND ENGINEERS OF REEVE & ASSOCIATES, INC. DISCLAIM ANY LIABILITY FOR ANY CHANGES OR MODIFICATIONS MADE TO THESE PLANS OR THE DESIGN THEREON WITHOUT THEIR CONSENT.



REVISIONS	
DATE	DESCRIPTION
6/24/10	WATER DISTRICT REVISIONS
1/11/11	COUNTY REDLINES

Lisa Estates - Phase 1 & 2
A PART OF THE SE QUARTER OF SECTION 7, T.6N., R. 2W., S.L.B & M., U.S. SURVEY
WEBER COUNTY, UTAH

Preliminary Design

Preliminary
INFORMATION CONTAINED HEREIN HAS NOT BEEN FINAL CHECKED. IT IS PROVIDED AT THIS TIME FOR PRELIMINARY REVIEW ONLY AND THE DATA SHOWN HEREON SHOULD NOT BE RELIED UPON FOR FINAL DESIGN AND/OR CONSTRUCTION.

Project Info.

Engineer: J. Reeve
Designer: C. Cove
Drafter: C. Cove
Begin Date: April 21, 2010
Name: Lisa Estates
Phase: 1 & 2
Number: 1714-27

Sheet	1
Sheets	1