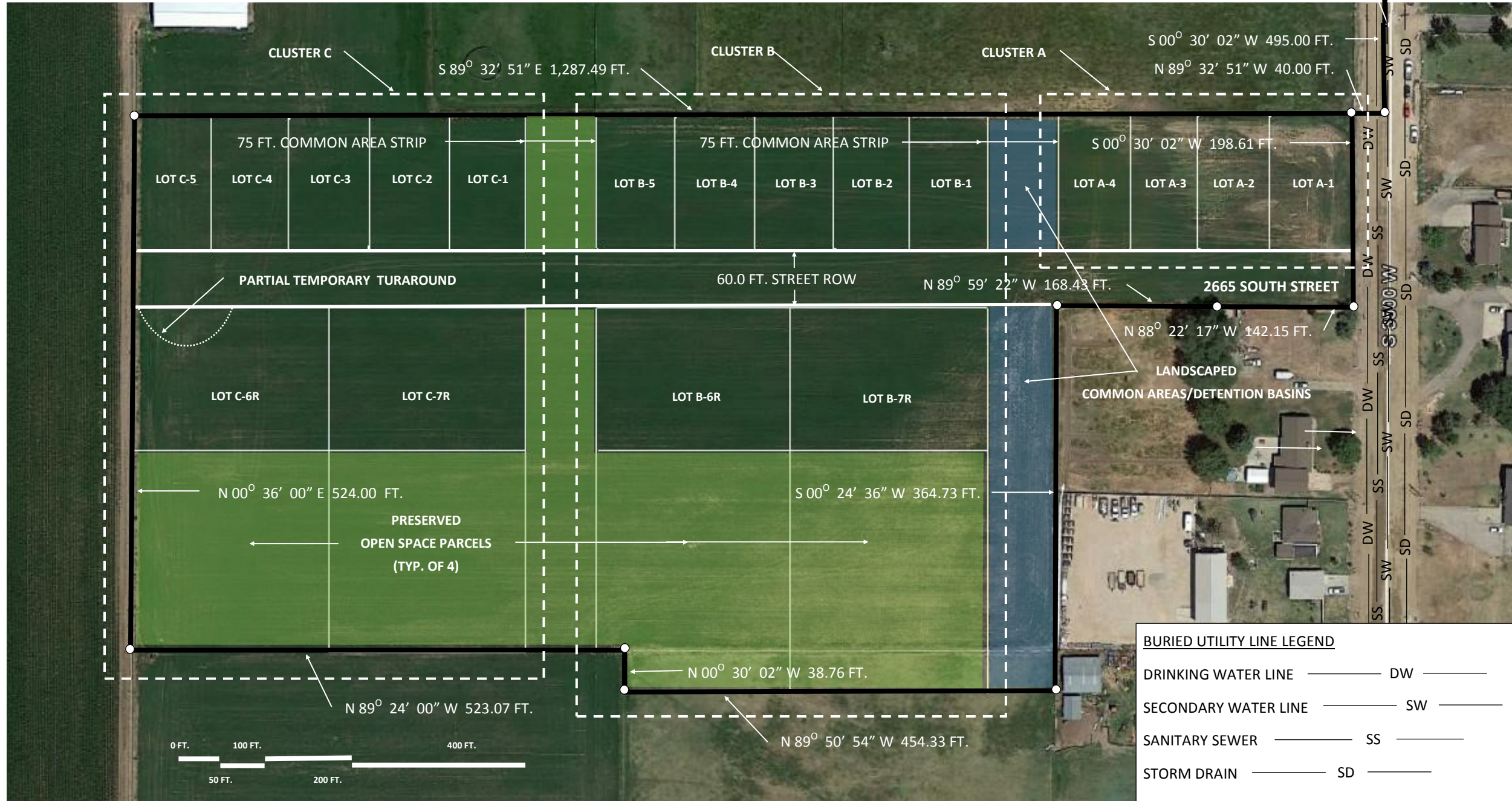


**STAKER FARMSTEAD ESTATES
RESIDENTIAL CLUSTER SUBDIVISION
NE 1/4 SECTION 33 TOWNSHIP 6 NORTH RANGE 2 WEST SLB&M**

NE SECTION CORNER
SECTION 33 T6N R2W SLB&M



TOTAL DEVELOPMENT ACREAGE SUMMARY	
Total Acreage	13.57
Total Street Acreage	1.61
Total Common Acreage	1.72
Total Cluster A Developable Acreage	0.90
Total Cluster B Developable Acreage	2.42
Total Cluster B Preserved Open Space Acreage	2.44
Total Cluster C Developable Acreage	2.42
Total Cluster C Preserved Open Space Acreage	2.06
Total Developable Acreage All Clusters	5.74
Total Preserved Open Space & Common Area	6.22

INDIVIDUAL CLUSTER ACREAGE SUMMARY				
Cluster	Lot	Ft ²	DV Ft ²	OD Ft ²
Cluster A	A-1	9,800		
	A-2	9,800		
	A-3	9,800		
	A-4	9,800		
Cluster B	B-1	9,600		
	B-2	9,600		
	B-3	9,600		
	B-4	9,600		
	B-5	9,600		
	B-6R		28,750	52,510
	B-7R		28,750	53,770
Cluster C	C-1	9,600		
	C-2	9,600		
	C-3	9,600		
	C-4	9,600		
	C-5	9,600		
	C-6R		28,750	44,870
	C-7R		28,750	44,870

BURIED UTILITY LINE LEGEND

DRINKING WATER LINE ——— DW ———

SECONDARY WATER LINE ——— SW ———

SANITARY SEWER ——— SS ———

STORM DRAIN ——— SD ———

Table Notes:

1. DV Ft² : Developable Lot Area'

2. OS Ft² : Preserved Open Space Lot Area

E. Hal Christensen, SE, PE	ALPINE ENGINEERING & CONSTRUCTION, LLC Land Development Public Works-Water & Wastewater Utilities P.O. Box 13059, Ogden, UT 84412 (801) 458-9647			PRELIMINARY PLAN SUBMITTAL	
				18 LOT RESIDENTIAL CLUSTER SUBDIVISION WEBER COUNTY, UTAH	
	Rev. Date	Reviewed	Submittal	Approximate Address: 2665 South 3500 West Taylor, Utah 84401	Date of Submittal: March 28, 2017
	12/16/2016	EHC	Conceptual Sketch Plan	Partial Legal: NE ¼ Section 33, Township 6 North, Range 2 West SLB&M	Submittal: Weber County Planning Commission
	4/3/2017	EHC	Property Boundary Change per RLS Plat	Recorded Weber County Tax Assessor Tax ID Number: 15-088-0035	Current Zoning Designation: A-1
			Record Property Ownership: Val E. & Linda L. Staker		
			Land Surveyor: David E. Hawkes, PLS, 1295 North 1700 West, Far West, UT 84404	SHEET 1 OF 1	