

GENERAL NOTES:

THE CONTRACTOR TO USE BEST MANAGEMENT PRACTICES FOR PROVIDING EROSION CONTROL FOR CONSTRUCTION OF THIS PROJECT. ALL MATERIAL AND WORKMANSHIP SHALL CONFORM TO WEBER COUNTY ORDINANCES AND ALL WORK SHALL BE SUBJECT TO INSPECTION BY WEBER COUNTY. ALSO, INSPECTORS WILL HAVE THE RIGHT TO REQUEST CHANGES TO THE FACILITIES AS NEEDED.

DUST MUST BE KEPT TO A MINIMUM. CONTRACTOR SHALL KEEP THE SITE WATERED TO CONTROL DUST. CONTACT POWDER MOUNTAIN WATER & SEWER IMPROVEMENT DISTRICT TO LOCATE A NEARBY HYDRANT FOR USE AND TO INSTALL TEMPORARY METER.

THE CONTRACTOR SHALL MODIFY EROSION CONTROL MEASURES TO ACCOMMODATE PROJECT PLANNING.

ALL ACCESS TO PROPERTY WILL BE FROM PUBLIC RIGHT-OF-WAYS.

THE CONTRACTOR IS REQUIRED BY STATE AND FEDERAL REGULATIONS TO PREPARE A STORM WATER POLLUTION PREVENTION PLAN AND FILE A "NOTICE OF INTENT" WITH THE UTAH DEPARTMENT OF ENVIRONMENTAL QUALITY DIVISION OF WATER QUALITY.

ENSURE ALL GRADING SLOPES AWAY FROM STRUCTURE AT 5% FOR A MINIMUM OF 10' PER IRC R401.3

UTILITIES:

ENSURE MINIMUM BURIED DEPTH PER BUILDING CODE FOR ALL BURIED UTILITIES.

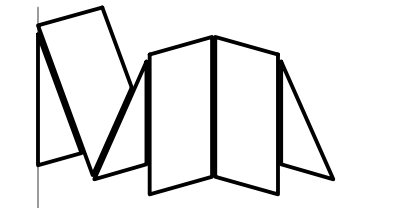
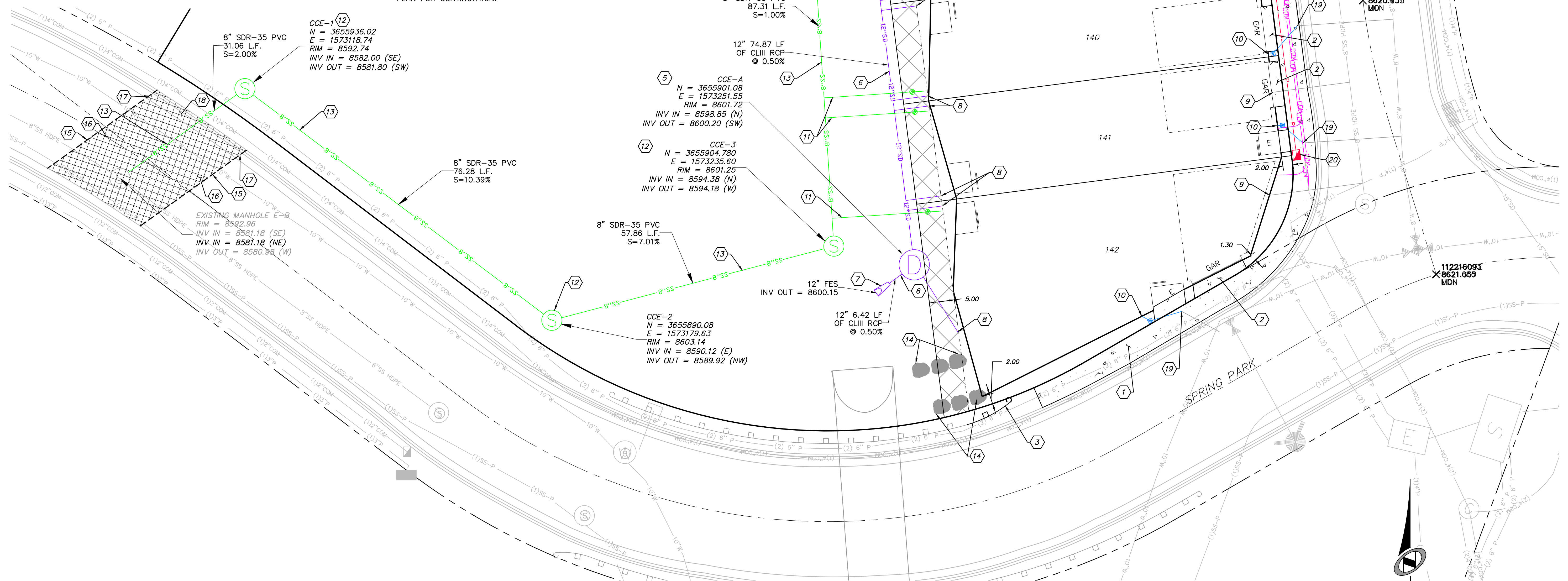
IMPROVEMENTS, INCLUDING LANDSCAPING, SHALL NOT INTERFERE WITH THE DRAINAGE CULVERT, RIP RAP, AND DRAINAGE PATTERN ASSOCIATED WITH ANY DRAINAGE EASEMENT.

KEY NOTES:

- 1 CONST. 6" THICK SIDEWALK PER APWA PLAN NO. 231
- 2 INSTALL DRIVE WAY PER APWA PLAN NO. 216
- 3 REMOVE PORTION OF EXISTING GUARDRAIL AND END SECTION, REINSTALL END SECTION AND TYPE II ANCHOR PER UDOT BA 4C1 & BA 4C2
- 4 INSTALL 4' STORM DRAIN MANHOLE PER APWA PLAN NO. 341
- 5 INSTALL 6' STORM DRAIN SUMP PER DETAIL ON SHEET 5.00

KEY NOTES CONTINUED:

- 6 INSTALL 12" CLIII RCP DRAINAGE PIPE PER APWA STANDARD PLAN NO. 381, 382.
- 7 INSTALL 12" FLARED END SECTION PER DETAIL ON SHEET 5.00
- 8 INSTALL 4" HDPE DRAINAGE PIPE ROOF DRAIN LATERAL, INV. AT STUB = 8601.00. SEE PLUMBING PLAN FOR CONTINUATION. EXIST.
- 9 4" SANITARY SEWER LATERAL TO BE CUT AND CAPPED AS NEEDED.
- 10 WATER SERVICE LATERAL AND 1" METER PER APWA STANDARD PLAN NO. 521. SEE MECH. PLANS FOR CONNECTION.
- 11 INSTALL 4" SANITARY SEWER LATERAL. SEE MECH. PLANS FOR CONNECTION.
- 12 INSTALL 4' SANITARY SEWER MANHOLE PER APWA STANDARD PLAN NO. 411.
- 13 INSTALL 8" SDR-35 PVC SEWER PIPE PER APWA STANDARD PLAN NO. 381, 382.
- 14 REGRADE AND RECONSTRUCT 2' - 4' ROCKERY, MATCH EXISTING ROCKERY CONSTRUCTION
- 15 SAWCUT AND PROPERLY DISPOSE OF EXISTING ASPHALT AT 20' ON EITHER SIDE OF PROPOSED SEWER.
- 16 REPAIR ASPHALT PER APWA PLAN NO. 255. MATCH EXISTING PAVEMENT SECTION (4" HMA, 4" OF 1 1/2" UTBC, 6" OF 3" BORROW)
- 17 SAWCUT AND PROPERLY DISPOSE OF EXISTING CONCRETE.
- 18 REPAIR SECTION OF CURB AND GUTTER. TYPE F CURB & GUTTER PER APWA PLAN NO. 205
- 19 INSTALL 45° BEND
- 20 INSTALL ELECTRICAL JUNCTION BOX OLDCASTLE B03 UTILITY BOX WITH REINFORCED CONCRETE LID. COORDINATE WITH ELECTRICAL PLAN AND RMP FOR CONTINUATION.
- 21 INSTALL COMMUNICATIONS JUNCTION BOX OLDCASTLE B03 UTILITY BOX WITH REINFORCED CONCRETE LID. COORDINATE WITH ELECTRICAL PLAN FOR CONTINUATION.



architect
STUDIO MA
 130 N Central Avenue No.300
 Phoenix, Arizona 85004
 T 602 251 3800

sma project no.
14-078

sma project name
NINEBARK

COPYRIGHT 2016
STUDIO MA
 This document is an instrument of service and shall remain the property of the Architect, who shall retain all common law, statutory and other reserved rights, including the copyright thereto.



PRELIMINARY.
 NOT FOR
 CONSTRUCTION
 OR
 RECORDING

c1.02
 OVERALL SITE
 & UTILITY
 PLAN

1"=10'
 Scale



PERMIT SET
 phase / rev
 2017.01.26
 date