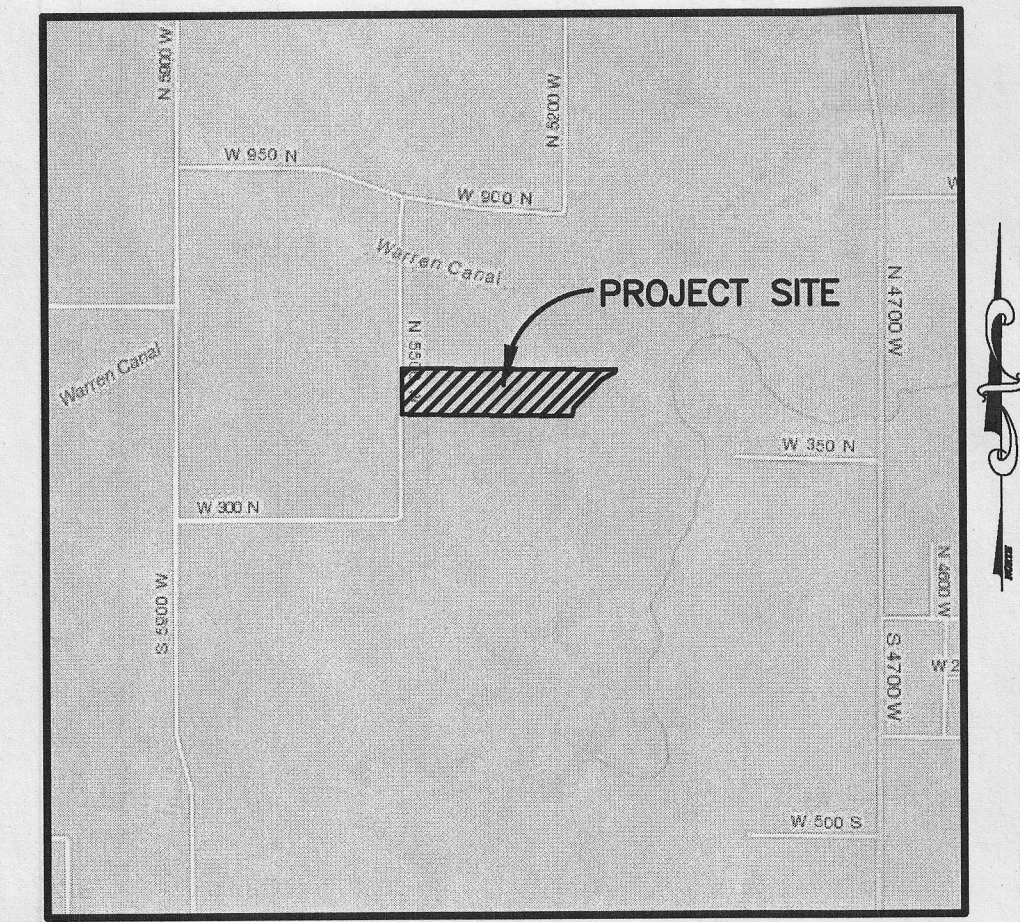
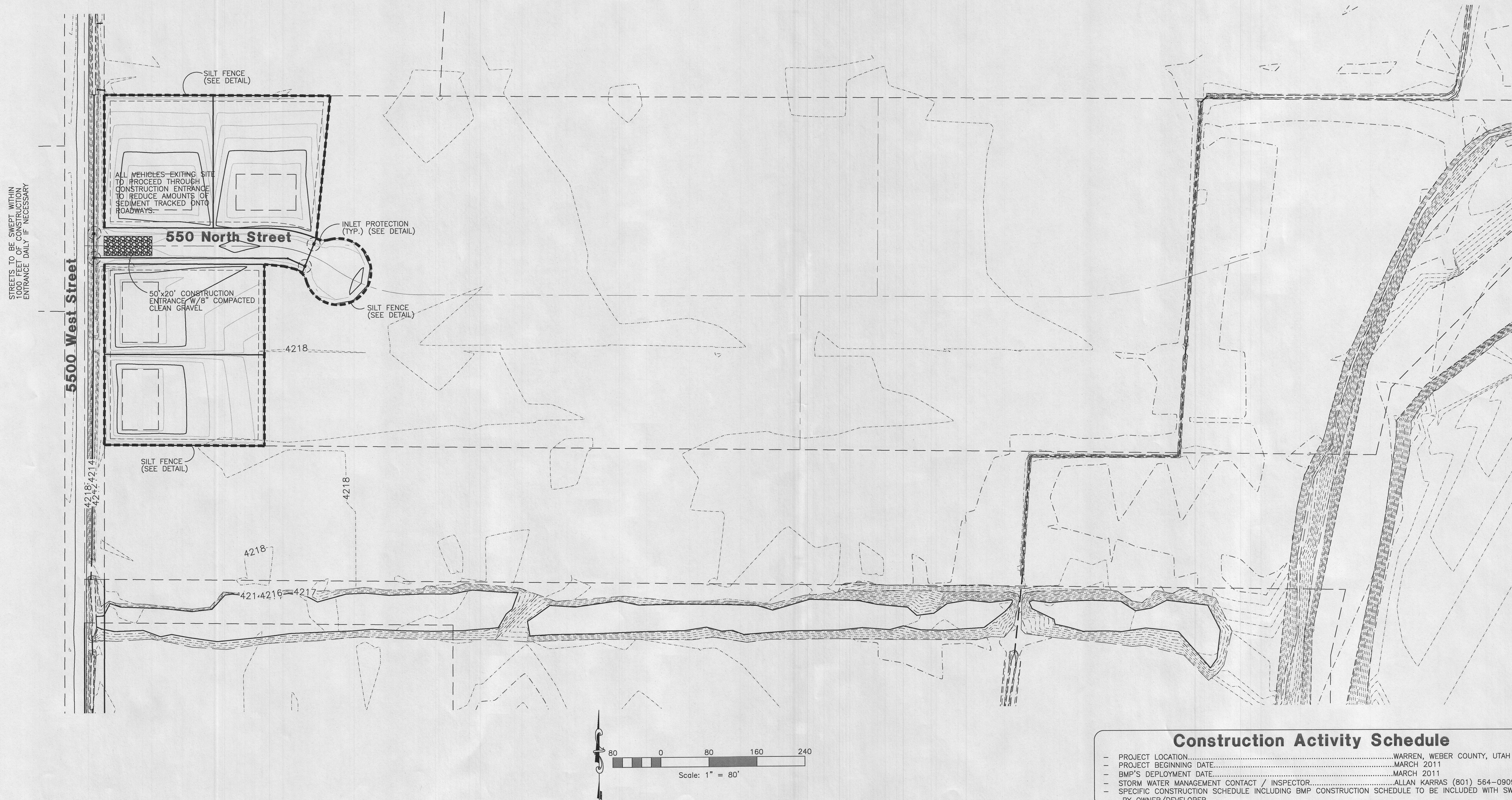


WARREN, WEBER COUNTY, UTAH
MARCH, 2011



Vicinity Map
NOT TO SCALE



Construction Activity Schedule

- PROJECT LOCATION.....WARREN, WEBER COUNTY, UTAH
- PROJECT BEGINNING DATE.....MARCH 2011
- BMP'S DEPLOYMENT DATE.....MARCH 2011
- STORM WATER MANAGEMENT CONTACT / INSPECTOR.....ALLAN KARRAS (801) 564-0909
- SPECIFIC CONSTRUCTION SCHEDULE INCLUDING BMP CONSTRUCTION SCHEDULE TO BE INCLUDED WITH SWPPP
BY OWNER/DEVELOPER

**Reeve
& Associates, Inc.**
4155 S. HARRISON BLVD., SUITE 310, OGDEN, UTAH 84403
TEL: (801) 621-3100 FAX: (801) 621-2666 www.reeve-associ.com
LAND PLANNERS • CIVIL ENGINEERS • LAND SURVEYORS
TRAFFIC ENGINEERS • STRUCTURAL ENGINEERS • LANDSCAPE ARCHITECTS

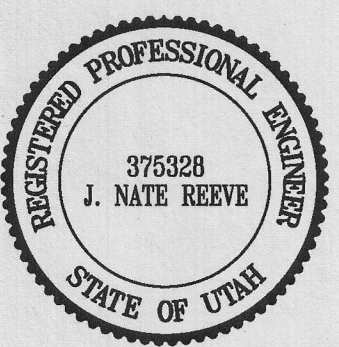


REVISIONS		DATE	DESCRIPTION
	4-14-11	RH	County Comments
	6-15-11	RH	County Comments
	9-29-11	RH	County Comments
	6-29-12	RH	County Comments
	8-01-12	RH	County Comments
	9-24-12	RH	County Comments
	2-28-13	RH	County Comments

●

Fenster Farm Subdivision Phase-1

Storm Water Pollution Prevention Plan Exhibit

**Project Info.**

Project Info:
Engineer: J. NATE REEVE, P.E.
Drafter: R. HANSEN
Begin Date: MARCH 16, 2011
Name: FENSTER FARM
SUBDIVISION
PHASE-1
Number: 1714-26

Sheet	7
6	
	Sheets