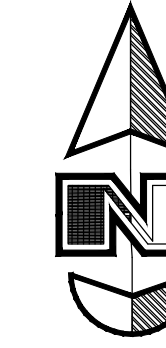
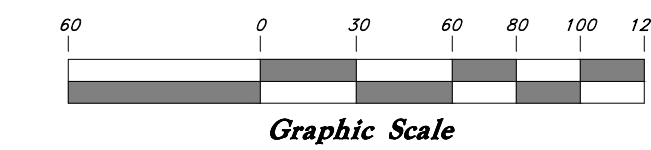


TERAKEE VILLAGE® - Phase 2

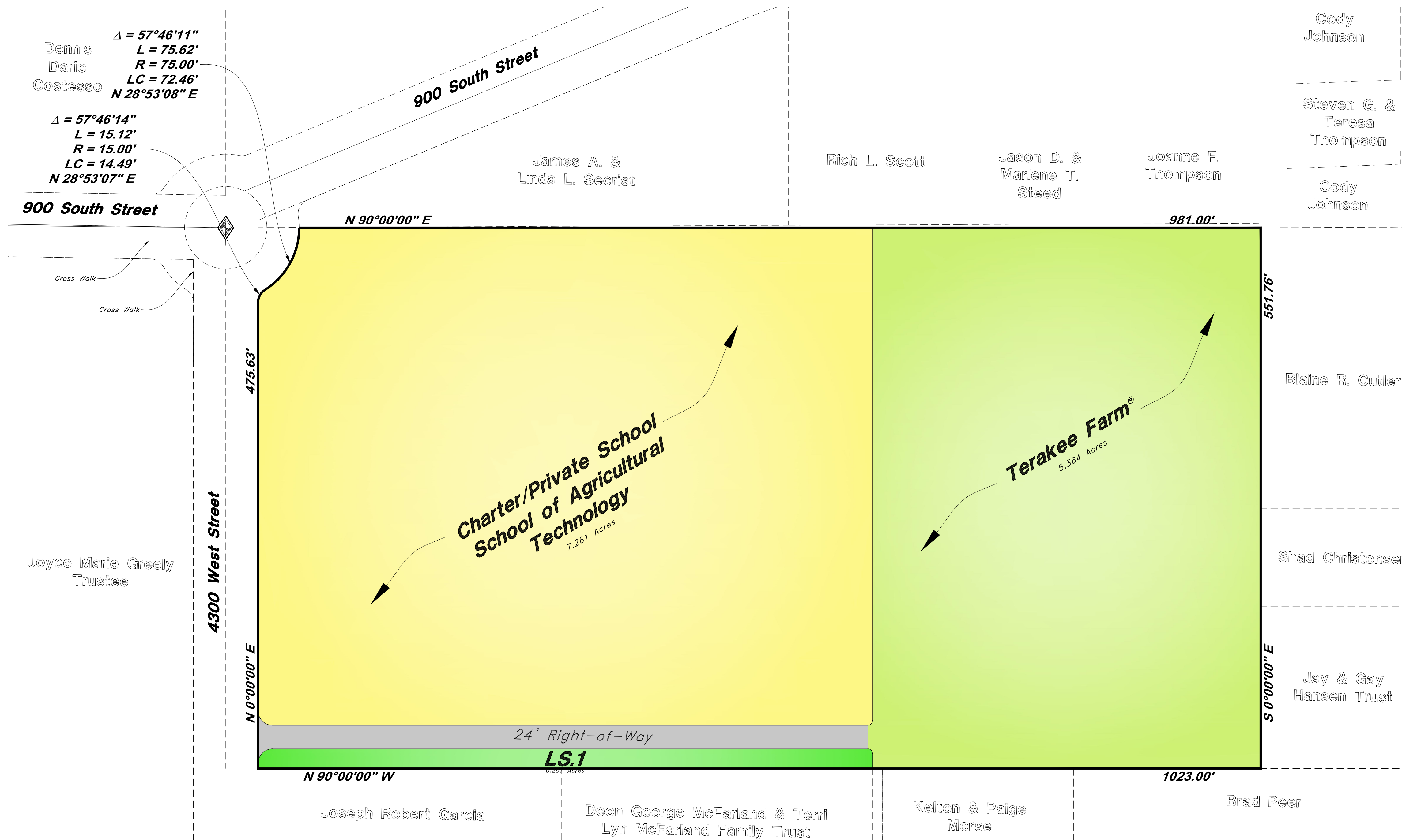
Charter/Private School
Agricultural Technology
Weber County, Utah
(15-059-0026)



Scale: 1" = 60'



Graphic Scale

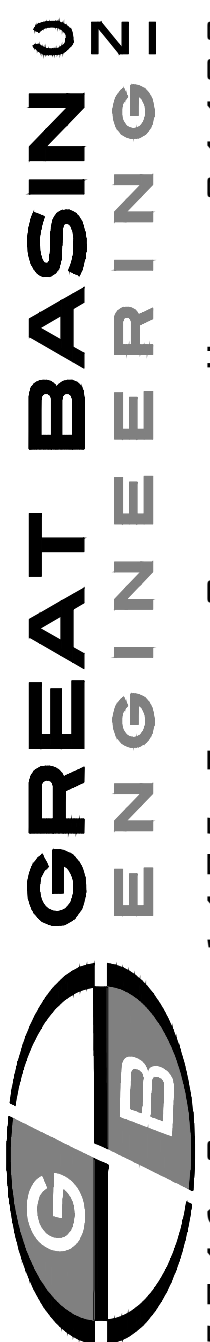


AREA SUMMARY

Total Area	=	3,117,333 Sq. Ft.	(71.56 Acres)
Net Area	=	2,787,971 Sq. Ft.	(64.00 Acres)
Open Space	=	1,371,088 Sq. Ft.	(31.48 Acres) 49.18%
Base Units	=	70	
Total Units	=	104	
Bonus Density	=	48.57%	(Requested)

LEGEND

- Terakee Farms
- Charter/Private School
- Landscaped Area/Parks
- Roadways



Overall Development Plan

Terakee Village® - Phase 2

Weber County, Utah
A part of Section 21, T6N, R2W, S1&2M, U.S. Survey

3 Mar, 2017

SHEET NO.

1

16N719