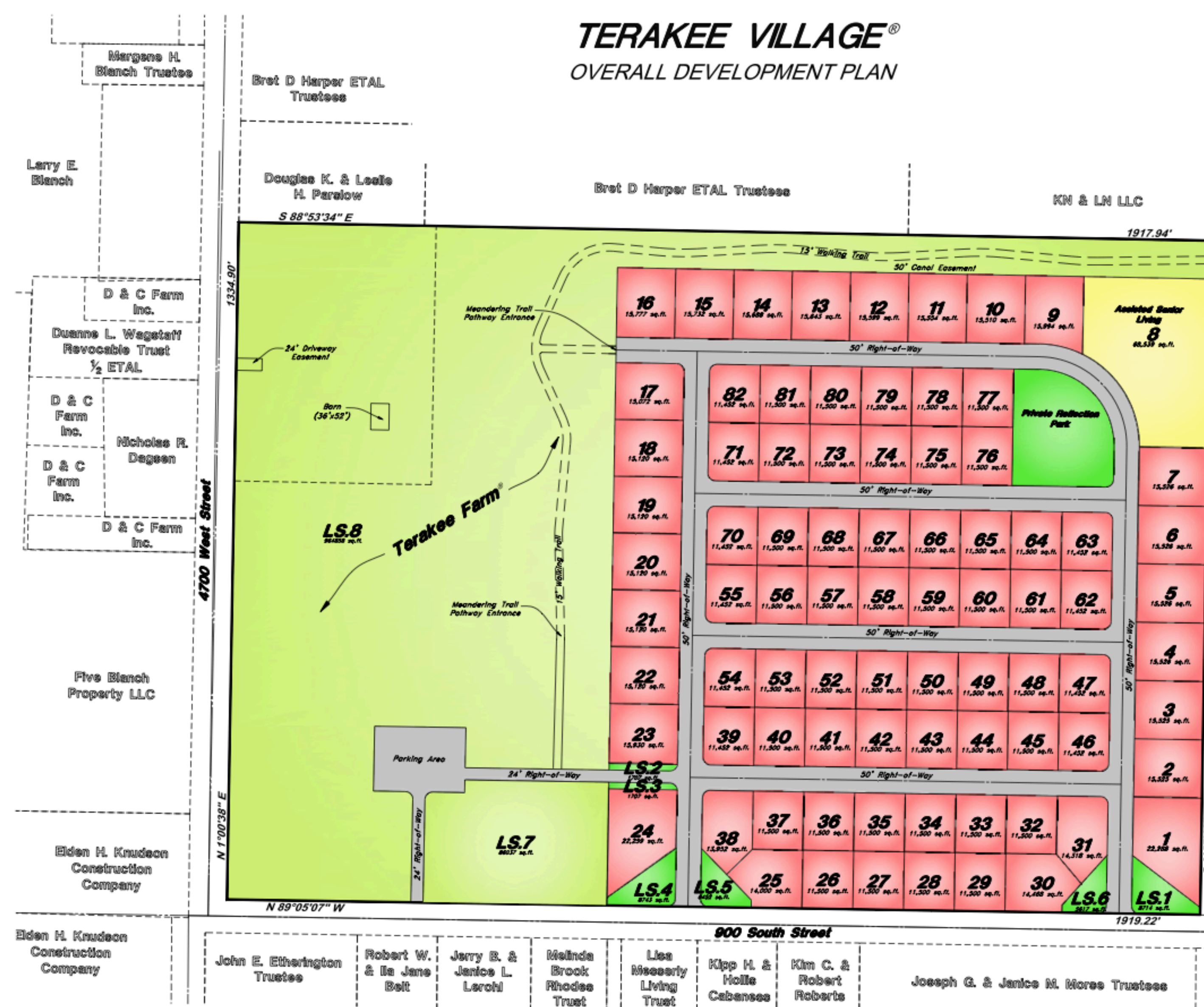
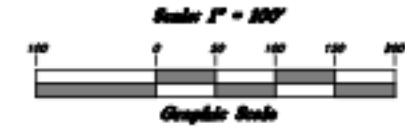


TERAKEE VILLAGE®

OVERALL DEVELOPMENT PLAN



AREA SUMMARY

Total Area	=	2,554,920 Sq. Ft.	(58.65 Acres)
Net Area	=	2,240,543 Sq. Ft.	(51.44 Acres)
Open Space	=	1,124,950 Sq. Ft.	(25.83 Acres) 50.20%
Base Units	=	56	
Total Units	=	84	
Bonus Density	=	50.00%	(Requested)

VILLAGE FOCUS

- Planned Residential Unit Development
- Landscaped Streets
- Provide Services Local Residents Need/Want
- "Get To Know Your Neighborhood Community"
- International Dark Skies Compliant

LEGEND

Open Space	
Landscaped Area/Parks	
Residential Lots	
Commercial Lots	
Roadways	

GREAT BASIN ENGINEERING
 5746 SOUTH 1475 EAST, SUITE 100, UTAH 84403
 P.O. BOX 100, SALT LAKE CITY, UT 84111
 WWW.GREATBASINENGINEERING.COM

Overall Development Plan
Terakee Village® PRUD Subdivision
 Weber County, Utah
 A part of Section 17, T6N, R2W, S28&M, U.S. Survey