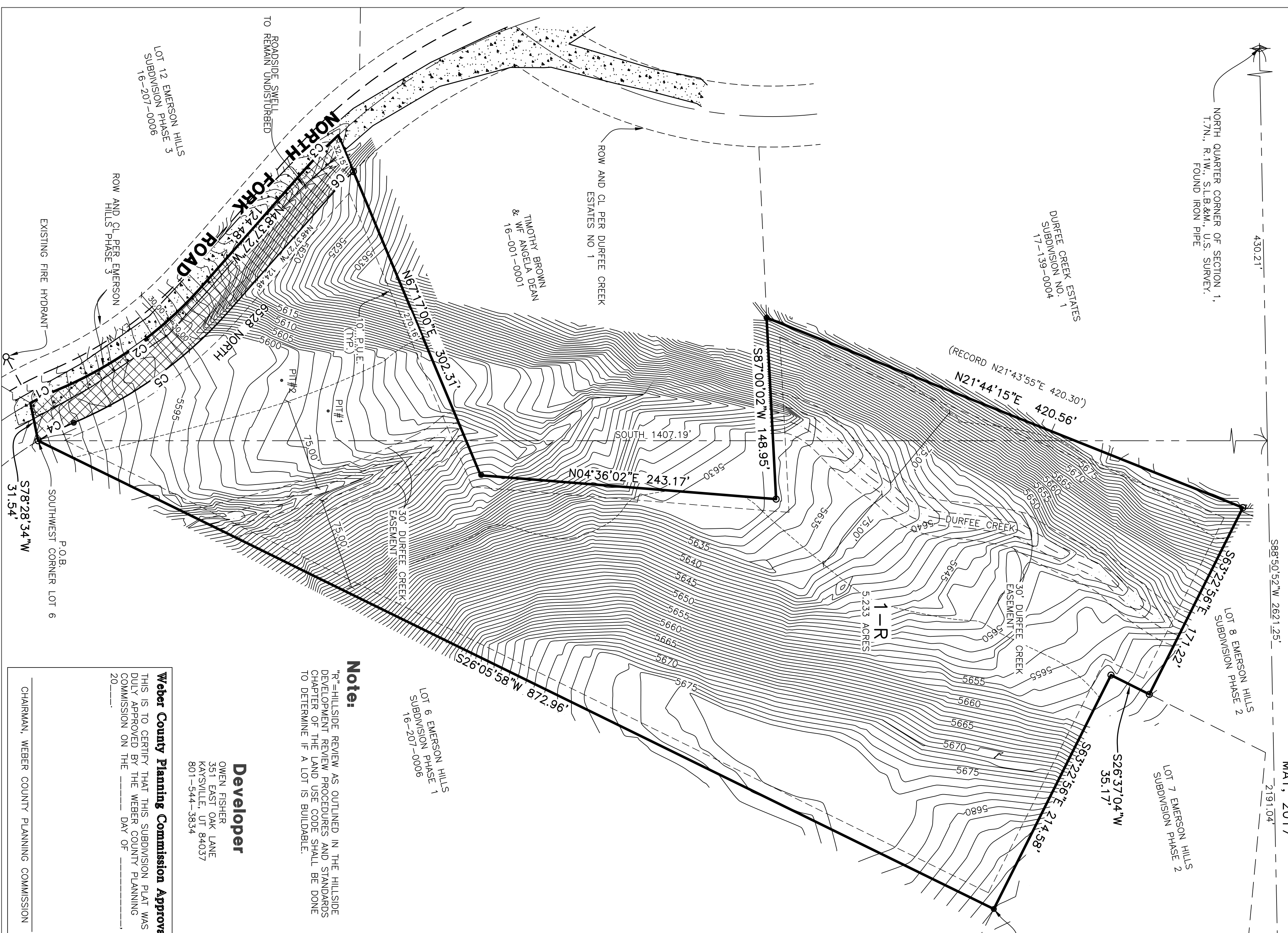


# Emerson Landing Subdivision

PART OF THE NORTHEAST QUARTER OF SECTION 1, T.7N., R.1W., S.L.B.&M., U.S. SURVEY  
WEBER COUNTY, UTAH  
MAY, 2017



588°50'52\"/>

NORTHEAST CORNER OF SECTION 1, T.7N., R.1W., S.L.B.&M., U.S. SURVEY, FOUND WEBER COUNTY BRASS CAP MONUMENT DATED 1966

EAST QUARTER CORNER OF SECTION 1, T.7N., R.1W., S.L.B.&M., U.S. SURVEY, FOUND REBAR

NORTHWEST CORNER OF SECTION 1, T.7N., R.1W., S.L.B.&M., U.S. SURVEY, FOUND REBAR

500°24'43\"/>

587°00'02\"/>

583°22'56\"/>

526°37'04\"/>

526°05'58\"/>

578°28'34\"/>

51°34'

587°00'02\"/>

587°00'02\"/>

587°00'02\"/>

587°00'02\"/>

587°00'02\"/>

587°00'02\"/>

587°00'02\"/>

587°00'02\"/>

587°00'02\"/>

587°00'02\"/>

587°00'02\"/>

587°00'02\"/>

587°00'02\"/>

587°00'02\"/>

587°00'02\"/>

587°00'02\"/>

587°00'02\"/>

587°00'02\"/>

587°00'02\"/>

587°00'02\"/>

587°00'02\"/>

587°00'02\"/>

587°00'02\"/>

587°00'02\"/>

587°00'02\"/>

587°00'02\"/>

587°00'02\"/>

587°00'02\"/>

587°00'02\"/>

587°00'02\"/>

587°00'02\"/>

587°00'02\"/>

587°00'02\"/>

587°00'02\"/>

587°00'02\"/>

587°00'02\"/>

587°00'02\"/>

587°00'02\"/>

587°00'02\"/>

587°00'02\"/>

587°00'02\"/>

587°00'02\"/>

587°00'02\"/>

587°00'02\"/>

587°00'02\"/>

587°00'02\"/>

587°00'02\"/>

587°00'02\"/>

587°00'02\"/>

587°00'02\"/>

587°00'02\"/>

587°00'02\"/>

587°00'02\"/>

587°00'02\"/>

587°00'02\"/>

587°00'02\"/>

587°00'02\"/>

587°00'02\"/>

587°00'02\"/>

587°00'02\"/>

587°00'02\"/>

587°00'02\"/>

587°00'02\"/>

587°00'02\"/>

587°00'02\"/>

587°00'02\"/>

587°00'02\"/>

587°00'02\"/>

587°00'02\"/>

587°00'02\"/>

587°00'02\"/>

587°00'02\"/>

587°00'02\"/>

587°00'02\"/>

587°00'02\"/>

587°00'02\"/>

587°00'02\"/>

587°00'02\"/>

587°00'02\"/>

587°00'02\"/>

587°00'02\"/>

587°00'02\"/>

587°00'02\"/>

587°00'02\"/>

587°00'02\"/>

587°00'02\"/>

587°00'02\"/>

587°00'02\"/>

587°00'02\"/>

587°00'02\"/>

587°00'02\"/>

587°00'02\"/>

587°00'02\"/>

587°00'02\"/>

587°00'02\"/>

587°00'02\"/>

587°00'02\"/>

587°00'02\"/>

587°00'02\"/>

587°00'02\"/>

587°00'02\"/>

587°00'02\"/>

587°00'02\"/>

587°00'02\"/>

587°00'02\"/>

587°00'02\"/>

587°00'02\"/>

587°00'02\"/>

587°00'02\"/>

587°00'02\"/>

587°00'02\"/>

587°00'02\"/>

587°00'02\"/>

587°00'02\"/>

587°00'02\"/>

587°00'02\"/>

587°00'02\"/>

587°00'02\"/>

587°00'02\"/>

587°00'02\"/>

587°00'02\"/>

587°00'02\"/>

587°00'02\"/>

587°00'02\"/>

587°00'02\"/>

587°00'02\"/>

587°00'02\"/>

587°00'02\"/>

587°00'02\"/>

587°00'02\"/>

587°00'02\"/>

587°00'02\"/>

587°00'02\"/>

587°00'02\"/>

587°00'02\"/>

587°00'02\"/>

587°00'02\"/>

587°00'02\"/>

587°00'02\"/>

587°00'02\"/>

587°00'02\"/>

587°00'02\"/>

587°00'02\"/>

587°00'02\"/>

587°00'02\"/>

587°00'02\"/>

587°00'02\"/>

587°00'02\"/>

587°00'02\"/>

587°00'02\"/>

587°00'02\"/>

587°00'02\"/>

587°00'02\"/>

587°00'02\"/>

587°00'02\"/>

587°00'02\"/>

587°00'02\"/>

587°00'02\"/>

587°00'02\"/>

587°00'02\"/>

587°00'02\"/>

587°00'02\"/>

587°00'02\"/>

587°00'02\"/>

587°00'02\"/>

587°00'02\"/>

587°00'02\"/>

587°00'02\"/>

587°00'02\"/>

587°00'02\"/>

587°00'02\"/>

587°00'02\"/>

587°00'02\"/>

587°00'02\"/>

587°00'02\"/>

587°00'02\"/>

587°00'02\"/>

587°00'02\"/>

587°00'02\"/>

587°00'02\"/>

587°00'02\"/>

587°00'02\"/>

587°00'02\"/>

587°00'02\"/>

587°00'02\"/>

587°00'02\"/>

587°00'02\"/>

587°00'02\"/>

587°00'02\"/>

587°00'02\"/>

587°00'02\"/>

587°00'02\"/>

587°00'02\"/>

587°00'02\"/>

587°00'02\"/>

587°00'02\"/>

587°00'02\"/>

587°00'02\"/>

587°00'02\"/>

587°00'02\"/>

587°00'02\"/>

587°00'02\"/>

587°00'02\"/>

587°00'02\"/>

587°00'02\"/>

587°00'02\"/>

587°00'02\"/>

587°00'02\"/>

587°00'02\"/>

587°00'02\"/>

587°00'02\"/>

587°00'02\"/>

587°00'02\"/>

587°00'02\"/>

587°00'02\"/>

587°00'02\"/>

587°00'02\"/>

587°00'02\"/>

587°00'02\"/>

587°00'02\"/>

587°00'02\"/>

587°00'02\"/>

587°00'02\"/>