

Mound System

Daily Wastewater Flow 7
 No. of Bedrooms 1
 Daily Wastewater Flow (DWF) 1050 gpd
 Septic Tank Size 2000 gal
 Pump Tank Size 2000 gal
 Percolation Rate 21 mpi
 Effluent Loading Rate (ELR) 0.30 gpd/sqft

Absorption Area
 a. Bed width (A) 6 ft
 b. Bed Length (B) 175 ft
 c. Bed depth (F) 0.83 ft

Entire Fill
 Depth at upslope edge of bed (D) 1.00 ft
 Depth at downslope edge of bed (E) 2.32 ft
 Depth at bed center (H) 1.00 ft
 Depth at bed edges (G) 0.50 ft

Fill Length
 Horizontal gradient of sideslope (GR) 3:1 3 ft/ft
 Endslope width (K) 10.5 ft
 Fill Length (L) 196 ft

Fill Width
 b. Upslope Width (J) 4.2 ft
 c. Downslope Width (I) 32.2 ft
 d. Fill Width (W) 42.4 ft

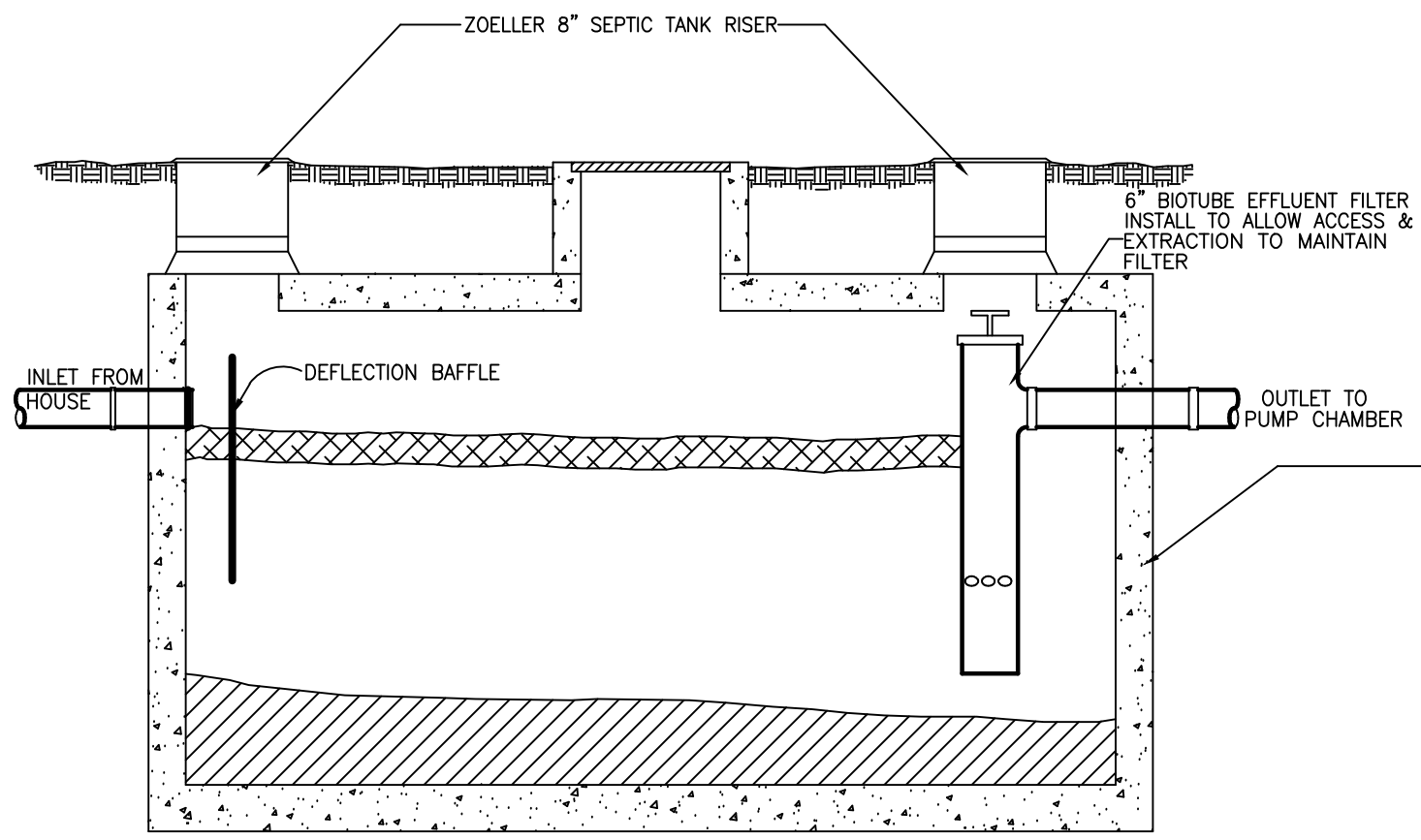
Sloped Site (L x W) 5287.00 sqft

Distribution Network
 Manifold Placement Center Type
 No. of Laterals 4
 Length of Lateral Line 75 ft
 Perforation Size 1/4 in
 Perforation Spacing 3 ft
 Lateral Diameter (Fig. A-1 thru A-4) 2 in
 Number of perforations per lateral 25 per/lat
 Manifold Size (Table A-2) 2 in
 Lateral Spacing 5 ft
 Supply Line Length 37 ft
 Squirt Height 3.54 ft

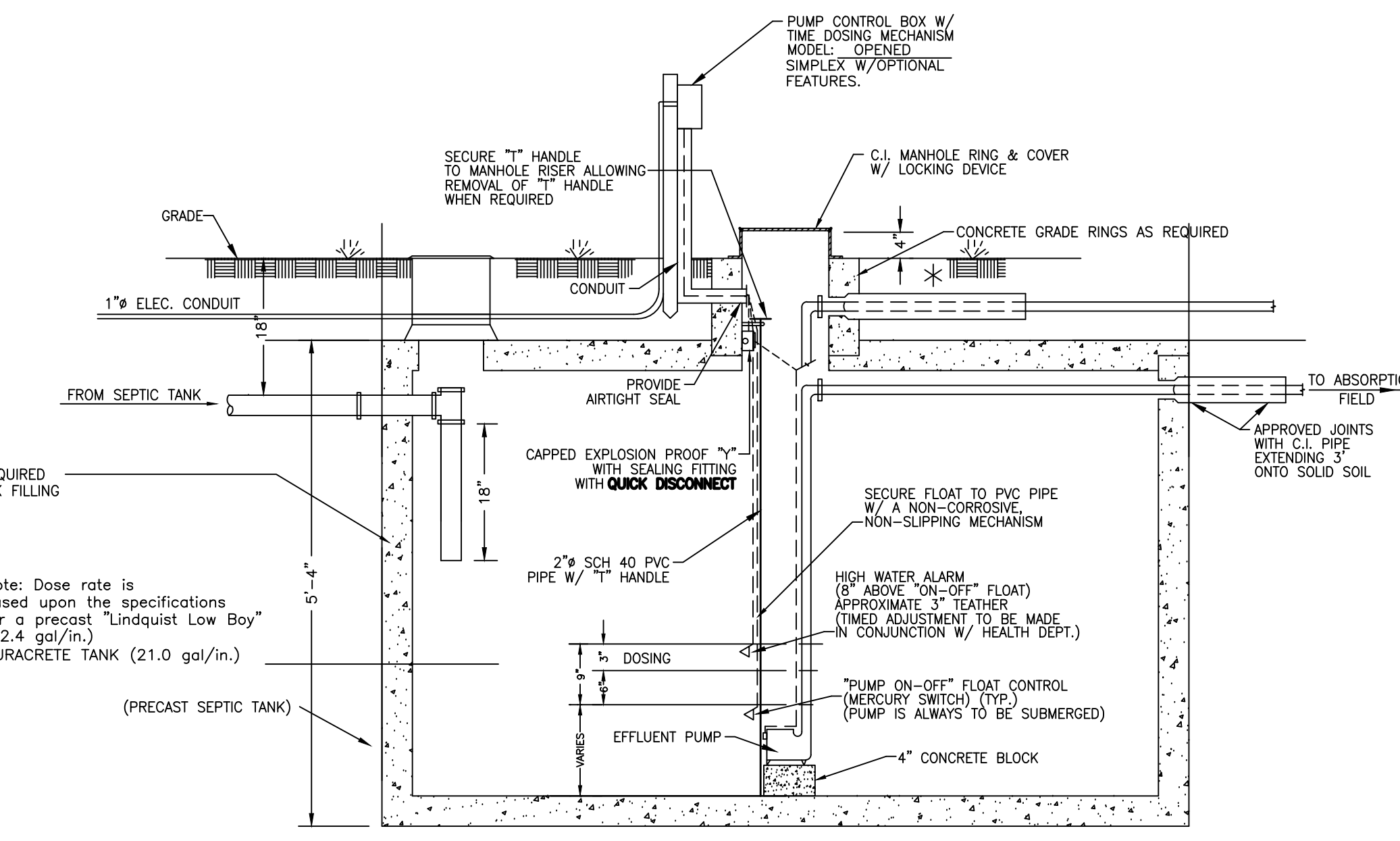
Force Main
 Main Force Diameter 2 in
 Total Dynamic Head 20.84 ft

Dose Volume Determination
 Lateral Pipe Volume (LPV) 48.63 gal
 Dose Volume (8 x LPV) 389 gal

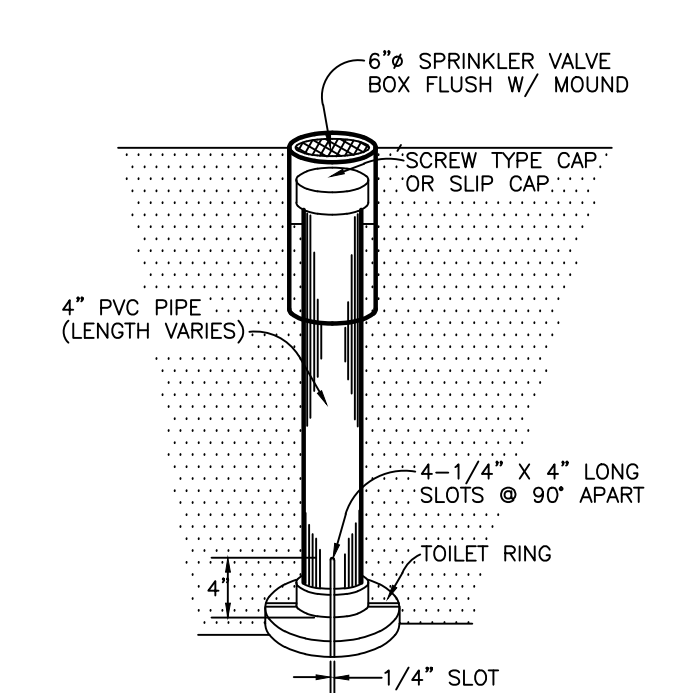
Pipe Sizing/Qualifications
 Use a FLYGT NP 3085 MT 1~461 Model or equivalent based upon the following design requirements:
 Total Dynamic Head 20.84 ft
 Flow Rate 77 gpm



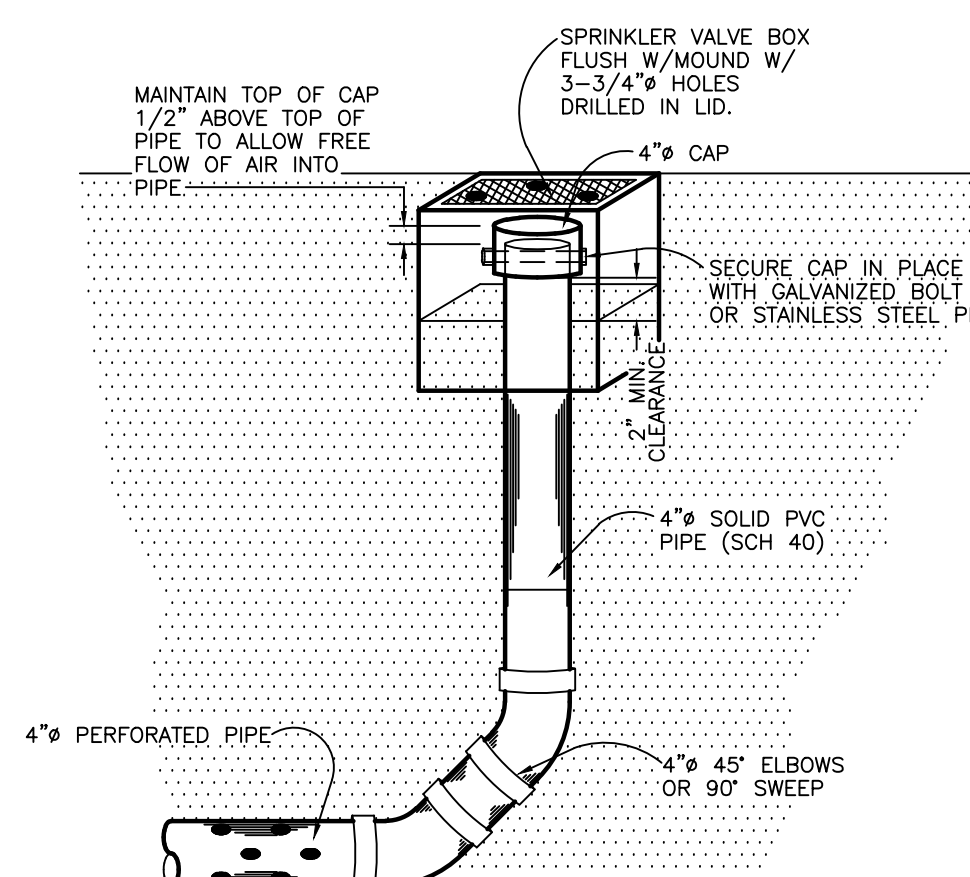
Septic Tank Detail
SCALE: NONE



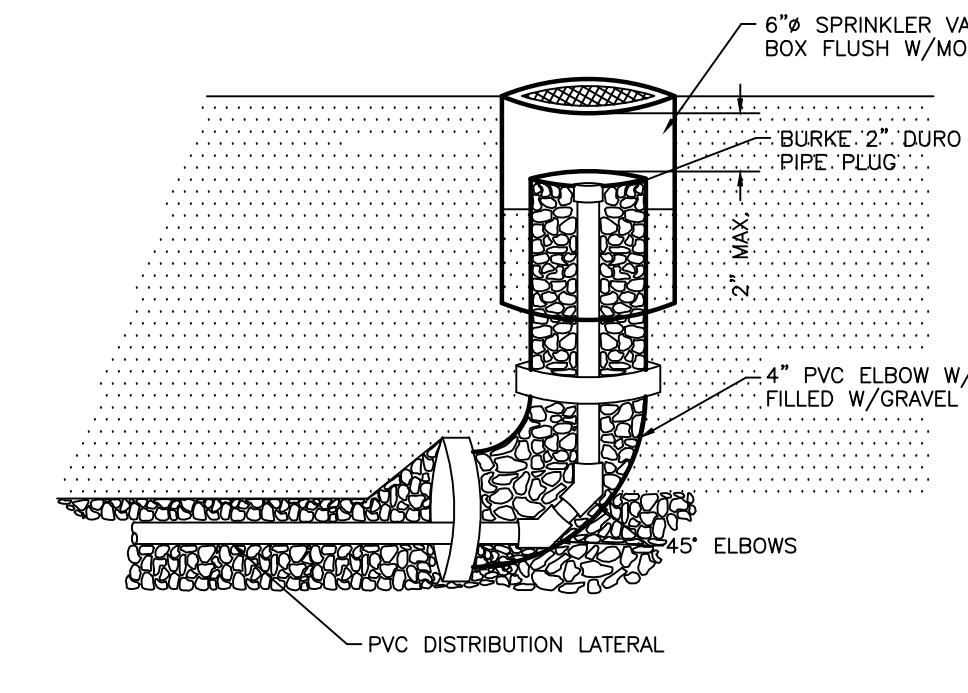
Pump Chamber
SCALE: NONE



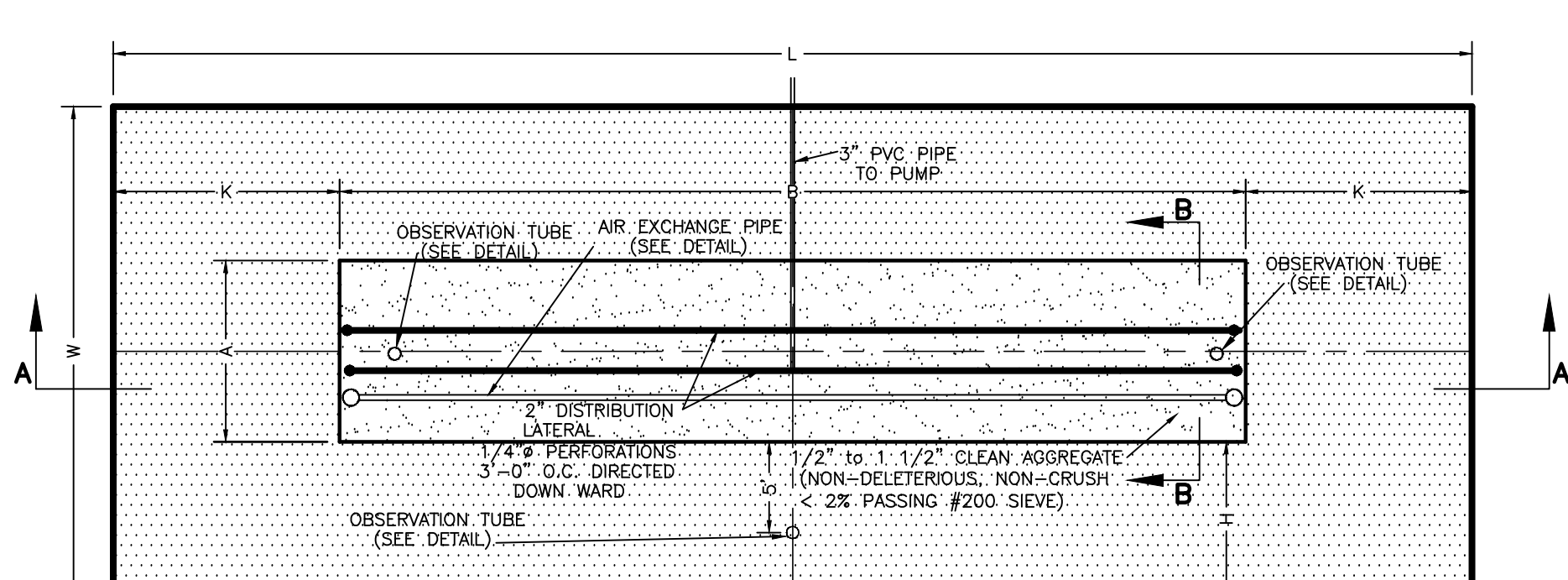
Observation Tube Detail
SCALE: NONE



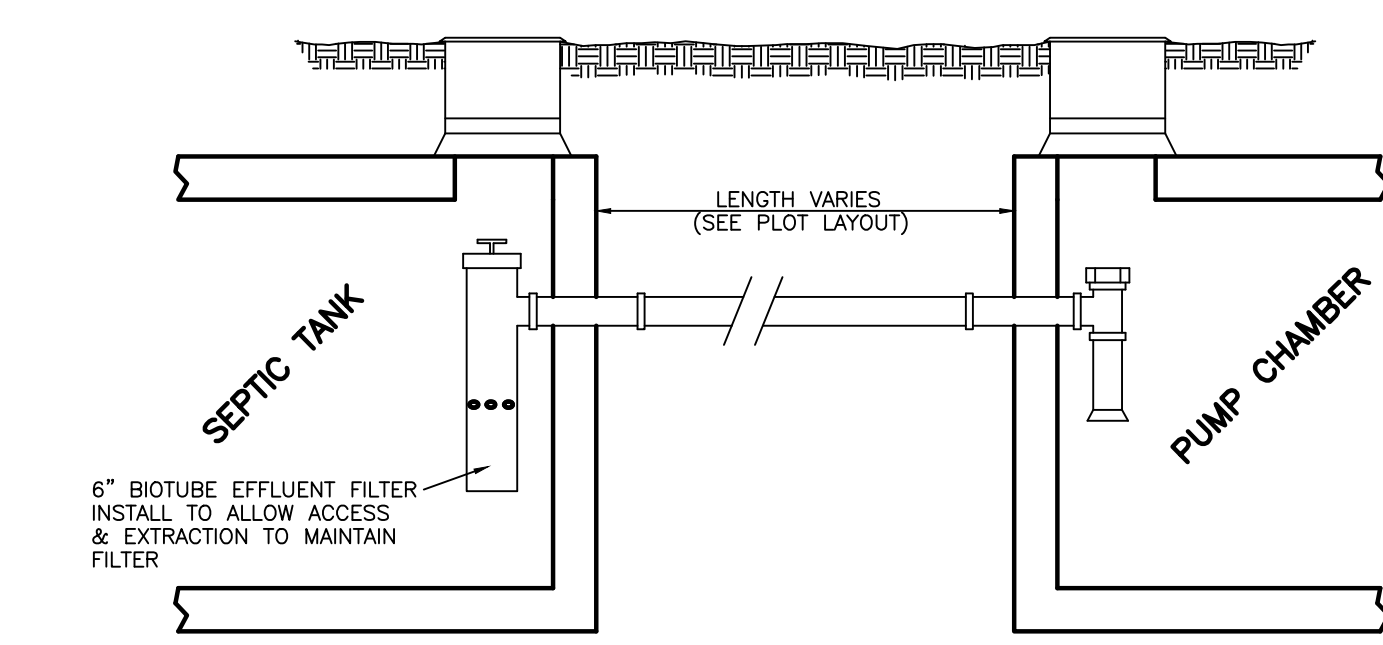
Air Exchange Pipe Detail
SCALE: NONE



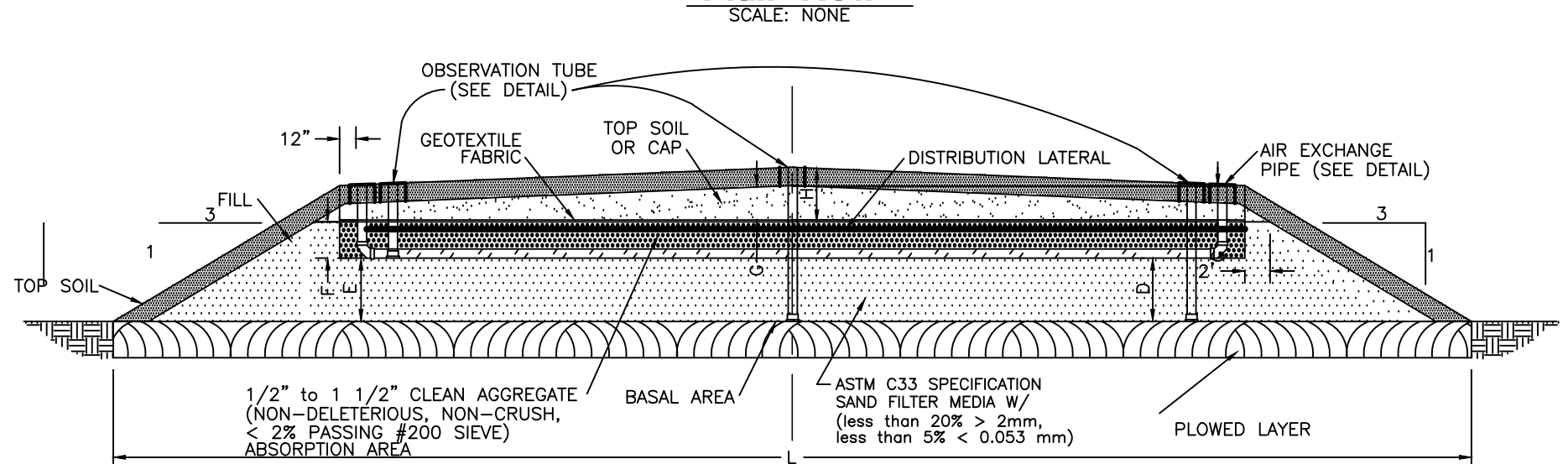
Distribution Lateral 'Turn-up'
SCALE: NONE



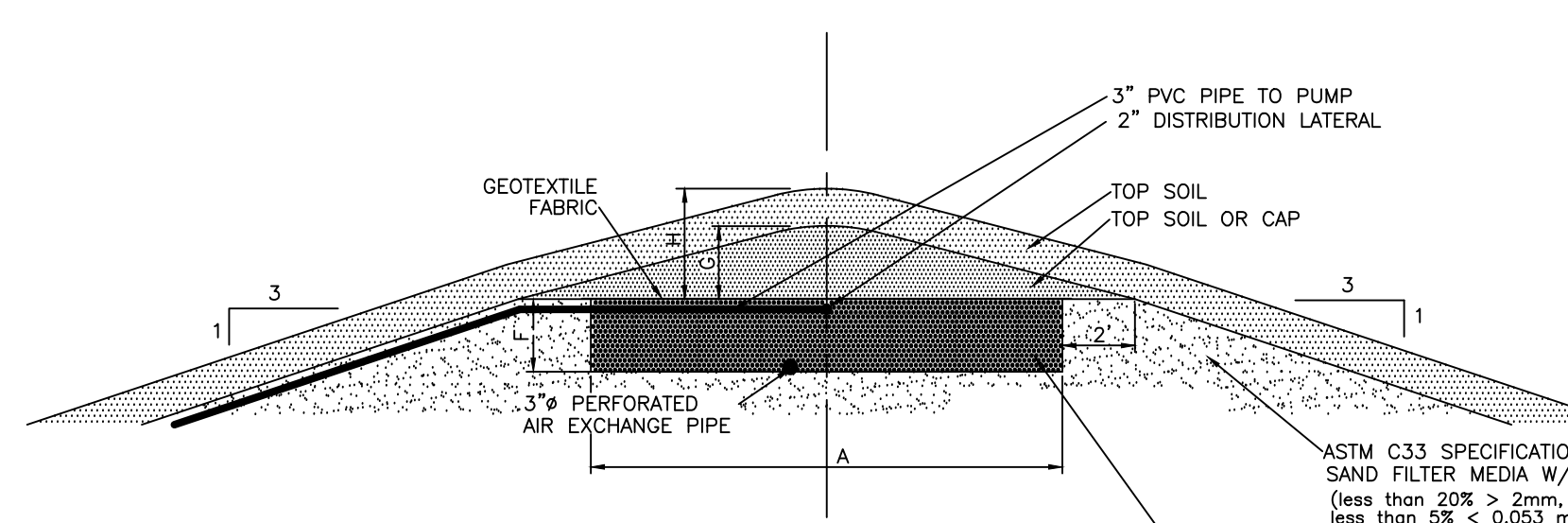
Plan View
SCALE: NONE



Septic Tank Discharge Detail
SCALE: NONE



Section A-A
SCALE: NONE



Section B-B
SCALE: NONE

Proprietary Notice
 This document contains information proprietary to Reeve and Associates, Inc. It may not be disclosed to others for any purpose or used for installation purposes without the written permission of Reeve and Associates, Inc.

NOTE: GRANULAR SAND TO BE COMPACTED BY APPLYING SPRINKLED WATER FOR A 24 HOUR TIME PERIOD.

3/6/2017 J:\meyerers\G:\6838 Thomas Quinn\01 - 5935 Old Snow Basin Rd., Huntsville\Improvements\Old Snow Basin Road Home Imp.dwg Reeve & Associates, Inc. - Solutions You Can Build On

Reeve & Associates, Inc.
 5160 SOUTH 1500 WEST RIVERDALE, UTAH 84405
 TEL: (801) 621-2100 FAX: (801) 621-2666 WWW: REEVE-ASSOC.COM
 LAND PLANNERS • CIVIL ENGINEERS • LAND SURVEYORS
 TRAFFIC ENGINEERS • STRUCTURAL ENGINEERS • LANDSCAPE ARCHITECTS

REVISIONS	DESCRIPTION

DATE

5935 Old Snow Basin Road
 HUNTSVILLE, WEBER COUNTY, UTAH
Mound Treatment System

REGISTERED PROFESSIONAL ENGINEER
 375328
 J. NATE REEVE
 STATE OF UTAH

Project Info.
 Engineer: NATE REEVE
 Drafter: TYLER PRIDEMORE
 Begin Date: MARCH 2017
 Name: 5935 OLD SNOW BASIN ROAD MOUND SYSTEM
 Number: 6838-01

Sheet	2
2	Sheets