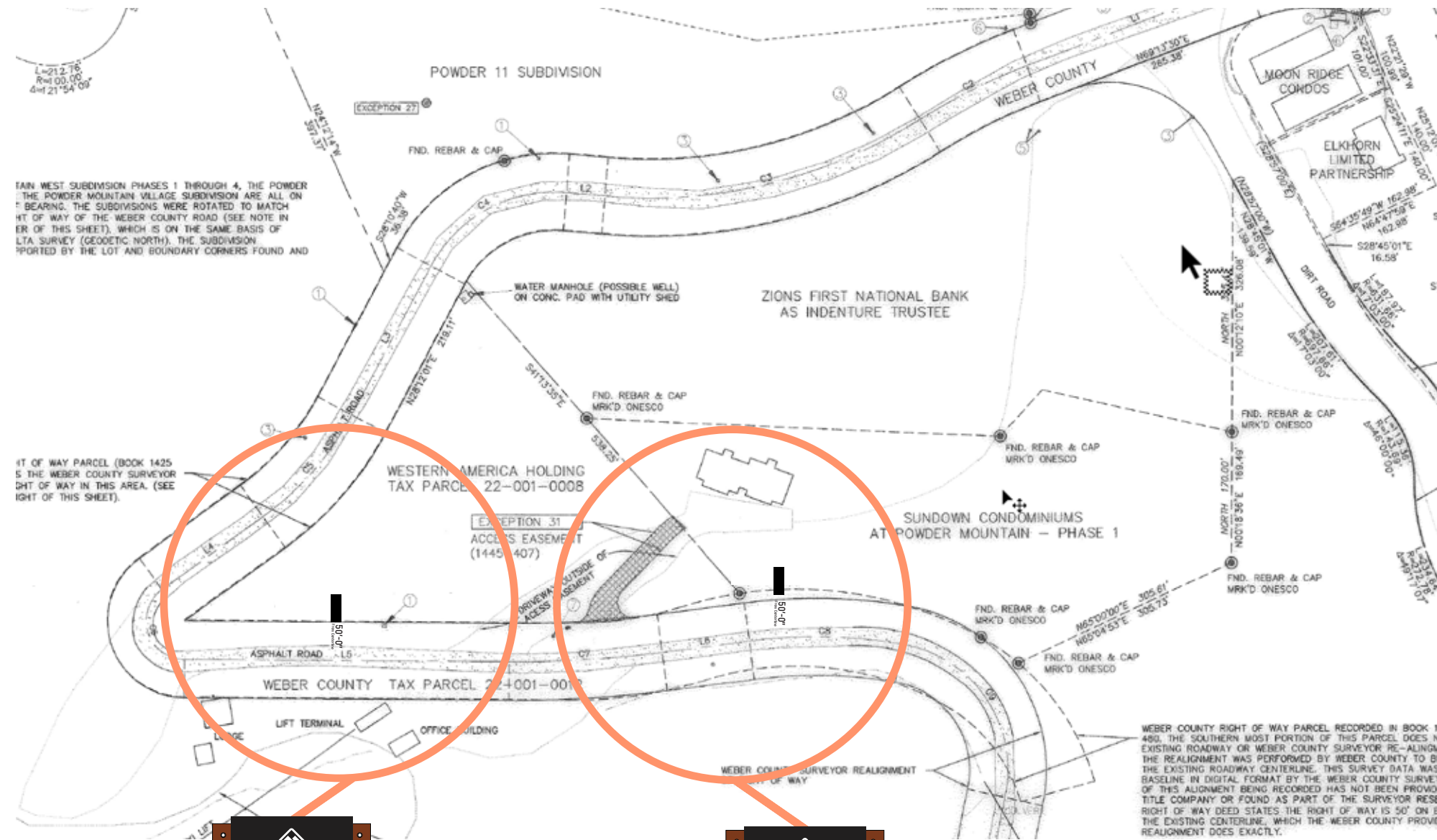




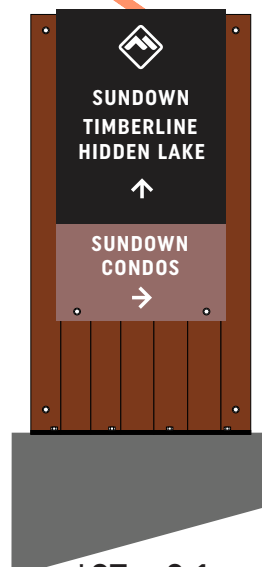
ST ~ 2.3 / PLOT VIEW / 12'-0" SETBACK FROM ASPHALT ON ST ROUTE 158 & 12'-0" SETBACK FROM ASPHALT ON SUMMIT PASS.

ST ~ 2.3 / ELEVATION VIEW / 12'-0" SETBACK FROM ASPHALT OFF ST ROUTE 158 & SUMMIT PASS





ST ~ 2.2



\*ST ~ 2.1

**\*NOTE:**

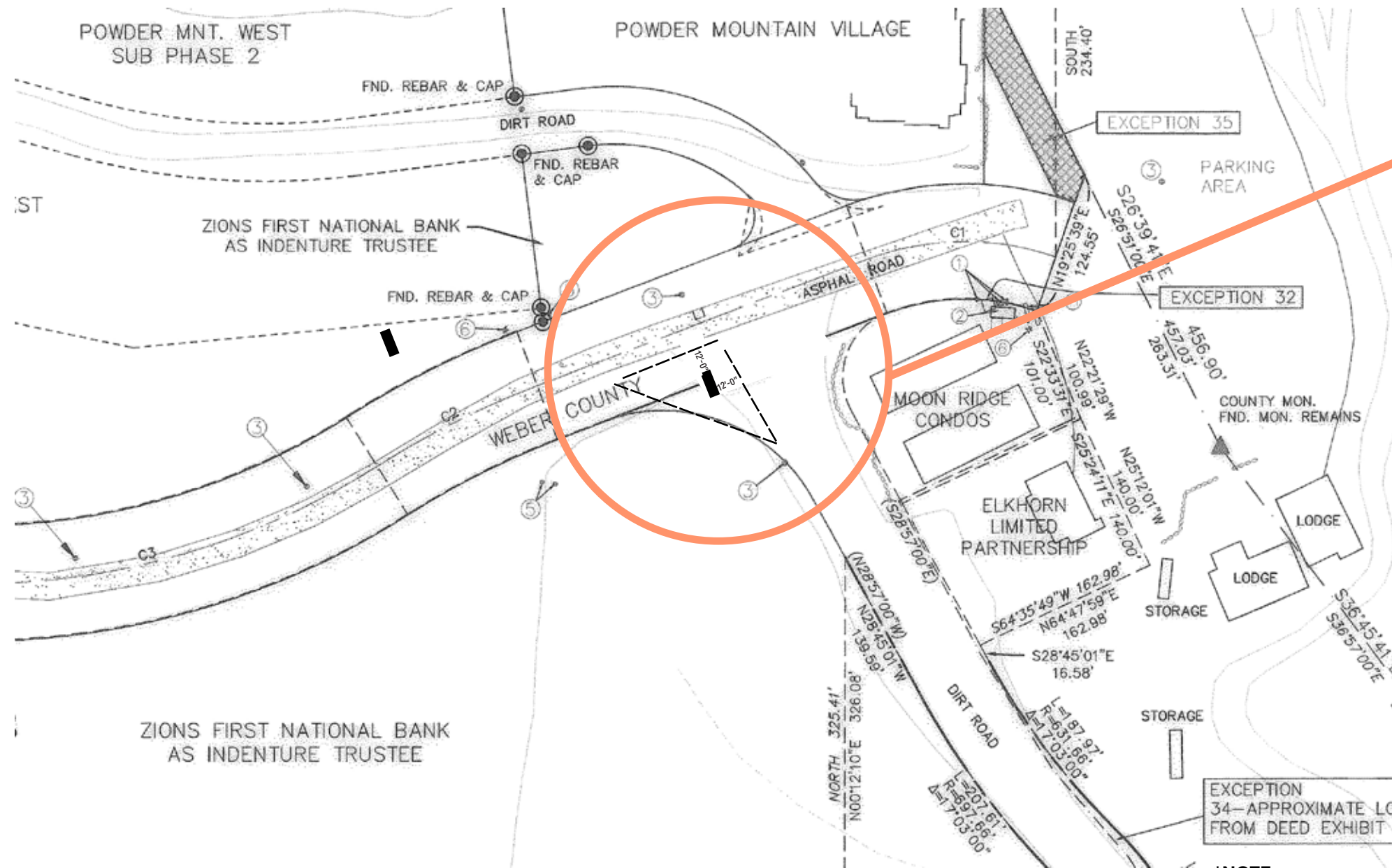
We are requesting that our MSP plans have standards of the sign code modified per LUC§110-2-5(c)(3) which states: "

(3) Sign plan. Within any Ogden Valley recreation and resort zone, at elevations of at least 6,200 feet above sea level, where a master plan has been approved by the planning commission, the planning commission may modify any provision of this chapter by approving a sign plan created by the developer (as defined in the applicable zoning development agreement) if the planning commission determines that the plan is consistent with the approved master plan."

DRAWN BY:  
LA

DATE:  
2/14/17

VERSION:  
#1



\*ST ~ 2.3

**\*NOTE:**

We are requesting that our MSP plans have standards of the sign code modified per LUC§110-2-5(c)(3) which states: "

(3) Sign plan. Within any Ogden Valley recreation and resort zone, at elevations of at least 6,200 feet above sea level, where a master plan has been approved by the planning commission, the planning commission may modify any provision of this chapter by approving a sign plan created by the developer (as defined in the applicable zoning development agreement) if the planning commission determines that the plan is consistent with the approved master plan."

DRAWN BY:  
LA

DATE:  
2/14/17

VERSION:  
#1



ST ~ 2.1 / PLOT VIEW / 50'-0" SETBACK FROM CENTERLINE

ST ~ 2.1 / ELEVATION VIEW / 50'-0" SETBACK FROM CENTERLINE

