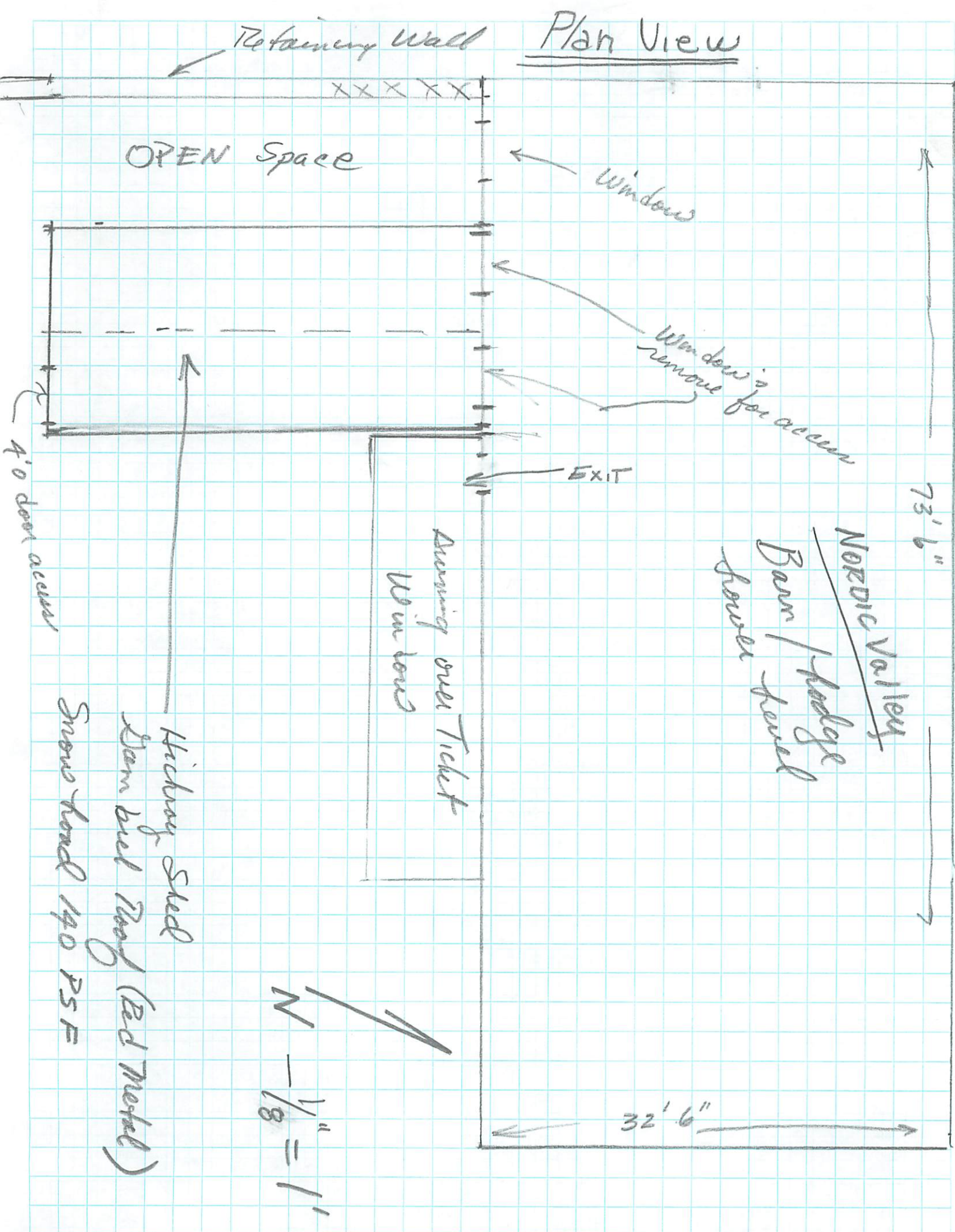


Plan View



Retaining Wall

OPEN Space

Windows

Windows to remove for access

EXIT

73' 6"

NORDIC Valley
Barn / Lodge
Lower level

Dormer over Ticket
Windows

32' 6"

N
1/8" = 1'

4'0" door access

Hickory Street
Dormer over Roof (Red Metal)
Snow load 140 PSF

Nordic Valley

Local Companies That will be Assisting us

1) Solitude Builders - Carson Young

801-452-5020

a) Gen Contractor

2) J.C. Electric - ~~801~~-745-2210

a) Brent -

3) Puel Engineering

801-771-0542

a) Kyle