

PREPARED BY: DOMINION Engineering Associates, L.C. 5684 South Green Street Murray, Utah 84133 801-713-3000

OWNER: Phineas Partners, LLC 6164 South Old Orchard Lane Salt Lake City, UT 84121

OWNER: Phineas Partners, LLC 6164 South Old Orchard Lane Salt Lake City, UT 84121

WEBER COUNTY PLANNING COMMISSION This is to certify that this subdivision plat was duly approved by the Weber County Planning Commission. Signed this day of July 19, 2017.

WEBER-MORGAN HEALTH DEPARTMENT I hereby certify that the soil percolation rates on site wastewater disposal systems, signed this day of July 19, 2017.

WEBER COUNTY ENGINEER I have examined the required public improvement standards and drawings for this subdivision plat and in my opinion it conforms with the county Ordinance applicable hereto and now in force and effect. Signed this day of July 20, 2017.

WEBER COUNTY ATTORNEY I have examined the financial guarantees and other documents associated with this subdivision plat and in my opinion it conforms with the county Ordinance applicable hereto and now in force and effect. Signed this day of July 20, 2017.

WEBER COUNTY SURVEOR I hereby certify that the Weber County Surveyor's office has reviewed this plat has for mathematical correctness, section corner data and for harmony with files and monuments of record in county offices. The approval of this plat by the Weber County Surveyor does not relieve the licensed land surveyor who executed this plat of the responsibilities and/or liabilities associated therewith. Signed this day of June 29, 2017.

LEANN H KURTZ Weber County Recorder Fees \$ 63.00 Book 21 Page 91892 Date 13-SEP-2017 Time 1:47 PM Entry No. 2878397 MURKIN NEW TITLE State of Utah, County of Weber, recorded and filed at the request of WEBER COUNTY RECORDER

ACKNOWLEDGMENT: My Commission Expires 9/18/18, Commission Number 079412, State of Utah, County of Salt Lake, dated 29th day of June, 2017.

ACKNOWLEDGMENT: My Commission Expires 9/18/18, Commission Number 079412, State of Utah, County of Salt Lake, dated 29th day of June, 2017.

ACKNOWLEDGMENT: My Commission Expires 9/18/18, Commission Number 079412, State of Utah, County of Salt Lake, dated 29th day of June, 2017.

ACKNOWLEDGMENT: My Commission Expires 9/18/18, Commission Number 079412, State of Utah, County of Salt Lake, dated 29th day of June, 2017.

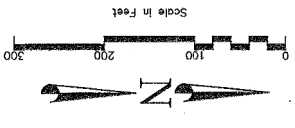
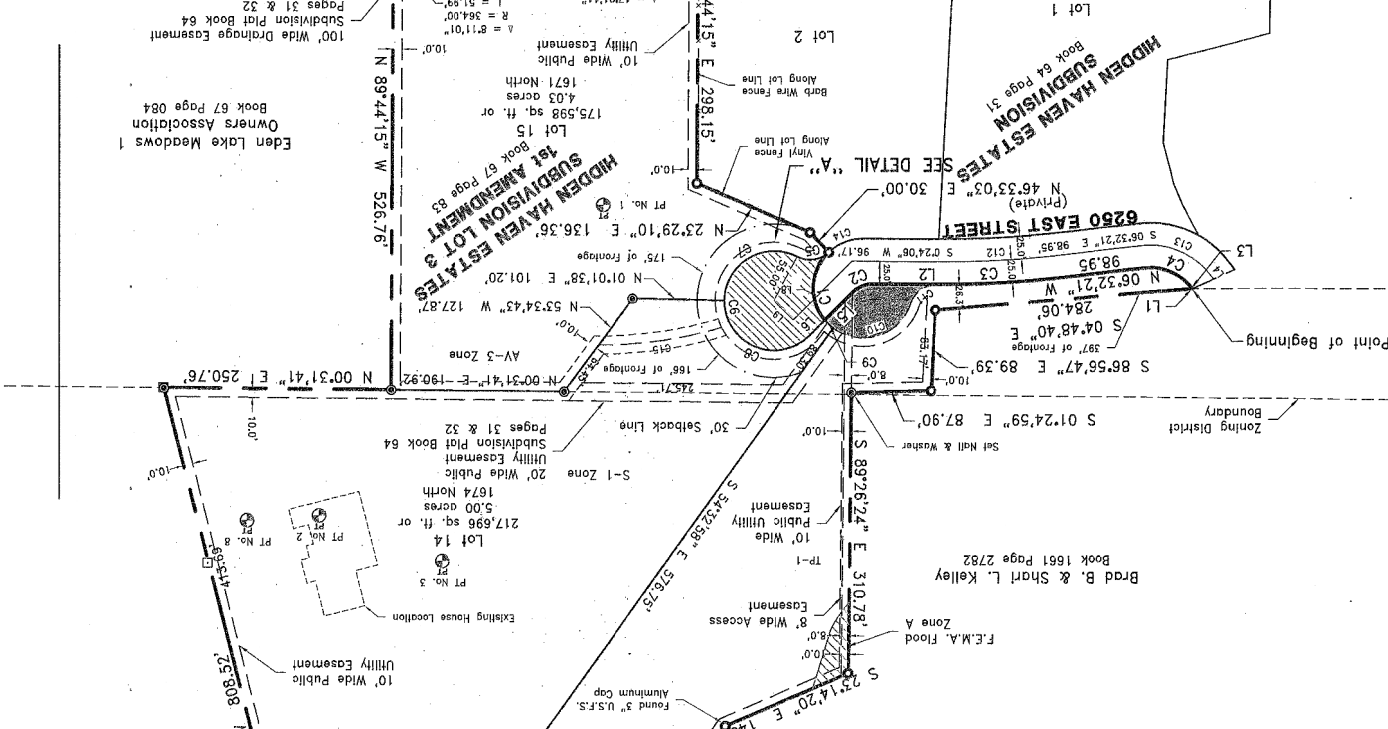
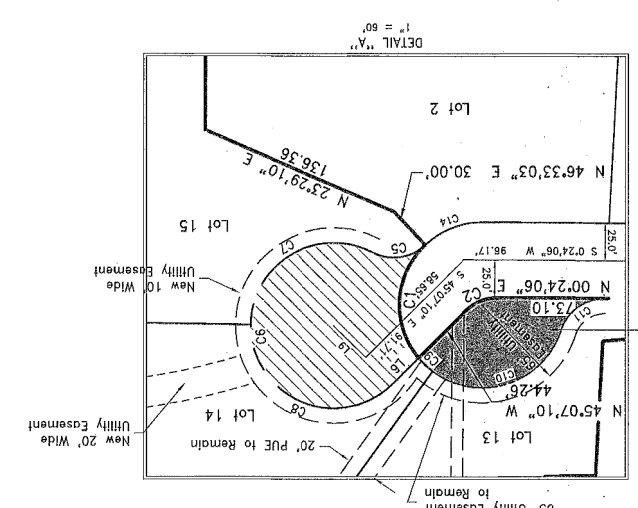
ACKNOWLEDGMENT: My Commission Expires 9/18/18, Commission Number 079412, State of Utah, County of Salt Lake, dated 29th day of June, 2017.

ACKNOWLEDGMENT: My Commission Expires 9/18/18, Commission Number 079412, State of Utah, County of Salt Lake, dated 29th day of June, 2017.

ACKNOWLEDGMENT: My Commission Expires 9/18/18, Commission Number 079412, State of Utah, County of Salt Lake, dated 29th day of June, 2017.

ACKNOWLEDGMENT: My Commission Expires 9/18/18, Commission Number 079412, State of Utah, County of Salt Lake, dated 29th day of June, 2017.

ACKNOWLEDGMENT: My Commission Expires 9/18/18, Commission Number 079412, State of Utah, County of Salt Lake, dated 29th day of June, 2017.



LEGEND: Symbols for Section Corner Monument, Right-of-Way Line, Monument Line, Easement Line, Sublot Line, Area of 6250 East Street to be vacated, etc.

LINE TABLE with columns: LINE, BEARING, LENGTH, CHORD, TANGENT, DELTA, BEARING, RADIUS, CURVE

CURVE TABLE with columns: CURVE, RADIUS, LENGTH, DELTA, BEARING, CHORD, TANGENT

Table for Lot 13: INITIAL, BEGINNING, ENDING, F.M.A. DEPTH, TIME TO WATER, DROPPED (IN), DEPTH (IN), PERCOLATION

Table for Lot 14: INITIAL, BEGINNING, ENDING, F.M.A. DEPTH, TIME TO WATER, DROPPED (IN), DEPTH (IN), PERCOLATION

Table for Lot 15: INITIAL, BEGINNING, ENDING, F.M.A. DEPTH, TIME TO WATER, DROPPED (IN), DEPTH (IN), PERCOLATION

HIDDEN HAVEN ESTATES SUBDIVISION 2nd AMENDMENT and Lot 12, Hidden Haven Estates Subdivision Lot 3 1st Amendment. A part of the Northwest Quarter of Section 1 and the Northeast Quarter of Section 2, Township 6 North, Range 1 East, Salt Lake Base and Meridian, Weber County, Utah.

BOUNDARY DESCRIPTION: A parcel of land located in the Northwest Quarter of Section 1 and the Northeast Quarter of Section 2, Township 6 North, Range 1 East, Salt Lake Base and Meridian, Weber County, Utah, described as follows: BEGINNING at a point North 89°09'29" West 150.49 feet along the north line of Section 2, Township 6 North, Range 1 East, Salt Lake Base and Meridian and Section 2, and the Northeast Quarter of Section 2, and the Northeast Quarter of Section 1, and the Northeast Quarter of Section 2, Township 6 North, Range 1 East, Salt Lake Base and Meridian, Weber County, Utah, described as follows: