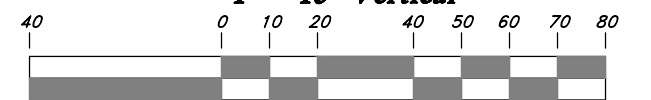


1" = 40' Horiz.
1" = 10' Vertical



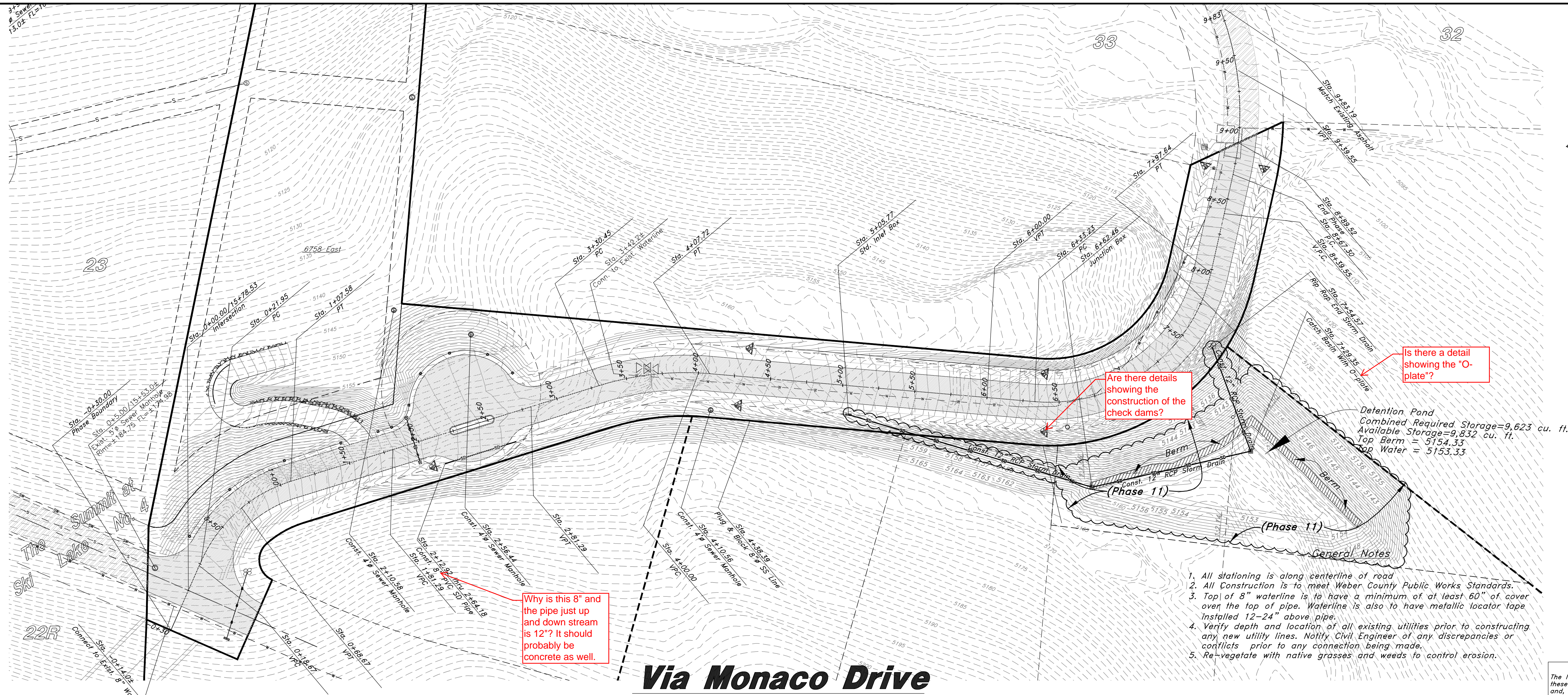
Graphic Scale

Legend

(Note: All items may not appear on drawing)

San. Sewer Manhole	⊙
Storm Drain Manhole	⊙
Catch Basins	⊙
Exist. Fire Hydrant	⊙
Exist. Water Valve	⊙
Water Valve	⊙
Sanitary Sewer	—S—
Culinary Water	—C—
Irrigation Line	—I—
Storm Drain	—SD—
Telephone Line	—T—
Secondary Waterline	—SW—
Power Line	—P—
Fire Line	—F—
Land Drain	—LD—
Power pole w/guy	⊙
Light Pole	⊙
Fence	—x—x—
Flowline of ditch	—d—
Overhead Power line	—OP—
Corrugated Metal Pipe	—CMP—
Concrete Pipe	—CP—
Ductile iron	—DI—
Polyvinyl Chloride	—PVC—
Top of Asphalt	—TA—
Edge of Asphalt	—EA—
Centerline	—CL—
Flowline	—FL—
Top of Curb	—TC—
Finish Floor	—FF—
Finish Grade	—FG—
Top of Wall	—TW—
Top of Walk	—TW—
Top of Concrete	—TCN—
Finish Contour	—FC—
Exist. Contour	—90—
Finish Grade	—95.33TA—
Exist. Grade	—95.33TA—
Ridge Line	—R—
Direction of Flow	—>—
Monument	⊙
Section Corner	⊙
Rebar & Cap	⊙
Existing Asphalt	▨
New Asphalt	▨

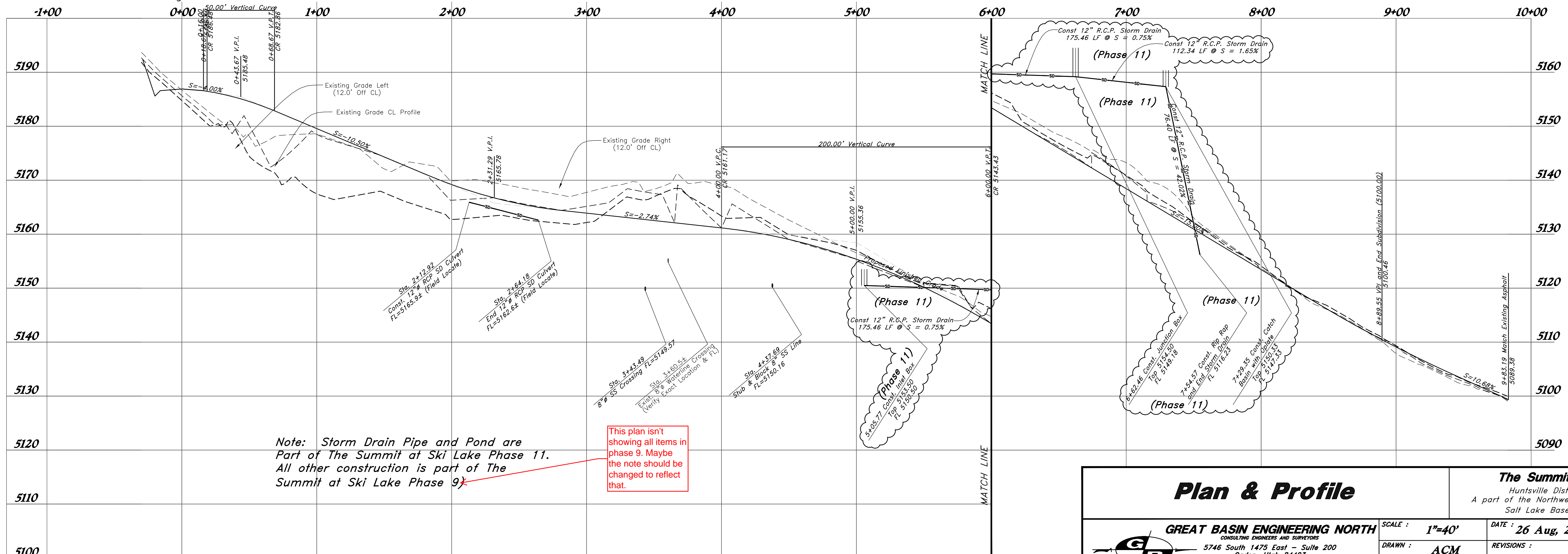
CAUTION
The location and/or elevation of existing utilities as shown on these plans is based on records of the various utility companies and, where possible, measurement taken from the field. The information is not to be relied on as being exact or complete.



1. All stationing is along centerline of road
2. All Construction is to meet Weber County Public Works Standards.
3. Top of 8" waterline is to have a minimum of at least 60" of cover over the top of pipe. Waterline is also to have metallic locator tape installed 12-24" above pipe.
4. Verify depth and location of all existing utilities prior to constructing any new utility lines. Notify Civil Engineer of any discrepancies or conflicts prior to any connection being made.
5. Re-vegetate with native grasses and weeds to control erosion.

Via Monaco Drive

60' wide Private Drive



Note: Storm Drain Pipe and Pond are Part of The Summit at Ski Lake Phase 11. All other construction is part of The Summit at Ski Lake Phase 9.

This plan isn't showing all items in phase 9. Maybe the note should be changed to reflect that.

Plan & Profile

The Summit @ Ski Lake No. 11

Huntsville District, Weber County, Utah
A part of the Northwest 1/4 of Section 24, T6N, R1E,
Salt Lake Base & Meridian, U.S. Survey

GREAT BASIN ENGINEERING NORTH
CONSULTING ENGINEERS AND SURVEYORS
5746 South 1475 East - Suite 200
Ogden, Utah 84403
P.O. Box 150040, Ogden, Utah 84415
Ogden (801)294-4515 Salt Lake City (801)521-0222 Fax (801)292-7544

SCALE: 1"=40'
DRAWN: ACM
96N120V9S3

DATE: 26 Aug, 2010
REVISIONS:

DRWG. NO.
Hor.
of X