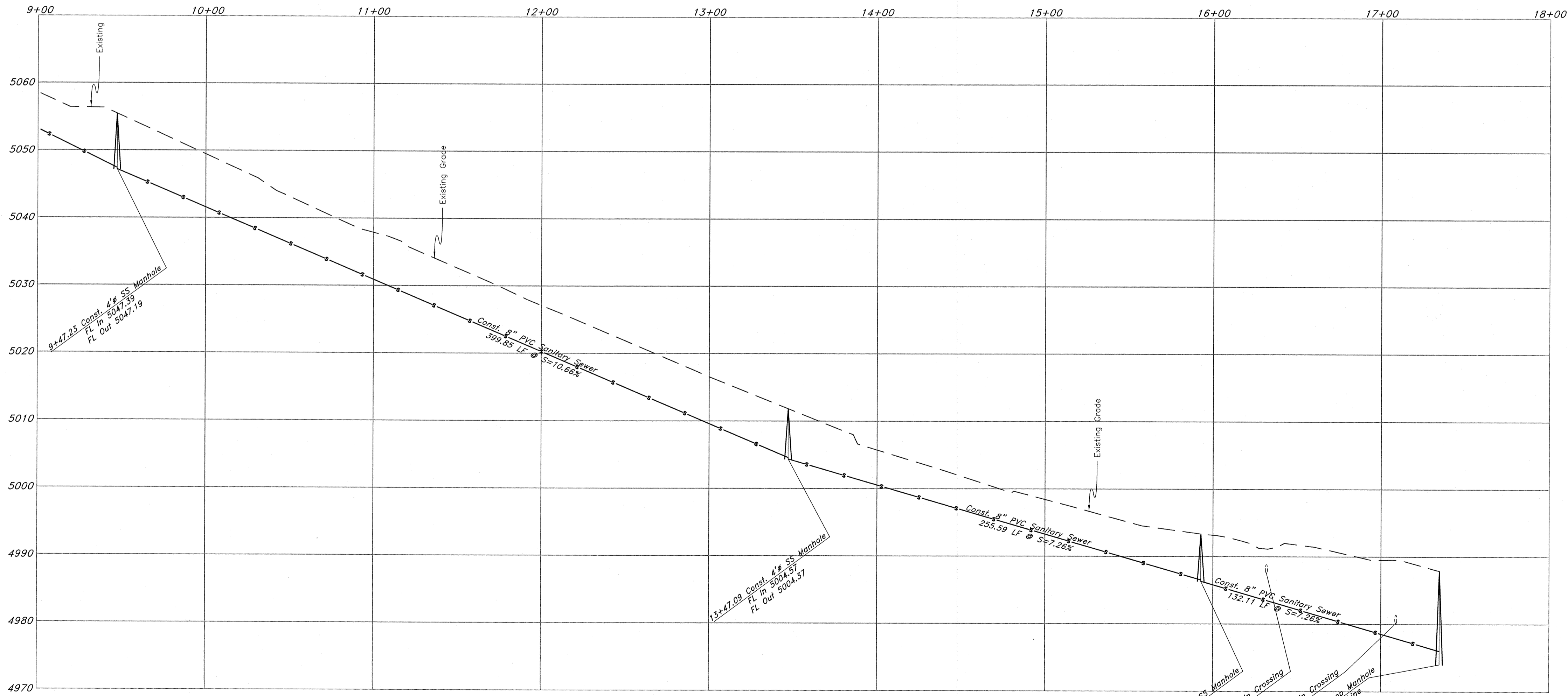
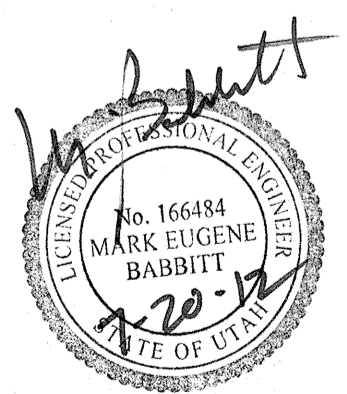


**Sewer Outfall**



**Legend**

- (Note: All items may not appear on drawing)
- San. Sewer Manhole
  - Water Manhole
  - Storm Drain Manhole
  - Electrical Manhole
  - Catch Basins
  - Exist. Fire Hydrant
  - Fire Hydrant
  - Exist. Water Valve
  - Water Valve
  - Sanitary Sewer
  - Culinary Water
  - Gas Line
  - Irrigation Line
  - Storm Drain
  - Telephone Line
  - Secondary Waterline
  - Power Line
  - Fire Line
  - Land Drain
  - Power pole
  - Power pole w/guy
  - Light Pole
  - Fence
  - Flowline of ditch
  - Overhead Power line
  - Corrugated Metal Pipe
  - Concrete Pipe
  - Reinforced Concrete Pipe
  - Ductile Iron
  - Polyvinyl Chloride
  - Top of Asphalt
  - Edge of Asphalt
  - Centerline
  - Flowline
  - Finish Floor
  - Top of Curb
  - Top of Wall
  - Top of Concrete
  - Natural Ground
  - Finish Contour
  - Exist. Contour
  - Finish Grade
  - Exist. Grade
  - Ridge Line
  - Direction of Flow
  - Existing Asphalt
  - New Asphalt
  - Heavy Duty Asphalt
  - Concrete
  - Open Face
  - Curb & Gutter



<b>Plan and Profile</b>		<b>The Chalets at Ski Lake Phase 5 - Sewer Outfall</b>	
A part of the Southwest 1/4 of Section 13, a part of the Northeast 1/4 of Section 23, and a part of the Northwest 1/4 of Section 24, T6N, R1E, SLB&M, U.S. Survey			
<p><b>GREAT BASIN ENGINEERING NORTH</b> CONSULTING ENGINEERS AND SURVEYORS 5746 South 1475 East - Suite 200 Ogden, Utah 84403 P.O. Box 153048, Ogden, Utah 84415 Ogden (801)394-4515 Salt Lake City (801)521-0222 Fax (801)392-7544</p>	SCALE : 1" = 40'	DATE : 20 July, 2012	DRWG. NO.
	DRAWN : RB	REVISIONS :	2
		96N120 PH 5 S3	