

Legend

(Note: All items may not appear on drawing)

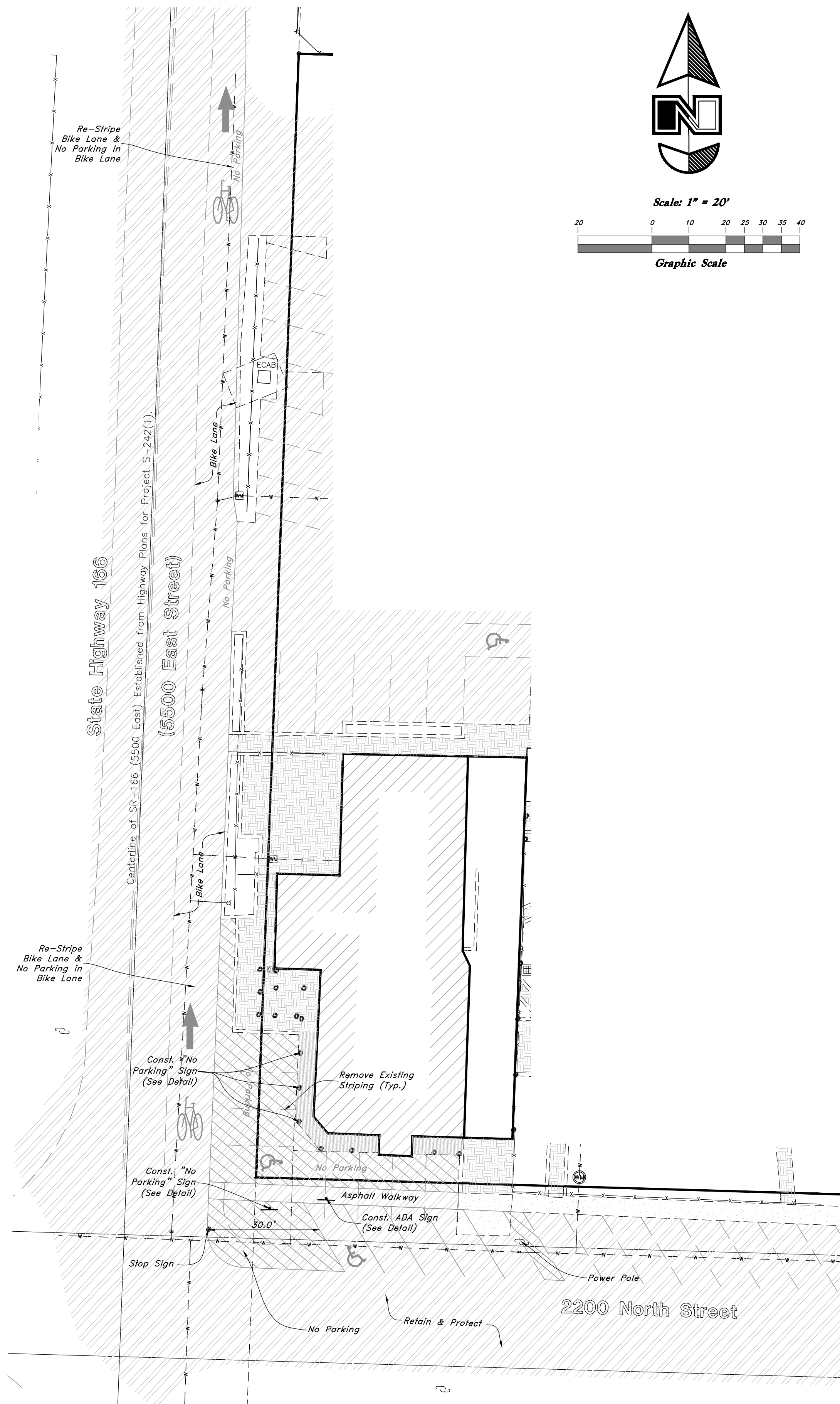
San. Sewer Manhole	⊙
Water Manhole	⊙
Storm Drain Manhole	⊙
Cleanout	⊙
Electrical Manhole	⊙
Catch Basins	⊙
Exist. Fire Hydrant	⊙
Fire Hydrant	⊙
Fire Department Connection	⊙
Post Indicator Valve	⊙
Exist. Water Valve	⊙
Water Valve	⊙
Sanitary Sewer	—S—
Culinary Water	—W—
Gas Line	—G—
Irrigation Line	—I—
Storm Drain	—SD—
Telephone Line	—T—
Secondary Waterline	—SW—
Power Line	—P—
Fire Line	—F—
Land Drain	—LD—
Power pole w/guy	⊙
Light Pole	⊙
Fence	—X—X—
Flowline of ditch	—OHP—
Overhead Power line	—OMP—
Corrugated Metal Pipe	—CMP—
Concrete Pipe	—CP—
Reinforced Concrete Pipe	—RCP—
Ductile Iron	—DI—
Polyvinyl Chloride	—PVC—
Top of Asphalt	—TA—
Edge of Asphalt	—EA—
Centerline	—CL—
Flowline	—FL—
Finish Floor	—FF—
Top of Curb	—TC—
Top of Wall	—TW—
Top of Walk	—TW—
Top of Concrete	—TCN—
Natural Ground	—NG—
Finish Grade	—FG—
Marsh Existing	—ME—
Fire Department Connection	—FDC—
Finish Contour	—90—
Exist. Contour	—95.337A
Finish Grade	—95.721A
Exist. Grade	—R—
Ridge Line	—R—
Direction of Flow	—R—
Existing Asphalt	[Pattern]
New Asphalt	[Pattern]
Heavy Duty Asphalt	[Pattern]
Existing Concrete	[Pattern]
New Concrete	[Pattern]
Demo'd Road Base	[Pattern]
Spill Curb & Gutter	[Pattern]
Demo Tree	[Symbol]
Tree To Remain in Place	[Symbol]

General Site Notes:

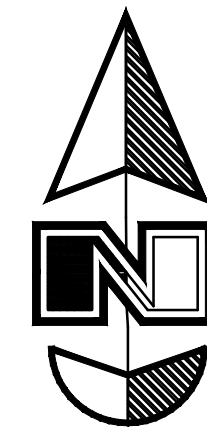
1. Stalls designated as handicap will require a painted handicap symbol and sign.
2. Fire lane markings and signs to be installed as directed by the Fire Marshall.
3. Aisle markings, directional arrows and stop bars will be painted at each driveway as shown on the plans.
4. See Horizontal Control plan for coordinates, radiuses and detailed dimensions of site improvements.
5. Building sidewalks, ramps, and bollards are building contractor responsible items. See architectural plans.
6. All dimensions are to back of curb unless otherwise noted.
7. All exterior exit discharge doors require a 60 inch x 60 inch level exterior landing with a maximum slope of 2%.

PRIVATE ENGINEER'S NOTICE TO CONTRACTORS

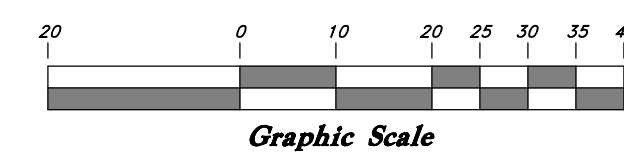
The Contractor agrees that he shall assume sole and complete responsibility for job site conditions during the course of construction of this project, including safety of all persons and property; that this requirement shall apply continuously and not be limited to normal working hours; and that the contractor shall defend, indemnify, and hold the owner and the engineer harmless from any and all liability, real or alleged, in connection with the performance of work on this project, excepting for liability arising from the sole negligence of the owner or the engineer.



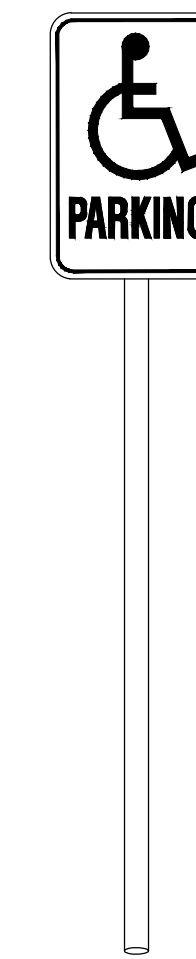
Site Plan
1" = 20'



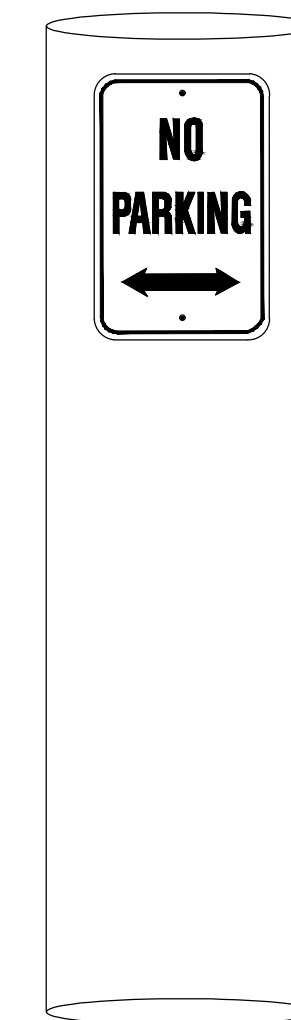
Scale: 1" = 20'



VICINITY MAP (Not to Scale)



ADA Parking Sign Detail
Not to Scale



No Parking Sign Detail
on Existing Post
Not to Scale

Call before you Dig
Avoid cutting underground utility lines. It's costly.



1-800-862-4111

GREAT BASING ENGINEERING
 574 SOUTH 1475 EAST, SUITE 100, EDEN, UTAH 84403
 PHONE: 801-394-4455 FAX: 801-392-7544
 WWW.GREATBASINGENGINEERING.COM

Site Plan
Old Town Eden Condominiums
 2200 North 5500 East Street (Hwy 166)
 Eden City, Weber County, Utah
 A part of Section 35, T7N, R1E, SLB&M, U.S. Survey

31 Jan, 2017

SHEET NO.

1

16N605 - Condo Plat