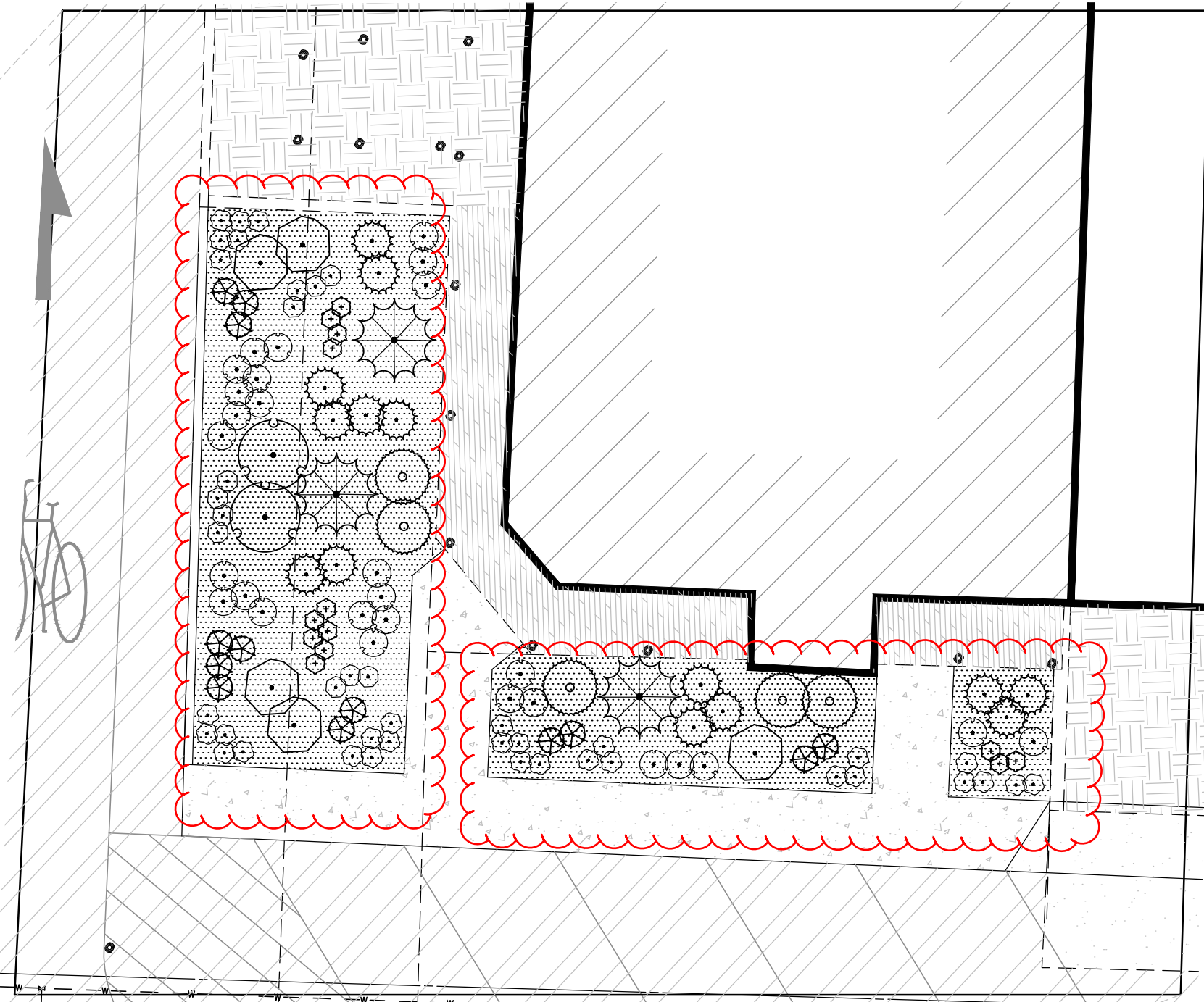
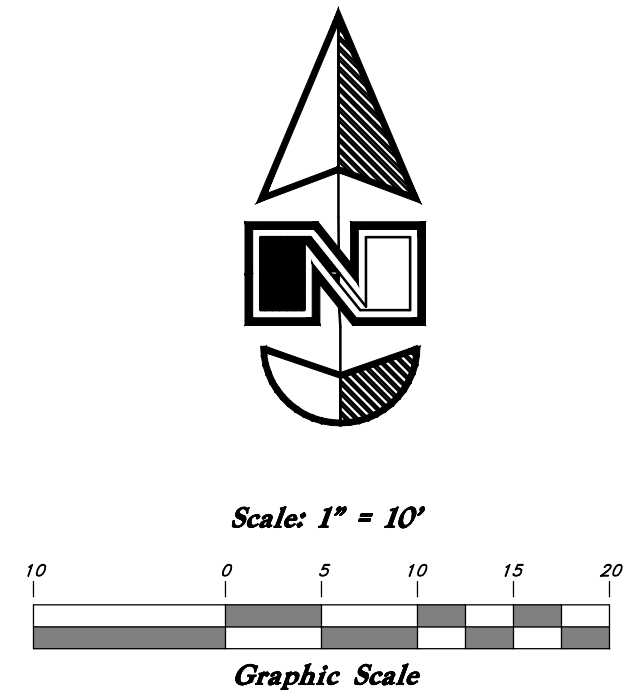
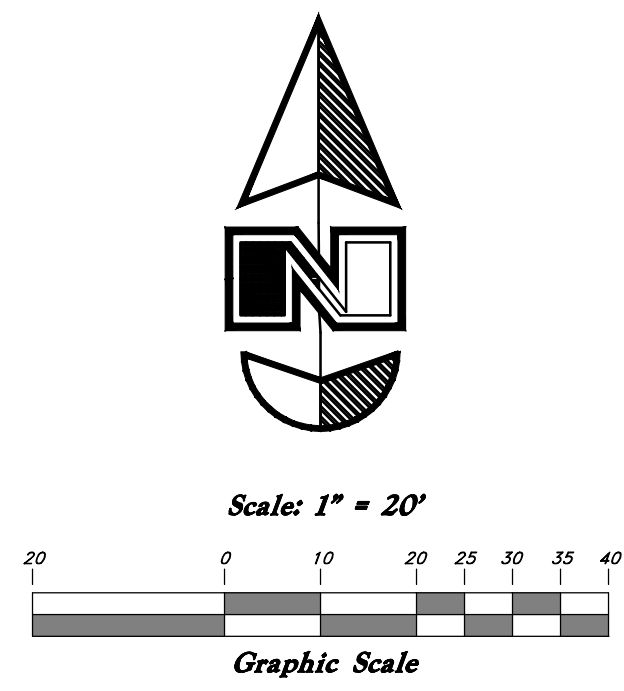
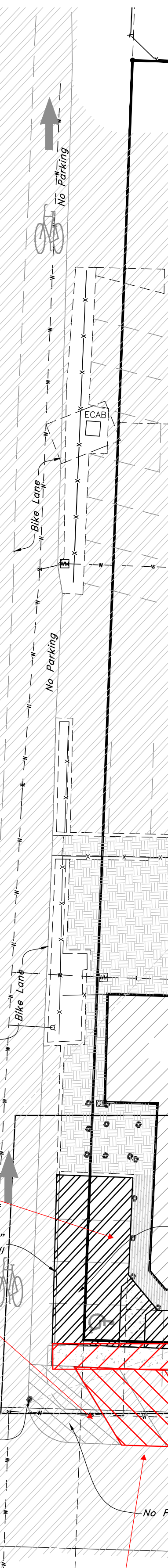


State Highway 166

Centerline of SF-166 (5500 East) Established from Highway Plans for Project S-242(1)

(5500 East Street)



From my understanding, There will not be landscaping here, just 'no parking' signs and painted stripes. Please remove landscaping plan from this design.

The applicant will need to get a cost estimate for the 'no parking' signs and paint for new parking stalls and 'no parking' stripes.

Per Weber County LUC 106-4-3 "The applicant shall guarantee the installation of improvements by depositing the financial guarantee funds into the Weber County Engineer's Escrow which will allow the recording of a subdivision.

From my understanding, this was to be painted as a sidewalk.

Please show where 'No Parking' signs and paint will be located.

The 'no parking' area should be extended to the beginning of the third stall to provide clear view of intersecting streets.

From my understanding, Ben Toone wants to get rid of this driveway and designate it as a parking spot.

PLANT SCHEDULE

SHRUBS	QTY	BOTANICAL NAME / COMMON NAME	SIZE		
	5	<i>Arctostaphylos uva-ursi</i> 'Massachusetts' / Massachusetts Manzanita	5 gal		
	3	<i>Pinus mugo</i> 'Tannenbaum' / Mugo Pine	5 gal		
	2	<i>Rhus aromatica</i> 'Gro-Low' / Gro-Low Fragrant Sumac	5 gal		
	5	<i>Ribes rubrum</i> 'Red Lake' / Red Lake Currant	5 gal		
ANNUALS/PERENNIALS	QTY	BOTANICAL NAME / COMMON NAME	SIZE		
	13	<i>Echinacea purpurea</i> Vintage Wine / Purple Coneflower	1 gal		
	11	<i>Gaillardia aristata</i> 'Arizona Sun' / Arizona Sun Blanket Flower	1 gal		
	32	<i>Hemerocallis</i> x 'Little Business' / Little Business Daylily	1 gal		
	28	<i>Iberis sempervirens</i> 'Autumn Beauty' / Evergreen Candytuft	1 gal		
GRASSES	QTY	BOTANICAL NAME / COMMON NAME	SIZE		
	14	<i>Calamagrostis</i> x <i>acutiflora</i> 'Karl Foerster' / Feather Reed Grass	1 gal		
	13	<i>Pennisetum alopecuroides</i> 'Little Bunny' / Little Bunny Fountain Grass	1 gal		
GROUND COVERS	QTY	BOTANICAL NAME / COMMON NAME	CONT	TYPE	SPACING
	975 sf	Shredded Bark Mulch	Mulch	Shredded	

Site Plan & Landscape Plan  
 Old Town Eden Condominiums  
 2200 North 5500 East Street (Hwy 166)  
 Eden City, Weber County, Utah  
 A part of Section 35, T7N, R1E, SLB&M, U.S. Survey

31 Jan, 2017

SHEET NO.  
 1

16N605 - Condo Plat

REV	DATE	DESCRIPTION

GREAT BASIN ENGINEERING  
 574 SOUTH 1475 EAST, OGDEN, UTAH 84403  
 N.W. 139445, SUC 160152-0223 FAX (801) 392-7544  
 WWW.GREATBASINENGINEERING.COM