

Northwest corner of Section 24, T6N, R1E, SLB&M, U.S. Survey, Found Weber County 3 1/2" Brass Cap Monument, Good Condition, 15" below ground dated 2006

S 89°36'57" E
2660.53' measured
(Basis of Bearing)

(2660.82" W.C.S.)
(S 89°36'46" E W.C.S.)

North 1/4 corner of Section 24, T6N, R1E, SLB&M, U.S. Survey Found Weber County Brass Cap - (1991) Good Condition. (at road surface)

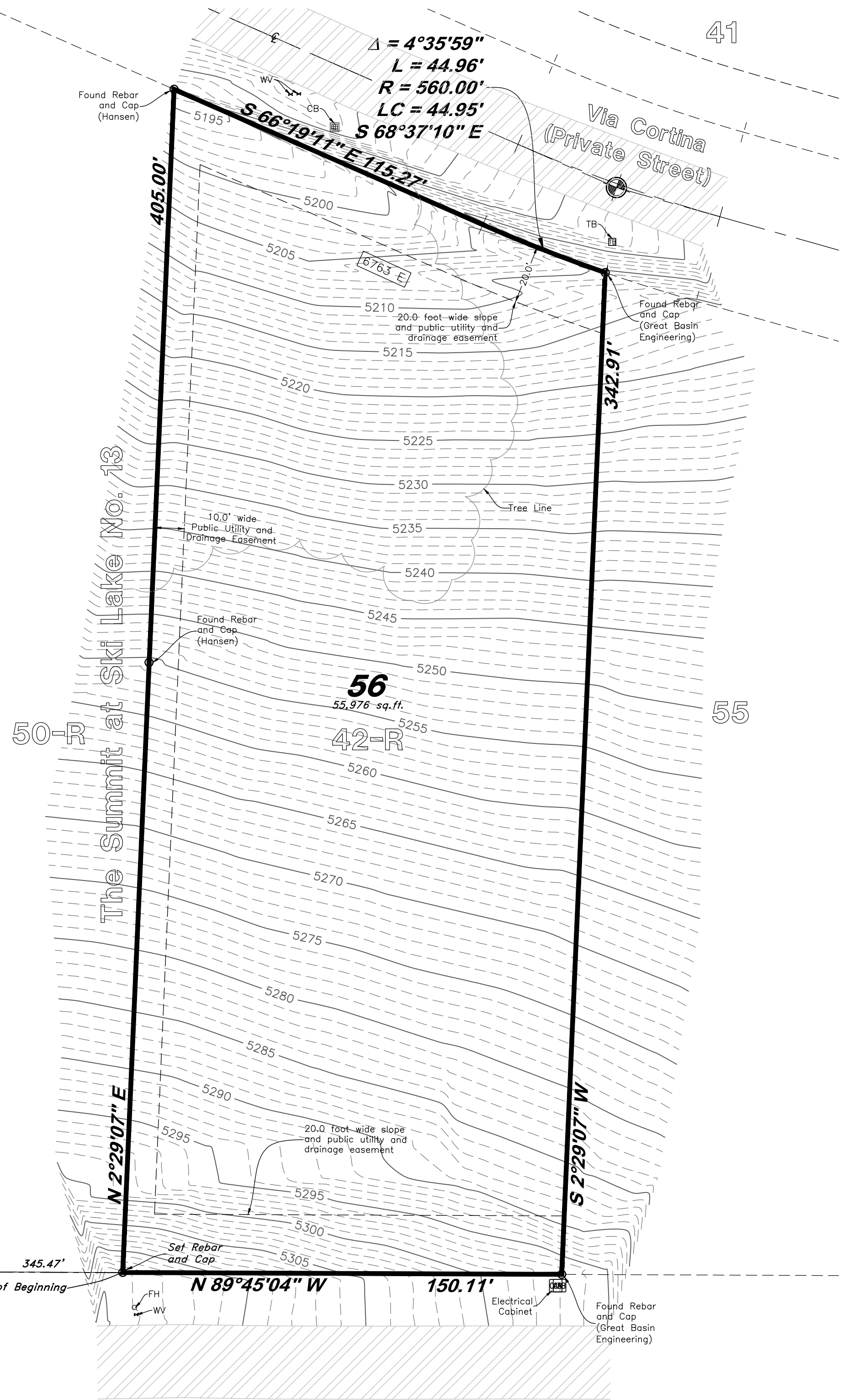
2648.89' measured (2648.06' Grid Dist. W.C.S.)

1/4 Section line

N 0°26'54" E (N 0°27'26" E W.C.S.)
71.21'

N 89°45'09" W

Center of Section 24 T6N, R1E, SLB&M, U.S. Survey Found Weber County Monument Dated 2005 Good Condition

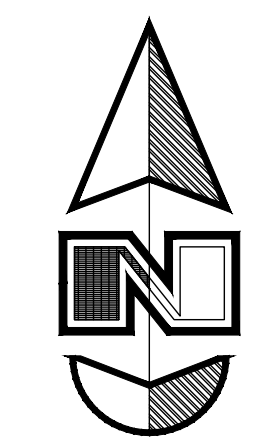


$\Delta = 4^{\circ}35'59''$
 $L = 44.96'$
 $R = 560.00'$
 $LC = 44.95'$
 $S 66^{\circ}19'11'' E 115.27'$
 $S 68^{\circ}37'10'' E$

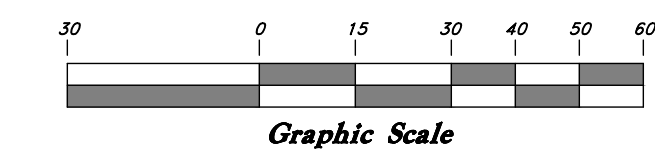
The Summit at Ski Lake No. 13

Clairetina Ct.
(Private Street)

Snowbasin Resort Company



Scale: 1" = 30'



Legend

(Note: All items may not appear on drawing)

San. Sewer Manhole	⊙	Storm Drain Manhole	⊙	DMH	⊙
Water Manhole	⊙	Sewer Manhole	⊙	SMH	⊙
Storm Drain Manhole	⊙	Irrigation Manhole	⊙	IMH	⊙
Gas Manhole	⊙	Top of Wall	—	TWL	—
Electrical Manhole	⊙	Top of Walk	—	TW	—
Telecommunications Manhole	⊙	Top of Concrete	—	TCM	—
Catch Basins	⊙	Natural Ground	—	NG	—
Exist. Fire Hydrant	⊙	Finish Grade	—	FG	—
Fire Hydrant	⊙	Fire Department Connection	—	FDC	—
Exist. Water Valve	⊙	Finish Contour	—	90	—
Water Valve	⊙	Exist. Contour	—	95.32TA	—
Sanitary Sewer	—	Finish Grade	—	95.72TA	—
Culinary Water	—	Exist. Grade	—	R	—
Gas Line	—	Ridge Line	—		—
Irrigation Line	—	Direction of Flow	—		—
Storm Drain	—	Existing Asphalt	—		—
Telephone Line	—	Concrete	—		—
Secondary Waterline	—	Concrete	—		—
Power Line	—	Spill	—		—
Fire Line	—	Curb & Gutter	—		—
Land Drain	—	Gas Meter	—		—
Utility Pole	—	Telephone Box	—		—
Utility Pole w/guy	—	Power Line	—		—
Light Pole	—	Fiber Optic Line	—		—
Fence	—	Power Pole	—		—
Flowline of ditch	—	Overhead Power line	—		—
Corrugated Metal Pipe	—	Centerline	—		—
Concrete Pipe	—	Existing Building	—		—
Reinforced Concrete Pipe	—	Set Nail & Washer	—		—
Ductile Iron	—	Set Rebar & Cap	—		—
Polyvinyl Chloride	—	w/ Fencepost	—		—
Top of Asphalt	—	Set Hub & Tack	—		—
Centerline	—	Found Monument	—		—
Flowline	—	Found Section Corner	—		—
Finish Floor	—	Radial Line	—		(Rad.)
Top of Curb	—	Non-Radial Line	—		(N/R)
Electrical Box	—	Public Utility Easement	—		P.U.E.
Catch Basin	—	Ogden City Surveyor	—		O.C.S.
Sewer Manhole	—	Weber County Surveyor	—		W.C.S.
Roof Drain	—				
Fire Hydrant	—				
Water Valve	—				
Storm Drain	—				
Water Manhole	—				

BOUNDARY DESCRIPTION

A part of the Northeast Quarter of 24, Township 6 North, Range 1 East, Salt Lake Base and Meridian, U.S. Survey, Huntsville, Weber County, Utah.

All of Lot 42-R, The Summit at Ski Lake No. 11, Weber County Utah.

Contains: 1.285 acres.

GREAT BASIN ENGINEERING
 5746 SOUTH 1475 EAST OGDEN, UTAH 84403
 MAIN 8019444515 • FAX 801521-0222 • EX 8011392-7544
 WWW.GREATBASINENGINEERING.COM

Lot Plan
Wagstaff - Lot 42-R (56-R)
 6763 East Via Cortina Street
 Huntsville, Weber County, Utah
 A part of Section 24, T6N, R1E, SLB&M, U.S. Survey

06 July, 2016

SHEET NO.

1

16N816