

Exhibits

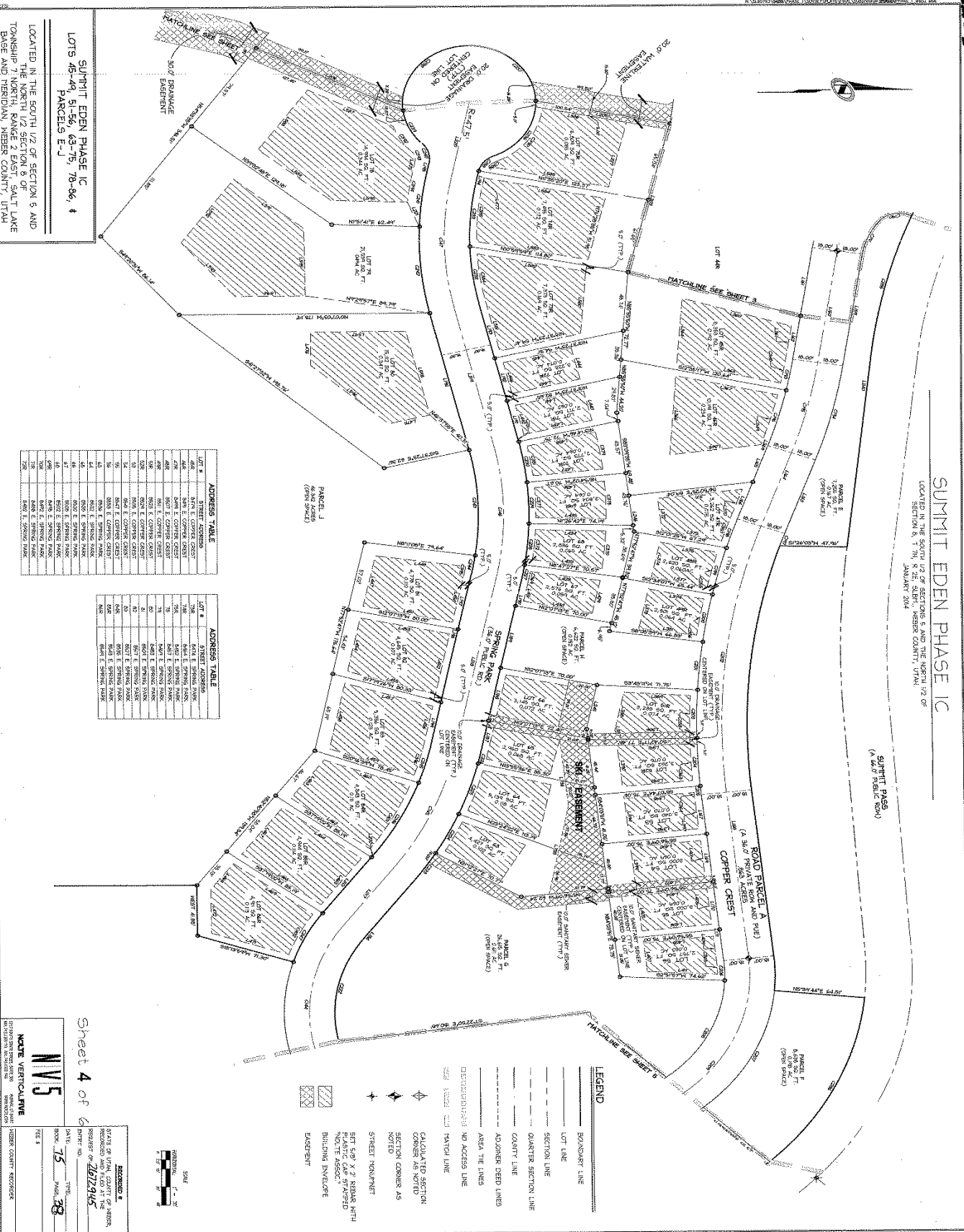
- A. Summit Eden Phase 1C-Original plat
- B. Summit Eden Phase 1C Amendment 3
- C. Approved Conceptual Plans

Map 1



Exhibit A-Summit Eden Phase 1C-Original Plat

BL55L



LOCATED IN THE SOUTH 1/2 OF SECTION 5 AND TOWNSHIP 7 NORTH, RANGE 2 EAST, SALT LAKE BASE AND MERIDIAN, WEBER COUNTY, UTAH

LOT 1 SUMMIT EDEN PHASE 1C PARCELS E-J

LOCATED IN THE SOUTH 1/2 OF SECTION 5 AND TOWNSHIP 7 NORTH, RANGE 2 EAST, SALT LAKE BASE AND MERIDIAN, WEBER COUNTY, UTAH

LOT #	STREET ADDRESS
1	3400 E. SPRING PARK
2	3400 E. SPRING PARK
3	3400 E. SPRING PARK
4	3400 E. SPRING PARK
5	3400 E. SPRING PARK
6	3400 E. SPRING PARK
7	3400 E. SPRING PARK
8	3400 E. SPRING PARK
9	3400 E. SPRING PARK
10	3400 E. SPRING PARK
11	3400 E. SPRING PARK
12	3400 E. SPRING PARK
13	3400 E. SPRING PARK
14	3400 E. SPRING PARK
15	3400 E. SPRING PARK
16	3400 E. SPRING PARK
17	3400 E. SPRING PARK
18	3400 E. SPRING PARK
19	3400 E. SPRING PARK
20	3400 E. SPRING PARK
21	3400 E. SPRING PARK
22	3400 E. SPRING PARK
23	3400 E. SPRING PARK
24	3400 E. SPRING PARK
25	3400 E. SPRING PARK
26	3400 E. SPRING PARK
27	3400 E. SPRING PARK
28	3400 E. SPRING PARK
29	3400 E. SPRING PARK
30	3400 E. SPRING PARK
31	3400 E. SPRING PARK
32	3400 E. SPRING PARK
33	3400 E. SPRING PARK
34	3400 E. SPRING PARK
35	3400 E. SPRING PARK
36	3400 E. SPRING PARK
37	3400 E. SPRING PARK
38	3400 E. SPRING PARK
39	3400 E. SPRING PARK
40	3400 E. SPRING PARK
41	3400 E. SPRING PARK
42	3400 E. SPRING PARK
43	3400 E. SPRING PARK
44	3400 E. SPRING PARK
45	3400 E. SPRING PARK
46	3400 E. SPRING PARK
47	3400 E. SPRING PARK
48	3400 E. SPRING PARK
49	3400 E. SPRING PARK
50	3400 E. SPRING PARK
51	3400 E. SPRING PARK
52	3400 E. SPRING PARK
53	3400 E. SPRING PARK
54	3400 E. SPRING PARK
55	3400 E. SPRING PARK
56	3400 E. SPRING PARK
57	3400 E. SPRING PARK
58	3400 E. SPRING PARK
59	3400 E. SPRING PARK
60	3400 E. SPRING PARK
61	3400 E. SPRING PARK
62	3400 E. SPRING PARK
63	3400 E. SPRING PARK
64	3400 E. SPRING PARK
65	3400 E. SPRING PARK
66	3400 E. SPRING PARK
67	3400 E. SPRING PARK
68	3400 E. SPRING PARK
69	3400 E. SPRING PARK
70	3400 E. SPRING PARK
71	3400 E. SPRING PARK
72	3400 E. SPRING PARK
73	3400 E. SPRING PARK
74	3400 E. SPRING PARK
75	3400 E. SPRING PARK
76	3400 E. SPRING PARK
77	3400 E. SPRING PARK
78	3400 E. SPRING PARK
79	3400 E. SPRING PARK
80	3400 E. SPRING PARK
81	3400 E. SPRING PARK
82	3400 E. SPRING PARK
83	3400 E. SPRING PARK
84	3400 E. SPRING PARK
85	3400 E. SPRING PARK
86	3400 E. SPRING PARK
87	3400 E. SPRING PARK
88	3400 E. SPRING PARK
89	3400 E. SPRING PARK
90	3400 E. SPRING PARK
91	3400 E. SPRING PARK
92	3400 E. SPRING PARK
93	3400 E. SPRING PARK
94	3400 E. SPRING PARK
95	3400 E. SPRING PARK
96	3400 E. SPRING PARK
97	3400 E. SPRING PARK
98	3400 E. SPRING PARK
99	3400 E. SPRING PARK
100	3400 E. SPRING PARK

LOT #	STREET ADDRESS
101	3400 E. SPRING PARK
102	3400 E. SPRING PARK
103	3400 E. SPRING PARK
104	3400 E. SPRING PARK
105	3400 E. SPRING PARK
106	3400 E. SPRING PARK
107	3400 E. SPRING PARK
108	3400 E. SPRING PARK
109	3400 E. SPRING PARK
110	3400 E. SPRING PARK
111	3400 E. SPRING PARK
112	3400 E. SPRING PARK
113	3400 E. SPRING PARK
114	3400 E. SPRING PARK
115	3400 E. SPRING PARK
116	3400 E. SPRING PARK
117	3400 E. SPRING PARK
118	3400 E. SPRING PARK
119	3400 E. SPRING PARK
120	3400 E. SPRING PARK
121	3400 E. SPRING PARK
122	3400 E. SPRING PARK
123	3400 E. SPRING PARK
124	3400 E. SPRING PARK
125	3400 E. SPRING PARK
126	3400 E. SPRING PARK
127	3400 E. SPRING PARK
128	3400 E. SPRING PARK
129	3400 E. SPRING PARK
130	3400 E. SPRING PARK
131	3400 E. SPRING PARK
132	3400 E. SPRING PARK
133	3400 E. SPRING PARK
134	3400 E. SPRING PARK
135	3400 E. SPRING PARK
136	3400 E. SPRING PARK
137	3400 E. SPRING PARK
138	3400 E. SPRING PARK
139	3400 E. SPRING PARK
140	3400 E. SPRING PARK
141	3400 E. SPRING PARK
142	3400 E. SPRING PARK
143	3400 E. SPRING PARK
144	3400 E. SPRING PARK
145	3400 E. SPRING PARK
146	3400 E. SPRING PARK
147	3400 E. SPRING PARK
148	3400 E. SPRING PARK
149	3400 E. SPRING PARK
150	3400 E. SPRING PARK

Sheet 4 of 6

SCALE VERTICAL

DATE: 7/5/2010

TIME: 3:38

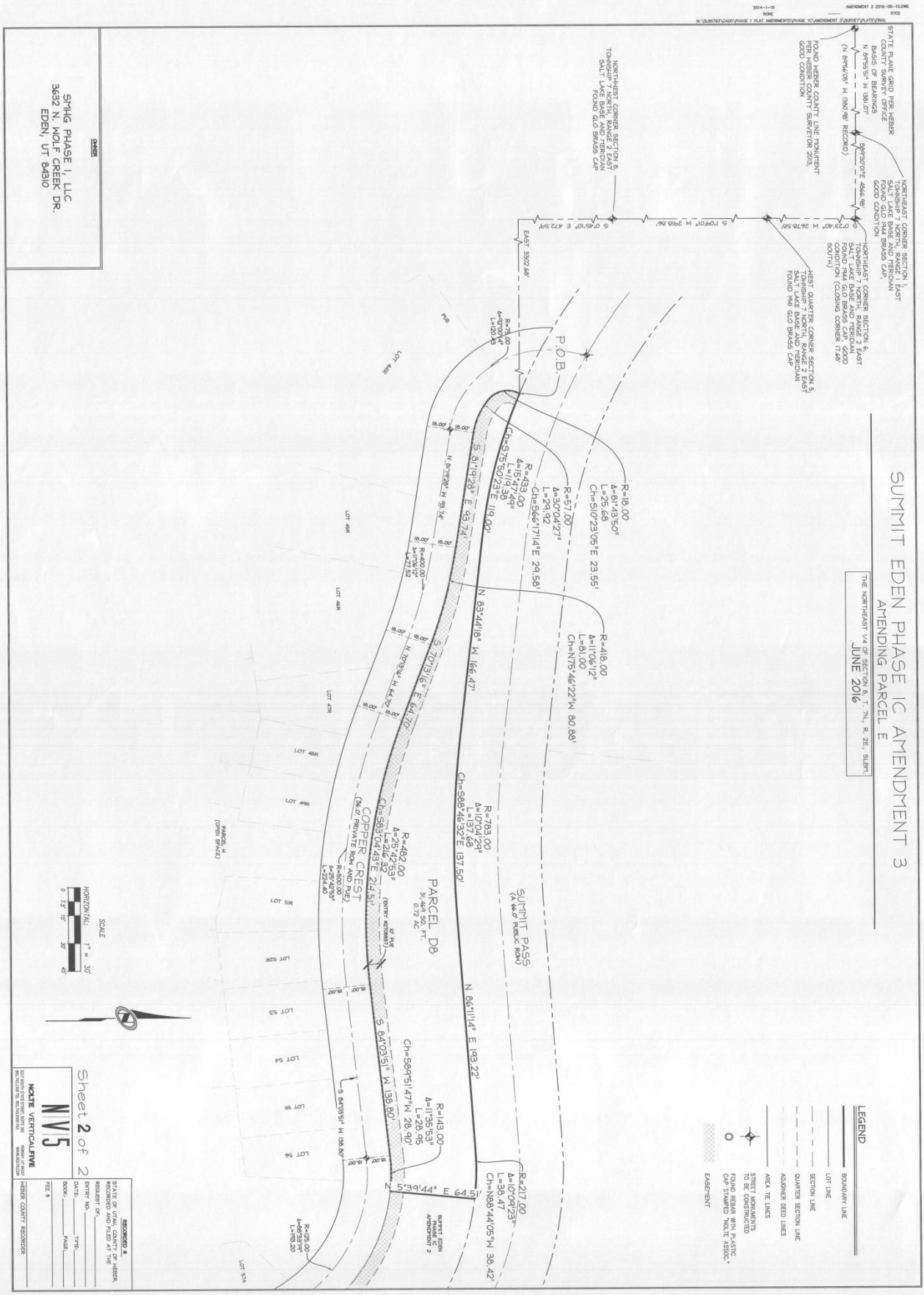
REGISTERED AND FILED AT THE

OFFICE OF THE COUNTY CLERK

WEBER COUNTY, UTAH

75-38

Exhibit B-Summit Eden Phase 1C Amendment 3



SUMMIT EDEN PHASE 1C AMENDMENT 3
AMENDING PARCEL E
JUNE 2016

SMHG PHASE I, LLC
3632 N. WOLF CREEK DR.
EDEN, UT 84310

Sheet 2 of 2
NVS
SCALE VERTICALIVE

RECORDED IN _____
STATE OF UTAH, COUNTY OF HERRN,
RECORDED AND FILED AT THE
DATE _____ TIME _____
BOOK _____ PAGE _____

FILE # _____
HERRN COUNTY RECORDER

Earl's Village Illustrative Plan



Earl's Village is the high mountain ski destination within the resort with hotels, townhomes and condominiums located around the south side of Earl's Peak. The Village provides for excellent access to the existing Powder Mountain Ski terrain while providing development parcels with commanding views from the top of the Mountain. Ski access out of the Village leads to Letty's, Mary's Bowl and to the Summit Village. Earl's also contains a limited number of ski-in/ski-out estate single family lots at the top of Mary's bowl.

Earl's Village also provides a secondary access stub for the project providing public access to the adjacent properties north and east of the Powder Mountain project area. This access is provided via Summit Pass Road with a roadway stubbed to the adjacent parcel and existing dirt road where the most feasible future roadway connection to the east exists. A separate roadway study has been provided to Weber County engineering to illustrate this connection feasibility.



KEY MAP