

# DIAMOND H SUBDIVISION 1st AMENDMENT

PART OF THE NORTHEAST QUARTER OF SECTION 22, T.7N., R.2W., SLB&M, U.S. SURVEY  
WEBER COUNTY, UTAH  
SEPTEMBER, 2016

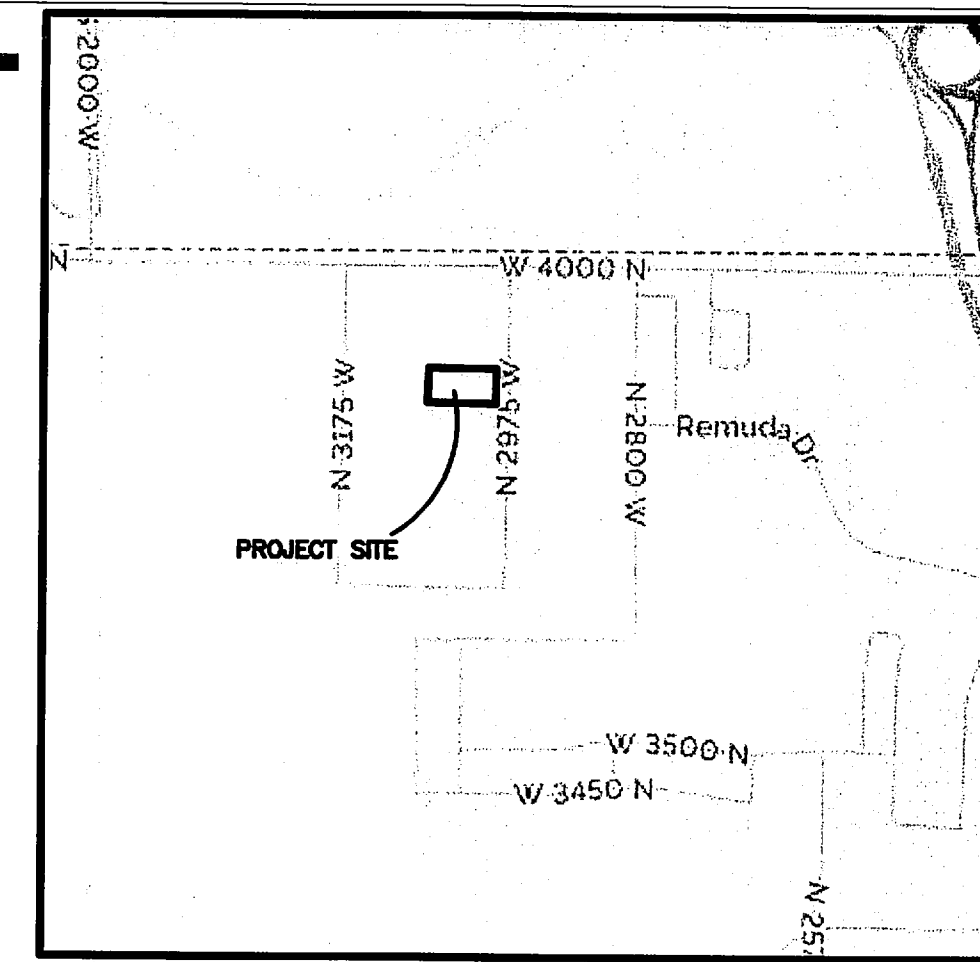
## BOUNDARY DESCRIPTION

ALL OF LOT 1, OF DIAMOND H SUBDIVISION, IN THE OFFICE OF THE WEBER COUNTY RECORDER. MORE PARTICULARLY DESCRIBED AS FOLLOWS:

PART OF THE NORTHEAST QUARTER OF SECTION 22, TOWNSHIP 7 NORTH, RANGE 2 WEST, SALT LAKE BASE AND MERIDIAN, U.S. SURVEY, DESCRIBED AS FOLLOWS:

BEGINNING AT A POINT ON THE CENTERLINE OF A DITCH, SAID POINT BEING S89°40'08"E ALONG THE SECTION LINE 184.08 FEET AND S00°19'52"W 840.25 FEET FROM THE NORTH QUARTER CORNER OF SAID SECTION 22; THENCE N01°46'35"E ALONG SAID CENTERLINE 335.03 FEET; THENCE S89°02'28"E 648.44 FEET; THENCE S00°57'32"W 335.00 FEET TO THE NORTH BOUNDARY OF LAZE DAZE SUBDIVISION; THENCE N89°02'28"W ALONG SAID NORTH BOUNDARY 653.22 FEET TO THE POINT OF BEGINNING.

CONTAINING 218,027 SQUARE FEET OR 5.005 ACRES, MORE OR LESS



VICINITY MAP  
(NO SCALE)

### SURVEYOR'S CERTIFICATE

I, **TREVOR J. HATCH**, DO HEREBY CERTIFY THAT I AM A REGISTERED PROFESSIONAL LAND SURVEYOR IN THE STATE OF UTAH IN ACCORDANCE WITH TITLE 58, CHAPTER 22, PROFESSIONAL ENGINEERS AND LAND SURVEYORS ACT; AND THAT I HAVE COMPLETED A SURVEY OF THE PROPERTY DESCRIBED ON THIS PLAT IN ACCORDANCE WITH SECTION 17-23-17 AND HAVE VERIFIED ALL MEASUREMENTS, AND HAVE PLACED MONUMENTS AS REPRESENTED ON THIS PLAT, AND THAT THIS PLAT OF **DIAMOND H SUBDIVISION 1ST AMENDMENT** IN WEBER COUNTY, UTAH, HAS BEEN DRAWN CORRECTLY TO THE DESIGNATED SCALE AND IS A TRUE AND CORRECT REPRESENTATION OF THE HEREIN DESCRIBED LANDS INCLUDED IN SAID SUBDIVISION, BASED UPON DATA COMPILED FROM RECORDS IN THE WEBER COUNTY RECORDER'S OFFICE AND FROM SAID SURVEY MADE BY ME ON THE GROUND. I FURTHER CERTIFY THAT THE REQUIREMENTS OF ALL APPLICABLE STATUTES AND ORDINANCES OF WEBER COUNTY CONCERNING ZONING REQUIREMENTS REGARDING LOT MEASUREMENTS HAVE BEEN COMPLIED WITH.

SIGNED THIS 14th DAY OF October, 2016.

9031945  
UTAH LICENSE NUMBER

TREVOR J. HATCH

### OWNERS DEDICATION AND CERTIFICATION

WE THE UNDERSIGNED OWNERS OF THE HEREIN DESCRIBED TRACT OF LAND, DO HEREBY SET APART AND SUBDIVIDE THE SAME INTO LOTS AND STREETS AS SHOWN ON THE PLAT AND NAME SAID TRACT **DIAMOND H SUBDIVISION 1ST AMENDMENT**, AND DO HEREBY DEDICATE AND RESERVE UNTO THEMSELVES, THEIR HEIRS, THEIR GRANTEES AND ASSIGNS, A RIGHT OF WAY TO BE USED IN COMMON WITH ALL OTHERS WITHIN SAID SUBDIVISION (AND THOSE ADJOINING SUBDIVISIONS THAT MAY BE SUBDIVIDED BY THE UNDERSIGNED OWNERS, THEIR SUCCESSORS, OR ASSIGNS) ON OVER AND ACROSS ALL THOSE PORTIONS OR PARTS OF SAID TRACT OF LAND DESIGNATED ON THIS PLAT AS PRIVATE STREETS (PRIVATE RIGHTS OF WAY) AS ACCESS TO THE INDIVIDUAL LOTS, TO BE MAINTAINED BY THE LOT OWNERS AND ALSO TO GRANT AND DEDICATE A PERPETUAL RIGHT AND EASEMENT OVER, UPON AND UNDER THE LANDS DESIGNATED HEREON AS PUBLIC UTILITY, AND DRAINAGE EASEMENTS, THE SAME TO BE USED FOR THE INSTALLATION MAINTENANCE AND OPERATION OF PUBLIC UTILITY SERVICE LINE, STORM DRAINAGE FACILITIES, WHICHEVER IS APPLICABLE AS MAY BE AUTHORIZED BY THE GOVERNING AUTHORITY, WITH NO BUILDINGS OR STRUCTURES BEING ERECTED WITHIN SUCH EASEMENTS.

SIGNED THIS 18 DAY OF Oct, 2016.

Tom Hadley Vivian Hadley  
TOM HADLEY VIVIAN HADLEY

### ACKNOWLEDGMENT

STATE OF UTAH )  
COUNTY OF Webster ) ss.

ON THE 18th DAY OF Oct, 2016, PERSONALLY APPEARED BEFORE ME, THE UNDERSIGNED NOTARY PUBLIC, Tom Hadley (AND Vivian Hadley) SIGNER(S) OF THE ABOVE OWNER'S DEDICATION AND CERTIFICATION, WHO BEING BY ME DULY SWORN, DID ACKNOWLEDGE TO ME Angela Hill SIGNED IT FREELY, VOLUNTARILY, AND FOR THE PURPOSES THEREIN MENTIONED.

11-14-2018 COMMISSION EXPIRES

Angela Hill NOTARY PUBLIC

### ACKNOWLEDGMENT

STATE OF UTAH )  
COUNTY OF \_\_\_\_\_ ) ss.

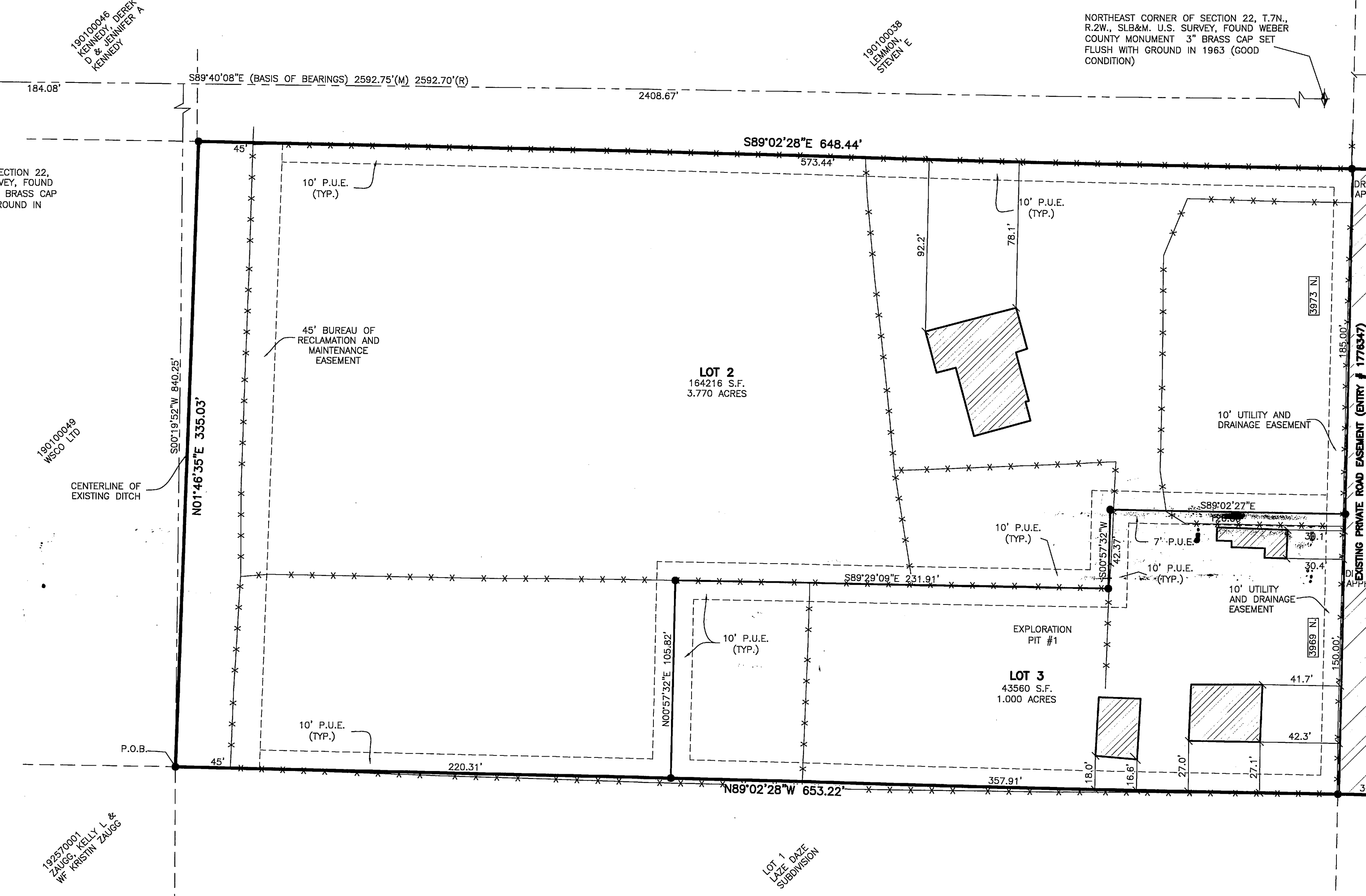
ON THE \_\_\_\_\_ DAY OF \_\_\_\_\_, 20\_\_\_\_, PERSONALLY APPEARED BEFORE ME, THE UNDERSIGNED NOTARY PUBLIC, \_\_\_\_\_ (AND \_\_\_\_\_) BEING BY ME DULY SWORN, ACKNOWLEDGED TO ME THEY ARE \_\_\_\_\_ AND \_\_\_\_\_ OF SAID CORPORATION AND THAT THEY SIGNED THE ABOVE OWNER'S DEDICATION AND CERTIFICATION FREELY, VOLUNTARILY, AND IN BEHALF OF SAID CORPORATION FOR THE PURPOSES THEREIN MENTIONED.

COMMISSION EXPIRES \_\_\_\_\_ NOTARY PUBLIC \_\_\_\_\_

### Project Info.

Surveyor: T. HATCH  
Designer: D. CAVE  
Begin Date: 9-19-2016  
Name: DIAMOND H SUBDIVISION  
Number: 6725-01  
Revision: \_\_\_\_\_  
Scale: 1"=40'  
Checked: \_\_\_\_\_

5180 SOUTH 1500 WEST, RIVERDALE, UTAH, 84405  
TEL: (801) 621-3100 FAX: (801) 621-2886 www.reeve-associates.com



### LEGEND

- SECTION CORNER
- SET 5/8" REBAR AND PLASTIC CAP STAMPED "REEVE & ASSOCIATES"
- BOUNDARY LINE
- LOT LINE
- ADJOINING PROPERTY
- EASEMENTS
- CENTERLINE
- SECTION TIE LINE
- EXISTING BUILDING
- PRIVATE ROADWAY
- P.U.E. = PUBLIC UTILITY EASEMENT

Scale: 1" = 40'

### EXPLORATION PIT #1

EXPLORATION PIT #1 (UTM, ZONE 12T, NAD 83, 411976N, 4576373E)  
0-5" IMPORTED ROAD BASE  
5-21" SILT LOAM, GRANULAR STRUCTURE  
21-38" SILT LOAM, MASSIVE STRUCTURE, MOTTLING 30%  
38-48" SANDY LOAM TEXTURE, MASSIVE STRUCTURE, GRAVEL 5%, MOTTLING 11% EXCESSIVE

### AGRICULTURAL NOTE

AGRICULTURE IS THE PREFERRED USE IN THE AGRICULTURE ZONES. AGRICULTURAL OPERATIONS AS SPECIFIED IN THE LAND USE CODE FOR A PARTICULAR ZONE ARE PERMITTED AT AN TIME INCLUDING THE OPERATION OF FARM MACHINERY AND NO ALLOWED AGRICULTURAL USE SHALL BE SUBJECT TO RESTRICTIONS ON THE BASIS THAT IT INTERFERES WITH ACTIVITIES OF FUTURE RESIDENTS OF THIS SUBDIVISION.

### NARRATIVE

THE PURPOSE OF THIS PLAT IS TO DIVIDE THIS PROPERTY INTO LOTS AND STREETS. ALL LOT CORNERS WERE SET WITH A 5/8" REBAR AND PLASTIC CAP STAMPED "REEVE & ASSOCIATES". THE BOUNDARY WAS DETERMINED BY RETRACING THE ORIGINAL SUBDIVISION PLAT.

### BASIS OF BEARINGS

THE BASIS OF BEARINGS FOR THIS PLAT IS THE SECTION LINE BETWEEN THE NORTH QUARTER CORNER AND THE NORTHEAST CORNER OF SECTION 22, TOWNSHIP 7 NORTH, RANGE 2 WEST, SALT LAKE BASE AND MERIDIAN, U.S. SURVEY, SHOWN HEREON AS S89°40'08"E, UTAH STATE PLANE NORTH GRID AS PER WEBER COUNTY SURVEY

### DEVELOPER INFO.

TOM HADLEY  
3973 N 2975 W  
OGDEN, UTAH  
84404

WEBER-MORGAN HEALTH DEPARTMENT  
I HEREBY CERTIFY THAT THE SOILS PERCOLATION RATES AND SITE CONDITIONS FOR THIS SUBDIVISION HAVE BEEN INVESTIGATED BY THIS OFFICE AND ARE APPROVED FOR ON-SITE WASTE WATER DISPOSAL SYSTEMS.  
SIGNED THIS 25th DAY OF October, 2016.

### WEBER COUNTY PLANNING COMMISSION APPROVAL

THIS IS TO CERTIFY THAT THIS SUBDIVISION PLAT WAS DULY APPROVED BY THE WEBER COUNTY PLANNING COMMISSION.  
SIGNED THIS 27 DAY OF October, 2016.

### WEBER COUNTY ENGINEER

I HEREBY CERTIFY THAT THE REQUIRED PUBLIC IMPROVEMENT STANDARDS AND DRAWINGS FOR THIS SUBDIVISION CONFORM WITH THE COUNTY STANDARDS AND THE AMOUNT OF THE FINANCIAL GUARANTEE IS SUFFICIENT FOR THE INSTALLATION OF THESE IMPROVEMENTS.

### WEBER COUNTY COMMISSION ACCEPTANCE

THIS IS TO CERTIFY THAT THIS SUBDIVISION PLAT, THE DEDICATION OF STREETS AND OTHER PUBLIC WAYS AND FINANCIAL GUARANTEE OF PUBLIC IMPROVEMENTS ASSOCIATED WITH THIS SUBDIVISION, THEREON ARE HEREBY APPROVED AND ACCEPTED BY THE COMMISSIONERS OF WEBER COUNTY, UTAH.  
SIGNED THIS \_\_\_\_\_ DAY OF \_\_\_\_\_, 20\_\_\_\_.

### WEBER COUNTY SURVEYOR

I HEREBY CERTIFY THAT THE WEBER COUNTY SURVEYOR'S OFFICE HAS REVIEWED THIS PLAT FOR MATHEMATICAL CORRECTNESS, SECTION CORNER DATA, AND FOR HARMONY WITH LINES AND MONUMENTS ON RECORD IN COUNTY OFFICES. THE APPROVAL OF THIS PLAT BY THE WEBER COUNTY SURVEYOR DOES NOT RELIEVE THE LICENSED LAND SURVEYOR WHO EXECUTED THIS PLAT FROM THE RESPONSIBILITIES AND/OR LIABILITIES ASSOCIATED THEREWITH.  
SIGNED THIS 18th DAY OF October, 2016.

### WEBER COUNTY ATTORNEY

I HAVE EXAMINED THE FINANCIAL GUARANTEE AND OTHER DOCUMENTS ASSOCIATED WITH THIS SUBDIVISION PLAT, AND IN MY OPINION THEY CONFORM WITH THE COUNTY ORDINANCE APPLICABLE THERETO AND NOW IN FORCE AND AFFECT.  
SIGNED THIS \_\_\_\_\_ DAY OF \_\_\_\_\_, 20\_\_\_\_.

### Webber County Recorder

Entry No. 2825327. Fee Paid \$32.25. Filed for Record And Recorded: 27 OCT 2016 At 2:21 PM in Book 80 Of the Official Records, Page 04  
Recorded For: DIAMOND H SUB 1st AMD  
LEANN H. KILTS  
Webber County Recorder  
B. K. Deputy.